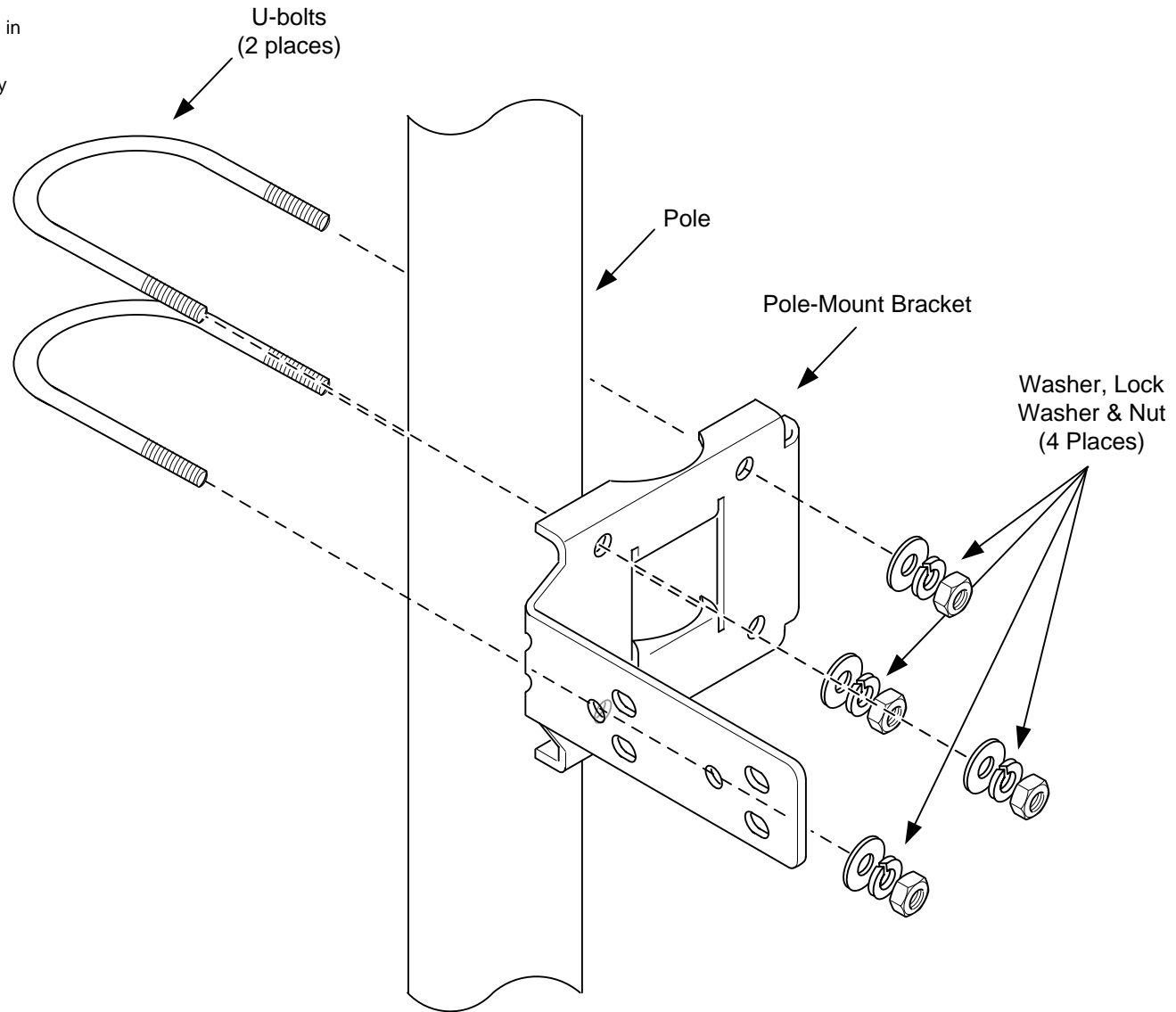


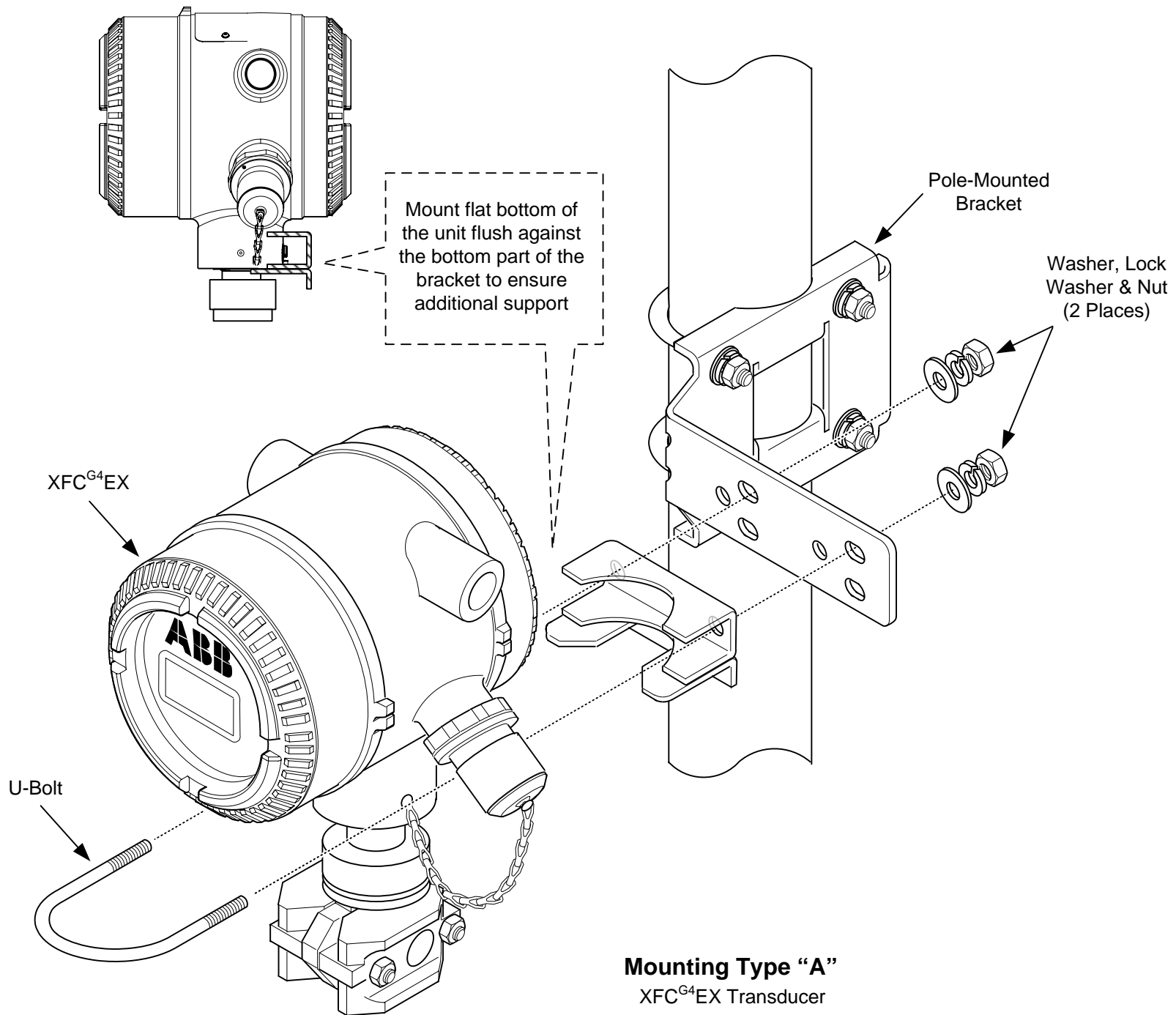
NOTES:

1. WARNING: This drawing does not illustrate the installation methods required for hazardous locations. Prior to any installation in a Classified Hazardous Location, verify installation methods by the Control Drawing referenced on the product's name tag and by national and local codes.



**Assembling the Pole-mount Bracket**

<b>ABB</b> TOTALFLOW Products	ACTION	DOC TYPE	TITLE	DWG NO.	REV	SHEET
	L30568	UD	XFC <sup>G4</sup> EX POLE-MOUNT BRACKET	2104424	AA	1 OF 4



TOTALFLOW  
Products

ACTION  
L30568

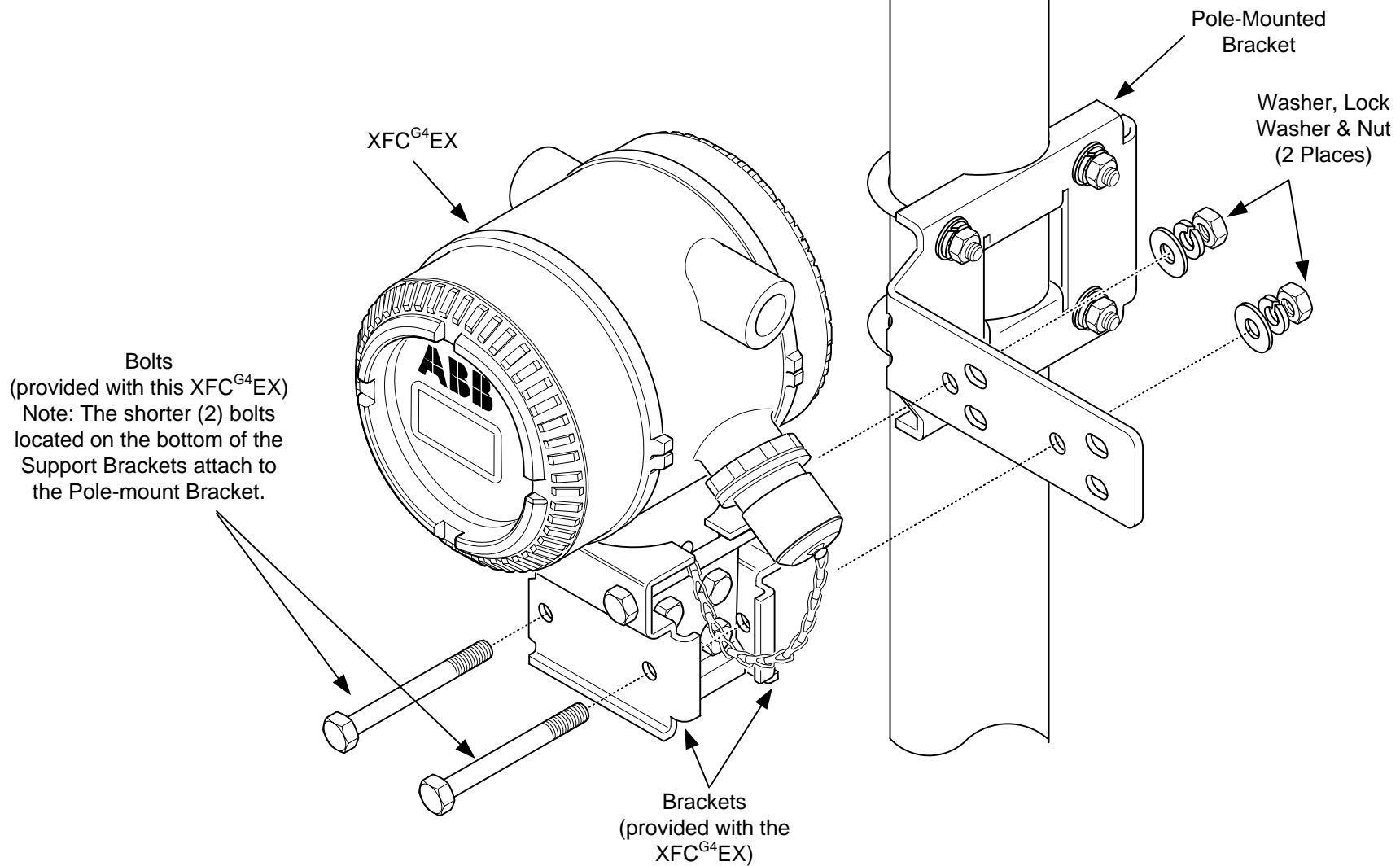
DOC TYPE  
UD

TITLE  
XFC<sup>G4</sup>EX POLE-MOUNT BRACKET

DWG NO.  
2104424

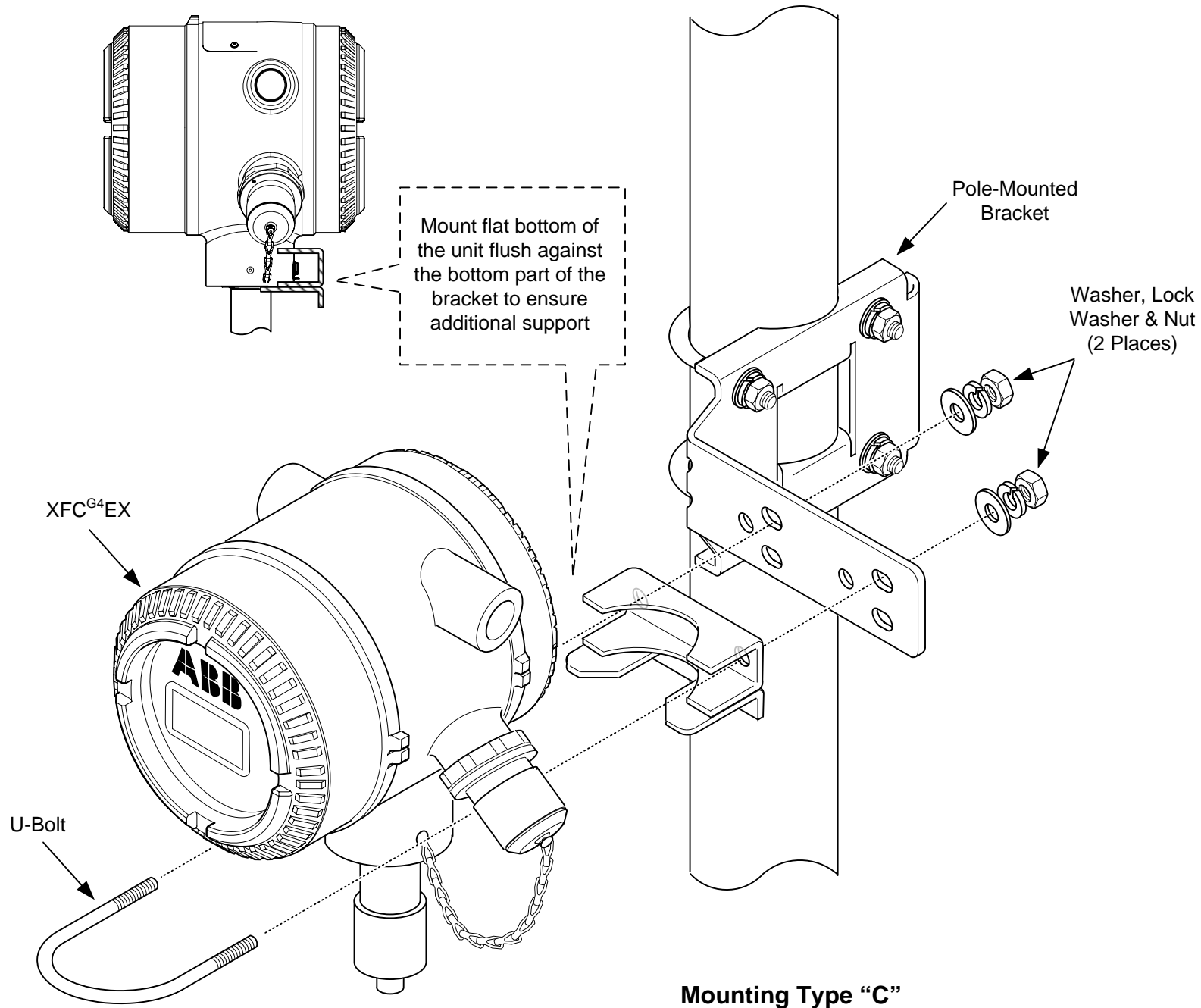
REV  
AA

SHEET  
2 OF 4



**Mounting Type "B"**  
 XFC<sup>G4</sup>EX Transducer

<b>ABB</b>	TOTALFLOW	ACTION	DOC TYPE	TITLE	DWG NO.	REV	SHEET
	Products	L30568	UD	XFC <sup>G4</sup> EX POLE-MOUNT BRACKET	2104424	AA	3 OF 4



**Mounting Type "C"**  
XFC<sup>G4</sup>EX AP Transducer

<b>ABB</b>	TOTALFLOW	ACTION	DOC TYPE	TITLE	DWG NO.	REV	SHEET
	Products	L30568	UD	XFC <sup>G4</sup> EX POLE-MOUNT BRACKET	2104424	AA	4 OF 4