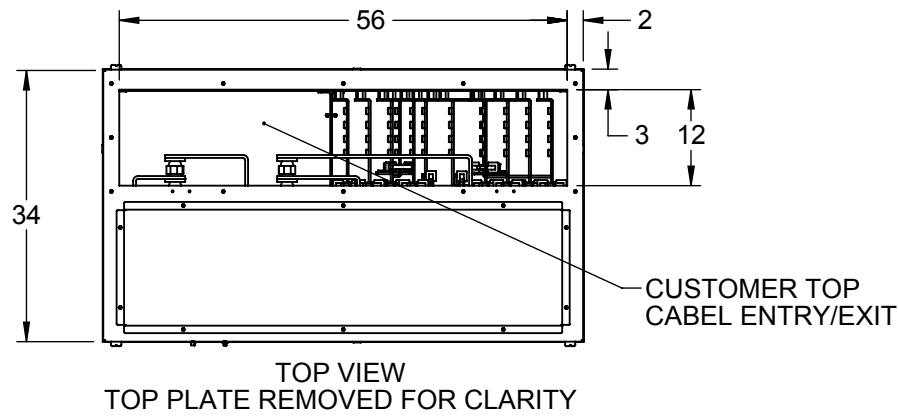
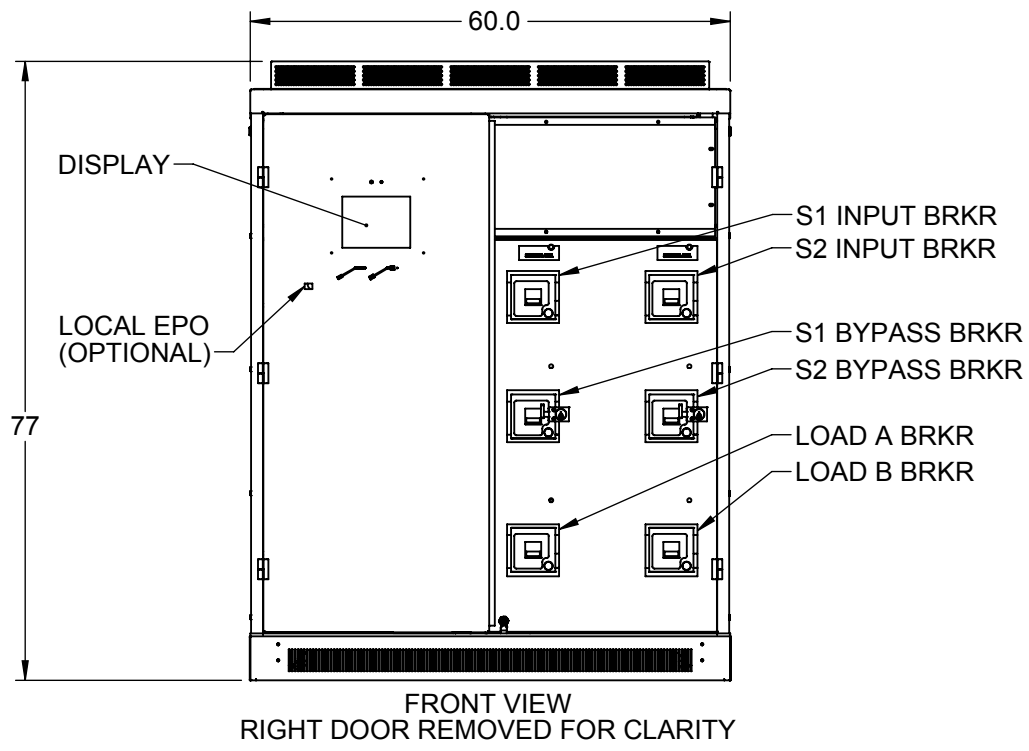


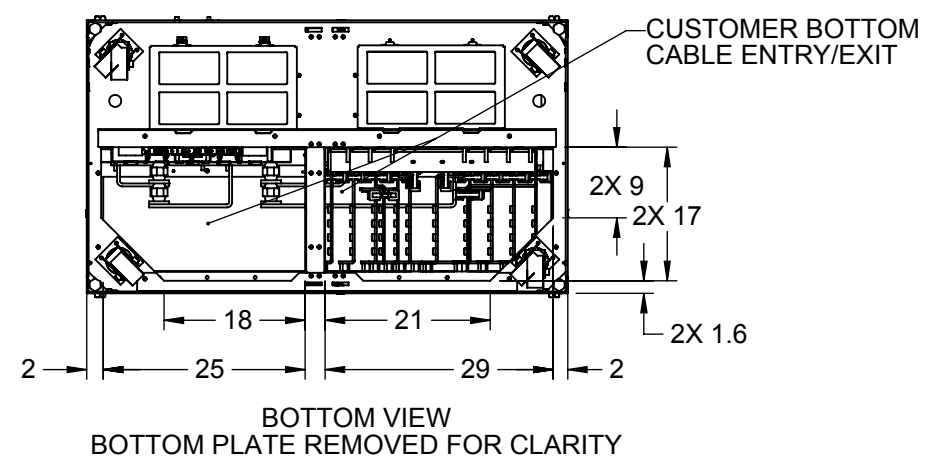
We reserve all rights in this document and in the information contained therein. Reproduction, use or disclosure to third parties without express authority is strictly forbidden. © Copyright 2014 ABB.



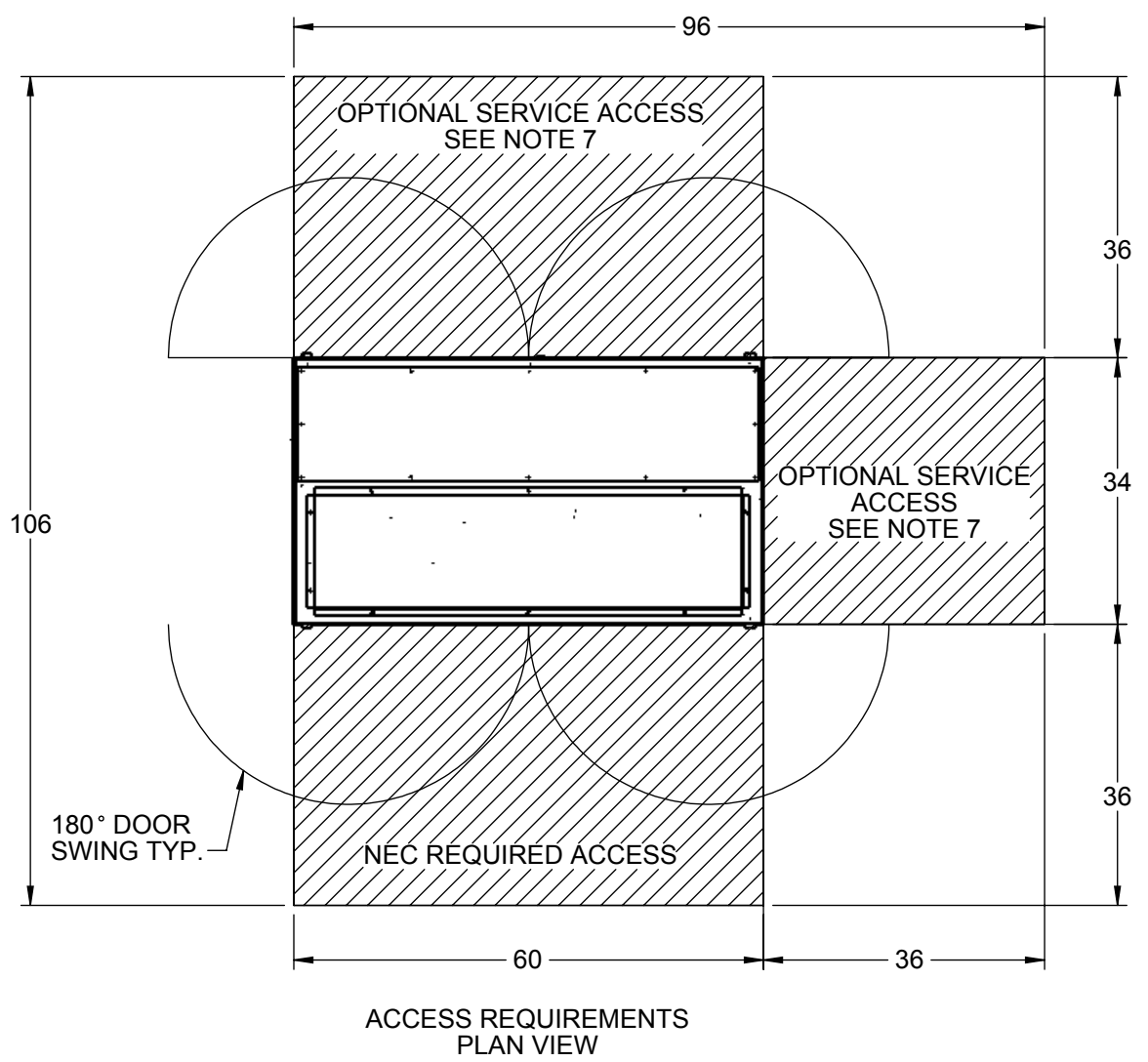
TOP VIEW
TOP PLATE REMOVED FOR CLARITY



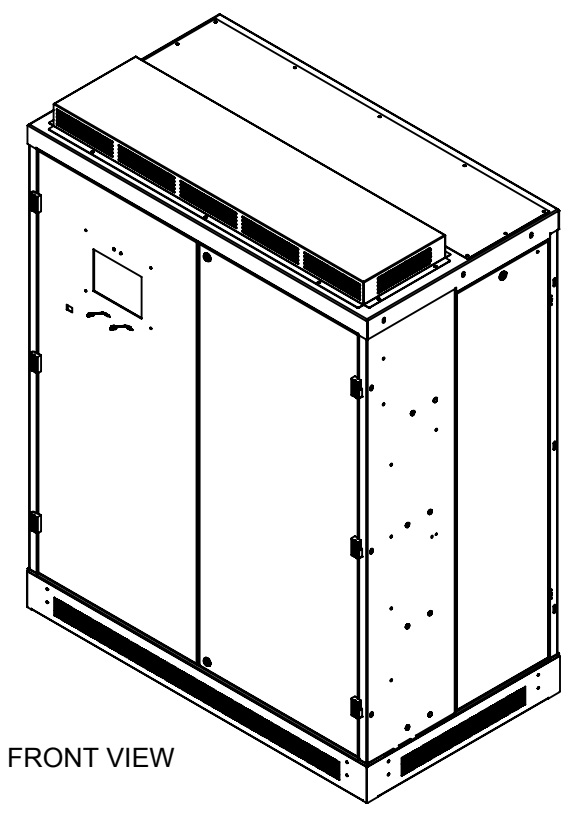
FRONT VIEW
RIGHT DOOR REMOVED FOR CLARITY



BOTTOM VIEW
BOTTOM PLATE REMOVED FOR CLARITY



ACCESS REQUIREMENTS
PLAN VIEW

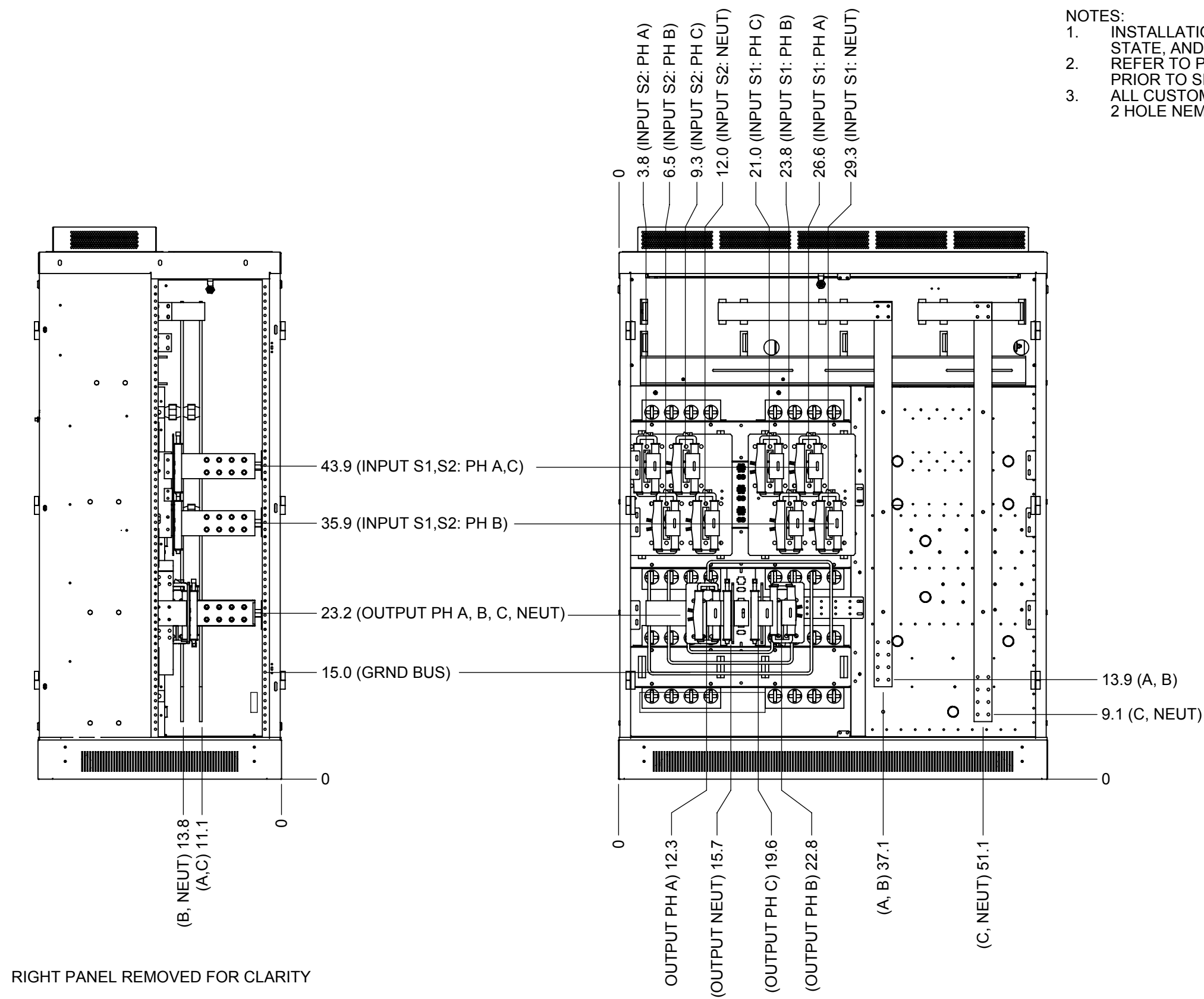


FRONT VIEW

- NOTES:
1. INSTALLATION SHALL COMPLY WITH ALL APPLICABLE NATIONAL, STATE, AND LOCAL CODES
 2. REFER TO PRODUCT DOCUMENTATION FOR ADDITIONAL DETAILS PRIOR TO SITE PREPERATION OR INSTALLATION.
 3. OPERATING TEMPERATURE RANGE: 0° TO 40°C.
 4. SYSTEM COOLING REQUIREMENTS: FORCED AIR COOLED.
 5. SYSTEM WEIGHT: 2000 LBS (908 kg).
 6. OPERATIONAL ACCESS VIA FRONT DOORS. MAINTENANCE AND CONNECTION ACCESS VIEW FRONT DOORS AND REMOVABLE SIDE PANEL OR REAR DOORS (DEPENDING ON ACCESS - SEE NOTE 7).
 7. RECOMMENDED MINIMUM CLEARANCES:
 FRONT = 36"
 REAR = 0.00" IF RIGHT SIDE ACCESS IS AVAILABLE
 = 36.00" IF NO RIGHT SIDE ACCESS IS AVAILABLE
 RIGHT = 0.00" IF REAR ACCESS AVAILABLE.
 = 36.00" IF NO REAR ACCESS AVAILABLE.
 TOP = 20.00"
 8. SYSTEM MUST HAVE ALL PANELS AND DOORS INSTALLED FOR PROPER OPERATION.
 9. FINISH: FRAME AND OUTER PANELS, POWDER COAT. INTERIOR, GALVANIZED ZINC ELECTROPLATE.
 10. CABLE ENTRY TOP OR BOTTOM, AS CONFIGURED PER CUSTOMER SPECIFICATION (BOTTOM ENTRY SHOWN)
 11. BUSBAR TERMINALS FURNISHED WITH NEMA 2-HOLE LANDING, 1.75" SPACING, 1/2-13 UNC THREAD. SEE SHEET 2 FOR DETAILS.
 12. DESIGNED FOR CABLE SIZES UP TO 4X 500MCM PER PHASE.

Material N/A	Finish N/A	Prepared PLH	Title OUTLINE DWG: 600A - 800A 4POLE SS4 RA
Tolerances X.XX = ±.03 X.XXX = ±.015	Unless Otherwise Specified: Inside bend radius .030 max. Remove all burrs and sharp edges. Part must comply with company document 94-10-000001. Interpret drawing in accordance with ASME Y14.5-2009.	Approved ZWS	Document Kind DetailDrawing
Hole ϕ = ±.005		Division/Dept. Power Protection	
Angle = ±1/2°			

A0	PLH	INITIAL RELEASE	10/22/2019
Rev.	ECN#	Resp.	Description
Revision Table			
Units Inch	Sheet Size B	Scale NTS	
Item ID SS4 4P 600A-800A	Item Rev. A0	Date Drawn 10/22/2019	
Document ID 94-9200-00071799	Doc. Rev. A0	Page 1 / 2	



- NOTES:
1. INSTALLATION SHALL COMPLY WITH ALL APPLICABLE NATIONAL STATE, AND LOCAL CODES.
 2. REFER TO PRODUCT DOCUMENTATION FOR ADDITIONAL DETAILS PRIOR TO SITE PREPARATION OR INSTALLATION.
 3. ALL CUSTOMER CONNECTIONS FOR INPUT & OUTPUT BUS ARE 2 HOLE NEMA 1/2-13UNC PEM NUTS ON 1.75 SPACINGS.