

PRODUCT SHEET

T&B® Cable Tray

Super-Duty Splice Plate™



Reduce structural supports and installation costs with the new Super-Duty Splice Plate™ for expansion and mid-span splicing.

— 01 Expansion splice

— 02 Mid-span splice

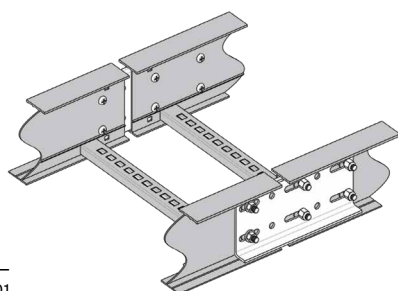
Note: For purposes of illustration, bonding jumper not shown but is required at expansion joints

The new ultra-robust Super-Duty Splice Plate allows cost-efficient expansion by reducing the need for structural supports. It can also be used for sturdy mid-span splicing. Engineers, end users and contractors benefit from significant cost reductions without sacrificing quality or structural integrity.

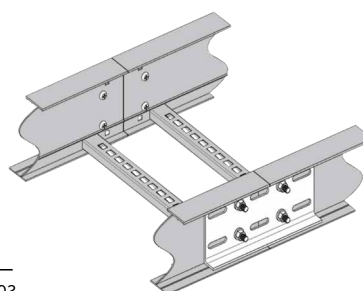
- Enables the use of less NEMA-recommended structural supports at the expansion joint, significantly reducing project material and labor costs
- Unique, reinforced design eliminates the need to drill and install additional hardware on the flange, saving time during installation
- Nylon washers make movement easier and reduce friction. No lubrication of the side rail required during installation or maintenance

- Extra-wide (13"/330mm) high-strength, heat-treated aluminum
- Unique design maximizes rigidity, resistance and overall strength
- Tested and rated for 6"/152.4mm aluminum side rails, Series AH36-AH66
- Nylon washers make movement easier, reduce friction
- No hardware required for installation on flange
- Allows for true contraction/expansion under full loads
- Plate is pre-drilled for both expansion and mid-span applications
- Supplied with all hardware required for both types of installation

For maximum job site flexibility, the Super-Duty Splice Plate can also be used for mid-span splicing.



— 01



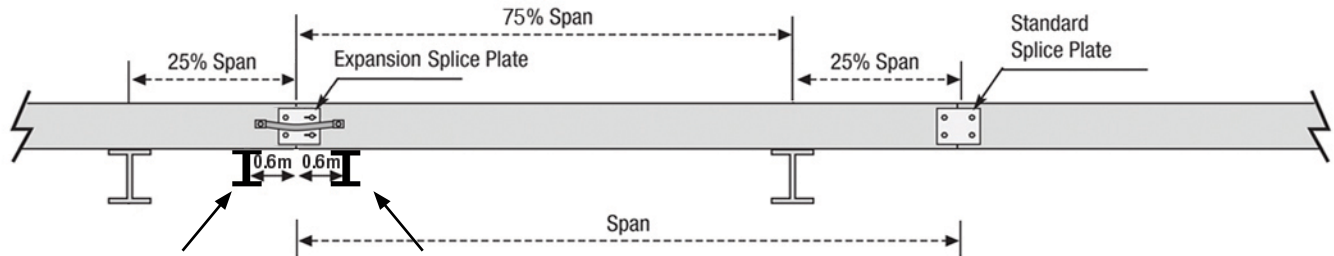
— 02

T&B® Cable Tray

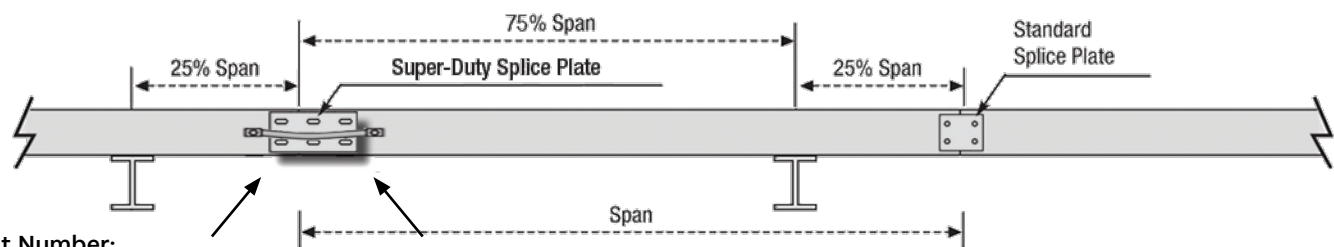
One splice plate, two solutions

Expansion splicing eliminates the need for additional NEMA-recommended supports

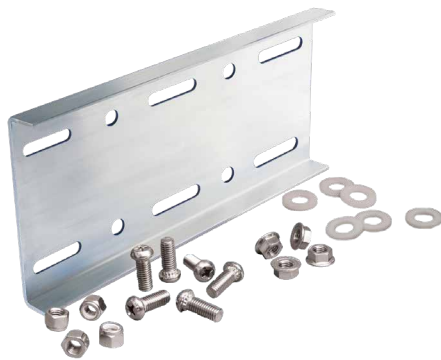
NEMA installation with additional supports



No additional supports needed with Super-Duty Splice Plate™



Cat Number:
ABW6SDP



The Super-Duty Splice Plate comes complete with all hardware required, for either expansion or mid-span splicing. Kit includes:

- 2 Super-Duty Splice Plates
- 8 nylon insert locknuts
- 8 serrated flanged locknuts
- 12 nylon washers (spacers)
- 12 hexagon socket button head cap screws
- Instruction sheet

ABB Industrial Products
860 Ridge Lake Blvd
Memphis, TN
USA

abb.com/category

© Copyright 2018 ABB. All rights reserved.
Specifications subject to change without notice.