

APPLICATION NOTE

# CP600 - RUNTIME PC HANDLING



# Contents

<b>1</b>	<b>Introduction .....</b>	<b>3</b>
1.1	Scope of the document .....	3
1.2	Compatibility .....	3
<b>2</b>	<b>Install CP600 PC Runtime .....</b>	<b>4</b>
<b>3</b>	<b>License CP600 PC Runtime .....</b>	<b>6</b>
<b>4</b>	<b>Configure CP600 PC Runtime.....</b>	<b>7</b>
4.1	Start CP600 PC Runtime .....	7
4.2	Download Project to CP600 PC Runtime .....	9
4.3	Path to stored projects in CP600 PC Runtime .....	9
4.4	Run multiple instances of CP600 PC Runtime .....	10

# 1 Introduction

## 1.1 Scope of the document

How to handle different options with CP600 PC Runtime.

## 1.2 Compatibility

The application example explained in this document have been used with the below engineering system versions. They should also work with other versions, nevertheless some small adaptations may be necessary, for future versions.

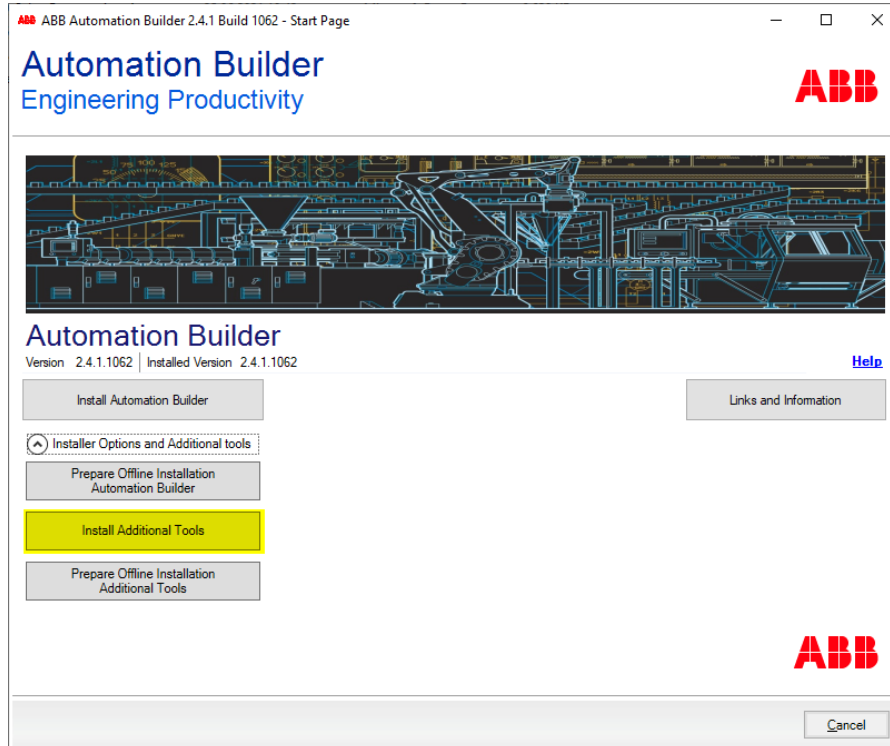
- CP600 Runtime PC V2.8.0 or newer
- Panel Builder V2.8.0 or newer

## 2 Install CP600 PC Runtime

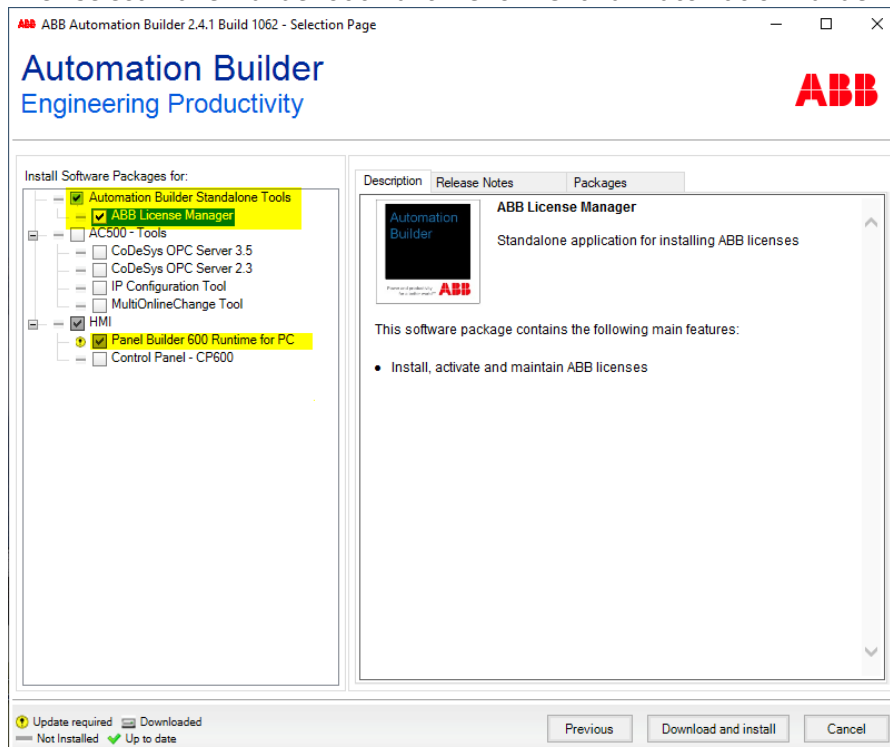
You need to install the CP600 PC Runtime with the Automation Builder installer. Download here:

<http://new.abb.com/plc/automationbuilder/platform/software>

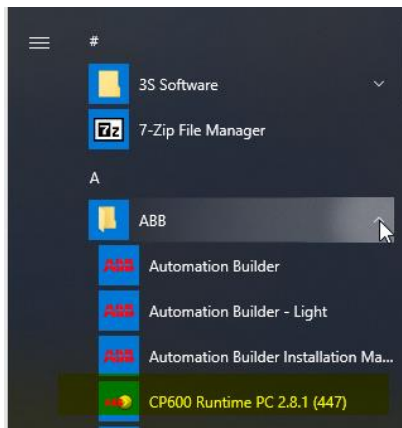
Automation Builder Installer will start. Select “**Install Additional Tools**”.



Then select “**Panel Builder 600 Runtime for PC**” and “**Automation Builder License Manager**”.

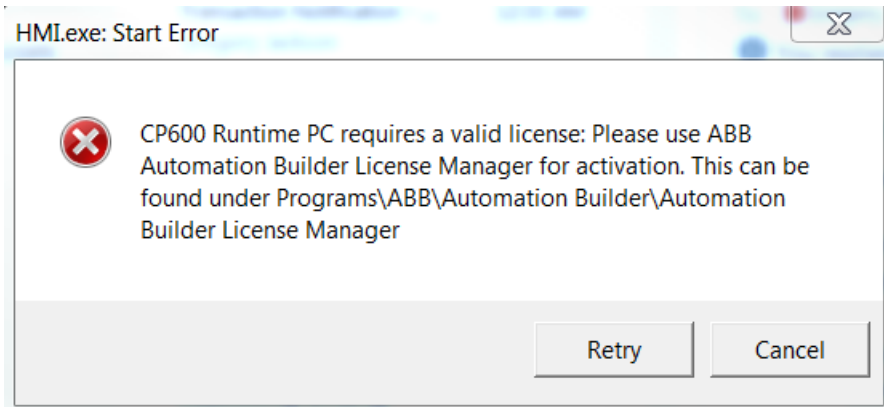


Afterwards, you can start “CP600 Runtime PC” via the start menu of your Windows.



### 3 License CP600 PC Runtime

If you get the following error, then you do not have installed an **additional** license for PC Runtime yet.



You need to have the 5 x 5 characters license activation code for the CP600 PC Runtime.

To activate the license in Windows 32bits please start:

C:\Program Files\ABB\Automation Builder License Manager\ABB Automation Builder License Manager.exe

Or

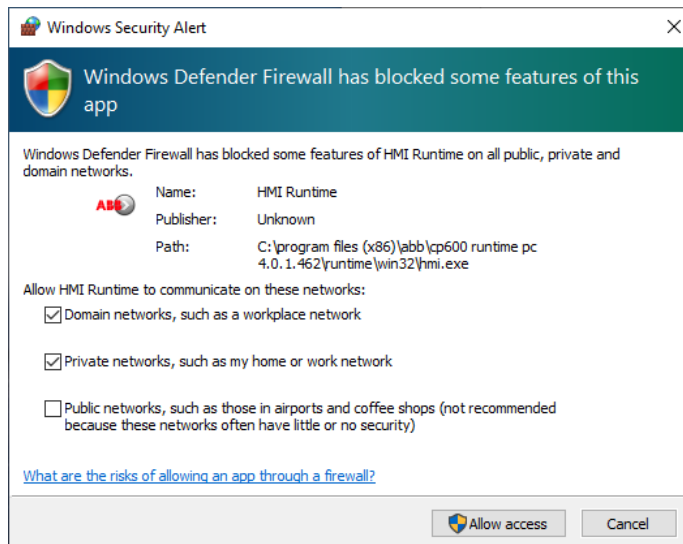
To activate the license in Windows 64bits please start:

**C:\Program Files (x86)\ABB\Automation Builder License Manager\ABB Automation Builder License Manager.exe**

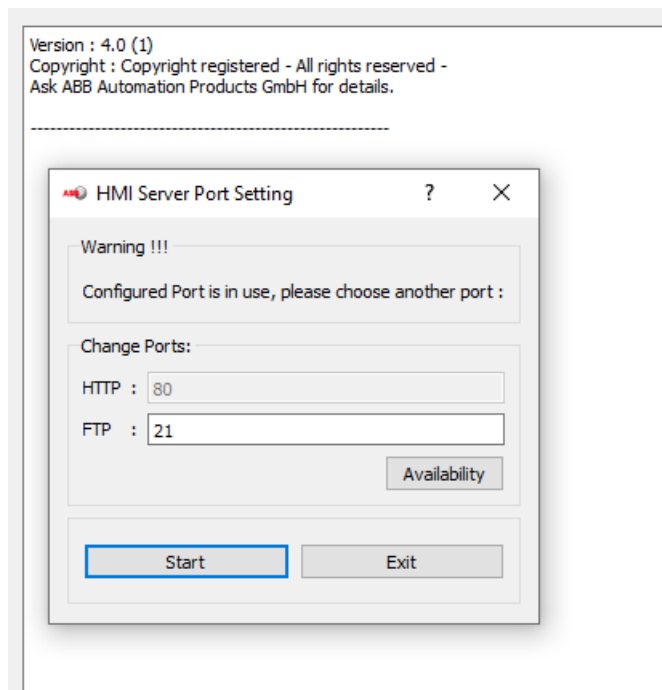
## 4 Configure CP600 PC Runtime

### 4.1 Start CP600 PC Runtime

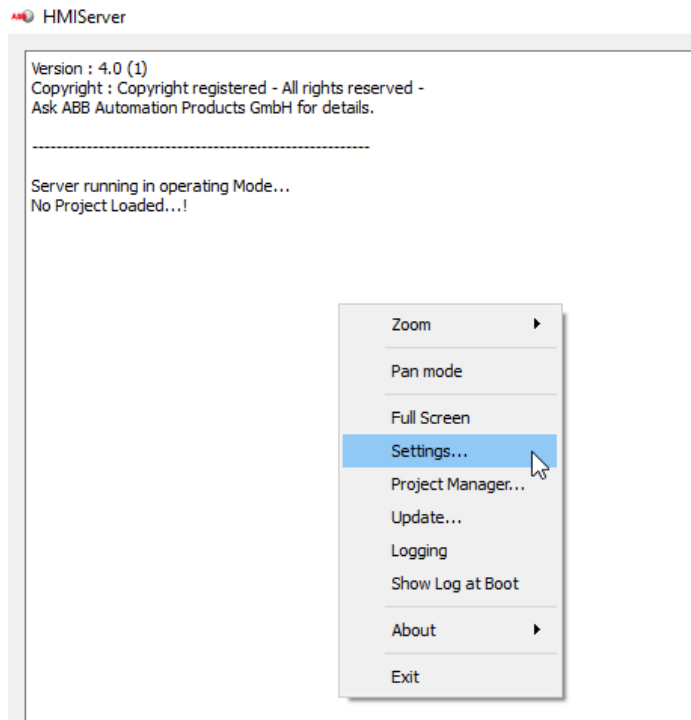
1. After start, it could happen, that you will be asked to trust the application



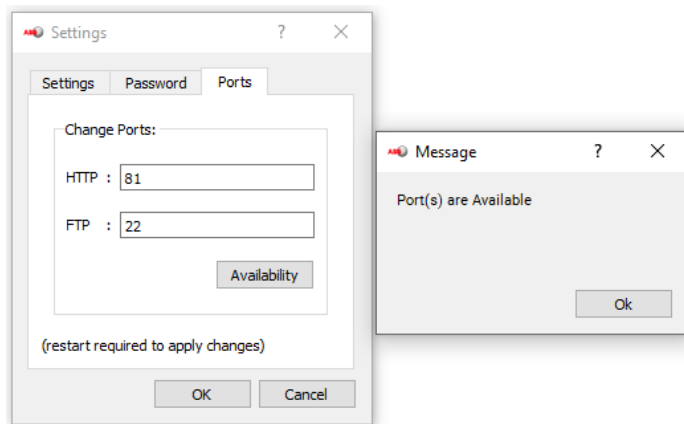
2. Start you CP600 Runtime PC application. You will see the screen below.



3. Right click on the mouse and select “**Setting...**”



4. At the tab “**Ports**”, make sure the HTTP and FTP ports are available by check the availability to check. If not, change the port number and check again.

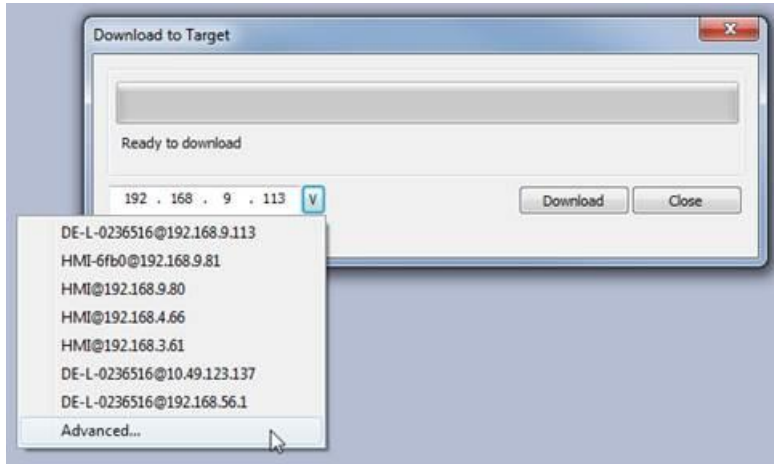


5. Restart your CP600 PC Runtime after completing the setting for the HTTP and FTP port.

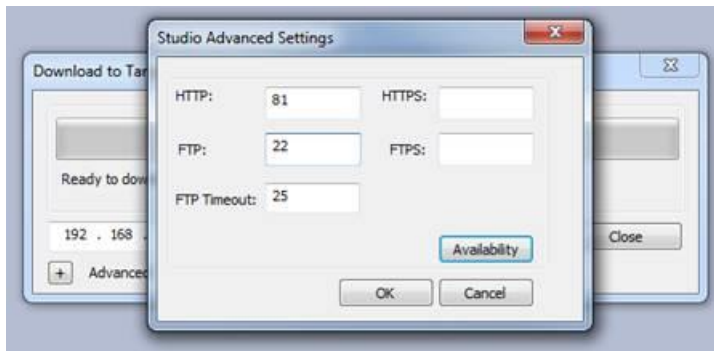


## 4.2 Download Project to CP600 PC Runtime

1. Create a new project or open an existing one. Inside Panel Builder 600, go to download to target. Click on the down arrow beside the IP address and select "Advanced...".



2. Set the HTTP and FTP port as specified in step 4 above, then click OK.



3. Now you can download the project to the PC runtime.

## 4.3 Path to stored projects in CP600 PC Runtime

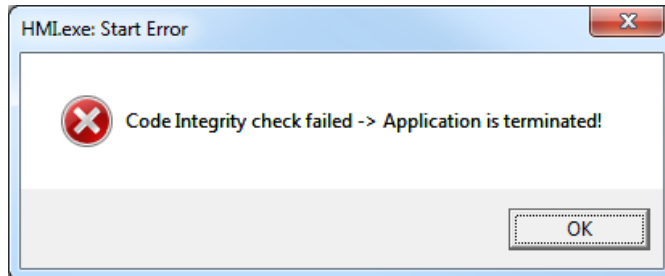
Your project will be stored and downloaded to this folder:

**C:\Users\<<username>\AppData\Roaming\ABB\<<PanelBuilderVersion>\server\workspace\<<project name>**

## 4.4 Run multiple instances of CP600 PC Runtime

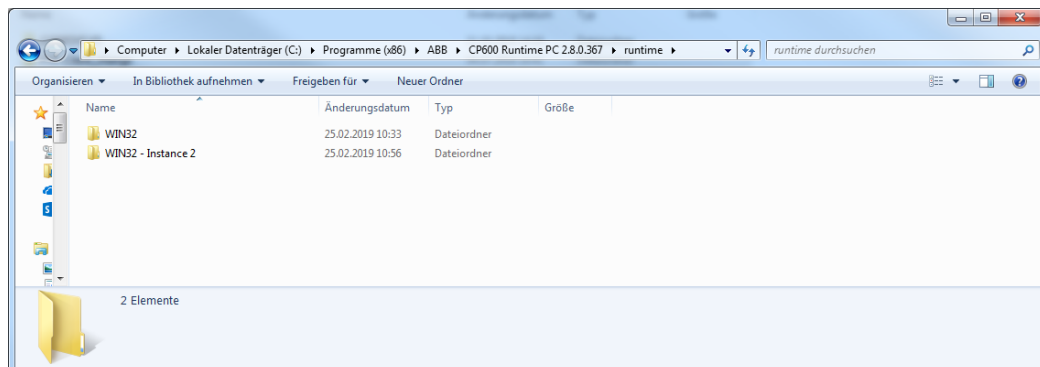
PB610 PC Runtime can run in multiple instances.

If you receive an error like this:



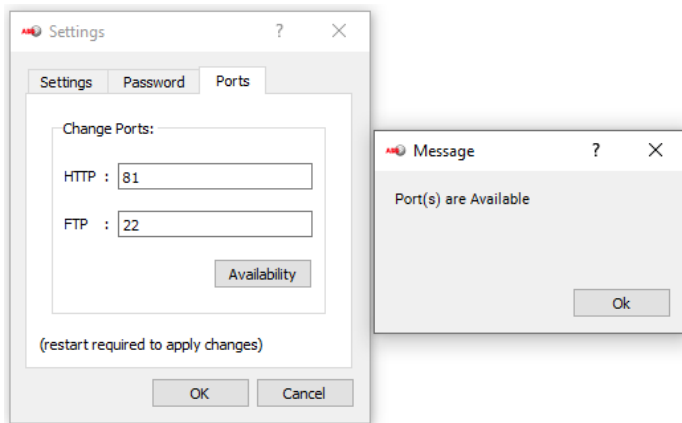
The firewall will block some ports. So, please add the application to trusted in your firewall settings inside windows.

1. Please navigate to your PC Runtime installation folder. Default folder: **C:\Program Files (x86)\ABB\CP600 Runtime PC <your version number>\runtime\**
2. Here you find **WIN32** folder, you need to copy this folder and paste in any directory (can be also desktop). Copy the entire folder as many times as the many instances you need
3. Start the application from the copied folders, running the “**HMIPortable**” shortcut executable



This way you are executing two separated and independent instances of the software, each with its own settings so once you have launched the instances if the second one finds the ports already in use you can set the new ports and these will be retained and used the next time it will be launched.

When you see a popup that the port is already used choose a free port for HTTP and FTP.

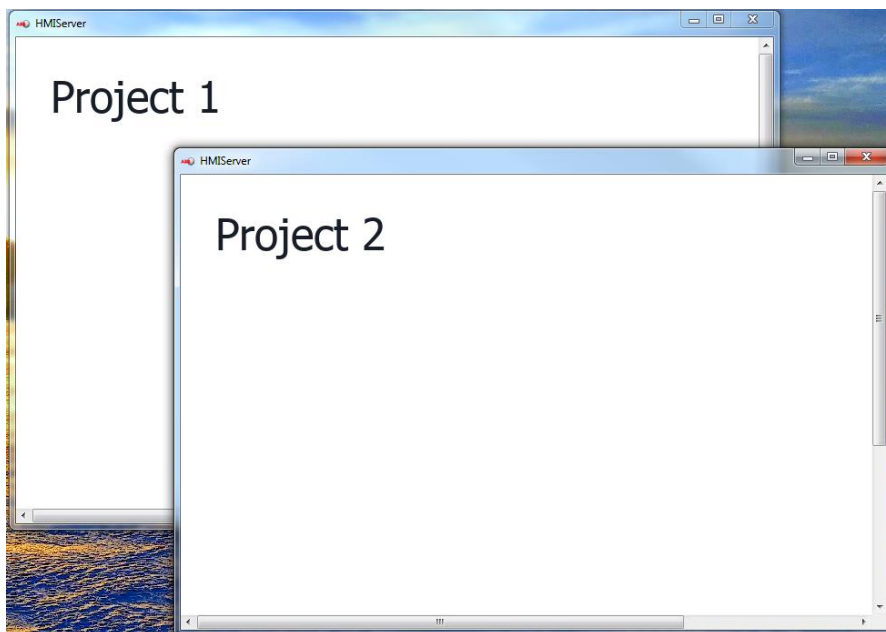


Note: This popup will not be shown if the ports are available and the application started.

The port used by PB610 PC Runtime can be changed from the Settings dialog.

Restart the application to apply the port change.

After everything is configured correctly, you can download your project to one of the both instances.





---

ABB Automation Products GmbH  
Eppelheimer Straße 82  
69123 Heidelberg, Germany  
Phone: +49 62 21 701 1444  
Fax: +49 62 21 701 1382  
E-Mail: [plc.support@de.abb.com](mailto:plc.support@de.abb.com)  
[www.abb.com/plc](http://www.abb.com/plc)

---

We reserve the right to make technical changes or modify the contents of this document without prior notice. With regard to purchase orders, the agreed particulars shall prevail. ABB AG does not accept any responsibility whatsoever for potential errors or possible lack of information in this document.

We reserve all rights in this document and in the subject matter and illustrations contained therein. Any reproduction, disclosure to third parties or utilization of its contents – in whole or in parts – is forbidden without prior written consent of ABB AG.  
Copyright© 2021 ABB. All rights reserved