



—  
**100 Series**  
General applications



—  
**500 Series**  
Challenging applications



—  
**700 Series**  
Specialized applications

# PH MEASUREMENT SIMPLIFIED

Find the right sensor right away with our color-coded range

# THE NEXT-GENERATION PH RANGE

## Making measuring effortless from end to end

Accurate pH and ORP measurements are essential to the way you work. For the best results, you need the right probe. And to keep up with your production schedule, you need one that is dependable and accurate.

ABB's latest intelligent, plug-and-play sensors are simple to select, own and operate. View real-time measurements and diagnostic data with EZLink™ digital connectivity. Designed for superior performance in specific applications, they take the worry out of water analysis.

**Simplified selection:**  
Choose the solution that works for you

**Superior performance:**  
Quality products, built to last

**Digitally enabled:**  
Plug-and-play design & sensor diagnostics

Our state-of-the-art automated glass production process provides consistent quality you can count on.

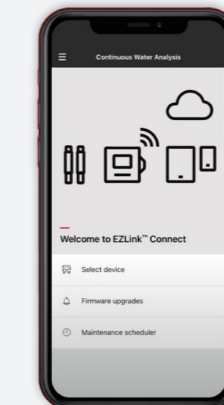
Our team of highly skilled engineers ensures every one of our sensor electrodes goes through a vigorous QA procedure and a calibration certification before it leaves our factory to make sure it meets our strict quality guidelines.



# WORK WITH AN EXPERT PARTNER

## Take the worry out of water analysis and ensure superior process control performance

Our next-generation sensors combine 70 years of expertise with the latest advances in digital sensor technology.



- **EZLink™ connectivity:** Plug-and-play digital sensor connection
- **Data at your fingertips:** Sensor health check to help maximize sensor lifetime
- **Optimal performance:** Enhanced measurement accuracy for fast temperature response
- **Industry compliant and designed with safety in mind.** Approved for FM/CSA/ATEX/IECEx/Marine use

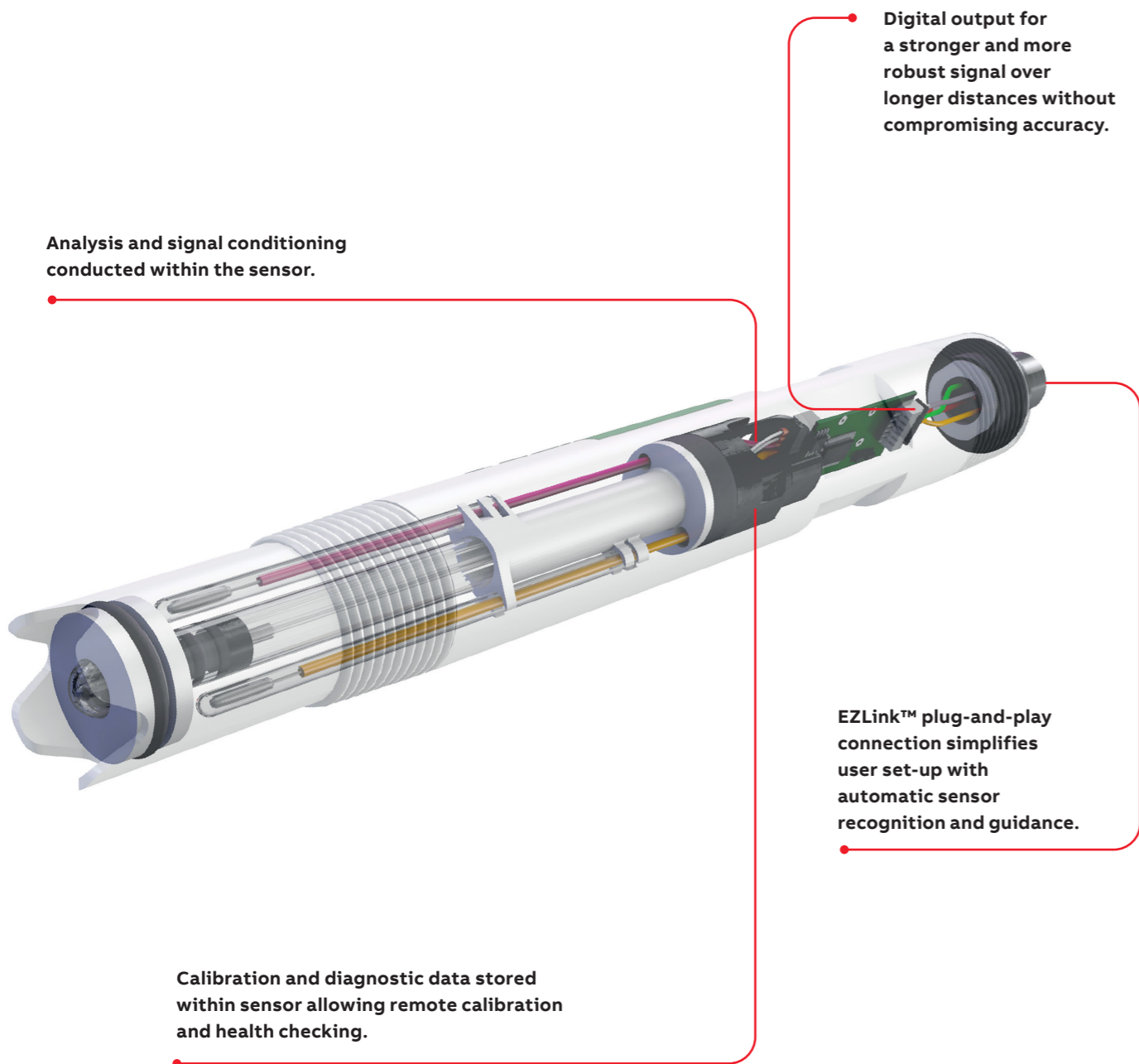
## Carry out continuous health checks

To ensure your process operates continually at maximum efficiency, you need the right information fast. Compatible with the EZLink™ Connect app for handheld smart devices, these intelligent sensors let you securely view real-time pH and/or ORP measurements at a glance and on the go. You can also run remote diagnostics, view upcoming maintenance tasks, schedule a sensor's replacement ahead of time, and find supporting documentation, updates and how-to videos.



# SMARTER, FASTER AND MORE ACCURATE MEASUREMENT

Explore the most versatile pH range that works the way you want to work



## 100 SERIES



### 100 E

Cost-effective pH measurement

The 100 E's universal 12mm design is practical, dependable and economically efficient.

**Ideal for:** OEM applications, irrigation/hydroponics, drinking water



### 100 GP

Complete confidence in general process applications

The 100 GP is versatile and highly accurate with fast response times.

**Ideal for:** Drinking water, wastewater and cooling waters



### 100 ULTRA

Lower maintenance costs and requirements

The 100 ULTRA has no electrolyte to top up, reducing the costs typically associated with pure water applications.

**Ideal for:** Low conductivity applications, such as boiler water, demin water, reverse osmosis, steam water analysis

## 500 SERIES



### 500 PRO

High performance in harsh conditions

The 500 Pro offers durability you can depend on with a triple-junction design that includes ion traps, reference shielding, and Vitron® Extreme O-ring protection.

**Ideal for:** Industrial wastewater effluent, scrubbers, dye baths, paper mills, mineral processes and marine applications



### 500 X

Heavy industrial

This high-pressure, high-temperature heavy industrial sensor has a unique wooden casing for exceptional poisoning and plugging resistance.

**Ideal for:** Pulp mills, oil & gas, chemical, petrochemical, mineral and metal processing

## 700 SERIES



### 700 ULTRA

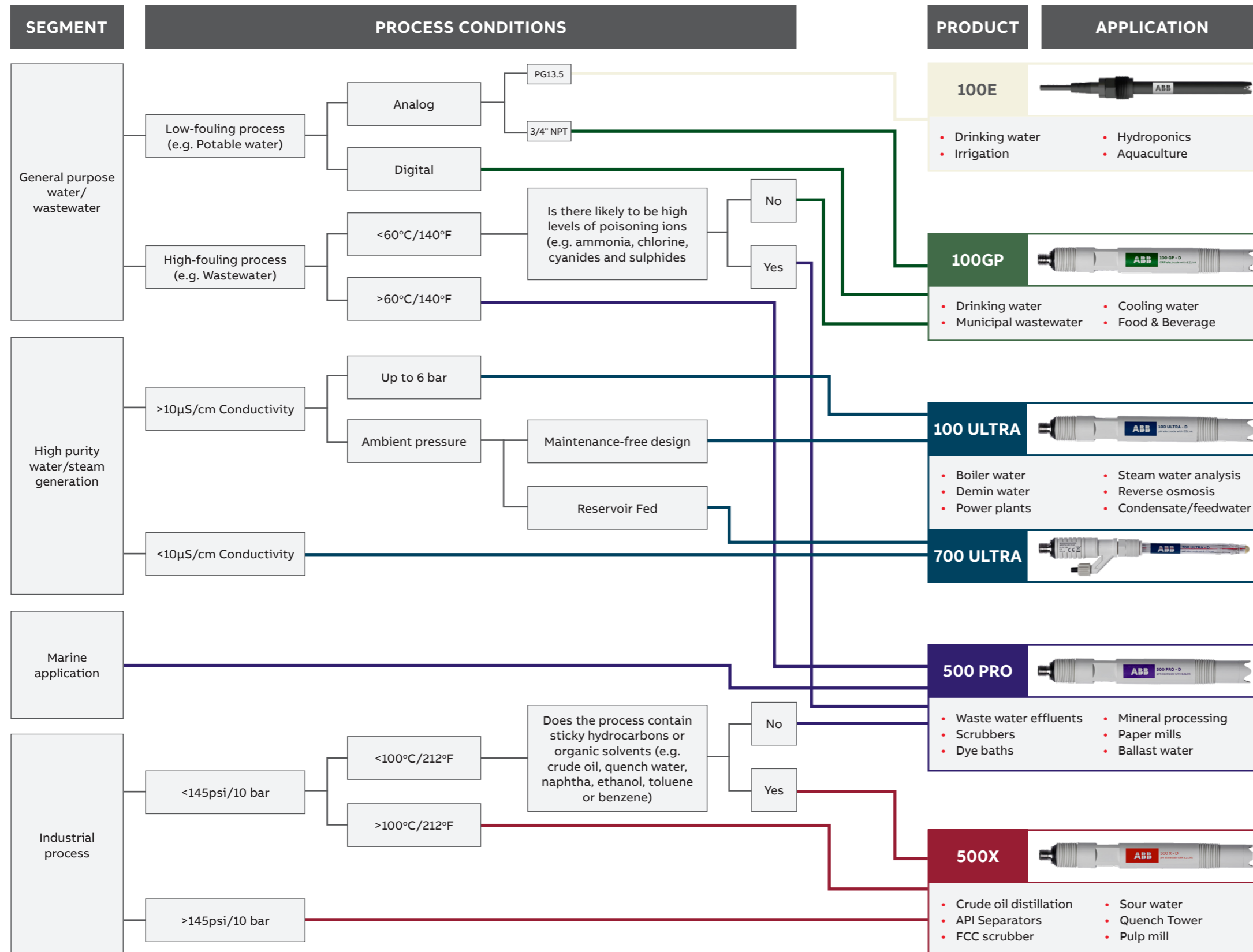
A rechargeable, reservoir-fed sensor

The 700 ULTRA's triple ceramic junction design delivers ultra-pure water pH accuracy quickly. It's also available as a panel-mounted system with integrated sample flow monitoring.

**Ideal for:** Ultra-pure water pH accuracy

# THE COMPLETE PH SENSOR RANGE

Find the right sensor for your organization



## Accessories



To complete the pH and ORP measurement solution, ABB offers a range of adaptable, durable and reliable mounting accessories with safety and ease-of-use in mind.

Whether you require in-line, retractable, dip or flow-through options, ABB offers a range of accessories which can accept 3/4" or PG13.5 sensor connection styles with configurability to match site-specific needs.



A complete list of accessories can be found by scanning the code

## Transmitters



In addition, ABB's range of transmitters combine the latest advances in intelligent sensor diagnostics and management with ABB's intuitive HMI operation and modular design philosophy.

Robust, proven and dependable, our transmitters offer a choice of industry standard communications protocols like Foundation Fieldbus, Hart, Profibus, plus a full range of approvals including hazardous area use.



Scan the code to learn more about transmitters



---

**ABB Measurement & Analytics**

For your local ABB contact, visit:  
[www.abb.com/contacts](http://www.abb.com/contacts)

[abb.com/wateranalysis](http://abb.com/wateranalysis)



Discover more