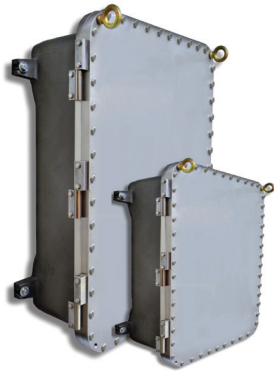


---

 TECHNICAL DATA SHEET

# Explosionproof enclosures – XPCJX series

## Cast stainless steel control/junction box

**T&B EX™**


XPCJX cast stainless steel explosionproof enclosures provide excellent corrosion resistance and durability where environmental conditions require extreme protection. With help from our engineering department, T&B EX™ explosionproof enclosures can be modified for installation with a variety of our explosionproof operator devices, accessories and world class ABB motor control components.

**Certifications / Standards:**



---

**Features & Benefits:**

- 8 standard sizes available
- Flat plate cover design
- Superior corrosion resistant, made with premium 316L cast stainless steel
- Pre-drilled for mounting panel (mounting panel is optional)
- Internal / external grounding screws
- Removable lifting eye bolts (standard on sizes 12x24 and larger)
- Lid-lifter cover alignment device on covers (standard on sizes 12x24 and larger)
- Standard cast-on mounting lugs / feet

---

**Options:**

- Conduit (NPT & Metric) and device (NPSM) drilling & tapping
- Auxiliary devices available: breather / drains, flame arrestors and operators
- Custom machining - milling, counter-boring, spot-facing, blind drilled holes, entries, chamfers
- Window kits

---

**Applications:**

- As a custom control panel, junction, or pull box
- To provide enclosures for splices and branch circuit taps, terminal blocks, relays and other electrical devices
- This solution is designed and tested to meet the

standards of all industries and applications where explosionproof protection is required. our T&B EX™ Cast Stainless Steel explosionproof enclosures provide protection against harsh and hazardous locations, found within onshore and offshore industries, petrochemical and marine applications.

- XPCJX cast stainless steel explosionproof enclosures provide an alternative to traditional cast aluminum explosionproof enclosures which may become compromised or could break down over time in highly corrosive areas

---

**Material / Materials / Finishes:**

- Enclosure – Type 316L cast stainless steel
- Cover bolts - Type 316L stainless steel
- Hinge kits - Type 316L stainless steel
- Gasket (“O”- ring type) - Nitrile

---

**Conforms to:**

- Class I, Division 1 & 2, Groups B, C, D
- Class II, Division 1 & 2 Groups E, F, G
- Class III
- Enclosure NEMA Type 4, 4X, 7, & 9
- UL 1203
- CSA C22.2 No. 25 & 30
- UL50
- For IECEx and ATEX certifications, consult factory

**Product selections, dimensions & weights**

Part no:	Inside nom. (in)			Overall (in)			Mounting lug (in)		Mounting bolt (in)	Shipping weight (lbs)	Panel part no:	Panel (in)		Hinge part no:
	L	W	D	A	B	C	E	F				W	H	
XPCJX081006	8	10	6	11 $\frac{3}{4}$	13 $\frac{3}{4}$	8	6 $\frac{1}{2}$	10 $\frac{3}{4}$	$\frac{7}{16}$	125	XPM0810	7	9 $\frac{1}{8}$	XHBK-2
XPCJX101408	10	14	8	13 $\frac{3}{16}$	17 $\frac{9}{16}$	9 $\frac{5}{8}$	10 $\frac{7}{8}$	13	$\frac{7}{16}$	195	XPM1014	8 $\frac{7}{8}$	12 $\frac{7}{8}$	XHBK-2
XPCJX121208	12	12	8	16 $\frac{1}{4}$	16 $\frac{1}{4}$	9 $\frac{5}{8}$	8 $\frac{5}{8}$	15 $\frac{3}{4}$	$\frac{5}{8}$	210	XPM1212	10 $\frac{7}{8}$	10 $\frac{7}{8}$	XHCK-2
XPCJX122410	12	24	10	16 $\frac{1}{4}$	28 $\frac{3}{4}$	11 $\frac{3}{4}$	18 $\frac{3}{8}$	15 $\frac{3}{4}$	$\frac{5}{8}$	380	XPM1224	11	23	XHCK-2
XPCJX161608	16	16	8	20 $\frac{7}{8}$	20 $\frac{7}{8}$	10 $\frac{1}{2}$	8 $\frac{3}{8}$	19 $\frac{3}{4}$	$\frac{3}{4}$	330	XPM1616	14 $\frac{3}{4}$	14 $\frac{3}{4}$	XHDK-2
XPCJX182410	18	24	10	22 $\frac{7}{8}$	28 $\frac{7}{8}$	12 $\frac{3}{8}$	18 $\frac{3}{8}$	21 $\frac{3}{4}$	$\frac{3}{4}$	590	XPM1824	16 $\frac{1}{2}$	22 $\frac{1}{2}$	XHFK-2
XPCJX242410	24	24	10	28 $\frac{7}{8}$	28 $\frac{7}{8}$	12 $\frac{3}{8}$	18 $\frac{3}{8}$	28	$\frac{3}{4}$	735	XPM2424	22	22	XHFK-2
XPCJX243610	24	36	10	28 $\frac{7}{8}$	40 $\frac{7}{8}$	12 $\frac{3}{8}$	29	28	$\frac{3}{4}$	985	XPM2436	34	22	XHFK-3

Note: Product must be installed in accordance with applicable national and local electrical codes.

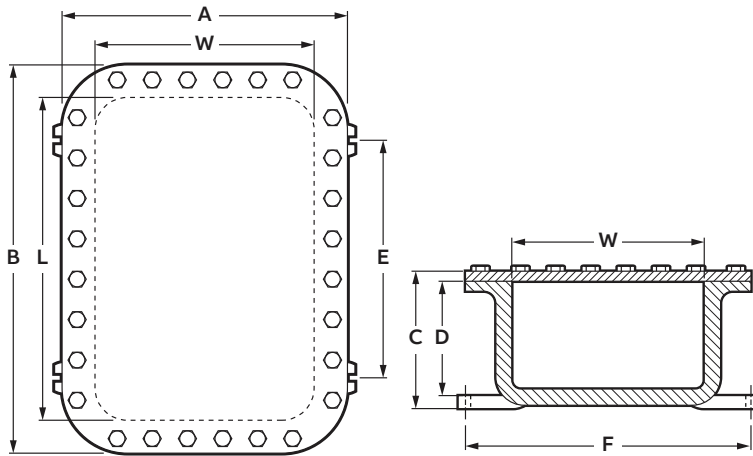


ABB Inc.  
Electrification Products  
Memphis, Tennessee  
USA

We reserve the right to make technical changes or modify the contents of this document without prior notice. With regard to purchase orders, the agreed particulars shall prevail. ABB Inc. does not accept any responsibility whatsoever for potential errors or possible lack of information in this document.

We reserve all rights in this document and in the subject matter and illustrations contained therein. Any reproduction, disclosure to third parties or utilization of its contents – in whole or in parts – is forbidden without prior written consent of ABB Inc. Copyright© 2017 ABB Inc. All rights reserved