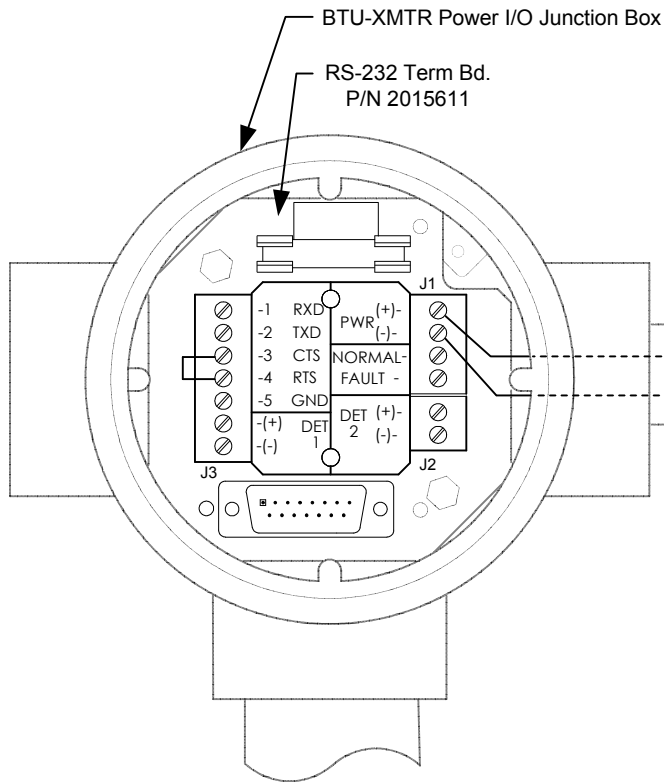


NOTES:

1. Prior to any installation in a classified hazardous location, verify installation methods by the Control Drawing referenced on the product's name tag.
2. To access termination board, remove Power I/O Junction Box front cover.



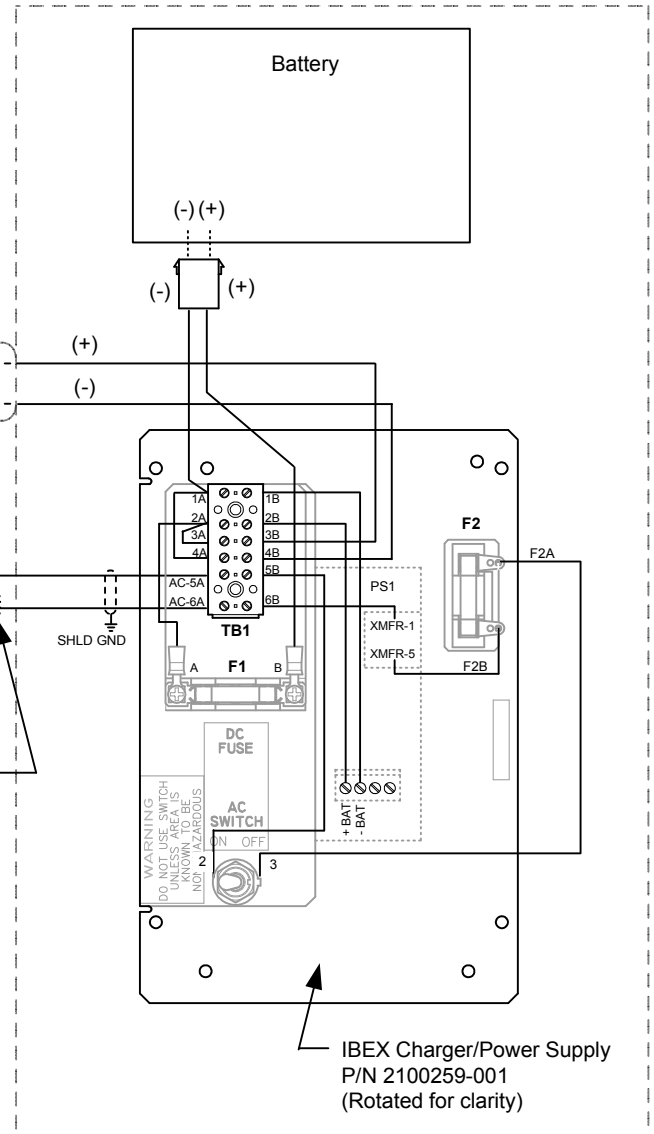
Hazardous Area

Non-Hazardous Area

Sealed Conduit Fittings
Or
Approved Cable Fittings

Use 14 AWG for up to 50 Feet.
For greater distances,
SEE NOTE 3

Power Supply Enclosure



IBEX Charger/Power Supply
P/N 2100259-001
(Rotated for clarity)

3. Wire size is a function of the distance between the BTU-XMTR and the DC Power Supply. Using 2.5 Amps as the maximum current draw, calculate an adequate wire size so that the voltage measured at the BTU-XMTR's Power I/O Junction Box is a minimum of 12.5 Volts.

REF: 2100259-RS

	TOTALFLOW	ACTION	DOC TYPE	TITLE	DWG NO.	REV	SHEET
	Products	L18398	UD	BTU 8000/8100 TO IBEX 115V AC CHARGER/ POWER SUPPLY	2102467	AA	1 OF 1