

Electrical installation solutions for buildings

Intrusion Alarm Systems

Index

ABB-secure@home	17/3
Introduction	17/3
Alarm Panels	17/14
Startkits	17/15
Motion Detectors	17/17
Magnetic Contacts	17/20
Technical Detectors	17/22
Arming Devices	17/23
Signalling Devices	17/24
Batteries and Installation Material	17/24
ABB Alarm System – GM/A	17/26
Alarm Panels	17/26
System Components	17/26
Motion Detectors	17/28
Arming Systems	17/29
Signalling Devices	17/30
Installation Material	17/30
Batteries	17/31
Conventional Intrusion Alarm Components	17/32
Motion Detectors	17/32
Magnetic Contacts	17/33
Glass Break Detectors	17/35
Lock Monitoring	17/37
Panic Buttons	17/38
Technical Detectors	17/39
Arming Systems	17/43
Signalling Devices	17/44
Installation Material	17/45
Batteries	17/46

You may also visit our Intrusion alarm systems website:



Intrusion alarm systems

Intrusion Systems – We make buildings safe and secure



ABB combines reliable alarm technology with easy-to-use home and building automation technologies. This allows the entire system to react directly in cases of emergency. The ABB offer includes a perfect solution: alarm panels, arming modules and alarm sensors (glass break sensors, motion detectors and more). The security system can be connected to building automation systems to become a smarter solution.

We offer reliable Intrusion Alarm Systems for intrusion-, hold-up- and technical alarms. The intrusion alarm systems are conform to the requirements of EN 50131.



Highest safety & security in case of an alarm

If an alarm is triggered, lights can be switched on and shutters can be opened as an additional deterrent. Even when you're at home, ABB solution can, for example, ensure the peripheral protection of your house and, in the event of an alarm, also switch on lights together with the siren and open the shutters.



Being safe at home, even when the alarm system is not activated

Imagine the following: you are at home, some intruders may try to gain access at night or using unwatched entrances. The alarm system is switched off. You can activate the panic function by a press of a button: lights switch on, blinds roll up.



Increased comfort and safety

By disarming the security system, the system switches the lights on in the entrance area and sets the heating to comfort mode. All the security sensors, such as those for water, gas, and smoke are active at all times. If there is an alarm, they control useful functions such as sockets, shutters and lights.

ABB-secure@home

Securing peace of mind

Whether at home or out and about, you and your loved ones can go about your daily activities knowing you don't have to worry about unwelcome intruders or dangerous incidents any time of day or night.

Unobtrusive simplicity

Installing and commissioning ABB-secure@home is straightforward and simple. Thanks to interference-proof and professional wireless devices it won't damage any existing brickwork or wall finishes. It has an intuitive architecture and is easy to manage via its smart central unit, dedicated remote control or remotely, from your smart-phone or tablet.

360° freedom

ABB-secure@home offers comprehensive security, protecting your home, day and night, both inside and out. Not only from intruders but also unfortunate events such as floods and fires. Being a highly evolved system, it's completely customizable to suit your individual lifestyle.

With ABB-secure@home security and simplicity are within easy reach.



All-round protection

Both indoors and out

Security starts outside and continues inside your home. Your peace of mind is guaranteed by comprehensive protection and monitoring solutions.

Volumetric detection

Any movement, any presence inside the house is detected by volumetric sensors. They are located in strategic points and are equipped with different coverage lenses according to specific needs, and they will automatically adjust to changes of the environmental conditions and provide adjustable sensitivity. The alarm signal can be selected between the instant or delayed mode.

Opening detection

Windows, doors, main or secondary entrances, shutters or blinds, any opening of the house is controlled by perimeter detection sensors. The contact safety can also be associated with inertial devices which detect a possible shock occurred on a door or a window. Many small eyes stand guard on your tranquility, to ensure total protection and maximum serenity.



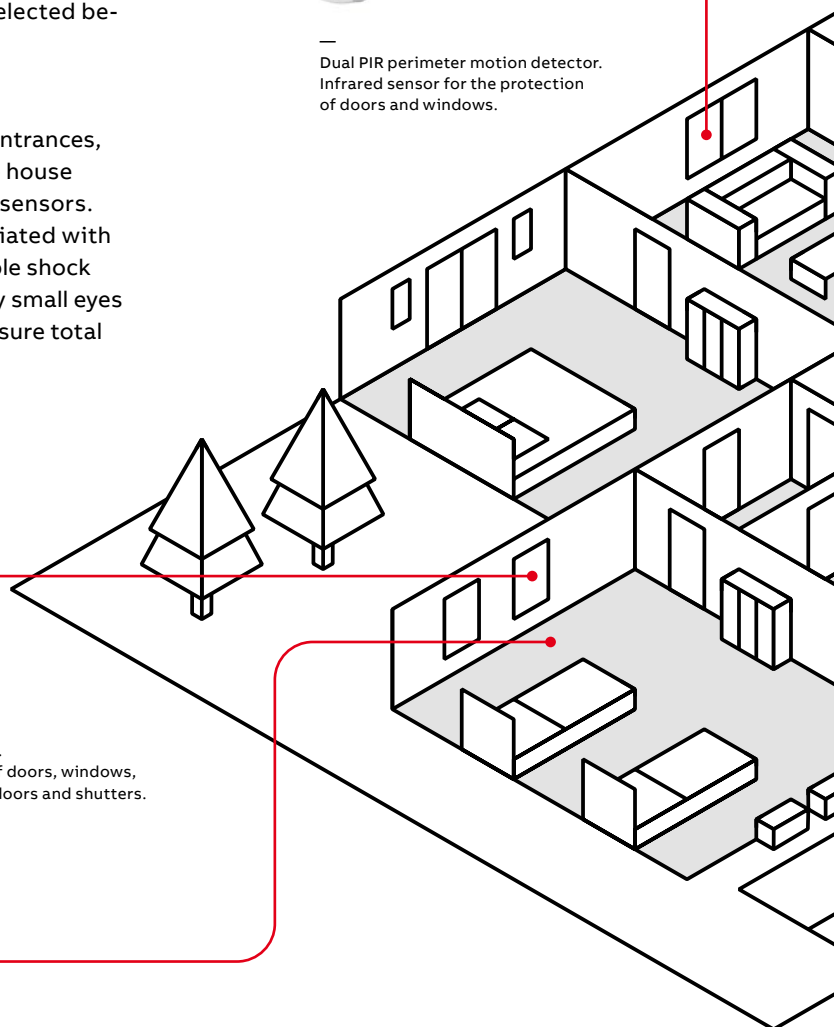
— Dual PIR perimeter motion detector. Infrared sensor for the protection of doors and windows.

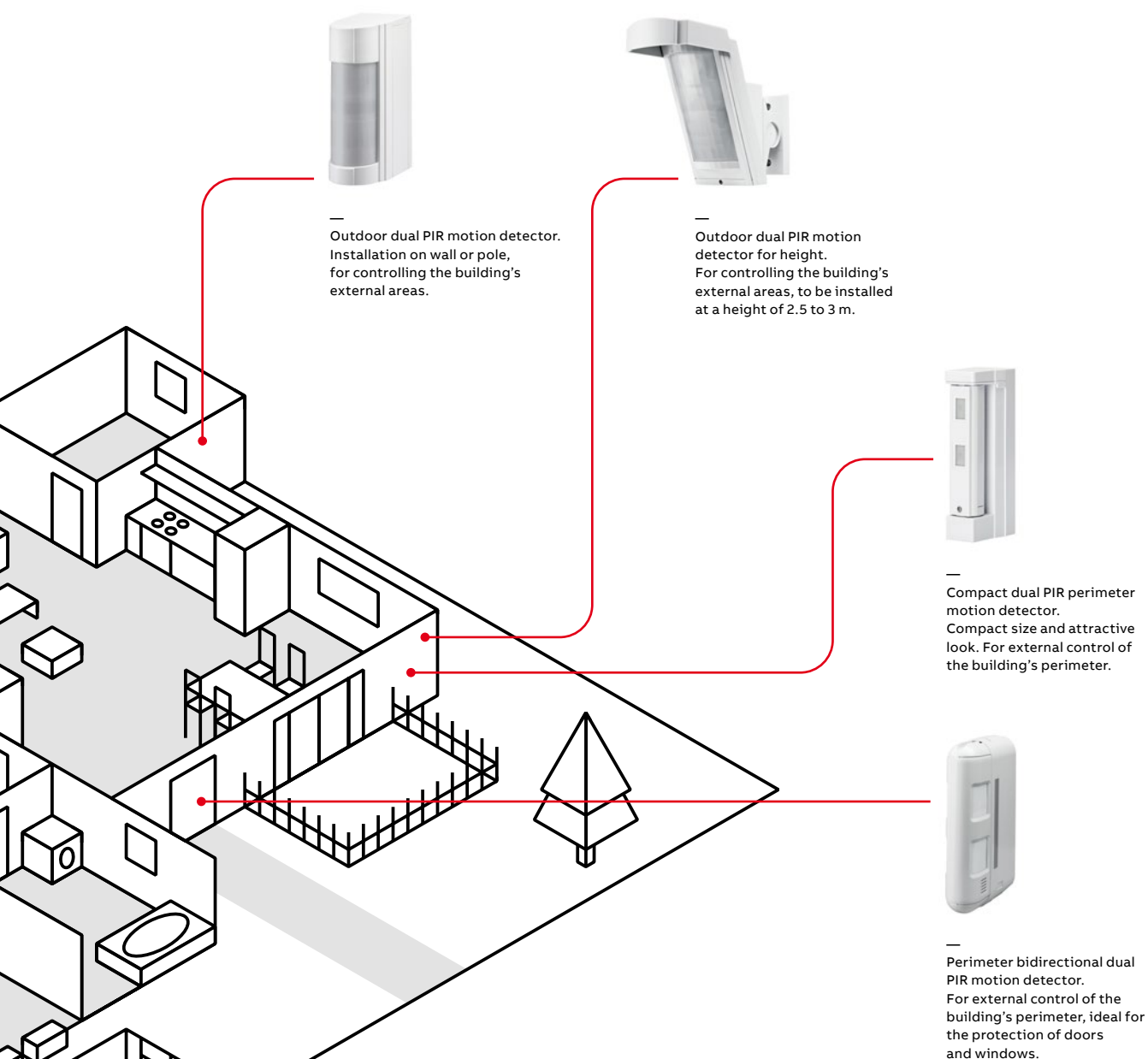


— Magnet reed contacts. Control the opening of doors, windows, overhead and sliding doors and shutters.



— Passive infrared detector with volumetric lens. Automatically adjusts to changing environmental conditions.





The first line of defence is outside

Ensuring maximum safety and tranquility is the mission of ABB-secure@home. That's why the system is not limited to ensuring the safety inside your home, but also its external spaces with sophisticated sensors ready to watch over every corner of the property and to detect any unwelcome presence, even before it approaches the building.

Wrapped in safety

The infrared sensors are positioned in the outdoor spaces, in the garden and around the entire house perimeter: bidirectional detectors, door/window detectors, main or secondary entrances: a professional wireless technology can monitor the perimeter of any building in an accurate and punctual manner.

Hassle-free security

Simple integration that simply works

Imagine an intuitive, state-of-the-art security system that works with wireless technology and fits directly into your home design with minimum fuss. With ABB-secure@home, imagination becomes reality.

No wires, no problems

ABB-secure@home is a highly evolved system that's easy to install into inhabited, furnished homes and existing designs. Its use of wireless radio frequency technology minimizes invasiveness and disturbances during installation and when your system needs change in the future, it will adapt with them.

Safety and plug-and-play protection

With the connection to ABB-free@home® you have access to your system wherever you are. The ABB-secure@home configuration is immediate. Once installed and turned on, the sensors are automatically recognized by the central unit. The parameters are fully customizable according to your customers' needs. Then just press OK and you're done!



State-of-the-art technology

At the heart of everything we do

A processor and an integrated GSM (Global System for Mobile Communications) interface are at the heart of ABB-secure@home. This technology will protect your most valuable assets and itself from external tampering and interference.

Smart radio, maximum security

The wireless ABB-secure@home system transmits and receives at 868.3 MHz, making it able to distinguish and interpret signals with absolute precision. The bidirectional encrypted communication allows you to limit energy consumption and provide greater security during transmission, while everything is guaranteed by a proprietary protocol. Integrated CSMA (Carrier Sense Multiple Access) technology allows the optimisation

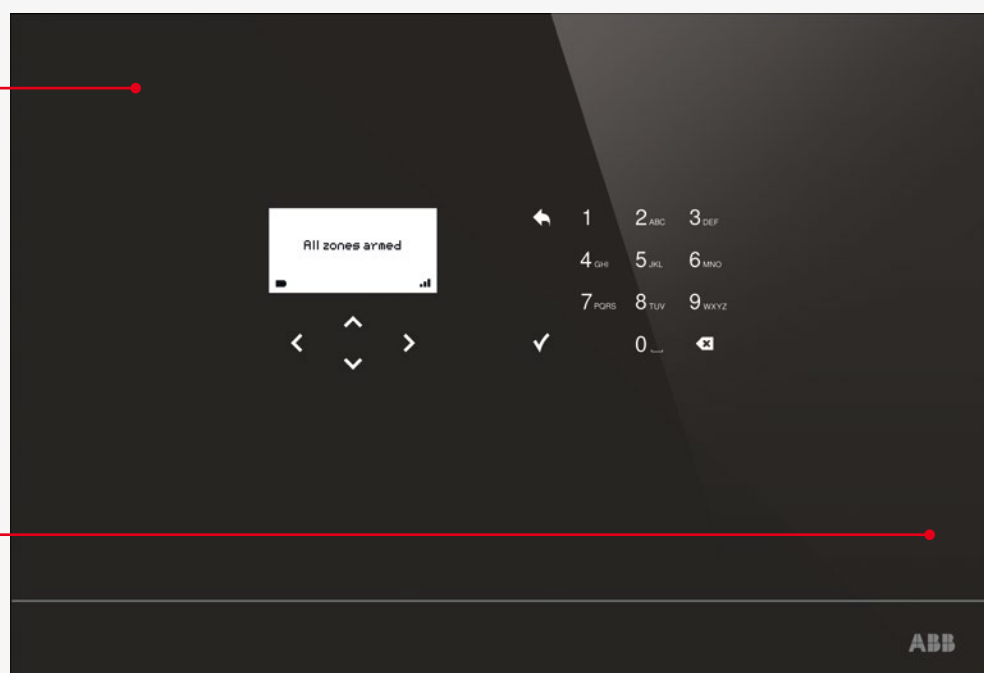
of communication to avoid interference and disturbance. The alarm transmitter and receiver verify the absence of band occupancy, ensuring continuously successful communication.

A system that's always connected

The ABB-secure@home central unit is equipped with an integrated GSM interface through which each alarm is immediately sent via voice calls and/or SMS to all programmed telephone numbers.

868.3 MHz
bidirectional
encrypted
proprietary
protocol plus a
unique rolling
code for all
arming/dis-
arming controls

Integrated
GSM module
for sending
alarms via voice
call or SMS



Beautiful flexibility

Stylish remote controls

Technology and design are always in harmony with ABB-secure@home. Each control device is built with a clear intention to please at first glance.

Comfort in your hands

ABB-secure@home puts the power of your anti-intrusion system directly into your hands in the most simple way possible: with a stylish plug-and-play remote control. Four keys are fully configured and one is freely configurable. The most common functions are assigned to the four preconfigured keys, to arm the intrusion zones in Home Stay or Home Away mode, to disarm all the anti-intrusion zones, and also to launch a panic alarm.



A remote control that manages everything

A lightweight object with heavyweight power. The ABB-secure@home remote control allows you to operate your anti-intrusion system in the most simple way possible: using five keys and five LEDs, fully configurable. Each of them can be configured to arm or disarm anti-intrusion zones and special functions such as robbery alarm, panic alarm and first aid alarm. All this contained in an elegant, attractive design.



Security is a breeze

Programmable in a few steps

—
01 Authentication.
Once you have booted the system from the central unit, authenticate yourself as an installer.

—
02. Connection to ABB-free@home®.
If the central unit is connected to the free@home bus, you can pair the two systems just copying the shown key into the free@home dedicated menu.

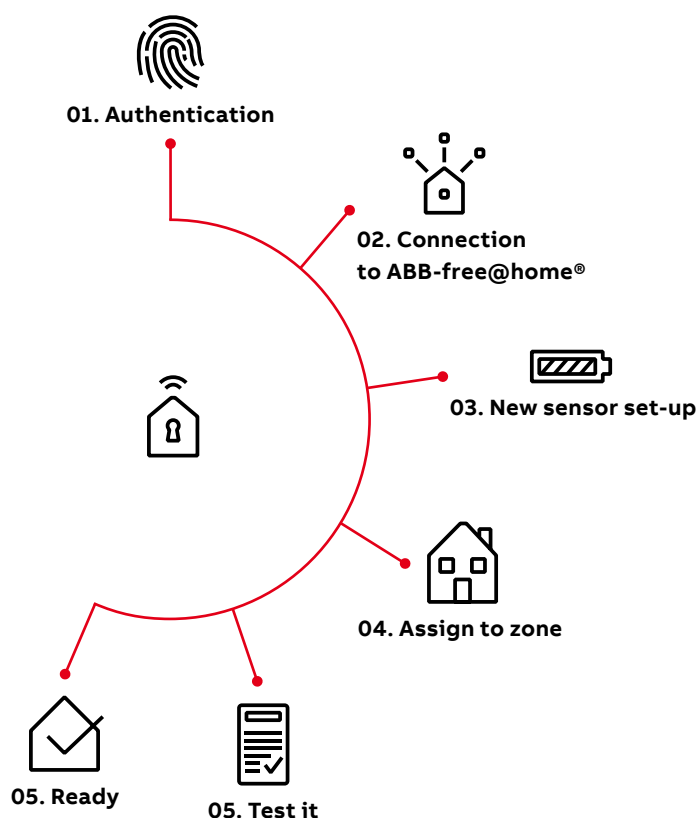
—
03 New sensor set-up.
To power the sensor, connect the battery. The central unit registers the sensor automatically.

—
04 Assign to zone.
Choose the home zone to place the sensor or create new ones to assign it to.

—
05 Test it.
As you finish the initial set-up, the central unit automatically performs a sensor test and shows you a report to check everything is working properly.

—
06 Ready.
The initial set-up lets you also easily add notification and installer contacts, create the user PIN and assign the allowed zones.

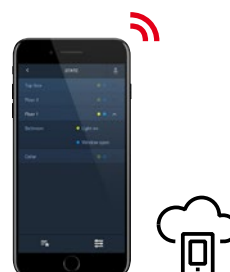
When a system is well thought out, everything becomes easier, and configuring ABB-secure@home is just as easy as installing it. The initial set-up takes only a few simple steps and you are done. It saves you valuable working hours and will help you gain more customers, too.



Comfort through security

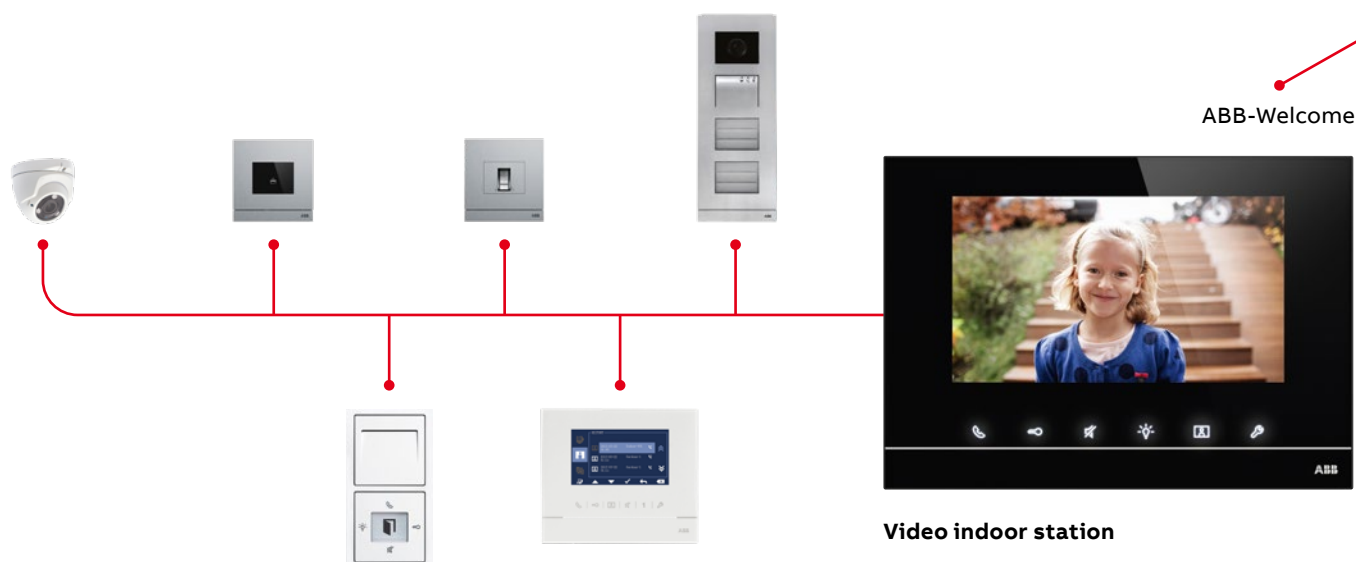
Within a fully integrated system

The residential security system, ABB-secure@home, is part of the ABB Smarter Home system alongside the ABB-free@home® home automation system, and the Welcome door entry system.



Easy remote control

Always in the know about what is happening at home. Via app you can check at any time whether all the windows are closed or if someone has forgotten to switch off the lights. This makes it possible to maintain control – even while on holiday.



Central unit



ABB-secure@home

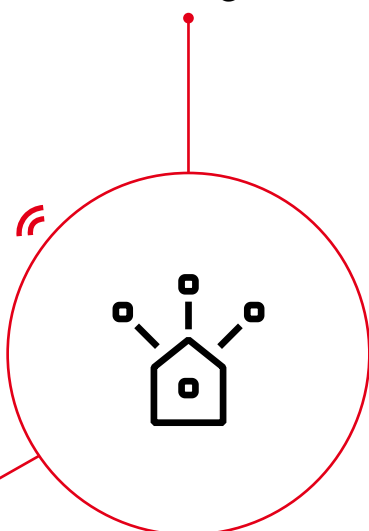
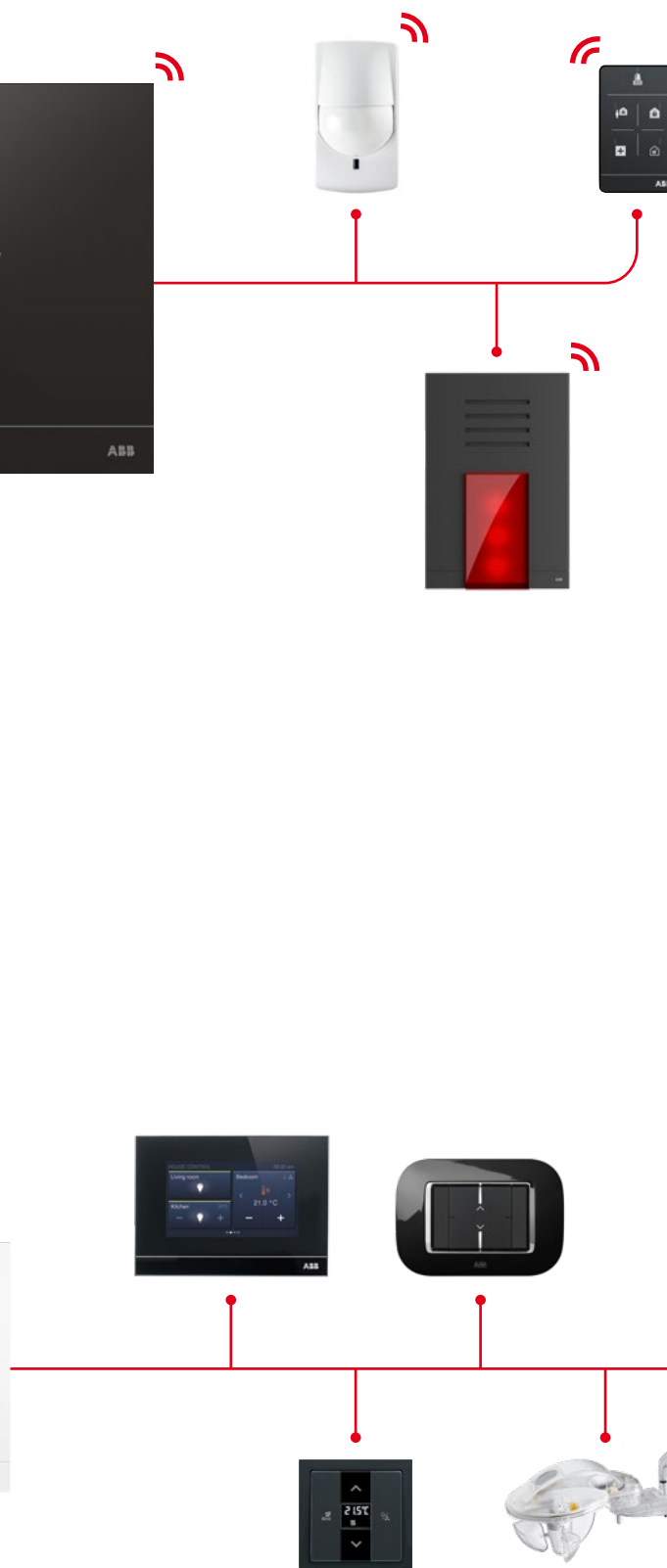


ABB-free@home®



System Access Point

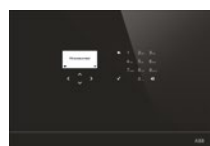


Flexible security

A range of products around you

ABB-secure@home has what it takes to work with you, in exactly the way you want it to. A range of products stand ready to help make your project special and to offer your customers the safety and security they deserve.

System devices



01



02



03



04



Home safety



05



06



07

Indoor security



08



09



10



11



12



13

01 ABB-secure@home central units

02 Remote control

03 Pre-configured remote control

04 Outdoor alarm sirens

05 Smoke detector

06 Heat detector

07 Water detector

08 Perimeter magnet reed contact detector

09 Dual passive IR perimeter motion detector

10 Indoor passive IR motion detector

11 Roller shutter sensor

12 Magnet reed contact for surface/flush mounting

13 Rolling door magnet reed contact

Outdoor security



15



16



17



18

15 Compact dual passive IR
perimeter motion detector

16 Outdoor dual passive
IR motion detector

17 Perimeter bidirectional dual
passive IR motion detector

18 Outdoor dual passive IR
motion detector for height



Intrusion Alarm Systems

ABB-secure@home – Alarm Panels

Alarm Panels

Central Unit

The central unit is at the heart of the ABB-secure@home® system; it complies with EN 50131-1 grade 2 class I standard.

It communicates with other system devices based on radio frequency with two-way protocol, by making the following features available to the user:

- management of anti-intrusion and home safety devices;
- management of anti-panic signaling;
- alarm notification via voice or SMS messages to the programmed telephone numbers;
- interfacing ABB-free@home® to integrate safety and home automation systems (only SAS.W1 and SAS.W2 models).

The central unit, equipped with a backup battery, indicates a power failure and its subsequent recovery inside the home.

Via the integrated GSM unit, available into some specific models, it can send alarms both in speech synthesis and SMS messages, to a maximum of 12 telephone numbers. In addition, the GSM unit enables the reception of commands through SMS messages.

Spare rechargeable battery pack (Order code: 2CSY255111R0801).



SAS-W1.1E

SAS-W2.1E



SAS-W1.1F

SAS-W2.1F



SAS-W3.1E

Description	Mod. width	Order details		Price 1 piece	Weight 1 piece	Pack unit
		Type code	Order code		kg	pc.
with GSM, Square, glass white	–	SAS-W1.1E	2CSY233921R0003		1.37	1
Basic, Square, glass white	–	SAS-W2.1E	2CSY245181R0004		1.37	1
with GSM, Square, glass black	–	SAS-W1.1F	2CSY233541R0003		1.37	1
Basic, Square, glass black	–	SAS-W2.1F	2CSY255461R0004		1.37	1
Basic, Round, white	–	SAS-W3.1E	2CSY234925R0005		1.37	1

Intrusion Alarm Systems

ABB-secure@home – Startkits

ABB-secure@home Startkit

The startkits represent the installation base for the solutions of extended system, containing all the basic devices usually common to any installation. They are easily expandable to fit any customer needs.

Description	Mod. width	Order details		Price 1 piece	Weight 1 piece	Pack unit
		Type code	Order code		kg	pc.
Startkit GSM, white	–	SSK-W1.1E	2CSY295371R0051		4.87	1
It includes the following:						
Central Unit with GSM, Square	–	SAS-W1.1E	2CSY233921R0003		1.37	1
Preconfigured Remote Control, Square	–	SAD-W1.1F	2CSY202821R0305		0.07	1
Perimeter Magnet Reed Contact Detector	–	SMC-W1.1A	2CSY255791R0104		0.165	1
Indoor Passive IR Motion Detector	–	SMD-W1.1A	2CSY255701R0105		0.09	1



SAS-W1.1E



SAD-W1.1F



SMC-W1.1A



SMD-W1.1A

Intrusion Alarm Systems

ABB-secure@home – Startkits

ABB-secure@home Startkit

The startkits represent the installation base for the solutions of extended system, containing all the basic devices usually common to any installation. They are easily expandable to fit any customer needs.



SAS-W2.1E



SAD-W1.1F



SMC-W1.1A



SMD-W1.1A

Description	Mod. width	Order details		Price 1 piece	Weight 1 piece	Pack unit
		Type code	Order code		kg	pc.
Startkit Basic, white	–	SSK-W2.1E	2CSY295411R0050		4.87	1
It includes the following:						
Central Unit Basic, Square	–	SAS-W2.1E	2CSY245181R0004		1.37	1
Preconfigured Remote Control, Square	–	SAD-W1.1F	2CSY202821R0305		0.07	1
Perimeter Magnet Reed Contact Detector	–	SMC-W1.1A	2CSY255791R0104		0.165	1
Indoor Passive IR Motion Detector	–	SMD-W1.1A	2CSY255701R0105		0.09	1

Intrusion Alarm Systems

ABB-secure@home – Motion Detectors

Motion Detectors – Indoor



SMD-W1.1A

Indoor Passive IR Motion Detector

The indoor passive IR motion detector reveal the presence of intruders inside the controlled area, providing pet immunity. The is equipped with a passive IR sensor with Fresnel lens and by default it operates with a wide-ranging coverage (90° angle and 11 m distance); it is possible, through a different configuration, to make it operate with a long-distance coverage (10° angle and 17 m distance). This device communicates bidirectionally with the central unit that supervises it at programmable intervals (every 15 minutes by default); it can be programmed in real time or delayed mode (with a programmable delay from 0 to 90 seconds that can be different for input and output).

It is possible to configure these parameters during the system commissioning.

Spare lithium battery (Order code: 2CSY255331R0802).

Description	Mod. width	Order details		Price 1 piece	Weight 1 piece	Pack unit
		Type code	Order code		kg	pc.
white	–	SMD-W1.1A	2CSY255701R0105		0.09	1
Mounting Bracket for IR Motion Detector, white	–	SIM-W2.1A	2CSY255101R0607			1



SKP-W2.1A
SMD-W2.1D

Dual Passive IR Perimeter Motion Detector

The dual passive IR perimeter motion detector protects doors and/or windows using a tent-type cover on the opening and two infrared sensors. The device is also equipped with an extra input (it can be disabled, leaving only the active IR mode) where you can connect an external wired magnetic contact (with its anti-tampering).

The detector provides the anti-masking feature (that can be disabled).

It is supervised by the central unit at programmable intervals (every 15 minutes by default); it can be programmed in real time or delayed mode (with a programmable delay from 0 to 90 seconds that can be different for input and output). It is possible to configure these parameters during the system commissioning.

Spare lithium battery (Order code: 2CSY255331R0802).

Description	Mod. width	Order details		Price 1 piece	Weight 1 piece	Pack unit
		Type code	Order code		kg	pc.
white	–	SMD-W2.1A	2CSY235871R0103		0.22	1
brown	–	SMD-W2.1D	2CSY200091R0103		0.22	1

Intrusion Alarm Systems

ABB-secure@home – Motion Detectors



SMD-W4.1A

Motion Detectors – Outdoor

Perimeter Bidirectional Dual Passive IR Motion Detector

The perimeter bidirectional dual passive IR motion detector allows the external control of the building's perimeter, ideal for the protection of doors and windows. It has to be installed on a wall.

Inside the machine there are four infrared detectors, two per side; both sensors on one side, coupled, can be adjusted horizontally at 0° or 3°. In the vertical direction, for each side, the upper sensor is fixed, while the lower one is adjustable to 4 positions (with detection distance of 2, 5, 8 and 12 m).

The alarm is triggered only if both sensors, even on just one side, detect a presence; this operation mode makes the device particularly suitable to avoid false signals due to the presence of pets. This device communicates bidirectionally with the central unit, that supervises it at programmable intervals (every 15 minutes by default); it can be programmed in real time or delayed mode (with a programmable delay from 0 to 90 seconds that can be different for input and output). It is possible to configure these parameters during the system commissioning.

Spare lithium battery (Order code: 2CSY255331R0802).

Description	Mod. width	Order details		Price 1 piece	Weight 1 piece	Pack unit
		Type code	Order code		kg	pc.
white	–	SMD-W4.1A	2CSY254971R0202		0.57	1



SMD-W5.1A

Compact Dual Passive IR Perimeter Motion Detector

This compact-size device allows to control the building's external perimeter and it is particularly suitable for the protection of doors and windows. It has to be installed on the wall.

The curtain-type detection area (5° detection angle) has an adjustable length from 2 to 5 meters.

The device is internally fitted with two infrared detectors, one of which is adjustable.

The alarm is triggered only if both sensors detect a presence; this operation mode makes the device particularly suitable to avoid false signals due to the presence of pets.

The detector provides also an anti-masking function.

It communicates bidirectionally with the central unit that supervises it at programmable intervals (every 15 minutes by default); it can be programmed in real time or delayed mode (with a programmable delay from 0 to 90 seconds, that can be different for input and output).

It is possible to configure these parameters during the system commissioning.

Spare lithium battery (Order code: 2CSY255331R0802).

Description	Mod. width	Order details		Price 1 piece	Weight 1 piece	Pack unit
		Type code	Order code		kg	pc.
white	–	SMD-W5.1A	2CSY254981R0203		0.32	1

Intrusion Alarm Systems

ABB-secure@home – Motion Detectors



SMD-W3.1A

Outdoor Dual Passive IR Motion Detector

The outdoor dual passive IR motion detector is suitable to control the building's external areas. It has to be installed on wall or pole.

The device integrates two infrared detectors: the upper one is fixed, the lower one is vertically adjustable in 5 positions (with 2, 3, 6, 8 and 12 m average coverage area). The alarm is triggered only if both sensors detect a presence; this operation mode makes the device particularly suitable to avoid false signals due to the presence of pets.

The horizontal detection area is 90°. It can be rotated according to six possible angle positions. The detector provides an anti-masking function (that can be disabled).

This device communicates bidirectionally with the central unit that supervises it at programmable intervals (every 15 minutes by default); it can be programmed in real time or delayed mode (with a programmable delay from 0 to 90 seconds that can be different for input and output). It is possible to configure these parameters during the system commissioning.

Spare lithium battery (Order code: 2CSY255331R0802).

Description	Mod. width	Order details		Price 1 piece	Weight 1 piece	Pack unit
		Type code	Order code		kg	pc.
white	–	SMD-W3.1A	2CSY255211R0201		0.55	1



SMD-W6.1A

Outdoor Dual Passive IR Motion Detector for Height

This device, specific to be installed on the wall at a height of 2.5 - 3 m, allows to control building's external areas. Through the two IR detectors, the device indicates the presence of intruders avoiding false alarm alerts.

The detector provides an anti-masking function (that can be disabled).

This device communicates bidirectionally with the central unit that supervises it at programmable intervals (every 15 minutes by default); it can be programmed in real time or delayed mode (with a programmable delay from 0 to 90 seconds that can be different for input and output).

It is possible to configure these parameters during the system commissioning.

Spare lithium battery (Order code: 2CSY255331R0802).

Description	Mod. width	Order details		Price 1 piece	Weight 1 piece	Pack unit
		Type code	Order code		kg	pc.
white	–	SMD-W6.1A	2CSY255311R0204		0.55	1

Intrusion Alarm Systems

ABB-secure@home – Magnetic Contacts



SMC-W1.1D
SMC-W1.1A

Magnetic Contacts

Perimeter Magnet Reed Contact Detector

The perimeter magnet reed contact detector controls doors, windows and detects their opening or closing through the internal reed contact and the external magnet. This device communicates bidirectionally with the central unit that supervises it at programmable intervals (every 15 minutes by default); it can be programmed in real time or delayed mode (with a programmable delay from 0 to 90 seconds that can be different for input and output). It is possible to configure these parameters during the system commissioning. Spare lithium battery (Order code: 2CSY255331R0802).

Description	Mod. width	Order details		Price 1 piece	Weight 1 piece	Pack unit
		Type code	Order code		kg	pc.
white	–	SMC-W1.1A	2CSY255791R0104		0.165	1
brown	–	SMC-W1.1D	2CSY255731R0104		0.165	1

Magnetic Contacts – Accessories



SMC-W3.1A

Magnet Reed Contact for Surface/Flush Mounting

The device signals the opening of windows or doors. As flush mounting device, it can be installed in 8 millimetres round holes; to be installed as surface mounting, it needs the provided adapter.

It must be necessarily connected to a perimeter magnet reed contact detector (SMC-W1.1x) or to a dual passive IR perimeter motion detector (SMD-W2.1x); for this purpose it is equipped with a 1.2 meter connection cable.

Description	Mod. width	Order details		Price 1 piece	Weight 1 piece	Pack unit
		Type code	Order code		kg	pc.
white	–	SMC-W3.1A	2CSY295241R0606		0.12	1
brown	–	SMC-W3.1D	2CSY295201R0606		0.12	1



SMC-W2.1

Rolling Door Magnet Reed Contact

The device signals the opening of overhead or rolling doors. It must be necessarily connected to a perimeter magnet reed contact detector (SMC-W1.1x) or to a dual passive IR perimeter motion detector (SMD-W2.1x); for this purpose it is equipped with a 1.2 meter connection cable.

It is made of aluminum with high resistance to the transit of heavy vehicles. The minimum fixing distance is 20 millimeters from ferrous materials and 25 mm from non-ferrous materials.

Description	Mod. width	Order details		Price 1 piece	Weight 1 piece	Pack unit
		Type code	Order code		kg	pc.
	–	SMC-W2.1	2CSY255341R0602		0.12	1

Intrusion Alarm Systems

ABB-secure@home – Magnetic Contacts



SLM-W1.1

Roller Shutter Sensor

The device detects the lifting of shutters through the movement of the retractable rope.

It is made of thermoplastic material; the rope is 3.5 m long.

It must be necessarily connected to a perimeter magnet reed contact detector (SMC-W1.1x).

Description	Mod. width	Order details		Price 1 piece	Weight 1 piece	Pack unit
		Type code	Order code		kg	pc.
white	–	SLM-W1.1	2CSY255001R0603		0.28	1



SGB-W1.1A

Shock Inertial Sensor

This device detects a possible shock occurred on a door, window or the surface on which it is installed. Equipped with a 2-meter connection cable, it must be necessarily connected to a perimeter magnet reed contact detector (SMC-W1.1x). Assembly: projecting on door/window/generic surfaces using screws or double-sided adhesive tape.

Description	Mod. width	Order details		Price 1 piece	Weight 1 piece	Pack unit
		Type code	Order code		kg	pc.
white	–	SGB-W1.1A	2CSY255871R0604		0.07	1

Intrusion Alarm Systems

ABB-secure@home – Technical Detectors



STD-W1.1

Secure@home Wireless Interface Module for Busch-Smoke Alarm

The module is required for interfacing the smoke detectors (article no. 6800-0-2721) or heat detectors (article no. 6800-0-2723) to the central unit.

The module is equipped with an integrated lithium battery – minimum battery life: 10 years. The device features a bidirectional communication with the central unit that supervises it with a programmable supervision interval (typically every 15 minutes). It is possible to configure this parameter during the system commissioning.

Description	Mod. width	Order details		Price 1 piece	Weight 1 piece	Pack unit
		Type code	Order code		kg	pc.
white	–	STD-W1.1	2CSY254961R0701		0.02	1



STD-W5.1A

Water Detector

It detects the presence of water. The minimum detectable level of the liquid is 1 millimeter, but it can be adjusted to higher levels.

It is equipped with an anti-tamper (breakage or removal), self-diagnostics and control of battery charge device.

The detector is composed by the interface module and the flood detection probe. It features a bidirectional communication with the central unit that supervises it with a programmable supervision interval (typically every 15 minutes). It is possible to configure this parameter during the system commissioning.

Spare lithium battery (Order code: 2CSY255331R0802).

Description	Mod. width	Order details		Price 1 piece	Weight 1 piece	Pack unit
		Type code	Order code		kg	pc.
white	–	STD-W5.1A	2CSY255191R0705		0.15	1

Intrusion Alarm Systems

ABB-secure@home – Arming Devices

Arming Devices



SAD-W1.1F



SAD-W3.1F



SAD-W2.1F



SAD-W4.1F

Preconfigured Remote Control

The remote control is a mobile system device used to manage the anti-intrusion system in the simplest way. It has 5 with symbolic identification. One key is freely configurable and the other 4 keys are pre-configured with the following functions: Away mode, Home mode, Disarm and Panic Alarm. One is a service LED that gives information about the battery level and the communication status with the central unit; the other four LEDs are used as a feedback regarding the arming (red LED on) or disarming (green LED on) status of the different system zones. All LEDs flash yellow for 2 seconds if there is something preventing the correct arming/disarming of the system (e.g. an open window). All the keys are equipped with LEDs. Spare lithium button battery, 3V (CR2032) are normally available on the market.

Description	Mod. width	Order details		Price 1 piece	Weight 1 piece	Pack unit
		Type code	Order code		kg	pc.
Square, glass black	–	SAD-W1.1F	2CSY202821R0305		0.07	1
Round, black	–	SAD-W3.1F	2CSY295161R1058		0.07	1

Remote Control

The remote control is a mobile system device used to manage the anti-intrusion system in the simplest way. It has 5 fully configurable keys with numerical identification; each of them can be confiured to arm/disarm the anti-intrusion zones, but also to trigger secial functions such as anti-theft alarm, panic alarm, first aid alarm. All the keys are equipped with fully configurable LEDs. Spare lithium button battery, 3V (CR2032) normally available on the market.

Description	Mod. width	Order details		Price 1 piece	Weight 1 piece	Pack unit
		Type code	Order code		kg	pc.
Square, glass black	–	SAD-W2.1F	2CSY251641R0306		0.07	1
Round, black	–	SAD-W4.1F	2CSY277102R0301		0.07	1

Intrusion Alarm Systems

ABB-secure@home – Signalling Devices/Batteries and Installation Material

Signalling Devices



SSD-W1.1A
SSD-W1.1B
SSD-W1.1C
SSD-W2.1C

Outdoor Siren

The outdoor siren is a two-way self-powered device capable of emitting acoustic and light alarms. It is installed outdoor on a wall and is equipped with anti-opening, anti-removal, anti-perforation, anti-shock protection, as well as an anti-foaming patented system.

Alarm sound type, duration, sound levels and LEDs, etc. can be configured and personalized while commissioning the system.

Spare battery pack (Order code: 2CSY254991R0803).

Description	Mod. width	Order details		Price 1 piece	Weight 1 piece	Pack unit
		Type code	Order code		kg	pc.
Square, white	–	SSD-W1.1A	2CSY277631R0502		2.17	1
Square, anthracite	–	SSD-W1.1B	2CSY229751R0502		2.17	1
Square, silver	–	SSD-W1.1C	2CSY296961R0502		2.17	1
Round, silver	–	SSD-W2.1C	2CSY258212R0501		2.17	1

Batteries and Installation Material



SBA-W1.1

Rechargeable Battery Pack, Ni-Mh, 6 V, 1.6 Ah

This is the central units' dedicated battery pack. It is rechargeable, therefore it normally must not be replaced. Buy a spare battery only if its duration is significantly decreased, which could mean that the battery has reached its end-of-life.

Description	Mod. width	Order details		Price 1 piece	Weight 1 piece	Pack unit
		Type code	Order code		kg	pc.
	–	SBA-W1.1	2CSY255111R0801		0.02	1



SBA-W2.1

Lithium Battery, 3 V, 1.4 Ah

This lithium batteries are the ones used by all the ABB-secure@home safety and security sensors.

Description	Mod. width	Order details		Price 1 piece	Weight 1 piece	Pack unit
		Type code	Order code		kg	pc.
	–	SBA-W2.1	2CSY255331R0802		0.01	1



SBA-W3.1

Battery Pack, LR20, 7.5 V, 12 Ah

This is the outdoor sirens's dedicated battery pack.

Description	Mod. width	Order details		Price 1 piece	Weight 1 piece	Pack unit
		Type code	Order code		kg	pc.
	–	SBA-W3.1	2CSY254991R0803		0.40	1

Intrusion Alarm Systems

ABB-secure@home – Signalling Devices/Batteries and Installation Material



SIM-W1.1

Wireless Repeater

This device repeats the signal between sensors, sirens and central units, extending the range to the radio frequency transmissions.

The repeater features a bidirectional communication with the central unit that supervises it with a programmable supervision interval (typically every 15 minutes).It is possible to configure these parameters during the system commissioning.

Up to 4 repeaters can be configured for each central unit; each repeater has a list of devices to be managed: the update of the devices list for a repeater is done directly through specific functions of the central unit.

The device can be powered by a plug-in 220 V power supply; in this case the battery has a backup function in the event of a mains power failure.

It is equipped with an anti-tamper (breakage or removal), self-diagnostics and control of battery charge device.

Description	Mod. width	Order details		Price 1 piece	Weight 1 piece	Pack unit
		Type code	Order code		kg	pc.
	–	SIM-W1.1	2CSY255201R0601		0.47	1

Intrusion Alarm Systems

ABB Alarm System – GM/A – Alarm Panels/System Components



GM/A 8.1

Alarm Panels

KNX Security Panel, SM

for the protection of small to medium residential or commercial properties against intrusion and technical faults. The Security Panel is suitable for up to five logical areas. It has 8 integrated zones for detectors, a Security Bus for Bus-detectors, Bus-Zone Modules and Setting devices, Ethernet connection (RJ45) for programming, operating and displaying system status via Web-Browser and an integrated KNX interface. The Security Panel GM/A 8.1 complies with the requirements to VdS classes A, B and C, to the European Standard EN 50131, Grade 1 to 3 and to ISO/IEC 62642 Grade 1 to 3.

Description	Mod. width	Order details		Price 1 piece	Weight 1 piece	Pack unit
		Type code	Order code		kg	pc.
	–	GM/A 8.1	2CDG110150R0011		10.5	1
Off the wall tamper contact for GM/A	–	WA/Z 1.1	2CDG110174R0011		0.2	1

System Components

Keypad for GM/A 8.1

Used to operate and display the information of the system states of the GM/A 8.1 KNX Security Panel. System messages are displayed on a four-line LCD display. The multifunction and special keys mean that all the system functions can be operated easily. Safety-relevant functions are protected by a user PIN. Five Keypads can be connected to each Security Panel. There is no need for an external voltage supply, the keypads are supplied via the Keypad-Bus. The device can be used in systems with increased system requirements according to VdS Class A, B and C, DIN VDE 0833 Grade 1, 2 and 3 and EN 50131/IEC 62642 Grade 1, 2 and 3.



BT/A 1.1



BT/A 2.1

Description	Mod. width	Order details		Price 1 piece	Weight 1 piece	Pack unit
		Type code	Order code		kg	pc.
Black	–	BT/A 1.1	2CDG280001R0011		0.5	1
White	–	BT/A 2.1	2CDG280002R0011		0.5	1

Intrusion Alarm Systems

ABB Alarm System – GM/A – Alarm Panels/System Components



MG/A 4.4.1

Zone Module, 4-fold

to connect to Security Panel GM/A 8.1 via the Security-Bus. For expansion of the Security-Panel by 4 detector zones. Used for connection to the exterior perimeter detectors such as magnetic reed contacts and passive glass break sensors. The module has 4 zones to which several detectors can be connected. The status of each zone is displayed with a status LED. The Zone Module delivers the control signals and the supply voltage for the external detectors. There is no need for an external voltage supply, the Zone Modules are supplied via the Security-Bus.

Description	Mod. width	Order details		Price 1 piece	Weight 1 piece	Pack unit
		Type code	Order code		kg	pc.
to mount in the Security Panel housing	–	MG/E 4.4.1	2CDG110178R0011		0.1	1
in a surface mounting housing for installation in the building	–	MG/A 4.4.1	2CDG110186R0011		0.1	1

Intrusion Alarm Systems

ABB Alarm System – GM/A – Motion Detectors

Motion Detectors



IR/XB

Passive IR Bus Motion Detector, 15 m

For direct connection to the security-bus of the Intrusion Alarm Panel GM/A 8.1. The motion detector with passive infrared technology is VdS class B / EN Grade 2 certified. It facilitates monitoring of an area with an infrared range of up to 15 m.

Description	Mod. width	Order details		Price 1 piece	Weight 1 piece	Pack unit
		Type code	Order code		kg	pc.
VdS B/EN Grade 2	–	IR/XB	2CDG230023R0011		0.15	1



EIM/XB

Dualtech Bus Motion Detector, 15 m

For direct connection to the security-bus of the Intrusion Alarm Panel GM/A 8.1. The Dual-Motion Detector combines proven passive infrared technology with temperature-independent microwave technology. The combination of both functional principles results in a detector featuring high immunity to false alarms, even with unfavourable ambient conditions, and which still has high detection security. The detector is VdS class B / EN Grade 2 certified. It facilitates monitoring of an area with an infrared range of up to 15 m. For use in EU countries only.

Description	Mod. width	Order details		Price 1 piece	Weight 1 piece	Pack unit
		Type code	Order code		kg	pc.
VdS B/EN Grade 2	–	EIM/XB	2CDG230025R0011		0.15	1

Intrusion Alarm Systems

ABB Alarm System – GM/A – Arming Systems

Arming Systems



L240/BS

SafeKey Evaluation Module

For connection of the SafeKey components as well as all components required for a setting door (magnetic contacts, lock bolt switching contact, bolt lock, internal siren). For direct connection to the security-bus of the Intrusion Alarm Panel GM/A 8.1. The management of the electronic keys from the SafeKey range is undertaken completely via the WebUI of the Security Panel GM/A 8.1.

Description	Mod. width	Order details		Price 1 piece	Weight 1 piece	Pack unit
		Type code	Order code		kg	pc.
	–	L240/BS	GHQ3050031R0001		0.13	1



WEL/A, ES

SafeKey Wall Reader, SM

For setting/unsetting with the Evaluation Module L240/BS. The unit is actuated by inserting the electronic SafeKey chipkey. The SafeKey Wall Reader WEL is equipped with the key reader and an acknowledgement buzzer. VdS class C.

Description	Mod. width	Order details		Price 1 piece	Weight 1 piece	Pack unit
		Type code	Order code		kg	pc.
stainless steel	–	WEL/A, ES	GHQ3050023R0001		0.38	1



WELT/A, ES

SafeKey Wall Reader with Keypad, SM

For setting/unsetting with the Evaluation Module L240/BS. The unit is actuated by inserting the electronic SafeKey chipkey and/or code. The SafeKey Wall Reader WELT is equipped with the key reader, keypad and an acknowledgement buzzer. VdS class C.

Description	Mod. width	Order details		Price 1 piece	Weight 1 piece	Pack unit
		Type code	Order code		kg	pc.
stainless steel	–	WELT/A, ES	GHQ3050024R0001		0.45	1



SCS

SafeKey Chipkey

It is an electronic carrier medium for setting / unsetting via a SafeKey Wall Reader. A SafeKey Chipkey can be authorized for any number of different SafeKey systems with different levels of authorization.

Description	Mod. width	Order details		Price 1 piece	Weight 1 piece	Pack unit
		Type code	Order code		kg	pc.
	–	SCS	GHQ3050027R0001		0.02	1

Intrusion Alarm Systems

ABB Alarm System – GM/A – Signalling Devices/Installation Material

Signalling Devices



SSS

Indoor Siren, 12 V DC

Electronic solid-state siren with intermittent tone for alarm purposes in indoor installations. External dimensions: \varnothing x H = 90 x 37 mm.

Description	Mod. width	Order details		Price 1 piece	Weight 1 piece	Pack unit
		Type code	Order code		kg	pc.
	–	SSS	GHV9270001V0001		0.17	1



SSF/G

Siren in Enclosure

An aluminium protective housing with additional protective enamel coating. Protected against sabotage by a case tamper contact. The alarm inputs are wired onto a terminal strip. With fixing screw (M4) for potential equalization on the base.

Dimensions: H x W x D = 200 x 205 x 88 mm; Color: RAL 9002 Environmental class III to VdS.

Description	Mod. width	Order details		Price 1 piece	Weight 1 piece	Pack unit
		Type code	Order code		kg	pc.
	–	SSF/G	GHQ3050017R0001		1.64	1



SSF/GB

Siren with Strobe

An aluminium protective housing with additional protective enamel coating. Protected against sabotage by a case tamper contact. The alarm inputs are wired onto a terminal strip. With fixing screw (M4) for potential equalization on the base.

Dimensions: H x W x D = 258 x 205 x 88 mm; Color: RAL 9002 Environmental class III to VdS.

Description	Mod. width	Order details		Price 1 piece	Weight 1 piece	Pack unit
		Type code	Order code		kg	pc.
	–	SSF/GB	GHQ3050018R0001		1.81	1

Installation Material



SAD/GAP

Distribution Enclosure, SM

For installation of the Bus Module L240/BS.

Description	Mod. width	Order details		Price 1 piece	Weight 1 piece	Pack unit
		Type code	Order code		kg	pc.
Surface mounting, white	–	SAD/GAP	2CDG220021R0011		0.131	1

Intrusion Alarm Systems

ABB Alarm System – GM/A – Batteries



SAK17

Sealed Lead Acid Battery, 12 V DC

Sealed lead acid battery for power backup up of alarm systems. Maintenance free.

Description	Mod. width	Order details		Price	Weight	Pack
		Type code	Order code	1 piece	1 piece	unit
18 Ah	–	SAK17	GHV9240001V0013		kg	pc.
					7.15	1

Intrusion Alarm Systems

Conventional Intrusion Alarm Components – Motion Detectors

Motion detectors directly evaluate movements within closed rooms. The change to specific physical variables is evaluated and signaled as an attempted intrusion. The passive infrared detector is used for normal environmental influences.

For critical environmental influences a combination of passive infrared and microwave, so called dual technologie, is used.

Compatible systems: Alarm System – GM/A and KNX.



EIM/D

Dual Ceiling Detector, EN Grade 2, 10 m

Operates according to the proven detection principle of infra-red technology and microwave over 360°. The range of the infrared component can be adapted via the mounting height while the range of the microwave can be adjusted separately using a jumper. The detector is fitted with a walk test LED. Colour: RAL 9010 pure white. For use in EU countries only.

Description	Mod. width	Order details		Price 1 piece	Weight 1 piece	Pack unit
		Type code	Order code		kg	pc.
	–	EIM/D	2CDG230039R0011		0.14	1

Intrusion Alarm Systems

Conventional Intrusion Alarm Components – Magnetic Contacts

Magnetic contacts monitor windows, doors, hatches or other access points for their open or closed state. The state is evaluated by the alarm system to trigger an intrusion alarm. Compatible systems: Alarm System – GM/A, ABB-secure@home, KNX.



MRS/W

Magnet Reed Contact Set

For opening surveillance of windows and doors, complete for bolting or drilling. Contents: 1 magnet, 1 reed contact with 4.0 m connection cable LIYY 4 x 0.14 mm², 2 housings, 2 spacer plates, 2 flanges and 4 anti-magnetic fixing screws. VdS class B.

Description	Mod. width	Order details		Price 1 piece	Weight 1 piece	Pack unit
		Type code	Order code		kg	pc.
white	–	MRS/W	GHQ3201972R0001		0.1	1
brown	–	MRS/B	GHQ3201972R0002		0.1	1
Saver Set (20 pcs.), white	–	VMRS/W	GHQ3201972R0011		1.99	1
Saver Set (20 pcs.), brown	–	VMRS/B	GHQ3201972R0012		1.99	1



SMC-W3.1A

Magnet Reed Contact for Surface/Flush Mounting

The device signals the opening of windows or doors. As flush mounting device, it can be installed in 8 millimetres round holes; to be installed as surface mounting, it needs the provided adapter.

It must be necessarily connected to a perimeter magnet reed contact detector (SMC-W1.1x) or to a dual passive IR perimeter motion detector (SMD-W2.1x); for this purpose it is equipped with a 1.2 meter connection cable.

Description	Mod. width	Order details		Price 1 piece	Weight 1 piece	Pack unit
		Type code	Order code		kg	pc.
white	–	SMC-W3.1A	2CSY295241R0606		0.12	1
brown	–	SMC-W3.1D	2CSY295201R0606		0.12	1



SMC-W2.1

Rolling Door Magnet Reed Contact

The device signals the opening of overhead or rolling doors. It must be necessarily connected to a perimeter magnet reed contact detector (SMC-W1.1x) or to a dual passive IR perimeter motion detector (SMD-W2.1x); for this purpose it is equipped with a 1.2 meter connection cable.

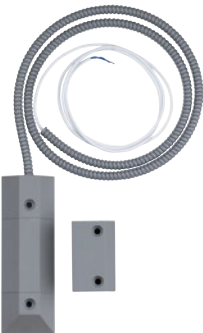
It is made of aluminum with high resistance to the transit of heavy vehicles.

The minimum fixing distance is 20 millimeters from ferrous materials and 25 mm from non-ferrous materials.

Description	Mod. width	Order details		Price 1 piece	Weight 1 piece	Pack unit
		Type code	Order code		kg	pc.
	–	SMC-W2.1	2CSY255341R0602		0.12	1

Intrusion Alarm Systems

Conventional Intrusion Alarm Components – Magnetic Contacts



MC-C 1.1

Rolling Door Reed Contact

NEW

The Rolling Door Reed Contact Set is mounted mainly on rolling, sliding, and tilting doors. The contact housing is mounted on the ground (a flat support surface is required). Only screws made of anti-magnetic material may be used for mounting. Due to the weatherproof and mechanically stable design of the contact housing, the circuit is mostly protected against damage when rubber-tired vehicles drive over it. The 4-wire cable is protected by a plastic-coated metal hose.

Description	Mod. width	Order details		Price 1 piece	Weight 1 piece	Pack unit
		Type code	Order code		kg	pc.
VdS Class B, EN Grade 2	–	MC-C1.1	2CDG250006R0011		0.3	1

Intrusion Alarm Systems

Conventional Intrusion Alarm Components – Glass Break Detectors

Glass break detectors evaluate glass breakage of glass surfaces from windows or doors. Compatible systems: Alarm System – GM/A, ABB-secure@home, KNX.



SPGS/W

Passive Glass Break Detector

Passive Glass Break Detector evaluates typical glass-breakage noises. VdS class B.

Description	Mod. width	Order details		Price 1 piece	Weight 1 piece	Pack unit
		Type code	Order code		kg	pc.
white	–	SPGS/W	GHV9220004V0009		0.11	1



AGM

Acoustic Glass Break Detector, SM

Acoustic Glass Break Detector evaluates typical glass-breakage noises. Built in microphone.

Description	Mod. width	Order details		Price 1 piece	Weight 1 piece	Pack unit
		Type code	Order code		kg	pc.
	–	AGM	GHV9210030V0010		0.09	1



SGB-W1.1A

Shock Inertial Sensor

This device detects a possible shock occurred on a door, window or the surface on which it is installed. Equipped with a 2-meter connection cable, it must be necessarily connected to a perimeter magnet reed contact detector (SMC-W1.1x). Assembly: projecting on door/window/generic surfaces using screws or double-sided adhesive tape.

Description	Mod. width	Order details		Price 1 piece	Weight 1 piece	Pack unit
		Type code	Order code		kg	pc.
white	–	SGB-W1.1A	2CSY255871R0604		0.07	1

Intrusion Alarm Systems

Conventional Intrusion Alarm Components – Glass Break Detectors



LKS

Loctite Adhesive for Glass Break Detector

Loctite Adhesive for mounting Glass Break Detectors SPGS.

Description	Mod. width	Order details		Price 1 piece	Weight 1 piece	Pack unit
		Type code	Order code		kg	pc.
	–	LKS	GHQ4001906R0001		0.06	1



GP2

Mechanical Tester for SPGS

Mechanical tester for SPGS.

Description	Mod. width	Order details		Price 1 piece	Weight 1 piece	Pack unit
		Type code	Order code		kg	pc.
	–	GP2	GHV9220004V0004		0.1	1

Intrusion Alarm Systems

Conventional Intrusion Alarm Components – Lock Monitoring

The lock monitoring of windows, doors, hatches or other access points for their unlocked or locked state ensures that every access point is locked before the building is left. Also it helps to reduce false alarms in the building. Compatible systems: Alarm System – GM/A, ABB-secure@home, KNX.



WRK/W

Lock Bolt Switching Contact with Connection Cable

For installation in the strike plate, for lock monitoring on doors. Water-tight IP 67, with 2.5 m connection cable LIYY 3 x 0.14 mm². VdS class C.

Description	Mod. width	Order details		Price 1 piece	Weight 1 piece	Pack unit
		Type code	Order code		kg	pc.
	–	WRK/W	2CDG250003R0011		0.03	1



VSUE

Window Lock Monitoring Contact

Lock monitoring is carried out with a special magnet and a reed contact. The magnet is mounted on the push rod of the window sash while the reed contact is mounted on the frame. The connection cable LIYY 4 x 0.14 mm² is 4 m in length. VdS class C.

Description	Mod. width	Order details		Price 1 piece	Weight 1 piece	Pack unit
		Type code	Order code		kg	pc.
	–	VSUE	GHV9210018V0022		0.09	1



SLM-W1.1

Roller Shutter Sensor

The device detects the lifting of shutters through the movement of the retractable rope. It is made of thermoplastic material; the rope is 3.5 m long. It must be necessarily connected to a perimeter magnet reed contact detector (SMC-W1.1x).

Description	Mod. width	Order details		Price 1 piece	Weight 1 piece	Pack unit
		Type code	Order code		kg	pc.
white	–	SLM-W1.1	2CSY255001R0603		0.07	1

Intrusion Alarm Systems

Conventional Intrusion Alarm Components – Panic Buttons

Panic buttons are push buttons which can be pressed by a person in danger. The actuation of a panic button immediately leads to an alarm. In case of a hold-up alarm the panic button can be used to trigger a remote alarm only. Compatible systems: Alarm System – GM/A, KNX.



ND/W

Emergency Call Button, white

For manual alarm tripping. Complies with the police regulations since it features permanent trip recognition, momentary-contact function, with cover contact. Surface mount version. Colour: white. VdS class C.

Description	Mod. width	Order details		Price 1 piece	Weight 1 piece	Pack unit
		Type code	Order code		kg	pc.
Surface mounting	–	ND/W	GHQ7132443R0011		0.15	1
Flush mounting	–	NDU/W	GHQ7132443R0021		0.15	1



NDA/W

Cover Plate for Emergency Call Button

Used primarily in the banking sector or other institutions, where unintentional alarm triggering is possible due to public access.

Description	Mod. width	Order details		Price 1 piece	Weight 1 piece	Pack unit
		Type code	Order code		kg	pc.
white	–	NDA/W	GHQ7132443R0004		0.03	1

Intrusion Alarm Systems

Conventional Intrusion Alarm Components – Technical Detectors

No matter whether they are smoke, gas or water leakage, the right detector will recognize it.



TD-C 1.1

Gas Detector with Relay Contact **NEW**
The Gas Detector is used for monitoring gas leakage of domestic and commercial rooms. It detects gases like propane, methane and butane as well als acetylene, city gas and natural gas. The detector can be connected to ABB intrusion and fire alarm control panels, as well as ABB i-bus® binary inputs via a potential-free relay contact. Suitable as a stand-alone device. An external power supply with 12-24 V DC is required.

Description	Mod. width	Order details		Price 1 piece	Weight 1 piece	Pack unit
		Type code	Order code		kg	pc.
	–	TD-C 1.1	2CDG220023R0011		0.167	1



SWM 4

Water Detector for Detector Groups
A resin-encapsulated water detector with gold-plated Termipoint pins, detects water ingress, e.g., pipe fractures, ingress of groundwater and sewage, water damage caused by washing machines and dishwashers etc. before the damage becomes too expensive. For operation directly on detector circuits of intrusion alarm panels or security terminals.

Description	Mod. width	Order details		Price 1 piece	Weight 1 piece	Pack unit
		Type code	Order code		kg	pc.
	–	SWM 4	GHQ4030001R0004		0.16	1



SWM 4/RN

Water Detector with Relay, 12 V
Features a potential free changeover contact output, an LED parallel output and a LED display. The detector resets itself automatically when the affected area dries out. The device draws its power from an external 10 ... 23 V DC voltage source.

Description	Mod. width	Order details		Price 1 piece	Weight 1 piece	Pack unit
		Type code	Order code		kg	pc.
	–	SWM4/RN	GHQ4030001R0012		0.23	1

Intrusion Alarm Systems

Conventional Intrusion Alarm Components – Technical Detectors



6833/01-84

Busch-Smoke Alarm® ProfessionalLine

For early detection of smouldering fires and open fires with smoke development indoors according to the photooptical measurement principle (Tyndall). With installed Lithium battery. Battery life min. 10 years. With test button and muting. Can be networked with up to 12 detectors using the radio module. Can be networked via 2-wire twisted pair cable with up to 12 detectors. Acoustic alarm: installed horn (85 dBA). Cyclic functional test. Including attachment material – VdS certified. Conform to EN 14604 studio white.

Description	Mod. width	Order details		Price 1 piece	Weight 1 piece	Pack unit
		Type code	Order code		kg	pc.
not networkable	–	6833-84	6800-0-2717			1
networkable	–	6833/01-84	6800-0-2718			1



6835/01-84

Busch-Heat Alarm ProfessionalLine

Signal triggered at over 57 °C. With installed Lithium battery. Battery life min. 10 years. With test button and muting. Can be networked via 2-wire twisted pair cable with up to 12 detectors. Can be networked with up to 12 detectors using the radio module. Acoustic alarm: installed horn (85 dBA). Cyclic functional test. Including attachment material – VdS certified. Conform to EN 14604.

Description	Mod. width	Order details		Price 1 piece	Weight 1 piece	Pack unit
		Type code	Order code		kg	pc.
studio white	–	6835/01-84	6800-0-2722			1



6827-84

Busch-Smoke Alarm® Radio Module

For wireless networking of multiple Busch smoke alarms® / heat alarms. With installed Lithium battery. Battery life min. 10 years. Radio frequency: 868 MHz. Range: max. 100 m outdoors, max. 30 m indoors.

Description	Mod. width	Order details		Price 1 piece	Weight 1 piece	Pack unit
		Type code	Order code		kg	pc.
	–	6828	6800-0-2514			1



6829-84

Busch-Smoke Alarm® Relay

For connecting external systems, e.g. KNX. Relay contact, floating changeover contact 230 V~ max. 5 A. Cable connection: up to 2 x 2 x 1.5 mm². With installed radio module. Rated voltage: 230 V~.

Description	Mod. width	Order details		Price 1 piece	Weight 1 piece	Pack unit
		Type code	Order code		kg	pc.
studio white	–	6829-84	6800-0-2515			1

Intrusion Alarm Systems

Conventional Intrusion Alarm Components – Technical Detectors



6824-84

Busch-Smoke Alarm® Remote Control

For service purposes. With muting, test and search function.

Description	Mod. width	Order details		Price	Weight	Pack
		Type code	Order code	1 piece	1 piece	unit
studio white	–	6824-84	6800-0-2516		kg	pc. 1

Intrusion Alarm Systems

Conventional Intrusion Alarm Components – Technical Detectors



FC650/O

Optical Smoke Detector

Optical smoke detector in threshold alarm technology that detects smoke according to the scattered-light principle. The detectors feature an alarm indicator on the detector head that is visible from all angles, and which can be triggered with a permanent magnet for test purposes. A detector base is provided for mounting and cable connection purposes into which the detector is simply screwed in via the bayonet connection. Each detector is equipped with an alarm LED, which displays the stored alarm in the event of an alarm. Detector/base diameter: 110 mm. VdS approved.

Description	Mod. width	Order details		Price 1 piece	Weight 1 piece	Pack unit
		Type code	Order code		kg	pc.
	–	FC650/O	2CDG430079R0011		0.09	1



FC650/TDIFF

Differential Maximum Heat Detector

The FC650/TDIFF is a thermal maximum and rate heat detector with an alarm temperature of 58 °C.

Description	Mod. width	Order details		Price 1 piece	Weight 1 piece	Pack unit
		Type code	Order code		kg	pc.
	–	FC650/TDIFF	2CDG430080R0011		0.09	1



FC650/TMAX

Thermal Maximum Detector

Static Heat Detector in threshold alarm technology, – trigger temperature 78 °C. The detectors feature an alarm indicator on the detector head that is visible from all angles, and which can be triggered with a permanent magnet for test purposes. A detector base is provided for mounting and cable connection purposes into which the detector is simply screwed-in via the bayonet connection. Each detector is equipped with an alarm LED, which displays the stored alarm in the event of an alarm. Detector/base diameter: 110 mm. VdS approved.

Description	Mod. width	Order details		Price 1 piece	Weight 1 piece	Pack unit
		Type code	Order code		kg	pc.
	–	FC650/TMAX	2CDG430081R0011		0.09	1



FC600/BREL

Relay Base, 12/24 V

Enables system-independent connection of the FC650 series fire detector to systems or devices that are not specifically designed for this detector technology. Examples include Intrusion Alarm Panels, KNX Security Terminals, elevator controls or other signal processing equipment. The detector base must be supplied by either a 12 V or a 24 V DC voltage supply. A floating 30 V DC/1 A changeover contacting is provided for transferring an alarm.

Description	Mod. width	Order details		Price 1 piece	Weight 1 piece	Pack unit
		Type code	Order code		kg	pc.
	–	FC600/BREL	2CDG430051R0011		0.08	1

Intrusion Alarm Systems

Conventional Intrusion Alarm Components – Arming Systems

Arming devices for alarm systems ensure a comfort and secure usage for activation or deactivation of the intrusion alarm functions. Compatible systems: Alarm System – GM/A, KNX.



Electrical Mini Bolt Lock

The ESPE/M Mini Bolt Lock is used together with an intrusion alarm system to implement the inevitability condition. The motorized bolt lock additionally locks the door to the set area, preventing unintentional opening of the door when the intrusion alarm system is set. The ESPE/M Mini Bolt Lock is connected to the L240/BS Evaluation module for GM/A 8.1 KNX Security Panel.

Description	Mod. width	Order details		Price 1 piece	Weight 1 piece	Pack unit
		Type code	Order code		kg	pc.
	–	ESPE/M	2CDG270010R0011		0.13	1

Intrusion Alarm Systems

Conventional Intrusion Alarm Components – Signalling Devices

Signalling devices are used for local alarming. A distinction is made between internal and external alarming. Internal alarming is used, i.e. when people are present in the monitored building. It is used solely to make people aware of a danger. External alarming is carried out using acoustic signaling devices (sirens) and visual signaling devices (strobe light). External alarming is used to contact the neighborhood or the general public. Compatible systems: Alarm System – GM/A, KNX.



SSS

Indoor Siren, 12 V DC

Electronic solid-state siren with intermittent tone for alarm purposes in indoor installations. External dimensions: \varnothing x H = 90 x 37 mm.

Description	Mod. width	Order details		Price 1 piece	Weight 1 piece	Pack unit
		Type code	Order code		kg	pc.
	–	SSS	GHV9270001V0001		0.17	1



SSF/G

Siren in Enclosure

An aluminium protective housing with additional protective enamel coating. Protected against sabotage by a case tamper contact. The alarm inputs are wired onto a terminal strip. With fixing screw (M4) for potential equalization on the base.

Dimensions: H x W x D = 200 x 205 x 88 mm; Color: RAL 9002 Environmental class III to VdS.

Description	Mod. width	Order details		Price 1 piece	Weight 1 piece	Pack unit
		Type code	Order code		kg	pc.
	–	SSF/G	GHQ3050017R0001		1.64	1



SSF/GB

Siren with Strobe

An aluminium protective housing with additional protective enamel coating. Protected against sabotage by a case tamper contact. The alarm inputs are wired onto a terminal strip. With fixing screw (M4) for potential equalization on the base.

Dimensions: H x W x D = 258 x 205 x 88 mm; Color: RAL 9002 Environmental class III to VdS.

Description	Mod. width	Order details		Price 1 piece	Weight 1 piece	Pack unit
		Type code	Order code		kg	pc.
	–	SSF/GB	GHQ3050018R0001		1.81	1

Intrusion Alarm Systems

Conventional Intrusion Alarm Components – Installation Material

Installation material (junction boxes, cable hoses) for alarm systems ensure a safe and clean installation of all components.



SAD/GAP

Distribution Box, SM

For installation of the Bus Module L240/BS.

Description	Mod. width	Order details		Price 1 piece	Weight 1 piece	Pack unit
		Type code	Order code		kg	pc.
Surface mounting, white	–	SAD/GAP	2CDG220021R0011		0.131	1



SAD...8...

Junction boxes

Junction boxes are used for the safe and clean connection of the different components in the installation. The boxes are available in different installation sizes and types.

Description	Mod. width	Order details		Price 1 piece	Weight 1 piece	Pack unit
		Type code	Order code		kg	pc.
white, SM	–	SADK/W	GHV9260005V0002		0.02	1
white, 8x2 pole, SM	–	SAD8L	GHQ3050004R0001		0.04	1
white, with Tamper Contact, 8x2 pole, SM	–	SADD8L	GHQ3050009R0001		0.05	1
white, with Tamper Contact, 28x2 pole, SM	–	SADD28L	GHQ3050016R0001		0.09	1
white, LSA, 8x2 pole, SM	–	SADD8S	GHQ3050012R0001		0.05	1
white, LSA, 15x2 pole, SM	–	SADD15S	GHQ3050006R0001		0.09	1
white, LSA, 30x2 pole, SM	–	SADD30S	GHQ3050014R0001		0.17	1
white, LSA, 8x2 pole, FM	–	UP8S	GHQ3050015R0001		0.06	1
white, 16x2 pole, FM	–	UP16L	GHQ3050007R0001		0.06	1



SKUES/M

Mini-Cable Hose, 7/5 mm

Cable hoses are needed to protect cables mounted on the moving part of a window or door. The cable hoses are available in different sizes.

Description	Mod. width	Order details		Price 1 piece	Weight 1 piece	Pack unit
		Type code	Order code		kg	pc.
50 cm, 9/7 mm	–	SKUES/M	GHV9260033V0011		0.07	1



IM-C1.1

Cable hose

NEW

Cable hoses are needed to protect cables mounted on the moving part of a window or door. The cable hoses are available in different sizes.

Description	Mod. width	Order details		Price 1 piece	Weight 1 piece	Pack unit
		Type code	Order code		kg	pc.
Cable hose	–	IM-C1.1	2CDG250007R0011		0.07	1
Cable hose, white	–	IM-C1.1A	2CDG250008R0011		0.09	1

Intrusion Alarm Systems

Conventional Intrusion Alarm Components – Batteries

Rechargeable batteries ensure back-up power for the alarm system in case the power supply fails. The entire alarm system remains fully operational, even for multiple hours.



SAK7

Sealed Lead Acid Batteries, 12 V DC

Sealed lead acid battery for power backup up of alarm systems. Maintenance free.

Description	Mod. width	Order details		Price	Weight	Pack
		Type code	Order code	1 piece	1 piece	unit
					kg	pc.
7.2 Ah	–	SAK7	GHV9240001V0011		2.98	1
18 Ah	–	SAK17	GHV9240001V0013		7.15	1