

Error Message Loading v2.15 or Later Firmware to AFE ACH580, ACS580, ACQ580 and ACS880 Drives

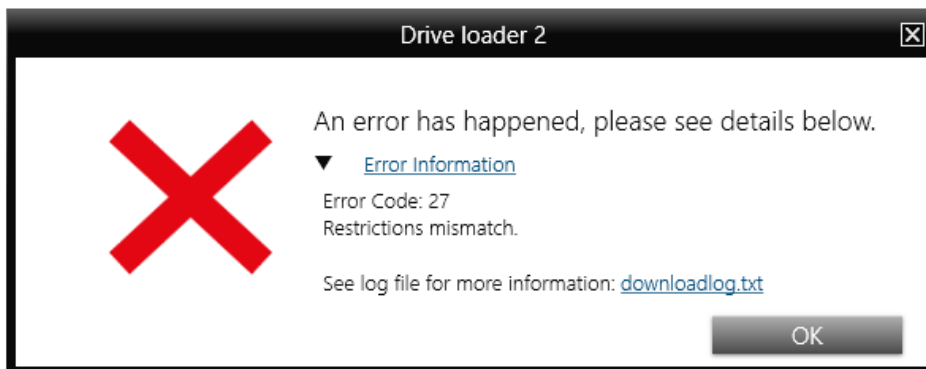
How to correct firmware loading errors

Some issues can come up when trying to load firmware versions that are at revision 2.15 or greater for ACH580, ACS580 and ACQ580 six-pulse drives. Not all methods for loading these revisions of firmware are possible.

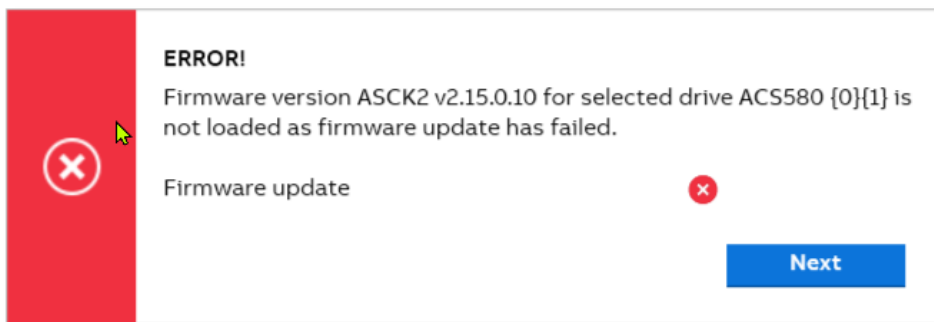
For Active Front End ACH580, ACS580 or ACQ580 Drives, loading 2.15 firmware or greater on either the line or the load-side of the drive can lead to errors, and even when loading line-side firmware for ACS880-11/31 drives.

If you try to load 2.15 or later versions of firmware via Drive loader 2.4 you will receive the following error.

(See the example shown below)



When you try to load 2.15 or later firmware versions with Drive Composer pro 2.6 you will also get the error seen in the below screenshot.



The solution is simple you need to use Drive Composer Pro 2.8 or later to be able to load firmware revisions that are 2.15 or later.

This is a link to download the latest version of Drive Composer:

[Download Drive Composer Pro](#)

You can find the Drive Composer User's Manual (3AUA0000094606) via the following link where you can reference instructions for downloading firmware in Chapter 13:

[Drive Composer User's Manual](#)