

GAS-INSULATED MEDIUM VOLTAGE SWITCHGEAR

# ZX Digital

## Simplicity meets flexibility



ABB’s digital solutions make our traditional and proven medium voltage gas-insulated switchgear even better. ZX Digital helps to increase safety, efficiency and flexibility during planning, commissioning and operation. The digital offering includes current and voltage sensors, IEC 61850 digital bus communication and smart solutions for automation and asset health management.

### Benefits of ABB’s digital solutions

#### Safe and reliable

- Touch-proof low-energy signals
- No more ferroresonance failures

#### Flexible and efficient

- Lower electrical losses
- Easy configuration on site

#### Safe and reliable

- Supervised communication and redundancy
- Touch-proof low-energy signal loops

#### Flexible and efficient

- Simplified wiring and automated documentation
- Easy changes via software tools

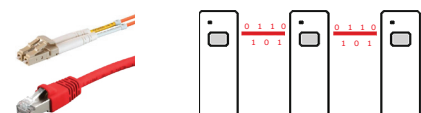
#### Current and voltage sensors

- Fully linear transformation and without saturation
- Easily configurable via software to fit any rating
- Ideal integration with modern ABB Relion relays
- Can be combined with traditional transformers



#### IEC 61850 Bus communication

- One bus - different signals and protocols:
- 8-1 “GOOSE” for binary signals like interlocks or position indications
- 9-2 “Sampled values” for analog signals like current and voltage measurements



—  
Fig. 1:  
ZX0.2 Digital,  
Example panel

—  
Fig. 2:  
ZX2 Digital,  
Example panel

With ZX Digital you avoid many of the practical challenges you face in today's complex applications, you simply have less to worry about in your electrical network.

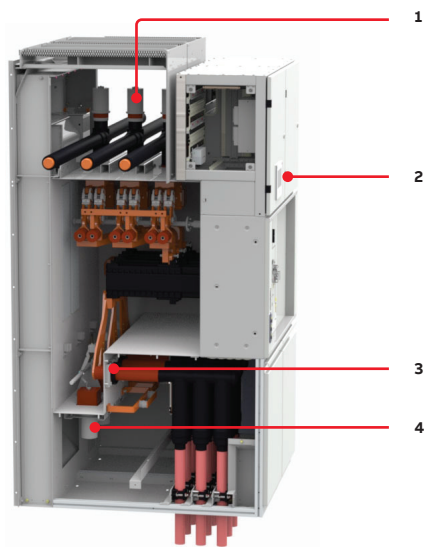
The ZX Digital concept can be applied to two product lines ZX0.2 and ZX2.

## ZX0.2 Digital

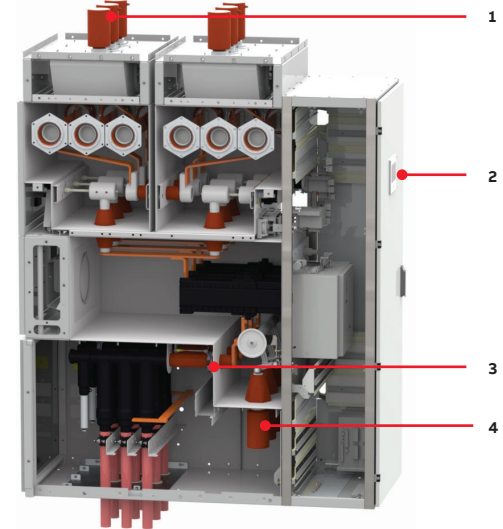
- Up to 36 kV, 2500 A, 31.5 kA
- Solid insulated busbar
- Designed for applications with little real estate and light industrial applications
- Front access enables space saving wall-mounted installation

## ZX2 Digital

- Up to 36 kV, 2500 A, 40 kA
- Gas-insulated busbar
- Flexible, modular design for all types of utility and industry applications
- Available in single and double bus design without the need for additional space compared to ZX2
- Innovative plug-in busbar connection enables safe, fast and easy installation
- Largest low voltage cabinet in the industry offers ample space to mount control, protection and metering devices



—  
Fig. 1



—  
Fig. 2

- 1 Voltage sensor for busbar voltage measurement
- 2 Protection relay supporting IEC 61850
- 3 Current sensor
- 4 Voltage sensor for cable voltage measurement