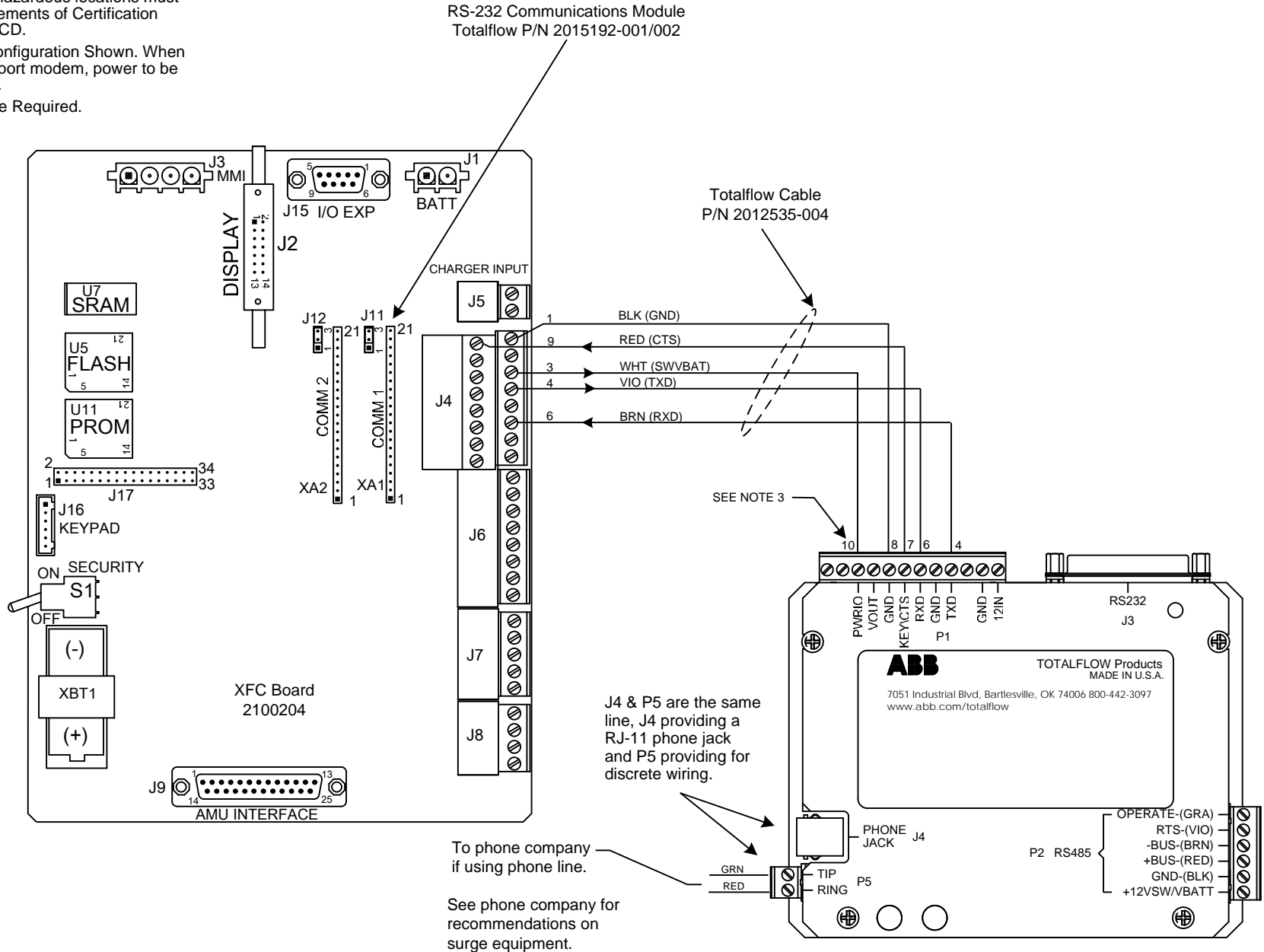


NOTES:

1. **WARNING**
Using a non-factory RS232 data cable between UC12 unit may result in damage and may void system warranty.
2. All installations in hazardous locations must comply with requirements of Certification Drawing 2015246-CD.
3. Dial-Up Modem Configuration Shown. When using dial-up dual port modem, power to be connected to P1-9.
4. Scheduler Software Required.



REF: 2017398-WI

ABB	TOTALFLOW Products	ACTION	DOC TYPE	TITLE	DWG NO.	REV	SHEET
		L16891	UD	XFC COMM 1 (2100204BD) TO UC12 W/ FCU SWITCHED PWR (RS-232)	2101934	AA	1 OF 1