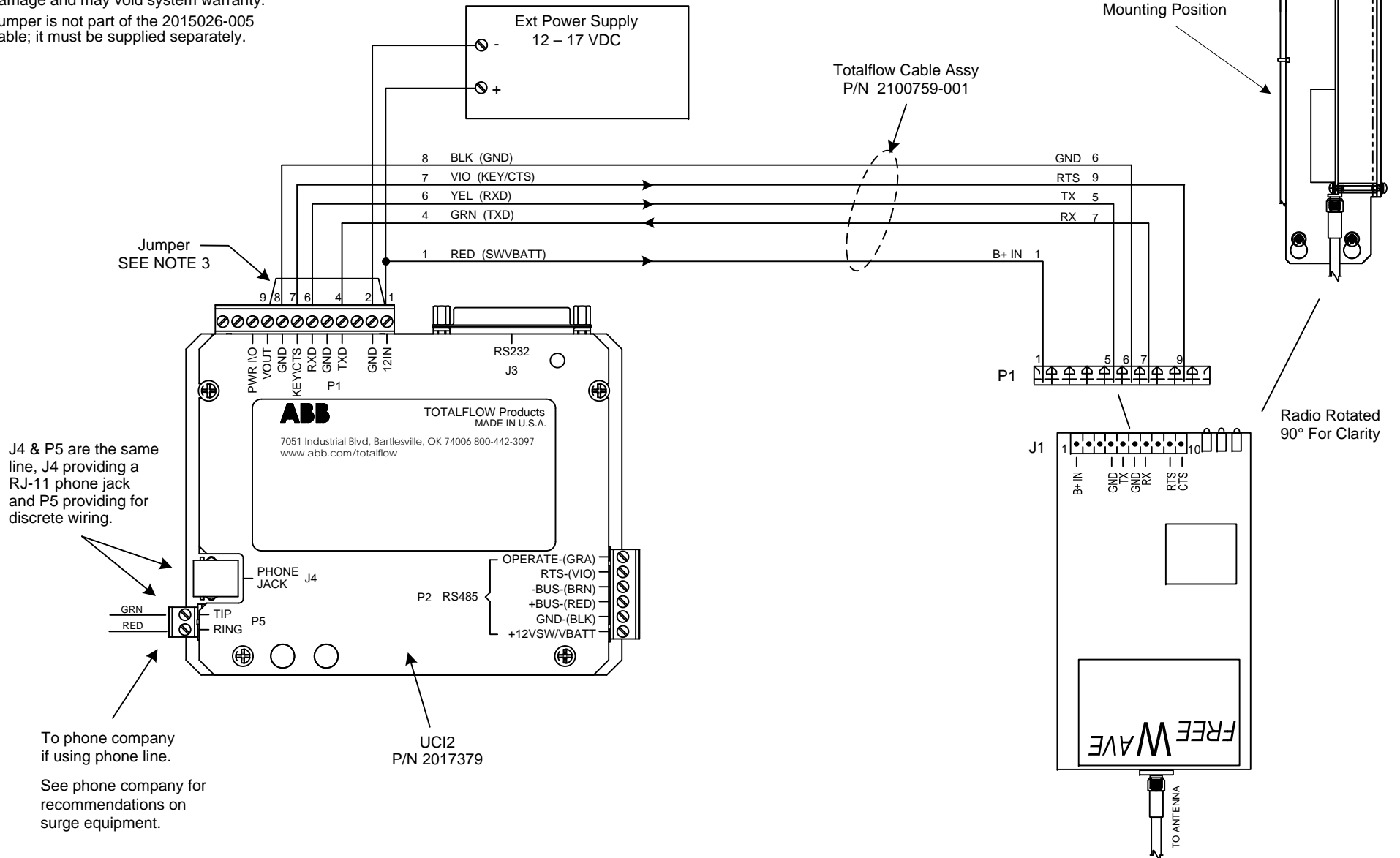


NOTES:

1. **WARNING:** This drawing does not illustrate completely the installation methods required for hazardous locations. Prior to any installation in a Classified Hazardous Location, verify installation methods by the Control Drawing referenced on the product's name tag and national and local codes.
2. **WARNING:** Using a non-factory RS232 data cable between UC12 unit may result in damage and may void system warranty.
3. Jumper is not part of the 2015026-005 cable; it must be supplied separately.



REF: N/A

	TOTALFLOW Products	ACTION	DOC TYPE	TITLE	DWG NO.	REV	SHEET
		D23803	UD	UC12 W/EXT SWITCHED PWR TO FREEWAVE RADIO DGR09RFS REV AE/AH FGRI0-M/S (RS-232)	2102917	AC	1 OF 1