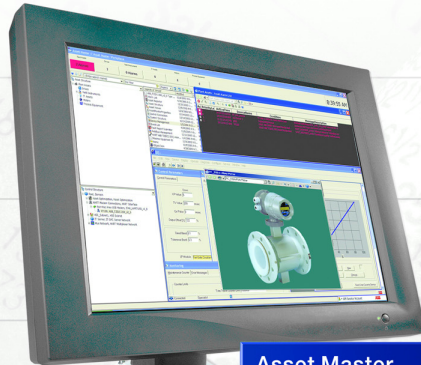



Industrial^{IT} Asset Master 5.0

Powered by 800xA System Version 5.0

Release Notes

Asset Master



Asset Master ▶	Calibration
	Work Order
	Maintenance
Configuration ▶	Magnetic Flowmeter 
Diagnostics	Pressure Transmitter
HART	Valve Positioner
PROFIBUS	pH Analyzer
FOUNDATION Fieldbus	Temperature Transmitter
	Mass Flowmeter
	Damper Drive
	Oxygen Analyzer

Industrial^{IT}
Asset Master 5.0
Powered by 800xA System Version 5.0

Release Notes

NOTICE

This document contains information about one or more ABB products and may include a description of or a reference to one or more standards that may be generally relevant to the ABB products. The presence of any such description of a standard or reference to a standard is not a representation that all of the ABB products referenced in this document support all of the features of the described or referenced standard. In order to determine the specific features supported by a particular ABB product, the reader should consult the product specifications for the particular ABB product.

The information in this document is subject to change without notice and should not be construed as a commitment by ABB. ABB assumes no responsibility for any errors that may appear in this document.

In no event shall ABB be liable for direct, indirect, special, incidental or consequential damages of any nature or kind arising from the use of this document, nor shall ABB be liable for incidental or consequential damages arising from use of any software or hardware described in this document.

This document and parts thereof must not be reproduced or copied without written permission from ABB, and the contents thereof must not be imparted to a third party nor used for any unauthorized purpose.

The software or hardware described in this document is furnished under a license and may be used, copied, or disclosed only in accordance with the terms of such license.

This product meets the requirements specified in EMC Directive 89/336/EEC and in Low Voltage Directive 72/23/EEC.

TRADEMARKS

All rights to copyrights, registered trademarks, and trademarks reside with their respective owners.

Copyright © 2003-2007 by ABB.
All rights reserved.

Release: January 2007
Document number: 3KXD151800R4101

Table of Contents

Section 1 - Release Notes

Introduction	7
Product Description	8
Functionality Changes	8
New in This Release	8
Changes in This Release	8
Product Support	8
Third Party Software	9
Related Documentation	10

Section 2 - Fixed Problems

Installation	11
Administration	11
Configuration	12
Operational	12
Instruction Manual Changes	12
Miscellaneous	13

Section 3 - Known Problems

Installation	15
Administration	15
Configuration	16
Operational	16
Instruction Manual Changes	18
Miscellaneous	19

Section 1 Release Notes

Introduction

This document represents the release notes for Asset Master 5.0.

This document provides a brief overview on functionality. It lists the problems that existed in the previous version or service pack that were fixed and corrected in this release. It also enumerates known problems encountered in the final testing of this product release and identifies workarounds that help overcome the problem. The document contains additional notes that may be valuable to customers and service personnel working with the product. It replaces the existing release notes for the prior release and is included on the product CD.

Fixed and Known Problems are divided into functional categories:

- Installation
- Administration
- Configuration
- Operational
- Instruction Manual Changes
- Miscellaneous

Product Description

Asset Master is an application for managing, configuring and optimizing assets and their performance.

The key functional areas within Asset Master are:

- Device Management and Fieldbus
- Asset Optimization

Users have access to information from these areas via the Asset Master Workplace. The traditional engineering functions for device parameterization and configuration are available. In addition, Asset Master allows the user to have direct access to device documentation, standard operating procedures, drawings etc., depending on how the application has been configured.

The enabling technique for the above is the Aspect Object™ technology.

Asset Master is designed to run on Microsoft Windows XP/2003. More information about Asset Master can be found in *Asset Master - Installation Guide*, *Asset Master - Basic Configuration and Operation Manual* and *Asset Master - Advanced Configuration Manual*.

Functionality Changes

New in This Release

Changes in This Release

Asset Master 5.0 is the first version. As such, there are no functional changes to report for this release. Any functionality changes in a future release will be mentioned in this section.

Product Support

Contact ABB technical support for assistance in problem reporting.

Third Party Software

Third party software included with Asset Master have been evaluated for use with Asset Master and has been found to be fully compatible and functional with Asset Master at the time of release. Some of the software is included with the Asset Master installation DVDs.

Refer to ABB Solutionsbank and ABB Library for an up-to-date, comprehensive listing of all software that has been evaluated including Service Packs, rollups and hot fixes released following the Asset Master release.

For Microsoft Security Updates Validation Status for IIT System Asset Master 5.0, refer to Product Bulletin 3BSE039977 located in Solutions bank.

The complete list of software can be found at <http://solutionsbank.abb.com> and <http://inside.abb.com/library>.

When reviewing the list of software and determining what to install, the affect of the software should be evaluated for each installation. For more information on the installation procedure, refer to *Asset Master - Installation Guide*.

Related Documentation

Table 1. Related Documentation

Title	Description
Asset Master 5.0 Installation	This manual describes how to install Asset Master software.
Asset Master 5.0 Advanced Configuration Manual	This document provides greater detail on all areas of usage of Asset Master. It is intended for advanced usage of Asset Master covering details such as SMP and CMMS setup.
Industrial Ethernet: A Pocket Guide Publisher: ISA - The Instrumentation, Systems, and Automation Society, May 2002 ISBN: 1556177887	How to Plan, Install, and Maintain TCP/IP Ethernet Networks: The Basic Reference Guide for Automation and Process Control Engineers.
Foundation Fieldbus: A Pocket Guide Publisher: ISA - The Instrumentation, Systems, and Automation Society, July 2002 ISBN: 1556177755	Summary of background information, tips, tricks, and items to note when installing, maintaining, or trouble-shooting.

Section 2 Fixed Problems



Asset Master 5.0 is the first release of Asset Master. As such, there are no fixed problems to report at this time. This section may list corrections/fixes provided in future releases.

Installation

Table 2 lists the critical or major installation issues that have been corrected since the previous version or service pack. A brief description of the correction has also been given.

Table 2. Corrected Installation Issues

Issue	Correction or Fix
-/-	-/-

Administration

Table 3 lists the major system or product administration issues that have been corrected since the previous version or service pack. A brief description of the correction has also been given.

Table 3. Corrected Administration Issues

Issue	Correction or Fix
-/-	-/-

Configuration

Table 4 lists the major system or product configuration issues that have been corrected since the previous version or service pack. A brief description of the correction has also been given.

Table 4. Corrected Configuration Issues

Issue	Correction or Fix
-/-	-/-

Operational

Table 5 lists the major system or product operational issues that have been corrected since the previous version or service pack. A brief description of the correction has also been given.

Table 5. Corrected Operational Issues

Issue	Correction or Fix
-/-	-/-

Instruction Manual Changes

Table 6 list the problems or issues in the instruction manuals that have been corrected since the previous version or service pack. A brief description of the correction has also been given.

Table 6. Instruction Manual Corrections

Instruction	Change or Correction
-/-	-/-

Miscellaneous

Table 7 lists the major issues that do not fit into one of the other categories that have been corrected since the previous version or service pack. A brief description of the correction has also been given.

Table 7. Corrected Miscellaneous Issues

Problem or Issue	Correction or Fix
-/-	-/-

Section 3 Known Problems

Installation

Table 8 lists issues that may exist and affect the installation and upgrade of the system or product at time of release. Workarounds, clarifications, or helpful hints have been provided for each issue wherever possible.

Table 8. Installation Issues

Issue	Workarounds, Clarifications, and Helpful Hints
-/-	-/-

Administration

Table 9 lists the issues that may exist and affect administration at time of release including user, node, and service structure related problems. Workarounds, clarifications, or helpful hints have been provided for each issue wherever possible.

Table 9. Administration Issues

Issue	Workarounds, Clarifications, and Helpful Hints
-/-	-/-

Configuration

Table 10 lists the issues that may exist and affect configuration of the system or product at time of release. Workarounds, clarifications, or helpful hints have been provided for each issue wherever possible.

Table 10. Configuration Issues

Issue	Workarounds, Clarifications, and Helpful Hints
A multiplexer instance in Asset Master Control Network allows the same instance to be inserted under itself. Such an instance, inserted under itself, CANNOT be removed from Asset Master.	There is no workaround available in the current release. Extreme care must be taken to ensure that a multiplexer instance is not inserted under itself.

Operational

Table 11 lists the issues that may exist and affect operational of the system or product at time of release. Workarounds, clarifications, or helpful hints have been provided for each issue wherever possible.

Table 11. Operational Issues

Issue	Workarounds, Clarifications, and Helpful Hints
Logover fails after opening and then closing the FF Upload shortcut link.	Close and re-open the Asset Master Workplace.
If 'Download' operation is performed repeatedly, one after the other, then the device DTM gets disconnected.	When the 'Download' operation fails, upload from the device. Change the required DTM parameter(s) and download again.
HART device DTM address configuration is lost after logover for HART devices connected to <i>ifak USB HART Modem</i> . PROFIBUS device DTM address configuration is lost after logover for PROFIBUS devices connected to <i>ifak USB PROFIBUS Interface</i> .	To avoid the issue follow these steps: 1. After scanning the online devices disable communication 2. Close and then re-open workplace 3. Logover to the intended user Alternately, change the DTM addresses manually and go online.

Table 11. Operational Issues (Continued)

Issue	Workarounds, Clarifications, and Helpful Hints
Aspect View of Object/Device in Control Structure becomes blank when Object/Device is selected.	Close and re-open the Asset Master Workplace
Unable to open some aspects like Device Management and Fieldbus Management or view any graphic aspects.	<p>Set rights for the Users group on the local machine on <i>msvbvm60.dll</i>.</p> <p>To set the right permissions do the following:</p> <ol style="list-style-type: none"> 1. Right click on the <i>WINDOWS/system32</i> directory 2. Select <i>Properties/Security</i> tab and click 'Advanced' 3. Add the group "Users" and give them the permissions: <ol style="list-style-type: none"> a) Traverse folder/Execute File b) List Folder /Read Data c) Read Attributes d) Read Extended Attributes e) Read Permissions 4. Check the "apply these permissions to objects..." checkbox 5. Click OK <p>If the above settings already exist, then apply them again.</p>
Sometimes FDT Interface crash error is observed.	Disable Communication and then close and re-open Asset Master Workplace.
Sometimes, errors similar to " <i>The instruction at '777c8fea' referenced memory at '00000110'. The memory could not be written.</i> " is observed.	Click 'OK' to terminate the application and then restart the application.

Table 11. Operational Issues (Continued)

Issue	Workarounds, Clarifications, and Helpful Hints
When PROFIBUS adapter is disconnected, the status is not updated by ifak adapter DTM.	No workaround available. Ensure that PROFIBUS adapter is always connected during online communication.
When the following message is observed: “[Error] Access is denied. Aspect: [Aspect System Structure] Aspect System Structure/SAP Connectivity/SAP Equipment ID/ SAP Equipment ID:General Properties Transaction Cancelled.”	Click OK on the message box. Close and re-open the Asset Master Workplace.

Instruction Manual Changes

Table 12 list the problems or issues in the instruction manuals that exist at product release. The corrections to the instruction have been indicated.

Table 12. Instruction Manual Changes

Instruction	Error (Page)	Change or Correction
-/-	-/-	-/-

Miscellaneous

Table 13 list the problems or issues known to exist with the current release that do not fit into one of the other categories. A workaround, when possible, has been identified for each problem or issue.

Table 13. Miscellaneous Issues

Problem or Issue	Workarounds, Clarifications, and Helpful Hints
-/-	-/-



Asset Master is based on 800xA Products. It is recommended to refer the following release notes:

- *3BDD011940R5001 - Industrial^{IT} 800xA Device Management PROFIBUS & HART Release Notes*
- *3BDD012905R5001 - Industrial^{IT} 800xA Device Management FOUNDATION Fieldbus Release Notes*
- *3BUA000119R5001 - Industrial^{IT} 800xA Asset Optimization Release Notes*

The documents can be found on DVD1 in the folder *Released Documentation\800xA*. Alternately, the latest version of the documents can be downloaded from [ABB Solutions Bank](#).

ABB has Sales & Customer Support expertise in over 100 countries worldwide.

www.abb.com/instrumentation

The Company's policy is one of continuous product improvement and the right is reserved to modify the information contained herein without notice.

Printed in USA (January 2007)

© ABB 2007



ABB Inc.
125 East County Line Road
Warminster, PA
18974-4995
USA
Tel: +1 215 674 6000
Fax: +1 215 674 7183

ABB Ltd
Howard Road, St. Neots
Cambridgeshire
PE 19 8EU
UK
Tel: +44 (0)1480 475321
Fax: +44 (0)1480 217948

3KXD151800R4101