

—
GPG BUILDING AUTOMATION

ABB-secure@home

Being free means to live in a secure home





2 of **3** people want security
in their smart home



Being free means to live in a secure home



ABB-secure@home

What is ABB-secure@home?

Free to be secure

ABB-secure@home is an easy-to-use anti-intrusion system:

- Perimeter and Indoor protection
- Outdoor protection
- Smoke, gas-leak and flood protection
- Smart home integration

A secure home, protected at 360 degrees



ABB-secure@home

Overview

Proprietary protocol and encryption plus a unique rolling code for all arming/disarming controls provide maximum security during transmission

Secure

CSMA (Carrier Sense Multiple Access) technology allows to optimize communications avoiding the disturbances, since the alarm transmitter and the receiver verify the absence of band occupancy,

Wireless technology 868.3 MHz with bidirectional communication allows flexibility:

Flexible

- to install the security system without brickwork
- to place security sensors in the most convenient spot to maximize protection

Initial setup is just to create a PIN code on the central unit and then power up the sensors to be paired wirelessly

Simple and Integrated

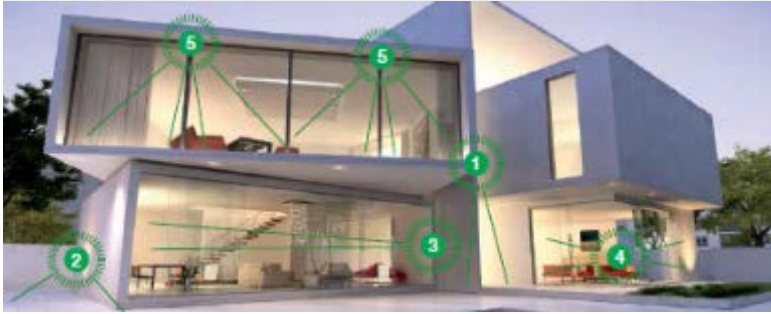
Commissioning is particularly fast and much easier connecting also a free@home system, with an intuitive and easy to use app which can be used to customize all the parameters

Secure intrusion system with the flexibility of wireless and state-of-the-art commissioning

ABB-secure@home

Applications overview

Outdoor protection



Perimeter and Indoor protection



Smoke, gas-leak, flood protection



Smart Home integration



ABB-secure@home

Applications

Outdoor protection

Security starts outside your home.

An effective perimeter detection protects the house even before the intrusion:

- The infrared sensors are positioned in the outdoor spaces, in the garden and around the entire house perimeter:
- Bidirectional detectors, door/window detectors, main or secondary entrances: a professional wireless technology can monitor the perimeter of any building in an accurate and punctual manner.

The first line of defense is outside



ABB-secure@home

Applications

Indoor and perimeter protection

Inside the home, the atmosphere does not change.

Your peace of mind is guaranteed by two levels of protection: the volumetric and opening detection:

- Any movement, any presence inside the house is detected by volumetric sensors. They are located in strategic points and are equipped with different coverage lenses according to specific needs
- Windows, doors, main or secondary entrances, shutters or blinds, any opening of the house is controlled by perimeter detection sensors.

Safety at every corner of the house



ABB-secure@home

Applications

Smoke, gas-leak, flood protection

- Methane gas and LPG detectors allow for early detection of gas leaks inside the room where they are installed and report it
- An excessive presence of smoke in a room can be the signal of a possible starting of fire and the optical smoke detector is able to identify it in the environment and report it
- Water leaks inside the house can cause very expensive damage that can also affect any underlying apartments. The flood detectors immediately detect the presence of water on the floor and report it

Everything is always under control



ABB-secure@home

Applications

Smart Home integration

There is no safety without comfort, there is no comfort without the natural feeling of living in complete freedom in your own home.

- Security and home automation mixed scenarios and actions
- Remote access and easy visualization of status of all the intrusions zones and sensors
- Push-notifications to mobile devices with a myABB-Living Space account

Security at your fingertips



ABB-secure@home

Features

Everything is secure!

Arming and disarming

- Whether it's by the capacitive keypad of the central unit, the compact keyfob or a smarthome app, controlling your intrusion system has never been more convenient

Intrusion detection

- The best against burglars is combining presence simulation, an effective outdoor, indoor and perimeter protection together with signaling through sirens and GSM

Combined scenes and actions

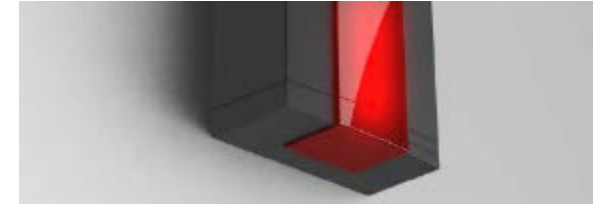
- Interact with your Smart Home creating the best fitting

Remote control

- Control your intrusion system via GSM or free@home from anywhere in the world



Arming and disarming



Intrusion detection



Combined scenes and actions



Remote control

Residential Security

ABB-secure@home / Busch-secure@home Overview

SYSTEM DEVICES



7" TOUCH PANEL FREE@HOME + SECURE@HOME



SENSORS



ABB-secure@home

Installation

Wireless

- ABB-secure@home portfolio encompasses wireless devices and sensors
- The wireless technology
 - Makes renovation projects much easier
 - Allows the placement of security sensors in the most convenient spot to maximize protection
- The center of the system is the Central Unit, which is equipped with display and keypad for quick arming/disarming the system
- The central units allows also to be connected with free@home and Welcome system, to provide a full ABB smart home experience

For new dwellings and renovation

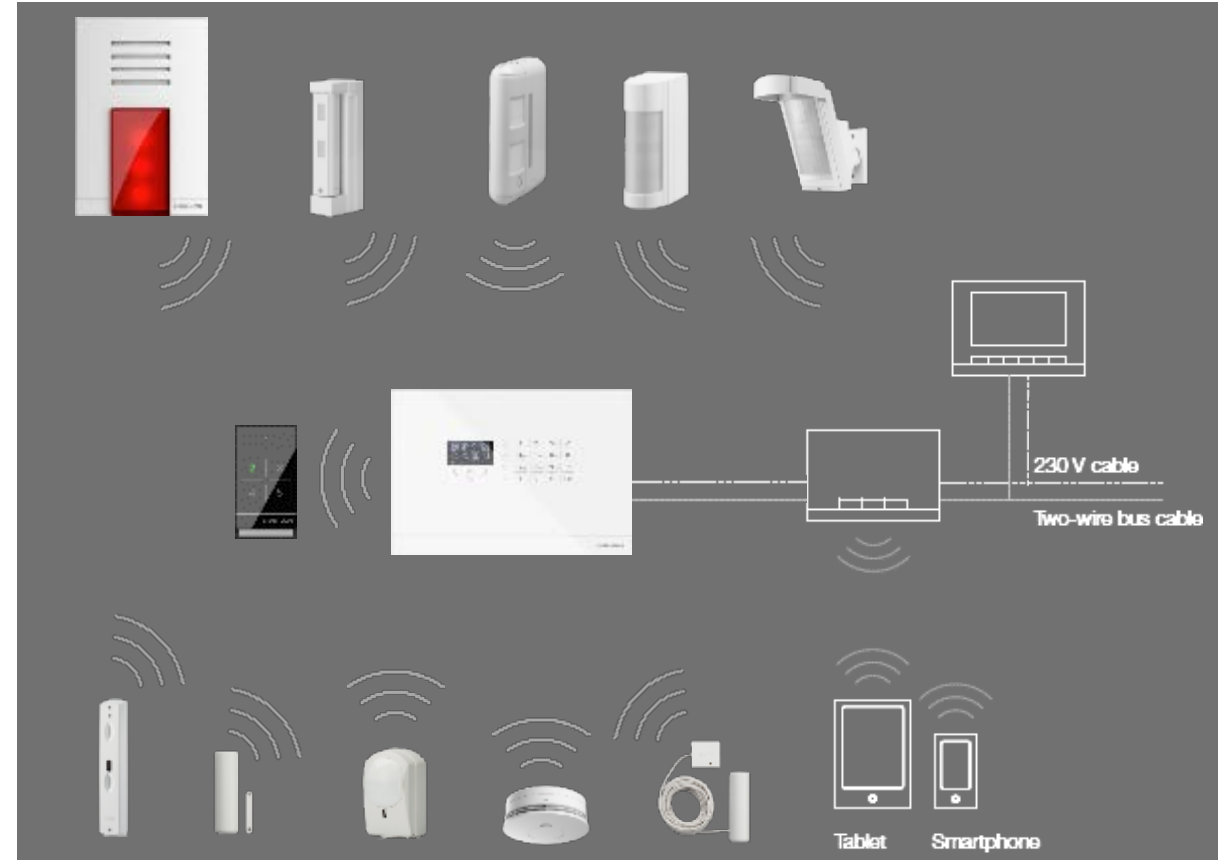


ABB-secure@home

Being free means a safe and protected house



ABB-secure@home thinks about protecting you, your home, your world.

ABB