

LIGHTWEIGHT CHANGER FOR ROBOTS - FIXED PART

LWR50F-13-05-A / 10.08.09.00016

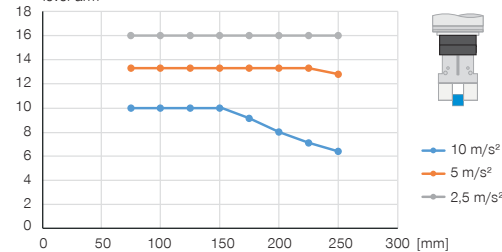
PRODUCT SPECIFICATIONS



MOTCH

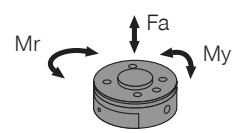
Vertical design with centered holding force

Shows the maximum handling weight depending on acceleration and lever arm



Forces and moments

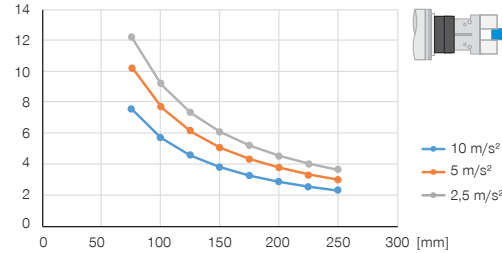
Shows static forces and moments



Mr [Nm]	20
My [Nm]	40
Fa [N]	500

Horizontal design with centered holding force

Shows the maximum handling weight depending on acceleration and lever arm



RECOMMENDED ACCESSORIES



GRIPPING COMPONENTS



LWR50L-02-00001-A
Lightweight changer for robots - batch part



LWR50L-03-00001-A
Lightweight changer for robots - batch part



LWR50L-22-00001-A
Lightweight changer for robots - batch part



LWR50L-23-00002-A
Lightweight changer for robots - batch part



CONNECTIONS / OTHER



CSTE01483
Connection cable straight 5 m - M12 socket



KAG500IL
Plug-in connector straight 5 m - plug, socket M12



SCM-C-00-00-A
Smart Communication Module

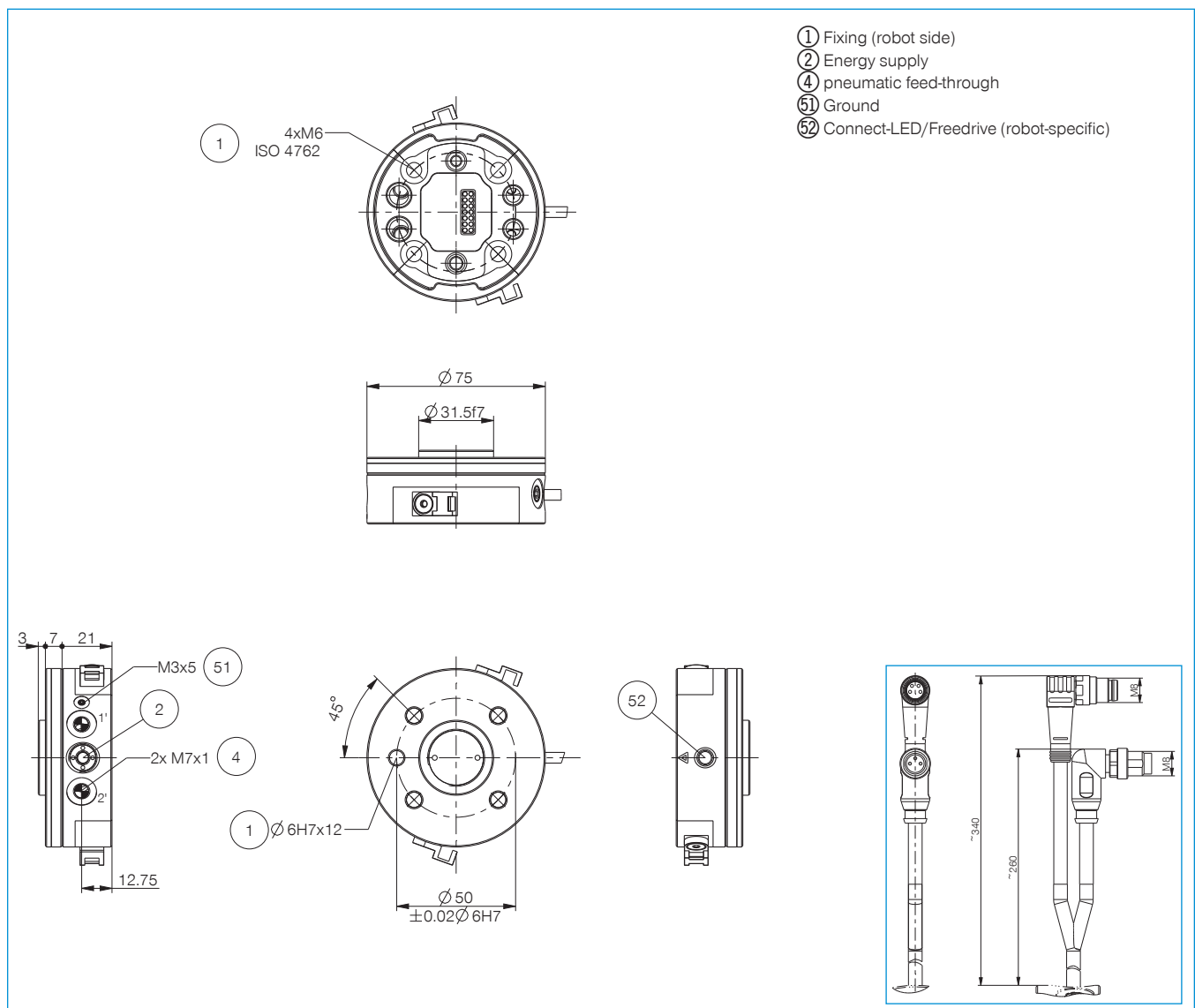


WVM7
Angled Fittings - Quick Connect Style



ZUB123084
Strain relief

► Technical data	
Order no.	Zimmer Group LWR50F-13-05-A Schmalz 10.08.09.00016
Suitable for robot type	ABB GoFa - CRB15000
Control	IO-Link
Connecting flange according EN ISO 9409-1	PCD 50
Maximum handling weight [kg]	25
Connecting cable	Plug, M8, 3-pole
Connecting cable 2	Plug, M8, 4-pole
Locking stroke [mm]	1
Electrical energy transfer	integrated
Pneumatic energy transfer	integrated
Tightening force [N]	50
Release force [N]	0
Repetition accuracy in X, Y [mm]	0.05
Repetition accuracy in Z [mm]	0.05
Offset at coupling max. in X,Y [mm]	1.0
Operating temperature [°C]	5 ... +60
Service life in cycles	100,000
Protection to IEC 60529	IP40
Weight [kg]	0.3



LIGHTWEIGHT CHANGER FOR ROBOTS - FIXED PART

LWR50F-14-05-A

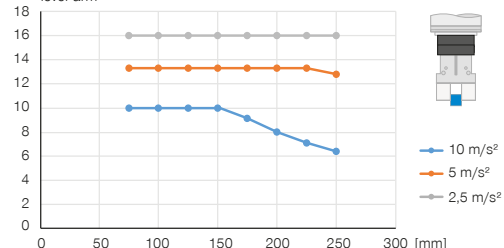
PRODUCT SPECIFICATIONS



MATCH

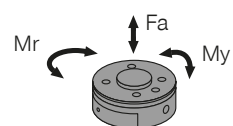
Vertical design with centered holding force

Shows the maximum handling weight depending on acceleration and lever arm



Forces and moments

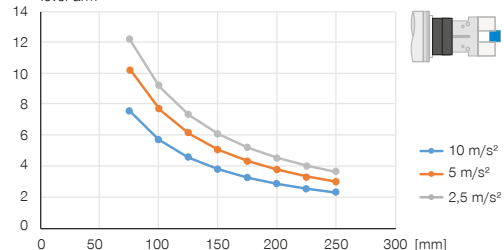
Shows static forces and moments



Mr [Nm]	20
My [Nm]	40
Fa [N]	500

Horizontal design with centered holding force

Shows the maximum handling weight depending on acceleration and lever arm



RECOMMENDED ACCESSORIES



GRIPPING COMPONENTS



LWR50L-02-00001-A
Lightweight changer for robots - batch part



LWR50L-03-00001-A
Lightweight changer for robots - batch part



LWR50L-22-00001-A
Lightweight changer for robots - batch part



LWR50L-23-00002-A
Lightweight changer for robots - batch part



CONNECTIONS / OTHER



CSTE01483
Connection cable straight 5 m - M12 socket



KAG500IL
Plug-in connector straight 5 m - plug, socket M12



WVM7
Angled Fittings - Quick Connect Style



ZUB123084
Strain relief

LIGHTWEIGHT CHANGER FOR ROBOTS - FIXED PART

LWR50F-15-01-A / 10.08.09.00021

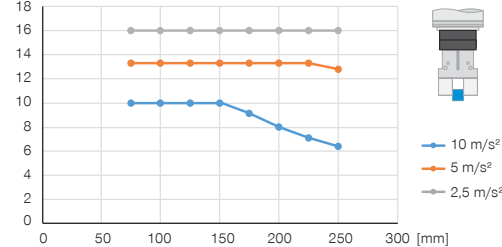
PRODUCT SPECIFICATIONS



MATCH

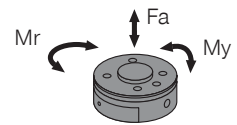
Vertical design with centered holding force

Shows the maximum handling weight depending on acceleration and lever arm



Forces and moments

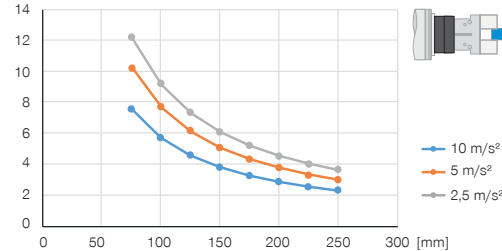
Shows static forces and moments



Mr [Nm]	20
My [Nm]	40
Fa [N]	500

Horizontal design with centered holding force

Shows the maximum handling weight depending on acceleration and lever arm



RECOMMENDED ACCESSORIES



GRIPPING COMPONENTS



LWR50L-03-00002-A
Lightweight changer for robots - batch part



LWR50L-03-00003-A
Lightweight changer for robots - batch part



LWR50L-23-00006-A
Lightweight changer for robots - batch part



CONNECTIONS / OTHER



WVM7
Angled Fittings - Quick Connect Style



ZUB123084
Strain relief

► Technical data	
Order no.	Zimmer Group LWR50F-15-01-A Schmalz 10.08.09.00021
Suitable for robot type	ABB IRB1100
Control	Digital I/O
Connecting flange according EN ISO 9409-1	PCD 31,5
Maximum handling weight [kg]	25
Connecting cable	Plug, M12, 12-pole
Locking stroke [mm]	1
Electrical energy transfer	integrated
Pneumatic energy transfer	integrated
Tightening force [N]	50
Release force [N]	0
Repetition accuracy in X, Y [mm]	0.05
Repetition accuracy in Z [mm]	0.05
Offset at coupling max. in X,Y [mm]	1.0
Operating temperature [°C]	5 ... +60
Service life in cycles	100,000
Protection to IEC 60529	IP40
Weight [kg]	0.39

- ① Fixing (robot side)
- ② Energy supply
- ④ pneumatic feed-through
- ⑤1 Ground
- ⑤2 Connect-LED/Freedrive (robot-specific)

