

CATALOG

Cable and wire management solutions

Catamount | *Ty-Duct*



Reliable, versatile solutions for electrical installations

Catamount® cable ties deliver dependable fastening solutions for general-purpose applications. Designed for commercial and residential construction, they provide electricians and contractors with a durable, cost-effective choice for cable management. Catamount cable ties help electricians complete projects efficiently while maximizing value. Available in a wide range of sizes, styles and colors, these products meet key U.S. electrical listing requirements to ensure compliance and performance.

Ty-Duct® wiring duct solutions offer a complete system for routing and concealing wiring in control panels. Designed to accommodate everything from compact wall-mount panels to large integrated systems, Ty-Duct wiring duct is available in solid, wide slot, narrow slot and round hole versions to meet various capacity and flexibility needs. With widths from 0.75" to 6" and depths from 1" to 5", plus an optional adhesive back for quick installation, Ty-Duct wiring duct ensures a clean, organized wiring solution. A full selection of accessories and tools simplifies installation, while lead-free construction and a lightweight halogen-free version provide additional safety and environmental benefits.

Whether you need reliable cable fastening with Catamount cable ties or efficient wire routing with Ty-Duct wiring duct and covers, ABB delivers the versatile, high-performance solutions electricians trust.

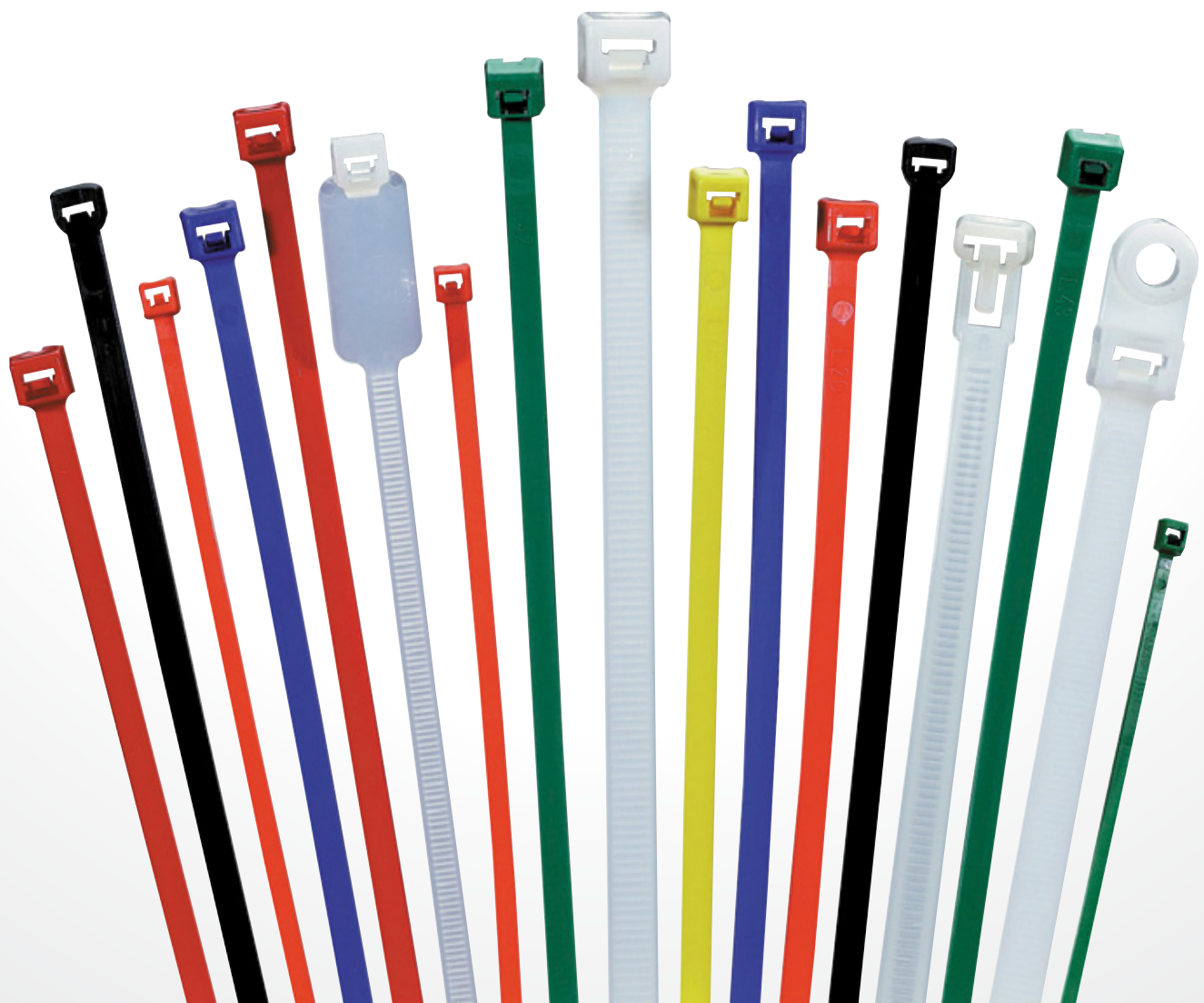
Table of contents

01. Catamount® cable ties	04
02. Ty-Duct® wiring duct	16
03. Spiral wrap, grommeting, hook-and-loop and braided sleeving	48
04. Index	58



01

Catamount® cable ties



Catamount® cable ties

Catamount cable ties	
Introduction	06
Catalog number construction	07
Standard cable ties — natural and UV-resistant black	08
Colored cable ties	10
Panel-mounting cable ties	12
Integrated mounting hole cable ties	13
Cable tie mounting bases	14

Catamount[®] cable ties

Introduction

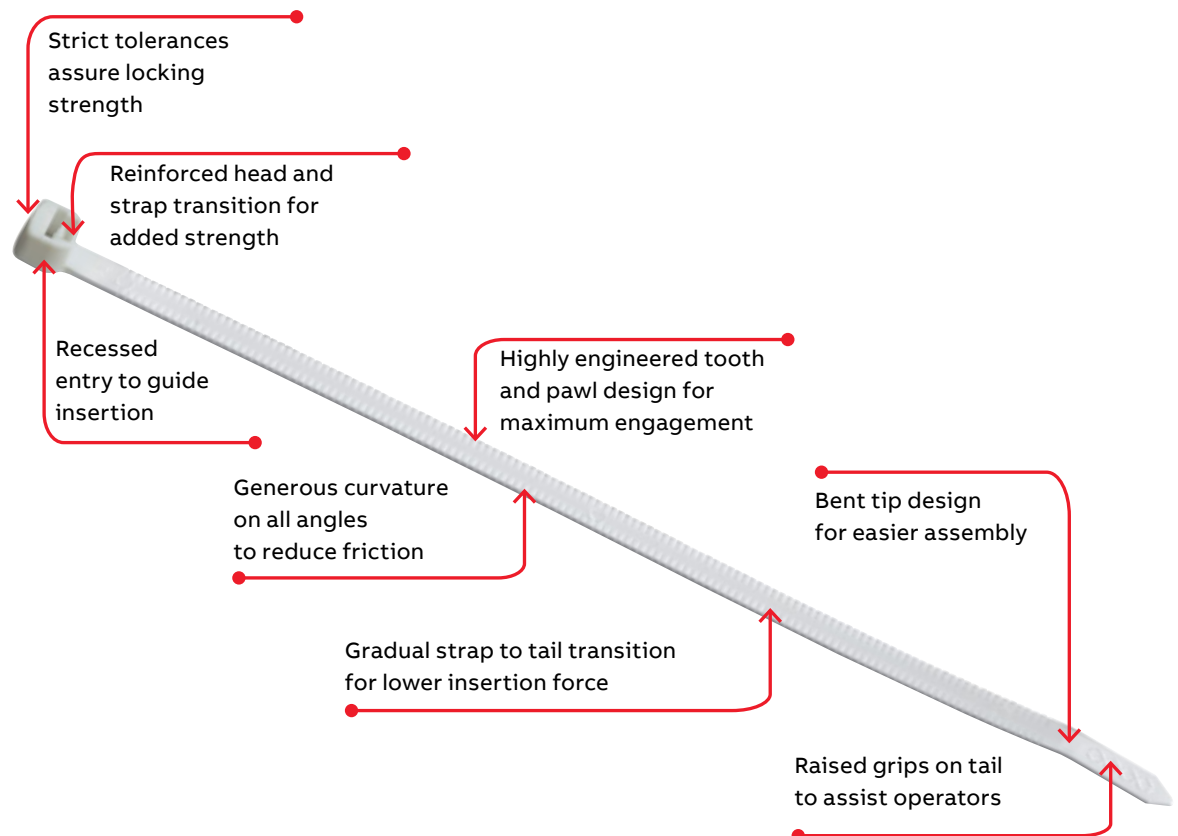
State-of-the-art robotic and raw material handling equipment assures product and material integrity throughout the manufacturing process.

Catamount cable ties and mounting bases fit the needs of general-purpose fastening. Installers quickly discover that Catamount products offer durable and value-priced cable bundling for a variety of commercial and residential construction applications. Electricians can also take advantage of other benefits in stocking Catamount cable ties.

Catamount ties are offered in a wide range of sizes, styles and colors and meet listing requirements for most electrical termination and fastening projects. A choice of matching tools is also offered to provide quick and reliable installations. Where applicable, Catamount cable ties are cULus recognized.

Product range

- Miniature
- Heavy-duty
- Intermediate
- Extra heavy-duty
- Standard
- Mounted head





Catamount® cable ties


Catalog number construction


Ties


L	4	18	MH	-	9	M
↓	↓	↓	↓		↓	↓
Product prefix	Length	Tensile strength	Type of product		Color	Quantity
L Cable ties		18 lb. 30 lb. 40 lb. 50 lb. 120 lb. 175 lb. 250 lb.	Blank Nylon (polyamide) 6.6 MH Mounting head PM Push-mount		0 Black** 2 Red 3 Orange 4 Yellow 5 Green 6 Blue 9 Natural	C 100 D 500 Q 500 M 1000 L 1000

















**Weather-resistant

Mounting bases

MP	NY	-	750	-	9	C
↓	↓		↓		↓	↓
Product prefix	Material		Size/no.		Color	Quantity
MP Mounting pad	NY Polyamide (nylon)		0.75 in.		0 Black** 9 Natural	C 100 pack





**Weather-resistant

Catamount[®] cable ties

Standard cable ties



- Material: Nylon 6.6
- Certifications/standards: UL/EN/CSA 62275
- Support rating: Type 21
- Flammability rating: UL94V-2
- Plenum rated: AH-2
- Min. installation temperature: -20 °C (-4 °F)
- Min./max. operating temperature: -40 °C to 85 °C (-40 °F to 185 °F)
- Color: Natural and UV-resistant black

Standard nylon 6.6 cable ties — natural and UV-resistant black

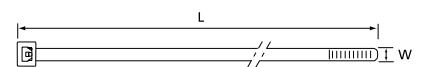
Cat. no.	Length (in.)	Width (in.)	Max. bundle dia. (in.)	Tensile strength (lb.)	Color	Qty.
Miniature — 18 lb. series						
L-4-18-9-C	4.1	0.1	0.75	18	Natural	100
L-4-18-9-M	4.1	0.1	0.75	18	Natural	1000
L-4-18-0-C	4.1	0.1	0.75	18	UV black	100
L-4-18-0-M	4.1	0.1	0.75	18	UV black	1000
L-6-18-9-C	6.38	0.1	1.5	18	Natural	100
L-6-18-9-M	6.38	0.1	1.5	18	Natural	1000
L-6-18-0-C	6.38	0.1	1.5	18	UV black	100
L-6-18-0-M	6.38	0.1	1.5	18	UV black	1000
L-8-18-9-C	7.99	0.1	1.5	18	Natural	100
L-8-18-9-M	7.99	0.1	1.5	18	Natural	1000
L-8-18-0-C	7.99	0.1	1.5	18	UV black	100
L-8-18-0-M	7.99	0.1	1.5	18	UV black	1000
Intermediate — 30–40 lb. series						
L-5-30-9-C	5.8	0.14	1.6	30	Natural	100
L-5-30-9-M	5.8	0.14	1.6	30	Natural	1000
L-5-30-0-C	5.8	0.14	1.6	30	UV black	100
L-5-30-0-M	5.8	0.14	1.6	30	UV black	1000
L-8-40-9-C	8.9	0.14	1.6	40	Natural	100
L-8-40-9-M	8.9	0.14	1.6	40	Natural	1000
L-8-40-0-C	8.9	0.14	1.6	40	UV black	100
L-8-40-0-M	8.9	0.14	1.6	40	UV black	1000
L-11-40-9-C	11.77	0.14	2	40	Natural	100
L-11-40-9-D	11.77	0.14	2	40	Natural	500
L-11-40-0-C	11.77	0.14	2	40	UV black	100
L-11-40-0-D	11.77	0.14	2	40	UV black	500
L-14-40-9-C	14.28	0.14	4	40	Natural	100
L-14-40-9-D	14.28	0.14	4	40	Natural	500
L-14-40-0-C	14.28	0.14	4	40	UV black	100
L-14-40-0-D	14.28	0.14	4	40	UV black	500

Tooling



ERG50
For use with 0.094
to 0.184 inch wide
(18 to 50 lb.) ties.

Diagram



Standard cable ties — natural and UV-resistant black

Cat. no.	Length (in.)	Width (in.)	Max. bundle dia. (in.)	Tensile strength (lb.)	Color	Qty
Standard — 50 lb. series						
L-7-50-9-C	7.6	0.18	1.87	50	Natural	100
L-7-50-9-M	7.6	0.18	1.87	50	Natural	1000
L-7-50-0-C	7.6	0.18	1.87	50	UV black	100
L-7-50-0-M	7.6	0.18	1.87	50	UV black	1000
L-11-50-9-C	11.1	0.18	3	50	Natural	100
L-11-50-9-D	11.1	0.18	3	50	Natural	500
L-11-50-0-C	11.1	0.18	3	50	UV black	100
L-11-50-0-D	11.1	0.18	3	50	UV black	500
L-14-50-9-C	14.6	0.18	4	50	Natural	100
L-14-50-9-D	14.6	0.18	4	50	Natural	500
L-14-50-9-L	14.6	0.18	4	50	UV black	1000
L-14-50-0-C	14.6	0.18	4	50	UV black	100
L-14-50-0-D	14.6	0.18	4	50	UV black	500
Heavy duty — 120 lb. series						
L-8-120-0-C	8.35	0.30	1.97	120	UV black	100
L-8-120-9-C	8.35	0.30	1.97	120	Natural	100
L-11-120-9-C	11.4	0.30	2.8	120	Natural	100
L-11-120-0-C	11.4	0.30	2.8	120	UV black	100
L-14-120-0-C	14.2	0.30	4	120	UV black	100
L-14-120-9-C	14.2	0.30	4	120	Natural	100
L-18-120-0-L	18	0.30	5.12	120	UV black	500
L-18-120-9-L	18	0.30	5.12	120	Natural	500
L-24-120-0-Q	24.2	0.30	6.89	120	UV black	500
L-24-120-0-L	24.2	0.30	6.89	120	UV black	50
L-24-120-9-Q	24.2	0.30	6.89	120	Natural	25
L-24-120-9-L	24.2	0.30	6.89	120	Natural	500
L-28-120-0-L	27.8	0.30	8.58	120	UV black	50
L-28-120-9-L	27.8	0.30	8.58	120	Natural	50
Extra heavy duty — 175 lb. series						
L-24-175-0-L	24	0.345	7.2	175	UV black	500
L-24-175-9-L	24	0.345	7.2	175	Natural	500
L-36-175-0-L	36	0.345	10.75	175	UV black	50
L-36-175-9-L	36	0.345	10.75	175	Natural	50
L-48-175-0-L	48	0.345	15	175	UV black	50
L-48-175-9-L	48	0.345	15	175	Natural	50
Super heavy duty — 250 lb. series						
L-28-250-0-L*	28	0.5	8	250	UV black	50

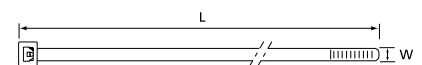
*L-28-250-0-L is not plenum rated AH-2

Tooling



ERG120
For use with 0.184 to 0.301 inch wide (50 to 120 lb.) ties.

Diagram



Catamount® cable ties

Colored cable ties



- Material: Nylon 6.6
- Certifications/standards: UL/EN/CSA 62275
- Support rating: Type 2/21
- Flammability rating: UL94V-2
- Min. installation temperature: 0 °C (32 °F)
- Min./max. operating temperature: -40 °C to 85 °C (-40 °F to 185 °F)

Standard nylon 6.6 cable ties — various colors

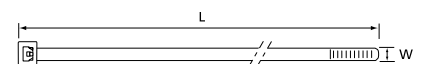
Cat. no.	Length (in.)	Width (in.)	Max bundle dia. (in.)	Tensile strength (lb.)	Color	Qty.
Miniature — 18 lb. series						
L-4-18-2-C	4.1	0.10	0.75	18	Red	100
L-4-18-3-C	4.1	0.10	0.75	18	Orange	100
L-4-18-4-C	4.1	0.10	0.75	18	Yellow	100
L-4-18-5-C	4.1	0.10	0.75	18	Green	100
L-4-18-6-C	4.1	0.10	0.75	18	Blue	100
L-6-18-2-C	6.3	0.10	1.5	18	Red	100
L-6-18-3-C	6.3	0.10	1.5	18	Orange	100
L-6-18-4-C	6.3	0.10	1.5	18	Yellow	100
L-6-18-5-C	6.3	0.10	1.5	18	Green	100
L-6-18-6-C	6.3	0.10	1.5	18	Blue	100
L-8-18-2-C	7.9	0.10	1.5	18	Red	100
L-8-18-3-C	7.9	0.10	1.5	18	Orange	100
L-8-18-4-C	7.9	0.10	1.5	18	Yellow	100
L-8-18-5-C	7.9	0.10	1.5	18	Green	100
L-8-18-6-C	7.9	0.10	1.5	18	Blue	100
Intermediate — 30–40 lb. series						
L-5-30-2-C	5.8	0.14	1.6	30	Red	100
L-5-30-3-C	5.8	0.14	1.6	30	Orange	100
L-5-30-4-C	5.8	0.14	1.6	30	Yellow	100
L-5-30-5-C	5.8	0.14	1.6	30	Green	100
L-5-30-6-C	5.8	0.14	1.6	30	Blue	100
L-8-40-2-C	8.9	0.14	1.6	40	Red	100
L-8-40-3-C	8.9	0.14	1.6	40	Orange	100
L-8-40-4-C	8.9	0.14	1.6	40	Yellow	100
L-8-40-5-C	8.9	0.14	1.6	40	Green	100
L-8-40-6-C	8.9	0.14	1.6	40	Blue	100
L-11-40-2-C	11.7	0.14	2	40	Red	100
L-11-40-3-C	11.7	0.14	2	40	Orange	100
L-11-40-4-C	11.7	0.14	2	40	Yellow	100
L-11-40-5-C	11.7	0.14	2	40	Green	100
L-11-40-6-C	11.7	0.14	2	40	Blue	100
L-14-40-2-C	14.2	0.14	4	40	Red	100
L-14-40-3-C	14.2	0.14	4	40	Orange	100
L-14-40-4-C	14.2	0.14	4	40	Yellow	100
L-14-40-5-C	14.2	0.14	4	40	Green	100
L-14-40-6-C	14.2	0.14	4	40	Blue	100

Tooling



ERG50
For use with 0.094
to 0.184 inch wide
(18 to 50 lb.) ties.

Diagram



Standard nylon 6.6 cable ties — various colors

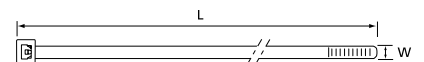
Cat. no.	Length (in.)	Width (in.)	Max bundle dia. (in.)	Tensile strength (lb.)	Color	Qty.
Standard — 50 lb. series						
L-7-50-2-C	7.6	0.18	1.8	50	Red	100
L-7-50-3-C	7.6	0.18	1.8	50	Orange	100
L-7-50-4-C	7.6	0.18	1.8	50	Yellow	100
L-7-50-5-C	7.6	0.18	1.8	50	Green	100
L-7-50-6-C	7.6	0.18	1.8	50	Blue	100
L-11-50-2-C	11.1	0.18	3	50	Red	100
L-11-50-3-C	11.1	0.18	3	50	Orange	100
L-11-50-4-C	11.1	0.18	3	50	Yellow	100
L-11-50-5-C	11.1	0.18	3	50	Green	100
L-11-50-6-C	11.1	0.18	3	50	Blue	100
L-14-50-2-C	14.6	0.18	4	50	Red	100
L-14-50-3-C	14.6	0.18	4	50	Orange	100
L-14-50-4-C	14.6	0.18	4	50	Yellow	100
L-14-50-5-C	14.6	0.18	4	50	Green	100
L-14-50-6-C	14.6	0.18	4	50	Blue	100
Heavy duty — 120 lb. series						
L-11-120-2-C	11.4	0.30	2.8	120	Red	100
L-11-120-3-C	11.4	0.30	2.8	120	Orange	100
L-11-120-4-C	11.4	0.30	2.8	120	Yellow	100
L-11-120-5-C	11.4	0.30	2.8	120	Green	100
L-11-120-6-C	11.4	0.30	2.8	120	Blue	100
L-14-120-2-C	14.2	0.14	4	120	Red	100
L-14-120-3-C	14.2	0.14	4	120	Orange	100
L-14-120-4-C	14.2	0.14	4	120	Yellow	100
L-14-120-5-C	14.2	0.14	4	120	Green	100
L-14-120-6-C	14.2	0.14	4	120	Blue	100

Tooling



ERG120
For use with 0.184 to 0.301 inch wide (50 to 120 lb.) ties.

Diagram



Catamount® cable ties

Panel-mounting cable ties



Characteristics

- For use in a pre-drilled hole in a panel with walls up to 0.125 in. (3.2 mm) thick
- Assembly and assembly of the beam with a single product
 - Quick and reliable clip mounting
 - Natural color for interior use and black color for exterior or interior use
 - Hole diameter for mounting 0.25 in. (6.35 mm)

Technical information

- Material: Nylon 6.6
- Certifications/standards: UL/EN/CSA 62275
- Support ratings: Type 1/11
- Min. installation temperature: -20 °C (-4 °F)
- Min./max. operating temperature: -40 °C to 85 °C (-40 °F to 185 °F)
- Colors: Natural and UV-resistant black

Panel-mounting cable ties

Cat. no.	Length (in.)	Width (in.)	Max. bundle dia. (in.)	Tensile strength (lb.)	Color	Qty.
L-7-50PM-0-C	7.87	0.19	1.7"	50	UV black	100
L-7-50PM-0-D	7.87	0.19	1.7"	50	UV black	1000
L-7-50PM-9-C	7.87	0.19	1.7"	50	Natural	100

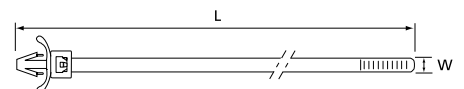
Tooling



ERG50

For use with 0.094 to 0.184 inch wide (18 to 50 lb.) ties.

Diagram



Catamount® cable ties

Integrated mounting hole cable ties



Characteristics

- Can be directly mounted on a bracket with a screw or rivet
- Ideal for pre-wiring of wire harnesses before assembly on all types of machines or installations — indoor and outdoor
- Black ties are UV resistant — especially recommended for exterior applications

Technical information

- Material: Nylon 6.6
- Certifications/standards: UL/EN/CSA 62275
- Support ratings: Type 1/11
- Min. installation temperature: -20 °C (-4 °F)
- Min./max. operating temperature: -40 °C to 85 °C (-40 °F to 185 °F)
- Colors: Natural and UV-resistant black

Integrated mounting hole cable ties

Cat. no.	Length (in.)	Width (in.)	Max. bundle dia. (in.)	Tensile strength (lb.)	Color	Screw hole size	Qty.
L-5-30MH-9-C	5.42	0.143	1.2	30	Natural	#8	100
L-5-30MH-9-M	5.42	0.143	1.2	30	Natural	#8	1000
L-5-30MH-0-C	5.42	0.143	1.2	30	UV black	#8	100
L-5-30MH-0-M	5.42	0.143	1.2	30	UV black	#8	1000
L-7-50MH-0-C	8.1	0.18	1.5	50	UV black	#10	100
L-7-50MH-0-M	8.1	0.18	1.5	50	UV black	#10	1000
L-7-50MH-9-C	8.1	0.18	1.5	50	Natural	#10	100
L-7-50MH-9-M	8.1	0.18	1.5	50	Natural	#10	1000
L-11-50MH-0-C	12.1	0.19	3	50	UV black	#10	100
L-11-50MH-0-D	12.1	0.19	3	50	UV black	#10	500
L-11-50MH-9-C	12.1	0.19	3	50	Natural	#10	100
L-11-50MH-9-D	12.1	0.19	3	50	Natural	#10	500

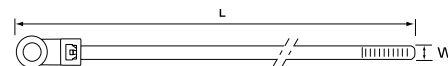
Tooling



ERG50

For use with 0.094 to 0.184 inch wide (18 to 50 lb.) ties.

Diagram



Catamount® cable ties

Cable tie mounting bases



Characteristics

- For use with 18–50 lb. cable ties
- Acrylic base can be repositioned initially
- Allow 24–72 hours of shaping for maximum performance with acrylic-based adhesives
- For rubber base, allow 15 minutes of shaping for maximum performance

Technical information

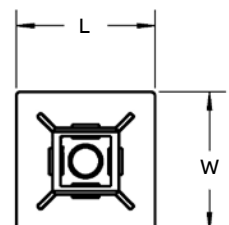
- Material: Nylon 6.6
- Certifications/standards: UL recognized
- Flammability rating: UL94V-2
- Mounting method: Adhesive/screw
- Apply at temperature: 18 °C (65 °F)
- Min./max operating temperature: 0 °C to 70 °C (32 °F to 158 °F)

Cable tie mounting bases

Cat. no.	Screw hole size	Mechanical strength (lb.)	Color	Qty.
¾" x ¾" size				
MPNY-750-9-C	#4	9	Natural	100
MYNY-750-0-C	#4	9	UV black	100
MPNY-750A-9-C	#4	9	Natural	100
MPNY-750A-0-C	#4	9	UV	100
1" x 1" size				
MPNY-1000-9-C	#6	30	Natural	100
MYNY-1000-0-C	#6	30	UV black	100
MPNY-1000A-9-C	#6	30	Natural	100
MPNY-1000A-0-C	#6	30	UV black	100

A acrylic / 18 to 50 lb. cable ties

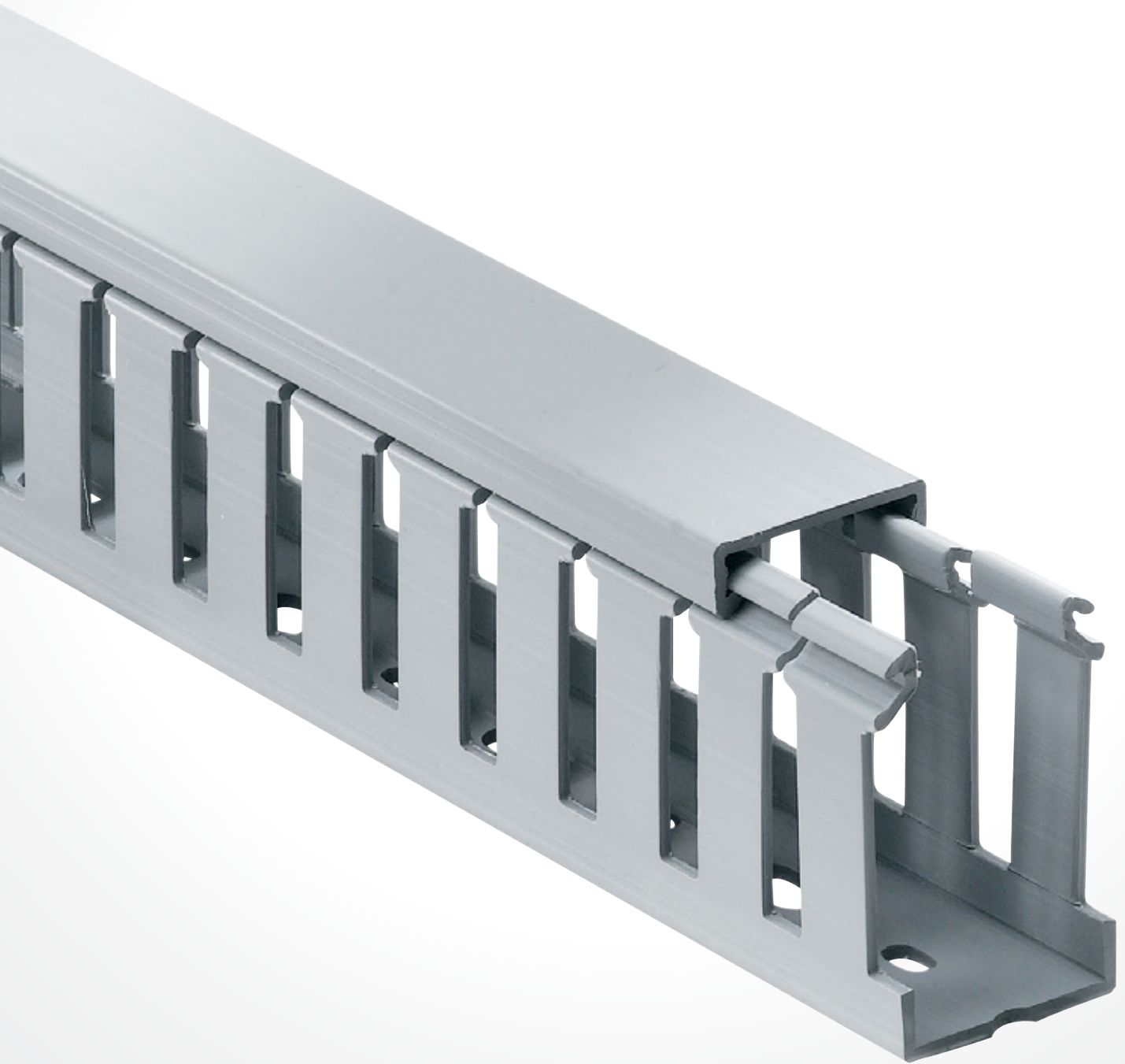
Diagram





—
02

Ty-Duct® wiring duct



Ty-Duct® wiring duct

Ty-Duct wiring duct	
Overview	18
Narrow slot wiring duct	22
Wide slot wiring duct	24
Solid wall wiring duct	26
Round hole wiring duct	28
Metric wiring duct — wide and narrow slot	30
Wiring duct accessories	33
Wiring duct tools	36
Wiring duct appendix — technical information	38
Wiring duct appendix — dimensional information	40
Wiring duct appendix — industry standards and certifications	46

Overview

The versatile configurations you need for routing and concealing wiring

ABB's innovative Ty-Duct® products offer a total solution for routing and concealing wiring in control panels. Many different sizes are available to accommodate anything from the smallest wall-mount panel to larger integrated systems. Impressive features are incorporated into all of our wiring duct solutions.

Ty-Duct wiring duct features

- Available in solid, wide slot, narrow slot and round hole versions to meet your capacity and flexibility needs
- Widths from 0.75" to 6" and depths from 1" to 5"
- Optional adhesive back for quick, hassle-free installation
- Complete selection of accessories and tools for installation
- Lead-free construction
- Lightweight halogen-free unit available for wide and narrow slot wiring duct (metric duct only)

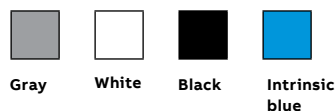
Ty-Duct wiring duct certifications

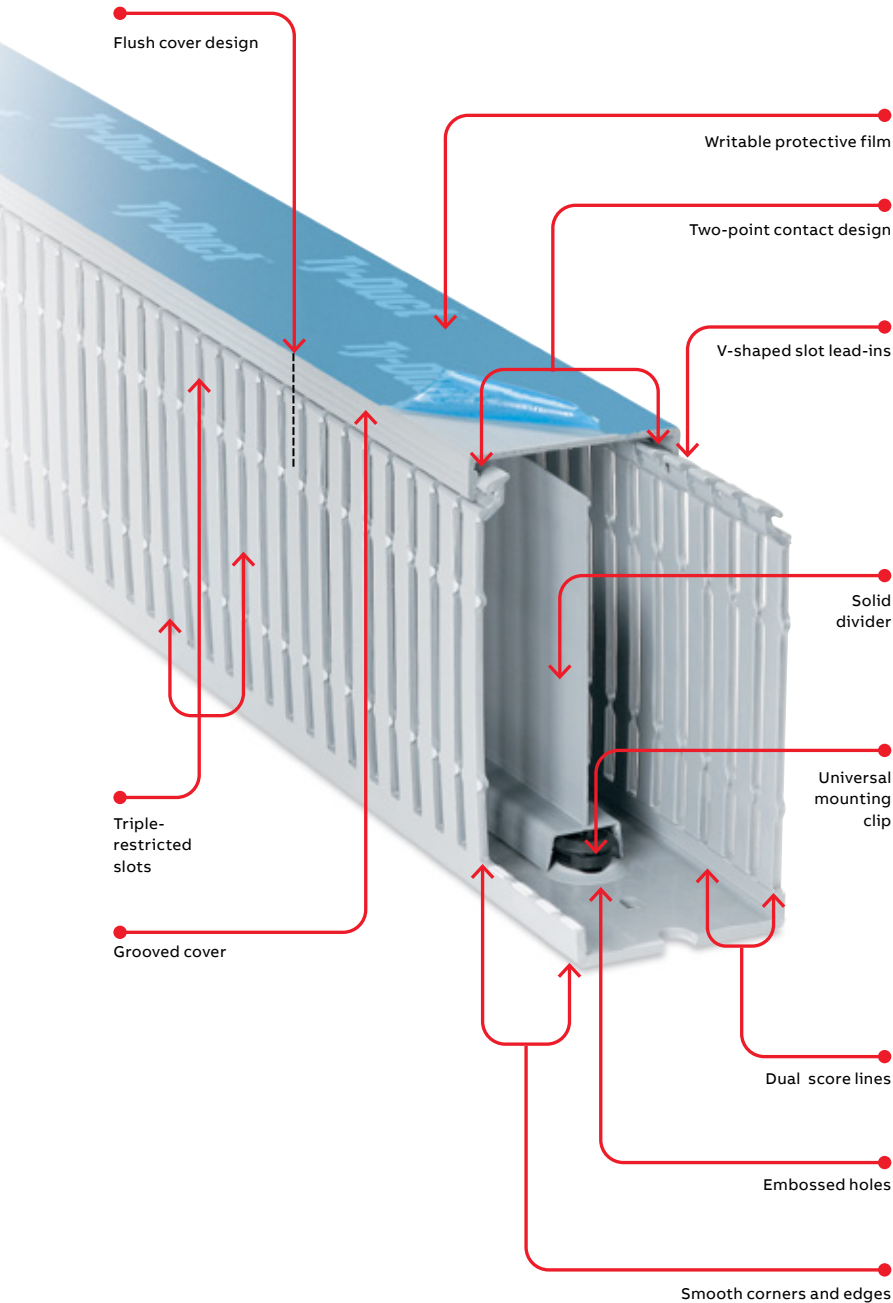
- UL recognized continuous-use temperature from -40 °C (-40 °F) up to 60 °C (140 °F)
- CSA certified file no. 110176
- UL flammability rating of UL94V-0
- CE compliant
- RoHS compliant

Metric duct certifications

- CSA certified file no. 077988
- RoHS compliant
- Conforms to EN50085-2-3 standard
- DIN standard mounting holes

Available in four colors



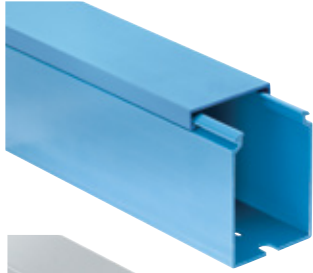


Ty-Duct® wiring duct advantages

- Two-point contact design enables the cover to be easily installed in the right place with less force
- Co-extruded cover ensures the cover will stay in place once installed
- Smooth corners and edges protect wires
- Flush cover design enables greater capacity and sits flush with duct side wall
- Triple-restricted slots speed installation while enabling better wire retaining in duct
- Score lines — upper score line allows fingers to be broken out without tools
- V-shaped slot lead-in funnels wires into slot for easier wire insertion
- Universal mounting clip secures into base to perform several tasks:
 - Enables divider to be snapped into base
 - Slots in the universal mounting clip allow cable ties to pass through to hold wire bundles in place
 - Two slot sizes on universal mounting clip accommodate traditional nylon cable ties or hook-and-loop fasteners
- Slotted and solid dividers accommodate various wiring applications
- Grooved cover provides better grip for removal and placement of cover onto base
- Writable protective film on covers protects against job site scratches and scuffs and enables temporary marking or labeling
- Embossed holes enable universal mounting clips to be installed, even after the duct has been riveted to the panel
- PVC construction is excellent for flame retardancy
- North American and DIN standard mounting holes

Overview

Wiring duct styles



Solid wall wiring duct

- Engineered to restrict wire access for greater security
- Available in improved flush sidewall and cover style for greater wire capacity



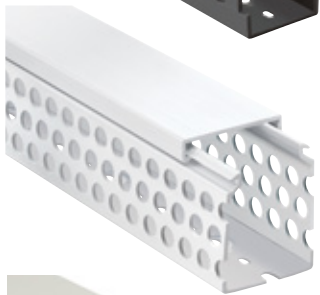
Wide slot wiring duct

- Wide fingers and slots increase rigidity and enable easy insertion of bundles
- Halogen-free version available



Narrow slot wiring duct

- Smaller, higher number of fingers for more concise harnessing
- Finger design restricts wire from slipping along the edge — creates two or three levels of wire service



Round hole wiring duct

- Multiple rows of holes retain wire at different heights and positions with or without cover
- Features maximum number of wire holes



Metric wiring duct

- Lead-free thermoplastic duct
- Available in wide and narrow slot styles
- Covers included with all duct orders

Overview


How to order

Ordering the Ty-Duct® products you need is as easy as 1, 2, 3.

After selecting the appropriate Ty-Duct solutions for your application, make sure you complete the following checklist.

For Ty-Duct wiring duct and covers:

1. Specify color
2. Indicate if you want the duct without mounting holes
3. Indicate if you want an adhesive-backed duct (not available with halogen-free duct)

 = space for color identifier:

- G = Gray 
- W = White 
- B = Black 
- I = Intrinsic blue 



2. To order duct without mounting holes, add suffix NM to catalog number. Example: TYD75X1WPG6NM is a 0.75" x 1" wide slot gray duct with no mounting holes.

Standard carton quantity

3. To order adhesive-backed duct, add suffix A to Catalog Number. Example: TYD75x15WPB6A is a 0.75" x 1.5" wide slot black duct with adhesive backing. Shelf life for adhesive is 1 year.

Cat. no.	Description	Nominal width x nominal height		Cover cat. no.	Duct std. ctn. qty.	Cover std. ctn. qty.	Length (ft.)
		Size (W x H)					
		In.	mm				
TYD75X1WPG6NM	0.75 x 1 wide slot duct	0.94 x 1.09	23.9 x 27.7	TYD75CPI6	120	120	6
TYD75X15WP[B]6A	0.75 x 1.5 Wide slot duct	0.94 x 1.56	23.9 x 39.6		120		
TYD75X2WR[I]6	0.75 x 2 wide slot duct	0.94 x 2.07	23.9 x 52.6		120		

SP = Solid
WP = Wide slot
NP = Narrow slot
RP = Round hole

1. Catalog number must be completed by adding suffix G for gray, W for white, I for intrinsic blue, B for black. Example: TYD75x2WPI6 is a 0.75" x 2" wide slot intrinsic blue duct. Cover color must be specified also.

Standard lengths are 6 feet.

For Ty-Duct dividers:



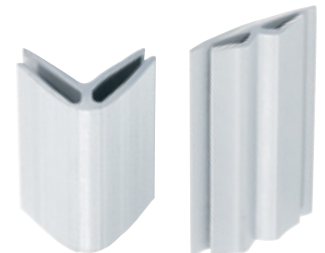
Catalog number must be completed by adding suffix SP for solid or WP for wide slot. Example: TY2DSPG6 is a 2" high solid wall gray divider.

Cat. no.	Description	Length (ft.)	Std. ctn. qty
TY2D[SP][G]6	2" High wall divider	6	120

Catalog number must be completed by adding suffix G for gray, W for white, I for intrinsic blue, B for black. Example: TY2DSPG6 is a 2" high solid wall gray divider.

For Ty-Duct corner and joining strips:

Corner strip sample shown below. Joining strips are ordered the same way.



Cat. no.	Description	Length (ft.)	Std. ctn. qty
TYCS[G]6	Corner strip	6	120

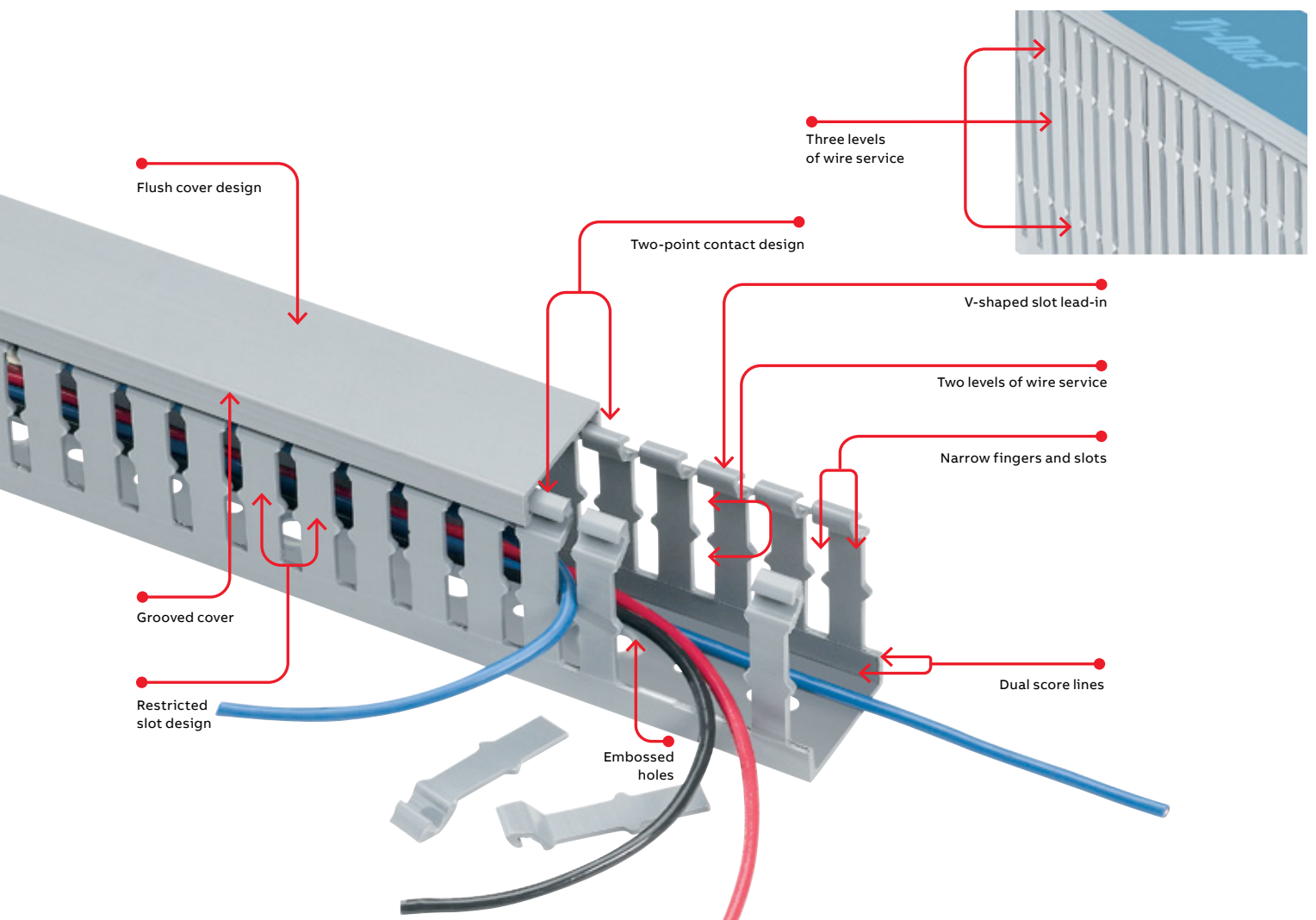
Catalog number must be completed by adding suffix G for gray, W for white, I for intrinsic blue, B for black. Example: TYCSG6 is a gray corner strip.

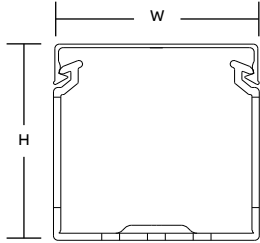
Narrow slot wiring duct

Designed to fit the spacing of high-density terminal blocks.

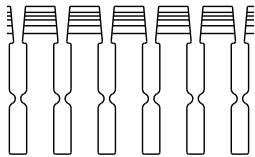
Narrow slot wiring duct — PVC

- Higher number of smaller fingers for more concise harnessing
- Non-slip cover does not slide easily and resists vibration
- Rounded edges protect hands and wires
- V-shaped slot lead-in enables easier and faster wire installation
- Restricted slot design makes sure that wires are held with or without the cover inserted
- Cover attaches flush with sidewall for finished look
- Dual score lines are designed to yield clean breakoffs at the base of the slot and the duct
- Finger design restricts wire from slipping along the edge; creates two or three levels of wire service (see page 40 for illustration)
- Integrated mounting holes — larger sizes include staggered holes for mounting flexibility (see page 40 for illustration)
- Constructed of flame-retardant PVC
- Lead-free construction

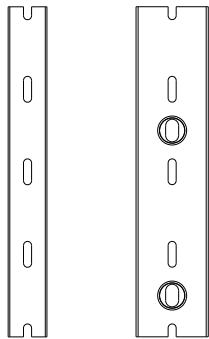




Front view with cover

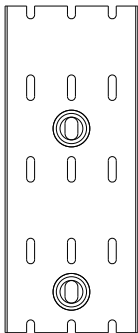


Side view



Pattern for 3/4" & 1"

Pattern for 1 1/2"



Pattern for 2", 2 1/2", 3", 4" & 6"

For a complete listing of narrow slot dimensional details, see page 40.



Cat. no.	Description (in.)	Size (W x H)		Cover cat. no.	Duct std. ctn. qty.	Cover std. ctn. qty.	Length (ft.)
		in.	mm				
TYD75X15NP[_]6	0.75 x 1.5 Narrow slot duct	0.94 x 1.60	23.9 x 39.6	TYD75CP[_]6	120	120	6
TYD1X1NP[_]6	1 x 1 Narrow slot duct	1.25 x 1.14	31.8 x 27.7	TYD1CP[_]6	120	60	6
TYD1X15NP[_]6	1 x 1.5 Narrow slot duct	1.25 x 1.60	31.8 x 39.9				
TYD1X2NP[_]6	1 x 2 Narrow slot duct	1.25 x 2.10	31.8 x 52.8				
TYD1X3NP[_]6	1 x 3 Narrow slot duct	1.25 x 3.05	31.8 x 77.7				
TYD1X4NP[_]6	1 x 4 Narrow slot duct	1.25 x 4.37	31.8 x 111.3		60		
TYD15X1NP[_]6	1.5 x 1 Narrow slot duct	1.75 x 1.14	44.5 x 27.7	TYD15CP[_]6	120	60	6
TYD15X15NP[_]6	1.5 x 1.5 Narrow slot duct	1.75 x 1.60	44.5 x 39.9				
TYD15X2NP[_]6	1.5 x 2 Narrow slot duct	1.75 x 2.10	44.5 x 52.8				
TYD15X3NP[_]6	1.5 x 3 Narrow slot duct	1.75 x 3.05	44.5 x 77.7				
TYD15X4NP[_]6	1.5 x 4 Narrow slot duct	1.75 x 4.37	44.5 x 111.3		60		
TYD2X1NP[_]6	2 x 1 Narrow slot duct	2.25 x 1.24	57.2 x 28.4	TYD2CP[_]6	120	60	6
TYD2X15NP[_]6	2 x 1.5 Narrow slot duct	2.25 x 1.70	57.2 x 40.4				
TYD2X2NP[_]6	2 x 2 Narrow slot duct	2.25 x 2.19	57.2 x 53.3				
TYD2X3NP[_]6	2 x 3 Narrow slot duct	2.25 x 3.14	57.2 x 78.2		60		
TYD2X4NP[_]6	2 x 4 Narrow slot duct	2.25 x 4.46	57.2 x 111.8				
TYD2X5NP[_]6	2 x 5 Narrow slot duct	2.25 x 5.15	57.2 x 129.3				
TYD25X2NP[_]6	2.5 x 2 Narrow slot duct	2.75 x 2.19	69.9 x 53.6	TYD25CP[_]6	120	60	6
TYD25X3NP[_]6	2.5 x 3 Narrow slot duct	2.75 x 3.14	69.9 x 78.2		60		
TYD25X4NP[_]6	2.5 x 4 Narrow slot duct	2.75 x 4.46	69.9 x 111.8				
TYD3X1NP[_]6	3 x 1 Narrow slot duct	3.25 x 1.24	82.6 x 29.0	TYD3CP[_]6	120	60	6
TYD3X2NP[_]6	3 x 2 Narrow slot duct	3.25 x 2.19	82.6 x 54.9		60		
TYD3X3NP[_]6	3 x 3 Narrow slot duct	3.25 x 3.14	82.6 x 79.8				
TYD3X4NP[_]6	3 x 4 Narrow slot duct	3.25 x 4.46	82.6 x 113.5				
TYD3X5NP[_]6	3 x 5 Narrow slot duct	3.25 x 5.15	82.6 x 130.6				
TYD4X2NP[_]6	4 x 2 Narrow slot duct	4.25 x 2.19	108.0 x 55.1	TYD4CP[_]6	60	30	6
TYD4X3NP[_]6	4 x 3 Narrow slot duct	4.25 x 3.14	108.0 x 80.0				
TYD4X4NP[_]6	4 x 4 Narrow slot duct	4.25 x 4.46	108.0 x 113.8		30		
TYD4X5NP[_]6	4 x 5 Narrow slot duct	4.25 x 5.15	108.0 x 130.8				

= space for color identifier:

- G = Gray
- W = White
- B = Black
- I = Intrinsic blue

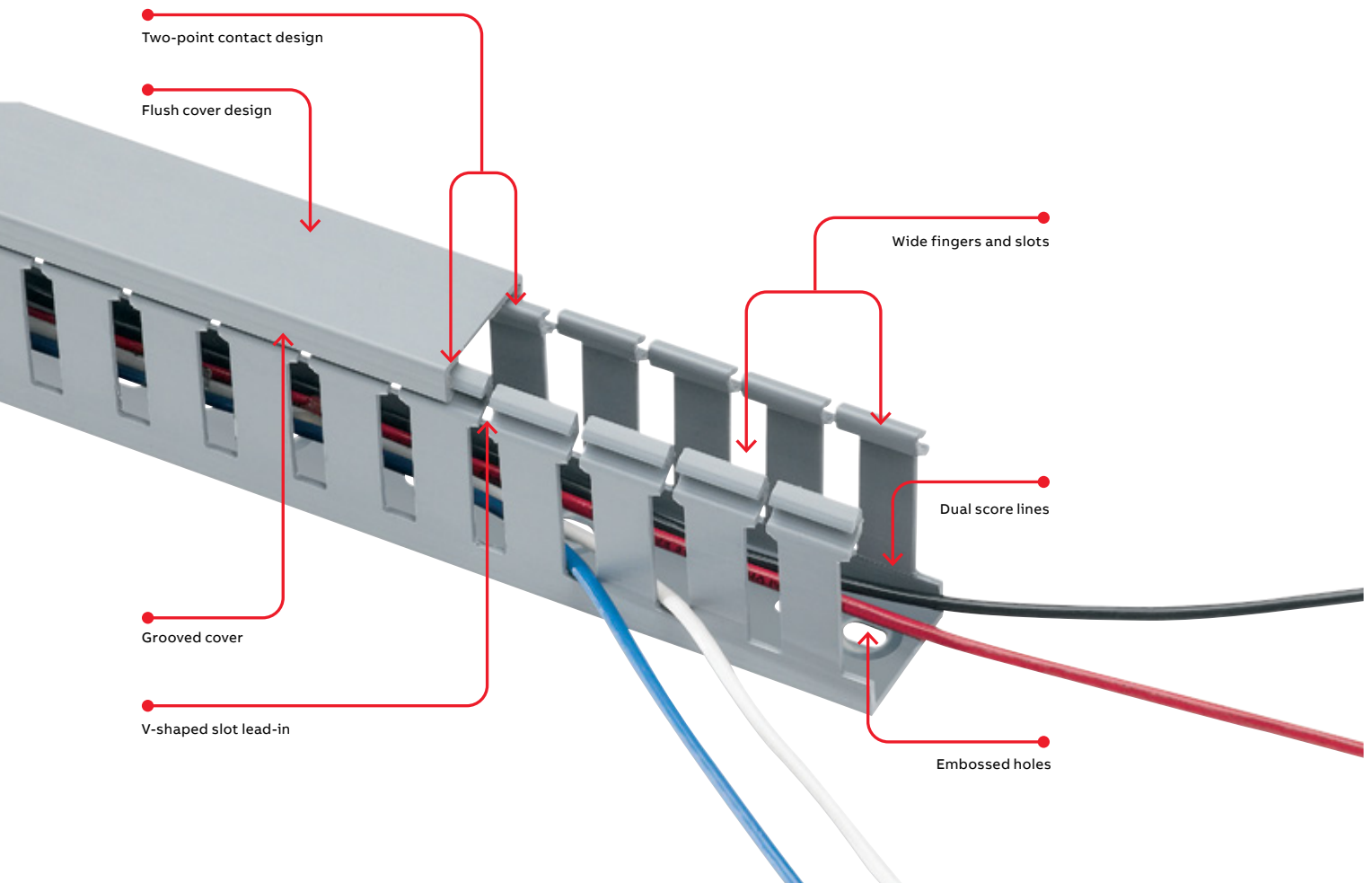
- Standard lengths are 6 feet.
- + Catalog number must be completed by adding suffix G for gray, W for white, I for intrinsic blue, B for black.
- Example: TYD75X15NPG6 is a 0.75" x 1" wide slot gray duct.
- To order duct without mounting holes, add suffix NM to catalog number.
- Example: TYD75X15NPG6NM is a 0.75" x 1" wide slot gray duct with no mounting holes.
- To order adhesive-backed duct, add suffix A to catalog number.
- Example: TYD75X15NPG6A is a 0.75" x 1" wide slot gray duct with adhesive backing. Shelf life for adhesive is 1 year.
- PVC vinyl duct is CSA certified, UL recognized and CE compliant.

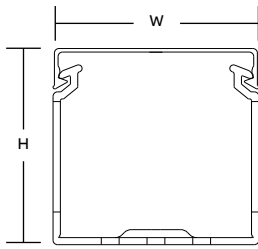
Wide slot wiring duct

Greater sidewall rigidity with increased versatility.

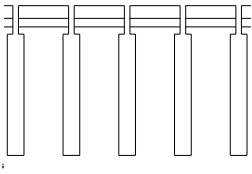
Wide slot wiring duct — PVC

- Wide fingers and slots increase rigidity and enable easier insertion of wiring bundles
- Non-slip cover does not slide easily and resists vibration
- Rounded edges keep hands and wires free of abrasion
- Dual score lines are designed to yield clean breakoffs at the base of the slot and the duct
- Restricted slot design ensures that wires are held with or without the cover inserted
- Cover attaches flush with sidewall for finished look
- Improved flush sidewall and cover style for greater wire capacity
- Versatile North American and DIN standard mounting holes enable use of the same duct for multiple applications
- Constructed of flame-retardant PVC
- Integrated mounting holes — larger sizes include staggered holes for mounting flexibility (see page 41 for illustration)
- Lead-free construction

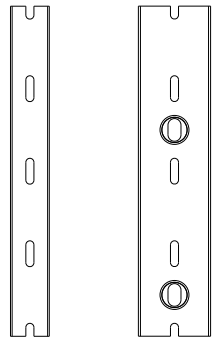




Front view with cover

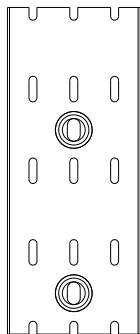


Side view



Pattern for 3/4" & 1"

Pattern for 1 1/2"



Pattern for 2", 2 1/2", 3", 4" & 6"

For a complete listing of wide slot dimensional details, see page 41.



Cat. no.	Description	Size (W x H)		Cover cat. no.	Duct std. ctn. qty.	Cover std. ctn. qty.	Length (ft.)
		in.	mm				
TYD75X1WP[_]6	0.75 x 1 Wide slot duct	0.94 x 1.14	23.9 x 27.7	TYD75CP[_]6	120	120	6
TYD75X15WP[_]6	0.75 x 1.5 Wide slot duct	0.94 x 1.60	23.9 x 39.6				
TYD75X2WP[_]6	0.75 x 2 Wide slot duct	0.94 x 2.10	23.9 x 52.6				
TYD1X1WP[_]6	1 x 1 Wide slot duct	1.25 x 1.14	31.8 x 27.7	TYD1CP[_]6	120	60	6
TYD1X15WP[_]6	1 x 1.5 Wide slot duct	1.25 x 1.60	31.8 x 39.9				
TYD1X2WP[_]6	1 x 2 Wide slot duct	1.25 x 2.10	31.8 x 52.8				
TYD1X3WP[_]6	1 x 3 Wide slot duct	1.25 x 3.05	31.8 x 77.7				
TYD1X4WP[_]6	1 x 4 Wide slot duct	1.25 x 4.37	31.8 x 111.3		60		
TYD15X1WP[_]6	1.5 x 1 Wide slot duct	1.75 x 1.14	44.5 x 27.7	TYD15CP[_]6	120	60	6
TYD15X15WP[_]6	1.5 x 1.5 Wide slot duct	1.75 x 1.60	44.5 x 39.9				
TYD15X2WP[_]6	1.5 x 2 Wide slot duct	1.75 x 2.10	44.5 x 52.8				
TYD15X3WP[_]6	1.5 x 3 Wide slot duct	1.75 x 3.05	44.5 x 77.7				
TYD15X4WP[_]6	1.5 x 4 Wide slot duct	1.75 x 4.37	44.5 x 111.3		60		
TYD2X1WP[_]6	2 x 1 Wide slot duct	2.25 x 1.24	57.2 x 28.4	TYD2CP[_]6	120	60	6
TYD2X15WP[_]6	2 x 1.5 Wide slot duct	2.25 x 1.70	57.2 x 40.4				
TYD2X2WP[_]6	2 x 2 Wide slot duct	2.25 x 2.19	57.2 x 53.3				
TYD2X3WP[_]6	2 x 3 Wide slot duct	2.25 x 3.14	57.2 x 78.2		60		
TYD2X4WP[_]6	2 x 4 Wide slot duct	2.25 x 4.46	57.2 x 111.8				
TYD2X5WP[_]6	2 x 5 Wide slot duct	2.25 x 5.15	57.2 x 129.3				
TYD25X2WP[_]6	2.5 x 2 Wide slot duct	2.75 x 2.19	69.9 x 53.6	TYD25CP[_]6	120	60	6
TYD25X3WP[_]6	2.5 x 3 Wide slot duct	2.75 x 3.14	69.9 x 78.2		60		
TYD25X4WP[_]6	2.5 x 4 Wide slot duct	2.75 x 4.46	69.9 x 111.8				
TYD3X1WP[_]6	3 x 1 Wide slot duct	3.25 x 1.24	82.6 x 29.0	TYD3CP[_]6	120	60	6
TYD3X2WP[_]6	3 x 2 Wide slot duct	3.25 x 2.19	82.6 x 54.9		60		
TYD3X3WP[_]6	3 x 3 Wide slot duct	3.25 x 3.14	82.6 x 79.8				
TYD3X4WP[_]6	3 x 4 Wide slot duct	3.25 x 4.46	82.6 x 113.5				
TYD3X5WP[_]6	3 x 5 Wide slot duct	3.25 x 5.15	82.6 x 130.6				
TYD4X15WP[_]6	4 x 1.5 Wide slot duct	4.25 x 1.70	108.0 x 42.4	TYD4CP[_]6	60	30	6
TYD4X2WP[_]6	4 x 2 Wide slot duct	4.25 x 2.19	108.0 x 55.1				
TYD4X3WP[_]6	4 x 3 Wide slot duct	4.25 x 3.14	108.0 x 80.0				
TYD4X4WP[_]6	4 x 4 Wide slot duct	4.25 x 4.46	108.0 x 113.8		30		
TYD4X5WP[_]6	4 x 5 Wide slot duct	4.25 x 5.15	108.0 x 130.8				
TYD6X4WP[_]6	6 x 4 Wide slot duct	6.25 x 4.46	158.8 x 114.0	TYD6CP[_]6	30	30	6
TY2X1WHW6	2 x 1 Wide slot halogen-free duct, white	2.25 x 1.046	57.15 x 26.57	TY2CHW6	120	60	6
TY2X2WHW6	2 x 2 Wide slot halogen-free duct, white	2.25 x 2.034	57.15 x 51.66				
TY2X3WHW6	2 x 3 Wide slot halogen-free duct, white	2.25 x 3.000	57.15 x 76.20		60		
TY2X4WHW6	2 x 4 Wide slot halogen-free duct, white	2.25 x 4.332	57.15 x 110.03				

= space for color identifier:

- G = Gray
- W = White
- B = Black
- I = Intrinsic blue

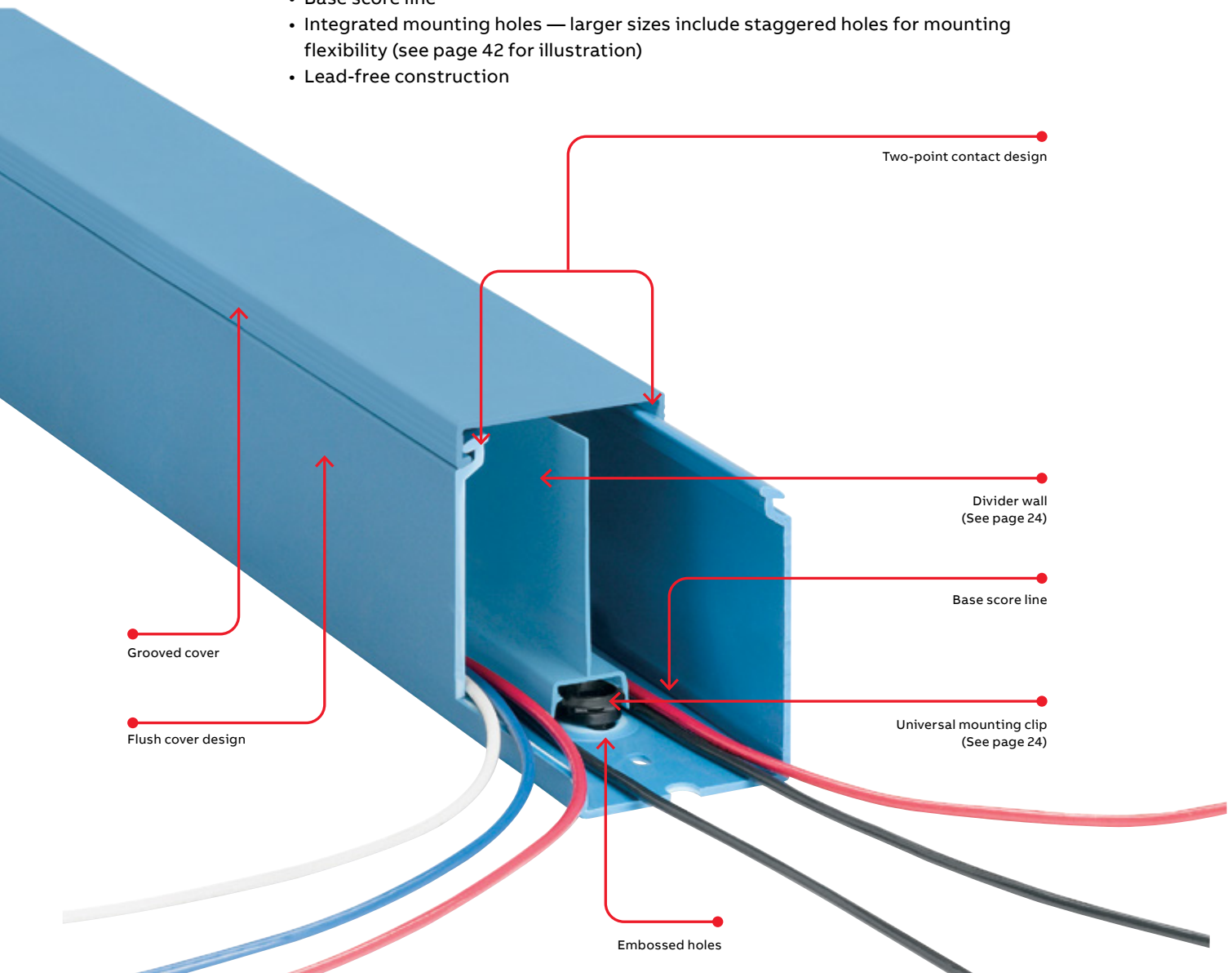
• Standard lengths are 6 feet.
 + Catalog number must be completed by adding suffix G for gray, W for white, I for intrinsic blue, B for black.
 Example: TYD75X1WPG6 is a 0.75" x 1" wide slot gray duct.
 To order duct without mounting holes, add suffix NM to catalog number.
 Example: TYD75X1WPGNM6 is a 0.75" x 1" wide slot gray duct with no mounting holes.
 To order adhesive-backed duct, add suffix A to catalog number.
 Example: TYD75X1WPGA6 is a 0.75" x 1" wide slot gray duct with adhesive backing. Shelf life for adhesive is 1 year.
 PVC vinyl duct is CSA certified, UL recognized and CE compliant.

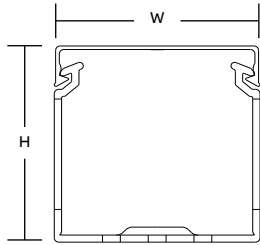
Solid wall wiring duct

Flame-retardant PVC offers the protection you need.

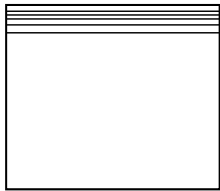
Solid wall duct — PVC

- Engineered to restrict wire access
- Constructed of flame-retardant PVC
- Non-slip cover does not slide easily and resists vibration
- Cover attaches flush with sidewall for finished look
- Improved flush sidewall and cover style for greater wire capacity
- Base score line
- Integrated mounting holes — larger sizes include staggered holes for mounting flexibility (see page 42 for illustration)
- Lead-free construction

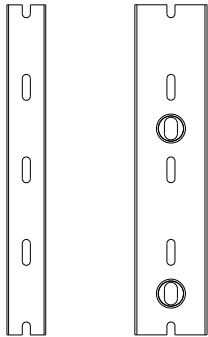




Front view with cover

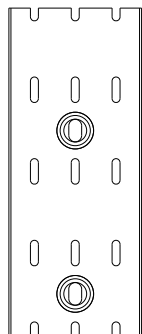


Side view



Pattern for 3/4" & 1"

Pattern for 1 1/2"



Pattern for 2", 2 1/2", 3", 4" & 6"

For a complete listing of solid wall dimensional details, see page 42.



Cat. no.	Description (in.)	Size (W x H)		Cover cat. no.	Duct std. ctn. qty.	Cover std. ctn. qty.	Length (ft.)
		in.	mm				
TYD75X1SP[_]6	0.75 x 1 Solid wall duct	0.94 x 1.14	23.9 x 27.7	TYD75CP[_]6	120	60	6
TYD75X15SP[_]6	0.75 x 1.5 Solid wall duct	0.94 x 1.60	23.9 x 39.6				
TYD75X2SP[_]6	0.75 x 2 Solid wall duct	0.94 x 2.10	23.9 x 52.6				
TYD1X1SP[_]6	1 x 1 Solid wall duct	1.25 x 1.14	31.8 x 27.7	TYD1CP[_]6	120	60	6
TYD1X15SP[_]6	1 x 1.5 Solid wall duct	1.25 x 1.60	31.8 x 39.9				
TYD1X2SP[_]6	1 x 2 Solid wall duct	1.25 x 2.10	31.8 x 52.8				
TYD1X3SP[_]6	1 x 3 Solid wall duct	1.25 x 3.05	31.8 x 77.7				
TYD1X4SP[_]6	1 x 4 Solid wall duct	1.25 x 4.37	31.8 x 111.3		60		
TYD15X1SP[_]6	1.5 x 1 Solid wall duct	1.75 x 1.14	44.5 x 27.7	TYD15CP[_]6	120	60	6
TYD15X15SP[_]6	1.5 x 1.5 Solid wall duct	1.75 x 1.60	44.5 x 39.9				
TYD15X2SP[_]6	1.5 x 2 Solid wall duct	1.75 x 2.10	44.5 x 52.8				
TYD15X3SP[_]6	1.5 x 3 Solid wall duct	1.75 x 3.05	44.5 x 77.7				
TYD15X4SP[_]6	1.5 x 4 Solid wall duct	1.75 x 4.37	44.5 x 111.3		60		
TYD2X1SP[_]6	2 x 1 Solid wall duct	2.25 x 1.24	57.2 x 28.4	TYD2CP[_]6	120	60	6
TYD2X15SP[_]6	2 x 1.5 Solid wall duct	2.25 x 1.70	57.2 x 40.4				
TYD2X2SP[_]6	2 x 2 Solid wall duct	2.25 x 2.19	57.2 x 53.3				
TYD2X3SP[_]6	2 x 3 Solid wall duct	2.25 x 3.14	57.2 x 78.2		60		
TYD2X4SP[_]6	2 x 4 Solid wall duct	2.25 x 4.46	57.2 x 111.8				
TYD2X5SP[_]6	2 x 5 Solid wall duct	2.25 x 5.15	57.2 x 129.3				
TYD25X2SP[_]6	2.5 x 2 Solid wall duct	2.75 x 2.19	69.9 x 53.6	TYD25CP[_]6	120	60	6
TYD25X3SP[_]6	2.5 x 3 Solid wall duct	2.75 x 3.14	69.9 x 78.2		60		
TYD25X4SP[_]6	2.5 x 4 Solid wall duct	2.75 x 4.46	69.9 x 111.8				
TYD3X1SP[_]6	3 x 1 Solid wall duct	3.25 x 1.24	82.6 x 29.0	TYD3CP[_]6	120	60	6
TYD3X2SP[_]6	3 x 2 Solid wall duct	3.25 x 2.19	82.6 x 54.9		60		
TYD3X3SP[_]6	3 x 3 Solid wall duct	3.25 x 3.14	82.6 x 79.8				
TYD3X4SP[_]6	3 x 4 Solid wall duct	3.25 x 4.46	82.6 x 113.5				
TYD3X5SP[_]6	3 x 5 Solid wall duct	3.25 x 5.15	82.6 x 130.6				
TYD4X15SP[_]6	4 x 1.5 Solid wall duct	4.25 x 1.70	108.0 x 42.4	TYD4CP[_]6	60	30	6
TYD4X2SP[_]6	4 x 2 Solid wall duct	4.25 x 2.19	108.0 x 55.1				
TYD4X3SP[_]6	4 x 3 Solid wall duct	4.25 x 3.14	108.0 x 80.0				
TYD4X4SP[_]6	4 x 4 Solid wall duct	4.25 x 4.46	108.0 x 113.8		30		
TYD4X5SP[_]6	4 x 5 Solid wall duct	4.25 x 5.15	108.0 x 130.8				
TYD6X4SP[_]6	6 x 4 Solid wall duct	6.25 x 4.46	158.8 x 114.0	TYD6CP[_]6	30	30	6

[] = space for color identifier:

- G = Gray
- W = White
- B = Black
- I = Intrinsic blue

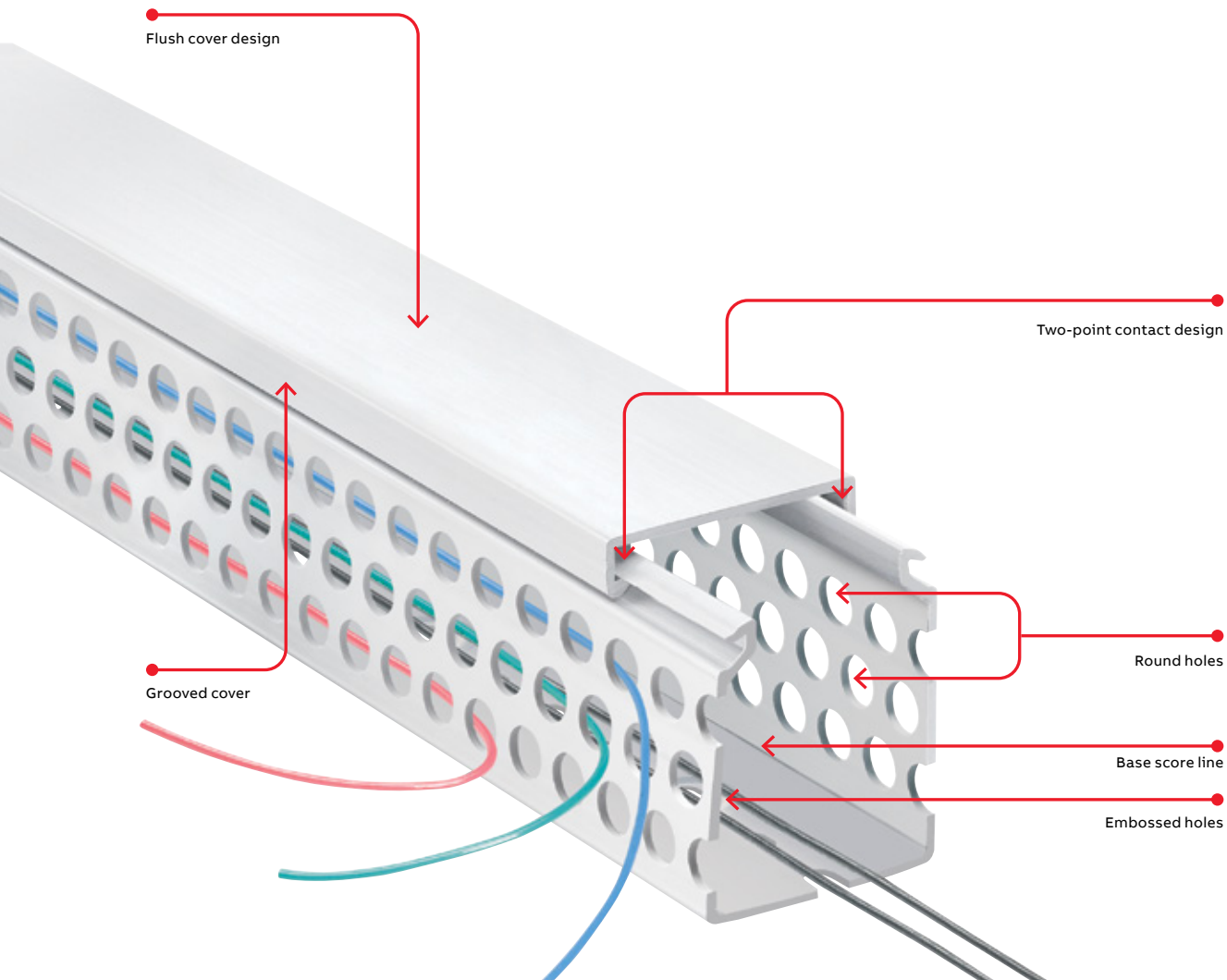
- Standard lengths are 6 feet.
- + Catalog number must be completed by adding suffix G for gray, W for white, I for intrinsic blue, B for black.
- Example: TYD75X1SPG6 is a 0.75" x 1" solid wall gray duct.
- To order duct without mounting holes, add suffix NM to catalog number.
- Example: TYD75X1SPGNM6 is a 0.75" x 1" solid wall gray duct with no mounting holes.
- To order adhesive-backed duct, add suffix A to catalog number.
- Example: TYD75X1SPGA6 is a 0.75" x 1" solid wall gray duct with adhesive backing. Shelf life for adhesive is 1 year.
- PVC vinyl duct is CSA certified, UL recognized and CE compliant.

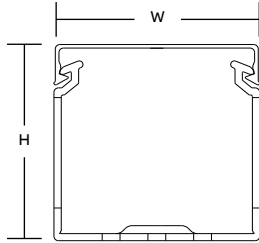
Round hole wiring duct

Holes retain and support wires at different heights.

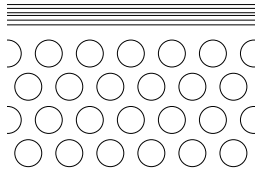
Round hole wiring duct — PVC

- Multiple rows of holes retain wire at different heights and positions with or without the cover
- Features maximum number of wire holes
- Greater wall rigidity than open slot duct
- Non-slip cover does not slide easily and resists vibration
- Rounded edges protect hands and wires
- Base score line enables sidewall section to be removed
- Cover attaches flush with sidewall for finished look
- Constructed of flame-retardant PVC
- Integrated mounting holes — larger sizes include staggered holes for mounting flexibility (see page 43 for illustration)
- Lead-free construction

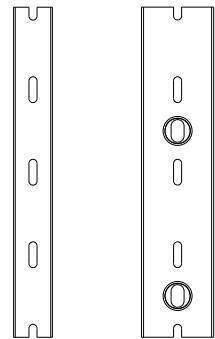




Front view with cover

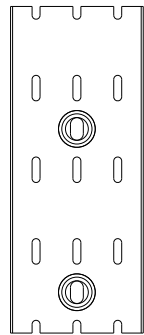


Side view



Pattern for 3/4" & 1"

Pattern for 1 1/2"



Pattern for 2", 2 1/2", 3", 4" & 6"

For a complete listing of round hole dimensional details, see page 43.



Cat. no.	Description (in.)	Size (W x H)		Cover cat. no.	Duct std. ctn. qty.	Cover std. ctn. qty.	Length (ft.)
		in.	mm				
TYD1X15RP[_]6	1 x 1.5 Round hole duct	1.75 x 1.60	44.5 x 39.9	TYD1CP[_]6	120	60	6
TYD1X2RP[_]6	1 x 2 Round hole duct	1.25 x 2.10	31.8 x 52.8				
TYD1X3RP[_]6	1 x 3 Round hole duct	1.25 x 3.05	31.8 x 77.7				
TYD1X4RP[_]6	1 x 4 Round hole duct	1.25 x 4.37	31.8 x 111.3		60		
TYD15X15RP[_]6	1.5 x 1.5 Round hole duct	1.75 x 1.60	44.5 x 39.9	TYD15CP[_]6	120	60	6
TYD15X2RP[_]6	1.5 x 2 Round hole duct	1.75 x 2.10	44.5 x 52.8				
TYD15X3RP[_]6	1.5 x 3 Round hole duct	1.75 x 3.05	44.5 x 77.7				
TYD15X4RP[_]6	1.5 x 4 Round hole duct	1.75 x 4.37	44.5 x 111.3		60		
TYD2X15RP[_]6	2 x 1.5 Round hole duct	2.25 x 1.70	57.2 x 40.4	TYD2CP[_]6	120	60	6
TYD2X2RP[_]6	2 x 2 Round hole duct	2.25 x 2.19	57.2 x 53.3				
TYD2X3RP[_]6	2 x 3 Round hole duct	2.25 x 3.14	57.2 x 78.2		60		
TYD2X4RP[_]6	2 x 4 Round hole duct	2.25 x 4.46	57.2 x 111.8				
TYD3X2RP[_]6	3 x 2 Round hole duct	3.25 x 2.19	82.6 x 54.9	TYD3CP[_]6	60	60	6
TYD3X3RP[_]6	3 x 3 Round hole duct	3.25 x 3.14	82.6 x 79.8				
TYD3X4RP[_]6	3 x 4 Round hole duct	3.25 x 4.46	82.6 x 113.5				
TYD4X15RP[_]6	4 x 1.5 Round hole duct	4.25 x 1.70	108.0 x 42.4	TYD4CP[_]6	60	30	6
TYD4X2RP[_]6	4 x 2 Round hole duct	4.25 x 2.19	108.0 x 55.1				
TYD4X3RP[_]6	4 x 3 Round hole duct	4.25 x 3.14	108.0 x 80.0				
TYD4X4RP[_]6	4 x 4 Round hole duct	4.25 x 4.46	108.0 x 113.8		30		

[] = space for color identifier:

G = Gray



W = White



B = Black



I = Intrinsic blue



• Standard lengths are 6 feet.

+ Catalog number must be completed by adding suffix G for gray, W for white, I for intrinsic blue, B for black.

Example: TYD1X15RPG6 is a 1" x 1.5" round hole gray duct.

To order duct without mounting holes, add suffix NM to catalog number.

Example: TYD1X15RPG6NM is a 1" x 1.5" round hole gray duct with no mounting holes.

To order adhesive-backed duct, add suffix A to catalog number.

Example: TYD1X15RPG6A is a 1" x 1.5" round hole gray duct with adhesive backing.

PVC vinyl duct is CSA certified, UL recognized and CE compliant.

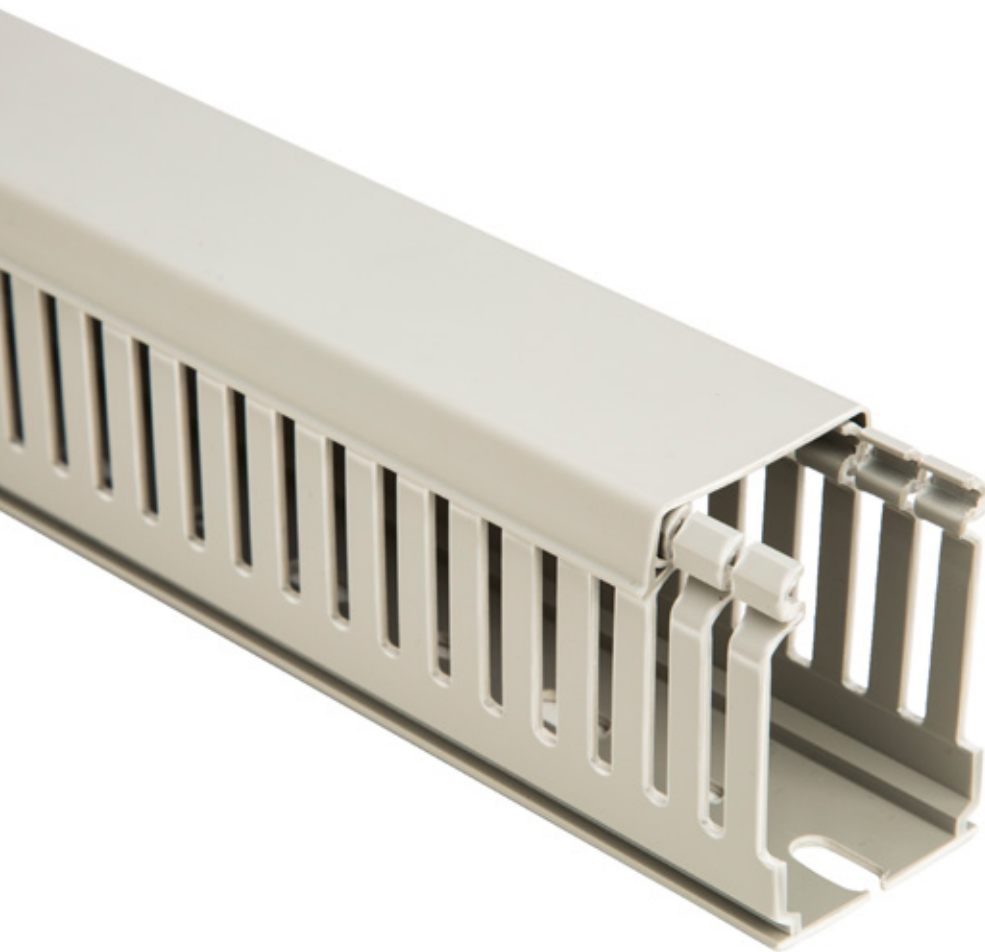
Metric wiring duct

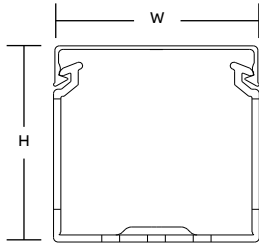
Wide and narrow slot

Lead-free thermoplastic duct

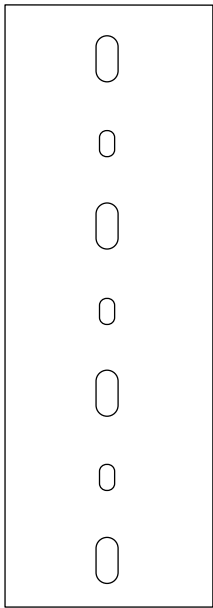
With 8–12 / 4–6 mm slots

- Shock-resistant and self-extinguishing thermoplastic in conformity with UL94V-0 standard, resistant to abnormal heat and fire up to 960 °C (glow-wire test) in conformity with IEC 60695-2-1 standard
- Minimum storage/transport temperature -5 °C
- Minimum installation/use temperature -15 °C
- DIN standard mounting holes (refer to page 44–45 for illustration)
- Maximum use temperature 60 °C
- Standard length 2 meters
- Color RAL 7030 gray
- Conforms to EN 50085-2-3 standard
- Conforms to RoHS directive
- Lead-free
- Certifications: CSA – File no. 077988, IMQ, UL, RINA

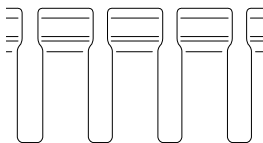




Front view with cover



Bottom view



Side view

Wide slot wiring duct

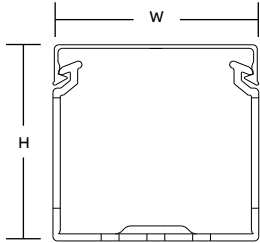
For a complete listing of wide slot dimensional details, see page 44.

Cat. no.	Description (mm)	Size (W x H)		Cover cat. no.*	Duct std. ctn. qty. (meters)	Length (meters)
		in.	mm			
05019	15 x 17 Gray wide finger wiring duct	0.59 x 0.67	15 x 17	05300	46	2
05033	25 x 30 Gray wide finger wiring duct	0.98 x 1.18	25 x 30	05302	58	2
05035	40 x 30 Gray wide finger wiring duct	1.57 x 1.18	40 x 30	05304	38	2
05037	60 x 30 Gray wide finger wiring duct	2.36 x 1.18	60 x 30	05306	52	2
05043	25 x 40 Gray wide finger wiring duct	0.98 x 1.57	25 x 40	05302	48	2
05045	40 x 40 Gray wide finger wiring duct	1.57 x 1.57	40 x 40	05304	30	2
05047	60 x 40 Gray wide finger wiring duct	2.36 x 1.57	60 x 40	05306	40	2
05049	80 x 40 Gray wide finger wiring duct	3.15 x 1.57	80 x 40	05308	32	2
05051	100 x 40 Gray wide finger wiring duct	3.94 x 1.57	100 x 40	05310	24	2
05053	120 x 40 Gray wide finger wiring duct	4.72 x 1.57	120 x 40	05312	20	2
05063	25 x 60 Gray wide finger wiring duct	0.98 x 2.36	25 x 60	05302	34	2
05065	40 x 60 Gray wide finger wiring duct	1.57 x 2.36	40 x 60	05304	22	2
05067	60 x 60 Gray wide finger wiring duct	2.36 x 2.36	60 x 60	05306	32	2
05069	80 x 60 Gray wide finger wiring duct	3.15 x 2.36	80 x 60	05308	24	2
05071	100 x 60 Gray wide finger wiring duct	3.94 x 2.36	100 x 60	05310	20	2
05073	120 x 60 Gray wide finger wiring duct	4.72 x 2.36	120 x 60	05312	14	2
05083	25 x 80 Gray wide finger wiring duct	0.98 x 3.15	25 x 80	05302	28	2
05085	40 x 80 Gray wide finger wiring duct	1.57 x 3.15	40 x 80	05304	36	2
05087	60 x 80 Gray wide finger wiring duct	2.36 x 3.15	60 x 80	05306	24	2
05089	80 x 80 Gray wide finger wiring duct	3.15 x 3.15	80 x 80	05308	16	2
05091	100 x 80 Gray wide finger wiring duct	3.94 x 3.15	100 x 80	05310	16	2
05093	120 x 80 Gray wide finger wiring duct	4.72 x 3.15	120 x 80	05312	12	2
05094	25 x 100 Gray wide finger wiring duct	0.98 x 3.94	25 x 100	05302	20	2
05095	40 x 100 Gray wide finger wiring duct	1.57 x 3.94	40 x 100	05304	28	2
05096	60 x 100 Gray wide finger wiring duct	2.36 x 3.94	60 x 100	05306	20	2
05097	80 x 100 Gray wide finger wiring duct	3.15 x 3.94	80 x 100	05308	14	2
05098	100 x 100 Gray wide finger wiring duct	3.94 x 3.94	100 x 100	05310	8	2
05099	150 x 100 Gray wide finger wiring duct	5.91 x 3.94	150 x 100	05314	8	2

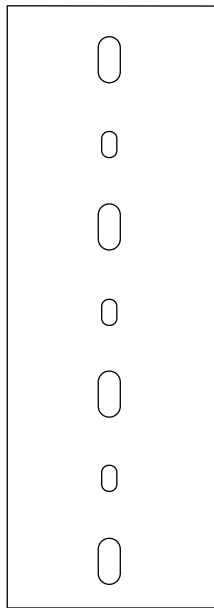
*Covers are included with all duct orders.

Metric wiring duct

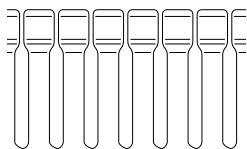
Wide and narrow slot



Front view with cover



Bottom view



Side view

Narrow slot wiring duct

For a complete listing of narrow slot dimensional details, see page 45.

Cat. no.	Description (mm)	Size (W x H)		Cover cat. no.*	Duct std. ctn. qty. (meters)	Length (meters)
		in.	mm			
05119	15 x 17 Gray narrow finger wiring duct	0.59 x 0.67	15 x 17	05300	46	2
05133	25 x 30 Gray narrow finger wiring duct	0.98 x 1.18	25 x 30	05302	58	2
05135	40 x 30 Gray narrow finger wiring duct	1.57 x 1.18	40 x 30	05304	38	2
05137	60 x 30 Gray narrow finger wiring duct	2.36 x 1.18	60 x 30	05306	52	2
05143	25 x 40 Gray narrow finger wiring duct	0.98 x 1.57	25 x 40	05302	48	2
05145	40 x 40 Gray narrow finger wiring duct	1.57 x 1.57	40 x 40	05304	30	2
05147	60 x 40 Gray narrow finger wiring duct	2.36 x 1.57	60 x 40	05306	40	2
05149	80 x 40 Gray narrow finger wiring duct	3.15 x 1.57	80 x 40	05308	32	2
05151	100 x 40 Gray narrow finger wiring duct	3.94 x 1.57	100 x 40	05310	24	2
05153	120 x 40 Gray narrow finger wiring duct	4.72 x 1.57	120 x 40	05312	20	2
05163	25 x 60 Gray narrow finger wiring duct	0.98 x 2.36	25 x 60	05302	34	2
05165	40 x 60 Gray narrow finger wiring duct	1.57 x 2.36	40 x 60	05304	22	2
05167	60 x 60 Gray narrow finger wiring duct	2.36 x 2.36	60 x 60	05306	32	2
05169	80 x 60 Gray narrow finger wiring duct	3.15 x 2.36	80 x 60	05308	24	2
05171	100 x 60 Gray narrow finger wiring duct	3.94 x 2.36	100 x 60	05310	20	2
05173	120 x 60 Gray narrow finger wiring duct	4.72 x 2.36	120 x 60	05312	14	2
05183	25 x 80 Gray narrow finger wiring duct	0.98 x 3.15	25 x 80	05302	28	2
05185	40 x 80 Gray narrow finger wiring duct	1.57 x 3.15	40 x 80	05304	36	2
05187	60 x 80 Gray narrow finger wiring duct	2.36 x 3.15	60 x 80	05306	24	2
05189	80 x 80 Gray narrow finger wiring duct	3.15 x 3.15	80 x 80	05308	16	2
05191	100 x 80 Gray narrow finger wiring duct	3.94 x 3.15	100 x 80	05310	16	2
05193	120 x 80 Gray narrow finger wiring duct	4.72 x 3.15	120 x 80	05312	12	2
05194	25 x 100 Gray narrow finger wiring duct	0.98 x 3.94	25 x 100	05302	20	2
05195	40 x 100 Gray narrow finger wiring duct	1.57 x 3.94	40 x 100	05304	28	2
05196	60 x 100 Gray narrow finger wiring duct	2.36 x 3.94	60 x 100	05306	20	2
05197	80 x 100 Gray narrow finger wiring duct	3.15 x 3.94	80 x 100	05308	14	2
05198	100 x 100 Gray narrow finger wiring duct	3.94 x 3.94	100 x 100	05310	8	2
05199	150 x 100 Gray narrow finger wiring duct	5.91 x 3.94	150 x 100	05314	8	2

*Covers are included with all duct orders.

Replacement covers for wiring duct

Cat. no.	Description	Size (mm)	Length / pack qty. (meters)
05300	15 mm wiring duct cover	15	2 / 200
05302	25 mm wiring duct cover	25	2 / 60
05304	40 mm wiring duct cover	40	2 / 40
05306	60 mm wiring duct cover	60	2 / 24
05308	80 mm wiring duct cover	80	2 / 16
05310	100 mm wiring duct cover	100	2 / 48
05312	120 mm wiring duct cover	120	2 / 36
05314	150 mm wiring duct cover	150	2 / 28

Wiring duct accessories


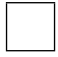


02

Trust ABB for all your wiring accessories

Accessories include:

- Divider walls, enabling multiple channels to be created within a duct channel
- Universal mounting clips that secure channels and wires
- Corner strips that keep corners rigid at tee junctions when used for control panel applications
- Joining strips to unite sections of duct and keep the wall rigid
- Plastic rivets for securing ducts quickly and easily

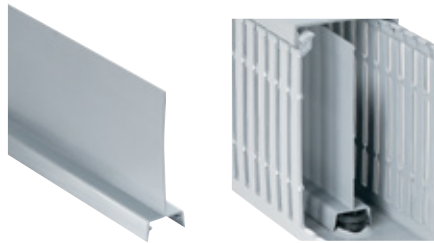
 = space for color identifier:

- G = Gray 
- W = White 
- B = Black 
- I = Intrinsic blue 

Divider wall

Create multiple channels inside wiring ducts.

- Separates high and low voltage to reduce shortages and interference
- Mount inside any Ty-Duct PVC wiring duct using universal mounting clips
- Score lines enable sections to be removed
- Solid and wide slotted style



Cat. no.	Description	Length (ft.)	Std. ctn. qty.
TY1D[][]6	1" High wall divider	6	120
TY1.5D[][]6	1.5" High wall divider	6	120
TY2D[][]6	2" High wall divider	6	120
TY3D[][]6	3" High wall divider	6	120
TY4D[][]6	4" High wall divider	6	120
TY5D[][]6	5" High wall divider	6	120

+ Catalog number must be completed by adding suffix SP for solid or WP for wide slot.
Example: TY2DSPG6 is a 2" high solid wall gray divider.

Universal mounting clips

One size fits all.

- Added before or after the duct is in place, without additional hardware
- Twists into place — holds securely
- Installs easily using a screwdriver
- Accommodates up to 40 lb. cable ties
- Black polycarbonate construction



Cat. no.	Description	Qty.
UMC	Universal fastener mount	100 pk

Wiring duct accessories

Corner strips

Install smooth round corners on your wiring duct.

- Constructed of rigid PVC
- One-piece design makes installation a snap
- Works with any Ty-Duct wiring duct
- Select from a variety of sizes



Cat. no.	Description	Length (ft.)	Std. ctn. qty.
TYCS[_]6	Corner strip	6	120

+ Catalog number must be completed by adding suffix G for gray, W for white, I for intrinsic blue, B for black.
Example: TYCSG6 is a gray corner strip.

Joining strips

Join duct sections easily.

- Slides on duct
- Constructed of rigid PVC
- One-piece design makes installation easy
- Works with any Ty-Duct wiring duct



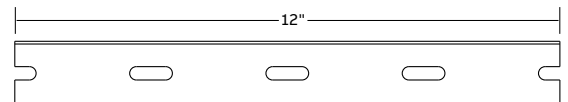
Cat. no.	Description	Length (ft.)	Std. ctn. qty.
TYJC[_]6	Joining strip	6	120

+ Catalog number must be completed by adding suffix G for gray, W for white, I for intrinsic blue, B for black.
Example: TYJCG6 is a gray joining strip.

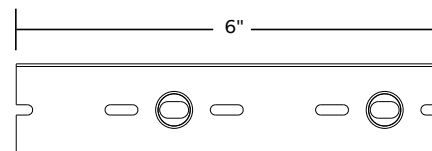
Plastic rivets

Plastic rivets make mounting ducts easy.

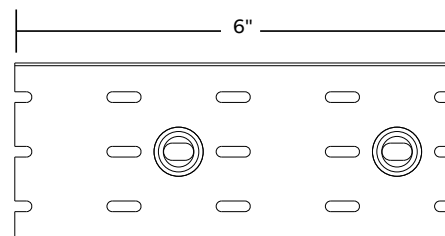
- Fast installation
- Durable and economical
- One size



Minimum mounting rivet distance for ducts of 0.75" and 1" wide.



Minimum mounting rivet distance for ducts 1.5" wide.



Minimum mounting rivet distance for ducts greater than 1.5" wide.
Installed top and bottom.

Cat. no.	Description	Qty.
08200C	3/16" Plastic rivet	100 pk

Wire retainer

Holds wires in place for faster, easier installation and routing.

- One size fits all
- Comes in gray and clear plastic to blend with any duct color
- Size is 2.5"L and 0.281" x 0.18"

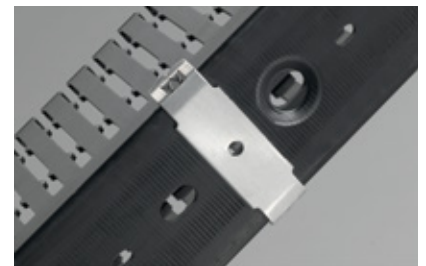


Cat. no.	Description	Qty.
TYWRC	Wire retainer, clear	100
TYWRG	Wire retainer, gray	100

Mounting clips

Ideal for high-temperature environments.

- Speeds duct mounting
- Enables duct removal
- Provides a stand-off between panel and duct to prevent direct heat transfer — ideal for high temperature environments



Cat. no.	Width (in.)	Std. ctn. qty.
TY1MC	1	100
TY15MC	1.5	100
TY2MC	2	100
TY3MC	3	100

All are 0.75" D x 0.35" H and made of Type 316 stainless steel.

Wiring duct tools

The wiring duct tools you need for every application.

Tools include:

- Duct cutting tools for a clean professional finish
- Finger cutting tools that make modifications simple
- Notching tools for duct sidewalls to facilitate tee and corner junctions
- Benchmount cutting tools for fast, high volume duct cutting
- Rivet installation tools for quick duct mounting

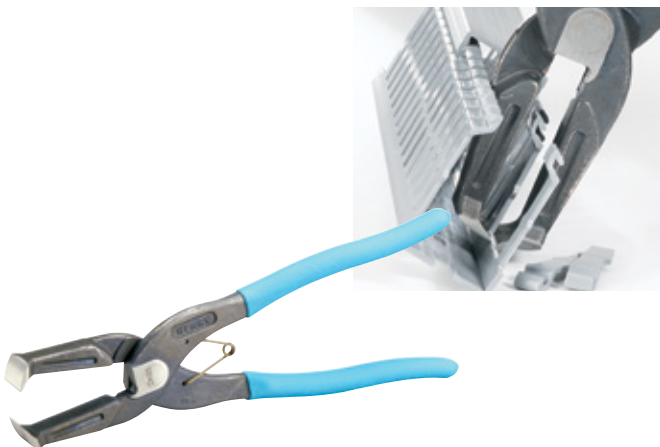


Duct/cover cutting tool

Lightweight and durable.

- All-steel construction
- Sharp cutting surface
- Replaceable blades available
- Improved performance

Cat. no.	Description
SX-25TB	Handheld duct cutter — long



Finger cutting tool

Cut duct fingers easily.

- Rugged die-cast construction with insulated handles for a comfortable, non-slip grip
- Removes duct fingers in tight places
- Works with all slotted wiring duct
- Also cuts round and solid wall duct
- Spring loaded

Cat. no.	Description
DK-65TB	Duct finger cutter

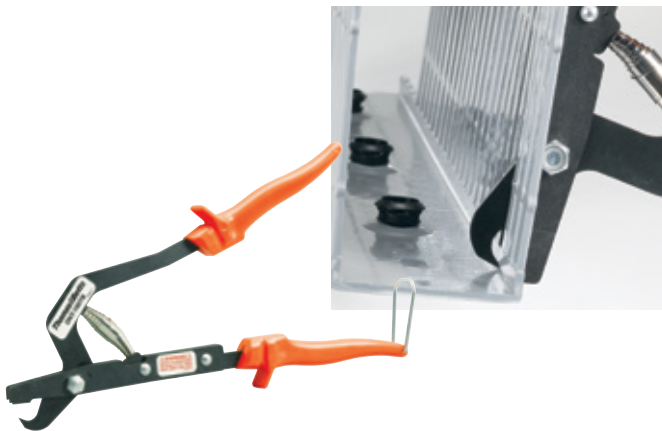


Bench-mount cutting tool

For fast, high volume duct cutting.

- Engineered for use with Ty-Duct plastic wiring ducts and covers
- All-steel construction lasts for years
- Adjustable gauge sets the desired length of duct
- Easy-to-read measuring indicator
- Adjustable stop for easy repeated cutting

Cat. no.	Description
DC-125TB	Bench-mount duct cutter

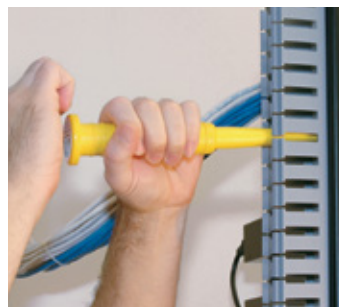


Notching tool

Notch duct sidewalls fast.

- Notches sidewalls to bottom scoreline
- Facilitates tee and corner junctions
- Rugged design
- Easy to use
- Spring loaded

Cat. no.	Description
DNT-100TB	Duct notching tool



Rivet installation tool

Mount ducts quickly.

- Use for setting duct rivets
- Pressure on the tool head secures the rivet in place

For duct rivets, see page 23.



Cat. no.	Description
08205	08200 Series rivet installation tool

For any inquiries, please contact your ABB sales representative.

Wiring duct appendix

Technical information

Wiring duct — wire fill capacity

NOTE: Wire fill is based on 50% fill of duct area.

Nominal duct size (inches)	Area H (inches ²)	Electrical											Data cable				
		8 AWG		10 AWG		12 AWG		14 AWG		16 AWG		18 AWG		22 AWG	24 AWG	0.25	0.422
		0.216	0.153	0.122	0.158	0.105	0.139	0.165	0.096	0.125	0.084	0.113	0.065	0.217	UTP/CM CAT5E	UTP/CM CAT6	UTP/CM
0.75 x 1.00	0.750	5	9	14	9	19	11	8	23	14	30	17	51	5	3	1	
0.75 x 1.50	1.125	7	14	22	13	29	17	12	35	21	46	25	76	7	5	2	
0.75 x 2.00	1.500	9	18	29	17	39	22	16	47	27	61	34	101	9	7	2	
1.00 x 1.00	1.000	6	12	19	11	26	15	10	31	18	40	22	68	6	5	2	
1.00 x 1.50	1.500	9	18	29	17	39	22	16	47	27	61	34	101	9	7	2	
1.00 x 2.00	2.000	12	24	38	23	52	30	21	62	37	81	45	135	12	9	3	
1.00 x 3.00	3.000	18	37	58	34	78	44	31	93	55	121	67	203	18	14	5	
1.00 x 4.00	4.000	24	49	77	46	104	59	42	124	73	162	90	270	24	18	6	
1.50 x 1.00	1.500	9	18	29	17	39	22	16	47	27	61	34	101	9	7	2	
1.50 x 1.50	2.250	14	27	43	26	58	33	24	70	41	91	50	152	14	10	4	
1.50 x 2.00	3.000	18	37	58	34	78	44	31	93	55	121	67	203	18	14	5	
1.50 x 3.00	4.500	27	55	86	52	117	67	47	140	82	182	101	304	27	21	7	
1.50 x 4.00	6.000	36	73	115	69	155	89	63	186	110	243	134	406	36	27	10	
2.00 x 1.00	2.000	12	24	38	23	52	30	21	62	37	81	45	135	12	9	3	
2.00 x 1.50	3.000	18	37	58	34	78	44	31	93	55	121	67	203	18	14	5	
2.00 x 2.00	4.000	24	49	77	46	104	59	42	124	73	162	90	270	24	18	6	
2.00 x 3.00	6.000	36	73	115	69	155	89	63	186	110	243	134	406	36	27	10	
2.00 x 4.00	8.000	48	98	154	92	207	118	84	248	146	324	179	541	49	37	13	
2.00 x 5.00	10.000	60	122	192	114	259	148	105	310	183	405	224	676	61	46	16	
2.50 x 2.00	5.000	30	61	96	57	130	74	52	155	91	202	112	338	30	23	8	
2.50 x 3.00	7.500	45	92	144	86	194	111	79	233	137	304	168	507	46	34	12	
2.50 x 4.00	10.000	60	122	192	114	259	148	105	310	183	405	224	676	61	46	16	
3.00 x 1.00	3.000	18	37	58	34	78	44	31	93	55	121	67	203	18	14	5	
3.00 x 2.00	6.000	36	73	115	69	155	89	63	186	110	243	134	406	36	27	10	
3.00 x 3.00	9.000	54	110	173	103	233	133	94	279	165	364	201	609	55	41	14	
3.00 x 4.00	12.000	72	146	230	137	311	177	126	372	219	486	269	811	73	55	19	
3.00 x 5.00	15.000	90	183	288	172	389	222	157	465	274	607	336	1014	91	69	24	
4.00 x 1.50	6.000	36	73	115	69	155	89	63	186	110	243	134	406	36	27	10	
4.00 x 2.00	8.000	48	98	154	92	207	118	84	248	146	324	179	541	49	37	13	
4.00 x 3.00	12.000	72	146	230	137	311	177	126	372	219	486	269	811	73	55	19	
4.00 x 4.00	16.000	96	195	307	183	415	237	168	496	293	648	358	1082	97	73	26	
4.00 x 5.00	20.000	120	244	384	229	518	296	210	620	366	810	448	1352	121	91	32	
6.00 x 4.00	24.000	144	293	461	275	622	355	252	744	439	972	537	1623	146	110	39	

Formula for calculating fill capacity

$$\text{Number of wires} = \frac{\text{Duct W} \times \text{H}}{1.75 \times (\text{Wire O.D.})^2} \div 2$$

—
Properties of materials used in wiring duct

Property	Units	ASTM test	PVC	Halogen-free
Specific gravity	–	D792	1.43	1.10
IZOD	ft.-lb./in.	D256	2	5.0
Flexural strength	psi	D790	10,900	12,800
Flexural modulus	psi	D790	382,000	360,000
Tensile strength	psi	D638	5,500	7,800
Compressive strength	psi	D695	8,600	16,000
Water absorption	24 hrs.–%	D570	0.10	0.07
Hardness	Rockwell	D785	R-111	R-115
	Duro D	D676	78	–
Dielectric strength	–	D149	–	–
	60Hz, 25° C, s/t	vpm	–	400
Dielectric constant	–	D150	–	–
	60Hz, Dry	–	1.9	2.65
	1MHz, Dry	–	–	2.64
Volume resistivity	ohm-cm	D257	–	1017
Heat deflecting (° F@ 264 psi)	° F	D648	158	212
Flammability	–	–	94 V-O	94 V-1

Note: The user should check the applicable specifications to verify values.

Rigid polyvinyl chloride (PVC)

- General-purpose material for indoor applications
- UL flammability rating of V-0
- UL94 recognized for use in temperatures up to 60 °C (140 °F)
- Economical wiring duct material

Halogen-free

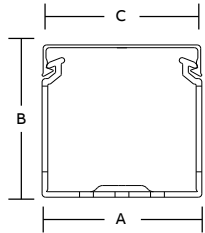
With 8-12 / 4-6mm slots

- Halogen-free thermoplastic in conformity with VDE 0472 standard Part 815: Br + Cl < 0.2 %, F < 0.1 %
- Toxic smoke index: 25.78 in conformity with NF X70-100 and NF F16-101 standards
- Opacity of smoke*:
 - Dm 352.2 (2 mm)
 - VOF4 475.8 (2 mm) in conformity with NF X10-702 standard (NF F16-101 reference)
- Based on the values obtained in the opacity and toxicity tests of smoke, the material belongs to class F2 (in conformity with NF F16-101 standard)
- Insulating, shock-resistant and self-extinguishing thermoplastic in conformity with UL94V-0 standard, resistant to abnormal heat and fire up to 850 °C (glow-wire test) in conformity with IEC 60695-2-1 standard
- Dimensional stability from -40 °C to 100 °C
- Standard length 2 meters
- Color RAL 7035 gray
- Conforms to EN 50085-2-3 standard
- Conforms to RoHS directive

* Reduced smoke opacity during the first 4 minutes of a fire facilitates evacuation from areas of risk.

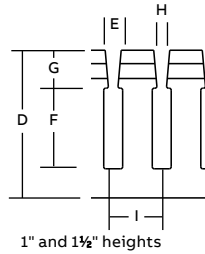
Wiring duct appendix

Dimensional information

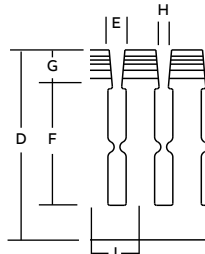


Narrow slot PVC wiring duct dimensions

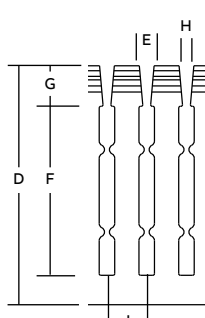
Trade size (in.)		Dimensions (in.)									
W		H	A	B	C	D	E	F	G	H	I
0.75	x	1.50	0.94	1.60	0.94	1.50	0.20	0.93	0.27	0.10	0.50
1.00	x	1.00	1.25	1.14	1.25	1.03	0.20	0.52	0.26	0.10	0.50
1.00	x	1.50	1.25	1.60	1.25	1.50	0.20	0.93	0.27	0.10	0.50
1.00	x	2.00	1.25	2.10	1.25	2.01	0.20	1.36	0.28	0.10	0.50
1.00	x	3.00	1.25	3.05	1.25	2.99	0.20	2.31	0.32	0.10	0.50
1.00	x	4.00	1.25	4.37	1.25	4.32	0.20	3.63	0.32	0.10	0.50
1.50	x	1.00	1.75	1.14	1.75	1.03	0.20	0.52	0.26	0.10	0.50
1.50	x	1.50	1.75	1.60	1.75	1.50	0.20	0.93	0.27	0.10	0.50
1.50	x	2.00	1.75	2.10	1.75	2.01	0.20	1.36	0.29	0.10	0.50
1.50	x	3.00	1.75	3.05	1.75	2.99	0.20	2.28	0.34	0.10	0.50
1.50	x	4.00	1.75	4.37	1.75	4.32	0.20	3.63	0.32	0.10	0.50
2.00	x	1.00	2.25	1.24	2.25	1.05	0.20	0.52	0.28	0.10	0.50
2.00	x	1.50	2.25	1.70	2.25	1.52	0.20	0.93	0.29	0.10	0.50
2.00	x	2.00	2.25	2.19	2.25	2.03	0.20	1.36	0.30	0.10	0.50
2.00	x	3.00	2.25	3.14	2.25	3.00	0.20	2.31	0.33	0.10	0.50
2.00	x	4.00	2.25	4.46	2.25	4.33	0.20	3.63	0.33	0.10	0.50
2.00	x	5.00	2.25	5.15	2.25	5.02	0.20	4.31	0.34	0.10	0.50
2.50	x	2.00	2.75	2.19	2.75	2.03	0.20	1.36	0.30	0.10	0.50
2.50	x	3.00	2.75	3.14	2.75	3.00	0.20	2.31	0.33	0.10	0.50
2.50	x	4.00	2.75	4.46	2.75	4.33	0.20	3.63	0.33	0.10	0.50
3.00	x	1.00	3.25	1.24	3.25	1.06	0.20	0.52	0.29	0.10	0.50
3.00	x	2.00	3.25	2.19	3.25	2.08	0.20	1.36	0.35	0.10	0.50
3.00	x	3.00	3.25	3.14	3.25	3.06	0.20	2.31	0.38	0.10	0.50
3.00	x	4.00	3.25	4.46	3.25	4.39	0.20	3.63	0.39	0.10	0.50
3.00	x	5.00	3.25	5.15	3.25	5.06	0.20	4.31	0.38	0.10	0.50
4.00	x	2.00	4.25	2.19	4.25	2.08	0.20	1.36	0.35	0.10	0.50
4.00	x	3.00	4.25	3.14	4.25	3.06	0.20	2.31	0.38	0.10	0.50
4.00	x	4.00	4.25	4.46	4.25	4.39	0.20	3.63	0.39	0.10	0.50
4.00	x	5.00	4.25	5.15	4.25	5.06	0.20	4.31	0.38	0.10	0.50



1" and 1½" heights

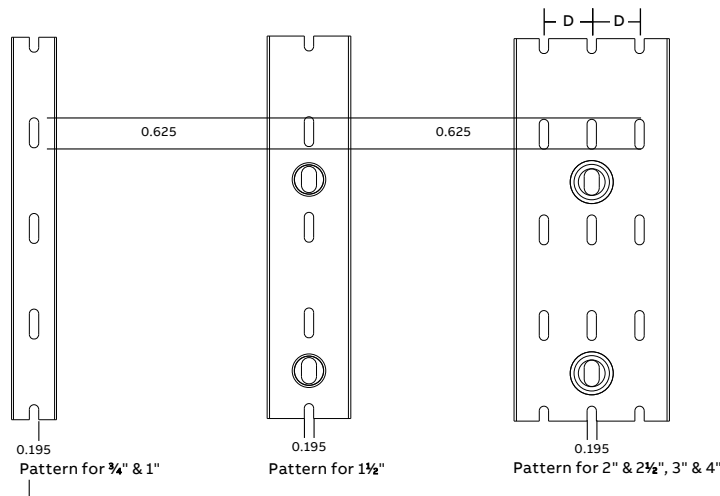


2" height

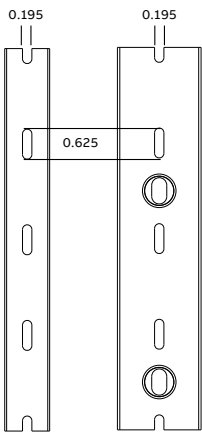
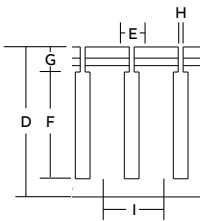
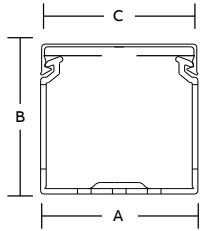


3", 4" and 5" heights

Dimensions shown are for reference only. For complete dimensional and mounting hole patterns, contact your local sales office.

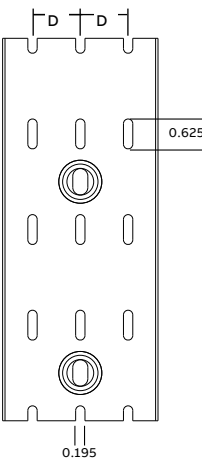


Duct width (in.)	D (in.)
2	0.50
2.5	0.75
3	1.00
4	1.50



Pattern for 3/4" & 1"

Pattern for 1 1/2"



Pattern for 2", 2 1/2", 3", 4" & 6"

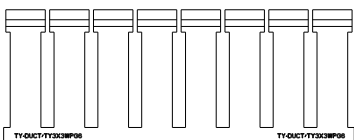
Wide slot PVC wiring duct dimensions

Trade size (in.)		Dimensions (in.)									
W		H	A	B	C	D	E	F	G	H	I
0.75	x	1.00	0.94	1.14	0.94	1.03	0.30	0.52	0.26	0.10	0.80
0.75	x	1.50	0.94	1.60	0.94	1.50	0.30	0.93	0.27	0.10	0.80
0.75	x	2.00	0.94	2.10	0.94	2.01	0.30	1.36	0.29	0.10	0.80
1.00	x	1.00	1.25	1.14	1.25	1.03	0.30	0.52	0.26	0.10	0.80
1.00	x	1.50	1.25	1.60	1.25	1.50	0.30	0.93	0.27	0.10	0.80
1.00	x	2.00	1.25	2.10	1.25	2.01	0.30	1.36	0.28	0.10	0.80
1.00	x	3.00	1.25	3.05	1.25	2.99	0.30	2.31	0.32	0.10	1.00
1.00	x	4.00	1.25	4.37	1.25	4.32	0.30	3.63	0.32	0.10	1.00
1.50	x	1.00	1.75	1.14	1.75	1.03	0.30	0.52	0.26	0.10	0.80
1.50	x	1.50	1.75	1.60	1.75	1.50	0.30	0.93	0.27	0.10	0.80
1.50	x	2.00	1.75	2.10	1.75	2.01	0.30	1.36	0.29	0.10	0.80
1.50	x	3.00	1.75	3.05	1.75	2.99	0.30	2.28	0.34	0.10	1.00
1.50	x	4.00	1.75	4.37	1.75	4.32	0.30	3.63	0.32	0.10	1.00
2.00	x	1.00	2.25	1.24	2.25	1.05	0.30	0.52	0.28	0.10	0.80
2.00	x	1.50	2.25	1.70	2.25	1.52	0.30	0.93	0.29	0.10	0.80
2.00	x	2.00	2.25	2.19	2.25	2.03	0.30	1.36	0.30	0.10	0.80
2.00	x	3.00	2.25	3.14	2.25	3.00	0.30	2.31	0.33	0.10	1.00
2.00	x	4.00	2.25	4.46	2.25	4.33	0.30	3.63	0.33	0.10	1.00
2.00	x	5.00	2.25	5.15	2.25	5.02	0.38	4.31	0.34	0.10	1.33
2.50	x	2.00	2.75	2.19	2.75	2.03	0.30	1.36	0.30	0.10	0.80
2.50	x	3.00	2.75	3.14	2.75	3.00	0.30	2.31	0.33	0.10	1.00
2.50	x	4.00	2.75	4.46	2.75	4.33	0.30	3.63	0.33	0.10	1.00
3.00	x	1.00	3.25	1.24	3.25	1.06	0.30	0.52	0.29	0.10	0.80
3.00	x	2.00	3.25	2.19	3.25	2.08	0.30	1.36	0.35	0.10	0.80
3.00	x	3.00	3.25	3.14	3.25	3.06	0.30	2.31	0.38	0.10	1.00
3.00	x	4.00	3.25	4.46	3.25	4.39	0.30	3.63	0.39	0.10	1.00
3.00	x	5.00	3.25	5.15	3.25	5.06	0.38	4.31	0.38	0.10	1.33
4.00	x	1.50	4.25	1.70	4.25	1.57	0.30	0.93	0.34	0.10	0.80
4.00	x	2.00	4.25	2.19	4.25	2.08	0.30	1.36	0.35	0.10	0.80
4.00	x	3.00	4.25	3.14	4.25	3.06	0.30	2.31	0.38	0.10	1.00
4.00	x	4.00	4.25	4.46	4.25	4.39	0.30	3.63	0.39	0.10	1.00
4.00	x	5.00	4.25	5.15	4.25	5.06	0.38	4.31	0.38	0.10	1.33
6.00	x	4.00	6.25	4.46	6.25	4.39	0.30	3.63	0.39	0.10	1.00

Dimensions shown are for reference only. For complete dimensional and mounting hole patterns, contact your local sales office.



3/4" x 1 1/2"

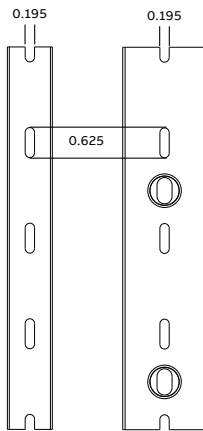
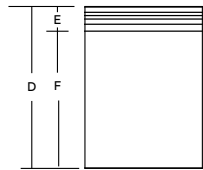
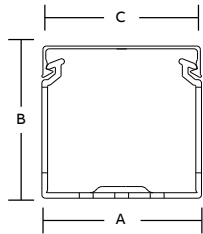


3" x 3"

Duct width (in.)	D (in.)
2	0.50
2.5	0.75
3	1.00
4	1.50
6	2.50

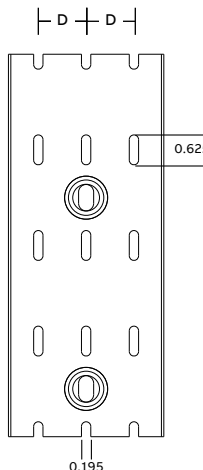
Wiring duct appendix

Dimensional information



Pattern for
¾" & 1"

Pattern
for 1½"



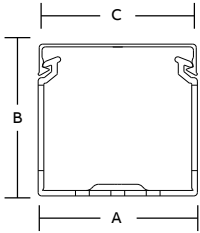
Pattern for 2",
2½", 3", 4" & 6"

Solid wall PVC wiring duct dimensions

Trade size (in.)		Dimensions (in.)						
W		H	A	B	C	D	E	F
0.75	x	1.00	0.94	1.14	0.94	1.03	0.26	0.77
0.75	x	1.50	0.94	1.60	0.94	1.50	0.27	1.23
0.75	x	2.00	0.94	2.10	0.94	2.01	0.29	1.73
1.00	x	1.00	1.25	1.14	1.25	1.03	0.26	0.77
1.00	x	1.50	1.25	1.60	1.25	1.50	0.27	1.23
1.00	x	2.00	1.25	2.10	1.25	2.01	0.28	1.73
1.00	x	3.00	1.25	3.05	1.25	2.99	0.32	2.68
1.00	x	4.00	1.25	4.37	1.25	4.32	0.32	4.00
1.50	x	1.00	1.75	1.14	1.75	1.03	0.26	0.77
1.50	x	1.50	1.75	1.60	1.75	1.50	0.27	1.23
1.50	x	2.00	1.75	2.10	1.75	2.01	0.29	1.73
1.50	x	3.00	1.75	3.05	1.75	2.99	0.34	2.65
1.50	x	4.00	1.75	4.37	1.75	4.32	0.32	4.00
2.00	x	1.00	2.25	1.24	2.25	1.05	0.28	0.77
2.00	x	1.50	2.25	1.70	2.25	1.52	0.29	1.23
2.00	x	2.00	2.25	2.19	2.25	2.03	0.30	1.73
2.00	x	3.00	2.25	3.14	2.25	3.00	0.33	2.68
2.00	x	4.00	2.25	4.46	2.25	4.33	0.33	4.00
2.00	x	5.00	2.25	5.15	2.25	5.02	0.34	4.68
2.50	x	2.00	2.75	2.19	2.75	2.03	0.30	1.73
2.50	x	3.00	2.75	3.14	2.75	3.00	0.33	2.68
2.50	x	4.00	2.75	4.46	2.75	4.33	0.33	4.00
3.00	x	1.00	3.25	1.24	3.25	1.06	0.29	0.77
3.00	x	2.00	3.25	2.19	3.25	2.08	0.35	1.73
3.00	x	3.00	3.25	3.14	3.25	3.06	0.38	2.68
3.00	x	4.00	3.25	4.46	3.25	4.39	0.39	4.00
3.00	x	5.00	3.25	5.15	3.25	5.06	0.38	4.68
4.00	x	1.50	4.25	1.70	4.25	1.57	0.34	1.23
4.00	x	2.00	4.25	2.19	4.25	2.08	0.35	1.73
4.00	x	3.00	4.25	3.14	4.25	3.06	0.38	2.68
4.00	x	4.00	4.25	4.46	4.25	4.39	0.39	4.00
4.00	x	5.00	4.25	5.15	4.25	5.06	0.38	4.68
6.00	x	4.00	6.25	4.46	6.25	4.39	0.39	4.00

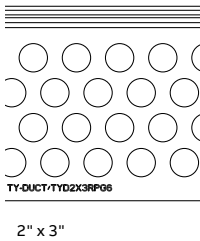
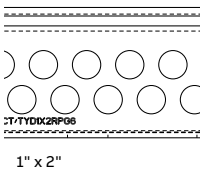
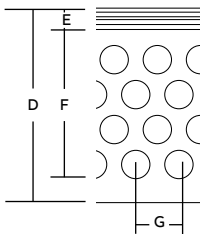
Dimensions shown are for reference only. For complete dimensional and mounting hole patterns, contact your local sales office.

Duct width (in.)	D (in.)
2	0.50
2.5	0.75
3	1.00
4	1.50
6	2.50

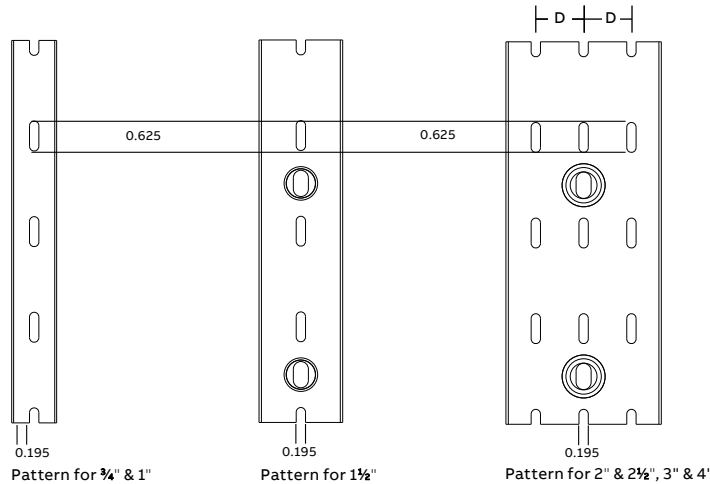


Round hole PVC wiring duct dimensions

Trade size (in.)		Dimensions (in.)								Rows of holes
W		H	A	B	C	D	E	F	G	
1.00	x	1.50	1.25	1.60	1.25	1.50	0.27	1.23	0.67	2
1.00	x	2.00	1.25	2.10	1.25	2.01	0.28	1.73	0.67	2
1.00	x	3.00	1.25	3.05	1.25	2.99	0.32	2.68	0.67	4
1.00	x	4.00	1.25	4.37	1.25	4.32	0.32	4.00	0.67	6
1.50	x	1.00	1.75	1.14	1.75	1.03	0.26	0.77	0.67	2
1.50	x	1.50	1.75	1.60	1.75	1.50	0.27	1.23	0.67	2
1.50	x	2.00	1.75	2.10	1.75	2.01	0.29	1.73	0.67	2
1.50	x	3.00	1.75	3.05	1.75	2.99	0.34	2.65	0.67	4
1.50	x	4.00	1.75	4.37	1.75	4.32	0.32	4.00	0.67	6
2.00	x	1.50	2.25	1.70	2.25	1.52	0.29	1.23	0.67	2
2.00	x	2.00	2.25	2.19	2.25	2.03	0.30	1.73	0.67	2
2.00	x	3.00	2.25	3.14	2.25	3.00	0.33	2.68	0.67	4
2.00	x	4.00	2.25	4.46	2.25	4.33	0.33	4.00	0.67	6
3.00	x	2.00	3.25	2.19	3.25	2.08	0.35	1.73	0.67	2
3.00	x	3.00	3.25	3.14	3.25	3.06	0.38	2.68	0.67	4
3.00	x	4.00	3.25	4.46	3.25	4.39	0.39	4.00	0.67	6
4.00	x	1.50	4.25	1.70	4.25	1.57	0.34	1.23	0.67	2
4.00	x	2.00	4.25	2.19	4.25	2.08	0.35	1.73	0.67	2
4.00	x	3.00	4.25	3.14	4.25	3.06	0.38	2.68	0.67	4
4.00	x	4.00	4.25	4.46	4.25	4.39	0.39	4.00	0.67	6



Dimensions shown are for reference only. For complete dimensional and mounting hole patterns, contact your local sales office.

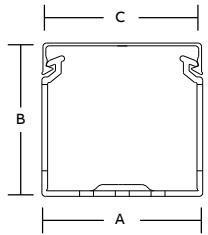


Duct width (in.)	D (in.)
2	0.50
2.5	0.75
3	1.00
4	1.50

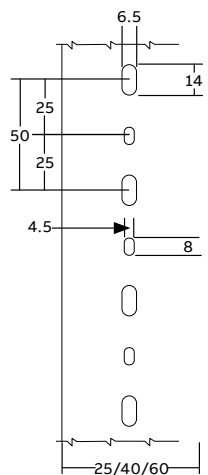
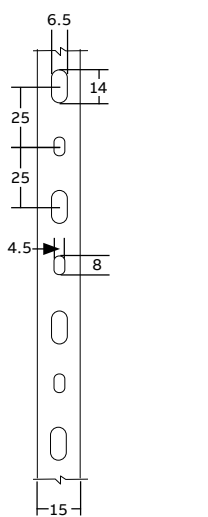
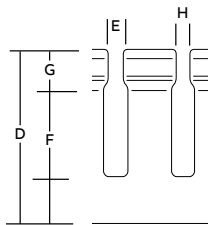
Wiring duct appendix

Dimensional information

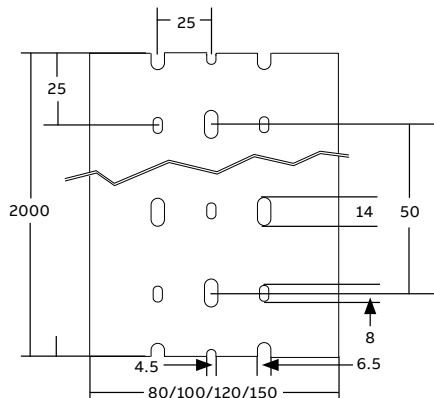
02



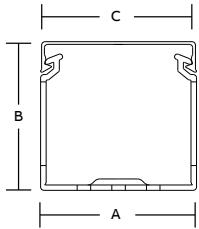
Wide slot halogen-free and metric wiring duct dimensions



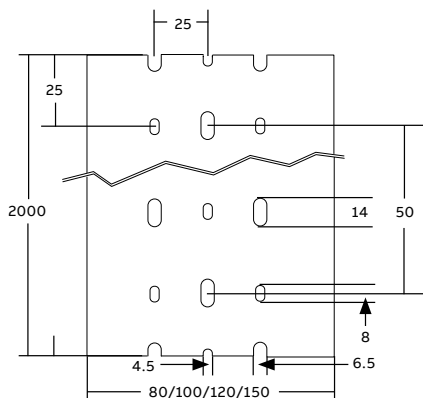
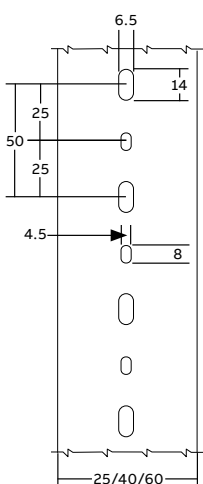
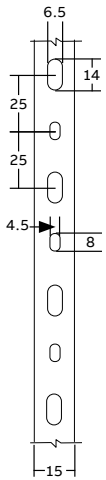
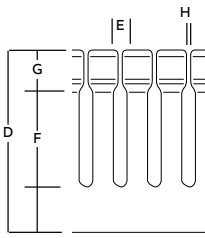
Trade size (mm)		Dimensions (mm)									
W		H	A	B	C	D	E	F	G	H	I
15	X	17	15	17	18.3	16.25	8	9.7	3.55	5.4	20
25	X	30	25	30	28.3	28.5	8	6.5	12	2	20
40	X	30	40	30	43.3	28.5	8	6.5	12	2	20
60	X	30	60	30	63.3	28.5	8	6.5	12	2	20
25	X	40	25	40	28.3	38.5	8	14.5	12	2	20
40	X	40	40	40	43.3	38.5	8	14.5	12	2	20
60	X	40	60	40	63.3	38.5	8	14.5	12	2	20
80	X	40	80	40	83.3	38.5	8	14.5	12	2	20
100	X	40	100	40	103.3	38.5	8	14.5	12	2	20
120	X	40	120	40	123.3	38.5	8	14.5	12	2	20
25	X	60	25	60	28.3	58.5	8	32.5	12	2	20
40	X	60	40	60	43.3	58.5	8	32.5	12	2	20
60	X	60	60	60	63.3	58.5	8	32.5	12	2	20
80	X	60	80	60	83.3	58.5	8	32.5	12	2	20
100	X	60	100	60	103.3	58.5	8	32.5	12	2	20
120	X	60	120	60	123.3	58.5	8	32.5	12	2	20
25	X	80	25	80	28.3	78	8	53	12	2	20
40	X	80	40	80	43.3	78	8	53	12	2	20
60	X	80	60	80	63.3	78	8	53	12	2	20
80	X	80	80	80	83.3	78	8	53	12	2	20
100	X	80	100	80	103.3	78	8	53	12	2	20
120	X	80	120	80	123.3	78	8	53	12	2	20
40	X	100	40	100	43.3	98	8	70	12	2	20
60	X	100	60	100	63.3	98	8	70	12	2	20
80	X	100	80	100	83.3	98	8	70	12	2	20
100	X	100	100	100	103.3	98	8	70	12	2	20



- A = duct width
- B = total height (duct + cover)
- C = overall cover width
- D = duct height
- E = slot width
- F = slot height
- G = cover engagement height
- H = insertion width
- I = slot to slot distance



Narrow slot halogen-free and metric wiring duct dimensions



Trade size (mm)		Dimensions (mm)									
W		H	A	B	C	D	E	F	G	H	I
15	X	17	15	17	18.3	16.25	4	9.7	3.55	1.4	10
25	X	30	25	30	28.3	28.5	4	7.3	12	1.6	10
40	X	30	40	30	43.3	28.5	4	7.3	12	1.6	10
60	X	30	60	30	63.3	28.5	4	7.3	12	1.6	10
25	X	40	25	40	28.3	38.5	4	15.3	12	1.6	10
40	X	40	40	40	43.3	38.5	4	15.3	12	1.6	10
60	X	40	60	40	63.3	38.5	4	15.3	12	1.6	10
80	X	40	80	40	83.3	38.5	4	15.3	12	1.6	10
100	X	40	100	40	103.3	38.5	4	15.3	12	1.6	10
120	X	40	120	40	123.3	38.5	4	15.3	12	1.6	10
25	X	60	25	60	28.3	58.5	4	32.5	12	1.6	10
40	X	60	40	60	43.3	58.5	4	32.5	12	1.6	10
60	X	60	60	60	63.3	58.5	4	32.5	12	1.6	10
80	X	60	80	60	83.3	58.5	4	32.5	12	1.6	10
100	X	60	100	60	103.3	58.5	4	32.5	12	1.6	10
120	X	60	120	60	123.3	58.5	4	32.5	12	1.6	10
25	X	80	25	80	28.3	78	4	53	12	1.6	10
40	X	80	40	80	43.3	78	4	53	12	1.6	10
60	X	80	60	80	63.3	78	4	53	12	1.6	10
80	X	80	80	80	83.3	78	4	53	12	1.6	10
100	X	80	100	80	103.3	78	4	53	12	1.6	10
120	X	80	120	80	123.3	78	4	53	12	1.6	10

Wiring duct appendix

Industry standards and certifications

Ty-Duct wiring duct meets all of the prominent agency approvals and standards.

Agency approvals:



Ty-Duct wiring duct is UL recognized for all requirements set forth in UL standard 1565 "Positioning Device."



The Ty-Duct wiring duct meets all applicable requirements of the Canadian Standard Association as described in CSA C22.2 No. 18.5.



All Ty-Duct wiring duct components comply with the European Directives for CE (Conformite European) Marking.

All materials used in the making of the Ty-Duct wiring duct comply with the European Directives 2002/95/EC (RoHS), 2002/96/EC (WEEE), and 2003/11/EC.

Standards:

UL 508/UL 508A

As required in UL 508/UL 508A a factory-installed conductor shall be separated from a conductor used in a different circuit when the conductors are not insulated for the maximum voltage of either circuit. The Ty-Duct wiring duct with a divider wall creates the required separation to meet this requirement.





03

Spiral wrap, grommets, hook-and-loop and braided sleeving



Spiral wrap, grommeting, hook-and-loop and braided sleeving

Spiral wrap, grommeting, hook-and-loop and braided sleeving	
Spiral wrap and grommeting overview	50
Spiral wrap	51
Extruded grommeting	52
Ty-Grip™ hook-and-loop fasteners	53
Braided expandable wire protection sleeving	56

Spiral wrap and grommeting

Overview

Cable protection systems from ABB offers both spiral wrap and grommeting.

Spiral wrap is mainly used for protection of bundles. This product is available in a natural and UV-resistant version.

ABB extruded grommeting is used to line panel edges and knock-outs where potential chafing of passing wires is a concern. In most applications, grommeting will grip tightly by itself.

Spiral wrap



Characteristics

- For protection of bundles from 0.63" to 7" (1.6 mm to 177.8 mm) diameter
- Install gapped for greater flexibility or butted for maximum abrasion resistance, insulation and rigidity
- Counter-clockwise cut
- Available in natural and UV-resistant black polyethylene or natural nylon 6.6

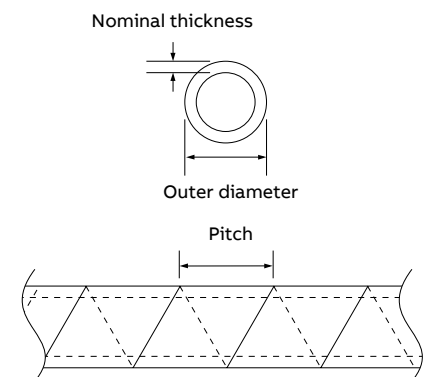
Technical information

- Material: Polyethylene or nylon 6.6
- Temperature range: -30 °C to +80 °C (-22 °F to 176 °F)
- Color: Natural and UV-resistant black
- Flammability rating: UL 94 HB
- Other properties: UV-resistant black, halogen-free, silicone-free

Spiral wrap

Cat. no.	Outer diameter		Pitch		Nom. wall thickness		Min. – max. bundle diameter		Length	
	[in.]	[mm]	[in.]	[mm]	[in.]	[mm]	[in.]	[mm]	[ft.]	[m]
Natural polyethylene										
SRPE-125-9-C	0.13	3.18	0.21	5.33	0.04	0.89	0.06–0.50	1.60–12.70	100	30.48
SRPE-187-9-C	0.19	4.75	0.24	6.10	0.04	1.02	0.13–1.50	3.18–38.10	100	30.48
SRPE-250-9-C	0.25	6.35	0.38	9.53	0.05	1.14	0.19–2.00	4.78–50.80	100	30.48
SRPE-375-9-C	0.38	9.53	0.44	11.13	0.05	1.32	0.31–3.00	7.95–76.20	100	30.48
SRPE-500-9-C	0.50	12.70	0.56	14.30	0.06	1.57	0.38–4.00	9.53–101.60	100	30.48
SRPE-625-9-C	0.63	15.88	0.63	15.88	0.06	1.57	0.63–4.50	15.88–114.30	100	30.48
SRPE-750-9-C	0.63	15.88	0.75	19.05	0.07	1.65	0.75–5.00	19.05–127.00	100	30.48
SRPE-1000-9-C	1.00	25.40	1.11	28.19	0.70	17.78	1.00–7.00	25.40–177.80	100	30.48
UV-resistant black polyethylene										
SRPE-125-0-C	0.13	3.18	0.21	5.33	0.04	0.89	0.06–0.50	1.60–12.70	100	30.48
SRPE-187-0-C	0.19	4.75	0.24	6.10	0.04	1.02	0.13–1.50	3.18–38.10	100	30.48
SRPE-250-0-C	0.25	6.35	0.38	9.53	0.05	1.14	0.19–2.00	4.78–50.80	100	30.48
SRPE-375-0-C	0.38	9.53	0.44	11.13	0.05	1.32	0.31–3.00	7.95–76.20	100	30.48
SRPE-500-0-C	0.50	12.70	0.56	14.30	0.06	1.57	0.38–4.00	9.53–101.60	100	30.48
SRPE-625-0-C	0.63	15.88	0.63	15.88	0.06	1.57	0.63–4.50	15.88–114.30	100	30.48
SRPE-750-0-C	0.63	15.88	0.75	19.05	0.07	1.65	0.75–5.00	19.05–127.00	100	30.48
SRPE-1000-0-C	1.00	25.40	1.11	28.19	0.70	17.78	1.00–7.00	25.40–177.80	100	30.48
Natural nylon 6.6										
SRNY-187-9-C	0.19	4.75	0.24	6.10	0.03	0.64	0.13–1.50	3.18–38.10	100	30.48

Dimensions



Extruded grommeting



Characteristics

- Used to line panel edges and knock-outs where potential chafing of passing wires is a concern
- Available in 8 stock sizes in 30.5 mm (100.07 ft) lengths for panels from 1 mm to 6.35 mm (0.04" to 0.25")
- In most applications, grommeting will grip tightly by itself, if not, a drop of epoxy will keep it in place

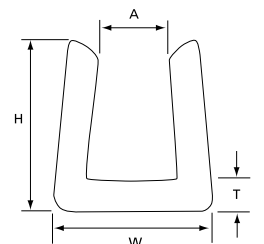
Technical information

- Material: Polyamide 6.6
- Temperature range: -40 °C to +85 °C (-40 °F to 185 °F)
- Color: Natural or black
- Flammability rating: UL 94 V-2
- Other properties: Halogen free, silicone free

Extruded grommeting

Cat. no.	GID no.	Dimensions									
		Internal width A		Thickness T		H		W		Length per reel	
		[mm]	[in]	[mm]	[in]	[mm]	[in]	[mm]	[in]	[m]	[ft]
Natural											
GRNY-040-9-C	7TAG009750R0018	1.01	0.04	1.01	0.04	4.82	0.19	3.17	0.12	30.5	100.07
GRNY-052-9-C	7TAG009750R0021	1.32	0.05	1.01	0.04	4.82	0.19	3.17	0.12	30.5	100.07
GRNY-062-9-C	7TAG009750R0023	1.57	0.06	1.14	0.04	5.08	0.2	4.32	0.17	30.5	100.07
GRNY-085-9-C	7TAG009750R0026	2.15	0.08	1.14	0.04	5.08	0.2	4.32	0.17	30.5	100.07
GRNY-100-9-C	7TAG009750R0028	2.54	0.1	1.14	0.04	5.58	0.22	5.33	0.21	30.5	100.07
GRNY-125-9-C	7TAG009750R0031	3.17	0.12	1.27	0.05	5.58	0.22	5.23	0.21	30.5	100.07
GRNY-187-9-C	7TAG009750R0033	4.74	0.19	1.27	0.05	6.85	0.27	6.98	0.27	30.5	100.07
GRNY-250-9-C	7TAG009750R0035	6.35	0.25	1.27	0.05	7.11	0.28	9.39	0.37	30.5	100.07
Black											
GRNY-040-0-C	7TAG009750R0017	1.01	0.04	1.01	0.04	4.82	0.19	3.17	0.12	30.5	100.07
GRNY-052-0-C	7TAG009750R0019	1.32	0.05	1.01	0.04	4.82	0.19	3.17	0.12	30.5	100.07
GRNY-062-0-C	7TAG009750R0022	1.57	0.06	1.14	0.04	5.08	0.2	4.32	0.17	30.5	100.07
GRNY-085-0-C	7TAG009750R0024	2.15	0.08	1.14	0.04	5.08	0.2	4.32	0.17	30.5	100.07
GRNY-100-0-C	7TAG009750R0027	2.54	0.1	1.14	0.04	5.58	0.22	5.33	0.21	30.5	100.07
GRNY-125-0-C	7TAG009750R0029	3.17	0.12	1.27	0.05	5.58	0.22	5.23	0.21	30.5	100.07
GRNY-187-0-C	7TAG009750R0032	4.74	0.19	1.27	0.05	6.85	0.27	6.85	0.27	30.5	100.07
GRNY-250-0-C	7TAG009750R0034	6.35	0.25	1.27	0.05	7.11	0.28	9.39	0.37	30.5	100.07

Dimensions



Ty-Grip™ hook-and-loop fasteners



FO series loop ties are ideal for wrapping pre-determined bundle diameters due to the convenient slotted head.



FOL series buckle ties provide added strength and stability due to the high performance polyamide buckle.

Characteristics

These handy ties are very easy to release and re-use, making them ideal for applications where changes are anticipated or continuous access is required.

- Quick bundling and re-adjustable tension
- Ideal for specific applications in fiber optics, computer network wiring, telecom cables, etc.
- Available in buckle straps, overlap straps and headless strips to suit many applications
- Screw-mount and self-adhesive mounting bases provide multiple mounting options
- Multiple colors available for identifying specific bundles
- Additional colors available through special order. See sales representative for pricing, lead time and MOQ.

Technical information FO series

- Material hook side: Polyamide
- Material loop side: Low density polyethylene
- Temperature range: -20 °C to +104 °C (-4 °F to 219.2 °F)
- Color: Standard color: black
- Flammability rating: UL 94 HB*
- Peel-off strength: 0.8 N/cm

Technical information FOL series

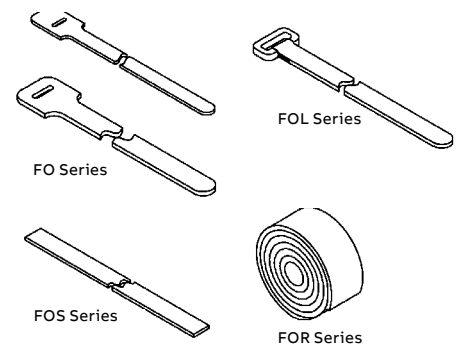
- Material hook side: Polyamide
- Temperature range: -20 °C to +93 °C (-4 °F to 199.4 °F)
- Color: Standard color: black (see note after table)
- Flammability rating: UL 94 HB
- Peel-off strength: 0.8 N/cm
- Other properties: Halogen-free, silicone-free

Ty-Grip™ hook and loop fasteners

Product code	GID No.	Maximum bundle diameter		Length L		Width W		Tensile strength [lb/N]	Quantity [pieces]
		[mm]	[in]	[mm]	[in]	[mm]	[in]		
FO series loop ties									
FO200-40-0	7TAG009630R0018	50.8	2	228.6	9	12.7	0.5	40/180	10
FO200-50-0	7TAG009630R0026	50.8	2	228.6	9	19.1	0.75	50/220	10
FO350-40-0	7TAG009630R0031	88.9	3.5	330.2	13	12.7	0.5	40/180	10
FO350-50-0	7TAG009630R0033	88.9	3.5	330.2	13	19.1	0.75	50/220	10
FO350-50-0-FR*	7TAG009000R0104	88.9	3.5	330.2	13	19.1	0.75	50/220	10
FOL series buckle ties									
FOL300-50-0	7TAG009630R0036	76.2	3	304.8	12	19.1	0.75	50/220	10
FOL500-50-0	7TAG009630R0040	127.0	5	457.2	10.13	19.1	0.75	50/220	10

* Suffix FR is flame-retardant version.
For use with mounting bases TC368 and TC368A. See page 74 for details.

Dimensions



Ty-Grip™ hook-and-loop fasteners



FOS series strip ties are pre-cut, which makes bundling easy.



FOR series rolled hook and loop allows customers to conveniently cut pieces to desired lengths, eliminating waste.

Characteristics

These handy ties are very easy to release and re-use, making them ideal for applications where changes are anticipated or continuous access is required.

- Quick bundling and re-adjustable tension
- Hook and loop fasteners are gentle on cables, making them ideal for specific applications in fiber optics, computer network wiring, telecom cables, etc.
- Available in pre-cut strips and rolls for a variety of applications
- Screw-mount and self-adhesive mounting bases provide multiple mounting options

Technical information FOS and FOR series

- Material hook side: Polyamide
- Material loop side: Low density polyethylene
- Temperature range: -20 °C to +104 °C (-4 °F to 219.2 °F)
- Color: Standard color: black*
- Flammability rating: UL 94 HB
- Peel-off strength: 0.8 N/cm
- Other properties: Halogen-free, silicone-free

Ty-Grip™ hook and loop fasteners

Product code	GID no.	Maximum bundle diameter		Length L		Width W		Tensile strength [lb/N]	Quantity [pieces]
		[mm]	[in]	[mm]	[in]	[mm]	[in]		
FOS series strip ties									
FOS150-50-0	7TAG009630R0046	38.1	1.5	152.4	6	19.1	0.75	50/220	10
FOS320-50-0	7TAG009630R0048	81.3	3.20	304.8	12	19.1	0.75	50/220	10
FOS500-50-0	7TAG009630R0050	127.0	5	457.2	18	19.1	0.75	50/220	10
FOR series rolled strip									
FOR180-50-0	7TAG009630R0041	Various		4572.0	180	19.1	0.75	50/220	1
FOR180-50-0-FR**	7TAG009370R0000	Various		4572.0	180	19.1	0.75	50/220	1

* Standard color: black.

** FOR180-50-0-FR is made of flame-retardant material.

Contact your Sales Office for product availability in the other colors.



Braided expandable wire protection sleeving

Available in mini spools or bulk reels

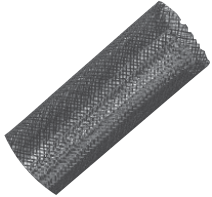


ABB Installation Products braided wire protection sleeving is used to bundle and protect wires and cables from abrasion and excessive wear. Its flexible, lightweight, open weave construction installs easily over a variety of bundle diameters and shapes. The polyethylene terephthalate (PET) sleeving is resistant to chemicals, fungus, fuels and UV sunlight. It's easily cut with a hot knife, which seals the end, preventing fraying. Ends can be secured using Catamount® cable ties.

Features

- Handy mini spools or bulk reels
- Sizes from 1/8" (3.18 mm) to 2 1/2" (63.5 mm) nominal I.D.
- Solid or wraparound hook-and-loop braided expandable wire sleeving
- Meets UL94V-1

Catalog number system

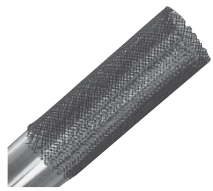
Cat. no.	Nominal I.D. (in./mm)	Color	Nominal diameter range (in./mm)	Reel quantity	Std. pkg. qty.
S250PT-0	0.250/6.35	Black	0.125 to 0.375/3.18 to 9.53	200 ft./60.96 m	1
S375PC-0	0.375/9.53	Black	0.187 to 0.625/4.75 to 15.88	125 ft./38.10 m	1

S = Braided expandable wire sleeving materials
 P = PET (polyethylene terephthalate)
 PW = PET hook-and-loop wraparound sleeving

Nominal I.D. equivalents
 0.125 = 1/8"
 0.250 = 1/4"
 0.375 = 3/8"
 0.500 = 1/2"
 0.750 = 3/4"
 1.250 = 1 1/4"
 1.500 = 1 1/2"
 1.750 = 1 3/4"
 2.000 = 2"
 2.500 = 2 1/2"



PET braided expandable wire sleeving — Mini spool

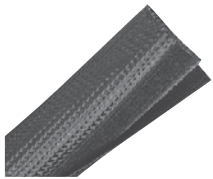


Std pkg. cat. no.	Nominal I.D. in./mm	Color	Nominal diameter range in./mm	Spool quantity	Std. pkg. qty.
S250PT-0	0.25/6.35	Black	0.13 to 0.38/ 3.18 to 9.53	200 ft./60.96 m	1
S500PC-0	0.50/12.70	Black	0.25 to 0.75/ 6.35 to 19.05	100 ft./30.48 m	1
S750PC-0	0.75/19.05	Black	0.50 to 1.25/ 12.70 to 31.75	100 ft./30.48 m	1

NOTE: Order by spool, not per foot.



PET hook-and-loop, wraparound sleeving — Mini spool

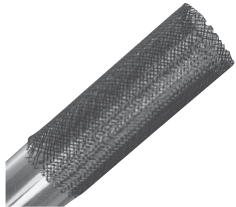


Std pkg. cat. no.	Nominal I.D. in./mm	Color	Nominal diameter range in./mm	Spool quantity	Std. pkg. qty.
S500PWL-0	0.50/12.70	Black	0.25 to 0.75/ 6.35 to 19.05	50 ft./15.24 m	1
S1250PWL-0	1.25/31.75	Black	0.75 to 1.75/ 19.05 to 44.45	50 ft./15.24 m	1
S2000PWL-0	2.00/50.80	Black	1.50 to 3.50/ 38.10 to 88.90	50 ft./15.24 m	1

NOTE: Order by spool, not per foot.



PET braided expandable wire sleeving — Bulk reel



Std pkg. cat. no.	Nominal I.D. in./mm	Color	Nominal diameter range in./mm	Reel quantity	Std. pkg. qty.
S125PM-0	0.125/3.18	Black	0.09 to 0.250/ 2.39 to 6.35	1,000 ft./304.80 m	1
S250PM-0	0.25/6.35	Black	0.125 to 0.375/ 3.18 to 9.53	1,000 ft./304.80 m	1
S500PD-0	0.50/12.70	Black	0.25 to 0.75/ 6.35 to 19.05	500 ft./152.40 m	1
S750PK-0	0.75/19.05	Black	0.50 to 1.25/ 12.70 to 31.75	250 ft./76.20 m	1
S1250PK-0	1.25/31.75	Black	0.75 to 1.75/ 19.05 to 44.45	250 ft./76.20 m	1
S1750PT-0	1.75/44.45	Black	1.25 to 2.75/ 31.75 to 59.85	200 ft./60.96 m	1
S2000PT-0	2.00/50.80	Black	1.50 to 3.50/ 38.10 to 88.90	200 ft./60.96 m	1

NOTE: Order by reel, not per foot.

Index

Cat. No.	Page	Cat. No.	Page	Cat. No.	Page
05019	31	05187	32	GRNY-125-9-C	52
05033	31	05189	32	GRNY-187-0-C	52
05035	31	05191	32	GRNY-187-9-C	52
05037	31	05193	32	GRNY-250-0-C	52
05043	31	05194	32	GRNY-250-9-C	52
05045	31	05195	32	L-11-120-0-C	9
05047	31	05196	32	L-11-120-2-C	11
05049	31	05197	32	L-11-120-3-C	11
05051	31	05198	32	L-11-120-4-C	11
05053	31	05199	32	L-11-120-5-C	11
05063	31	05300	32	L-11-120-6-C	11
05065	31	05302	32	L-11-120-9-C	9
05067	31	05304	32	L-11-40-0-C	8
05069	31	05306	32	L-11-40-0-D	8
05071	31	05308	32	L-11-40-2-C	10
05073	31	05310	32	L-11-40-3-C	10
05083	31	05312	32	L-11-40-4-C	10
05085	31	05314	32	L-11-40-5-C	10
05087	31	08200C	34	L-11-40-6-C	10
05089	31	08205	37	L-11-40-9-C	8
05091	31	DC-125TB	37	L-11-40-9-D	8
05093	31	DK-65TB	36	L-11-50-0-C	9
05094	31	DNT-100TB	37	L-11-50-0-D	9
05095	31	FO200-40-0	53	L-11-50-2-C	11
05096	31	FO200-50-0	53	L-11-50-3-C	11
05097	31	FO350-40-0	53	L-11-50-4-C	11
05098	31	FO350-50-0	53	L-11-50-5-C	11
05099	31	FO350-50-0-FR	53	L-11-50-6-C	11
05119	32	FOL300-50-0	53	L-11-50-9-C	9
05133	32	FOL500-50-0	53	L-11-50-9-D	9
05135	32	FOR180-50-0	54	L-11-50MH-0-C	13
05137	32	FOR180-50-0-FR	54	L-11-50MH-0-D	13
05143	32	FOS150-50-0	54	L-11-50MH-9-C	13
05145	32	FOS320-50-0	54	L-11-50MH-9-D	13
05147	32	FOS500-50-0	54	L-14-120-0-C	9
05149	32	GRNY-040-0-C	52	L-14-120-2-C	11
05151	32	GRNY-040-9-C	52	L-14-120-3-C	11
05153	32	GRNY-052-0-C	52	L-14-120-4-C	11
05163	32	GRNY-052-9-C	52	L-14-120-5-C	11
05165	32	GRNY-062-0-C	52	L-14-120-6-C	11
05167	32	GRNY-062-9-C	52	L-14-120-9-C	9
05169	32	GRNY-085-0-C	52	L-14-40-0-C	8
05171	32	GRNY-085-9-C	52	L-14-40-0-D	8
05173	32	GRNY-100-0-C	52	L-14-40-2-C	10
05183	32	GRNY-100-9-C	52	L-14-40-3-C	10
05185	32	GRNY-125-0-C	52	L-14-40-4-C	10

Index

Cat. No.	Page	Cat. No.	Page	Cat. No.	Page
L-14-40-5-C	10	L-5-30-9-M	8	L-8-40-5-C	10
L-14-40-6-C	10	L-5-30MH-0-C	13	L-8-40-6-C	10
L-14-40-9-C	8	L-5-30MH-0-M	13	L-8-40-9-C	8
L-14-40-9-D	8	L-5-30MH-9-C	13	L-8-40-9-M	8
L-14-50-0-C	9	L-5-30MH-9-M	13	MPNY-1000-9-C	14
L-14-50-0-D	9	L-6-18-0-C	8	MPNY-1000A-0-C	14
L-14-50-2-C	11	L-6-18-0-M	8	MPNY-1000A-9-C	14
L-14-50-3-C	11	L-6-18-2-C	10	MPNY-750-9-C	14
L-14-50-4-C	11	L-6-18-3-C	10	MPNY-750A-0-C	14
L-14-50-5-C	11	L-6-18-4-C	10	MPNY-750A-9-C	14
L-14-50-6-C	11	L-6-18-5-C	10	MYNY-1000-0-C	14
L-14-50-9-C	9	L-6-18-6-C	10	MYNY-750-0-C	14
L-14-50-9-D	9	L-6-18-9-C	8	S1250PK-0	57
L-14-50-9-L	9	L-6-18-9-M	8	S1250PWL-0	57
L-18-120-0-L	9	L-7-50-0-C	9	S125PM-0	57
L-18-120-9-L	9	L-7-50-0-M	9	S1750PT-0	57
L-24-120-0-L	9	L-7-50-2-C	11	S2000PT-0	57
L-24-120-0-Q	9	L-7-50-3-C	11	S2000PWL-0	57
L-24-120-9-L	9	L-7-50-4-C	11	S250PM-0	57
L-24-120-9-Q	9	L-7-50-5-C	11	S250PT-0	57
L-24-175-0-L	9	L-7-50-6-C	11	S500PC-0	57
L-24-175-9-L	9	L-7-50-9-C	9	S500PD-0	57
L-28-120-0-L	9	L-7-50-9-M	9	S500PWL-0	57
L-28-120-9-L	9	L-7-50MH-0-C	13	S750PC-0	57
L-28-250-0-L	9	L-7-50MH-0-M	13	S750PK-0	57
L-36-175-0-L	9	L-7-50MH-9-C	13	SRNY-187-9-C	51
L-36-175-9-L	9	L-7-50MH-9-M	13	SRPE-1000-0-C	51
L-4-18-0-C	8	L-7-50PM-0-C	12	SRPE-1000-9-C	51
L-4-18-0-M	8	L-7-50PM-0-D	12	SRPE-125-0-C	51
L-4-18-2-C	10	L-7-50PM-9-C	12	SRPE-125-9-C	51
L-4-18-3-C	10	L-8-120-0-C	9	SRPE-187-0-C	51
L-4-18-4-C	10	L-8-120-9-C	9	SRPE-187-9-C	51
L-4-18-5-C	10	L-8-18-0-C	8	SRPE-250-0-C	51
L-4-18-6-C	10	L-8-18-0-M	8	SRPE-250-9-C	51
L-4-18-9-C	8	L-8-18-2-C	10	SRPE-375-0-C	51
L-4-18-9-M	8	L-8-18-3-C	10	SRPE-375-9-C	51
L-48-175-0-L	9	L-8-18-4-C	10	SRPE-500-0-C	51
L-48-175-9-L	9	L-8-18-5-C	10	SRPE-500-9-C	51
L-5-30-0-C	8	L-8-18-6-C	10	SRPE-625-0-C	51
L-5-30-0-M	8	L-8-18-9-C	8	SRPE-625-9-C	51
L-5-30-2-C	10	L-8-18-9-M	8	SRPE-750-0-C	51
L-5-30-3-C	10	L-8-40-0-C	8	SRPE-750-9-C	51
L-5-30-4-C	10	L-8-40-0-M	8	SX-25TB	36
L-5-30-5-C	10	L-8-40-2-C	10	TY1.5D[][_]6	33
L-5-30-6-C	10	L-8-40-3-C	10	TY15MC	35
L-5-30-9-C	8	L-8-40-4-C	10	TY1D[][_]6	33

Index

Cat. No.	Page	Cat. No.	Page	Cat. No.	Page
TY1MC	35	TYD1X4NP[_]6	23	TYD3X4NP[_]6	23
TY2D[_][_]6	33	TYD1X4RP[_]6	29	TYD3X4RP[_]6	29
TY2MC	35	TYD1X4SP[_]6	27	TYD3X4SP[_]6	27
TY2X1WHW6	25	TYD1X4WP[_]6	25	TYD3X4WP[_]6	25
TY2X2WHW6	25	TYD25X2NP[_]6	23	TYD3X5NP[_]6	23
TY2X3WHW6	25	TYD25X2SP[_]6	27	TYD3X5SP[_]6	27
TY2X4WHW6	25	TYD25X2WP[_]6	25	TYD3X5WP[_]6	25
TY3D[_][_]6	33	TYD25X3NP[_]6	23	TYD4X15RP[_]6	29
TY3MC	35	TYD25X3SP[_]6	27	TYD4X15SP[_]6	27
TY4D[_][_]6	33	TYD25X3WP[_]6	25	TYD4X15WP[_]6	25
TY5D[_][_]6	33	TYD25X4NP[_]6	23	TYD4X2NP[_]6	23
TYCS[_]6	34	TYD25X4SP[_]6	27	TYD4X2RP[_]6	29
TYD15X15NP[_]6	23	TYD25X4WP[_]6	25	TYD4X2SP[_]6	27
TYD15X15RP[_]6	29	TYD2X15NP[_]6	23	TYD4X2WP[_]6	25
TYD15X15SP[_]6	27	TYD2X15RP[_]6	29	TYD4X3NP[_]6	23
TYD15X15WP[_]6	25	TYD2X15SP[_]6	27	TYD4X3RP[_]6	29
TYD15X1NP[_]6	23	TYD2X15WP[_]6	25	TYD4X3SP[_]6	27
TYD15X1SP[_]6	27	TYD2X1NP[_]6	23	TYD4X3WP[_]6	25
TYD15X1WP[_]6	25	TYD2X1SP[_]6	27	TYD4X4NP[_]6	23
TYD15X2NP[_]6	23	TYD2X1WP[_]6	25	TYD4X4RP[_]6	29
TYD15X2RP[_]6	29	TYD2X2NP[_]6	23	TYD4X4SP[_]6	27
TYD15X2SP[_]6	27	TYD2X2RP[_]6	29	TYD4X4WP[_]6	25
TYD15X2WP[_]6	25	TYD2X2SP[_]6	27	TYD4X5NP[_]6	23
TYD15X3NP[_]6	23	TYD2X2WP[_]6	25	TYD4X5SP[_]6	27
TYD15X3RP[_]6	29	TYD2X3NP[_]6	23	TYD4X5WP[_]6	25
TYD15X3SP[_]6	27	TYD2X3RP[_]6	29	TYD6X4SP[_]6	27
TYD15X3WP[_]6	25	TYD2X3SP[_]6	27	TYD6X4WP[_]6	25
TYD15X4NP[_]6	23	TYD2X3WP[_]6	25	TYD75X15NP[_]6	23
TYD15X4RP[_]6	29	TYD2X4NP[_]6	23	TYD75X15SP[_]6	27
TYD15X4SP[_]6	27	TYD2X4RP[_]6	29	TYD75X15WP[_]6	25
TYD15X4WP[_]6	25	TYD2X4SP[_]6	27	TYD75X1SP[_]6	27
TYD1X15NP[_]6	23	TYD2X4WP[_]6	25	TYD75X1WP[_]6	25
TYD1X15RP[_]6	29	TYD2X5NP[_]6	23	TYD75X2SP[_]6	27
TYD1X15SP[_]6	27	TYD2X5SP[_]6	27	TYD75X2WP[_]6	25
TYD1X15WP[_]6	25	TYD2X5WP[_]6	25	TYJC[_]6	34
TYD1X1NP[_]6	23	TYD3X1NP[_]6	23	TYWRC	35
TYD1X1SP[_]6	27	TYD3X1SP[_]6	27	TYWRG	35
TYD1X1WP[_]6	25	TYD3X1WP[_]6	25	UMC	33
TYD1X2NP[_]6	23	TYD3X2NP[_]6	23		
TYD1X2RP[_]6	29	TYD3X2RP[_]6	29		
TYD1X2SP[_]6	27	TYD3X2SP[_]6	27		
TYD1X2WP[_]6	25	TYD3X2WP[_]6	25		
TYD1X3NP[_]6	23	TYD3X3NP[_]6	23		
TYD1X3RP[_]6	29	TYD3X3RP[_]6	29		
TYD1X3SP[_]6	27	TYD3X3SP[_]6	27		
TYD1X3WP[_]6	25	TYD3X3WP[_]6	25		

Additional information

ABB has made every attempt to ensure the accuracy and reliability of the contents of this document. However, all content is provided for general informational purposes only, and ABB makes no guaranty or warranty, express or implied, as to the accuracy of any technical content, or that the information contained in this publication will be error free and all such guarantees or warranties are expressly disclaimed. ABB may change or modify the contents at any time, without prior notice. We reserve all rights in this document and in the subject matter and illustrations contained therein. Any reproduction or utilization of its contents — in whole or in parts — is forbidden without prior written consent of ABB.



—
US

ABB Installation Products
Electrification Business
860 Ridge Lake Blvd.
Memphis, TN 38120
+1 901-252-5000