



---

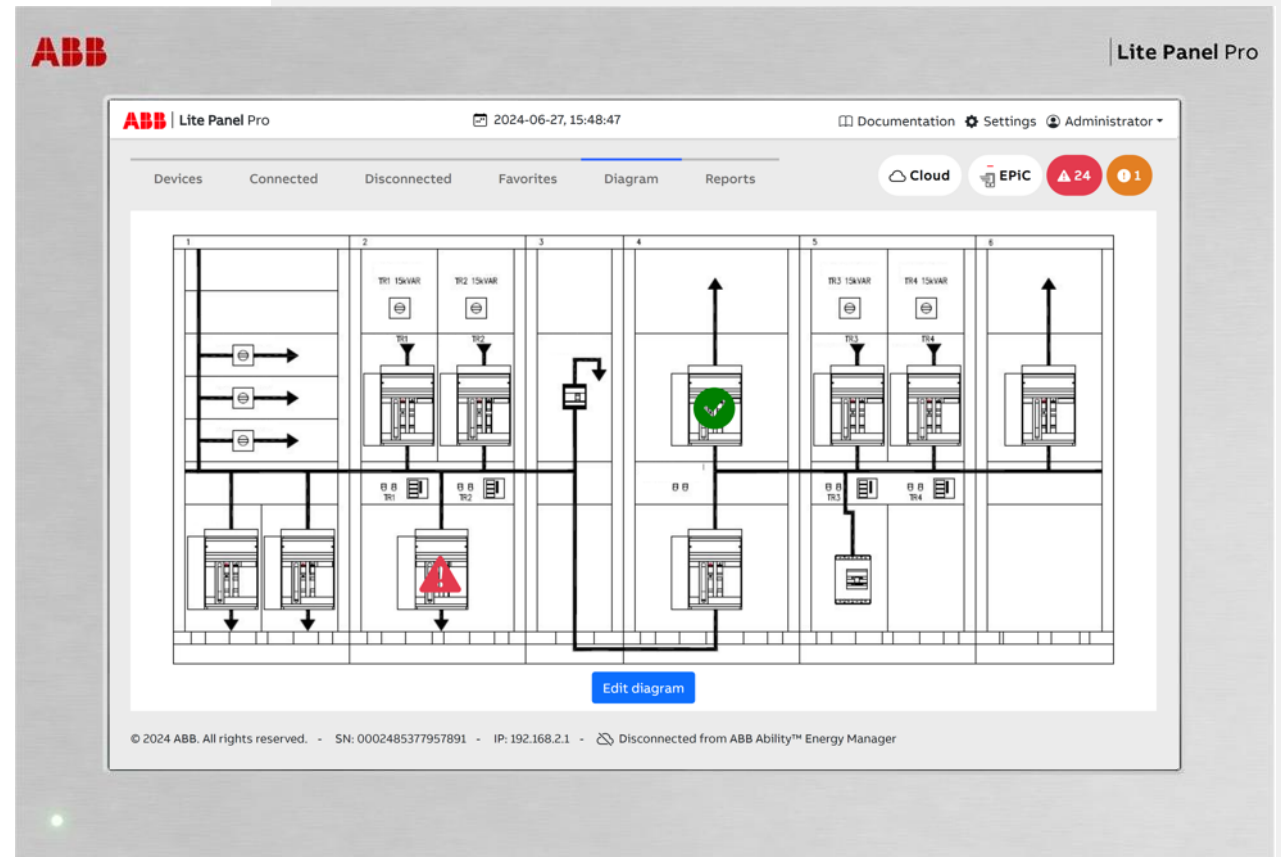
## Lite Panel Pro

Connection and monitoring for Low Voltage Devices

# Lite Panel Pro

## Connection and monitoring for Low Voltage Devices

ABB Lite Panel Pro is the state of the art in monitoring, offering a versatile switchboard HMI with a large touchscreen display and an intuitive interface.



---

# Lite Panel Pro

## Value Proposal



**Do you have to check the status of all switchboard devices one by one?**

Lite Panel Pro provides one dashboard for all your switchboard devices, so you can check their status in a unified manner either locally on-premise or by cloud.



**Do you seek for safer interaction with the switchboard away from the power sections?**

Lite Panel Pro allows a safe access to HMI (Human Machine Interface), from the resistive touchscreen (glove friendly) or via any computer on the local network.



**Do you struggle to retrieve power quality measurements for switchboard devices?**

Lite Panel Pro drills down all power quality data points from all enabled devices using a single interface so you can easily access their measurements.



**Do you need to troubleshoot past events from switchboard devices?**

With Lite Panel Pro go back in time and review past events thanks to local data storage.



**Do you need to improve awareness on energy usage for your switchboard?**

Lite Panel Pro breaks down your energy consumption based on specific period, device by device.

---

# Lite Panel Pro

## Value Proposal



### Do you find complex the installation of a switchboard HMI?

Lite Panel Pro has a Plug&Play installation that saves more than 4 times the components and wirings compared to traditional market benchmarks.



### Does your installation have third-party devices (brown field installation)?

Lite Panel Pro supports a wide range of third-party devices (no coding required).



### Do you struggle with complex and time-consuming commissioning of switchboard HMIs?

Lite Panel Pro cuts down commissioning time from hours to mere minutes (devices are automatically discovered and pre-mapped).



### Do you need to remotely monitor your switchboard anytime and anywhere?

Lite Panel Pro grants access to our cloud offering (ABB Ability™ Energy Manager) so you can monitor your switchboard anywhere.



### Do you need to comply with strong cybersecurity requirements?

Lite Panel Pro is designed and certified to operate with cybersecurity at its core, following the stringent ABB standards.

# Lite Panel Pro

Design the innovation



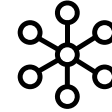
## Versatile

Versatile switchboard panel display  
able to monitor and control  
connected Low Voltage devices



## Efficient

Energy efficiency granted by ABB  
Ability™ Energy Manager ready



## Flexible

Flexibility to integrate 3rd party  
devices based on templates  
enabling brown-field installations



## Innovative

Future-proof hardware supporting  
product evolution with new  
software-enabled functionalities



## Accessible

Ease of use with large display  
in-line with market  
requirements

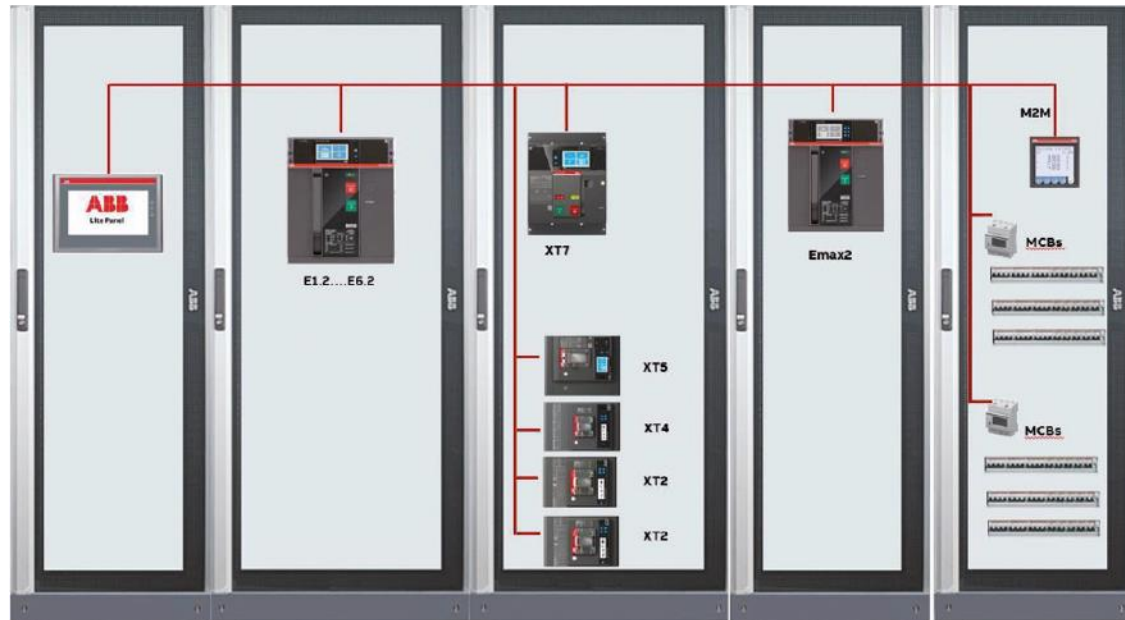


## Easy

Simplified commissioning of Low  
Voltage products

# Customer story

## Use case



## Local monitoring and control of Low Voltage products from a switchboard panel display

- **Cloud ready:** ABB Ability™ Energy Manager
- **Native support** of ABB Low Voltage products
- **Support of third -party devices** based on templates
- **Compatible** with local supervision systems (*SCADA, BMS*)
- **Global market coverage** enabled by *IEC and UL certification*
- **Simplified commissioning** via HMI or digital tools (*web-browser, EPiC*)

# Architecture

Example of typical architecture



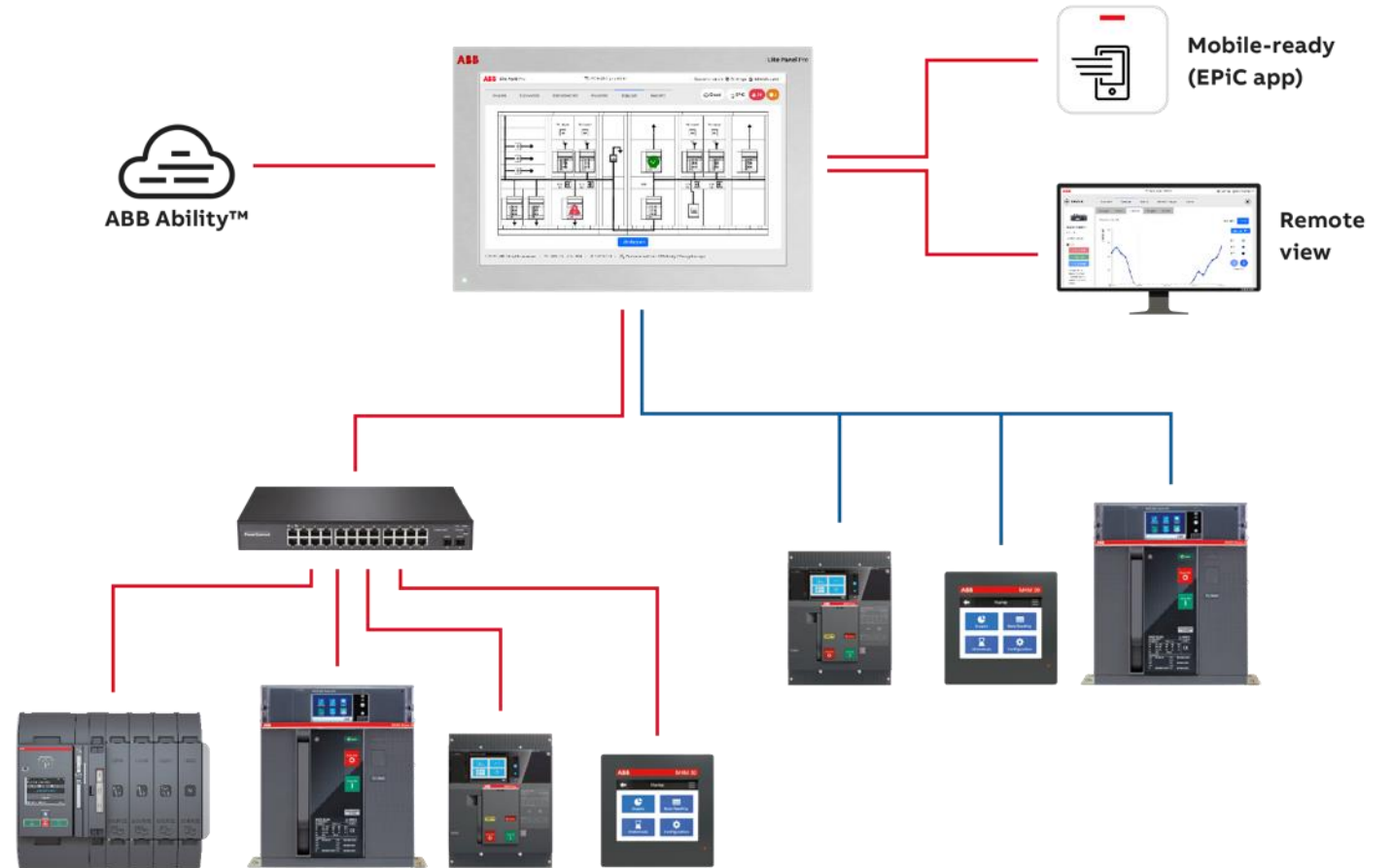
Monitoring of **ABB Modbus** RTU and TCP devices is supported, as well as some third-party devices via templates



Lite Panel Pro can connect to **ABB Ability™ Energy Manager** without the need of additional hardware



Local supervision systems are supported via the protocol translation functionality (Modbus RTU to TCP)

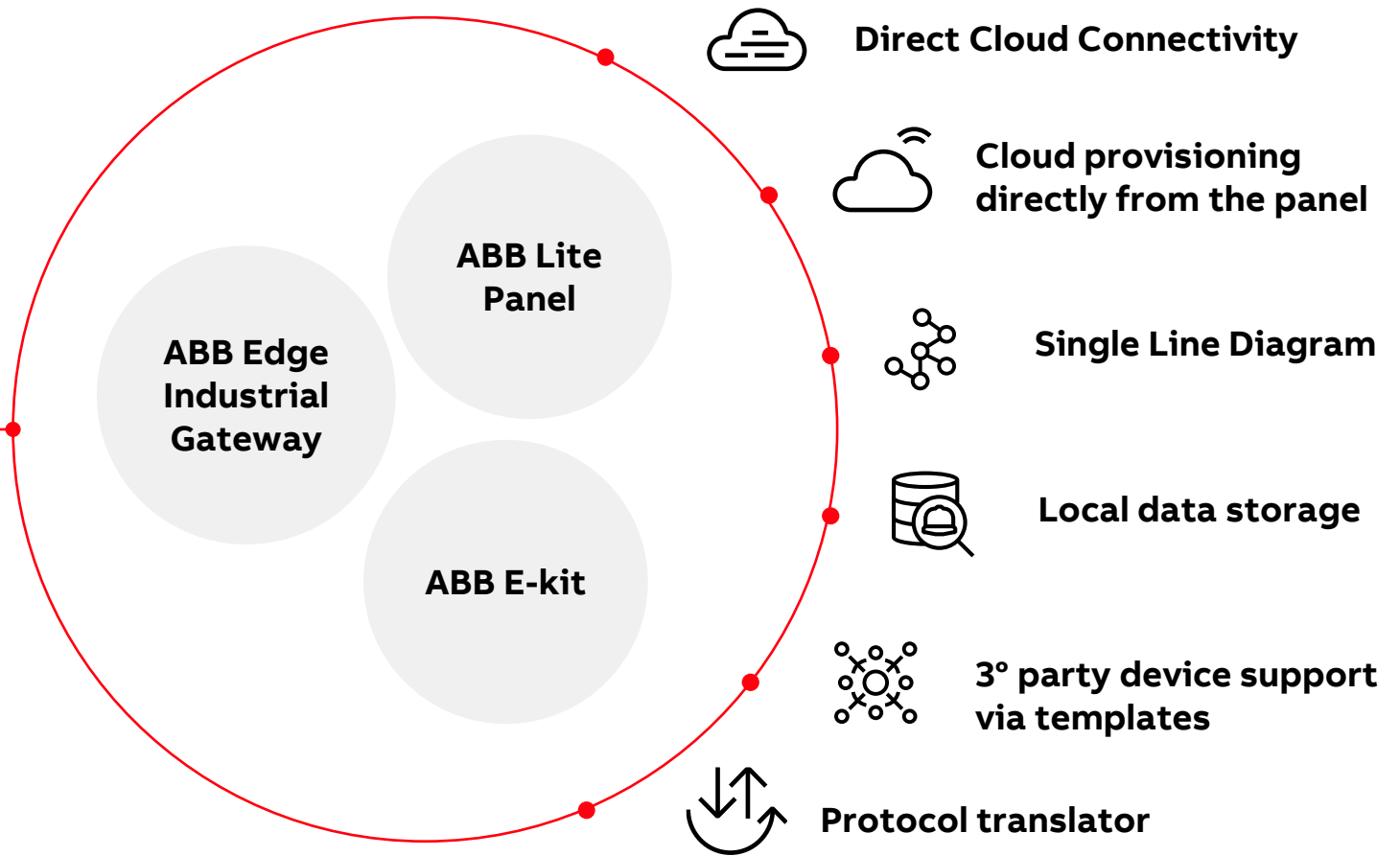


# Lite Panel Pro: Key Functionalities

From Local Device Monitoring to Energy Management in the cloud



**One Panel,  
a multitude  
of features**





# Main functionalities

## Simplified commissioning & Real-time monitoring

### Support of up to 90 devices (TCP+RTU)

Out of which max 30 Modbus  
RTU and 20 third party devices

### Protocol translator

All devices connected via  
Modbus RTU to Lite Panel Pro  
can be reached via Modbus TCP  
from external systems  
(ex. SCADA, BMS)

### Remote operation

Remote opening and closing of  
ABB breakers

### Simplified commissioning

Automatic scanning and  
identification of ABB devices\*

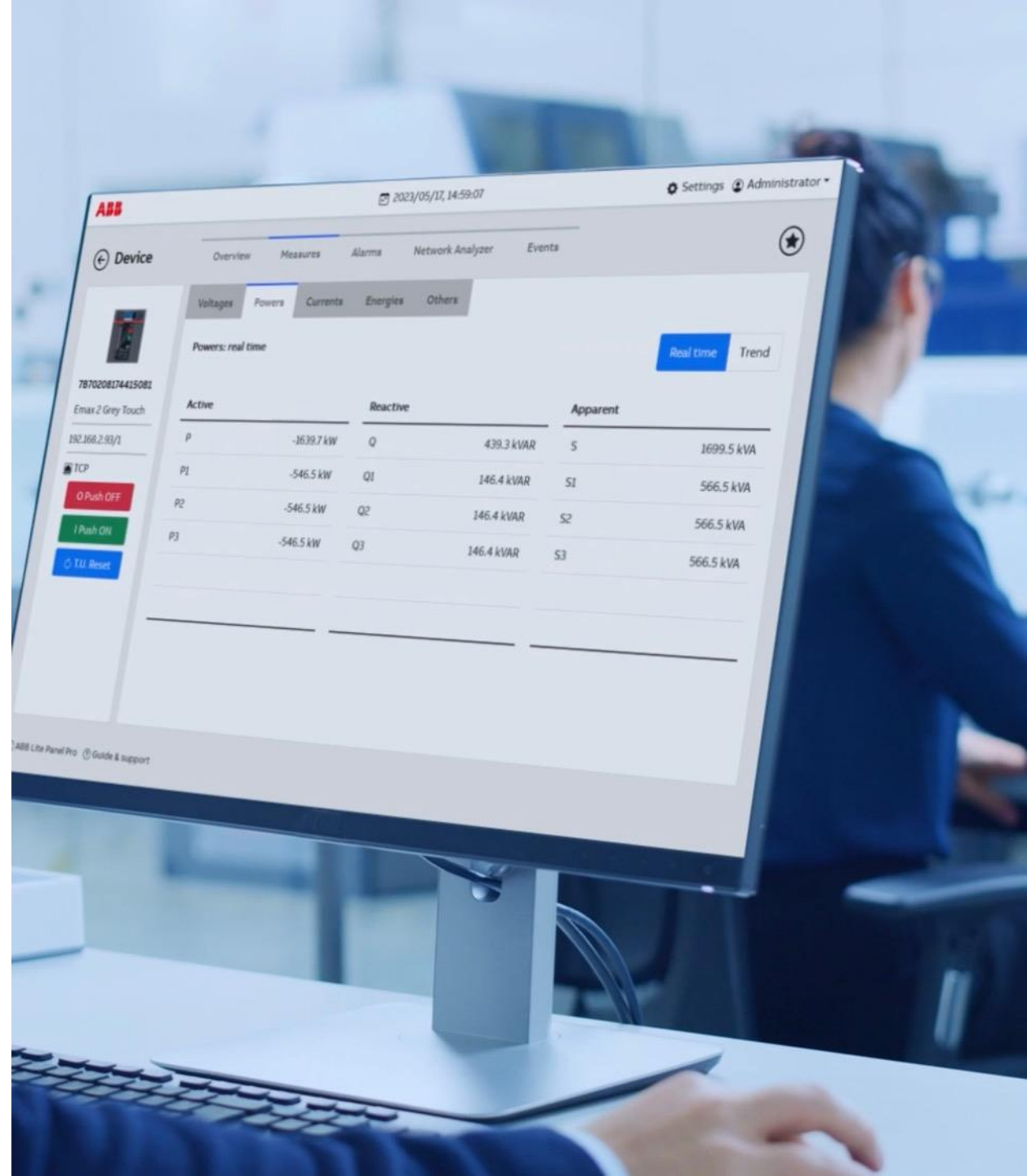
### Real-time monitoring

Voltages, currents, power, energy,  
harmonics, frequency, power  
factor, alarms & warnings, etc.

### Historical data storage and visualization

Up to 1 year of data storage for  
90 devices, more when less devices  
are connected

\* Excluding 3° party devices



# Key Values



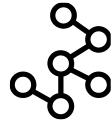
## Integrated webserver

All functionalities can be accessed remotely from any computer on the same network for a more convenient operation



## Reports

On-demand and scheduled reports are available (daily/weekly/monthly)



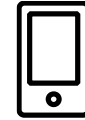
## Single Line Diagram

Users can upload a single line diagram and tag connected devices to keep an eye on the whole switchboard



## Cloud ready

Provisioning of all connected devices to ABB Ability Energy Manager is possible directly from the panel, without the need for extra hardware (gateway)



## Mobile ready

EPiC Mobile App is supported via the provided WiFi dongle

# Supported devices at launch time

*Further device support will be added via  
FW upgrade in the coming months*

Device Family	Models/Electronic unit supported
Emax 2	Ekip LCD, Ekip Touch
Ekip Up/Ekip Up+	Ekip Touch
New Emax	PR122, PR123, PR123/DC
Tmax XT	Ekip LSIG, LSI, M-LRIU, E-LSIG
Tmax XT2/XT4/XT5/XT7	Ekip Touch
Tmax T4/T5/T7	PR223DS, PR223EF
Tmax T4	PR222/DS
Tmax T5	Ekip E-LSIG
Tmax T7	PR332, PR333
TruOne®	LCD, Touch

Device Family	Models/Electronic unit supported
Slim line XR ITS 2.1	
Ekip Signaling Modbus TCP	
BM300	
IM300-U, IM300-I	
IM301/IM302/IM303	
EM400	
M2M	RTU, TCP
M4M	20, 30
EQMeter	

# Marketing tools

## Documentation and website



Lite Panel Pro  
**Website**

[link](#)



Lite Panel Pro  
**Brochure**

[link](#)



Lite Panel Pro  
**User Manual**

[EN](#) / [IT](#) / [DE](#) /  
[ES](#) / [FR](#)



Lite Panel Pro  
**Kit sheet**

[link](#)



Lite Panel Pro  
**EU Declaration of Conformity**

[link](#)



Lite Panel Pro  
**Teaser VIDEO**

[link](#)



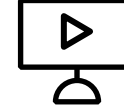
Lite Panel Pro  
**Promotional VIDEO**

*Coming Soon*



Lite Panel Pro  
**How to VIDEO**  
(~5 min.)

[link](#)



Lite Panel Pro  
**VIDEO Tutorial**  
(~25 min.)

[link](#)

**ABB**