

BROCHURE

BlueKote[®] form 7 and form 8 conduit outlet bodies

T&B Fittings



BlueKote® form 7 and form 8 conduit outlet bodies

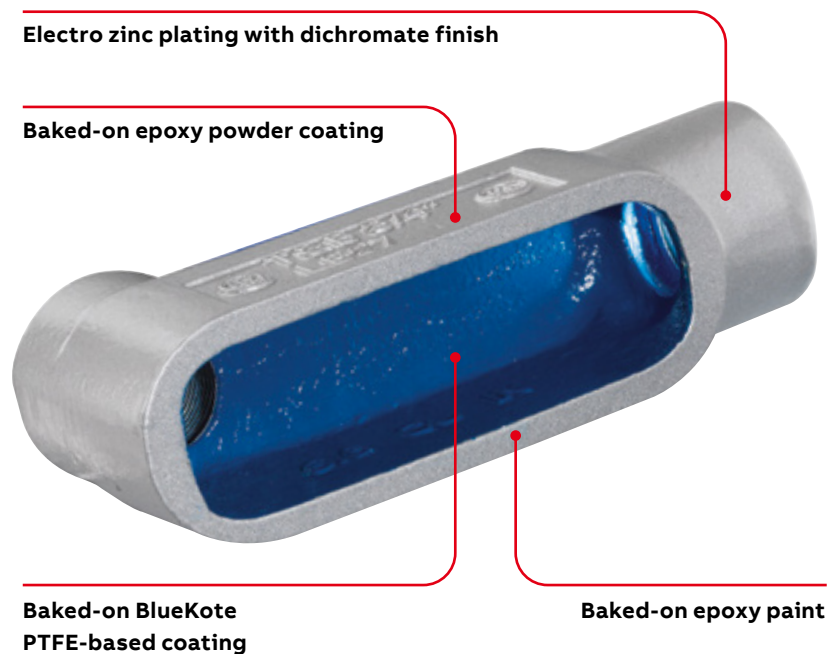
Faster, easier wire pulling and extra corrosion resistance.

Why take a chance of damaging your wires while pulling them through conduit bodies?

The T&B® Fittings BlueKote form 7 and form 8 conduit outlet bodies outperform the competition in ease of wire pulling, corrosion resistance and more. These conduit outlet bodies feature a slick, PTFE-based BlueKote® interior finish to make wire pulling faster and easier than ever before and eliminate rough internal surfaces that can damage wires. To safeguard against corrosion, these conduit outlet bodies incorporate not one, not two, but three layers of protection — including two layers of epoxy coating. And to reduce inventory and provide up-front cost savings, both steel and iron covers come standard with a neoprene gasket.

BlueKote PTFE-based internal finish

- Provides a slick, easy-glide internal surface
- Significantly lowers the amount of force required to pull wires
- Reduces installation time and the risk of installer strain
- Eliminates rough internal surfaces that can cut into cable jacket, insulation and conductors during pulling





- 01 Bare conduit body
- 02 Layer 1
- 03 Layer 2
- 04 Layer 3
- 05 Layer 4

Four-layer protection for the ultimate in corrosion resistance

Bare conduit body — Left in its raw state, all cast iron conduit bodies will rapidly corrode. Anytime the outer finish is compromised, corrosion will attack and propagate throughout the fitting.

Layer 1 — Electro zinc plating with dichromate finish. This layer acts as a durable corrosion inhibitor. It protects the cast iron alloy conduit body from rust, and unlike painted coatings, prevents rust creep. This layer is an industry standard for corrosion resistance.

Layer 2 — Baked-on epoxy powder coating. Epoxy is one of the most corrosion-resistant finishes available. This layer is powder coated, because unlike a conventionally painted surface, a powder-coated finish eliminates pinholes, cracks and crevices, is scratch resistant and holds up better against harsh chemicals.

Layer 3 — Baked-on epoxy paint. A final layer of epoxy paint provides the conduit outlet body with even more corrosion resistance.

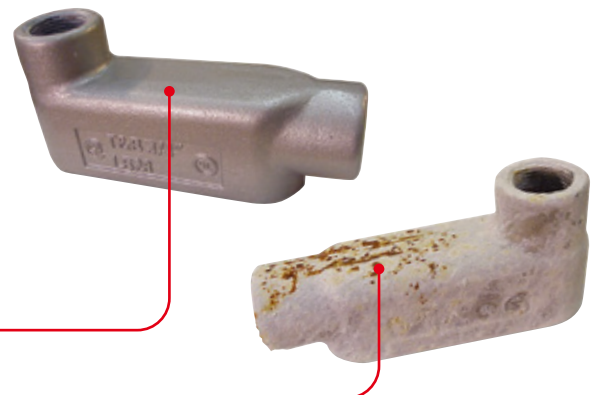
Layer 4 — Baked-on BlueKote® PTFE-based coating. The BlueKote finish inside the conduit outlet body provides a slick surface for easier wiring pulling. It also provides more corrosion resistance on the inside of the conduit body by adding an additional layer of protection.

Test result

The T&B Fittings BlueKote conduit outlet body and a leading competitor's conduit outlet body after a seven-day 5% salt-fog chamber test.

The T&B Fittings BlueKote conduit outlet body still has a glossy sheen and no evidence of salt adhesion or penetration.

The competitor's conduit outlet body has salt adhesion and significant rusting.



BlueKote® conduit bodies

Sample specifications



Sample specifications for conduit outlet bodies:

- 1 For protection against corrosion, conduit bodies are to have an electro-galvanized finish, followed by a baked-on powder epoxy finish to a minimum of 2.5 mils thickness, and at least one additional baked layer of epoxy applied with an additional 2.0 mils thickness or better.
- 2 To aid in wire pull and reduce wire damage, the interior of the conduit bodies is to include a baked-on PTFE-based coating of 2.0 mils minimum thickness.

BlueKote LU® universal conduit elbow replaces LL, LR, LB and C conduit bodies — a 4-to-1 SKU reduction



The BlueKote LU universal conduit elbow truly goes almost anywhere a conduit elbow is needed. It enables you to run fiber optic cable in a ¾" system — and maintain cable bend radius — instead of a 2" system, representing significant savings in conduit, bodies and labor.

- Radius is the same as bent conduit — pull wire through the body
- Angled cover port — easier wire pulling and uses standard covers
- UL listed as an enclosure — splices allowed inside the LU
- Rated for 40% wire fill — avoids conduit system de-rating

BlueKote® form 7 conduit bodies

Ordering information

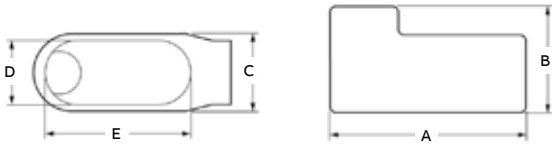


LB Form 7 BlueKote conduit bodies



Cat. no.	Hub size (in.)	Dimensions (in.)						Cu. in.
		A	B	C	D	E		
LB17	1/2	4.60	2.20	1.35	.95	3.20	4.0	
LB27	3/4	5.25	2.40	1.65	1.15	3.80	6.6	
LB37	1	6.00	2.65	1.80	1.35	4.55	10.6	
LB47	1 1/4	6.45	3.20	2.20	1.80	5.00	18.8	
LB57	1 1/2	7.25	3.90	2.45	2.05	5.45	26.4	
LB67	2	8.30	4.45	3.10	2.45	6.40	51.0	
LB77	2 1/2	10.55	5.20	4.25	3.60	8.40	102.0	
LB87	3	10.55	5.95	4.25	3.60	8.40	132.0	
LB97	3 1/2	12.85	6.70	5.25	4.55	10.25	210.0	
LB107	4	12.85	7.20	5.25	4.55	10.25	243.0	

Diagrams

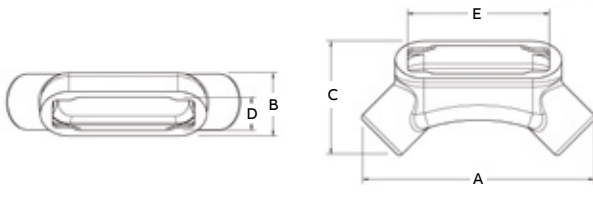


LU® Form 7 BlueKote conduit bodies



Cat. no.	Hub size (in.)	Dimensions (in.)						Cu. in.
		A	B	C	D	E		
LU17	1/2	5.54	1.45	2.72	.95	3.20	4.8	
LU27	3/4	6.22	1.70	3.07	1.15	3.80	7.6	
LU37	1	7.34	1.97	3.52	1.35	4.55	13.4	
LU47	1 1/4	8.40	2.47	4.21	1.80	5.00	23.0	
LU57	1 1/2	8.95	2.72	4.44	2.05	5.45	28.3	
LU67	2	10.61	3.43	5.43	2.45	6.40	56.0	

Diagrams

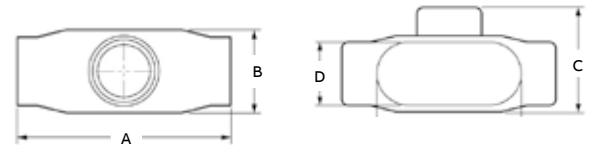


T Form 7 BlueKote conduit bodies



Cat. no.	Hub size (in.)	Dimensions (in.)						Cu. in.
		A	B	C	D	E		
T17	1/2	5.60	1.80	2.35	.95	3.20	6.0	
T27	3/4	6.20	2.00	2.60	1.15	3.80	9.1	
T37	1	7.35	2.30	3.10	1.35	4.55	16.9	
T47	1 1/4	7.30	2.30	3.05	1.80	5.00	19.3	
T57	1 1/2	8.60	2.60	3.80	2.05	5.45	27.5	
T67	2	9.50	3.20	4.25	2.45	6.40	50.0	
T77	2 1/2	12.10	3.65	5.80	3.60	8.40	102.0	
T87	3	12.10	4.40	5.80	3.60	8.40	132.0	
T97	3 1/2	14.65	4.90	7.05	4.55	10.25	210.0	
T107	4	14.65	5.40	7.05	4.55	10.25	243.0	

Diagrams

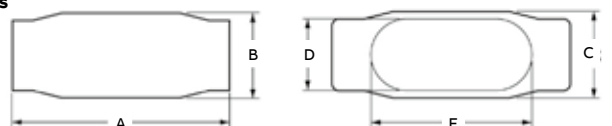


C Form 7 BlueKote conduit bodies



Cat. no.	Hub size (in.)	Dimensions (in.)						Cu. in.
		A	B	C	D	E		
C17	1/2	5.45	1.40	1.45	.95	3.20	4.0	
C27	3/4	6.05	1.60	1.65	1.15	3.80	6.6	
C37	1	6.75	1.90	1.80	1.35	4.55	10.6	
C47	1 1/4	7.30	2.30	2.20	1.80	5.00	18.8	
C57	1 1/2	8.60	2.60	2.45	2.05	5.45	26.4	
C67	2	9.50	3.20	3.05	2.45	6.40	51.0	
C77-TB	2 1/2	12.10	3.65	4.25	3.60	8.40	102.0	
C87	3	12.10	4.40	4.25	3.60	8.40	132.0	

Diagrams



BlueKote® form 7 conduit bodies

Ordering information

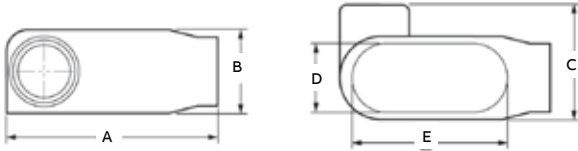


LL Form 7 BlueKote conduit bodies



Cat. no.	Hub size (in.)	Dimensions (in.)						Cu. in.
		A	B	C	D	E		
LL17	1/2	4.60	1.40	1.45	.95	3.20	4.0	
LL27	3/4	5.25	1.60	1.65	1.15	3.80	6.6	
LL37	1	6.00	1.90	2.60	1.35	4.55	10.6	
LL47	1 1/4	6.45	2.30	3.05	1.80	5.00	18.6	
LL57	1 1/2	7.90	2.60	3.80	2.05	5.45	26.4	
LL67	2	8.30	3.20	4.25	2.45	6.40	51.0	
LL77	2 1/2	10.55	3.65	5.80	3.60	8.40	102.0	
LL87	3	10.55	4.40	5.80	3.60	8.40	132.0	
LL97	3 1/2	12.85	4.90	7.03	4.55	10.25	210.0	
LL107	4	12.85	5.40	7.03	4.55	10.25	243.0	

Diagrams

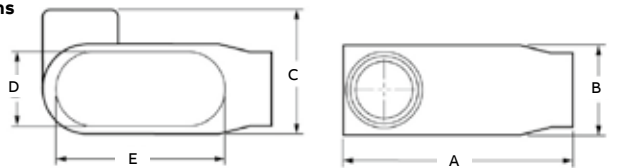


L Form 7 BlueKote conduit bodies



Cat. no.	Hub size (in.)	Dimensions (in.)					
		A	B	C	D	E	
L17-TB	1/2	4.60	1.40	1.45	.95	3.20	
L27-TB	3/4	5.25	1.60	1.65	1.15	3.80	
L37-TB	1	6.00	1.90	2.60	1.35	4.55	
L47-TB	1 1/4	6.45	2.30	3.05	1.80	5.00	
L57-TB	1 1/2	7.90	2.60	3.80	2.05	5.45	
L67-TB	2	8.30	3.20	4.25	2.45	6.40	

Diagrams

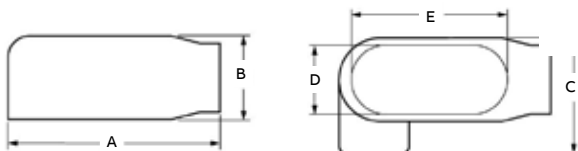


LR Form 7 BlueKote conduit bodies



Cat. no.	Hub size (in.)	Dimensions (in.)						Cu. in.
		A	B	C	D	E		
LR17	1/2	4.60	1.40	1.45	.95	3.20	4.0	
LR27	3/4	5.25	1.60	1.65	1.15	3.80	6.6	
LR37	1	6.00	1.90	2.60	1.35	4.55	10.6	
LR47	1 1/4	6.45	2.30	3.05	1.80	5.00	18.8	
LR57	1 1/2	7.90	2.60	3.80	2.05	5.45	26.4	
LR67	2	8.30	3.20	4.25	2.45	6.40	51.0	
LR77	2 1/2	10.55	3.65	5.80	3.60	8.40	102.0	
LR87	3	10.55	4.40	5.80	3.60	8.40	132.0	
LR97	3 1/2	12.85	4.90	7.03	4.55	10.25	210.0	
LR107	4	12.85	5.40	7.03	4.55	10.25	243.0	

Diagrams

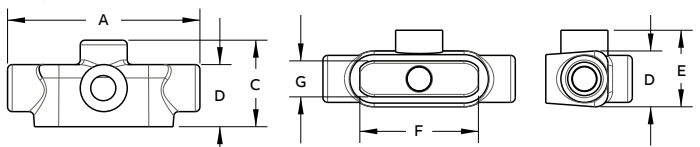


TA Form 7 BlueKote conduit bodies



Cat. no.	Hub size (in.)	Dimensions (in.)						
		A	B	C	D	E	F	G
TA17	1/2	5.57	1.80	2.57	1.62	2.34	3.19	.94
TA27	3/4	6.19	2.00	2.79	1.80	2.58	3.82	1.13
TA37	1	7.35	2.23	3.07	2.29	3.10	4.55	1.35
TA47	1 1/4	7.30	2.32	3.18	2.20	3.06	5.03	1.80
TA57	1 1/2	8.57	2.58	3.89	2.45	3.77	5.44	2.05
TA67	2	9.48	3.20	4.43	3.06	4.26	6.41	2.44

Diagrams



BlueKote® form 7 conduit bodies

Ordering information

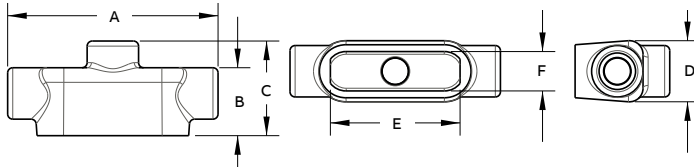


TB Form 7 BlueKote conduit bodies



Cat. no.	Hub size (in.)	Dimensions (in.)					
		A	B	C	D	E	F
TB17-TB	1/2	5.57	1.77	2.57	1.62	3.19	.94
TB27	3/4	6.19	2.00	2.79	1.80	3.82	1.13
TB37	1	7.35	2.28	3.07	2.29	4.63	1.35
TB47	1 1/4	7.30	2.32	3.18	2.20	5.03	1.80
TB57	1 1/2	8.57	2.58	3.89	2.45	5.44	2.05
TB67	2	9.48	3.20	4.43	3.06	6.41	2.44

Diagrams

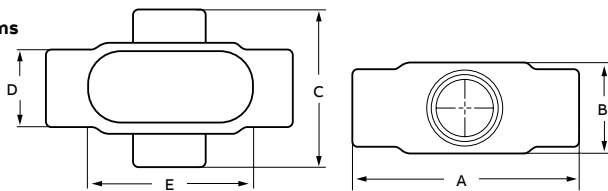


X Form 7 BlueKote conduit bodies



Cat. no.	Hub size (in.)	Dimensions (in.)					
		A	B	C	D	E	Cu. in.
X17	1/2	5.60	1.80	3.05	.95	3.20	6.0
X27	3/4	6.20	2.00	3.30	1.15	3.80	9.1
X37	1	7.35	2.30	3.80	1.35	4.55	16.9
X47	1 1/4	7.30	2.30	3.85	1.80	5.00	19.3
X57	1 1/2	8.60	2.60	5.05	2.05	5.45	27.5
X67	2	9.50	3.20	5.45	2.45	6.40	52.8

Diagrams

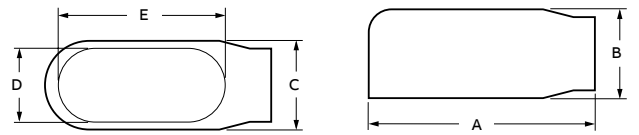


E Form 7 BlueKote conduit bodies



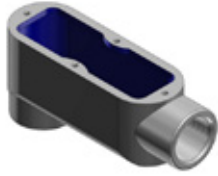
Cat. no.	Hub size (in.)	Dimensions (in.)					
		A	B	C	D	E	Cu. in.
E17	1/2	4.60	1.40	1.45	.95	3.20	6.0
E27	3/4	5.25	1.60	1.65	1.15	3.80	9.1
E37	1	6.00	1.90	1.80	1.35	4.55	16.9

Diagrams



BlueKote® form 8 conduit bodies

Ordering information

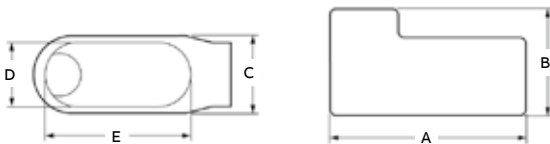


LB Form 8 BlueKote conduit bodies



Cat. no.	Hub size (in.)	Dimensions (in.)						Cu. in.
		A	B	C	D	E		
LB18	1/2	4.94	2.22	1.38	1.00	3.31	4.9	
LB28	3/4	5.56	2.44	1.56	1.19	3.31	8.0	
LB38	1	6.50	2.81	1.75	1.38	4.56	13.0	
LB448	1 1/4	7.53	3.34	2.19	1.75	5.31	23.5	
LB58	1 1/2	9.13	4.03	2.75	2.13	6.50	45.0	
LB68	2	11.00	4.41	3.75	3.00	8.56	88.0	
LB78	2 1/2	13.94	6.13	5.00	4.25	10.88	110.0	
LB888	3	13.94	6.50	5.00	4.25	10.88	110.0	
LB98	3 1/2	16.88	7.56	6.25	5.44	13.44	250.0	
LB108	4	16.88	7.81	6.25	5.44	13.44	250.0	

Diagrams

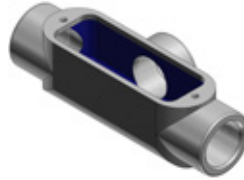
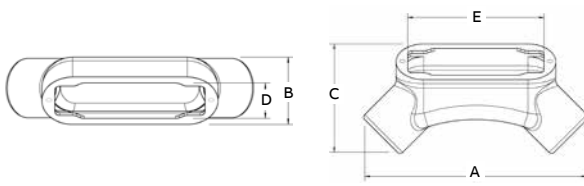


LU Form 8 BlueKote conduit bodies



Cat. no.	Hub size (in.)	Dimensions (in.)						Cu. in.
		A	B	C	D	E		
LU18	1/2	6.15	1.25	2.74	1.05	3.28	4.8	
LU28	3/4	6.92	1.50	3.1	1.25	3.93	8.3	
LU38	1	8.20	1.70	3.65	1.45	4.55	14.8	
LU448	1 1/4	9.86	2.20	4.3	1.8	5.29	27	
LU58	1 1/2	11.5	2.45	4.92	2.41	6.5	45.3	
LU68	2	13.93	2.90	6.43	3.42	8.5	111.8	

Diagrams

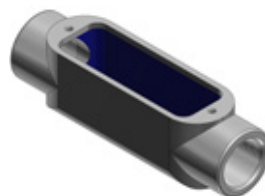
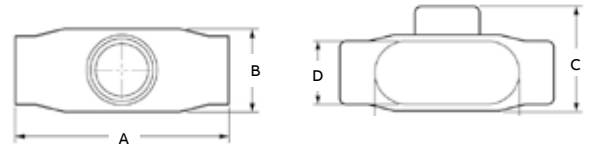


T Form 8 BlueKote conduit bodies



Cat. no.	Hub size (in.)	Dimensions (in.)						Cu. in.
		A	B	C	D	E		
T18	1/2	5.69	7.75	2.16	1.00	3.31	6.0	
T28	3/4	6.28	2.00	2.31	1.19	3.94	9.0	
T38-TB	1	7.31	2.25	2.63	1.38	4.56	15.0	
T448	1 1/4	8.50	2.63	3.16	1.75	5.31	24.0	
T58	1 1/2	10.38	2.78	4.00	2.13	6.50	46.5	
T68	2	12.25	3.56	5.00	3.00	8.56	88.0	
T78	2 1/2	15.63	4.44	6.69	4.25	10.88	110.0	
T88-TB	3	15.63	4.81	6.69	4.25	10.88	110.0	

Diagrams

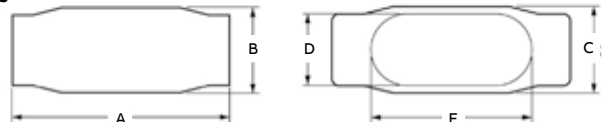


C Form 8 BlueKote conduit bodies



Cat. no.	Hub size (in.)	Dimensions (in.)						Cu. in.
		A	B	C	D	E		
C18	1/2	5.53	1.44	1.38	1.00	3.31	4.9	
C28	3/4	6.28	1.53	1.19	1.19	3.94	8.0	
C38	1	7.31	1.94	1.75	1.38	4.56	13.0	
C448	1 1/4	8.50	2.38	2.19	1.75	5.31	23.5	
C58-TB	1 1/2	10.38	2.78	2.75	2.13	6.50	45.0	
C68	2	12.25	3.56	3.75	3.00	8.56	88.0	
C78	2 1/2	15.63	4.44	5.00	4.25	10.88	110.0	
C88	3	15.63	4.81	5.00	4.25	10.88	110.0	

Diagrams



BlueKote® form 8 conduit bodies

Ordering information

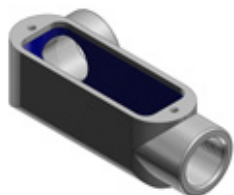
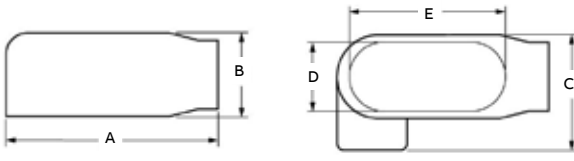


LR Form 8 BlueKote conduit bodies



Cat. no.	Hub size (in.)	Dimensions (in.)					
		A	B	C	D	E	Cu. in.
LR18	1/2	4.94	1.44	2.16	1.00	3.31	4.4
LR28	3/4	5.56	1.69	2.31	1.19	3.94	8.0
LR38	1	6.47	1.94	2.63	1.38	4.56	13.0
LR448	1 1/4	7.53	2.38	3.16	1.75	5.31	23.6
LR58	1 1/2	9.13	2.78	4.00	2.13	6.50	45.0
LR68	2	11.00	3.56	5.00	3.00	8.56	88.0
LR78	2 1/2	13.94	4.44	6.69	4.25	10.88	110.0
LR888	3	13.94	4.81	6.69	4.25	10.88	110.0

Diagrams

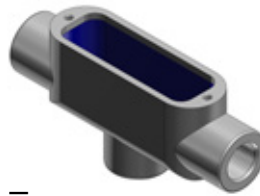
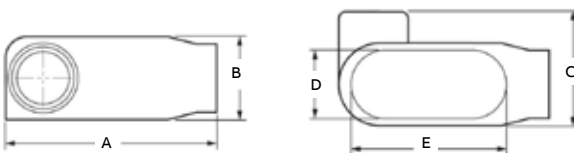


LL Form 8 BlueKote conduit bodies



Cat. no.	Hub size (in.)	Dimensions (in.)					
		A	B	C	D	E	Cu. in.
LL18	1/2	4.94	1.44	2.13	1.00	3.31	4.9
LL28	3/4	5.56	1.69	2.31	1.19	3.94	8.0
LL38	1	6.47	1.94	2.63	1.38	4.56	13.0
LL448	1 1/4	7.53	2.38	3.16	1.75	5.31	23.5
LL58	1 1/2	9.13	2.78	4.00	2.13	6.50	45.0
LL68	2	11.00	3.56	5.00	3.00	8.56	88.0
LL78	2 1/2	13.94	4.44	6.69	4.25	10.88	110.0
LL888	3	13.94	4.81	6.69	4.25	10.88	110.0

Diagrams

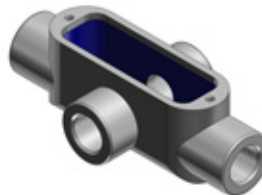
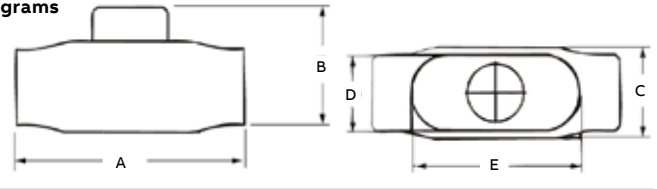


TB Form 8 BlueKote conduit bodies



Cat. no.	Hub size (in.)	Dimensions (in.)					
		A	B	C	D	E	Cu. in.
TB18	1/2	5.69	2.63	1.38	1.00	3.31	6.0
TB28	3/4	6.28	2.88	1.19	1.19	3.94	9.0
TB38	1	7.31	3.25	1.75	1.38	4.56	15.0
TB448	1 1/4	8.50	3.31	2.19	1.75	5.31	24.0
TB58	1 1/2	10.38	3.69	2.75	2.13	6.50	46.5
TB68	2	12.25	4.25	3.75	3.00	8.56	88.0

Diagrams

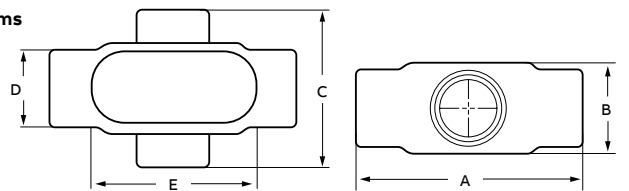


X Form 8 BlueKote conduit bodies



Cat. no.	Hub size (in.)	Dimensions (in.)					
		A	B	C	D	E	Cu. in.
X18	1/2	5.69	1.75	2.91	1.00	3.31	6.0
X28	3/4	6.28	2.00	3.06	1.38	3.94	9.0
X38	1	7.31	2.25	3.50	1.38	4.56	15.0
X448	1 1/4	8.50	2.63	4.13	1.75	5.31	24.0
X58	1 1/2	10.38	2.47	5.25	2.13	6.50	46.5
X68	2	12.25	3.56	6.25	3.00	8.56	88.0

Diagrams



BlueKote® form 7 and form 8 covers

Ordering information



Form 7 steel cover



Form 8 steel cover



Form 7 iron cover



Form 8 iron cover



Cat. number	Hub size (NPT)	Std. pkg. qty.
Form 7 stamped steel cover with neoprene gasket		
170S	½"	25
270S	¾"	25
370S	1"	20
470S	1¼"	10
570S	1½"	10
670S	2"	10
870S	2½"-3"	5
970S	3½"-4"	5
Form 8 stamped steel cover with neoprene gasket		
180	½"	25
280	¾"	25
380	1"	25
480	1¼"	10
580	1½"	10
680	2"	10
680STB	2½"-3"	5
980	3½"-4"	5
Form 7 iron cover with neoprene gasket		
170F	½"	20
270F	¾"	20
370F	1"	50
470F	1¼"	5
570F	1½"	5
670F	2"	5
870F	2½"-3"	5
970F	3½"-4"	5

Cat. number	Hub size (NPT)	Std. pkg. qty.
Form 8 iron cover with neoprene gasket		
180F	½"	20
280F	¾"	10
380F	1"	10
480F	1¼"	5
580F	1½"	5
680F	2"	5
880F	2½"-3"	5
980F	3½"-4"	5
Form 7 replacement gasket		
GASK 571	½"	50
GASK 572	¾"	50
GASK 573	1"	50
GASK 574	1¼"	5
GASK 575	1½"	5
GASK 576	2"	5
GASK 578	2½"-3"	5
GASK 579	3½"-4"	5
Form 8 replacement gasket		
GASK 581N	½"	20
GASK 582N	¾"	20
GASK 583N	1"	10
GASK 584N	1¼"	5
GASK 585N	1½"	5
GASK 586N	2"	5
GASK 588N	2½"-3"	5
GASK 589N	3½"-4"	5

BlueKote® form 7 pre-assembled conduit bodies

Includes conduit body, cover and gasket

Pre-assembled form 7 BlueKote conduit bodies

Form 7 body, gasket and cover — one number. Now you can order a conduit body, gasket and cover, pre-assembled, using one catalog number. ABB's pre-assembled cast conduit bodies help reduce transactions, eliminate the need for additional stocking bins and provide an easy inventory reduction. You'll also have less hassle with managing small parts in the truck or crib. Best of all, you can be absolutely confident that the right parts are in your hands when you need them.

T&B® Fittings conduit bodies and covers feature:

- BlueKote internal finish for faster, easier wire pulling
- Epoxy external finish for superior corrosion resistance
- Tapered NPT threads and integral bushings to protect wire insulation
- Bodies are designed with a flat back for more cubic inch capacity; the flat back also keeps the body more stable during installation, requiring fewer conduit straps

Specifications

- Bodies: Class 30 gray iron alloy
- Covers: Stamped steel with stainless steel screws
- Gaskets: Neoprene
- Finish: Conduit bodies — zinc-plating with acrylic epoxy coating and internal PTFE-based BlueKote coating
- Covers: Stamped steel zinc-plated with clear dichromate coating
- Listings/compliances: UL 514A, 514B; Fed. Spec. W-C-586D; CSA C22.2 No. 18



Pre-assembled conduit bodies, covers and gaskets



Cat. no.	Trade size (in.)	Pre-assembled products
C17CG-TB	½	C17 body, cover and gasket
C27CG-TB	¾	C27 body, cover and gasket
C37CG-TB	1	C37 body, cover and gasket
C47CG-TB	1¼	C47 body, cover and gasket
C57CG-TB	1½	C57 body, cover and gasket
C67CG-TB	2	C67 body, cover and gasket
LB17CG-TB	½	LB17 body, cover and gasket
LB27CG-TB	¾	LB27 body, cover and gasket
LB37CG-TB	1	LB37 body, cover and gasket
LB47CG-TB	1¼	LB47 body, cover and gasket
LB57CG-TB	1½	LB57 body, cover and gasket
LB67CG-TB	2	LB67 body, cover and gasket
LL17CG-TB	½	LL17 body, cover and gasket
LL27CG-TB	¾	LL27 body, cover and gasket
LL37CG-TB	1	LL37 body, cover and gasket
LL47CG-TB	1¼	LL47 body, cover and gasket
LL57CG-TB	1½	LL57 body, cover and gasket
LL67CG-TB	2	LL67 body, cover and gasket
LR17CG-TB	½	LR17 body, cover and gasket
LR27CG-TB	¾	LR27 body, cover and gasket
LR37CG-TB	1	LR37 body, cover and gasket
LR47CG-TB	1¼	LR47 body, cover and gasket
LR57CG-TB	1½	LR57 body, cover and gasket
LR67CG-TB	2	LR67 body, cover and gasket
T17CG-TB	½	T17 body, cover and gasket
T27CG-TB	¾	T27 body, cover and gasket
T37CG-TB	1	T37 body, cover and gasket
T47CG-TB	1¼	T47 body, cover and gasket
T57CG-TB	1½	T57 body, cover and gasket
T67CG-TB	2	T67 body, cover and gasket
TB17CG-TB	½	TB17 body, cover and gasket
TB27CG-TB	¾	TB27 body, cover and gasket
TB37CG-TB	1	TB37 body, cover and gasket
TB47CG-TB	1¼	TB47 body, cover and gasket
TB57CG-TB	1½	TB57 body, cover and gasket
TB67CG-TB	2	TB67 body, cover and gasket
X17CG-TB	½	X17 body, cover and gasket
X27CG-TB	¾	X27 body, cover and gasket
X37CG-TB	1	X37 body, cover and gasket
X47CG-TB	1¼	X47 body, cover and gasket
X57CG-TB	1½	X57 body, cover and gasket
X67CG-TB	2	X67 body, cover and gasket

For aluminum conduit bodies pre-assembled with covers and gaskets, request Red•Dot® D-PAK® series conduit bodies for rigid and IMC conduit.



ABB Installation Products Inc.

Electrification Business
860 Ridge Lake Blvd.
Memphis, TN 38120

electrification.us.abb.com

ABB has made every attempt to ensure the accuracy and reliability of the contents of this document. However, all content is provided for general informational purposes only, and ABB makes no guaranty or warranty, express or implied, as to the accuracy of any technical content, or that the information contained in this publication will be error free and all such guarantees or warranties are expressly disclaimed. ABB may change or modify

the contents at any time, without prior notice. We reserve all rights in this document and in the subject matter and illustrations contained therein. Any reproduction or utilization of its contents — in whole or in parts — is forbidden without prior written consent of ABB.
© 2022 ABB Installation Products Inc. and/or its affiliated companies.
All rights reserved.