

Technical Note 164

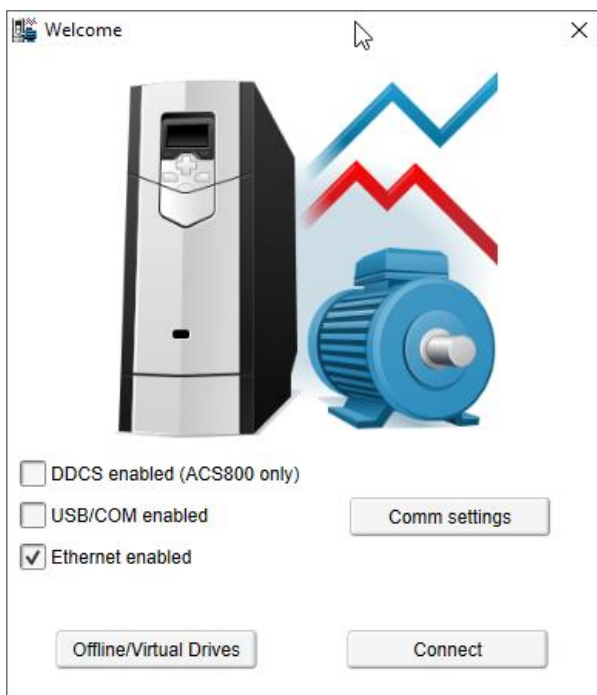
Drive Composer Pro will not connect via Ethernet

Connecting to 80 series drives via EtherNet/IP, Modbus TCP or PROFINET with Drive Composer Pro 2.8.2

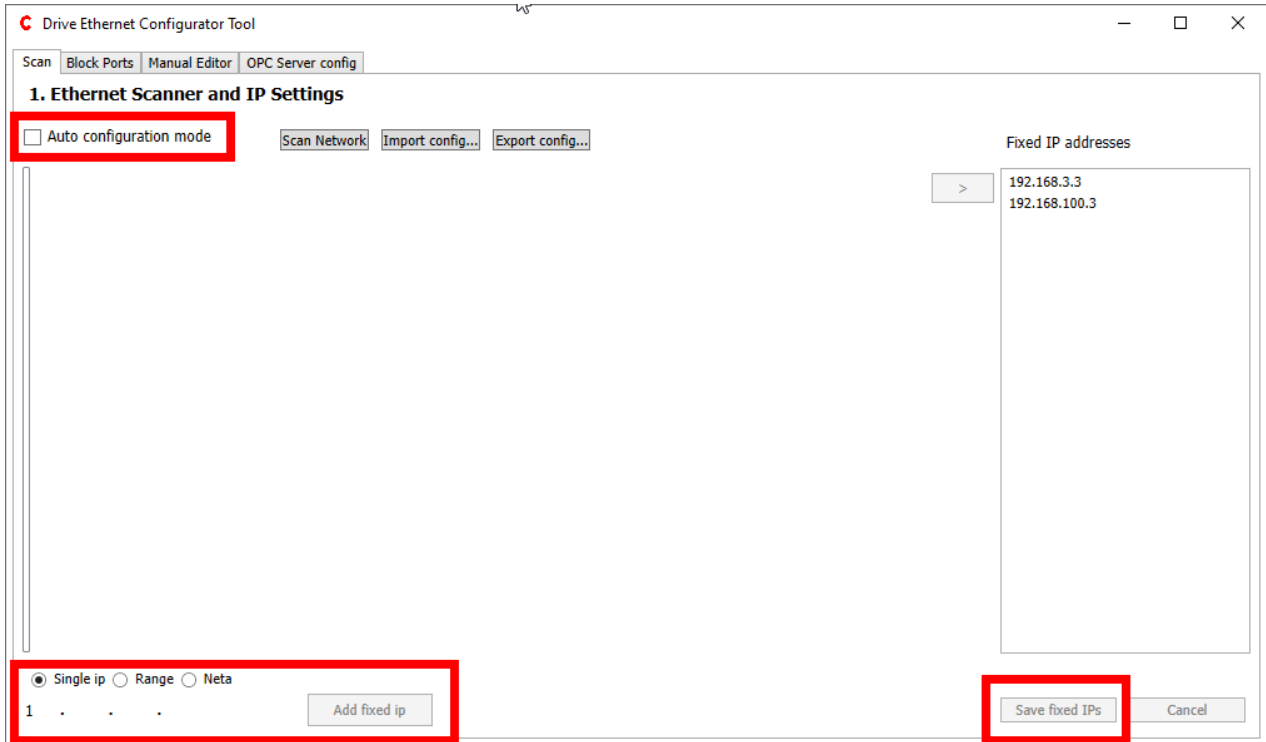
This document discusses how connect to an 80 series drive via Ethernet with drive composer 2.8.2 Pro software.

When connecting to the drive via Ethernet (EtherNet/IP, Modbus TCP/IP or PROFINET I/O) there are a few things to make sure to do to get Drive Composer 2.8.2 Pro to connect to the drive.

The first thing is to make sure to only have Ethernet checked on the Drive Composer splash screen. Uncheck all the other options (USB and DDCS). If USB and DDCS are left checked it could cause the Drive to not connect via Ethernet.



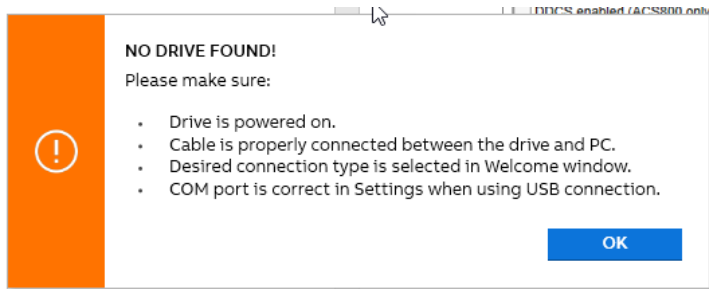
Next, it is best to go into Comm settings to put the drive connection into fixed IP mode. Click the comm settings button and the following screen will appear. Uncheck auto mode, manually enter in the IP addresses of the devices you are connecting to and click Save fixed IPs.



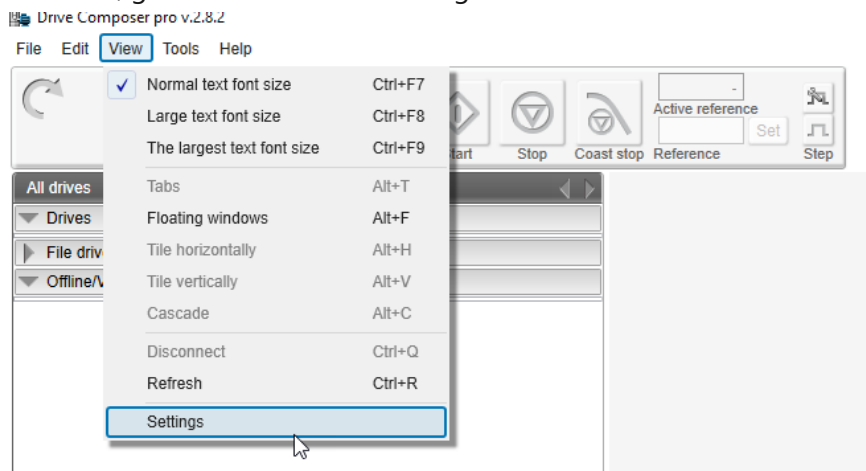
Next click the Connect button on the splash screen below.



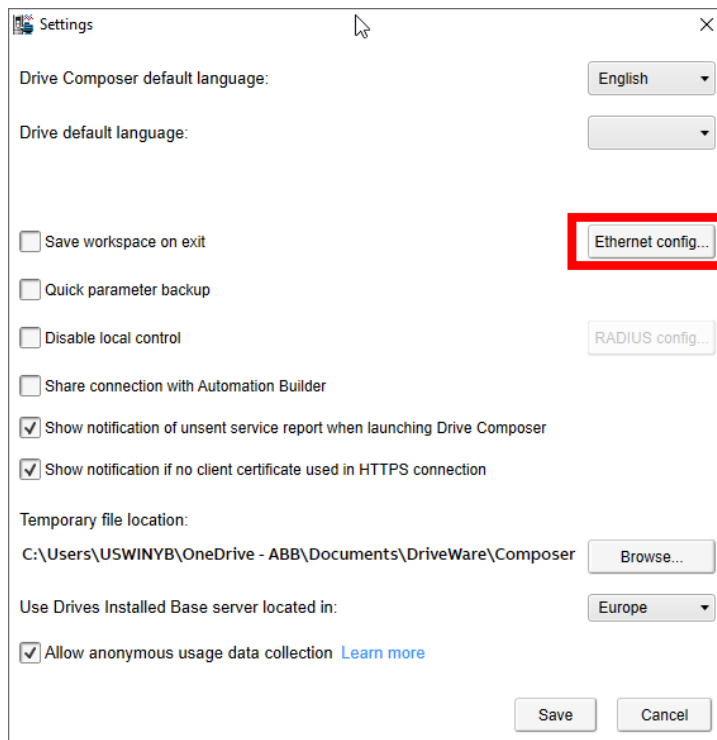
Drive Composer software will connect to the drive, or you will get the following message below.



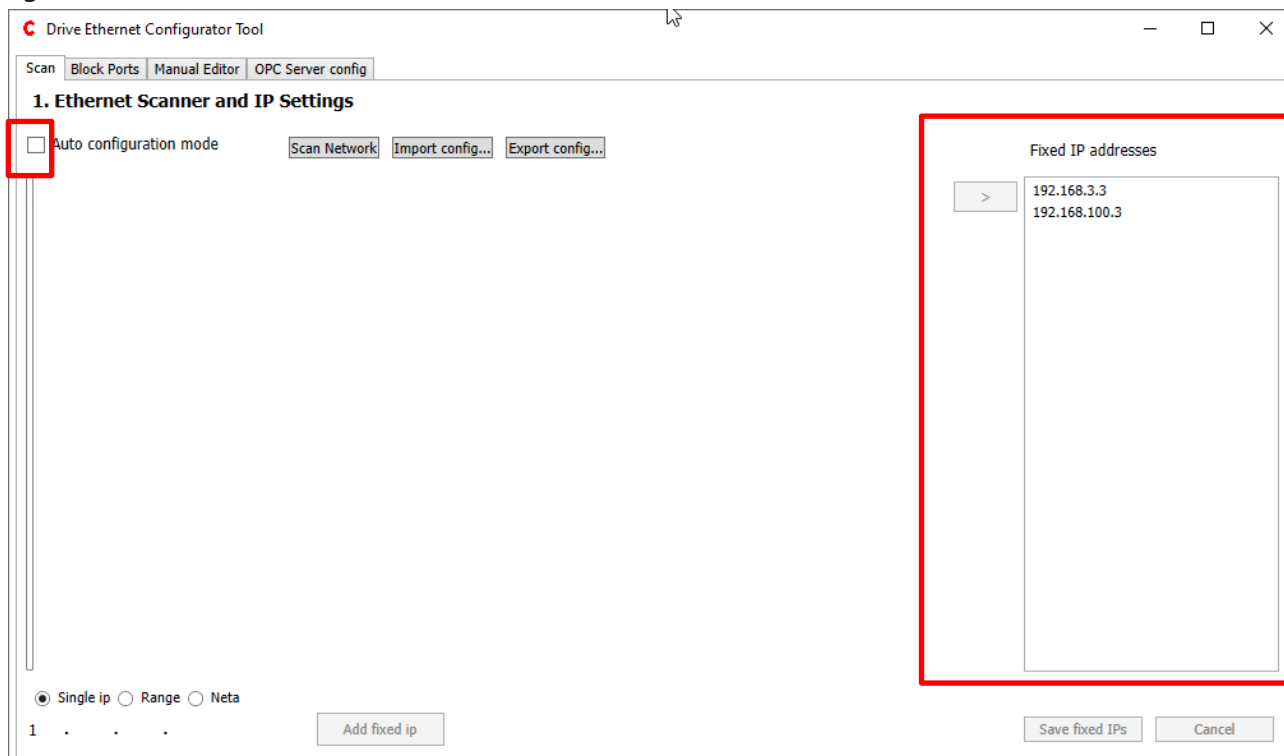
If you get the message above, make sure that you can ping the drive at that IP address. If you can ping the drive, go to view and then settings.



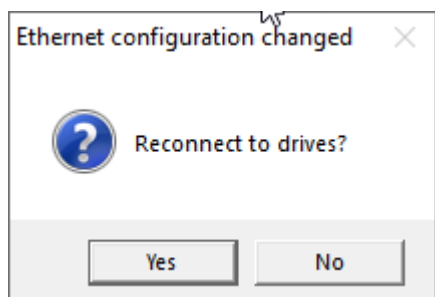
The following screen will open. Click the Ethernet Configuration button.



The following screen will open. Now clicking the comm settings on the splash screen. What you might notice is that none of the settings that were selected earlier were saved. Make sure to uncheck auto again, re-add in the fixed IP addresses and click Save fixed IPs.



After Save fixed IPs is clicked the following screen will appear. Hit yes to reconnect to the drives.



After this, Drive Composer should connect to the drive. Drive Composer version 2.8.2, the comm settings may not be saved when accessing them from the splash screen. This should be resolved with release 2.9 of Drive Composer Pro.

For more information see the manuals below.

- Drive Composer Pro User Manual 3AUA0000094606