

## SafePlus 36

# SF<sub>6</sub>-insulated compact switchgear for secondary distribution



SafePlus 36 is a metal enclosed compact switchgear system for distribution applications up to 40,5 kV . The switchgear has a high flexibility due to its extendibility and the possible combination of fully modular and semi-modular configurations.

SafePlus 36 is a completely sealed system with a stainless steel tank containing all the live parts and switching functions. The sealed steel tank with constant atmospheric conditions ensures a high level of reliability, personnel safety and a virtually maintenance-free system.

The SafePlus 36 system offers a choice between a switch-fuse combination or a circuit breaker with relay for protection of the transformer.

### Features and benefits

- Auto-reclosing capability
- Metal-enclosed design
- Well proven technology - years of experience
- Type tested according to all relevant IEC standards
- Manufactured according to ISO 9001, 14001 and OHSAS 18 001
- Recyclable and very low environmental impact
- Maintenance free
- Internal arc classified (IAC)
- Extensible in both directions
- No exposure of live parts
- 420 mm wide functional units

### Customized features

- Cable riser
- Arc suppressor in gas enclosure
- Arc suppressor in cable compartment
- Arc flash sensor
- Base frames for cable entry
- Cold climate version
- Low version 1700 mm switchgear height
- Current and voltage sensors technology
- Metering solution

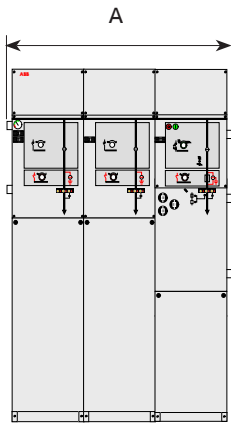
### Applications

- Small industries
- Wind power plants
- Buildings, hotels, shopping centers
- Mining applications
- Airports
- Railway systems
- Underground installations

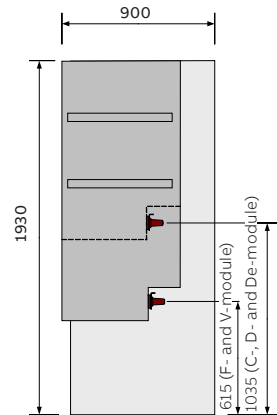
Technical Data		C-module		F-module	V-module		
		Switch disconnecter	Earthing switch	Switch-fuse combination	Downstream earthing switch	Vacuum circuit-breaker	Earthing switch/disconnector
<b>SafePlus</b>							
Rated voltage	kV	36 / 40,5	36 / 40,5	36 / 40,5	36 / 40,5	36 / 40,5	36 / 40,5
Power frequency withstand voltage	kV	70 / 95	70 / 95	70 / 95	70 / 95	70 / 95	70 / 95
- across disconnecter		80 / 110		80 / 110			80 / 110
Lightning impuls withstand voltage	kV	170 / 185	170 / 185	170 / 185	170 / 185	170 / 185	170 / 185
- across disconnecter		195 / 215		195 / 215			195 / 215
Rated normal current	A	630 / 630		200 / 200 <sup>1)</sup>		630 / 630	
Breaking capacities:							
- active load	A	630 / 630		200 / 200		630 / 630	
- closed loop	A	630 / 630		200 / 200			
- off load cable charging	A	20 / 21 (Class C2)		20 / 21			
- earth fault	A	60 / 63		60 / 63			
- earth fault cable charging	A	35 / 36		35 / 36			
- transfer current	A			840 / 750			
- short-circuit breaking current	kA			see <sup>2)</sup>		20 / 20	
Making capacity	kA	62,5 / 62,5 (5 times)	62,5 / 62,5 (5 times)	see <sup>2)</sup>	2,5 / 2,5	62,5 / 62,5 (5 times)	62,5 / 62,5 (5 times)
Class (Electrical endurance)		E3 / E2	E2 / E2	E3 / E3	E2 / E2	E2 <sup>3)</sup>	E2 / E2
Short time current 1 sec.	kA	25 / 25	25 / 25	see <sup>2)</sup>	1 / 1	25 / 25	25 / 25
Short time current 3 sec.	kA	20 / 20	20 / 20	see <sup>2)</sup>	- / -	20 / 20	20 / 20
Internal arc classification IAC AFL, 1s	kA	25 / 25		20 / 20		20 / 20	
Classes		C2, M1	M0	C2, M1	M0	C2, S1 <sup>4)</sup> , M1	M0

<sup>1)</sup> Depending on the current rating of the fuse-link <sup>2)</sup> Limited by high voltage fuse-links <sup>3)</sup> Class E1 for circuit-breakers with auto-reclosing duty  
<sup>4)</sup> Class S2 is available on request for 36kV

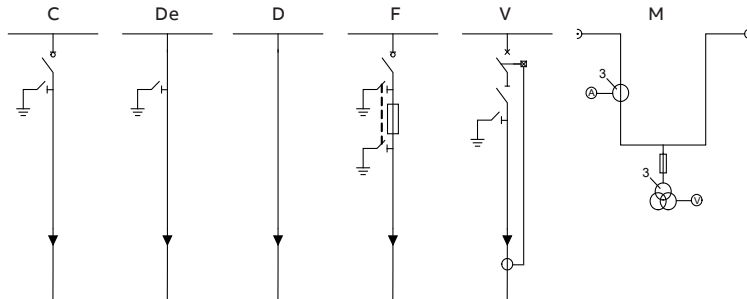
## Dimensions



Unit	A (mm)
1-way	490
2-way	910
3-way	1330
4-way	1750



## Available modules



C - Cable switch  
De - Direct cable connection with earthing switch  
D - Direct cable connection  
F - Switch-fuse disconnector  
V - Vacuum circuit-breaker  
M - Metering module

ABB AS  
Amtm. Aallsgt. 73  
P.O. Box 108, Sentrum  
3716 Skien, Norway

We reserve the right to make technical changes or modify the contents of this document without prior notice. With regard to purchase orders, the agreed particulars shall prevail. ABB AG does not accept any responsibility whatsoever for potential errors or possible lack of information in this document.

We reserve all rights in this document and in the subject matter and illustrations contained therein. Any reproduction, disclosure to third parties or utilization of its contents – in whole or in parts – is forbidden without prior written consent of ABB AG. Copyright © 2018 ABB  
All rights reserved