

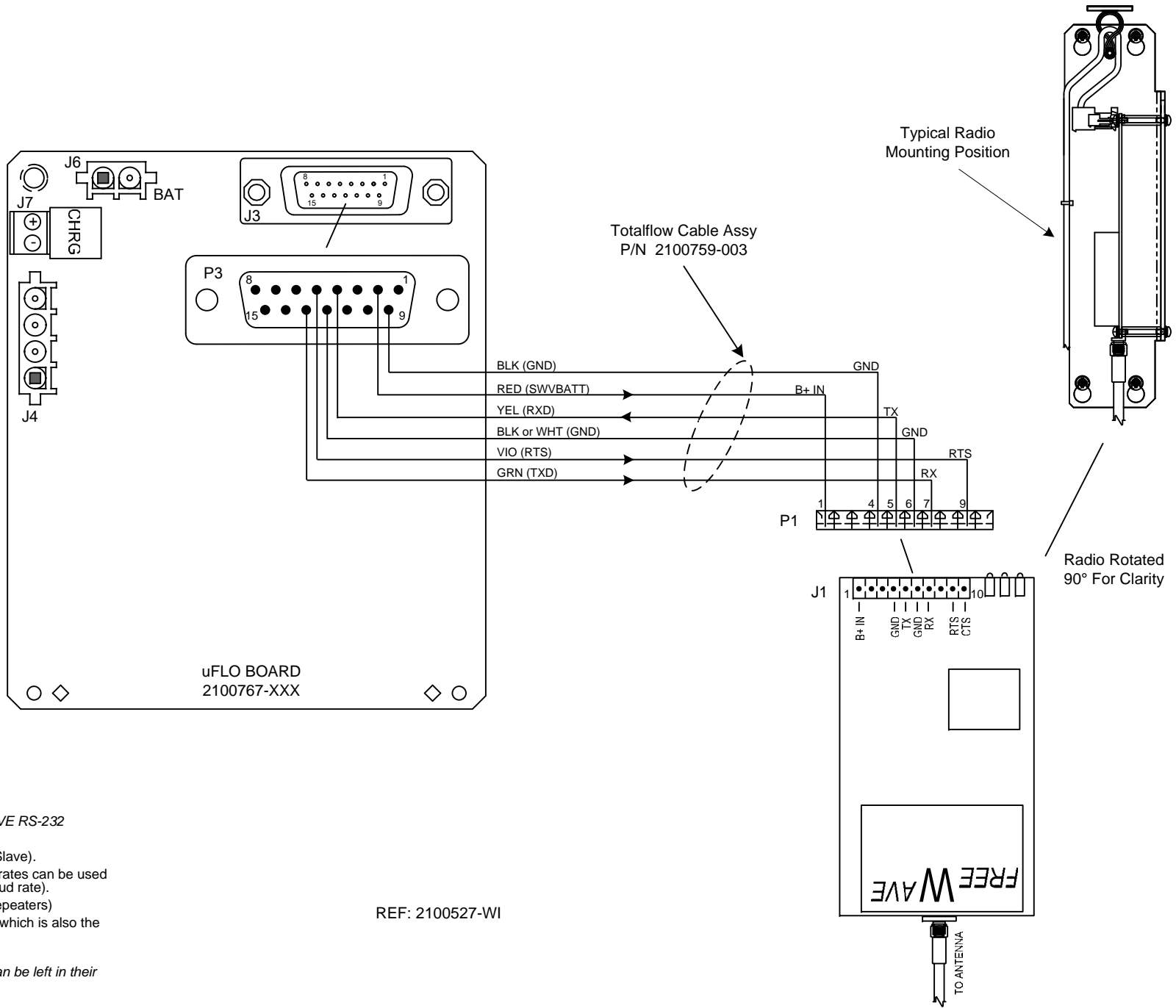
NOTES:

1. WARNING!

Using a non-factory RS232 data cable may result in damage and may void system warranty.

2. All installations in hazardous locations must comply with requirements of certification drawing 2015246-CD.

3. Zero Listen Cycle Time required.



PRIMARY SETUP ITEMS FOR FREEWAVE RS-232 RADIOS:

1. *Modem Mode* = 3 (Point to MultiPoint Slave).
2. *Modem Baud* = 6 (9600) - (other baud rates can be used but needs to match flow computer's baud rate).
3. *Number Repeaters* (Enter number of repeaters)
4. *NetWork ID* (Enter address ID of radio which is also the same as the Master Radio's ID.)

REF: 2100527-WI

Note: Typically, all other setup items can be left in their default state.

	TOTALFLOW Products	ACTION	DOC TYPE	TITLE	DWG NO.	REV	SHEET
		D17846	UD	uFLO w/o COMM TERM BD TO FREEWAVE RADIO (RS-232)	2101642	AB	1 OF 1