

---

 TECHNICAL DATA SHEET

# PMA Accessories - WPS - Water impact protection

## Two-piece

### PMA



Water impact protection with click cap for PMAFIX fitting series



#### Applications:

- Construction of railways and vehicles, machine tool industry
- For increased ingress protection requirements for high pressure / steam jet cleaning applications

#### Features & Benefits:

- Extremely shock resistant
- Based on PMAFIX/PMAFLEX system with ingress protection of IP68
- Additional protection against water jet impact
- Increased ingress protection of PMAFIX systems up to IP69
- Quick mounting
- Possible for subsequent installation (retrofit)
- High retention forces
- Optimal fixation due to integrated rib
- Groove for additional fixation

#### Ingress protection:

- IPX9 = at 80 - 100 bar water jet pressure
- Until 80°C water temperature

#### Materials:

- High-grade, specially formulated polyamide 6

#### Compatible with:

- Suitable with all PMAFIX fitting series
- Fits to all PMA conduit profiles

#### Conforms to:

- EN 45545-2 HL3 (R22 & R23)
- NFPA 130
- UL 94 (V0)

#### Weathering resistance:

- Very good UV resistance and weathering characteristics

#### Colour:

- Black

#### Chemical properties:

- Excellent resistance to fuels, mineral oil, fat, alkalies, common solvents, glycols, bases and weak acids

Please refer to [www.pma.ch](http://www.pma.ch)  
(Technical Information / Chemical Resistance)

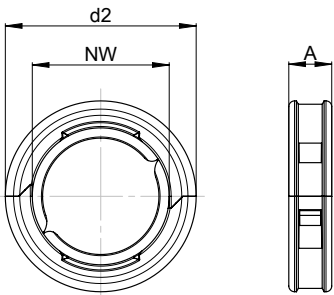
#### Environmental properties:

- Free from halogens and cadmium
- RoHS and REACH compliant

**Product selection:**

Part no.	Conduit size	Dimensions in mm (nom.)		Weight	Packing unit
black	NW	d2	A	kg/100 pcs	pcs/PU
WPS-NW10	10	22.0	8.0	0.2	50
WPS-NW12	12	26.0	8.0	0.2	50
WPS-NW17	17	33.0	8.0	0.3	50
WPS-NW23	23	40.0	9.0	0.5	30
WPS-NW29	29	47.0	9.5	0.7	20
WPS-NW36	36	59.0	10.0	1.3	20
WPS-NW48	48	71.0	10.0	2.3	10

Our customer service dept. or local distribution partner will be pleased to help you concerning product availability and lead time



<b>Mechanical Properties:</b>	<b>Value:</b>	<b>Test parameters:</b>	<b>Test method:</b>
Tensile modulus	1'200 ... 3'700 N/mm <sup>2</sup>		ISO 527
Tensile strength	45 ... 65 N/mm <sup>2</sup>		ISO 527
Notched bar impact test	4 ... 20 kJ/m <sup>2</sup>		ISO 180/1C
Vibration and shock standard	Cat. 2		IEC 61373, IEC 60068-2-27 / -64

<b>Thermal properties:</b>	<b>Value:</b>	<b>Test parameters:</b>	<b>Test method:</b>
Continuous application temperature	-50 ... +105°C		PMA DO 9.21-4510
Upper application temperature	+120°C	(20'000 h)	PMA DO 9.21-4360
Short-term	+160°C	(168 h)	PMA DO 9.21-4360

<b>Fire safety properties:</b>	<b>Value:</b>	<b>Test parameters:</b>	<b>Test method:</b>
Fire performance	non flame-propagating		IEC EN 61386-1
Flame class	V0		UL 94
Fire hazard level	HL3		EN 45545-2 (R22)
Oxygen index	> 32 %		EN ISO 4589-2
Smoke density	< 150 Ds max.		EN ISO 5659-2 (25 kW/m <sup>2</sup> )
Toxicity	< 0.75 CIT <sub>NLP</sub>		NF X 70-100-1/-2: (600°C)
Fire hazard level	HL3		EN 45545-2 (R23)
Oxygen index	> 32 %		EN ISO 4589-2
Smoke density	< 300 Ds max.		EN ISO 5659-2 (25 kW/m <sup>2</sup> )
Toxicity	< 1.5 CIT <sub>NLP</sub>		NF X 70-100-1/-2: (600°C)
Fire performance NFPA 130:			NFPA 130
- Flammability	compliant		ASTM E 162
- Smoke density	compliant		ASTM E 662
Heat and visible smoke	26.00 MJ/kg		ASTM E 1354
Smoke emission toxicity	compliant		Bombardier SMP 800-C
Smoke emission toxicity	compliant		Boeing BSS 7239

#### Content of delivery:

- Two-piece water impact protection

#### Assembly instructions:

- Please consider the appropriate assembly instructions on [www.pma.ch](http://www.pma.ch)

ABB Switzerland Ltd,  
PMA Cable Protection  
Aathalstrasse 90  
8610 Uster, Switzerland  
Phone: +41 58 585 00 11  
pma-info@ch.abb.com  
[www.pma.ch](http://www.pma.ch)

Let's write the future.  
Together. **abb.com**

We reserve the right to make technical changes or modify the contents of this document without prior notice. With regard to purchase orders, the agreed particulars shall prevail. ABB Installation Products Inc. does not accept any responsibility whatsoever for potential errors or possible lack of information in this document.

We reserve all rights in this document and in the subject matter and illustrations contained therein. Any reproduction, disclosure to third parties or utilization of its contents – in whole or in parts – is forbidden without prior written consent of ABB Inc. Copyright© 2019 ABB Installation Products Inc. All rights reserved

