

# MineScape Block Model

MineScape Block Model provides a sophisticated working environment where geologic rules are defined for the local geology.

The deposit model is built by progressively introducing geologic elements through loading of physical interpreted shapes or interpolation using material associations and/or zone following with a selection of algorithms. The model can be displayed at any time to validate the model construction process. The completed model becomes the base for reserves and other mine planning work.

## The features

### User control

Allows user definition of parent block and sub-block creation against any surface, interval (including those produced from MineScape Stratmodel) or wireframe to define geological, quality and mine planning entities. Model construction allows orientation in any X, Y or Z direction (rotate, dip and plunge), block size and shape.

### Construction efficient

Efficiently interrogates the customization of block storage through a unique user-defined index. Sub-celling of models allows economic storage, interrogation and processing of model files.

### User interaction

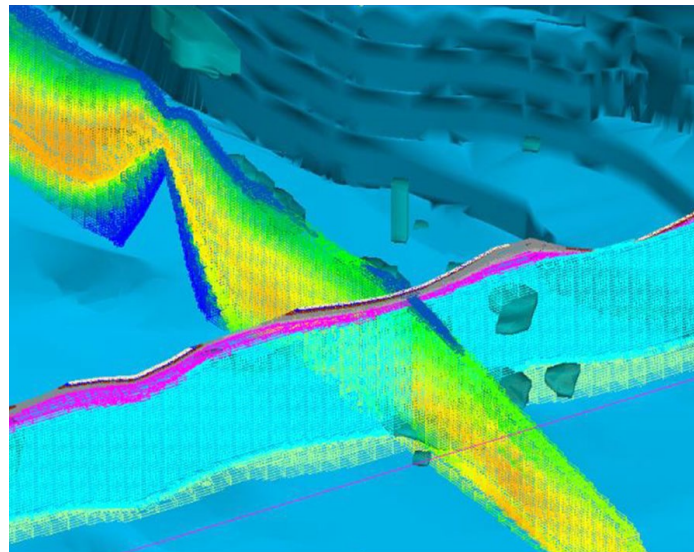
Provides a model data structure that allows MXL (MineScape Expression Language) and MPL (MineScape Programming Language) to process or calculate block attributes, eg, products and grade equivalents.

### Interpolation

Incorporates a full suite of industry- standard interpolators including inverse distance, ordinary and universal Kriging (absolute and indicator) and nearest neighbor for block estimation. User-defined sample and block selection parameters are provided as well as trend or surface following interpolation controls.

### Interrogation

Fully accessible for interactive graphical interrogation and viewing capability. Models can be sliced and intersected in any orientation to reveal graphical depiction of ore zones, dilution and grade trends against any block attribute. Reports, bar/frequency charts and grade tonnage curves can also be generated.



### Reserving

Classifies reserves by level, material type, polygon, wireframe, and any block model attribute. Fully integrated with MineScape's mine design and scheduling functionality.

## The benefits

### Accurate

Delivers total control over the model orientation, construction and interpolation, allowing the deposit to be accurately defined and estimated in 3D space.

### Comprehensive

Enables you to use ALL available information, including vertical or inclined drill holes, pit survey, digital terrain data, faults and areas defining washouts. Interpreted control can be superimposed in areas of structural complexity that are not well represented by data.

### Powerful visualization

Displays graphical results limitlessly, providing powerful visualization for presentation to anyone from geologists to mine planners to the mine manager.

### Fully integrated

Accesses and uses any other MineScape plugin, including Pit Optimization, MineScape Reserves, Quality and Schedule. Export to third party optimization tools such as WHITTLE 4D is also supported.

# Contact us

## About ABB's Enterprise Software product group

We provide industry-leading software and deep domain expertise to help the world's most asset-intensive industries such as mining, energy, and utilities solve their biggest challenges, from plant level, to regional network scale, to global fleet-wide operations.

Our enterprise software portfolio offers an unparalleled range of solutions for asset performance management, operations and workforce management, network control, and energy portfolio management to help customers reach new levels of efficiency, reliability, safety and sustainability. We are constantly researching and incorporating the latest technology innovations in areas such as mobility, analytics and cloud computing.

We offer unmatched capabilities to integrate information technologies (IT) and operational technologies (OT) to provide complete solutions to our customers' business problems.

## Enterprise Software

North America:

+1 678 830 1020

+1 800 868 0497 from US and Canada

Latin America:

contacto.lam@cl.abb.com

Europe, Middle East, Africa:

+44 1483 794080

+33 164 869 910

Asia Pacific:

+61 7 3303 3333

**[www.abb.com/enterprise-software](http://www.abb.com/enterprise-software)  
[info.pges@abb.com](mailto:info.pges@abb.com)**

## Note

The information contained in this document is for general information purposes only. While ABB strives to keep the information up to date and correct, it makes no representations or warranties of any kind, express or implied, about the completeness, accuracy, reliability, suitability or availability with respect to the information, products, services, or related graphics contained in the document for any purpose. Any reliance placed on such information is therefore strictly at your own risk. ABB reserves the right to discontinue any product or service at any time.

Product names, logos, brands and other trademarks used herein remain the property of their respective owners.

© Copyright 2016 ABB. All rights reserved.