

RESIDENTIAL SOLUTIONS

Splash into summer savings with our Spa panels promotion



Purchase a minimum of 10 spa panels and receive a 10% discount on your order. Take advantage of this limited-time distributor promotion to restock your branch or distribution center with top-quality, high-demand Spa panels and save. Hurry! Offer ends September 30, 2024.



01 GFCI SPA AND POOL PANEL

Promotion details

Spa panels exclusive offer

Order a minimum of 10 Spa panels and receive a 10% off your order. You can mix and match SKUs.

Catalog number	Minimum QTY.
TL412R250GF	10
TL412R260GF	10

How to redeem

In Empower Flow, enter promotion code 65000254 in the “have a promotion code?” field and select apply.

Note: Promotion code cannot be applied on EDI or fax orders. It must be entered through ABB empower flow.



SCAN QR CODE FOR PRODUCT INFORMATION

Valid on orders entered from July 1 to September 30, 2024. **Stock orders only — for immediate release.**

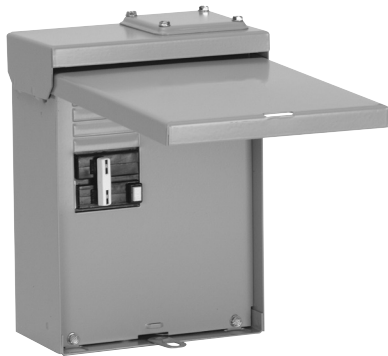
The net price will be shown at the time of invoice for each catalog number at line level. Discount will not appear as a total sum on the invoice.

Qualifying customers

Eligible for distributors in the (50) U.S. states only. U.S. territories including Puerto Rico and export customers are not eligible for this promotion.

Contact your ABB representative for more information.

Have a promotion code?



Spa and pool panels

With ABB'S spa and pool panel, supplying power and protection to your spa, pool or other outdoor area is simple and economical. It comes with the ground fault circuit interrupter already installed, and it provides spaces for up to four additional breakers for other needs. In addition, it comes with installed neutral and ground bars and the raintight hub for either top or bottom feed.

Product specifications

- GFCI protection for pools and spas as required by NEC 680.44
- Expandable with up to four additional circuits
- Two versions — 50A or 60A 2-pole GFCI breaker installed
- Factory-installed neutral and ground bar included
- Weatherproof enclosure allows bottom or top feed (raintight hub included)
- 120/240V ac, single-phase, 3-wire, 125A main lugs
- UL Listed (Panelboards No. 67)
- Type 3R outdoor enclosure
- Meets NEC #680.44

NEC #680.44 Spas and Hot Tubs Protection

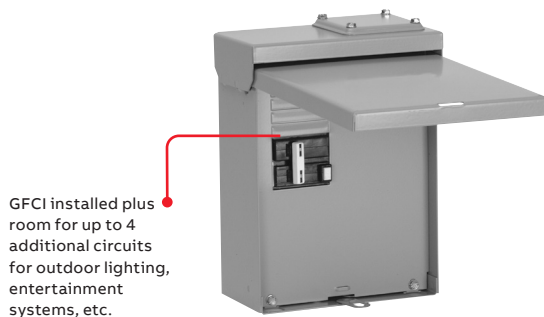
Except as otherwise provided in this section, the outlet(s) that supplies a self-contained spa or hot tub, a packaged spa or hot tub equipment assembly or a field-installed spa or hot tub shall be protected by a ground-fault circuit interrupter

- Suitable for use as service entrance equipment when installed in accordance with the National Electrical Code (NEC)

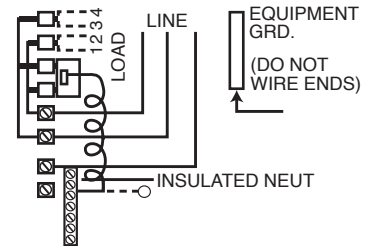
Ordering information

Main Lug Amperage	GFCI ¹ Breaker Amperage	Additional Breaker Spaces		Dimensions (inches)			Catalog Number
		1" THQL	1/2" THQP	H	W	D	
125	50	2	4	10.25	7.75	4.00	TL412R250GF
125	60	2	4	10.25	7.75	4.00	TL412R260GF

¹ 5mA trip level



GFCI installed plus room for up to 4 additional circuits for outdoor lighting, entertainment systems, etc.



Typical wiring diagram

ABB Inc.
305 Gregson Dr.
Cary, NC 27511
United States

electrification.us.abb.com

We reserve the right to make technical changes or modify the contents of this document without prior notice. With regard to purchase orders, the agreed particulars shall prevail. ABB Inc. does not accept any responsibility whatsoever for potential errors or possible lack of information in this document.

We reserve all rights in this document and in the subject matter and illustrations contained therein. Any reproduction, disclosure to third parties or utilization of its contents – in whole or in parts – is forbidden without prior written consent of ABB Inc. Copyright© 2024 ABB. All rights reserved