

We reserve all rights in this document and in the information contained therein. Reproduction, use or disclosure to third parties without express authority is strictly forbidden. © ABB 19

Pos. Läge	R connects förbinder	H connects förbinder
1	13-14	2-15
2		3-15
3		4-15
4		5-15
5		6-15
6		7-15
7		8-15
8		9-15
9A		10-15
9		11-15
10	12-14	13-15
10A		1-15
11		2-15
11A		3-15
12		4-15
13		5-15
14		6-15
15		7-15
16		8-15
17		9-15
18	10-15	
19		

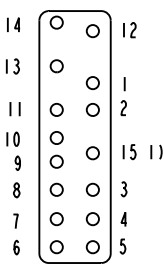
A position with letter is a through position and gives the same voltage as the normal position.

Läge med bokstav är ett genomloppsläge och ger samma spänning som normalläget.

1) Connections between the terminals 15 of the three phases are included in the star-point type.

Förbindningar mellan uttag 15 i de tre faserna ingår i nollpunktsutförandet.

Terminal board  
Plint



Section A-A  
Sektion A-A

On-load tap-changer type UZED., UZFD., 19 tap positions, coarse/fine switching.

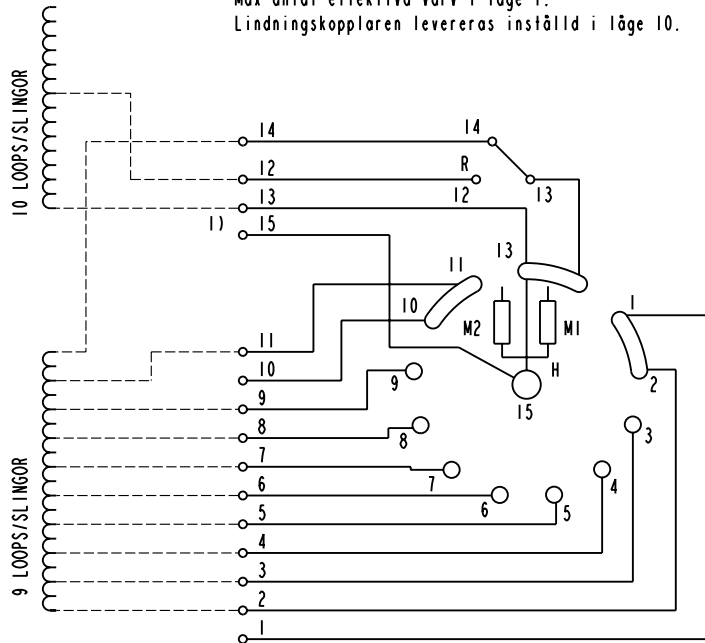
Max effective No. of turns in pos. 1.

The tap-changer is delivered set in pos. 10.

Lindningskopplare typ UZED., UZFD., 19 lägen, grov/fin-koppling.

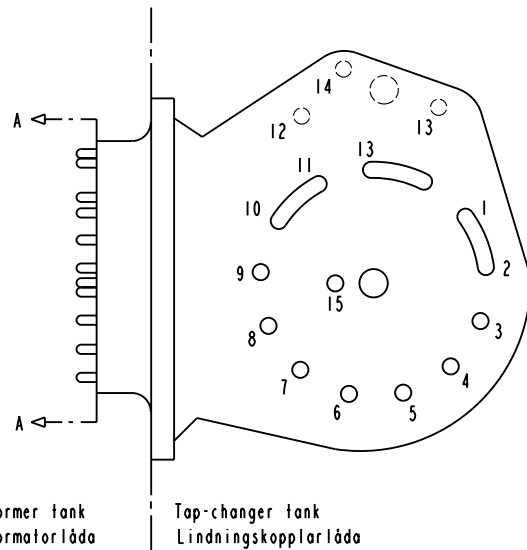
Max antal effektiva varv i läge 1.

Lindningskopplaren levereras inställd i läge 10.



The tap-changer is shown in pos. 10  
Lindningskopplaren visad i läge 10

- R Change-over selector  
Grov/fin-omkopplare
- H Main contact  
Huvudkontakt
- M1, M2 Transition contacts  
Motståndskontakter



Transformer tank  
Transformatorlåda

Tap-changer tank  
Lindningskopplarlåda

Sheet	Cont
Year	Week
Dept	
Rev	Ind
Design checked by	Design checked by
Issued by	Dept
Year	Week
Form No.	

-	-	-	-	-
Rev	Ind	Revision	Appd	Year
Accepted by qual control		Accepted for prod by		Description (English)
R. Yngvesson				CONNECTION DIAGRAM
Design checked by		Drawn by		Description (own language)
B-O. Stenestam		L. Bergman		KOPPLINGSSHEMA
Drawing checked by		Issued by		Lang
M. Hedlund		COM/TKO 97 33		Sheet
ABB		Asea Brown Boveri		Rev
		5492 0395-4		Ind
				Cont
				-