

FEATURE ARTICLE PMA MODULAR SUPPORT SYSTEM

A flexible and modular support system

PMA TRUST™ modular support system boasts many highly-promising characteristics for conduits and cables



Finding the right product for Bern's public transport operator: The flexible PMA TRUST™ modular support system offers many options for securing cables and conduits

For over 125 years, Bernmobil has been responsible for public transport in Bern, Switzerland's capital city. Bernmobil's workforce of some 1,000 operates 48 trams and 163 buses every day and in all weather conditions, serving 336 stops.

To be able to continue this high degree of reliable services, it is essential for Bernmobil's vehicle fleet to be in perfect working order.

Over time, the demands of operating for 365 days a year will leave its mark on any cable protection system. Due to mechanical influences such as torsional stress and to sparks from the current

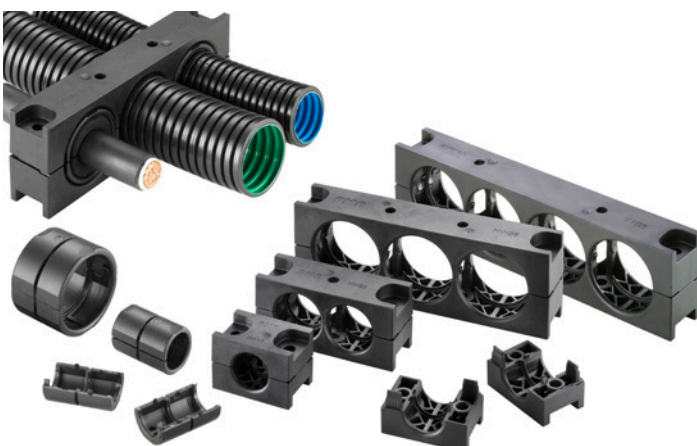
The flexible PMA TRUST™ modular support system offers many options for securing cables and conduits. The new solution also benefit Bernmobil in Bern, Switzerland: The city's public transport operator, carries over 100 million passengers annually on its network of 5 tram routes, 3 trolley bus routes and 26 bus routes.

collector, cracks and holes appear in the conduit as it ages which need to be repaired professionally with minimal interruption.

Effective and technologically sophisticated repair solutions are needed for accurately repairing just the damaged and aging parts of the cable protection system. Michael Aufdenblatten, Project Manager Trams at Bernmobil, teamed up with PMA to test a range of PMA products with a view to finding the best possible repair solution. According to Michael Aufdenblatten: "We know PMA to be a supplier of high-quality cable protection solutions and we have already installed their products in our trams. We therefore seized the opportunity of getting our workshop team to discuss various tricky cable protection problems in detail right on the spot with PMA's cable protection experts."

The PMA team discussed with Bernmobil how to prevent cracks occurring in conduits in the first place. Until our discussions Bernmobil had been installing conduits and support systems provided by another manufacturer.

Lack of conduit flexibility in the existing support systems was identified as a cause of cracking. Due to the constant torsional forces, the conduits suffer stress fatigue and eventually crack. This is precisely





A complete system: The BGMP modular support system offers total flexibility in terms of installation complying with all kinds of installation requirements. Each element can host different combinations of conduits and cables, in various and different sizes, so that cable routing is made easy regardless of its complexity.

what PMA's new, highly flexible PMA TRUST™ modular support system can help prevent. The PMA TRUST™ modular support system is a light, compact solution offering high impact-resistance. Thanks to its innovative design, the conduit is able to move within the support system, thus helping prevent cracking due to torsional stress. The external dimensions of this new design have been reduced to the minimum and the spacing between parallel conduits is very small. The system has been specially designed for use in the rail vehicle construction sector and for other applications where conduits and cables running in parallel need to be held in position. The fixation of the modular support system can be done with different techniques: on a C-rail, pre-assembled, stacked or upside-down.

Thanks to the modular system, up to 30% of installation time can be saved. The system offers total flexibility in terms of installation complying with all kinds of installation requirements. PMA's customer advisers, together with Bernmobil's workshop team, completed a trial installation in an initial modular cable support system to establish how BGPM performed in everyday use and while interacting with conduits. According to Michael Aufdenblatten, Project Manager, Trams at Bernmobil: "The PMA TRUST™ modular support system boasts many highly-promising characteristics. I feel certain that the system will pass our test with flying colours."

ABB Switzerland Ltd
PMA Cable Protection
Aathalstrasse 90
CH-8610 Uster, Switzerland

www.pma.ch
abb.com/railway

We reserve the right to make technical modifications at any time or to change the content of this document without prior notification. Orders are subject to our agreed terms and conditions. ABB AG accepts no responsibility for any errors in this document or for any information which may be missing. We reserve all rights to this document and to the

Contact:

ABB AG
PMA Cable Protection
Aathalstrasse 90
8610 Uster, Switzerland
Tel: +41 / 58 585 00 11
pma-info@ch.abb.com
www.pma.ch

Link:

[PMA PMA TRUST™ modular support system Website](http://www.pma.ch)

objects and illustrations it contains. Reproducing the content of this document, disseminating it to third parties or using it, either in part or in whole, is prohibited without the prior consent of ABB AG.

© Copyright 2021 ABB
All rights reserved