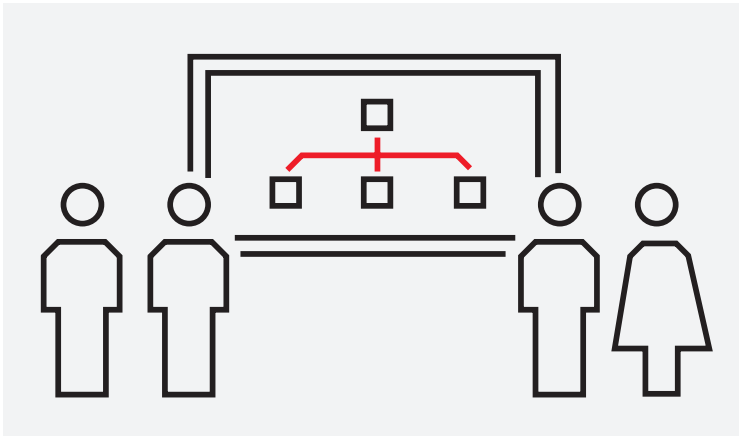


COURSE DESCRIPTION

S302

S+ Operations administration and installation



The goal of this course is to learn how to plan and perform the installation of HMI (Human Machine Interface) client and server nodes of a Symphony Plus system.

Learning objectives

Upon completion of this course, students will be able to:

- Understand the S+ Operations HMI architecture and limits
- Plan the installation of a complete S+ Operations architecture
- Setup the redundant HMI network and verify nodes communication
- Create Windows users and link them to S+ Operations users
- Configure user group policies and access rights
- Setup S+ Operations audit trail functionality
- Setup time synchronization
- Configure Windows domains / workgroups
- Install and license S+ Operations software
- Configure and maintain redundant servers
- Perform HMI configuration backup and restore

Participant profile

This training is targeted at system and application engineers, commissioning and maintenance personnel, service engineers and system integrators.

Prerequisites

Students should have attended the related Symphony Plus SD and HR Series or Symphony Plus MR Series system overview course.

Students should have a general understanding of process automation and basic knowledge of control systems. Experience in dealing with and handling of current Microsoft operating system is an advantage.

Topics

- HMI architecture, communication network, types of nodes
- HMI system installation planning
- Network setup
- HMI nodes and network monitoring
- OPC communication
- S+ Operations user security policies
- Server redundancy
- Time synchronization
- HMI configuration backup and restore
- Windows domain configuration setup
- S+ Engineering Installation Manager
- S+ Operations installation with Composer Operations
- S+ Operations diagnostics

Course type and methods

This is an instructor led course with interactive classroom discussions and associated lab exercises. Approximately 50% of the course entails hands-on lab activities.

Duration

4 1/2 days

Agenda

| Day 1 | Day 2 | Day 3 | Day 4 | Day 5 |
|----------------------------------|--------------------------------------|---|--|---|
| Course overview | OPC communication | Client connections | Domain setup | S+ Operations installation with Composer Operations |
| Presentation of S+ Operations | Symphony Plus security | Audit trail | System installation with S+ Engineering Installation Manager | Diagnostics |
| S+ Operations HMI architecture | S+ Operations workplace restrictions | Server redundancy | Hands-on lab: exercises | Preventive maintenance |
| HMI installation planning | Hands-on lab: exercises | Time synchronization | | Hands-on lab: exercises |
| Network setup | | Backup/restore S+ Operations installation | | Questions and answers |
| HMI nodes and network monitoring | | | Hands-on lab: exercises | |

ABB

Power Generation Training

Email: IT-powergeneration.training@abb.com

The information contained in this document is for general information purposes only. While ABB strives to keep the information up to date and correct, it makes no representations or warranties of any kind, express or implied, about the completeness, accuracy, reliability, suitability or availability with respect to the

information, products, services, or related graphics contained in the document for any purpose. Any reliance placed on such information is therefore strictly at your own risk. ABB reserves the right to discontinue any product or service at any time.
© Copyright 2017 ABB. All rights reserved.