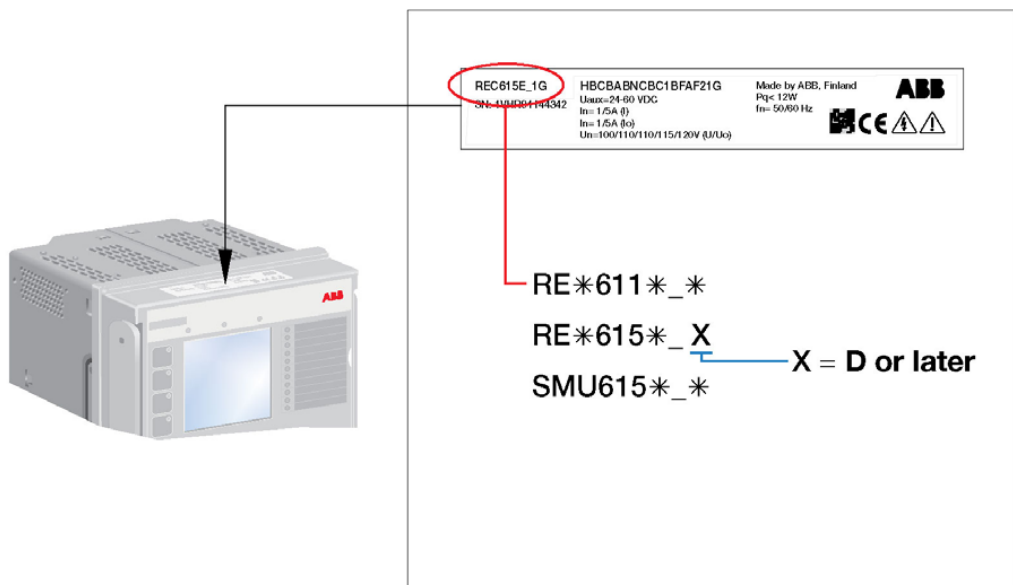

611 and 615 series

Quick Installation Guide



Document validity

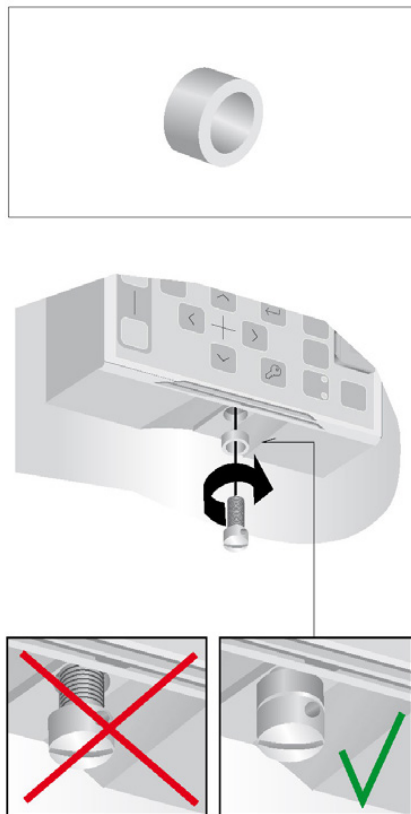
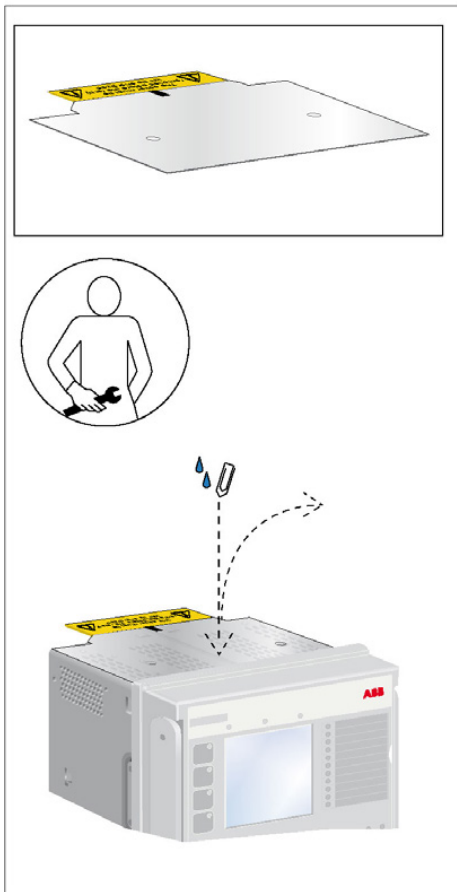


Mounting the 611 and 615 series

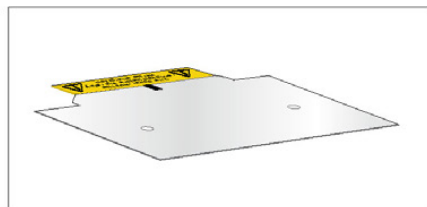
Contents

- 4 Loose parts
- 5 Attaching the protective film
- 6 Withdrawing the plug-in unit from the case
- 7 Flush mounting
- 9 19" Rack mounting
- 11 Semi-Flush mounting
- 13 Inclined Semi-Flush mounting
- 15 Wall mounting
- 17 Inserting the plug-in unit into the case
- 18 Locking the handle
- 19 Sealing the handle

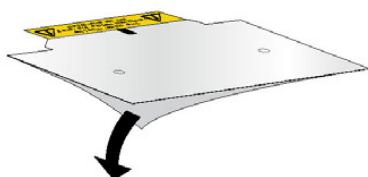
Loose parts



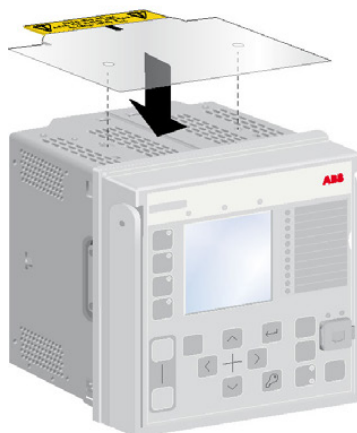
Attaching the protective film



①



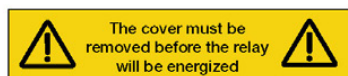
②



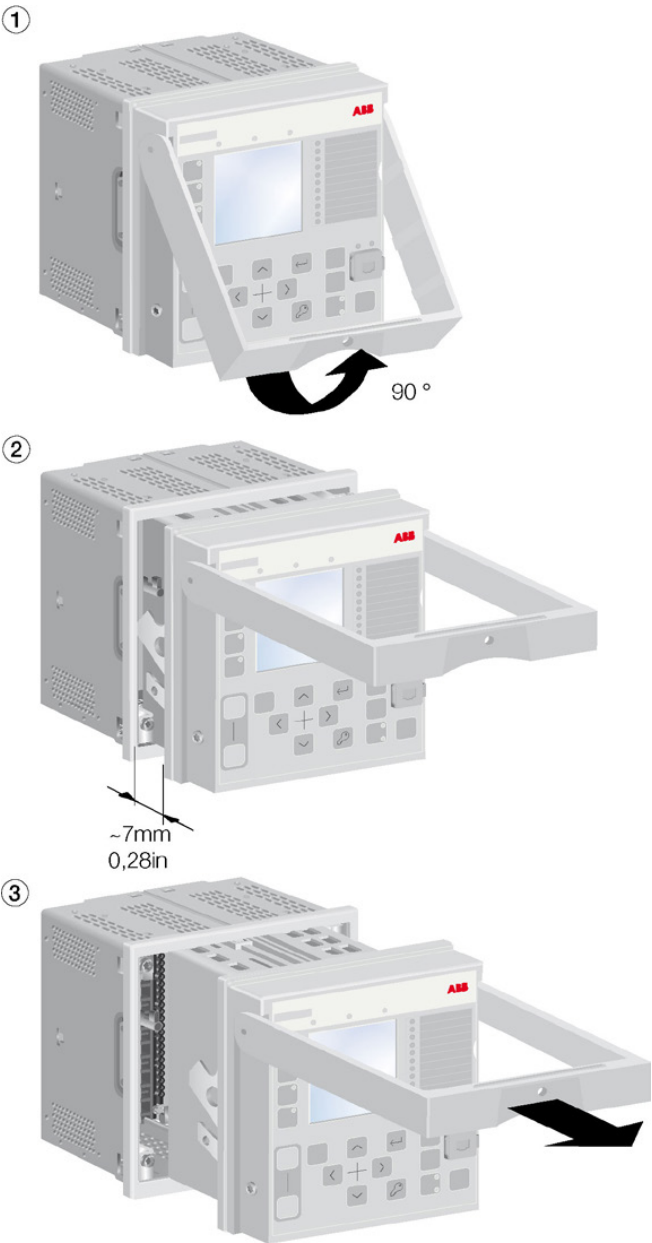
③



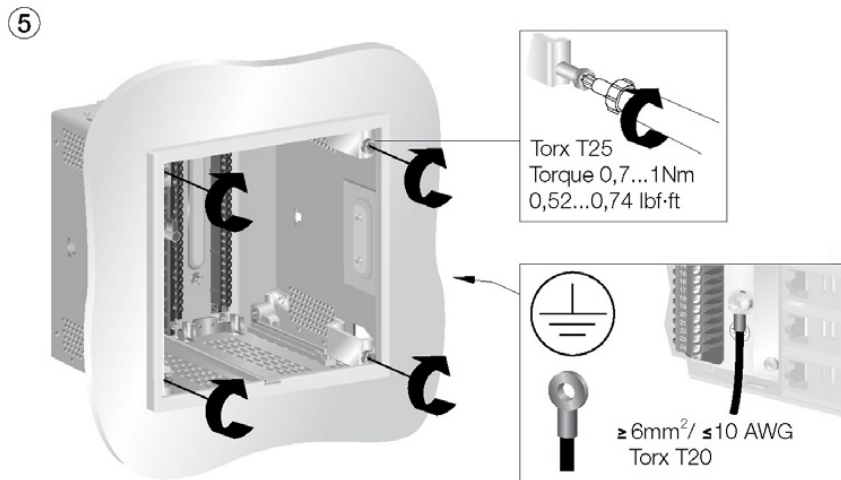
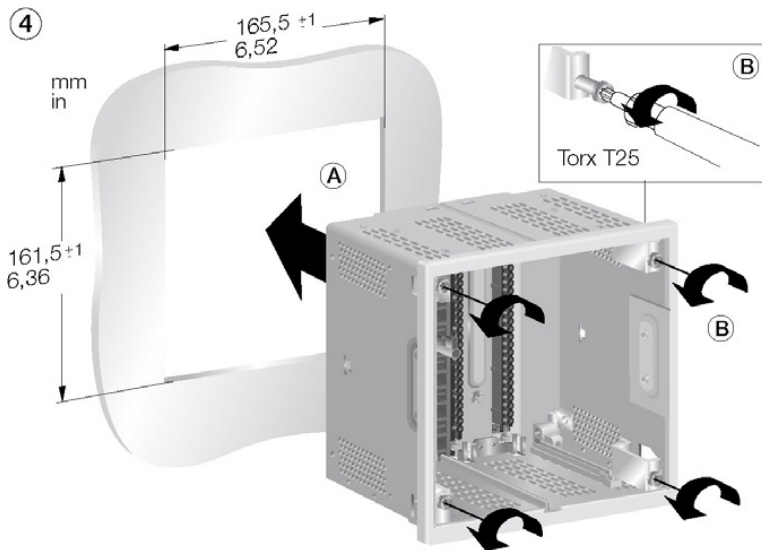
④



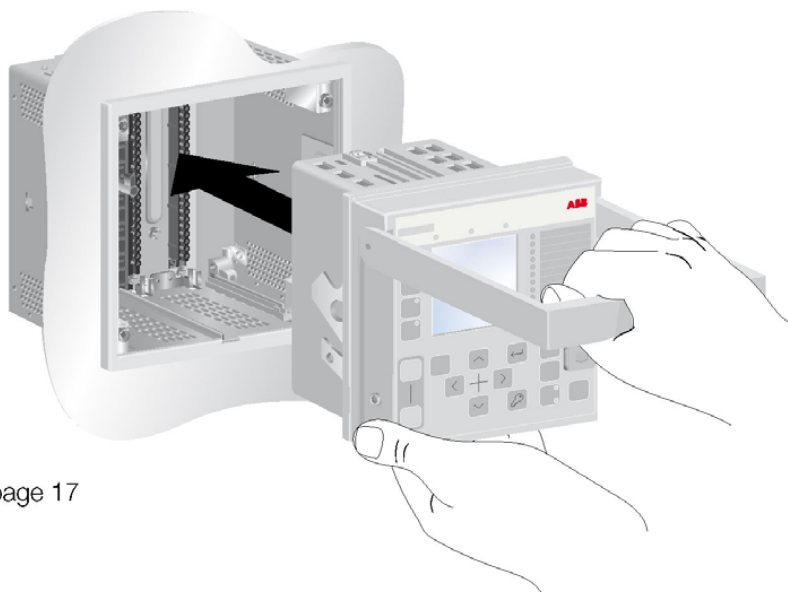
Withdrawing the plug-in unit from the case



Flush mounting

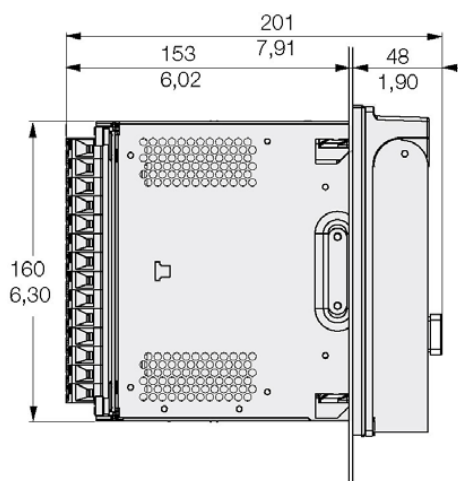
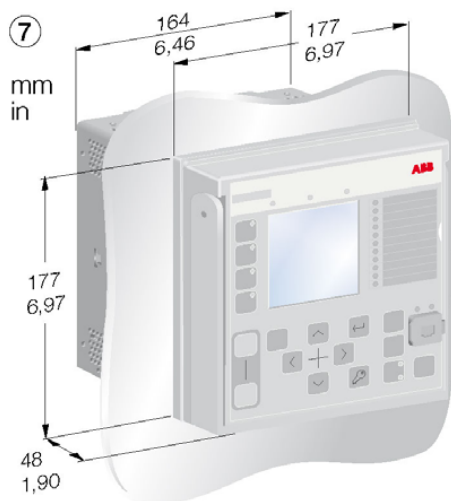


⑥

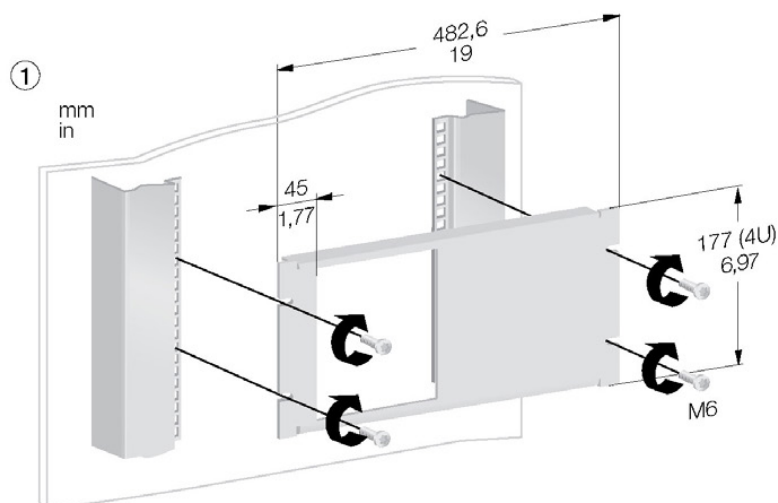
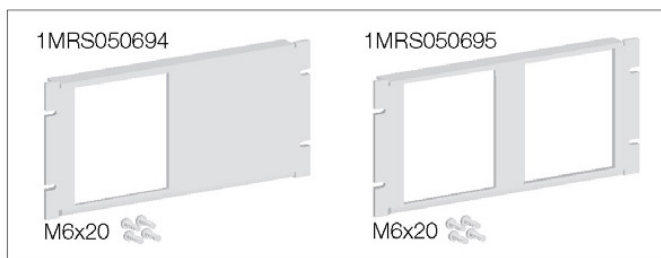


See page 17

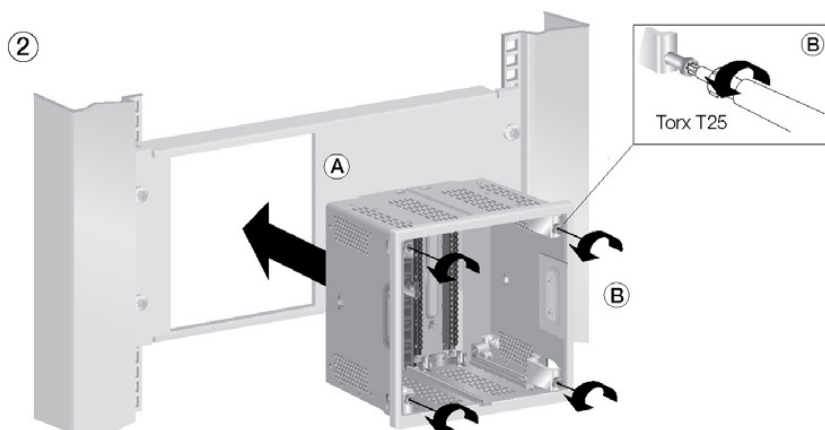
⑦



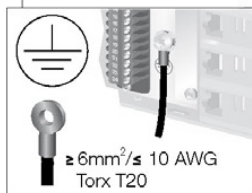
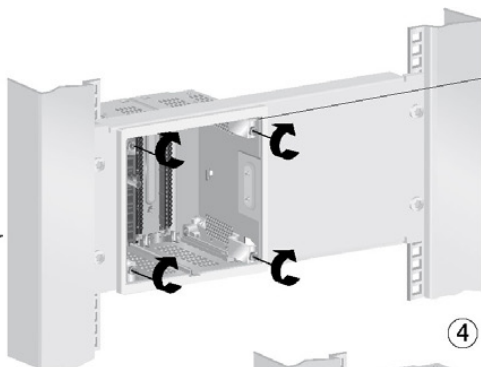
19" Rack mounting



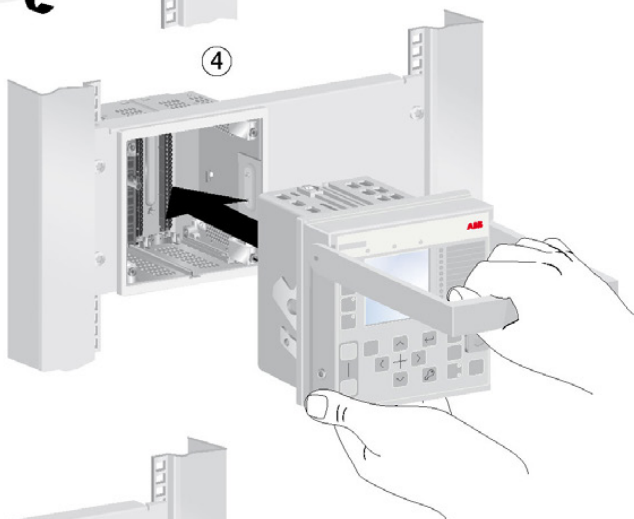
See page 6



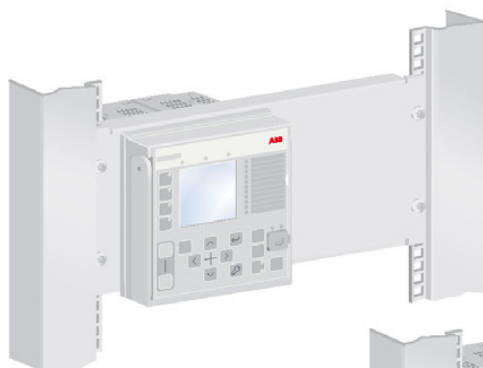
③



④



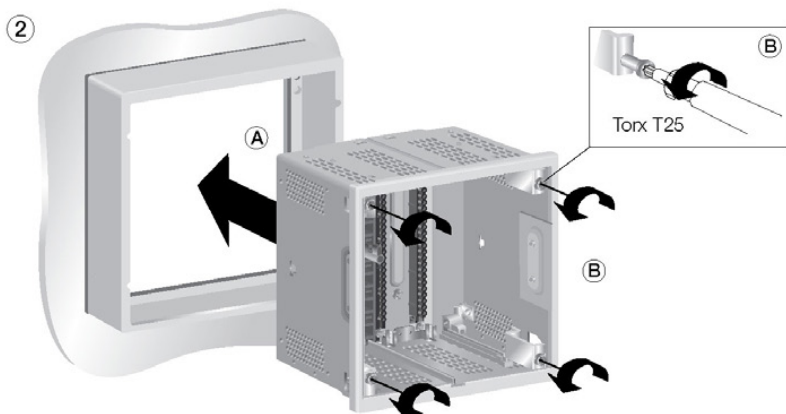
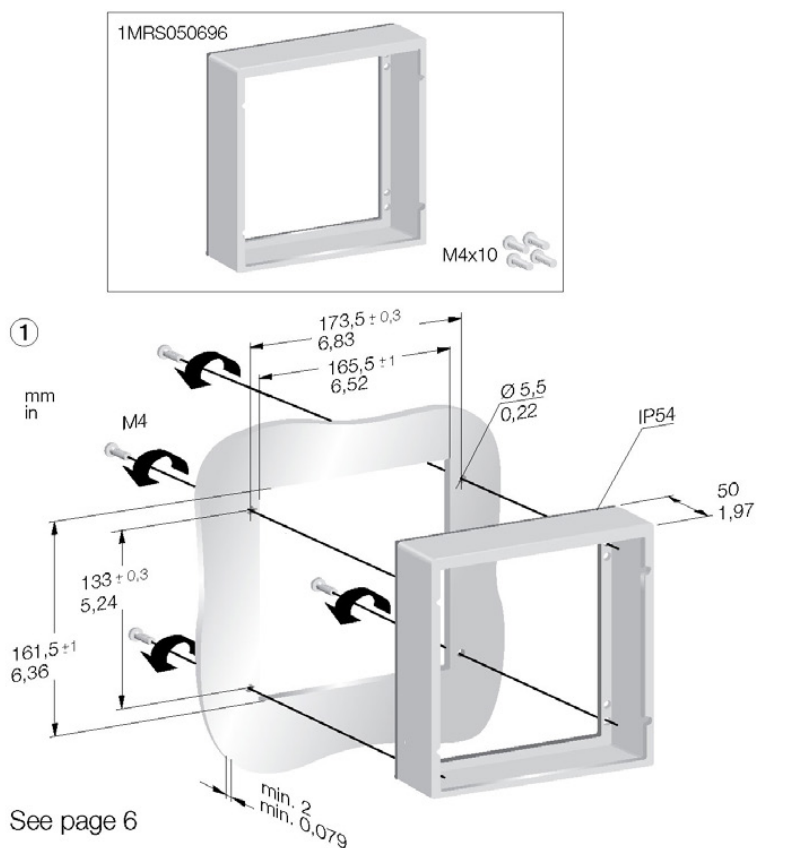
⑤



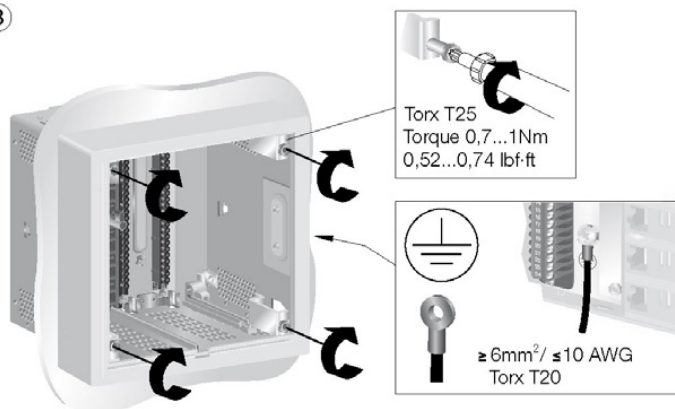
See pages 17



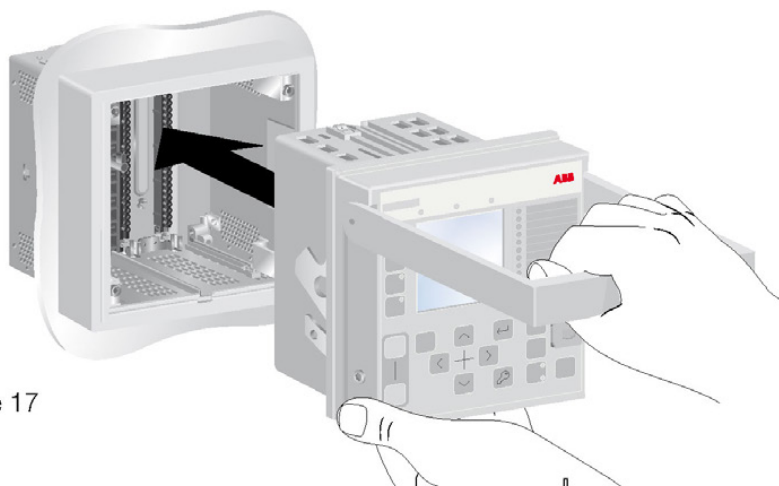
Semi-Flush mounting



3

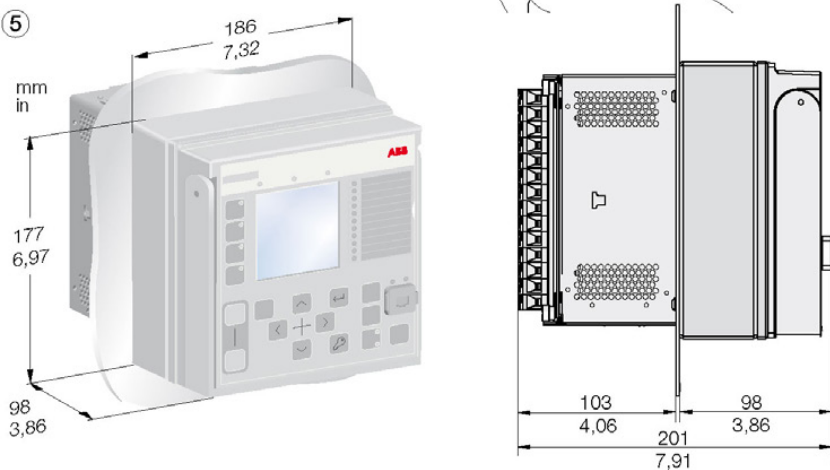


4

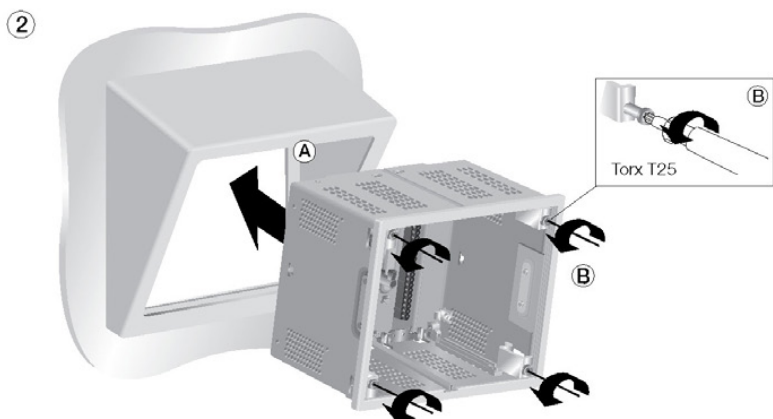
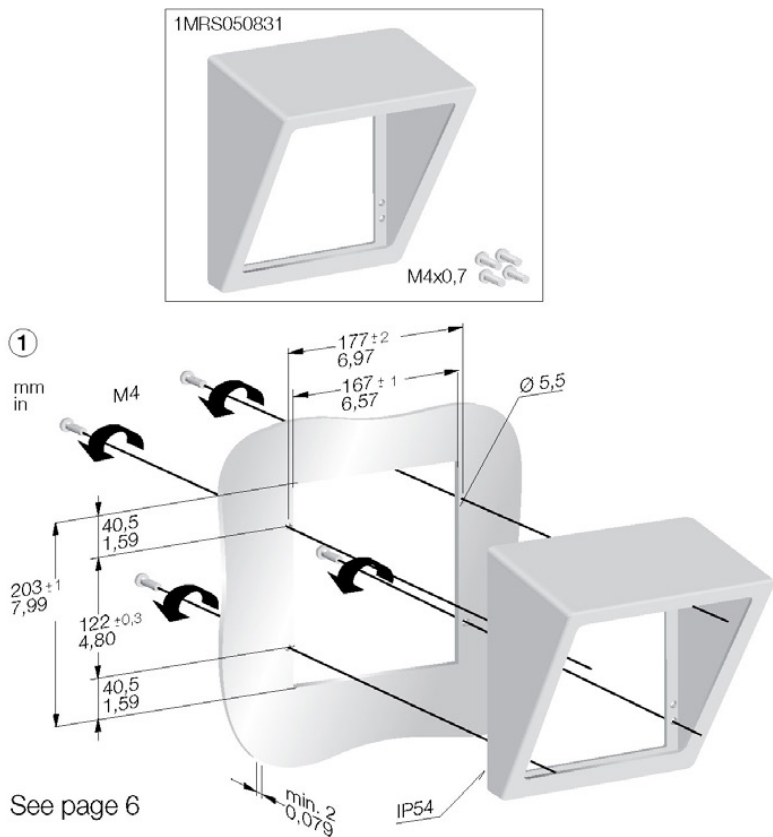


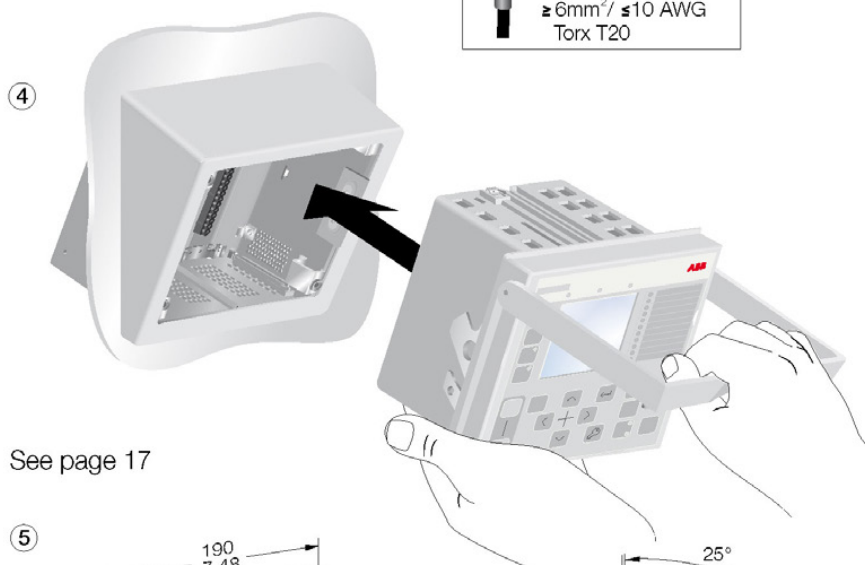
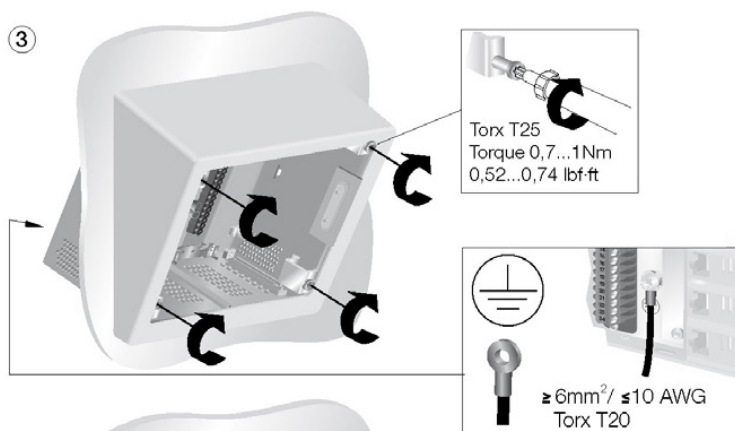
See page 17

5

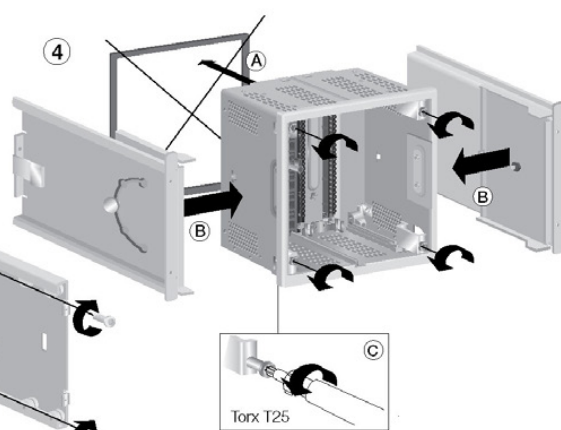
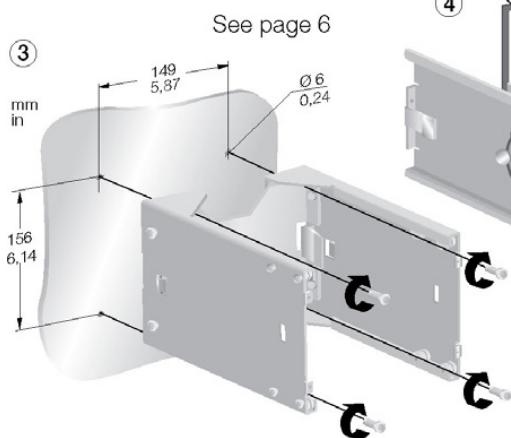
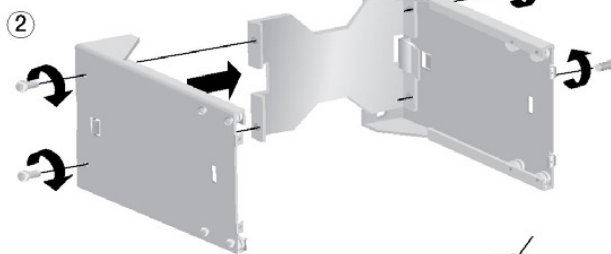
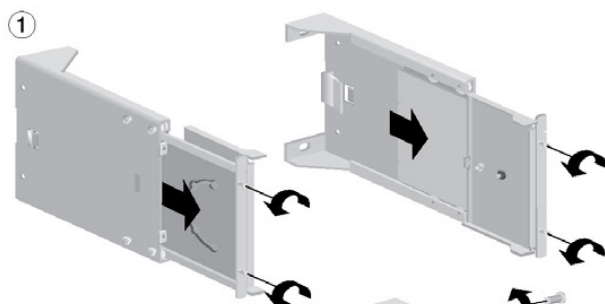
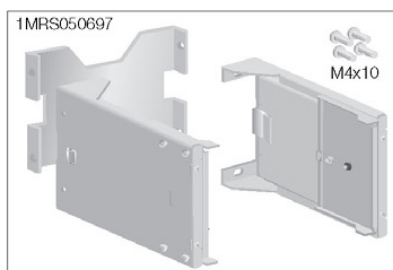


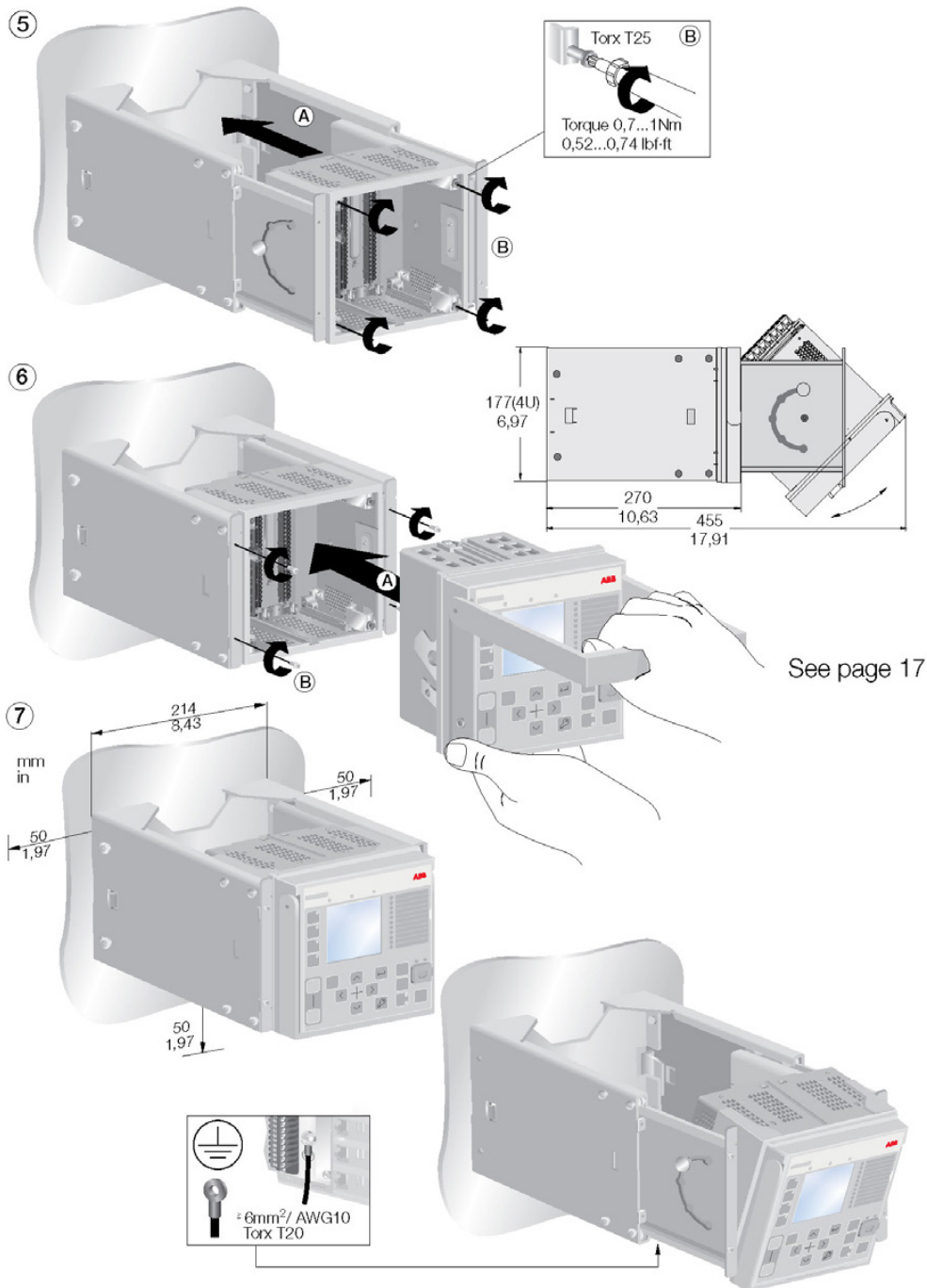
Inclined Semi-Flush mounting



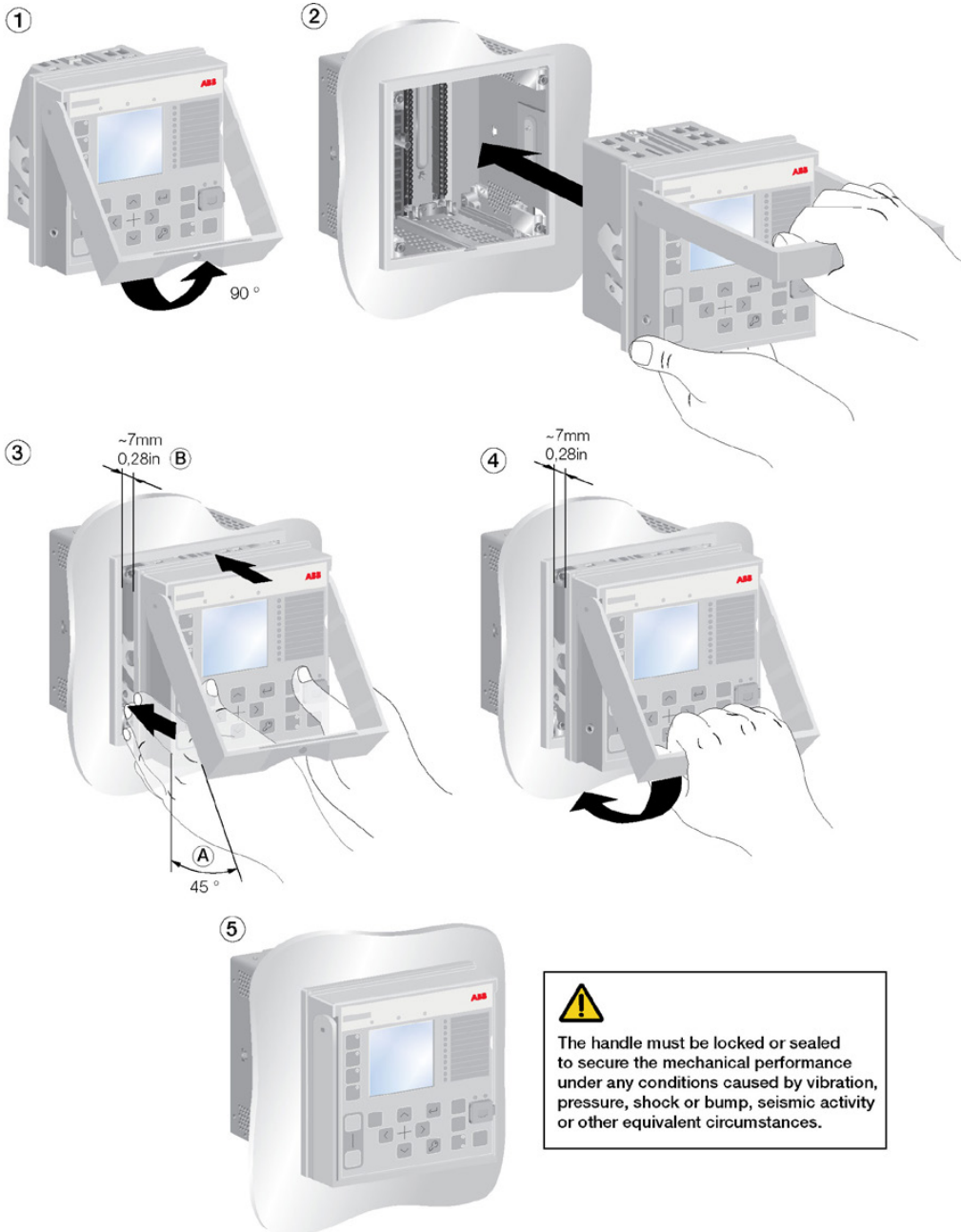


Wall mounting



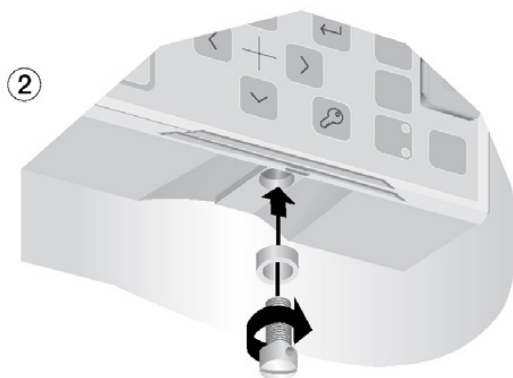
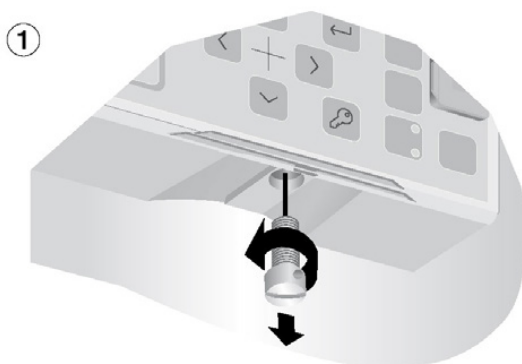


Inserting the plug-in unit into the case

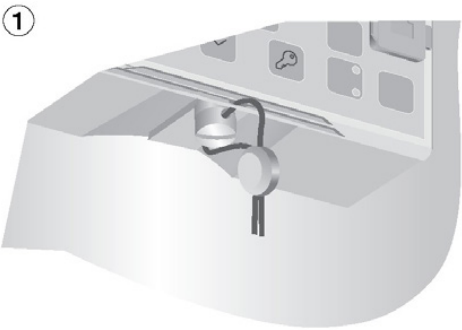


Locking the handle

See page 4



Sealing the handle



Contacts

ABB Distribution Solutions

Distribution Automation

P.O. Box 699

FI-65101 VAASA, Finland

Phone +358 10 22 11

Fax +358 10 22 41094

ABB India Limited

Distribution Automation

Maneja Works

Vadodara-390013, India

Phone: +91 265 6724402

Fax: +91 265 6724407

Email: IN-da.sales@abb.com

—
abb.com/substationautomation