

# Installation Instructions

## For

# DODGE® COMBINATION TIGEAR® REDUCERS

## with J-Mount Brackets

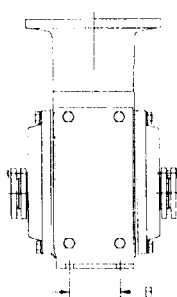
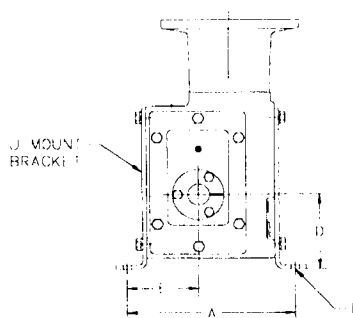
### SIZES C 150, C200, C262, C350

THE MOUNTING FEET AND HARDWARE CONTAINED IN THIS PACKAGE WILL ALLOW CONVERSION FROM A HORIZONTALLY MOUNTED REDUCER TO A VERTICALLY MOUNTED REDUCER.

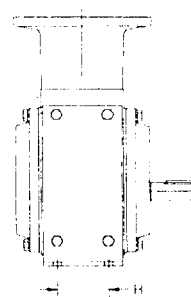
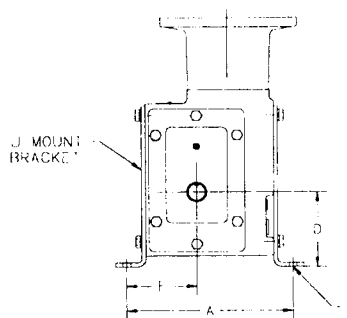
#### INSTRUCTIONS

1. Remove and discard horizontal mounting feet (if provided).
2. Attach (2) J-Mount Brackets to the gearcase using the hex head screws and lock-washers provided in package (Ref. to picture).

HOLLOW SHAFT  
(STRAIGHT AND TAPERED)



SOLID SHAFT



| CASE SIZE | STOCK NUMBER | KIT NUMBER   | FOOT NUMBER | A      | B     | D     | E       | F (BOLT) |
|-----------|--------------|--------------|-------------|--------|-------|-------|---------|----------|
| C150      | 6011826      | 411642-01-GA | 79035-41-F  | 200MM  | 63MM  | 90MM  | 86.4MM  | 8MM      |
|           |              |              |             | 7.87"  | 2.48" | 3.54" | 3.40"   | 5/16"    |
| C200      | 6011833      | 411642-01-GB | 79035-41-G  | 250MM  | 80MM  | 100MM | 114.8MM | 10MM     |
|           |              |              |             | 9.84"  | 3.15" | 3.94" | 4.52"   | 3/8"     |
| C262      | 6011840      | 411642-01-GC | 79035-41-H  | 315MM  | 100MM | 125MM | 144MM   | 10MM     |
|           |              |              |             | 12.40" | 3.94" | 4.92" | 5.67"   | 3/8"     |
| C350      | 6011857      | 411642-01-GD | 79035-41-J  | 400MM  | 125MM | 160MM | 182.4MM | 12MM     |
|           |              |              |             | 15.75" | 4.92" | 6.30" | 7.18"   | 1/2"     |

**WARNING:** Because of the possible danger to persons(s) or property from accidents which may result from the improper use of products, it is important that correct procedures be followed. Products must be used in accordance with the engineering information specified in the catalog. Proper installation, maintenance and operation procedures must be observed. The instructions in the instruction manuals must be followed. Inspections should be made as necessary to assure safe operation under prevailing conditions. Proper guards and other suitable safety devices or procedures as may be desirable or as may be specified in safety codes should be provided, and are neither provided by Baldor Electric nor are the responsibility of Baldor Electric. This unit and its associated equipment must be installed, adjusted and maintained by qualified personnel who are familiar with the construction and operation of all equipment in the system and the potential hazards involved. When risk to persons or property may be involved, a holding device must be an integral part of the driven equipment beyond the speed reducer output shaft.



World Headquarters  
P.O. Box 2400, Fort Smith, AR 72902-2400 U.S.A., Ph: (1) 479.646.4711, Fax (1) 479.648.5792, International Fax (1) 479.648.5895  
Dodge Product Support  
6040 Ponders Court, Greenville, SC 29615-4617 U.S.A., Ph: (1) 864.297.4800, Fax: (1) 864.281.2433  
[www.baldor.com](http://www.baldor.com)

© Baldor Electric Company

All Rights Reserved. Printed in USA.

MN1609  
(Replaces 499027)



06/30/09