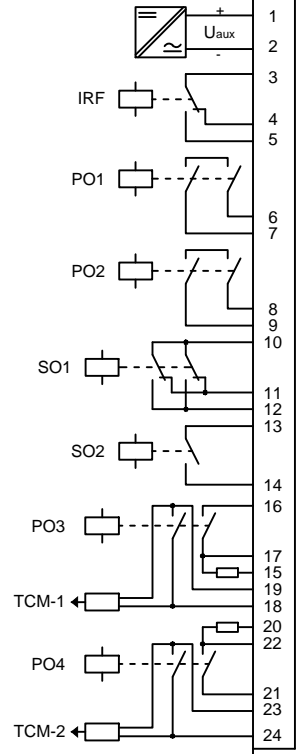
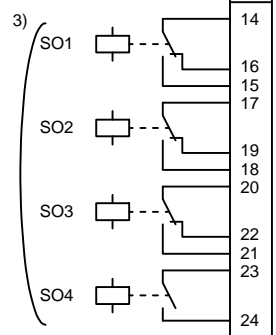


REM615

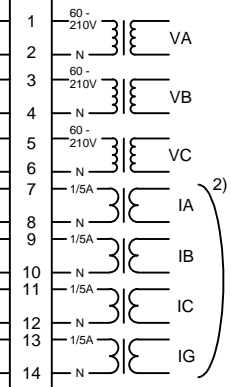
X100



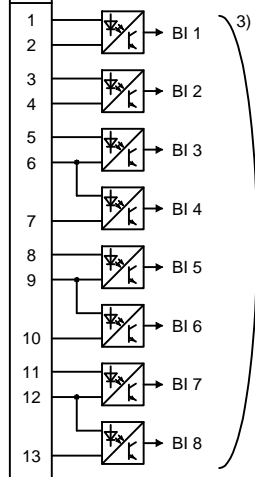
X110



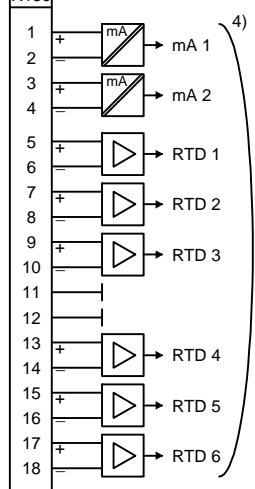
X120



X110



X130



X13

Light sensor input 1 ¹⁾

X14

Light sensor input 2 ¹⁾

X15

Light sensor input 3 ¹⁾

- 1) Optional
- 2) The IED features an automatic short-circuit mechanism in the CT connector when plug-in unit is detached.
- 3) BIO0005 module. Alternative BIO0007 module.
- 4) Optional RTD0001 module. Alternative BIO0006 module.