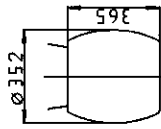
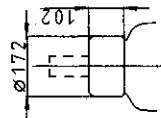


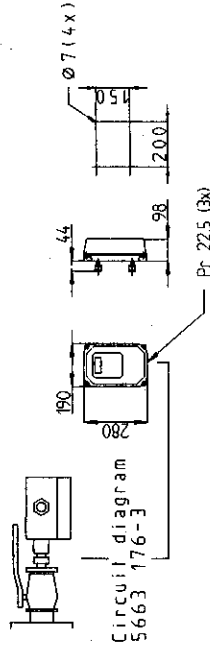
Shield oil-side
(Additional accessories)
LF 170 046-V or
LF 170 046-VP



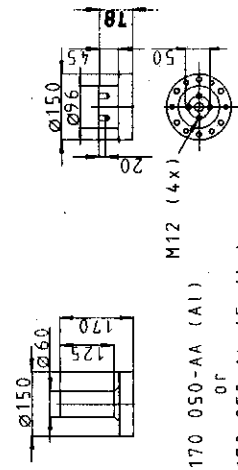
Shield SF6-side
(Additional accessories)
LF 170 046-F



Pressure supervision equipment
LF 410 024-K or LF 410 024-L
(Additional accessories)



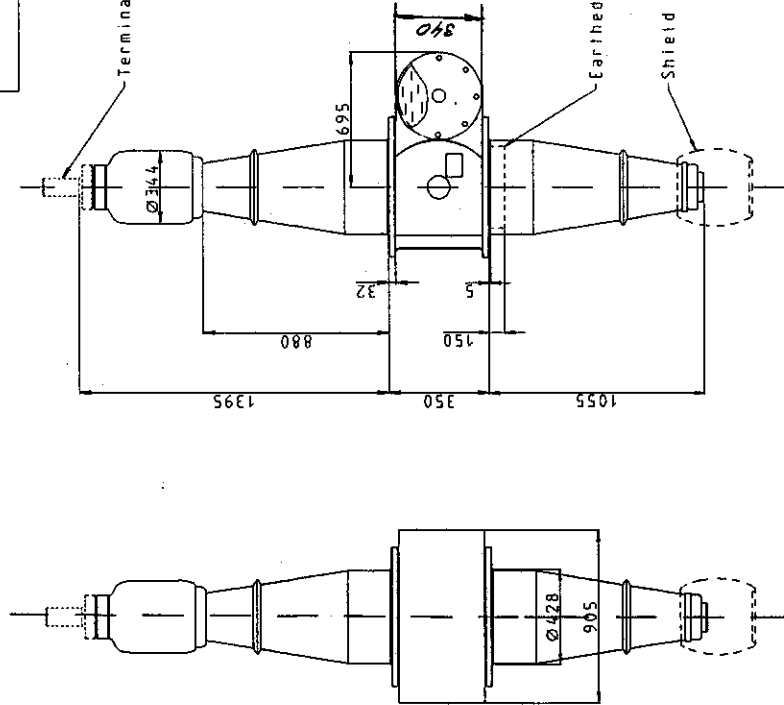
Terminal stud SF6-side
(Additional accessories)



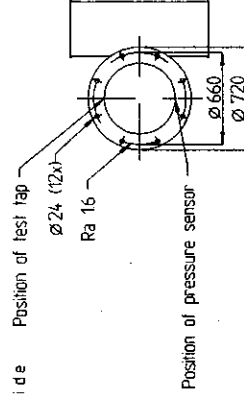
LF 170 050-AA (Al)
or

LF 170 050-AL (Cu/Ag)

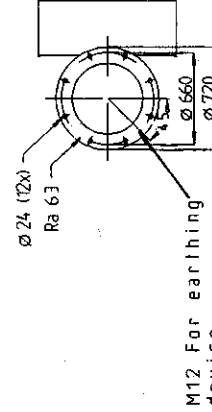
LF 170 050-AH



Flange SF6-side



Flange oil-side



Electrical data

Ratings
Rated voltage 550 kV
Max. phase to ground 318 kV
Rated current Vertical 2500 A
Rated current Horizontal 1600 A

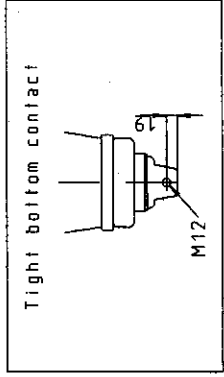
Test voltages
Lighting impulse 1675 kV
Switching impulse 1300 kV

Routine test
Power frequency 750 kV

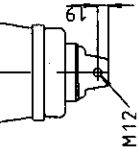
ABB Components AB

Bushing GOEK 1675
No. Horiz. 1600 A
Un./ly 550/318 kV Vert. 2500 A
Test LI/SI/AC 1675/1300/750 kV
Year L 1055 mm M 495 kg
PF %C1/C2

Catalogue number: LF 124 013-A



Tight bottom contact



M12

Accepted by quote	Accepted for prod by	Description (English)	DATA ORIGINAL
Design checked by Heyman	Drawn by ANDERSSON	GOEK 1675 FE=0	File name
Drawing checked by JONSSON	Issued by Year-Week COM/BK 94 31	Description (own language)	Lang Sheet
<p>ABB ABB Components</p>		2753 015-33	Rev. Cont.

1	310 added	4	11	11
Rev. No.	Revision	Month	Year	Week

We reserve all rights in this document. In the information contained therein without express authority is strictly forbidden. ABB is

Sheet	Design checked by	Dept	Year	Cont
-------	-------------------	------	------	------