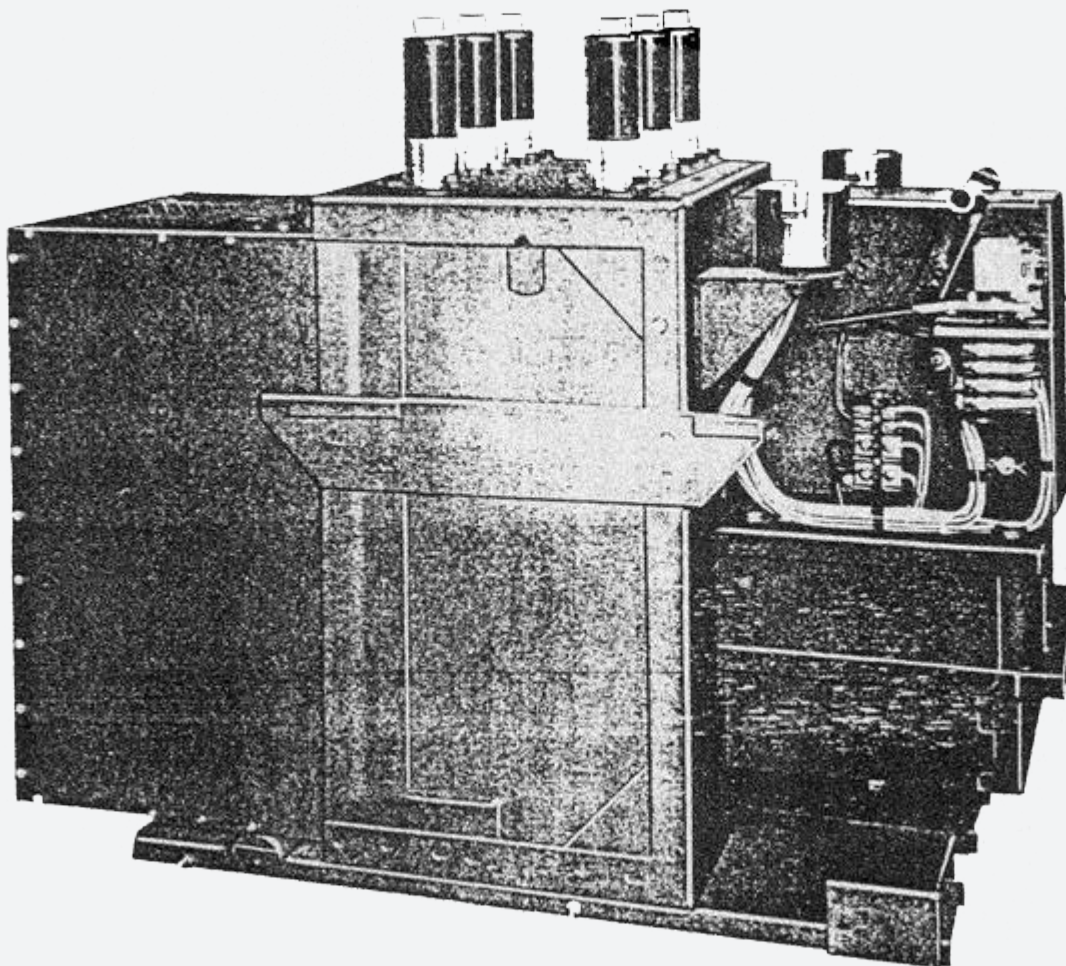


RENEWAL PARTS [GE LEGACY DOCUMENT]

Type AM-5-150 Magne-Blast circuit breaker

GE legacy product
documentation



TYPE AM-5-150 MAGNE-BLAST CIRCUIT BREAKER

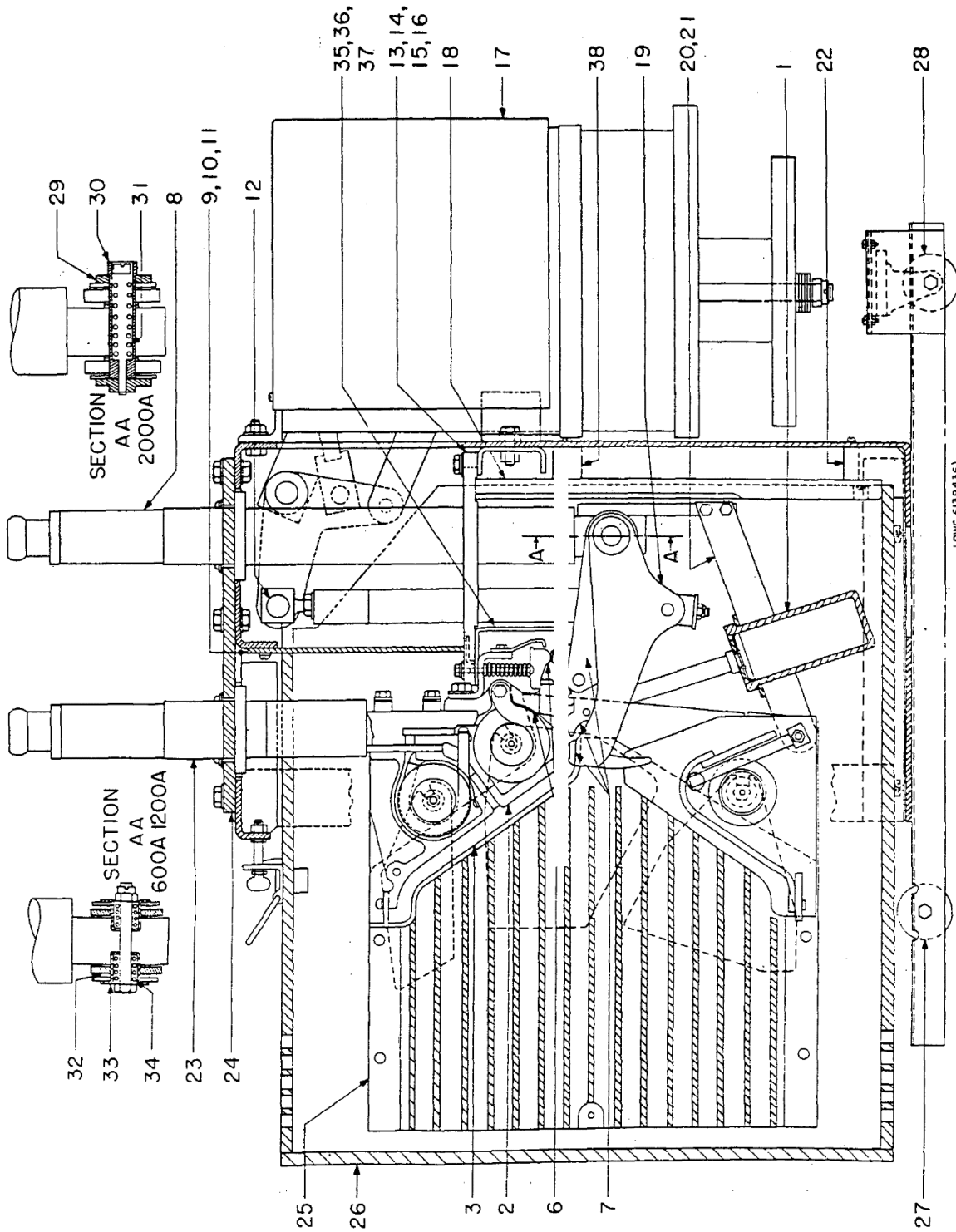


Fig. 2. Cross-section of breaker

TYPE AM-5-150 MAGNE-BLAST CIRCUIT BREAKER

GEF-3486C

PARTS RECOMMENDED FOR NORMAL MAINTENANCE

| Fig. No. | Ref. No. | Number Required for AM-5-150- | | | | | | | | | | | | | | | | | | Cat. No. | Description |
|----------|----------|-------------------------------|----|----|----|----|----|-------------|----|----|----|----|-------------|----|----|----|----|----|----|-------------|--|
| | | 600 ampere | | | | | | 1200 ampere | | | | | 2000 ampere | | | | | | | | |
| | | 3 | 3Z | 4 | 4Z | 5 | 6 | 7 | 3 | 3Z | 4 | 5 | 7 | 3 | 3Y | 4 | 5 | 6 | 7 | | |
| 2 | 1 | 3 | 3 | 3 | 3 | 3 | 3 | 3 | 3 | 3 | 3 | 3 | 3 | 3 | 3 | 3 | 3 | 3 | 3 | 6315499P1 | Booster cylinder |
| 2 | 2 | 3 | | 3 | | 3 | 3 | | 3 | | 3 | 3 | | 3 | | 3 | 3 | 3 | 3 | 6229975G3 | Stationary arcing contact and arc runner |
| 2 | 2 | | 3 | | 3 | | | 3 | | 3 | | | 3 | | 3 | | | | 3 | 6547728G1 | Stationary arcing contact and arc runner |
| 2 | 3 | 3 | 3 | | | | | | 3 | 3 | | | | | 3 | 3 | | | | 6193967G18 | Upper insulation |
| 2 | 3 | | | | | | | | | | | | | | 3 | 3 | | | | 6193967G17 | Upper insulation |
| 2 | 3 | | | 6 | 6 | 6 | 6 | 6 | | | 6 | 6 | 6 | | | 6 | 6 | 6 | 6 | 6412207G1 | Upper insulation |
| 2 | 4 | 1 | 1 | 1 | 1 | 1 | 1 | 1 | 1 | 1 | 1 | 1 | 1 | 1 | 1 | 1 | 1 | 1 | 1 | See page 11 | Trip coil |
| 2 | 5 | 1 | 1 | 1 | 1 | 1 | 1 | 1 | 1 | 1 | 1 | 1 | 1 | 1 | 1 | 1 | 1 | 1 | 1 | See page 11 | Closing coil |
| 2 | 6 | 3 | | 3 | | 3 | | | 3 | | 3 | 3 | | | | | | | | 6316606G18 | Stationary intermediate and primary contact assembly |
| 2 | 6 | | 3 | | 3 | | | 3 | | 3 | | | 3 | | | | | | | 6316613G23 | Stationary intermediate and primary contact assembly |
| 2 | 6 | | | | | | 3 | | | | | 3 | | | | | | | | 6316613G15 | Stationary intermediate and primary contact assembly |
| 2 | 6 | | | | | | | | | | | | | 3 | | 3 | | | | 6193967G19 | Stationary intermediate and primary contact assembly |
| 2 | 6 | | | | | | | | | | | | | | 3 | | | | 3 | 6316613G24 | Stationary intermediate and primary contact assembly |
| 2 | 6 | | | | | | | | | | | | | | | | 3 | 3 | | 6316606G12 | Stationary intermediate and primary contact assembly |
| 4 | 105 | 3 | | 3 | | 3 | 3 | | 3 | | 3 | 3 | | | | | | | | 6318215P6 | *Contact support |
| 4 | 105 | | 3 | | 3 | | | 3 | | 3 | | | 3 | | | 3 | | | | 6551072G1 | *Contact support |
| 4 | 105 | | | | | | | | | | | | | | | | | | | 6217066G4 | *Contact support |
| 4 | 105 | | | | | | | | | | | | | | | | | 3 | 3 | 6217066G5 | *Contact support |
| 4 | 105 | | | | | | | | | | | | | | | 3 | | | | 6217066G6 | *Contact support |
| 4 | 106 | 3 | 3 | 3 | 3 | 3 | 3 | 3 | 3 | 3 | 3 | 3 | 3 | 3 | | | | | | 6440519 | *Locking plate |
| 4 | 107 | 12 | 12 | 12 | 12 | 12 | 12 | 12 | 12 | 12 | 12 | 12 | 12 | 12 | | | | | | 6440517 | *Spring guide |
| 4 | 108 | 3 | | 3 | | 3 | | | 3 | | 3 | 3 | | | | | | | | 6318217P2 | *Support for spring |
| 4 | 108 | | 3 | | 3 | | | 3 | | | 3 | | 3 | | | | | | | 6514168P1 | *Support for spring |
| 4 | 108 | | | | | | 3 | | | | | 3 | | | | | | | | 6318217P1 | *Support for spring |
| 4 | 109 | 12 | 12 | 12 | 12 | 12 | | | 12 | 12 | 12 | | | | | | | | | 6370616 | *Spring |
| 4 | 109 | | | | | | 12 | 12 | | | | 12 | 12 | | | | | | | 6509731 | *Spring |
| 4 | 109 | | | | | | | | | | | | | 21 | 21 | 21 | 21 | 21 | 21 | 6172977 | *Spring |
| 4 | 110 | 3 | 3 | 3 | 3 | 3 | 3 | 3 | 3 | 3 | 3 | 3 | 3 | | | | | | | 6440518 | *Retainer |
| 4 | 110 | | | | | | | | | | | | | 3 | | | | | | 6440994 | *Retainer |
| 4 | 110 | | | | | | | | | | | | | | | | 3 | | | 6243070 | *Retainer |
| 4 | 110 | | | | | | | | | | | | | | | 3 | 3 | 3 | 3 | 6508104P1 | *Retainer |
| 4 | 111 | 12 | 12 | 12 | 12 | 12 | 12 | 12 | 12 | 12 | 12 | 12 | 12 | | | | | | | 6476798G1 | *Stationary primary contact |
| 4 | 111 | | | | | | | | | | | | | 21 | 21 | 21 | 21 | | | 6440995 | *Stationary primary contact |
| 4 | 111 | | | | | | | | | | | | | | | | | 21 | 21 | 6477100G1 | *Stationary primary contact |
| 4 | 112 | 3 | | 3 | | 3 | 3 | | 3 | | 3 | 3 | | | | | | | | 6300108P1 | *Shield |
| 4 | 112 | | 3 | | 3 | | | 3 | | 3 | | | 3 | | | | | | | 6441944 | *Shield |
| 4 | 112 | | | | | | | | | | | | | | | | | | | 6441104 | *Shield |
| 4 | 112 | | | | | | | | | | | | | | | | 3 | 3 | 3 | 6300107P1 | *Shield |
| 4 | 112 | | | | | | | | | | | | | | 3 | | | | | 6441943 | *Shield |
| 4 | 120 | | | | | | | | | | | | | 21 | 21 | 21 | 21 | 21 | 21 | 6243072 | *Insulation |
| 2 | 7 | 3 | 3 | 3 | 3 | 3 | 3 | 3 | 3 | 3 | 3 | 3 | 3 | | | | | | | 6316606G13 | Movable primary, intermediate, and arcing contact assembly |
| 2 | 7 | | | | | | | | | | | | | 3 | 3 | 3 | 3 | 3 | 3 | 6316606G15 | Movable primary, intermediate, and arcing contact assembly |
| 5 | 150 | 3 | 3 | 3 | 3 | 3 | 3 | 3 | 3 | 3 | 3 | 3 | 3 | | | | | | | 6217063G8 | *Contact arm |
| 5 | 150 | | | | | | | | | | | | | 3 | 3 | 3 | 3 | | | 6420220G4 | *Contact arm |
| 5 | 150 | | | | | | | | | | | | | | | | | 3 | 3 | 6420220G8 | *Contact arm |
| 5 | 151 | | | | | | | | | | | | | | | | | | | 6076405P560 | *Pin |
| 5 | 152 | 3 | 3 | 3 | 3 | 3 | 3 | 3 | 3 | 3 | 3 | 3 | 3 | | | | | | | 6247780 | *Pin |
| 5 | 152 | | | | | | | | | | | | | 3 | 3 | 3 | 3 | 3 | 3 | 6440108 | *Pin |
| 5 | 153 | 3 | 3 | 3 | 3 | 3 | | | 3 | 3 | 3 | | | | | | | | | 6326299P2 | *Movable intermediate contact |
| 5 | 153 | | | | | | 3 | 3 | | | | 3 | 3 | | | | | | | 6275256G1 | *Movable intermediate contact |
| 5 | 153 | | | | | | | | | | | | | 3 | 3 | 3 | 3 | 3 | 3 | 6420221G2 | *Movable intermediate contact |
| 5 | 154 | 3 | 3 | 3 | 3 | 3 | 3 | 3 | 3 | 3 | 3 | 3 | 3 | | | | | | | 6420271G1 | *Movable arcing contact |
| 5 | 154 | | | | | | | | | | | | | 3 | 3 | 3 | 3 | 3 | 3 | 6420272G1 | *Movable arcing contact |
| 5 | 155 | 3 | 3 | 3 | 3 | 3 | 3 | 3 | 3 | 3 | 3 | 3 | 3 | | | | | | | 6245402P1 | *Pin |
| 5 | 155 | | | | | | | | | | | | | 3 | 3 | 3 | 3 | 3 | 3 | 6440115 | *Pin |
| 5 | 156 | 3 | 3 | 3 | 3 | 3 | 3 | 3 | 3 | 3 | 3 | 3 | 3 | | | | | | | 6149985 | *Spring guide |

* Seldom required. Assembly only recommended for normal maintenance.

| Fig. No. | Ref. No. | Number Required for AM-5-150- | | | | | | | | | | | | | | | | | Cat. No. | Description | |
|----------|----------|-------------------------------|----|---|----|---|---|---|-------------|----|---|---|---|-------------|----|---|---|---|----------|--------------|--------------------------------------|
| | | 600 ampere | | | | | | | 1200 ampere | | | | | 2000 ampere | | | | | | | |
| | | 3 | 3Z | 4 | 4Z | 5 | 6 | 7 | 3 | 3Z | 4 | 5 | 7 | 3 | 3Y | 4 | 5 | 6 | | | 7 |
| 5 | 156 | | | | | | | | | | | | | 3 | 3 | 3 | 3 | 3 | 3 | 6440172 | *Spring guide |
| 5 | 157 | 3 | 3 | 3 | 3 | 3 | | | 3 | 3 | 3 | | | 3 | 3 | 3 | 3 | | | 6172869 | *Outer spring |
| 5 | 157 | | | | | | 3 | 3 | | | | 3 | 3 | | | | | 3 | 3 | 6509745 | *Outer spring |
| 5 | 158 | 3 | 3 | 3 | 3 | 3 | | | 3 | 3 | 3 | | | 3 | 3 | 3 | 3 | | | 6172949 | *Intermediate spring |
| 5 | 158 | | | | | | 3 | 3 | | | | 3 | 3 | | | | | 3 | 3 | 6509746 | *Intermediate spring |
| 5 | 159 | 3 | 3 | 3 | 3 | 3 | | | 3 | 3 | 3 | | | 3 | 3 | 3 | 3 | | | 6174948 | *Inner spring |
| 5 | 159 | | | | | | 3 | 3 | | | | 3 | 3 | | | | | 3 | 3 | 6509747 | *Inner spring |
| 5 | 160 | 3 | 3 | 3 | 3 | 3 | | | 3 | 3 | 3 | | | | | | | | | 6149967P1 | *Insulation cup |
| 5 | 160 | | | | | | 3 | 3 | | | | 3 | 3 | | | | | | | 6149967P2 | *Insulation cup |
| 5 | 161 | 3 | 3 | | | | | | 3 | 3 | | | | 3 | 3 | | | | | 6193967G23 | *Tube and piston assembly |
| 5 | 161 | | | 3 | 3 | 3 | 3 | 3 | | | 3 | 3 | 3 | | | 3 | 3 | 3 | 3 | 6316606G23 | *Tube and piston assembly |
| 2 | 8 | 3 | 3 | 3 | 3 | | | | | | | | | | | | | | | 6420344G1 | Front bushing |
| 2 | 8 | | | | | 3 | 3 | 3 | | | | | | | | | | | | 6420344G7 | Front bushing |
| 2 | 8 | | | | | | | | 3 | 3 | 3 | 3 | 3 | | | | | | | 6420344G3 | Front bushing |
| 2 | 8 | | | | | | | | | | | | | 3 | 3 | 3 | 3 | 3 | 3 | 6420344G5 | Front bushing |
| 2 | 9 | 3 | 3 | 3 | 3 | 3 | | | 3 | 3 | 3 | | | 3 | 3 | 3 | | | | 6245722P1 | Upper barrier (inner and outer) |
| 2 | 10 | | | | | | 1 | 1 | | | | 1 | 1 | | | | | 1 | 1 | 6245722P1 | Upper barrier (inner) |
| 2 | 11 | | | | | | 2 | 2 | | | | 2 | 2 | | | | | 2 | 2 | 6245722P2 | Upper barrier (outer) |
| 2 | 12 | 1 | 1 | 1 | 1 | 1 | 1 | 1 | 1 | 1 | 1 | 1 | 1 | 1 | 1 | 1 | 1 | 1 | 1 | 6440166 | Pin for operating rod |
| 2 | 13 | 3 | 3 | 3 | 3 | | | | | | | | | | | | | | | 6420266G1 | Insulation, horizontal |
| 2 | 13 | | | | | 3 | | | 3 | 3 | 3 | | | | | | | | | 6420266G2 | Insulation, horizontal |
| 2 | 14 | | | | | | 1 | 1 | | | | 1 | 1 | | | | | | | 6420266G4 | Insulation, horizontal, left |
| 2 | 15 | | | | | | 1 | 1 | | | | 1 | 1 | | | | | | | 6420266G8 | Insulation, horizontal, center |
| 2 | 16 | | | | | | 1 | 1 | | | | 1 | 1 | | | | | | | 6420266G5 | Insulation, horizontal, right |
| 2 | 13 | | | | | | | | | | | | | 3 | 3 | 3 | 3 | | | 6420266G3 | Insulation, horizontal |
| 2 | 14 | | | | | | | | | | | | | | | | | 1 | 1 | 6420266G6 | Insulation, horizontal, left |
| 2 | 15 | | | | | | | | | | | | | | | | | 1 | 1 | 6420266G9 | Insulation, horizontal, center |
| 2 | 16 | | | | | | | | | | | | | | | | | 1 | 1 | 6420266G7 | Insulation, horizontal, right |
| 2 | 17 | 1 | 1 | 1 | 1 | 1 | 1 | 1 | 1 | 1 | 1 | 1 | 1 | 1 | 1 | 1 | 1 | 1 | 1 | See page 13 | Solenoid mechanism |
| 2 | 18 | 1 | 1 | | | | | | 1 | 1 | | | | 1 | 1 | | | | | 6193967G30 | Front barrier assembly |
| 2 | 18 | | | 1 | 1 | 1 | | | | | 1 | | | | | 1 | 1 | | | 6316606G30 | Front barrier assembly |
| 2 | 18 | | | | | | 1 | 1 | | | | 1 | 1 | | | | | 1 | 1 | 6547718G1 | Front barrier assembly |
| 2 | 19 | 3 | 3 | 3 | 3 | 3 | 3 | 3 | 3 | 3 | 3 | 3 | 3 | 3 | 3 | 3 | 3 | 3 | 3 | See page 9 | Contact arm assembly |
| 2 | 20 | 3 | 3 | 3 | 3 | 3 | 3 | 3 | 3 | 3 | 3 | 3 | 3 | 3 | 3 | 3 | 3 | 3 | 3 | 6370753G1 | Support, left |
| 2 | 21 | 3 | 3 | 3 | 3 | 3 | 3 | 3 | 3 | 3 | 3 | 3 | 3 | 3 | 3 | 3 | 3 | 3 | 3 | 6370753G2 | Support, right |
| 2 | 22 | 1 | 1 | | | | | | 1 | 1 | | | | 1 | 1 | | | | | 6247905 | Spacer |
| 2 | 22 | | | 1 | 1 | 1 | | | | | 1 | | | | | 1 | 1 | | | 6440983 | Spacer |
| 2 | 22 | | | | | | 1 | 1 | | | | 1 | 1 | | | | | 1 | 1 | 6551053P1 | Spacer |
| 2 | 23 | 3 | 3 | 3 | 3 | 3 | 3 | 3 | 3 | 3 | 3 | 3 | 3 | 3 | 3 | 3 | 3 | 3 | 3 | See page 7 | Rear bushing and arc runner assembly |
| 2 | 24 | | | | | | | | | | | | | 1 | 1 | 1 | 1 | 1 | 1 | 6420316P2 | Top plate |
| 2 | 25 | 3 | 3 | 3 | 3 | 3 | 3 | 3 | 3 | 3 | 3 | 3 | 3 | 3 | 3 | 3 | 3 | 3 | 3 | See page | Arc chute assembly |
| 2 | 26 | 1 | 1 | | | | | | 1 | 1 | | | | | | | | | | 6193967G29 | Box barrier |
| 2 | 26 | | | 1 | 1 | 1 | | | | | 1 | | | | | | | | | 6316606G29 | Box barrier |
| 2 | 26 | | | | | | 1 | 1 | | | | 1 | 1 | | | | | | | 6316613G16 | Box barrier |
| 2 | 26 | | | | | | | | | | | | | 1 | 1 | | | | | 6193967G28 | Box barrier |
| 2 | 26 | | | | | | | | | | | | | | | 1 | 1 | | | 6316606G28 | Box barrier |
| 2 | 26 | | | | | | | | | | | | | | | | | 1 | 1 | 6316613G17 | Box barrier |
| 2 | 27 | 2 | 2 | 2 | 2 | 2 | 2 | 2 | 2 | 2 | 2 | 2 | 2 | 2 | 2 | 2 | 2 | 2 | 2 | 6316606P1112 | Wheel |
| 2 | 28 | 2 | 2 | 2 | 2 | 2 | 2 | 2 | 2 | 2 | 2 | 2 | 2 | 2 | 2 | 2 | 2 | 2 | 2 | 6316606P1107 | Wheel (swivel) |
| 2 | 29 | | | | | | | | | | | | | 3 | 3 | 3 | 3 | 3 | 3 | 6245461P2 | Bearing plate |
| 2 | 30 | | | | | | | | | | | | | 3 | 3 | 3 | 3 | | | 6245814P1 | Bearing |
| 2 | 30 | | | | | | | | | | | | | | | | | 3 | 3 | 6245814P2 | Bearing |
| 2 | 31 | | | | | | | | | | | | | 3 | 3 | 3 | 3 | 3 | 3 | 6172960 | Spring |
| 2 | 32 | 6 | 6 | 6 | 6 | 6 | 6 | 6 | 6 | 6 | 6 | 6 | 6 | 6 | 6 | 6 | 6 | 6 | 6 | 6243996 | Contact washer |
| 2 | 33 | 6 | 6 | 6 | 6 | 6 | 6 | 6 | 6 | 6 | 6 | 6 | 6 | | | | | | | 2243035 | Cup washer |
| 2 | 34 | 6 | 6 | 6 | 6 | 6 | 6 | 6 | 6 | 6 | 6 | 6 | 6 | | | | | | | 6172976 | Spring |
| 2 | 35 | | | | | | 1 | 1 | | | | 1 | 1 | | | | | 1 | 1 | 6551054P1 | Baffle, right-hand |
| 2 | 36 | | | | | | 1 | 1 | | | | 1 | 1 | | | | | 1 | 1 | 6551054P2 | Baffle, center |
| 2 | 37 | | | | | | 1 | 1 | | | | 1 | 1 | | | | | 1 | 1 | 6551054P3 | Baffle, left-hand |
| 2 | 38 | | | | | | 1 | 1 | | | | 1 | 1 | | | | | 1 | 1 | 6508798P2 | Spacer |

* Seldom required. Assembly only recommended for normal maintenance.

TYPE AM-5-150 MAGNE-BLAST CIRCUIT BREAKER

GEF-3486C

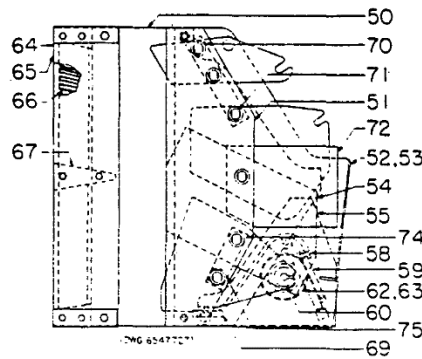


Fig. 3. Arc chute assembly

PARTS SELDOM REQUIRED

| Fig. No. | Ref. No. | Number Required for AM-5-150- | | | | | | | | | | | | | | | Cat. No. | Description | | | |
|----------|----------|-------------------------------|----|----|----|----|----|-------------|----|----|----|----|-------------|----|----|----|----------|-------------|----|-------------|------------------------------|
| | | 600 ampere | | | | | | 1200 ampere | | | | | 2000 ampere | | | | | | | | |
| | | 3 | 3Z | 4 | 4Z | 5 | 6 | 7 | 3 | 3Z | 4 | 5 | 7 | 3 | 3Y | 4 | | | 5 | 6 | 7 |
| 2 | 25 | 3 | 3 | | | | | | 3 | 3 | | | | | | | | | | 6193967G35 | Arc chute assembly |
| 2 | 25 | | | 3 | | | | | | | | | | | | | | | | 6316613G35 | Arc chute assembly |
| 2 | 25 | | | | 3 | 3 | 3 | 3 | | | 3 | 3 | 3 | | | | | | | 6316613G35 | Arc chute assembly |
| 2 | 25 | | | | | | | | | | | | | 3 | 3 | | | | | 6193967G36 | Arc chute assembly |
| 2 | 25 | | | | | | | | | | | | | | | 3 | 3 | | | 6316606G36 | Arc chute assembly |
| 2 | 25 | | | | | | | | | | | | | | | | | 3 | 3 | 6316613G36 | Arc chute assembly |
| 3 | 50 | 3 | 3 | | | | | | 3 | 3 | | | | 3 | 3 | | | | | 6193967G39 | Arc chute |
| 3 | 50 | | | 3 | 3 | 3 | 3 | 3 | | | 3 | 3 | 3 | | | 3 | 3 | 3 | 3 | 6316606G39 | Arc chute |
| 3 | 51 | | | 6 | 6 | 6 | | | | | 6 | | | | | 6 | 6 | | | 6412203P1 | Brace (right and left) |
| 3 | 51 | 3 | 3 | | | | | | 3 | 3 | | | | 3 | 3 | | | | | 6318216P1 | Brace, right |
| 3 | 51 | 3 | 3 | | | | | | 3 | 3 | | | | 3 | 3 | | | | | 6318216P2 | Brace, left |
| 3 | 51 | | | | | 6 | 6 | | | | | 6 | 6 | | | | | 6 | 6 | 6412203P3 | Brace (right and left) |
| 3 | 52 | 3 | 3 | 3 | 3 | 3 | 3 | 3 | 3 | 3 | 3 | 3 | 3 | 3 | 3 | | | | | 6420258P1 | Left-side shield |
| 3 | 52 | | | | | | | | | | | | | | | 3 | 3 | 3 | 3 | 6420257P1 | Left-side shield |
| 3 | 53 | 3 | 3 | 3 | 3 | 3 | 3 | 3 | 3 | 3 | 3 | 3 | 3 | 3 | 3 | | | | | 6420258P2 | Right-side shield |
| 3 | 53 | | | | | | | | | | | | | | | 3 | 3 | 3 | 3 | 6420257P2 | Right-side shield |
| 3 | 54 | 12 | 12 | | | | | | 12 | 12 | | | | 12 | 12 | | | | | 6370587P1 | Insulation |
| 3 | 54 | | | 12 | 12 | 12 | 12 | 12 | | | 12 | 12 | 12 | | | 12 | 12 | 12 | 12 | 6476726P1 | Insulation |
| 3 | 55 | 6 | 6 | | | | | | 6 | 6 | | | | | | 6 | 6 | | | 6318166P1 | Side shield (right and left) |
| 3 | 56 | | | 3 | 3 | 3 | 3 | 3 | | | 3 | 3 | 3 | | | 3 | 3 | 3 | 3 | 6412204P1 | Side shield (left) |
| 3 | 57 | | | 3 | 3 | 3 | 3 | 3 | | | 3 | 3 | 3 | | | 3 | 3 | 3 | 3 | 6412204P2 | Side shield (right) |
| 3 | 58 | 3 | 3 | | | | | | 3 | 3 | | | | 3 | 3 | | | | | 6318159G1 | Lower arc runner |
| 3 | 58 | | | 3 | 3 | 3 | 3 | 3 | | | 3 | 3 | 3 | | | 3 | 3 | 3 | 3 | 6412205G1 | Lower arc runner |
| 3 | 59 | 3 | 3 | | | | | | 3 | 3 | | | | 3 | 3 | | | | | 6440528 | Insulation |
| 3 | 59 | | | 3 | 3 | 3 | 3 | 3 | | | 3 | 3 | 3 | | | 3 | 3 | 3 | 3 | 6440976P1 | Insulation |
| 3 | 60 | 12 | 12 | 12 | 12 | 12 | 12 | 12 | 12 | 12 | 12 | 12 | 12 | 12 | 12 | 12 | 12 | 12 | 12 | 421711 | Molded cap |
| 3 | 61 | 12 | 12 | 12 | 12 | 12 | 12 | 12 | 12 | 12 | 12 | 12 | 12 | 12 | 12 | 12 | 12 | 12 | 12 | 407193 | Washer nut |
| 3 | 62 | 3 | 3 | | | | | | 3 | 3 | | | | 3 | 3 | | | | | 6229976G1 | Coil and terminal |
| 3 | 63 | | | 3 | 3 | 3 | 3 | 3 | | | 3 | 3 | 3 | | | 3 | 3 | 3 | 3 | 619C446G1 | Coil |
| 3 | 64 | 3 | 3 | | | | | | 3 | 3 | | | | 3 | 3 | | | | | 6193967G26 | Muffler assembly |
| 3 | 65 | 6 | 6 | | | | | | 6 | 6 | | | | 6 | 6 | | | | | 6105830P1 | Side plate |
| 3 | 66 | 6 | 6 | | | | | | 6 | 6 | | | | 6 | 6 | | | | | 6193967G25 | Filler for muffler |
| 3 | 67 | 3 | 3 | | | | | | 3 | 3 | | | | 3 | 3 | | | | | 6149517 | Divider |
| 3 | 68 | | | 3 | 3 | 3 | 3 | 3 | | | 3 | 3 | 3 | | | 3 | 3 | 3 | 3 | 6216613P516 | Spacer |
| 3 | 69 | 3 | 3 | | | | | | 3 | 3 | | | | 3 | 3 | | | | | 6440155 | Insulation |
| 3 | 69 | | | 3 | 3 | 3 | | | | | 3 | | | | | 3 | 3 | | | 6440977P1 | Insulation |
| 3 | 69 | | | | | 3 | 3 | | | | | 3 | 3 | | | | | 3 | 3 | 6440977P2 | Insulation |
| 3 | 70 | | | | | 6 | 6 | | | | | 6 | 6 | | | | | 6 | 6 | 6551057P2 | Spacer |
| 3 | 71 | | | | | 39 | 39 | | | | | 39 | 39 | | | | | 39 | 39 | 6551056P1 | Nut |
| 3 | 72 | | | | | 3 | 3 | | | | | 3 | 3 | | | | | 3 | 3 | 6551022P2 | Insulation (left) |
| 3 | 73 | | | | | 3 | 3 | | | | | 3 | 3 | | | | | 3 | 3 | 6551022P1 | Insulation (right) |
| 3 | 74 | | | | | 6 | 6 | | | | | 6 | 6 | | | | | 6 | 6 | 6551057P1 | Spacer |
| 3 | 75 | | | | | 6 | 6 | | | | | 6 | 6 | | | | | 6 | 6 | N402P11B | Spacer |

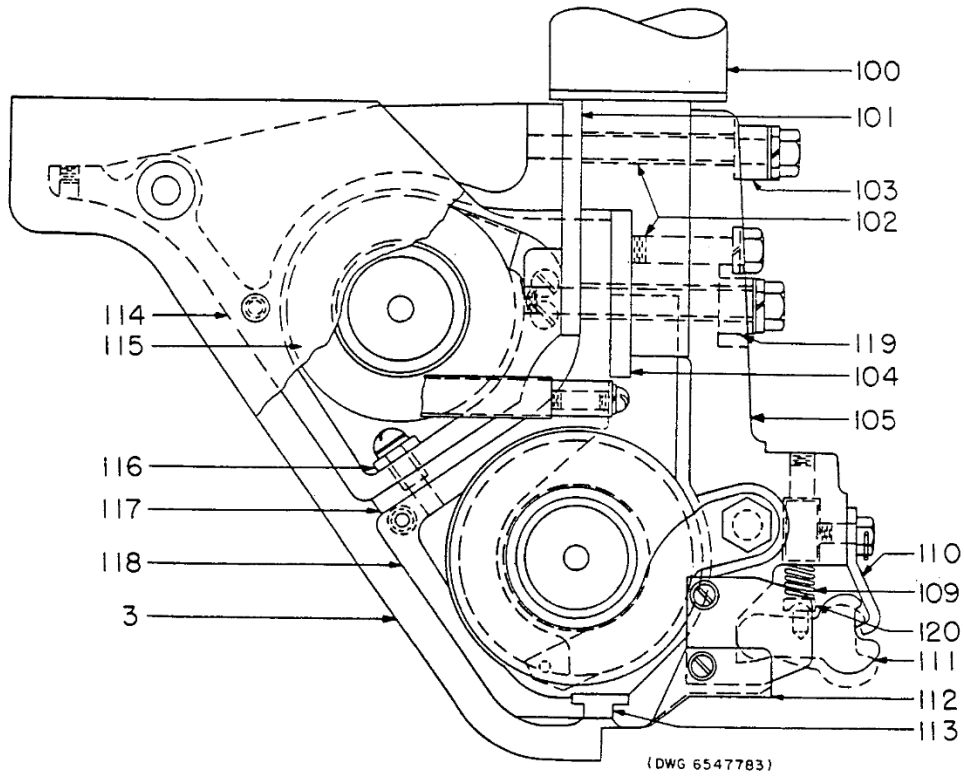
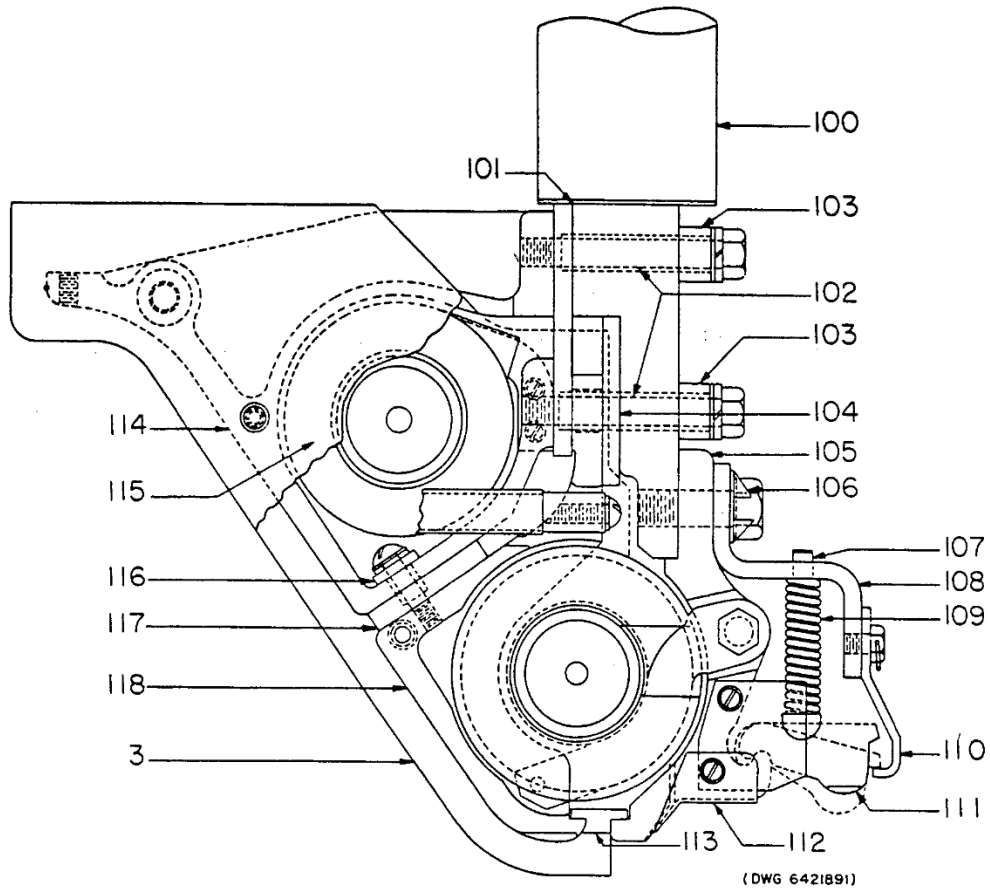


Fig. 4. Rear bushing and arc runner assembly

TYPE AM-5-150 MAGNE-BLAST CIRCUIT BREAKER

GEF-3486C

| Fig. No. | Ref. No. | Number Required for AM-5-150- | | | | | | | | | | | | | | | | | | Cat. No. | Description | |
|----------|----------|-------------------------------|----|----|----|----|----|-------------|----|----|----|----|-------------|----|----|----|----|----|----|----------|-------------|---|
| | | 600 ampere | | | | | | 1200 ampere | | | | | 2000 ampere | | | | | | | | | |
| | | 3 | 3Z | 4 | 4Z | 5 | 6 | 7 | 3 | 3Z | 4 | 5 | 6 | 7 | 3 | 3Y | 4 | 5 | 6 | | | 7 |
| 2 | 23 | 3 | | | | | | | | | | | | | | | | | | | 6193967G22 | Rear bushing and arc runner assembly |
| 2 | 23 | | 3 | | 3 | | | | | | | | | | | | | | | | 6316613G26 | Rear bushing and arc runner assembly |
| 2 | 23 | | | 3 | | | | | | | | | | | | | | | | | 6316606G22 | Rear bushing and arc runner assembly |
| 2 | 23 | | | | | 3 | | | | | | | | | | | | | | | 6316606G16 | Rear bushing and arc runner assembly |
| 2 | 23 | | | | | | | 3 | | | | | | | | | | | | | 6316613G20 | Rear bushing and arc runner assembly |
| 2 | 23 | | | | | | | | 3 | | | | | | | | | | | | 6193967G21 | Rear bushing and arc runner assembly |
| 2 | 23 | | | | | | | | | 3 | | | | | | | | | | | 6316613G21 | Rear bushing and arc runner assembly |
| 2 | 23 | | | | | | | | | | 3 | | | | | | | | | | 6316606G21 | Rear bushing and arc runner assembly |
| 2 | 23 | | | | | | 3 | | | | | 3 | | | | | | | | | 6316613G14 | Rear bushing and arc runner assembly |
| 2 | 23 | | | | | | | | | | | | | 3 | | | | | | | 6193967G31 | Rear bushing and arc runner assembly |
| 2 | 23 | | | | | | | | | | | | | | 3 | | | | 3 | | 6316613G22 | Rear bushing and arc runner assembly |
| 2 | 23 | | | | | | | | | | | | | | | 3 | | | | | 6316606G31 | Rear bushing and arc runner assembly |
| 2 | 23 | | | | | | | | | | | | | | | | 3 | 3 | | | 6316606G17 | Rear bushing and arc runner assembly |
| 4 | 100 | 3 | 3 | 3 | 3 | | | | | | | | | | | | | | | | 6420344G2 | Bushing, rear |
| 4 | 100 | | | | | 3 | 3 | 3 | | | | | | | | | | | | | 6420344G8 | Bushing, rear |
| 4 | 100 | | | | | | | | 3 | 3 | 3 | 3 | 3 | | | | | | | | 6420344G4 | Bushing, rear |
| 4 | 100 | | | | | | | | | | | | | | 3 | 3 | 3 | 3 | 3 | 3 | 6420344G6 | Bushing, rear |
| 4 | 101 | 3 | 3 | 3 | 3 | 3 | 3 | 3 | 3 | 3 | 3 | 3 | 3 | 3 | 3 | 3 | 3 | 3 | 3 | 3 | 6187411P7 | Insulation |
| 4 | 102 | 9 | | 9 | | 9 | 9 | | 9 | | 9 | 9 | | | 9 | | 9 | 9 | 9 | | 6440159 | Bushing |
| 4 | 102 | | 9 | | 9 | | 9 | | 9 | | 9 | | | 9 | | 9 | | | 9 | | 6316613P21 | Bushing |
| 4 | 103 | 9 | 6 | 9 | 6 | 9 | 9 | 6 | 9 | 6 | 9 | 9 | 6 | | | | | | | | 6370595P6 | Spacer for bushing |
| 4 | 103 | | | | | | | | | | | | | | 6 | 6 | 6 | 6 | 6 | 6 | 6370595P5 | Spacer for bushing |
| 4 | 103A | | 3 | | 3 | | | 3 | | 3 | | | | 3 | | | | | | | 6316613P22 | Spacer for bushing |
| 4 | 104 | 3 | | 3 | | 3 | 3 | | 3 | | 3 | 3 | | | 3 | | 3 | 3 | 3 | | 6187411P4 | Insulation |
| 4 | 104 | | 3 | | 3 | | | 3 | | 3 | | | | 3 | | | 3 | | | 3 | 6441975 | Insulation |
| 4 | 105 | 3 | | 3 | | 3 | 3 | | 3 | | 3 | 3 | | | | | | | | | 6318215P6 | Contact support |
| 4 | 105 | | 3 | | 3 | | | 3 | | 3 | | | | 3 | | | | | | | 6551072G1 | Contact support |
| 4 | 105 | | | | | | | | | | | | | | 3 | | 3 | | | | 6217066G4 | Contact support |
| 4 | 105 | | | | | | | | | | | | | | | 3 | | | | | 6217066G6 | Contact support |
| 4 | 105 | | | | | | | | | | | | | | | | | 3 | 3 | | 6217066G5 | Contact support |
| 4 | 106 | 3 | 3 | 3 | 3 | 3 | 3 | 3 | 3 | 3 | 3 | 3 | 3 | 3 | | | | | | | 6440519 | Locking plate |
| 4 | 107 | 12 | 12 | 12 | 12 | 12 | 12 | 12 | 12 | 12 | 12 | 12 | 12 | 12 | | | | | | | 6440517 | Spring guide |
| 4 | 108 | 3 | | 3 | | 3 | | | 3 | | 3 | | | | | | | | | | 6318217P2 | Support for spring |
| 4 | 108 | | 3 | | 3 | | | 3 | | 3 | | | | 3 | | | | | | | 6514168P1 | Support for spring |
| 4 | 108 | | | | | | 3 | | | | | | | 3 | | | | | | | 6318217P1 | Support for spring |
| 4 | 109 | 12 | 12 | 12 | 12 | 12 | | | 12 | 12 | 12 | | | | | | | | | | 6370616 | Spring |
| 4 | 109 | | | | | | 12 | 12 | | | | | | 12 | 12 | | | | | | 6509731 | Spring |
| 4 | 109 | | | | | | | | | | | | | | 21 | 21 | 21 | 21 | 21 | 21 | 6172977 | Spring |
| 4 | 110 | 3 | 3 | 3 | 3 | 3 | 3 | 3 | 3 | 3 | 3 | 3 | 3 | 3 | | | | | | | 6440518 | Retainer |
| 4 | 110 | | | | | | | | | | | | | | 3 | | | | | | 6440994 | Retainer |
| 4 | 110 | | | | | | | | | | | | | | | 3 | | 3 | 3 | 3 | 6508104P1 | Retainer |
| 4 | 110 | | | | | | | | | | | | | | | | | 3 | | | 6243070 | Retainer |
| 4 | 111 | 12 | 12 | 12 | 12 | 12 | 12 | 12 | 12 | 12 | 12 | 12 | 12 | 12 | | | | | | | 6476798G1 | Stationary primary contact |
| 4 | 111 | | | | | | | | | | | | | | 21 | 21 | 21 | 21 | 21 | 21 | 6477100G1 | Stationary primary contact |
| 4 | 112 | 3 | | 3 | | 3 | 3 | | 3 | | 3 | 3 | | | | | | | | | 6300108P1 | Shield |
| 4 | 112 | | 3 | | 3 | | | 3 | | 3 | | | | 3 | | | | | | | 6441944 | Shield |
| 4 | 112 | | | | | | | | | | | | | | 3 | | | | | | 6441104 | Shield |
| 4 | 112 | | | | | | | | | | | | | | | 3 | | | | 3 | 6441943 | Shield |
| 4 | 112 | | | | | | | | | | | | | | | | 3 | 3 | 3 | | 6300107P1 | Shield |
| 4 | 113 | 3 | | 3 | | 3 | | | 3 | | 3 | | | | 3 | | 3 | 3 | | | 6187411P5 | Insulation |
| 4 | 113 | | 3 | | 3 | | | 3 | | 3 | | | | 3 | | 3 | | | | 3 | 6551070P3 | Insulation |
| 4 | 113 | | | | | | 3 | | | | | 3 | | | | | | | 3 | | 6551064P1 | Insulation |
| 4 | 114 | 3 | 3 | 3 | 3 | 3 | 3 | 3 | 3 | 3 | 3 | 3 | 3 | 3 | 3 | 3 | 3 | 3 | 3 | 3 | 6187400P4 | Arc runner, upper |
| 4 | 115 | 3 | | 3 | | 3 | 3 | | 3 | | 3 | 3 | | | 3 | | 3 | 3 | 3 | | 6113702G2 | Coil, upper |
| 4 | 115 | | 3 | | 3 | | | 3 | | 3 | | | | 3 | | 3 | | | | 3 | 6547740G1 | Coil, upper |
| 4 | 116 | 6 | 6 | 6 | 6 | 6 | 6 | 6 | 6 | 6 | 6 | 6 | 6 | 6 | 6 | 6 | 6 | 6 | 6 | 6 | 6148748 | Bushing |
| 4 | 117 | | | | | | | | | | | | | | | 3 | 3 | 3 | 3 | | 6551052P1 | Insulation |
| 4 | 117 | 3 | 3 | 3 | 3 | 3 | 3 | 3 | 3 | 3 | 3 | 3 | 3 | 3 | | | | | 3 | 3 | 6551052P1 | Insulation |
| 4 | 118 | | 3 | | 3 | | | 3 | | 3 | | | | 3 | | | 3 | 3 | 3 | | 6229975G3 | Stationary arcing contact, arc runner, and coil |
| 4 | 118 | | 3 | | 3 | | | 3 | | 3 | | | | 3 | | | | | | 3 | 6547728G1 | Stationary arcing contact, arc runner, and coil |
| 4 | 119 | | | | | | | | | | | | | | 3 | 3 | 3 | 3 | 3 | 3 | 6370595P4 | Spacer for bushing |
| 4 | 120 | | | | | | | | | | | | | | 21 | 21 | 21 | 21 | 21 | 21 | 6243072 | Insulation |

TYPE AM-3-150 MAGNE-BLAST CIRCUIT BREAKER

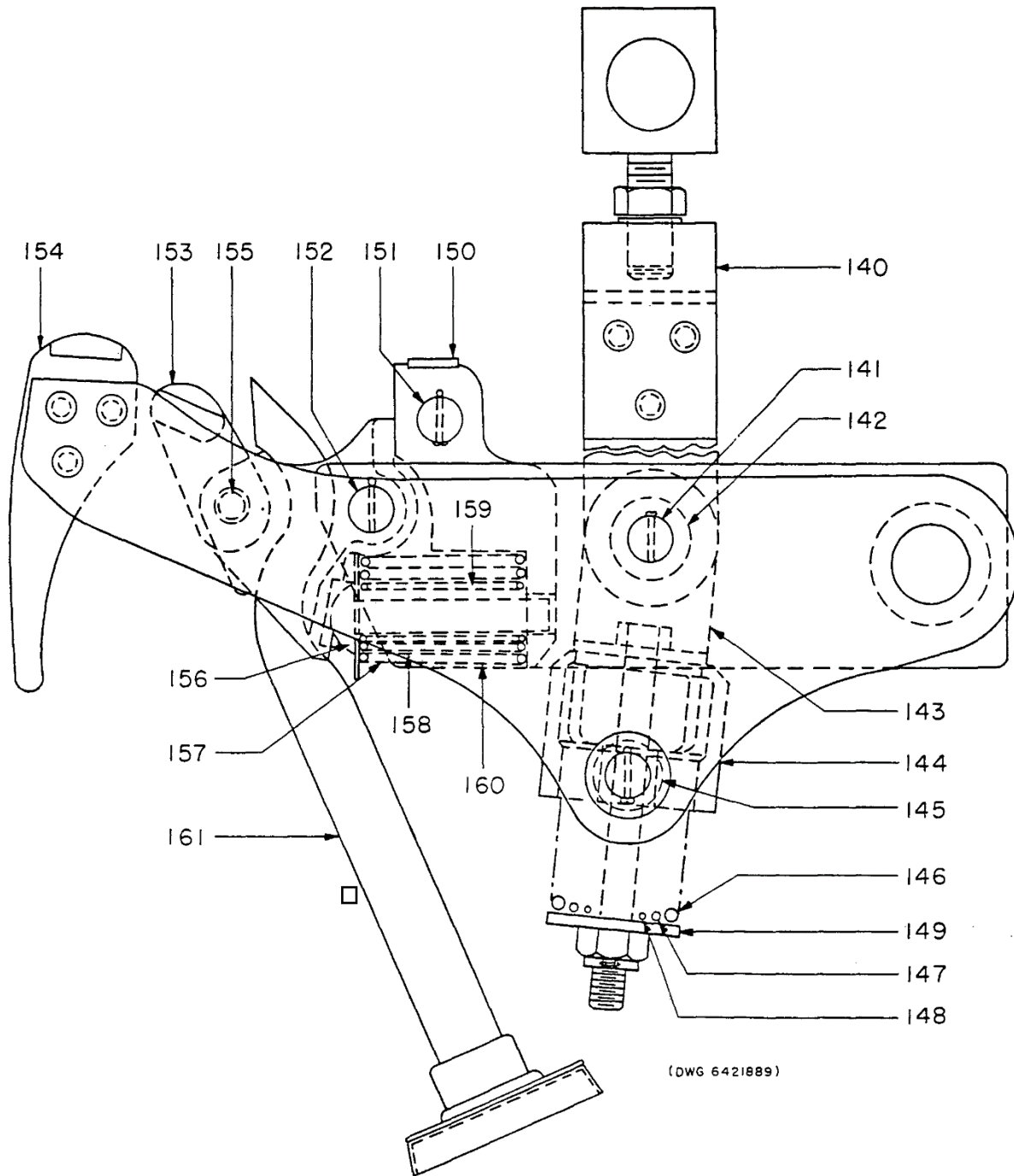


Fig. 5. Contact arm assembly

TYPE AM-5-150 MAGNE-BLAST CIRCUIT BREAKER

GEF-3486C

| Fig. Ref. No. No. | Number Required for AM-5-150- | | | | | | | | | | | | | | | | | | | Cat. No. | Description |
|----------------------|-------------------------------|----|---|----|---|---|---|-------------|----|---|---|---|-------------|----|---|---|---|---|-------------|-------------------------------|-------------|
| | 600 ampere | | | | | | | 1200 ampere | | | | | 2000 ampere | | | | | | | | |
| | 3 | 3Z | 4 | 4Z | 5 | 6 | 7 | 3 | 3Z | 4 | 5 | 7 | 3 | 3Y | 4 | 5 | 6 | 7 | | | |
| 2 19 | 3 | 3 | | | | | | 3 | 3 | | | | | | | | | | 6193967G34 | Contact arm assembly | |
| 2 19 | | | 3 | 3 | 3 | 3 | 3 | | | 3 | 3 | 3 | | | | | | | 6316606G34 | Contact arm assembly | |
| 2 19 | | | | | | | | | | | | | 3 | 3 | | | | | 6193967G27 | Contact arm assembly | |
| 2 19 | | | | | | | | | | | | | | | 3 | 3 | 3 | 3 | 6316606G27 | Contact arm assembly | |
| 5 140 | 3 | 3 | | | | | | 3 | 3 | | | | 3 | 3 | | | | | 6193967G24 | Operating rod and coupling | |
| 5 140 | | | 3 | 3 | 3 | 3 | 3 | | | 3 | 3 | 3 | | | 3 | 3 | 3 | 3 | 6316606G24 | Operating rod and coupling | |
| 5 141 | 3 | 3 | 3 | 3 | 3 | 3 | 3 | 3 | 3 | 3 | 3 | 3 | | | | | | | 6247781 | Pin | |
| 5 141 | | | | | | | | | | | | | 3 | 3 | 3 | 3 | 3 | 3 | 6245820 | Pin | |
| 5 142 | | | | | | | | | | | | | 6 | 6 | 6 | 6 | 6 | 6 | 6440197 | Bushing | |
| 5 143 | 3 | 3 | 3 | 3 | 3 | 3 | 3 | 3 | 3 | 3 | 3 | 3 | 3 | 3 | 3 | 3 | 3 | 3 | 6247776P1 | Clevis | |
| 5 144 | 3 | 3 | 3 | 3 | 3 | 3 | 3 | 3 | 3 | 3 | 3 | 3 | | | | | | | 6318226P1 | Trunnion and spring container | |
| 5 144 | | | | | | | | | | | | | 3 | 3 | 3 | 3 | 3 | 3 | 6318226P2 | Trunnion and spring container | |
| 5 145 | 6 | 6 | 6 | 6 | 6 | 6 | 6 | 6 | 6 | 6 | 6 | 6 | | | | | | | 6242806P1 | Bushing | |
| 5 145 | | | | | | | | | | | | | 6 | 6 | 6 | 6 | 6 | 6 | 6242806P2 | Bushing | |
| 5 146 | 3 | 3 | 3 | 3 | 3 | 3 | 3 | 3 | 3 | 3 | 3 | 3 | 3 | 3 | 3 | 3 | 3 | 3 | 6172873 | Outer spring | |
| 5 147 | 3 | 3 | 3 | 3 | 3 | 3 | 3 | 3 | 3 | 3 | 3 | 3 | 3 | 3 | 3 | 3 | 3 | 3 | 6172874 | Intermediate spring | |
| 5 148 | 3 | 3 | 3 | 3 | 3 | 3 | 3 | 3 | 3 | 3 | 3 | 3 | 3 | 3 | 3 | 3 | 3 | 3 | 6172875 | Inner spring | |
| 5 149 | 3 | 3 | 3 | 3 | 3 | 3 | 3 | 3 | 3 | 3 | 3 | 3 | 3 | 3 | 3 | 3 | 3 | 3 | 6247777 | Washer | |
| 5 150 | 3 | 3 | 3 | 3 | 3 | 3 | 3 | 3 | 3 | 3 | 3 | 3 | | | | | | | 6217063G8 | Contact arm | |
| 5 150 | | | | | | | | | | | | | 3 | 3 | 3 | 3 | | | 6420220G4 | Contact arm | |
| 5 150 | | | | | | | | | | | | | | | | | 3 | 3 | 6420220G8 | Contact arm | |
| 5 151 | | | | | | | | | | | | | 3 | 3 | 3 | 3 | 3 | 3 | 6076405P560 | Pin | |
| 5 152 | 3 | 3 | 3 | 3 | 3 | 3 | 3 | 3 | 3 | 3 | 3 | 3 | | | | | | | 6247780 | Pin | |
| 5 152 | | | | | | | | | | | | | 3 | 3 | 3 | 3 | 3 | 3 | 6440108 | Pin | |
| 5 153 | 3 | 3 | 3 | 3 | 3 | | | 3 | 3 | 3 | | | | | | | | | 6275256G1 | Movable intermediate contact | |
| 5 153 | | | | | | 3 | 3 | | | | 3 | 3 | | | | | | | 6275256G1 | Movable intermediate contact | |
| 5 153 | | | | | | | | | | | | | 3 | 3 | 3 | 3 | 3 | 3 | 6420221G2 | Movable intermediate contact | |
| 5 154 | 3 | 3 | 3 | 3 | 3 | 3 | 3 | 3 | 3 | 3 | 3 | 3 | | | | | | | 6420271G1 | Movable arcing contact | |
| 5 154 | | | | | | | | | | | | | 3 | 3 | 3 | 3 | 3 | 3 | 6420272G1 | Movable arcing contact | |
| 5 155 | 3 | 3 | 3 | 3 | 3 | 3 | 3 | 3 | 3 | 3 | 3 | 3 | | | | | | | 6245402P1 | Pin | |
| 5 155 | | | | | | | | | | | | | 3 | 3 | 3 | 3 | 3 | 3 | 6440115 | Pin | |
| 5 156 | 3 | 3 | 3 | 3 | 3 | 3 | 3 | 3 | 3 | 3 | 3 | 3 | | | | | | | 6149985 | Spring guide | |
| 5 156 | | | | | | | | | | | | | 3 | 3 | 3 | 3 | 3 | 3 | 6440172 | Spring guide | |
| 5 157 | 3 | 3 | 3 | 3 | 3 | 3 | 3 | 3 | 3 | 3 | 3 | 3 | 3 | 3 | 3 | 3 | 3 | 3 | 6509745 | Spring, outer | |
| 5 158 | 3 | 3 | 3 | 3 | 3 | 3 | 3 | 3 | 3 | 3 | 3 | 3 | 3 | 3 | 3 | 3 | 3 | 3 | 6509746 | Spring, intermediate | |
| 5 159 | 3 | 3 | 3 | 3 | 3 | 3 | 3 | 3 | 3 | 3 | 3 | 3 | 3 | 3 | 3 | 3 | 3 | 3 | 6509747 | Spring, inner | |
| 5 160 | 3 | 3 | 3 | 3 | 3 | | | 3 | 3 | 3 | | | | | | | | | 6149967P2 | Insulation cup | |
| 5 160 | | | | | | 3 | 3 | | | | | | 3 | 3 | | | | | 6149967P2 | Insulation cup | |
| 5 161 | 3 | 3 | | | | | | 3 | 3 | | | | | 3 | | | | | 6193967G23 | Tube and piston assembly | |
| 5 161 | | | 3 | 3 | 3 | 3 | 3 | | | 3 | 3 | 3 | | | 3 | 3 | 3 | 3 | 6316606G23 | Tube and piston assembly | |

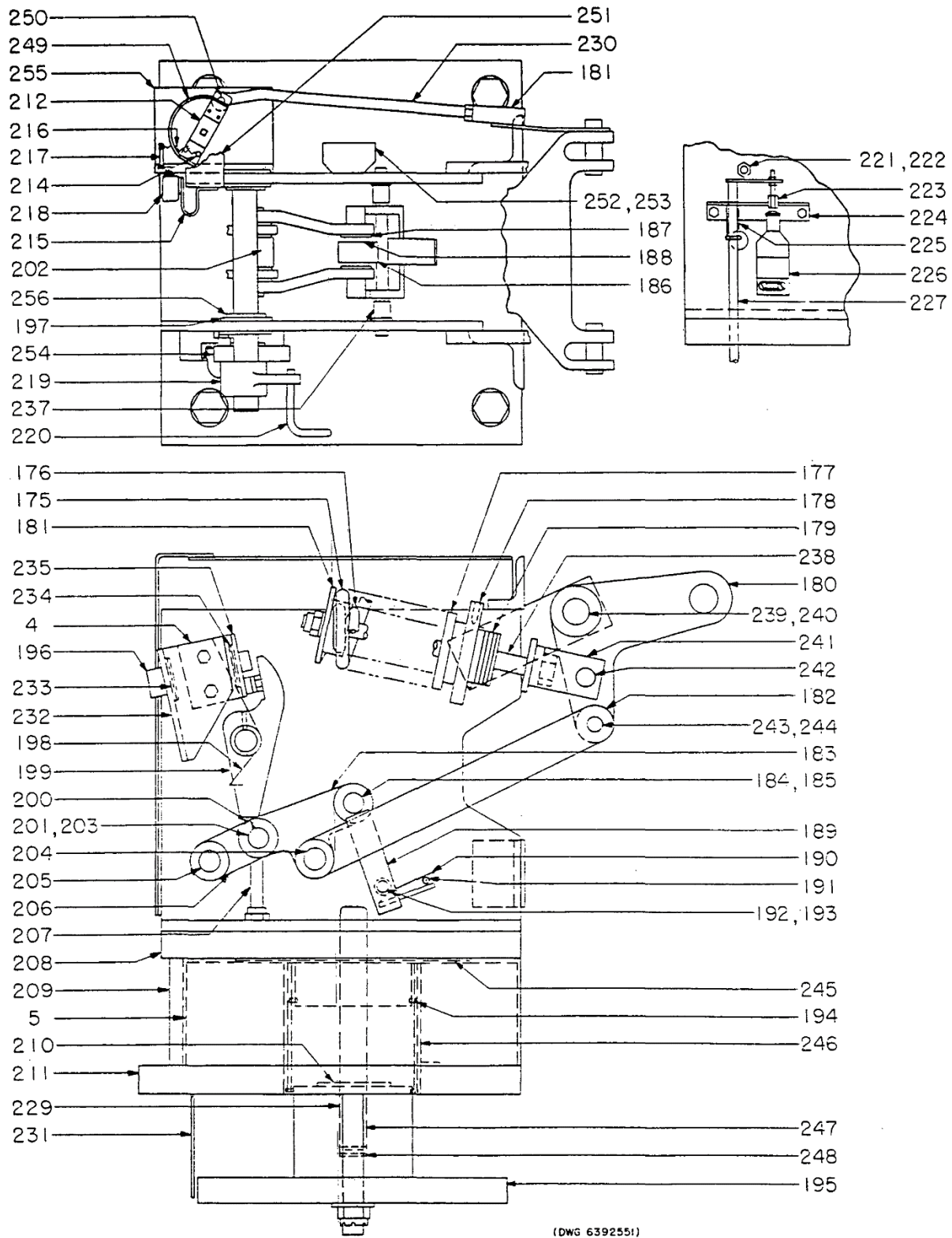


Fig. 6. Type MS solenoid mechanism

TYPE AM-5-150 MAGNE-BLAST CIRCUIT BREAKER

GEF-3486C

| Fig. No. | Ref. No. | Number Required for MS- | | | | | | Cat. No. | Description |
|--|----------|-------------------------|-----|-----|-------|------|------|--------------|---|
| | | 10 | 10A | 10B | 10B-1 | 10BY | 10BZ | | |
| PARTS RECOMMENDED FOR NORMAL MAINTENANCE | | | | | | | | | |
| 2 | 4 | 1 | 1 | 1 | 1 | 1 | 1 | 6275070G1 | Trip coil, 24-volt, d-c |
| 2 | 4 | 1 | 1 | 1 | 1 | 1 | 1 | 6275070G2 | Trip coil, 48-volt, d-c |
| 2 | 4 | 1 | 1 | 1 | 1 | 1 | 1 | 6174582G1 | Trip coil, 125-volt, d-c |
| 2 | 4 | 1 | 1 | 1 | 1 | 1 | 1 | 6174582G2 | Trip coil, 250-volt, d-c |
| 2 | 4 | 1 | 1 | 1 | 1 | 1 | 1 | 6275070G1 | Trip coil, 115-volt, a-c |
| 2 | 4 | 1 | 1 | 1 | 1 | 1 | 1 | 6174582G14 | Trip coil, 230-volt, a-c |
| 2 | 5 | 1 | 1 | 1 | 1 | 1 | 1 | 6306764G3 | Closing coil, 125-volt, d-c |
| 2 | 5 | 1 | 1 | 1 | 1 | 1 | 1 | 6306764G4 | Closing coil, 250-volt, d-c |
| PARTS SELDOM REQUIRED | | | | | | | | | |
| 6 | 175 | 1 | 1 | | 1 | 1 | 1 | 6301377 | Outer spring |
| 6 | 175 | | | 1 | | | | 6301376 | Outer spring |
| 6 | 176 | 1 | 1 | | 1 | 1 | 1 | 6370617 | Inner spring |
| 6 | 177 | 1 | | | | | | 6370580P1 | Guide for spring |
| 6 | 177 | | 1 | 1 | 1 | 1 | 1 | 6476714P1 | Guide for spring |
| 6 | 178 | 2 | 2 | 2 | 2 | 2 | 2 | 6193968P42 | Set screw, hollow hd, cup pt., 1/4 in.-20, 1/4 in. |
| 6 | 179 | 6 | 6 | 6 | 6 | 6 | 6 | 6370572P4 | Buffer washer |
| 6 | 180 | 1 | | | | | | 6193968G40 | Crank assembly |
| 6 | 180 | | 1 | 1 | 1 | 1 | 1 | 6193968G36 | Crank assembly |
| 6 | 181 | 1 | 1 | 1 | 1 | 1 | 1 | 6371478G1 | Coupling |
| 6 | 182 | 1 | 1 | 1 | 1 | 1 | 1 | 6420224P1 | Link |
| 6 | 183 | 1 | 1 | 1 | 1 | 1 | 1 | 6318160P1 | Link |
| 6 | 184 | 1 | 1 | 1 | 1 | 1 | 1 | 6371491P12 | Pin |
| 6 | 185 | 2 | 2 | 2 | 2 | 2 | 2 | 6193968P125 | Retaining ring |
| 6 | 186 | 1 | 1 | 1 | 1 | 1 | 1 | 6477418BAP15 | Needle bearing |
| 6 | 187 | 15 | 15 | 15 | 15 | 15 | 15 | 414A105P2 | Washer |
| 6 | 188 | 2 | 2 | 2 | 2 | 2 | 2 | 6002721P391 | Spacer |
| 6 | 189 | 1 | 1 | 1 | 1 | 1 | 1 | 6370577G1 | Prop |
| 6 | 190 | 1 | 1 | 1 | 1 | 1 | 1 | 6301380 | Spring |
| 6 | 191 | 1 | 1 | 1 | 1 | 1 | 1 | 6440990 | Pin |
| 6 | 192 | 1 | 1 | 1 | 1 | 1 | 1 | 6440987 | Pin |
| 6 | 193 | 2 | 2 | 2 | 2 | 2 | 2 | 6008491P10 | Washer |
| 6 | 194 | | | 2 | 2 | 2 | 2 | 6476710P1 | Piston ring |
| 6 | 195 | 1 | 1 | | | | | 6370589G1 | Armature and plate |
| 6 | 195 | | | 1 | 1 | 1 | 1 | 6476712G1 | Armature and plate |
| 6 | 196 | 1 | 1 | 1 | 1 | 1 | 1 | 6508713G2 | Armature and plunger assembly |
| 6 | 197 | 2 | | | | 2 | | 6477418AAP5 | Ball bearing |
| 6 | 197 | | | 2 | 2 | | 2 | 103A2101P1 | Ball bearing |
| 6 | 198 | 1 | | 1 | 1 | 1 | 1 | 6172825P1 | Spring |
| 6 | 199 | 1 | | 1 | 1 | 1 | 1 | 6193968G38 | Latch assembly |
| 6 | 200 | 2 | | 2 | 2 | 2 | 2 | 6193968P102 | Set screw, 8-36, 1/4 in., headless, cone pt, stl |
| 6 | 201 | 1 | | 1 | 1 | 1 | 1 | 6441148 | Pin |
| 6 | 202 | 1 | | 1 | 1 | 1 | 1 | 6477418BAP10 | Needle bearing |
| 6 | 203 | 2 | | 2 | 2 | 2 | 2 | 6177015P12 | Washer |
| 6 | 204 | 2 | | 2 | 2 | 2 | 2 | 6440148 | Pin |
| 6 | 205 | 1 | | 1 | 1 | 1 | 1 | 6440154 | Pin |
| 6 | 206 | 1 | | 1 | 1 | 1 | 1 | 6370579G1 | Yoke |
| 6 | 207 | 1 | | 1 | 1 | 1 | 1 | 6440137 | Stud |
| 6 | 208 | 1 | | | | | | 6370586G1 | Plate and pole piece |
| 6 | 208 | | | 1 | 1 | 1 | 1 | 6476700G2 | Plate and pole piece |
| 6 | 209 | 1 | | 1 | 1 | 1 | 1 | 6370581P1 | Pot |
| 6 | 210 | 1 | | 1 | 1 | 1 | 1 | 6300924P13 | Washer |
| 6 | 211 | 1 | | 1 | 1 | 1 | 1 | 6370582P1 | Bottom plate |
| 6 | 212 | 1 | | 1 | | 1 | 1 | 6117501G3 | Support |
| 6 | 213 | 1 | | 1 | | 1 | 1 | 6318131P2 | Crank |
| 6 | 213 | | | | 1 | | | 6508728P1 | Crank |

| Fig. No. | Ref. No. | Number Required for MS- | | | | | | Cat. No. | Description |
|----------|----------|-------------------------|-----|-----|-------|------|------|-------------|-----------------------------|
| | | 10 | 10A | 10B | 10B-1 | 10BY | 10BZ | | |
| 6 | 214 | 1 | | 1 | | 1 | 1 | 6147122 | Pin |
| 6 | 214 | | | | 1 | | | 6442807 | Pin |
| 6 | 215 | 1 | | 1 | 1 | 1 | 1 | 6243920 | Support |
| 6 | 216 | 1 | | 1 | 1 | 1 | 1 | 6176838 | Spring |
| 6 | 217 | 1 | | 1 | 1 | 1 | 1 | 6245825 | Pin |
| 6 | 218 | 1 | | 1 | 1 | 1 | 1 | 6192382P5 | Operation counter |
| 6 | 219 | 1 | | 1 | 1 | 1 | 1 | 6117509P1 | Crank |
| 6 | 220 | 1 | | 1 | 1 | 1 | 1 | 6243020P2 | Trip rod |
| 6 | 221 | 1 | | 1 | 1 | 1 | 1 | 6440905 | Buffer |
| 6 | 222 | 1 | | 1 | 1 | 1 | 1 | 6440938 | Stop stud |
| 6 | 223 | 1 | | 1 | 1 | 1 | 1 | 6440904 | Adjusting stud |
| 6 | 224 | 1 | | 1 | 1 | 1 | 1 | 6370592P1 | Bracket |
| 6 | 225 | 1 | | 1 | 1 | 1 | 1 | 6370610 | Spring |
| 6 | 226 | 1 | | 1 | 1 | 1 | 1 | 6412114P2 | Cut-off switch |
| 6 | 227 | 1 | | 1 | 1 | 1 | 1 | 6476341G1 | Operating rod |
| 6 | 228 | 1 | | 1 | | 1 | 1 | 6305650G2 | Auxiliary switch |
| 6 | 228 | | | | 1 | | | 6577001G1 | Auxiliary switch |
| 6 | 229 | 1 | | | | | | 6440143P1 | Stud |
| 6 | 229 | | 1 | 1 | 1 | 1 | 1 | 6440143P2 | Stud |
| 6 | 230 | 1 | 1 | 1 | 1 | 1 | 1 | 6551045P2 | Eye bolt |
| 6 | 231 | 1 | 1 | 1 | 1 | 1 | 1 | 6318278P1 | Cover |
| 6 | 232 | 1 | 1 | 1 | 1 | 1 | 1 | 6055108 | Support |
| 6 | 233 | 1 | 1 | 1 | 1 | 1 | 1 | 414A109P3 | Washer |
| 6 | 234 | 2 | 2 | 2 | 2 | 2 | 2 | 414A109P5 | Washer |
| 6 | 235 | 1 | 1 | 1 | 1 | 1 | 1 | 6055109 | Support |
| 6 | 236 | 2 | 2 | 2 | 2 | 2 | 2 | 6370572P2 | Washer |
| 6 | 237 | 2 | 2 | 2 | 2 | 2 | 2 | 6076413P279 | Spacer |
| 6 | 238 | 1 | 1 | 1 | 1 | 1 | 1 | 6300046P13 | Bolt |
| 6 | 239 | 1 | 1 | 1 | 1 | 1 | 1 | 6076409P188 | Pin |
| 6 | 240 | 8 | 8 | 8 | 8 | 8 | 8 | 6008491P2 | Washer |
| 6 | 241 | 1 | 1 | 1 | 1 | 1 | 1 | 6440134 | Yoke |
| 6 | 242 | 1 | 1 | 1 | 1 | 1 | 1 | 6076407P180 | Pin |
| 6 | 243 | 1 | 1 | 1 | 1 | 1 | 1 | 6076406P118 | Pin |
| 6 | 244 | 4 | 4 | 4 | 4 | 4 | 4 | 6008491P3 | Washer |
| 6 | 245 | 4 | 4 | 4 | 4 | 4 | 4 | 6046816P1 | Shim |
| 6 | 246 | | 1 | 1 | 1 | 1 | 1 | 6440951 | Tube |
| 6 | 247 | 1 | | | | | | 6370590P1 | Plunger |
| 6 | 247 | | 1 | 1 | 1 | 1 | 1 | 6370590P3 | Plunger |
| 6 | 248 | 8 | 8 | 8 | 8 | 8 | 8 | 6370572P2 | Washer |
| 6 | 249 | 1 | 1 | 1 | | 1 | 1 | ----- | Semaphore |
| 6 | 249 | | | | 1 | | | 6557052G1 | Semaphore and bracket |
| 6 | 250 | 1 | 1 | 1 | 1 | 1 | 1 | 6056154 | Pin |
| 6 | 251 | 1 | 1 | 1 | 1 | 1 | 1 | 6440147 | Cover for semaphore |
| 6 | 252 | 1 | 1 | 1 | 1 | 1 | 1 | 6551084G1 | Terminal board and hardware |
| 6 | 253 | 1 | 1 | 1 | 1 | 1 | 1 | 6157223P2 | Marking strip |
| 6 | 254 | 1 | 1 | 1 | 1 | 1 | 1 | 6146194P2 | Pin |
| 6 | 255 | | | | 1 | | | 6508688P1 | Bracket |
| 6 | 256 | 8 | 8 | 8 | 8 | 8 | 8 | 490072 | Washer |

TYPE AM-5-150 MAGNE-BLAST CIRCUIT BREAKER

GEF-3486C

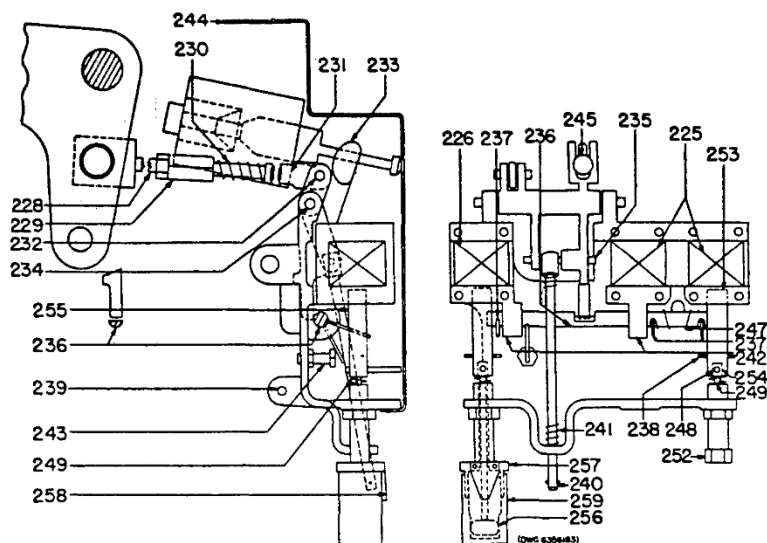


Fig. 7. Current trip mechanism for solenoid mechanism

| Fig. No. | Ref. No. | Cat. No. | No. Required | Description |
|---|----------|-------------|--------------|--|
| PARTS RECOMMENDED FOR NORMAL MAINTENANCE | | | | |
| 7 | 225 | 6174599G2 | 3 | Trip coil, 3 amp for instantaneous only |
| 7 | 226 | 22D3G226 | 3 | Trip coil, 5 amp |
| 7 | 227 | 6174599G6 | 1 | Trip coil, capacitor trip for instantaneous only |
| PARTS SELDOM REQUIRED | | | | |
| 7 | 228 | 6371498G1 | 1 | Connecting rod |
| 7 | 229 | 6476300G1 | 1 | Adjusting rod and coupling |
| 7 | 230 | 6074238 | 1 | Spring |
| 7 | 231 | 6371499P1 | 1 | Guide |
| 7 | 232 | 6076402P3 | 1 | Pin |
| 7 | 233 | 6318259G1 | 1 | Trip lever |
| 7 | 234 | 6076402P49 | 1 | Pin |
| 7 | 235 | 6076401P17 | 1 | Pin |
| 7 | 236 | 6440860 | 1 | Shaft |
| 7 | 237 | 6193957P209 | 5 | Dowel pin for spring |
| 7 | 238 | 6193957P34 | † | Groov-pin |
| 7 | 239 | 6076402P72 | 1 | Pin |
| 7 | 240 | 6440885 | 1 | Guide for spring |
| 7 | 241 | 6370644 | 1 | Spring |
| 7 | 242 | 6193957P203 | 2 | Needle bearing for trip shaft |
| 7 | 243 | 6176575P3 | 1 | Stop |
| 7 | 244 | 6318258P1 | 1 | Cover |
| 7 | 245 | 6440865 | 1 | Plunger |
| 7 | 246 | 6074557P3 | † | Guide for armature |
| 7 | 247 | 6370645 | 1 | Torsion spring |
| 7 | 248 | 6247927 | † | Pin |
| 7 | 249 | 6477094 | † | Spring |
| 7 | 250 | 6247919 | 3 | Calibrating spring |
| 7 | 251 | 6247927 | † | Pin |
| 7 | 252 | 6247924 | † | Calibrating tube for instantaneous only |
| 7 | 253 | 6247926 | † | Armature for instantaneous only |
| 7 | 254 | 6247925 | † | Guide pin |
| 7 | 255 | 6247923 | † | Armature for time delay only |
| 7 | 256 | 6301295G1 | † | Piston for time delay only |
| 7 | 257 | 6370204P1 | † | Body for time delay only |
| 7 | 258 | 6048813 | † | Spring for time delay only |
| 7 | 259 | 6247920 | † | Well for time delay only |

† Two for each trip coil furnished

† One for each trip coil furnished



ABB Inc.

Electrification Services
305 Gregson Dr.
Cary, NC 27511 USA

For further information, please visit:
www.electrification.us.abb.com/services

For service, call:
1-888-434-7378 (US)
1-540-387-8617 (International)

The information contained in this document is for general information purposes only. While ABB strives to keep the information up to date and correct, it makes no representations or warranties of any kind, express or im-plied, about the completeness, accuracy, reliability, suitability or availability with respect to the information, products, services, or related graphics contained in the document for any purpose. Any reliance placed on such information is therefore strictly at your own risk. ABB reserves the right to discontinue any product or service at any time.

© Copyright 2023 ABB. All rights reserved.