

14

13

12

11

D

D

C

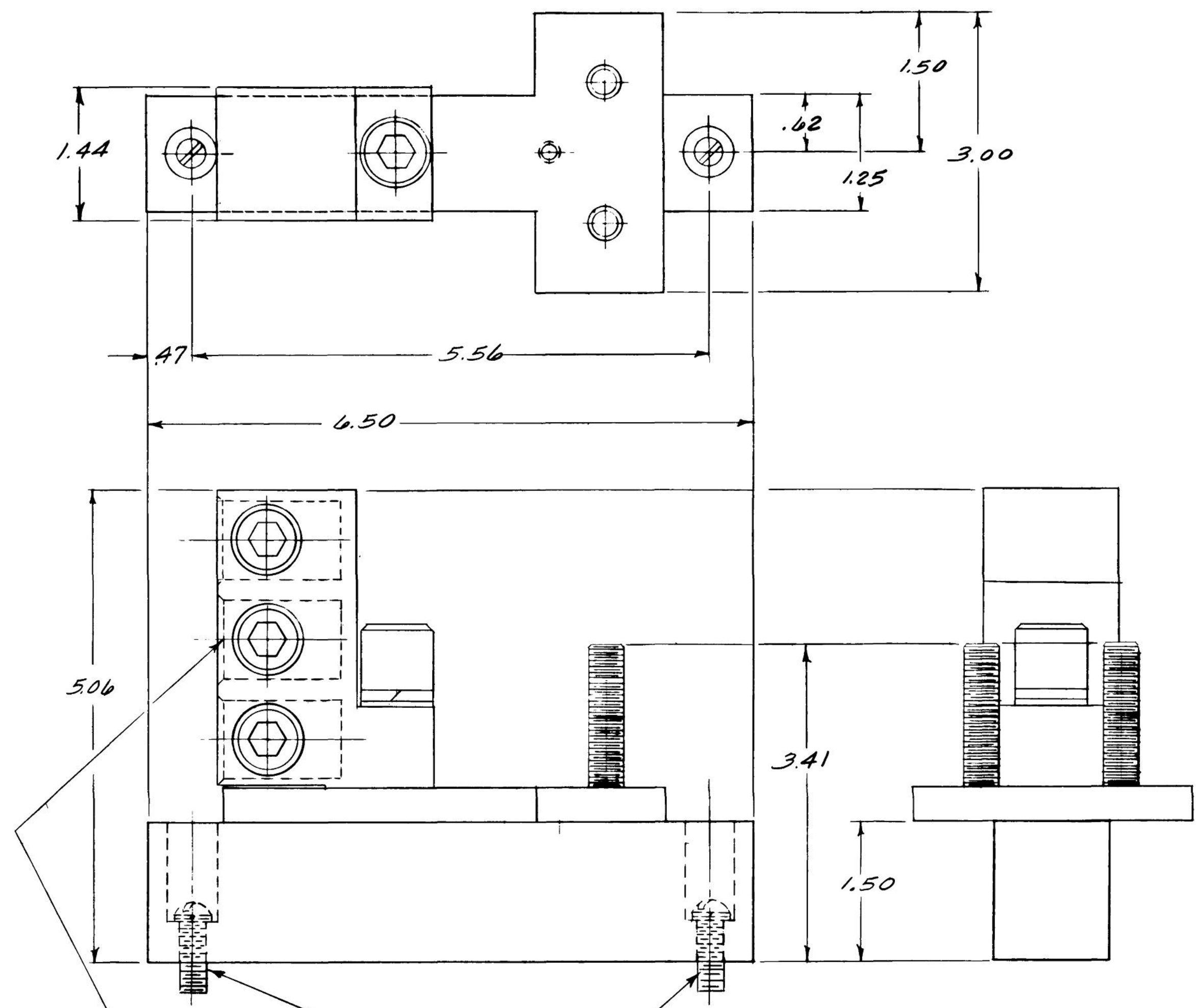
C

B

B

A

A



(3) .84 HOLES 1.34 DEEP  
 WIRE SIZE (3) 250-350 MCM CU  
 (3) 250-500 MCM AL

MOUNTING HARDWARE  
 (2) #12-24 X .75 LG SCREWS  
 (2) #12 LOCK WASHERS  
 (2) #12 FLAT WASHERS

	<b>Industrial Solutions</b> by ABB			
	<b>OUTLINE NEUTRAL</b> <b>FIRST MADE FOR TNIA800G MOD 8</b>			
THIRD ANGLE 	SHEET 1 1 of 1	DWG NO. <b>139C5488SH1</b>	DATE <b>05/20</b>	REV <b>4</b>

14

13

12

11