

Variable Area Flowmeters Acrylic VA Flowmeter Series FP

- Easy to read English or Metric Scales
- Water ranges from 4CCM to 20GPM
- Air ranges from 50 CCM to 4000 LPM
- Threaded brass inserts for quick installations
- Easy disassembly and assembly for maintenance
- Durable one-piece clear acrylic construction
- Stable, easy to read float



Acrylic VA Flowmeter
Series FP

ACRYLIC VA METER

The Series FP - Acrylic Variable Area Flowmeters are an excellent low-cost alternative for a wide variety of liquid and gas measurements. The clear acrylic body features an easy to read scale, brass, stainless steel or PVC NPT connections and optional built-in control valves. The rugged acrylic construction makes the Series FP virtually unbreakable in most industrial process applications. These flowmeters can be used with any liquid or gas chemically compatible with the component materials and within the temperature and pressure limitations.

Engineering Specifications

Accuracy:

- Model FP2000 ±5% full scale
- Model FP4000 & FP4500 ±3% full scale
- Model FP5000 ±2% full scale

Maximum Pressure: 100 psig (6.9 barg)

Maximum Temperature: 150°F (65°C)

Body Material: Clear acrylic

Float Materials: Black Glass & Stainless Steel for FP2000, FP4000 & FP4500 Series; Stainless Steel for FP5000 Series

Seals: Buna N o-rings with brass or PVC fittings
Viton o-rings with stainless fittings

Fittings: Brass or stainless steel NPT female connections with FP2000, FP4000 & FP4500 Series. PVC NPT connections with FP5000 Series.

Valves: Brass or stainless steel cartridge type optionally available on FP2000, FP4000 & FP4500 Series. Plastic type valve available with FP5000 Series for external mounting.

NOTE: All valves only available on inlet.

Scales: All scales are direct reading as shown in the capacity tables.

Millimeter and percent scales are optionally available by special order.

Scales are only available for water (s. g. = 1) or air @ STP conditions.

Scales for other fluids and conditions are available as special order and require meter calibration

CAPACITY CODES

SERIES FP2000 FLOW RATES			
TABLE A**			
RANGE	MODEL	RANGE	MODEL
SCFH OF AIR	CODE	LPM OF AIR	CODE
0.1 – 1	2A00	0.04 – 0.5	2A12
0.2 – 2	2A01	0.1 – 1	2A13
0.4 – 5	2A02	0.2 – 2.5	2A29
1 – 10	2A03	0.4 – 5	2A14
2 – 20	2A04	1 – 10	2A15
3 – 30	2A05	2 – 25	2A16
4 – 50	2A06	4 – 50	2A17
10 – 100	2A07	10 – 100	2A18
20 – 200	2A08	GPH OF WATER	
CCM OF WATER		0.2 – 2	2L28
5 – 50	2L09	0.4 – 5	2L19
10 – 100	2L10	1 – 10	2L20
20 – 240	2L11	2 – 20	2L21
		4 – 40	2L22

SERIES FP4000 FLOW RATES			
TABLE B**			
RANGE	MODEL	RANGE	MODEL
SCFH OF AIR	CODE	CCM OF WATER	CODE
0.4 – 5	4A30	4 – 50	4L38
1 – 10	4A31	10 – 120	4L56
2 – 20	4A32	25 – 225	4L51
4 – 40	4A33	40 – 400	4L50
10 – 100	4A34	4 – 660	4L52
14 – 150	4A35	100 – 1500	4L53
20 – 200	4A36	200 – 3000	4L54
CCM OF AIR		300 – 3700	4L55
100 – 1000	4A39	GPH OF WATER	
LPM OF AIR		1 – 10	4L45
0.4 – 5	4A40	2 – 25	4L48
1 – 10	4A41	4 – 50	4L49
2 – 20	4A42	6 – 60	4L46
3 – 30	4A43	SCFM OF AIR	
4 – 50	4A44	0.3 – 3	4A37
10 – 100	4A47		

** Available with millimeter scales as special order. Flow curves for a variety of gases and fluids for specific applications may also be ordered.

CAPACITY CODES

SERIES FP4500 FLOW RATES			
TABLE C			
RANGE	MODEL	RANGE	MODEL
SCFM OF AIR	CODE	GPM OF WATER	CODE
0.5 – 5	4A67	0.25 – 2.5	4L64
1 – 10	4A65	0.5 – 5	4L66
*2 – 20	4A68	LPM OF WATER	
LPM OF AIR		1 - 9	4L69
14 – 140	4A72	2 - 20	4L71
30 – 300	4A70	Dual Scales: SCFH/SCFM, GPM/GPH, and LPM/LPH	
*80 – 560	4A73		

* Minimum 10 psi supply pressure required when valve is specified.

SERIES FP5000-S FLOW RATES			
TABLE D			
RANGE	MODEL	RANGE	MODEL
SCFM OF AIR	CODE	GPM OF WATER	CODE
3 – 25	5A50	0.4 – 5	5L56
4 – 50	5A51	1 – 10	5L57
10 – 100	5A52	2 – 20	5L58
LPM OF AIR		LPM OF WATER	
100 – 700	5A53	1 – 19	5L59
100 – 1400	5A54	4 – 36	5L60
400 – 3000	5A55	5 – 75	5L61

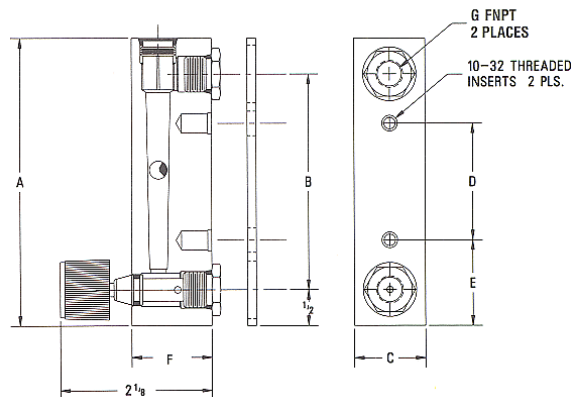
SERIES FP5000-I FLOW RATES			
TABLE E			
RANGE	MODEL	RANGE	MODEL
SCFM OF AIR	CODE	GPM OF WATER	CODE
3 – 25	5A50	0.4 – 5	5L56
4 – 50	5A51	1 – 10	5L57
10 – 100	5A52	2 – 20	5L58
LPM OF AIR		LPM OF WATER	
100 – 700	5A53	1 – 15	5L59
100 – 1400	5A54	4 – 36	5L60
400 – 4000	5A55	5 – 75	5L61

DIMENSIONS:

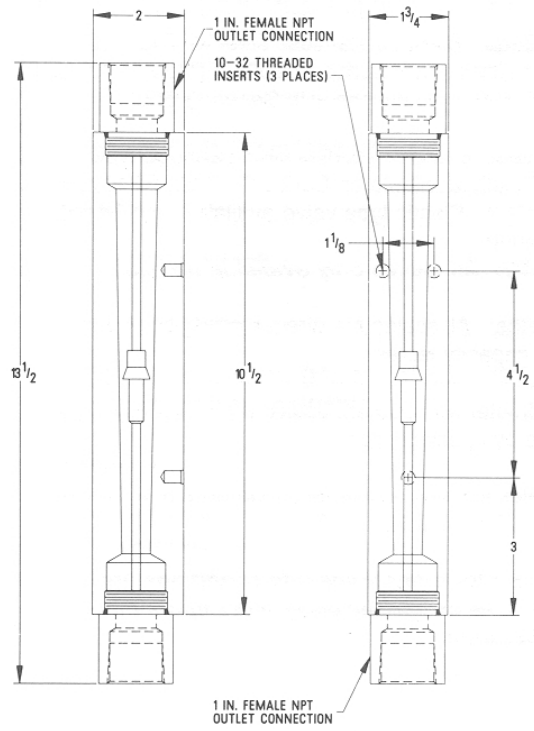
SERIES FP2000, FP4000, FP4500

DIMENSIONS							
Model	A	B	C	D	E	F	G
FP2000	4"	3"	1"	1-5/8"	1-3/16"	1-1/8"	1/8"
FP4000	6-1/2"	5-1/2"	1-3/8"	3-1/2"	1-1/2"	1-1/8"	1/8"
FP4500*	6-1/2"	5-1/2"	1-1/8"	3-1/2"	1-1/2"	1-3/8"	1/4"

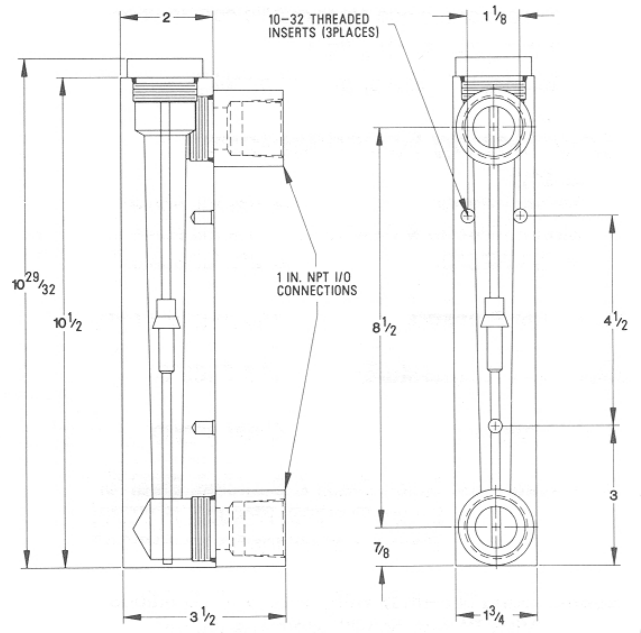
* Does not include a 1/8" backplate



SERIES FP5000-1



SERIES FP5000-S



MODEL NUMBER DESIGNATION

Series FP2000/4000/4500 2-INCH / 4-INCH SCALES

	FP	03	04	05	06
Capacity Code from Tables A, B, or C					
Fittings					
Brass			B		
Stainless Steel			S		
Integral Valve (on inlet)					
Not Required				N	
Required				V	
Seals					
Buna-A (Standard w/Brass)					BN
Viton (Standard w/Stainless Steel)					VT
Special					S

Series FP5000 5-INCH SCALES

	FP	03	04	05	06
Capacity Code from Tables D or E					
Fittings					
PVC (Standard)			P		
Fitting Location					
Back Connections (Horizontal)				S	
End Connections (Vertical)				I	
Valve (external)					
Not Required					N
Valve (Plastic).....(supplied unassembled)					V

Notes

ABB has Sales & Customer Support
expertise in over 100 countries worldwide

www.abb.com

The Company's policy is one of continuous product
improvement and the right is reserved to modify the
information contained herein without notice.

Printed in USA (09.24.03)

©ABB 2003



ABB Inc.
125 East County Line Road
Warminster
PA 18974
USA
Tel: +1 215 674 6000
Fax: +1 215 674 7183

ABB Ltd
Howard Road, St. Neots
Cambridgeshire
PE19 8EU
UK
Tel: +44 (0)1480 475321
Fax: +44 (0)1480 217948