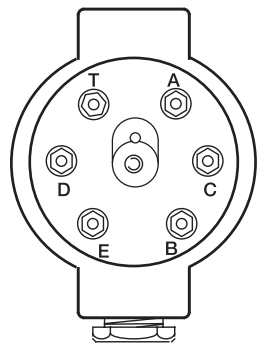


Electrical connections



Cell	AX4xx		TB82EC and TB84EC	Color
	Terminal block B Sensor B	Sensor A	Conductivity cell connections	
E	B1	B9	Temperature compensator common	Blue
T	B3	B11	Temperature compensator	Yellow
A	B5	B13	Drive -ve	Green
B	B6	B14	Sensor -ve	Red
C	B7	B15	Sensor +ve	White
D	B8	B16	Drive +ve	Black

Table 1 Electrical connections

Cables

Cable part number	Cable length m (ft)
AC200/181	1 (3.28)
AC200/182	2 (6.56)
AC200/183	5 (16.40)
AC200/184	10 (32.80)
AC200/185	15 (49.21)
AC200/186	20 (65.61)

Other lengths available on request

Table 2 Cables lengths and part numbers

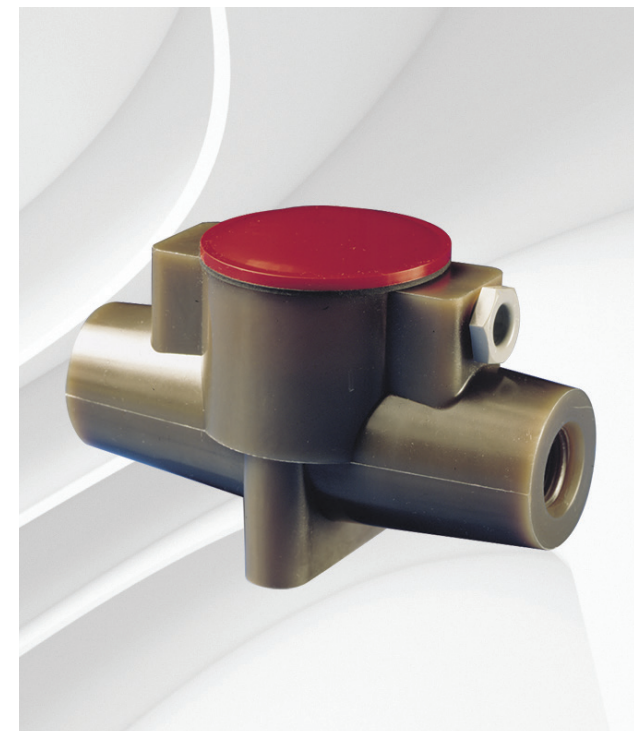
ABB Limited
Measurement & Analytics
 Oldends Lane
 Stonehouse
 Gloucestershire GL10 3TA
 UK
 Tel: +44 (0)1453 826 661
 Fax: +44 (0)1453 829 671
 Email:
 instrumentation@gb.abb.com
abb.com/measurement

We reserve the right to make technical changes or modify the contents of this document without prior notice. With regard to purchase orders, the agreed particulars shall prevail. ABB does not accept any responsibility whatsoever for potential errors or possible lack of information in this document. We reserve all rights in this document and in the subject matter and illustrations contained therein. Any reproduction, disclosure to third parties or utilization of its contents – in whole or in parts – is forbidden without prior written consent of ABB.
 © ABB, 2018

ABB MEASUREMENT & ANALYTICS
 OPERATING INSTRUCTION | SOI/2998-EN REV. A

2998/410 and 420

Special 4-electrode flow-through conductivity cells



SOI/2998-EN Rev. A 11.2018

Health and Safety

To ensure that our products are safe and without risk to health, the following points must be noted:

- 1 The relevant sections of these instructions must be read carefully before proceeding.
- 2 Warning labels on containers and packages must be observed.
- 3 Installation, operation, maintenance and servicing must only be carried out by suitably trained personnel and in accordance with the information given and site procedures.

Product recycling and disposal (European customers only)



Conductivity cells do not contain any substance that causes undue harm to the environment and must be disposed of in accordance with the Directive on Waste Electrical and Electronic Equipment (WEEE). They must not be disposed of in Municipal Waste Collection.

Introduction

The 2998 conductivity cell is available in 2 versions:

- 2998/410, ½ in BSP
- 2998/420, ½ in NPT

The 2998 cell can be used with the following transmitters:

- AX413, AX430, AX433 and AX436
- TB82EC series and TB84EC series

The cell must be calibrated in situ using the calibration routine within the associated transmitter.

For full instructions refer to:

- User Guide [IM/AX4CO](#); Section 4, Setup
- Instruction Manual [OI/TB84EC-EN](#); Section 6, Calibration Mode

Overall dimensions

