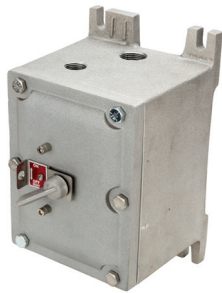

 TECHNICAL DATA SHEET

Motor control - XPMMS series

Manual motor starters

T&B EX™


XPMMS explosionproof manual motor starters are with Type MS132 Manual motor protector from ABB for applications up to 32A.

Certifications / Standards:


Features & Benefits:

- ABB's MS132 manual motor protectors are suitable for use with single and three phase motors up to 25 hp.
- Suitable as motor disconnect in single motor application
- Bolted flange design provides clear access to internal components
- Front mounted handle is padlock-able in either "on" or "off" position
- Durable cast on mounting feet. Contact factory for optional "bullwinkle" style mounting footprint, allowing installation in any application fast and easy
- Watertight O-ring for NEMA 4X applications

Options:

- Auxiliary contacts, signaling contacts, under voltage releases, and shunt trips are available as accessory
- Conduit (NPT & Metric) and device (NPSM) drilling & tapping
- Custom machining - milling, counter-boring, spot-facing, blind drilled holes, entries, chamfers

Applications:

- XPMMS is a simple, compact and economical alternative to conventional magnetic motor controllers for local control of a single motor
- For manual across-the-line starting of single and polyphase AC motors
- To provide motor running protection and manual starting and stopping
- In locations made hazardous due to the presence of flammable vapors, gases, or high combustible dusts

- For installation in petroleum refineries, chemical and petrochemical plants, and other process industry facilities
- In damp, wet or corrosive locations
- In non-hazardous areas where sturdy, durable enclosures are required

Construction / Materials / Finishes:

- Body and cover - copper-free Aluminum (3/10 of 1% max content), with a tumblast natural aluminum finish
- Mounting - Galvanized steel DIN rail
- Rotary actuating handle - copper-free aluminum
- Gasket - Nitrile rubber
- Cover Bolts - premium, high strength standard steel cover bolts are zinc-plated and coated

Conforms to:

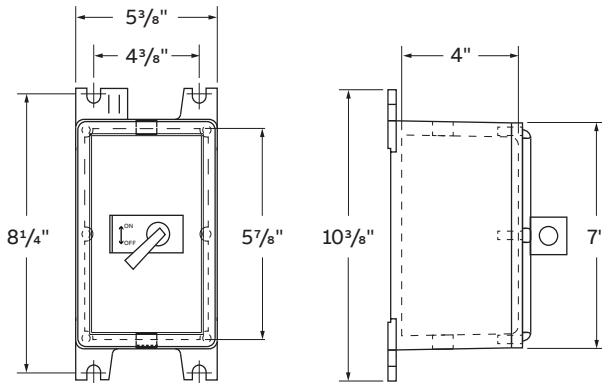
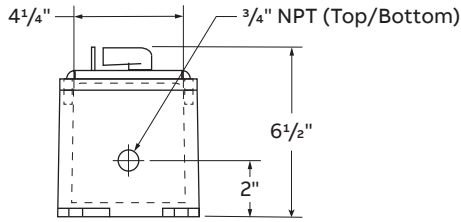
- Class I, Divisions 1 & 2, Groups C, D
- Class II, Divisions 1 & 2, Groups E, F, G
- UL Standard 1203 (Classified)
- CSA C22.2 No.30
- Enclosure NEMA Type 4, 7 & 9

Electrical Ratings

- Single Phase 120, 240 VAC; Three Phase 240, 480, 600 VAC
- Horsepower - see table

Weights

All enclosure sizes are 8.5 lbs



Ordering instructions:

To order any motor control starter product, use the catalog number followed by any option desired, separate options selected with dashes.

- Catalog number and selector guides
 - Manual motor starter with ABB® MS132-0.16 manual starter. See table below for motor ratings for single and three phase applications. (Example XPMMS1EE)
- Product options - see table below
 - The following options are available from the factory by adding suffix to catalog number – suffixes are added alphanumerically

XPMMS1EE

Explosionproof _____
 Manual motor starter _____
 Rated current (see below) _____
 Option (see below) _____

Product options	
Description	Suffix
Auxiliary Contacts (1NO, 1NC)	AC
Shunt Trip (specify voltage)	ST1
Under Voltage Release (specify voltage)	UV1
Breather / Drain Installed in Bottom	EE
Tripped Alarm Signal - Contacts (1NO, 1NC)	TA
Short-Circuit Alarm - Contacts (1NO, 1NC)	SC

Product selection

Part number	Max horsepower	Motor Rating															Rated Instantaneous short-circuit current Setting I _n [A]	Rated Current I _{Conventional} free-air Thermal current I _t [A]
		Motor Rating 1-Phase						Motor Rating 3-Phase										
		120 V AC			220-240 V AC			220-240 V AC			440-480 V AC			550-600 V AC				
Enclosure With Starter	ABB Starter only	hp	FLA	LRA	hp	FLA	LRA	hp	FLA	LRA	hp	FLA	LRA	hp	FLA	LRA		
XPMMS1	MS132-0.16	-	0.16	0.96	-	0.16	0.96	-	0.16	0.96	-	0.16	0.96	-	0.16	0.96	1.25...1.87	0.16
XPMMS2	MS132-0.25	-	0.25	1.5	-	0.25	1.5	-	0.25	1.5	-	0.25	1.5	-	0.25	1.5	1.95...2.92	0.25
XPMMS3	MS132-0.4	-	0.4	2.4	-	0.4	2.4	-	0.4	2.4	-	0.4	2.4	-	0.4	2.4	3.12...4.68	0.40
XPMMS4	MS132-0.63	-	0.63	3.78	-	0.63	3.78	-	0.63	3.78	-	0.63	3.78	-	0.63	3.78	4.91...7.37	0.63
XPMMS5	MS132-1.0	-	1	6	-	1	6	-	1	6	-	1	6	1/2	1	6	9.2...13.8	1.00
XPMMS6	MS132-1.6	-	1.6	9.6	1/10	1.6	9.6	-	1.6	9.6	3/4	1.6	9.6	3/4	1.6	9.6	14.7...22.1	1.60
XPMMS7	MS132-2.5	-	2.5	15	1/6	2.5	15	1/2	2.5	15	1	2.5	15	1 1/2	2.5	15	23...34.5	2.50
XPMMS8	MS132-4.0	1/8	4	24	1/3	4	24	1	4	24	2	4	24	3	3.9	26	40...60	4.00
XPMMS9	MS132-6.3	1/4	6.3	37.8	1/2	6.3	37.8	1 1/2	6.3	37.8	3	4.8	32	5	6.1	37	63...94.5	6.30
XPMMS10	MS132-10	1/2	9.8	58.8	1 1/2	10	60	3	9.6	64	5	7.6	46	7 1/2	9	51	120...180	10.00
XPMMS11	MS132-12	1/2	9.8	58.8	2	12	72	3	9.6	64	7 1/2	11	64	10	11	65	144...216	12.00
XPMMS12	MS132-16	1	16	96	2	12	72	5	15.2	92	10	14	81	10	11	65	192...288	16.00
XPMMS13	MS132-20	1 1/2	20	120	3	17	92	5	15.2	92	10	14	81	15	17	93	240...360	20.00
XPMMS14	MS132-25	2	24	144	3	17	127	7 1/2	22	127	15	21	116	20	22	116	300...450	25.00
XPMMS15	MS132-32	2	24	144	5	28	162	10	28	162	20	27	145	25	27	146	384...576	32.00

Notes:

- Manual motor starters should always be selected so that the actual motor current is within the setting range. Horsepower (hp) ratings are for reference only.
 - hp = Horsepower, FLA = Full Load Amps and LRA = Locked Rotor Amps
- To order enclosure without starter, use part number: XPMMS-NS.
- Product must be installed in accordance with applicable national and local electrical codes.

ABB Inc.
 Electrification products
 Memphis, Tennessee
 USA

We reserve the right to make technical changes or modify the contents of this document without prior notice. With regard to purchase orders, the agreed particulars shall prevail. ABB Inc. does not accept any responsibility whatsoever for potential errors or possible lack of information in this document.

We reserve all rights in this document and in the subject matter and illustrations contained therein. Any reproduction, disclosure to third parties or utilization of its contents – in whole or in parts – is forbidden without prior written consent of ABB Inc. Copyright© 2018 ABB Inc. All rights reserved

Let's write the future.
 Together. **abb.com**