

ControlMaster controllers and indicators

PC configuration backup tool

Upload / download procedures

Measurement made easy



1 Introduction

A ControlMaster's configuration (both controllers and indicators) can be backed up to a PC and restored to a device using the ControlMaster PC configuration backup tool.

The PC configuration backup tool is a utility used in conjunction with a USB Irda adaptor and can be downloaded from www.abb.com/recorders.

2 Items required

2.1 PC configuration backup tool kit

Description	Part no.
USB Irda adaptor	B12895
Information sheet	INF14/162-EN

Table 2.1 PC configuration backup tool CM30/0714

3 Firmware revision

The following firmware revisions are compatible with the upload/download tool:

Instrument	Firmware revision	
CM15	CM15 P5 00 02 22	or later
	CM15 P5 01 02 22	
CM10	CM10 P5 00 02 22	or later
	CM10 P5 01 02 22	
CM30	CM30 P5 00 02 22	or later
CM50	CM50 P5 00 02 22	or later
CMF160	CMF160 P5 00 02 22	or later
CMF310	CMF310 P5 00 02 22	or later

Table 3.1 Instrument firmware revision

i IMPORTANT (NOTE) If using an earlier firmware revision, contact your local ABB representative for more information.

4 PC configuration backup tool installation

1. Copy the PC configuration backup tool installation file to a local drive, unzip it (if necessary) and run 'Setup.exe'.
2. Follow the on-screen instructions to complete installation.

4.1 USB Irda adaptor driver installation

The driver for the USB Irda adaptor should install automatically when the adaptor is connected to a PC. If it does not install, follow the manufacturer's instructions supplied with the adaptor.

4.1.1 ControlMaster Irda port location

Fig. 4.1 shows the location of each ControlMaster's Irda port and the recommended distance between the adaptor and instrument.

1. Connect the USB Irda adaptor to a PC and align it with the Irda port on the front of the ControlMaster.

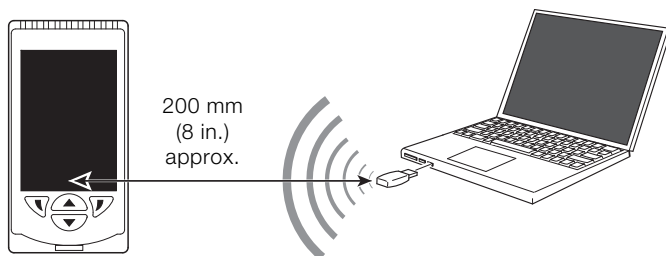
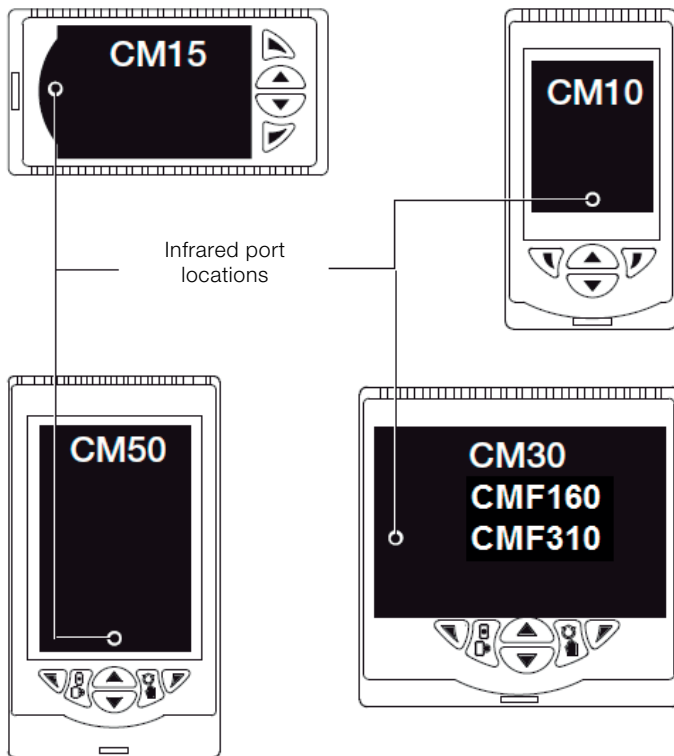
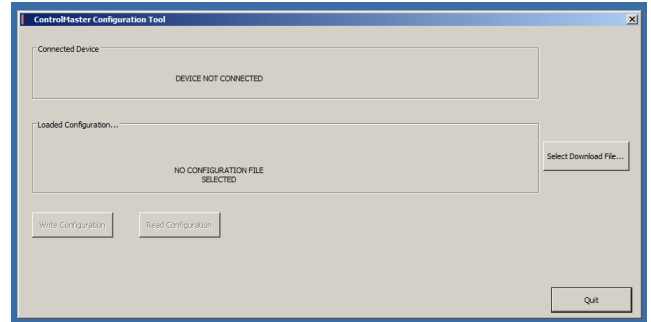


Fig. 4.1 Irda port location on ControlMaster instruments

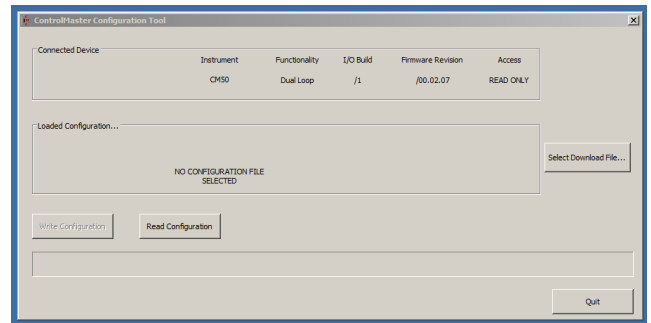
5 Backing up (downloading) a configuration

1. Plug the USB Irda Adaptor into the PC and run the ControlMaster PC configuration backup tool. The *ControlMaster Configuration Tool* window is displayed:



2. At the controller / indicator, press either the left hand or right hand key to display the *Access Level* page.
3. Select *Advanced* (enter any passwords required).
4. Select the *Device Setup* page.
5. Use the up / down keys to select *IrDA configuration*.
6. Select *Config. Description* to enter a name / ID for the configuration file (if required) – this is a unique identifier saved as part of the configuration file only.
7. Select *Connect*.

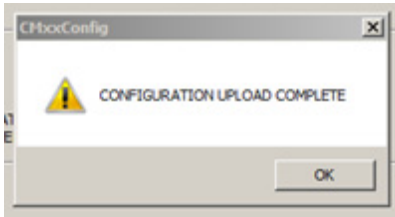
Align the USB Irda Adaptor with the Irda port on the ControlMaster to establish a connection – see Fig. 4.1. When a connection is established the *Connected Device* group box is populated (as shown below):



8. Select the *Read configuration* button.

- You are prompted to enter a file name and to select a save location for the configuration file.

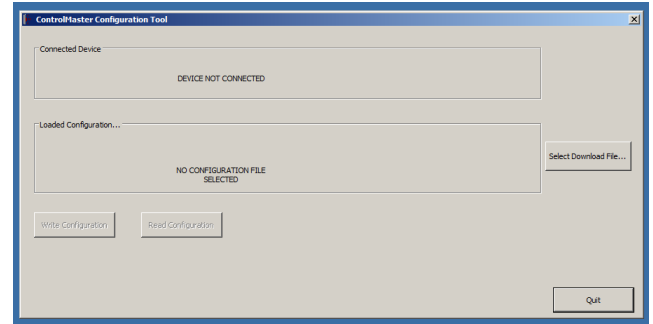
The configuration is now read from the instrument. A progress bar at the bottom of the dialog indicates progress (approximate time is 10 seconds). The following prompt is displayed if the transfer is successful:



- If the transfer is not successful, attempt to read the configuration again and proceed to step 12.
- If the problem persists:
 - confirm the Irda connection is active by checking the ControlMaster and application status messages
 - ensure a clear line-of-sight between the USB Irda adaptor and the ControlMaster
 If both conditions are met, return to step 7.
- Exit the *ControlMaster Configuration Tool*.
- Press *Exit* on the ControlMaster's *IrDA configuration* page.
- The ControlMaster will restart.

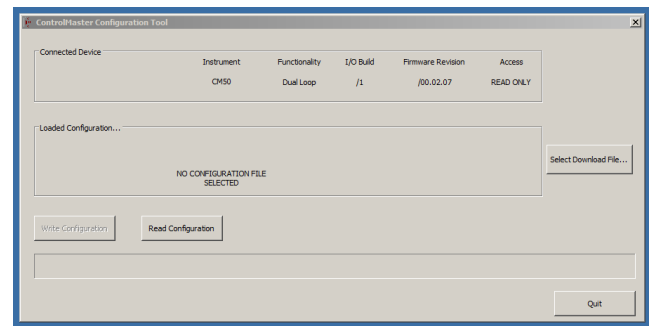
6 Restoring (uploading) a configuration

- Plug the USB Irda Adaptor into the PC and run the PC configuration backup tool. The *ControlMaster Configuration Tool* window is displayed:

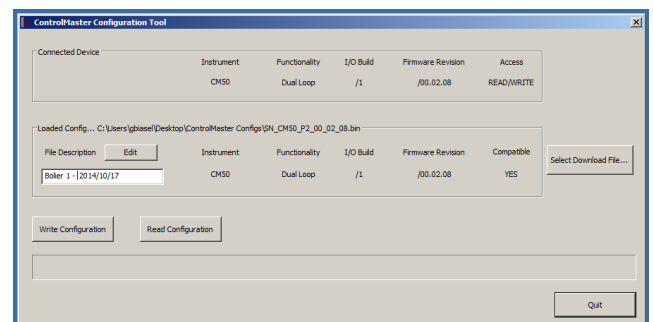


- At the controller / indicator, press either the left hand or right hand key to display the *Access Level* page.
- Select *Advanced* (enter any passwords required).
- Select the *Device Setup* page.
- Use the up / down keys to select *IrDA configuration*.
- Select *Connect*.

Align the USB Irda adaptor with the Irda port on the ControlMaster to establish a connection – see Fig. 4.1. When a connection is established the *Connected Device* group box is populated (as shown below):



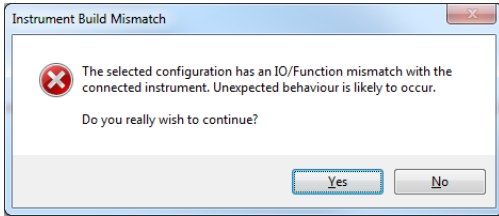
- Click the *Select Download* button.
- Select the file to be downloaded. When the required file has been selected, the *Loaded Configuration* group is populated with information about the file to be downloaded, including compatibility with the connected instrument (Yes / No).



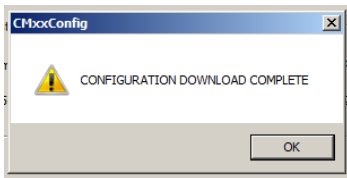
The *File Description* text field can be edited (if required). This edited information is stored as part of the instrument's configuration. (Once uploaded, configuration details can be viewed on the instrument at the *Configuration Level / Device Setup / IrDA Configuration / Config. Description* menu.)

9. Transfer the configuration to the instrument by clicking the *Write Configuration* button.

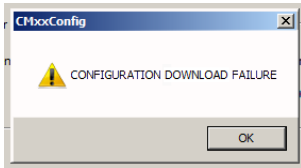
If the functionality and / or I/O of the instrument does not match the configuration to be transferred, the following prompt is displayed providing the option to continue or cancel the upload:



10. Click *OK* to write the configuration to the instrument. A progress bar at the bottom of the dialog indicates progress (approximate time is 10 seconds). The following prompt is displayed if the transfer is successful:



The following prompt is displayed if the transfer fails:



11. If the transfer is not successful, attempt to transfer the configuration again and proceed to step 12.
If the problem persists:
- confirm the Irda connection is active by checking the ControlMaster and application status messages
 - ensure a clear line-of-sight between the USB Irda adaptor and the ControlMaster
- If both conditions are met, return to step 9.
12. Exit the *ControlMaster Configuration Tool*.
13. Press *Exit* on the ControlMaster's *IrDA configuration* page.
14. The ControlMaster will restart.

Contact us

ABB Limited

Process Automation

Howard Road, St. Neots
Cambridgeshire, PE19 8EU
UK

Tel: +44 (0)870 600 6122

Fax: +44 (0)1480 213 339

Mail: enquiries.mp.uk@gb.abb.com

ABB Inc.

Process Automation

125 E. County Line Road
Warminster, PA 18974
USA

Tel: +1 215 674 6000

Fax: +1 215 674 7183

www.abb.com

Note

We reserve the right to make technical changes or modify the contents of this document without prior notice. With regard to purchase orders, the agreed particulars shall prevail. ABB does not accept any responsibility whatsoever for potential errors or possible lack of information in this document.

We reserve all rights in this document and in the subject matter and illustrations contained therein. Any reproduction, disclosure to third parties or utilization of its contents in whole or in parts – is forbidden without prior written consent of ABB.

Copyright© 2016 ABB

All rights reserved