

## Type SCADA-DEH

### Indoor/outdoor current transformer

#### Product features

- 600 volt, 10 kV BIL, 60 Hz
- Single, dual, and multi ratios
- For mounting over bushings of reclosers, circuit breakers, or cable terminations

#### Application

The SCADA-DEH indoor/outdoor, window-type current transformer is a 600 volt, 10 kV BIL rated unit. Primary current ratios are available from 300:5 thru 1200:5 at 60 Hertz, with a rating factor of up to 2.0. This dry-type, solid-cast current transformer operates for supervisory control and data acquisition (SCADA).

#### Mechanical description

The core and coil assembly is wound and encapsulated in a molded cast resin with a window size of 5¾". The clamp-type post secondary terminals are ¼"-20 slotted screws with associated hardware located inside a weather-tight aluminum conduit box with two (2) 1" NPT conduit hubs.

#### Accuracy performance

The SCADA-DEH can provide reasonable accuracy for measurement or relay applications (see ratings specific to each ratio). The transformer is accurate through its rating factor, and can be used continuously to this level.

#### Mounting

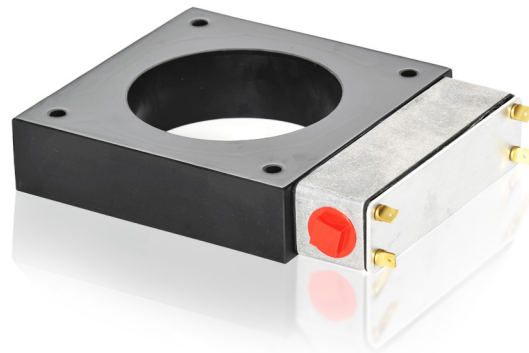
The SCADA-DEH is designed for mounting over the bushings of a distribution class recloser, circuit breaker, or cable termination. Three adjustable mounting brackets are provided to attach to bushing flange bolts.

#### Testing

This unit can be tested to all applicable IEEE, CSA, or IEC standards as requested.

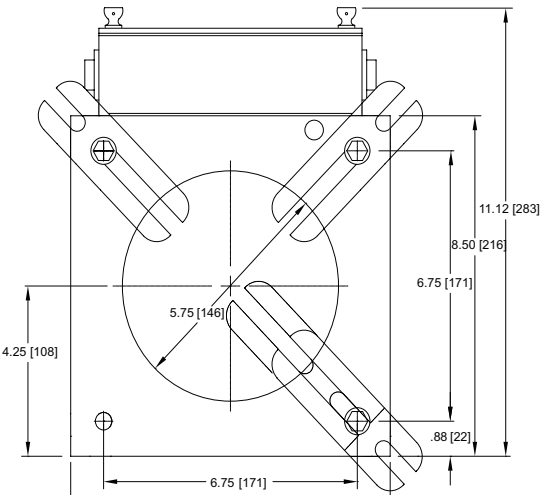
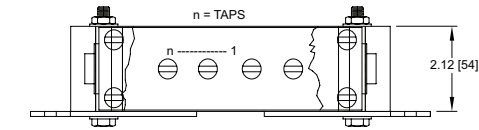
#### Options

The SCADA-DEH is available with a ground shield. The unit can be certified for revenue metering at certain ratio and burden levels if available and so requested. Contact factory for other needs.

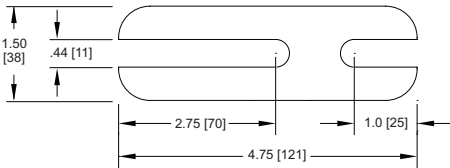


Unit dimensions

Note: Metric dimensions are displayed in [mm].



SCADA-DEH



Adjustable mounting bracket

Selection guide

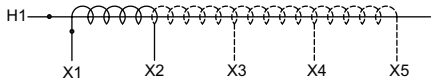
Ratio	Metering accuracy	Relay accuracy	Rating factor	Style number
300:5 MR	-	C10	2.0	A03S0001-570
450:5 MR	-	C15	2.0	A03S0002-570
600:5	0.3B-0.5	-	2.0	A03S0009-570
600:5 MR	-	C25	2.0	A03S0012-570
600:5	0.3B-0.2	-	2.0	A03S0014-570
800:5 MR	-	C30	2.0	A03S0020-570
1200:5 MR	-	C50	2.0	A03S0018-570

MR designates multi-ratio design.

One second thermal/mechanical ratings: 80 x full winding  $I_{nom}$  / unlimited mechanical

Units can be certified for revenue metering. Change "570" of style number to "590".

Additional styles available upon request. Contact your ABB sales representative or call +1-252-827-3212 for more information.



Wiring schematic

For more information please contact:

**ABB Inc.**  
**Medium Voltage Distribution Components**  
3022 NC 43 North  
Pinetops, NC 27864  
USA  
Phone: +1 252 827 3212  
Fax: +1 252 827 4286  
[www.abb.com/mediumvoltage](http://www.abb.com/mediumvoltage)

Note:

The information contained in this document is for general information purposes only. While ABB strives to keep the information up to date and correct, it makes no representations or warranties of any kind, express or implied, about the completeness, accuracy, reliability, suitability, or availability with respect to the information, products, services, or related graphics contained in the document for any purpose. Any reliance placed on such information is therefore strictly at your own risk. ABB reserves the right to discontinue any product or service at any time.

Copyright 2012 ABB.  
All rights reserved.