



StrikeRisk v5.0 Getting started

Contents

1	Introduction	1
2	Installing StrikeRisk	2 – 7
2.1	System Requirements	2
2.2	Installing StrikeRisk	2 – 5
2.3	Installation troubleshooting	6
2.4	Uninstalling StrikeRisk	7
3	Activating StrikeRisk	8 – 13
3.1	Activating StrikeRisk – Overview	8 – 9
3.2	Activating Standalone (blue) dongles	10 – 11
3.3	Activating Network (red) dongles	12
3.4	Dongle Server setup	12 – 13
4	The User Interface	14 – 17
4.1	The user interface – Overview	14 – 15
4.2	Customising the user interface	16 – 17
5	Basic steps	18 – 21
5.1	Opening the program	18 – 19
5.2	Closing the program	20
5.3	Creating or opening a Project	20
5.4	Developing a Project	20 – 21
5.5	Developing Cases	21
5.6	Generating reports	21
6	Options	22 – 25
6.1	StrikeRisk Options – Overview	22
6.2	Interpolation of Kms values	22 – 23
6.3	Open last Project	23
6.4	Setting the Full report template	23 – 24
6.5	Setting the Summary report template	24
6.6	Setting the Case template	24 – 25
6.7	Setting the font colour for Risk results that are acceptable or excessive	25

StrikeRisk v5.0 is designed for engineers, architects and contractors who are tasked with carrying out risk calculations in line with BS EN 62305-2: 2006 Risk management.

BS EN 62305-2 is key to the correct implementation of BS EN 62305-3 and BS EN 62305-4.

StrikeRisk is purpose designed to carry out the complex, laborious calculations of BS EN 62305-2, results can be achieved in minutes rather than the hours or days that it would take to do the calculations by hand.

The following are some of the key features of StrikeRisk v5.0

- Carry out and view multiple Cases (risk assessments) under the banner of a single project.
- Build new projects from previously saved Cases.
- Create multiple Template files for standard Cases.
- Split the structure under consideration into multiple Zones in order to pinpoint high risk areas.
- Consider multiple cables connecting to the structure.
- Consider multiple remotely connected structures.
- Quick and easy colour coded identification of risk factors requiring attention.
- Full detailed reporting/exporting facility.
- Detailed Online help.

The next few topics will help you to get started with StrikeRisk. You will be guided through:

- **Installing StrikeRisk**
- **Activating StrikeRisk**
- **User interface**
- **Basic steps**
- **StrikeRisk options**

Installing StrikeRisk

2.1 System Requirements

Before installing StrikeRisk v5.0 make sure your PC meets the following minimum requirements. You need ...

Software

- Windows 2000, Windows XP or Windows Vista (complete with latest service packs/security updates)
- Microsoft Internet Explorer 6.0

Hardware

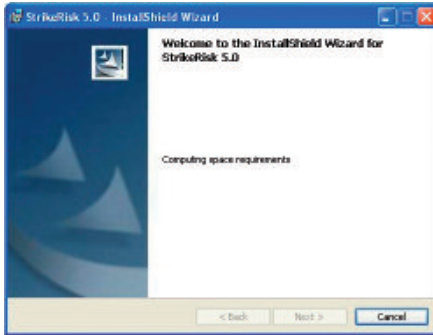
- Pentium III PC (500MHz or higher recommended)
- 256 MB RAM (500 MB recommended)
- 200 MB available disk space
- USB port
- Super VGA (1024 x 768) or higher resolution video adapter and 17" monitor

2.2 Installing StrikeRisk

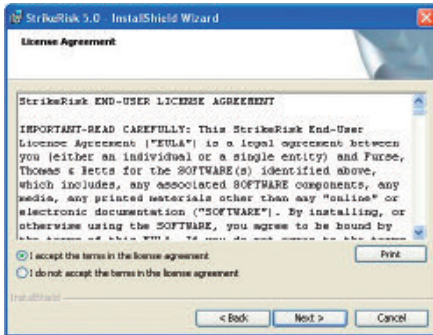
To install StrikeRisk v5.0, you'll need to run the Setup program contained on the CD-ROM. Perform the following steps to start installation of StrikeRisk v5.0.

- a. Insert the program CD in the CD-ROM drive of your computer. If your system is set to run programs automatically, the following dialogue box is displayed from which you can start the installation procedure. If your system is set to run programs automatically, the dialogue box on the next page is displayed for you to start the installation procedure. You can then go to the relevant directory where you will find the file *Setup.exe*. Select this file and click **OK**. Setup is then started manually. Once the welcome screen of the Setup program is loaded, click **Next** to continue with the installation.

If your system does not support the automatic execution of programs, you can access the contents of the CD by selecting **Start**, **Run** and **Browse**. You can then go to the relevant directory, typically *StrikeRisk 5 (D:)*, where you will find the file *Setup.exe*. Select this file and click **Ok**. Setup is then started manually. Once the welcome screen of the Setup program is then loaded. Click **Next** to continue with the installation.

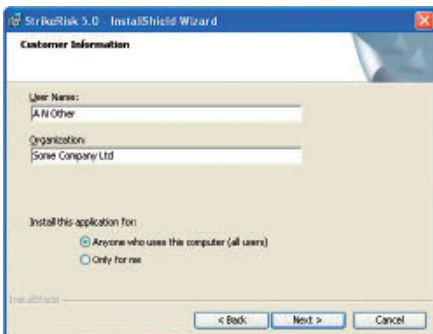


- b. A **license agreement** dialogue box will be displayed which should be read carefully. The agreement specifies the legal conditions under which you may install and use the StrikeRisk v5.0 software. If you agree to the terms, click **I accept the terms of the license agreement** and then **Next** to continue with the installation. If you do not agree with the terms of the license agreement then click **I do not accept the terms of the license agreement** and the installation wizard will exit.

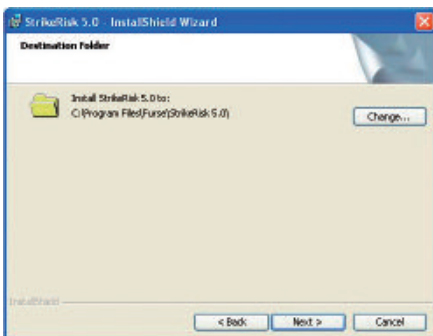


Installing StrikeRisk

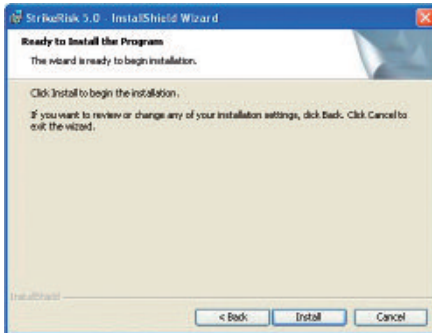
- c. Information is requested from the user in the next dialogue box. Make sure that you enter information in all fields so that installation can continue. Click **Next** to carry on with the installation.



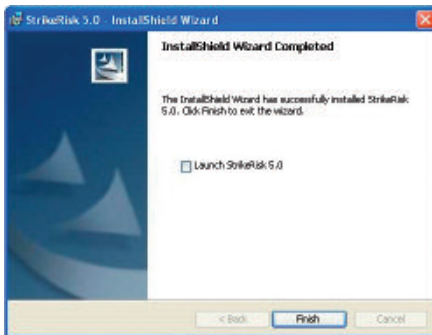
- d. You are now asked to specify the destination folder for the installation. The default path `C:\Program Files\Fursee\StrikeRisk 4.0\` is suggested. If you click **Next**, you are accepting this default. If you wish to change the destination folder, click **Change**. Specify your desired destination and click **Next** to continue.



- e. The program is now ready to be installed. If you wish you can click **Back** to return to previous setup dialogue boxes to review or change the choices made. If all settings are correct, you can click **Next** to continue the installation process and begin copying the files. The progress bar indicates the current file transfer status.



- f. A message is then displayed to inform you when Setup is successful. You can choose to launch StrikeRisk immediately the installation is finished by clicking the **Launch StrikeRisk** check box. Click **Finish** to complete the installation.



2.3 Installation troubleshooting

Occasionally, you may encounter problems while installing StrikeRisk. Some troubleshooting tips are given below that may resolve the problem. If you have any further questions, contact Furse Technical Support.

- Check to make sure there is enough free disk space on your hard disk to meet the system requirements. (The setup process should notify you if there is not enough free disk space prior to installation.)
- Before installation, shut down any running programs, including virus-checking programs. (Usually, virus-checking software has little or no impact on the installation process; however, if you are running such software and encounter difficulties with your StrikeRisk installation, turning off the virus-checking programs and then re-installing often resolves the problem.)
- Delete any files in your temporary folder. (This folder is determined by the TEMP environment variable. Usually it is located in *C:\Temp* or *C:\Windows\Temp*.)
- Run a disk-scanning utility. Hard disk errors can cause problems with the installation process. (Some Microsoft Windows systems contain a utility named Scandisk. If you have questions about disk-scanning utilities, talk to your system administrator.)
- Copy the StrikeRisk setup CD to your hard disk, then run *setup.exe* from your hard disk
- If you are using Windows NT, Windows 2000, or Windows XP, make sure that you are logged into your machine as the local administrator or as a user in the local administrator's group.

2.4 Uninstalling StrikeRisk

Furse recommends that you uninstall any older versions or evaluation versions of StrikeRisk prior to installing new versions. Running multiple versions of StrikeRisk applications on the same computer is not recommended or supported by Furse.

Before uninstalling StrikeRisk

Use the following steps to protect existing information you may have on your system.

Save existing StrikeRisk projects

Uninstalling removes program files only – project files you created in StrikeRisk remain on your system. We do recommend, however, that you copy and move any projects you saved in the StrikeRisk folder to another location on your hard disk (such as in your My Documents folder) before uninstalling StrikeRisk .

Save existing StrikeRisk templates

If you made changes to existing StrikeRisk templates and want to preserve the styles, save a copy of the template in another location on your hard drive (such as in your My Documents folder) before uninstalling StrikeRisk.

To uninstall StrikeRisk:

- a. From the **Start** menu, select **Settings – Control Panel**.
- b. Double-click on **Add/Remove Programs**.
- c. Click the **Install/Uninstall** tab, if your version of Windows has it.
- d. From the list of programs that you can remove, select **StrikeRisk v5.0** (or **StrikeRisk** if uninstalling version 4.0).
- e. Click **Add/Remove**.
- f. At the prompt, click **Yes** to confirm that you want to remove the program.
- g. The uninstall program removes program files, folders, and registry entries.
- h. When the files are removed, the uninstall program indicates that the process is complete. Click **OK**.

Activating StrikeRisk

3.1 Activating StrikeRisk – Overview

StrikeRisk is activated by a USB Security Key (sometimes known as a hardware lock or a dongle). Product activation ensures that a particular product is not used on more computers than is allowed by the end-user license agreement (EULA). Activation is simple and takes only a moment.

A full licensed copy of StrikeRisk is supplied complete with a dongle. The dongle must be activated to allow StrikeRisk to run beyond its 15 day evaluation period. The following activation procedures are specific to either:

- Standalone dongles
- Network dongles

Standalone dongles

Standalone dongles are blue in colour.

Standalone dongles are supplied when Furse Part No. SR500 is purchased.

A Standalone dongle is required to allow StrikeRisk to run (once the evaluation period has expired) on a single workstation. The Standalone dongle must be present and detected in a USB port of your PC to allow StrikeRisk to run on that same PC.

For details of the activation process see Activating Standalone (blue) dongles on pages 10 – 11.



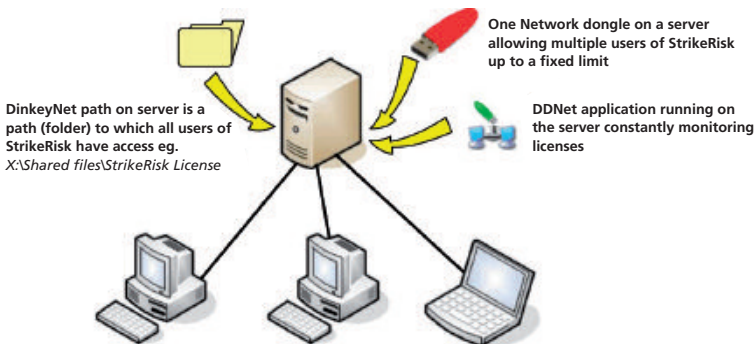
Network dongles

Network dongles are red in colour.

Network dongles are supplied when Furse Part No. SR501, SR505, SR510 or SR599 is purchased.

A Network dongle is required to allow StrikeRisk to be run (once the evaluation period has expired) by multiple users concurrently on multiple workstations up to a fixed number of licenses.

For details of the activation process see Activating Network (red) dongles on pages 12 – 13.



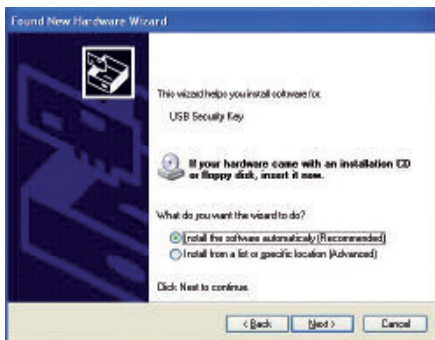
Activating StrikeRisk

3.2 Activating Standalone (blue) dongles

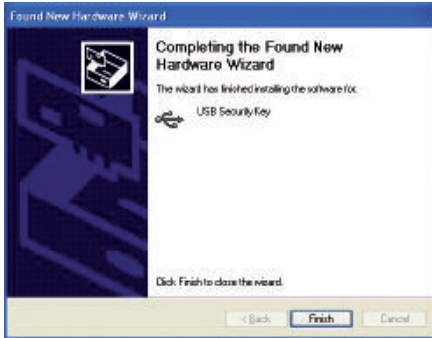
- Place the Standalone (blue) dongle (hardware lock) into an empty USB port of your PC. If your operating system is set up to recognize new hardware automatically, the following dialogue box is displayed from which you can start the activation procedure. Choose not to connect to Windows Update to search for software and click **Next**.



- Choose to install the USB Security Key software automatically and click **Next**.



- c. The USB Security Key will be configured. The following dialogue box is displayed. Click **Finish** to close the USB Security Key Activation Wizard.



Activating StrikeRisk

3.3 Activating Network (red) dongles

Overview

The Network (red) dongles can be connected to any machine (not necessarily a server) that is running any version of Windows, Linux or Mac OSX. We refer to this machine as a dongle server.

The dongle server needs access to a path (folder) that can also be accessed from all the workstations that you would like StrikeRisk to run from. We refer to this path as the DinkeyNet path. The DinkeyNet path (folder) can be on any machine on the network, including the dongle server (except if you run DDNet as a service – see below). DinkeyNet will create a sub-directory off this path. The workstations will need full access rights (including read/write/create/delete) to the path.

NOTE 1: If the DinkeyNet path is located on an NT/2000/XP/Vista workstation then the Operating system will not allow more than 10 simultaneous network users (5 for XP Home). If you want to allow more than 10 network users the DinkeyNet path should be located on the Server.

3.4 Dongle Server setup

Driver installation

- You will need to install the appropriate drivers (using Setupdrv.exe) to the dongle server only. You do not need to install the drivers to the workstations that will run StrikeRisk.
- Copy the file Setupdrv.exe from *D:\Dinkey\Setupdrv.exe* (where *D:* is your CD drive) onto the dongle server
- Run the file Setupdrv.exe.

Insert the Network dongle

- Place the (red) Network dongle into an empty USB port of the dongle server. If the operating system is set up to recognize new hardware automatically, a dialogue box is displayed from which you can start the activation procedure. Choose not to connect to Windows Update to search for software and click **Next**.
- Choose to install the USB Security Key software automatically and click **Next**.
- The USB Security Key will be configured. A dialogue box is displayed. Click **Finish** to close the USB Security Key Activation Wizard.

NOTE 1: This part of the process is identical to that followed for a standalone dongle. See [Activating Standalone \(blue\) dongles](#)

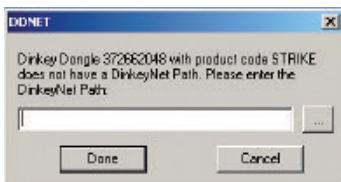
Create a DinkeyNet path

- a. Create a directory on the server to which all users of StrikeRisk will have access. We would recommend naming this folder *\StrikeRisk License*.
- b. For example if the server has a mapped drive labelled X:\ and there is already a folder on this drive (to which all users have access) named *X:\Shared Files*, create a sub folder called *\StrikeRisk License*. The DinkeyNet path is now defined as *X:\Shared Files\StrikeRisk License*.

Running DDNet

The DDNet program needs to be running on the dongle server for dongle checking to function. It can be run as a Windows program or as an NT Service. In general we recommend it is run as a Windows program because it has greater functionality. DDNet should be loaded when the operating system boots up. You can do this by adding DDNet to the Startup Group.

- a. Copy the file *DDNet.exe* from *D:\Dinkey\Setupdrv.exe* (where *D:* is your CD drive) onto the dongle server
- b. Run the file *DDNet.exe* by double clicking the **DDNet icon**.
- c. When DDNet is run for the first time it will prompt you to link a DinkeyNet path with any dongle that it has detected.

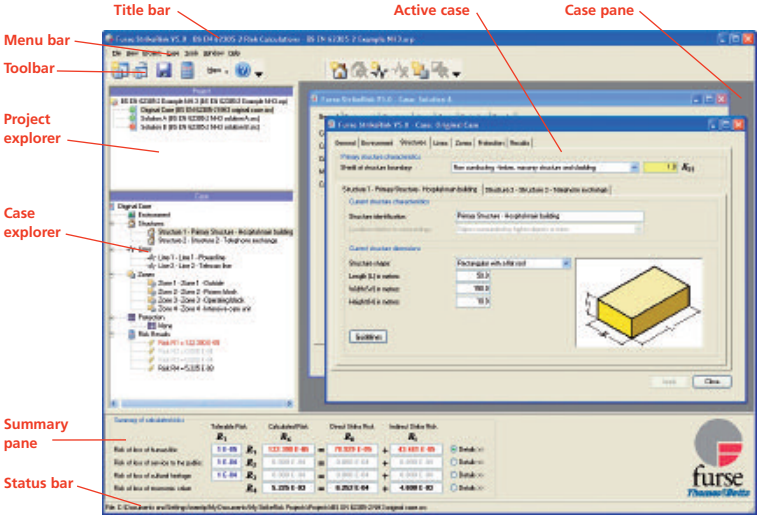


- d. Click the **Browse** button and search for the DinkeyNet path e.g. *X:\Shared Files\StrikeRisk License*.
- e. Click **Done**.
- f. The **DDNet icon** appears in the system tray.

User Interface

4.1 User interface – Overview

The StrikeRisk user interface consists of the following main parts:



Title bar

The **Title bar**, which is a horizontal area at the top of the StrikeRisk window, provides the filename of the currently Open Project.

Menu bar

The **Menu bar** is located at the top of the StrikeRisk window and contains the names of the individual menus of the application. To open a menu, click it with the mouse or press the ALT key together with the underscored letter in the menu name (for example ALT + F for File). Each menu displays a list of commands. Some of the commands have images next to them so you can quickly associate the command with the image. Some menu items branch into submenu items (for example **Maps**). If suspension points (...) appear after a menu item (for example for **File, Open Project**), this means that a dialogue box is opened when you execute the command. Shortcut (or pop-up) menus are available when you right-click text, objects, or other items.

Toolbar

The **Toolbar** contain buttons with images (the same images you see next to corresponding menu commands) that can be used to directly execute frequently used commands. The function of a button is displayed when you position the mouse pointer over a button and hold it there for a short time. If a button is greyed out, this means it is not available at present. StrikeRisk includes a **Standard Toolbar** that you can show and hide as needed. By default, the **Standard Toolbar** is docked below the **Menu bar**.

Project Explorer

The **Project Explorer** displays the status and make up of an open Project file. The **Project Explorer** shows all of the Case files that make up the current Project, whether Cases are open or closed and whether or not Cases require saving.

Case Explorer

The **Case Explorer** lists all aspects of the currently selected (open) Case. The **Case Explorer** can be used to accomplish tasks such as adding or removing Structures, Lines and Zones. The **Case Explorer** also provides an easy means of navigating through a Case.

Summary pane

The **Summary pane** displays the key results of the currently selected (open) Case. All four primary risks are shown along with their direct and indirect components. Risk results are colour coded to quickly identify if they are higher (red) or lower (green) than their tolerable value. By default, the **Summary pane** is located at the bottom of the StrikeRisk Window.

Status bar

The **Status bar** is a horizontal area at the bottom of the StrikeRisk window. It provides the full path and filename information about the currently selected Case.

Case pane

The **Case pane** is the area in which all currently open Cases are shown.

Active Case

The **Active Case** is the currently selected (open) Case and is displayed in front of any other open Cases.

4.2 Customising the user interface

You can change the program's user interface based on your preferences. The View menu provides options for hiding and displaying toolbars, panes, and other WYSIWYG (What you see is what you get) elements. Here are some ways of customizing the work environment:

- **Adjusting pane size**
- **Moving Toolbars**
- **Open or close a Toolbar**
- **Open or close the Summary pane**

Adjusting pane size

The program's user interface is divided into three main areas (panes):

- **Explorer pane**
- **Case pane**
- **Summary pane**

You can adjust the widths of the Explorer and Case panes to make them smaller or larger by:

- Place the pointer over the edge of the divide between the two panes. The pointer turns into a line with arrows on each end ↔.
- Press the left mouse button and drag left or right. The pane is resized after you release the mouse button.

The program maintains these settings until you adjust the panes again.

The **Explorer pane** is divided into two main areas:

- **Project Explorer**
- **Case Explorer**

You can adjust the relative heights of the two Explorers to make them smaller or larger by:

- Place the pointer over the edge of the divide between the two Explorers. The pointer turns into a Line with arrows on each end ↓.
- Press the left mouse button and drag up or down. The pane is resized after you release the mouse button.

The program maintains these settings until you adjust the panes again.

Moving Toolbars

By default, all toolbars are displayed across the top of the window, below the menu bar. You can move these toolbars to any location in the window.

To move a Toolbar:

- a. Move your cursor somewhere over an area of the Toolbar that does not display a button or drop-down list. A good place to point is the title bar.
- b. Press and hold the mouse button while you drag the Toolbar to a suitable location in your window.
- c. Release the mouse button to drop the Toolbar to its new location. It will remain in this new place until you move it again or close it.

Open or close a Toolbar

By default, the **Standard Toolbar** is open and displayed across the top of the window, below the menu bar. You can open and close this (or any other) Toolbar whenever necessary.

To open the Toolbar:

- a. From the **View** menu, select **Toolbar**.
- b. The open toolbar displays a check mark on the left.

To close the Toolbar:

- a. From the **View** menu, select **Toolbar**.
- b. The closed toolbar does not display a check mark on the left.

Open or close the Summary pane

By default, the **Summary pane** is open and displayed across the bottom of the user interface, below the **Explorer pane** and **Case pane**. You can open and close this **Summary pane** whenever necessary.

To open the Summary pane:

- a. From the **View** menu, select **Summary**.
- b. When open the **Summary** menu item display a check mark on the left.

To close the Summary pane:

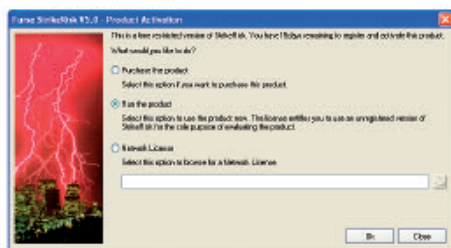
- a. From the **View** menu, select **Summary**.
- b. When closed the **Summary** menu item does not display a check mark on the left.

5.1 Opening the program

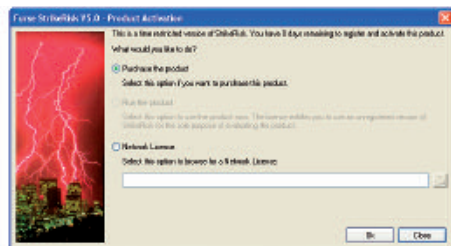
After you install the program, a **StrikeRisk** icon is displayed on your desktop. How **StrikeRisk** opens depends whether the program has been activated or if it is running in evaluation mode.

To open **StrikeRisk** running in evaluation mode:

- Double-click the **StrikeRisk** icon on your desktop. The following dialogue box is displayed. At the top of the dialogue a message indicates the number of days remaining before the program must be activated to run.



- Click **Run the product** (if the 15 day limit has not expired), then click **Ok**.
- The program splash screen is displayed and the user interface is loaded.
- Once the 15 day evaluation period has expired the option to **Run the product** is disabled as shown in the following dialogue box. The program must now be activated by a valid hardware lock before it will run.



- Click **Purchase the product**, if you do not have a valid hardware lock, then click **Ok**. Your web browser will open and take you to the **StrikeRisk** pages of www.furse.com where you will find details about purchasing **StrikeRisk**.

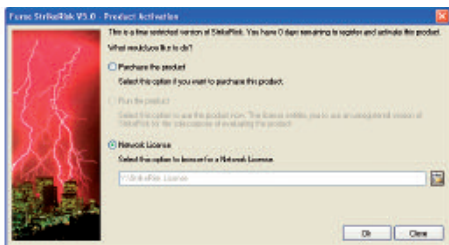
To open StrikeRisk activated by a Standalone (blue) dongle:

- Double-click the StrikeRisk icon on your desktop.
- The program splash screen is displayed and the user interface is loaded.

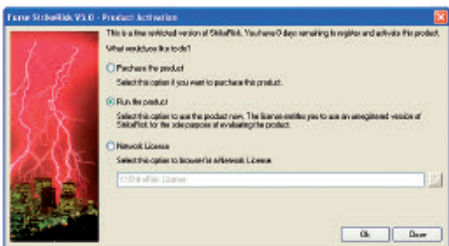
To open StrikeRisk activated by a Network (red) dongle:

The first time that StrikeRisk is run:

- Double-click the StrikeRisk icon on your desktop.
- The following Product Activation screen will appear.



- Click **Network License**.
- Click the **Select Network License Folder** button.
- Browse to the location of the Network License (This location should be advised to each user by the network administrator who activated the Network dongle)
- After a small delay the **Run the product** option will be enabled as shown in the following dialogue box.



- Click **Run the product**, then click **Ok**.
- The program splash screen is displayed and the user interface is loaded.

Subsequently when StrikeRisk is run:

- Double-click the StrikeRisk icon on your desktop.
- The program splash screen is displayed and the user interface is loaded.

5.2 Closing the program

From the **File** menu, select **Exit**.

NOTE: You may be prompted to update and or save files before the program Exits.

5.3 Creating or opening a Project

Use the following procedure to create a new StrikeRisk Project or open an existing Project.

To create a new StrikeRisk Project:

- a. From the **File** menu, select **New Project**.
- b. A new Project opens with a single Case (based on the Case template) loaded.

To open an existing StrikeRisk Project:

- a. From the **File** menu, select **Open Project...** The **Open Project** dialogue appears.
- b. In the **Open Project** dialogue, click the **Look in** dropdown box and browse to the directory where your Project files are stored.
- c. Select the required Project file.
- d. Click **Open**. The chosen Project opens.

NOTE: To see examples of StrikeRisk Projects open the sample projects that are included in the StrikeRisk installation. The sample projects are located in the **Samples** subfolder of the location where you installed StrikeRisk.

5.4 Developing a Project

The following is a recommended strategy for developing a Project within StrikeRisk. Not all of the tasks are necessary to develop a Project, but you will probably want to complete most of them.

- Create a new Project
- Define the Project properties
- Develop an original Case
 - Define the Environmental influences
 - Define the Primary Structure (the structure under consideration)
 - Define any connected Secondary Structures

- Define any connected Lines
- Define any Zones (areas) of the Primary Structure with common characteristics
- Develop one or more solution Cases (if necessary)
 - Define any Protection measures
- Generate reports

5.5 Developing Cases

The heart of each StrikeRisk Project is its Cases. Each Case is a separate risk assessment in its own right.

Each Case is used to carry out a series of calculations using relevant formulae to determine the actual risk R for the Structure under review. The designer must ascertain/decide the type of losses relevant to the structure, enter a number of dimensions and various weighting factors relative to the Structure, along with various assigned values from the appropriate tables in Annexes A, NB and NC of BS EN 62305-2. All of the foregoing can be entered or is accessible within each Case.

The calculated risk R is then compared to its corresponding value of R_T .

If the result shows $R \leq R_T$ then the Structure is adequately protected for a particular type of loss.

If the result shows $R > R_T$ then the Structure is not adequately protected for the type of loss, therefore protection measures need to be applied. These protection measures are determined from relevant tables given in BS EN 62305-2 (typically tables NB2 and NB3). Again these can be set within each Case.

The aim, by a series of trial and error calculations is to ultimately apply sufficient protection measures until the risk R is reduced below that of R_T .

5.6 Generating reports

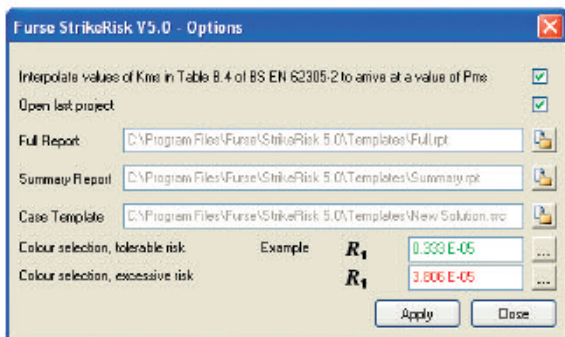
The ultimate aim of StrikeRisk is to produce the results of BS EN 62305-2 Risk Management calculations in a format that can be passed to a customer or easily incorporated within the documentation of an engineering project. StrikeRisk allows you to review/generate a number of different forms of output.

6.1 StrikeRisk Options – Overview

A number of program options can be set via the **Options** dialogue which can be accessed via the **Menu**.

To display Options dialogue using the Menu:

- From the **Tools** menu, select **Options**. The **Options** dialogue opens.



The following program **Options** can be set:

- Interpolation of Kms values
- Open last report
- Full report template
- Summary report template
- Case template
- Setting the font colour for Risk results that are acceptable or excessive

6.2 Interpolation of Kms values

This StrikeRisk option allows the user to switch between two methods of determining the factor P_{MS} based on the result of factor K_{MS} . The factor can be either a) be taken directly from Table NB.4 of BS EN 62305-2 by choosing the nearest tabulated value or b) determined by graphical means following linear interpolation of the ranges given in Table NB.4 of BS EN 62305-2. The latter method will lead to a more accurate assessment of factor P_{MS} .

To set the Interpolation of Kms values option:

- a. Open the **Options** dialogue box. For more information see [StrikeRisk Options – Overview](#).
- b. Click the **Interpolation of Kms values** tick box (a tick is now displayed).

To remove the Interpolation of Kms values option:

- a. Open the **Options** dialogue box. For more information see [StrikeRisk Options – Overview](#).
- b. Click the **Interpolation of Kms values** tick box (the box is now empty).

6.3 Open last Project

The **Open last Project** option allows the user to run StrikeRisk and automatically load the last opened Project.

To set Open last Project option:

- a. Open the **Options** dialogue box. For more information see [StrikeRisk Options – Overview](#).
- b. Click the **Open last Project** tick box (a tick is now displayed). When StrikeRisk is next opened the last Project will be automatically loaded.

To remove Open last Project option:

- a. Open the **Options** dialogue box. For more information see [StrikeRisk Options – Overview](#).
- b. Click the **Open last Project** tick box (the box is now empty). When StrikeRisk is next opened no project will be loaded.

6.4 Setting the Full report template

The Full report template is used every time a report is generated from the Report tab of an open Case with the **Full Report** option set in the Report tab toolbar. The Full report template may be altered to allow for different types of project or different clients. Report templates may only be altered via a licensed copy of Business Objects Crystal Reports software.

To set a new Full report template:

- a. Open the **Options** dialogue box. For more information see [StrikeRisk Options – Overview](#).
- b. Click the **Full Report** button. The **StrikeRisk Report Template** dialogue appears.
- c. In the **StrikeRisk Report Template** dialogue, click the **Look in** dropdown box and browse to the directory where your Template files are stored.

- d. Select the required Template file.
- e. Click **Open**. The chosen Template and full path are displayed.
- f. Click **Apply**.

6.5 Setting the Summary report template

The Summary report template is used every time a report is generated from the Report tab of an open Case with the **Summary Report** option set in the Report tab toolbar. The Summary report template may be altered to allow for different types of project or different clients. Report templates may only be altered via a licensed copy of Business Objects Crystal Reports software.

To set a new Summary report template:

- a. Open the **Options** dialogue box. For more information see [StrikeRisk Options – Overview](#).
- b. Click the **Summary Report** button. The **StrikeRisk Report Template** dialogue appears.
- c. In the **StrikeRisk Report Template** dialogue, click the **Look in** dropdown box and browse to the directory where your Template files are stored.
- d. Select the required Template file.
- e. Click **Open**. The chosen Template and full path are displayed.
- f. Click **Apply**.

6.6 Setting the Case template

The Case template is used every time a new project is started (with a single default Case) or a new Case is added to a project. The Case template may be altered to take into account the standard components and details that are common to all risk assessments a user wishes to make. Multiple templates may be created to allow for different types of project or different clients.

For example the standard template shipped with StrikeRisk sets up a case with no Lines and one internal Zone. The user may wish to start all new projects with two default Lines (power and telecom) and two Zones (outside the structure and inside the structure). The user may also wish to set certain default details e.g. the identification for the two Lines, the soil resistivity, the Project properties, the Case name etc.

To create a new Case template:

- a. Create a new project. *For more information see the [Create a new Project](#) topic from the online help system.*

- b. Open the default Case 'Original case'. *For more information see the [Opening a Case topic from the online help system](#).*
- c. Build the required default Case i.e. change the relevant parts of the Case to the values that will become the new default. *For more information see the [Building a Case topic from the online help system](#).*
- d. Save the Case to the StrikeRisk Templates folder 'C:\Program Files\Furse\StrikeRisk 5.0\Templates'. *For more information see the [Saving a new Case topic from the online help system](#).* Give the file a new name rather than overwriting '**New solution.src**'.
- e. Close the Project without saving the Project file. *For more information see the [Saving a new Project topic from the online help system](#).*

To set a new Case template:

- a. Open the **Options** dialogue box. *For more information see [StrikeRisk Options – Overview](#).*
- b. Click the **Case Template** button. The **StrikeRisk Case Template** dialogue appears.
- c. In the **StrikeRisk Case Template** dialogue, click the **Look in** dropdown box and browse to the directory where your Template files are stored.
- d. Select the required Template file.
- e. Click **Open**. The chosen Template and full path are displayed.
- f. Click **Apply**.
- g. Now try creating a new Project and examine the default Case.

6.7 Setting the font colour for Risk results that are acceptable or excessive

The colour selection chosen is used in the Summary Pane, the Case Explorer and the Component Risk tab of a Case every time a result is less than (acceptable) or greater than (excessive) its tolerable risk.

To set the font colour for Risk results:

- a. Open the **Options** dialogue box. *For more information see [StrikeRisk Options - Overview](#).*
- b. Click the **Colour** selection, tolerable risk button for either acceptable or excessive risks. The Windows Colour dialogue appears.
- c. In the Windows Colour dialogue, choose a colour from either the basic colours or click **Define Custom Colours** and choose a custom colour.
- d. Click **Ok**. An example of the chosen colour is displayed
- e. Click **Apply** to close the options dialogue.



UK OFFICE

Thomas & Betts Limited

Furse

Wilford Road

Nottingham

NG2 1EB

United Kingdom

Switchboard +44 (0)115 964 3700

Fax +44 (0)115 986 0538

Sales tel +44 (0)115 964 3800

Sales fax +44 (0)115 986 0071

enquiry@furse.com

www.furse.com

All enquiries to UK office

The content of the Thomas & Betts publication has been carefully checked for accuracy at the time of print. However, Thomas & Betts doesn't give any warranty of any kind, express or implied, in this respect and shall not be liable for any loss or damage that may result from any use or as a consequence of any inaccuracies in or any omissions from the information which it may contain.

Copyright Thomas & Betts 2008. Copyright in these pages is owned by Thomas & Betts except where otherwise indicated. No part of this publication may be reproduced, copied or transmitted in any form or by any means, without our prior written permission. Images, trade marks, brands, designs and technology are also protected by other intellectual property rights and may not be reproduced or appropriated in any manner without written permission of their respective owners. Thomas & Betts reserves the right to change and improve any product specifications or other mentions in the catalogue at its own discretion and at any time. These conditions of use are governed by the laws of the Netherlands and the courts of Amsterdam shall have exclusive jurisdiction in any dispute.

FURSE-RMSIM-1108

Thomas & Betts