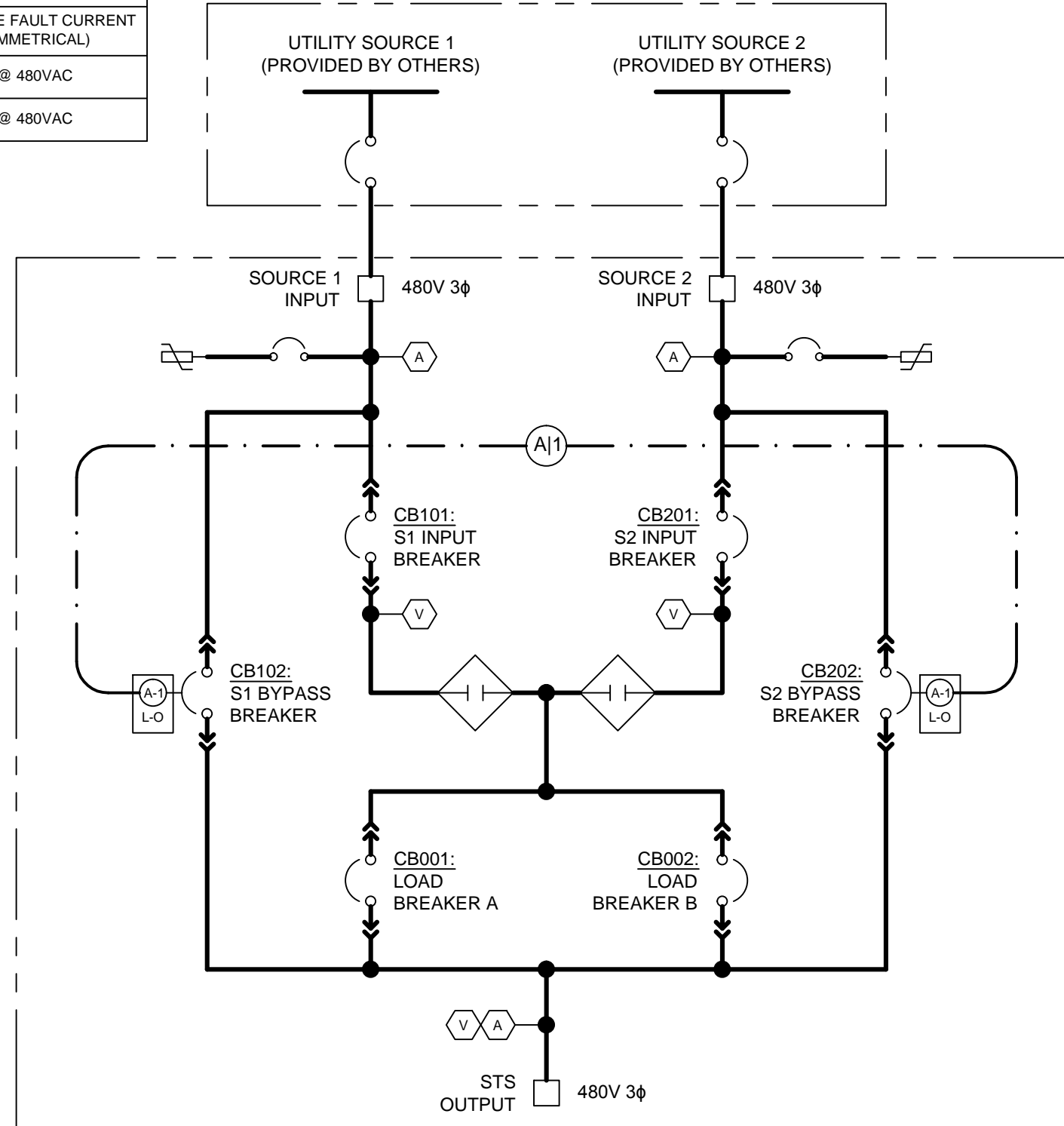


We reserve all rights in this document and in the information contained therein. Reproduction, use or disclosure to third parties without express authority is strictly forbidden. © Copyright 2014 ABB.

**TABLE 1.1: OCPD RECOMMENDATIONS**

MAKE	MODEL	RATING	TYPE	MAX AVAILABLE FAULT CURRENT (RMS SYMMETRICAL)
ABB	TMAX T8-V	1600A, 600V	3P MCCB	100kA @ 480VAC
SQUARE-D	MASTERPACT NW-L	1600A, 600V	3P ACB	100kA @ 480VAC



**LEGEND:**

- AC SWITCH
- TERMINAL
- SPD (MOV)
- NON-AUTOMATIC SWITCH
- INTERLOCK, LOCK OPEN KEY REMOVED
- INTERLOCK KEY, NUMBER \_|\_
- POWER
- INTERLOCK
- CONTROL
- CURRENT SENSING
- VOLTAGE SENSING

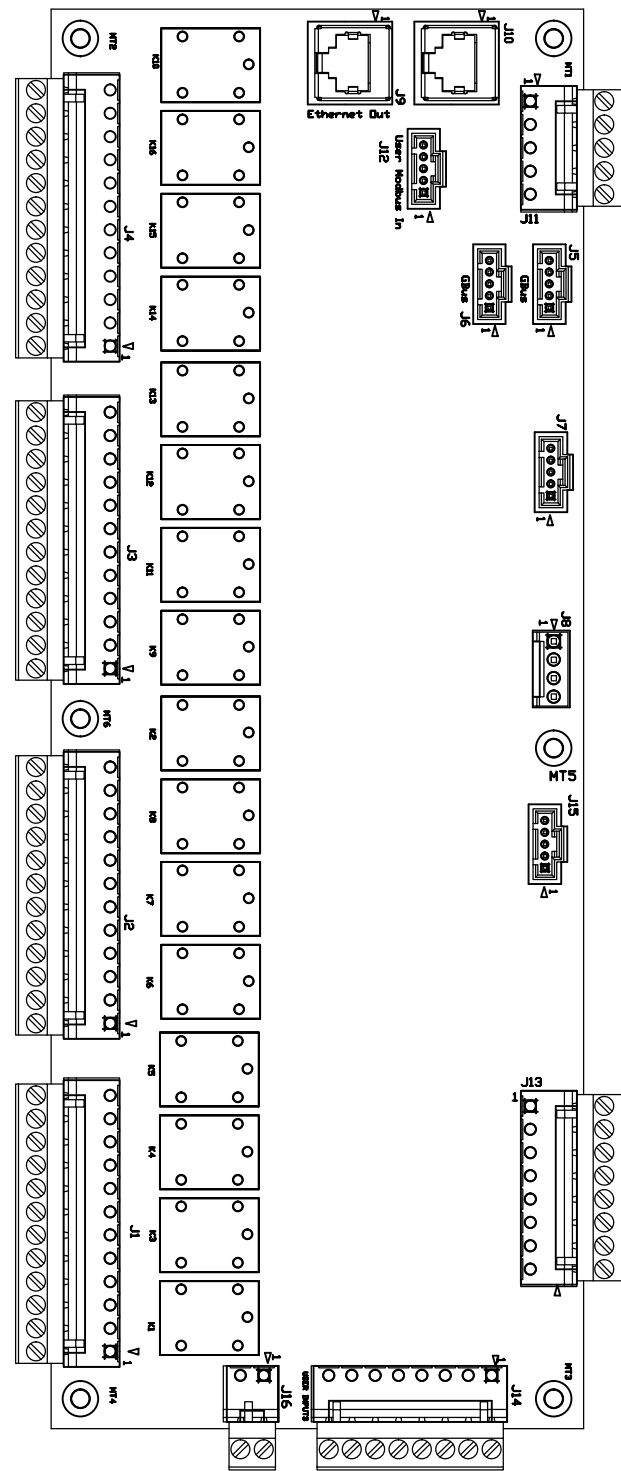
**NOTES:**

1. INSTALLATION SHALL COMPLY WITH ALL APPLICABLE NATIONAL, STATE, AND LOCAL CODES.
2. REFER TO PRODUCT DOCUMENTATION FOR ADDITIONAL DETAILS PRIOR TO INSTALLATION AND SITE PREPARATION WORK.
3. THE ONELINE DIAGRAM PROVIDES AN OVERVIEW OF THE POWER STAGE OF THE TYPICAL STS AND IS NOT REPRESENTATIVE OF ITS PHYSICAL LAYOUT. REFER TO THE OUTLINE DIAGRAM FOR DETAILS.
4. THE STS IS DESIGNED FOR CONNECTION TO 480VAC 3φ, 3 OR 4W SOLIDLY GROUNDED SOURCES ONLY. FOR 4W CONFIGURATIONS, THE NEUTRAL IS SOLID AND UN-SWITCHED. CONTACT ABB IF OTHER.
5. UPSTREAM OVERCURRENT PROTECTION IS REQUIRED, REFER TO TABLE 1.1 FOR RECOMMENDATIONS.
6. MAXIMUM RATED SHORT CIRCUIT CURRENT IS 100KA.

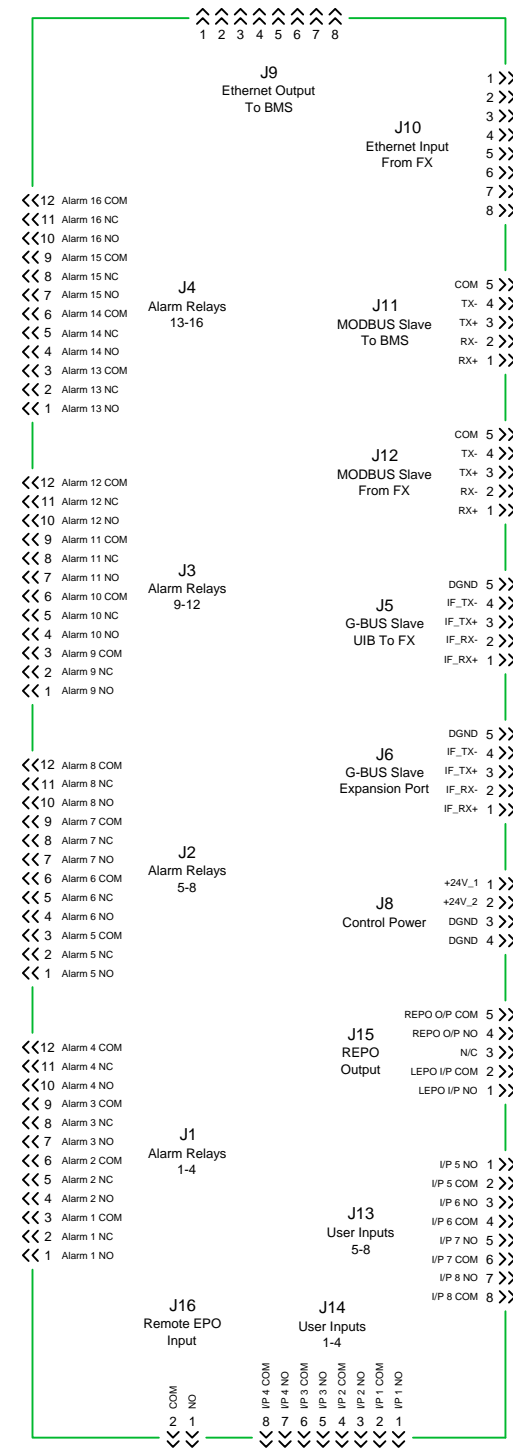
Prepared <b>T. Kendzia</b>	Title <b>ONELINE DIAGRAM: SS4 1600A, POWER STAGE &amp; INTERLOCK</b>
Reviewed <b>J. Valentine</b>	
Approved <b>C. Belcastro</b>	

<b>ABB</b>	Division/Dept. <b>EPPC/Power Protection</b>
------------	--

A00	--	TAK	Initial Release	03/02/2018
Rev.	ECN#	Resp.	Description	Date
Revision Table				
Item ID <b>94-7300-00000130</b>	Item Rev. <b>A00</b>	Date Drawn <b>03/02/2018</b>		
Document ID <b>ONE-00089586</b>	Doc. Rev. <b>A00</b>	Sheet Size <b>B</b>		
Document Kind <b>CircuitDiagram</b>				Page <b>1 / 2</b>



DETAIL A  
PHYSICAL LAYOUT



DETAIL B  
ELECTRICAL CONNECTIONS

**NOTES:**

1. INSTALLATION SHALL COMPLY WITH ALL APPLICABLE NATIONAL, STATE, AND LOCAL CODES.
2. REFER TO PRODUCT DOCUMENTATION FOR ADDITIONAL DETAILS PRIOR TO INSTALLATION AND SITE PREPARATION WORK.
3. ALL CUSTOMER WIRING TO THE USER INTERFACE BOARD (UIB) SHALL BE CONSIDERED FIELD WIRING AND CONSTRUCTED OF COPPER CONDUCTORS ONLY.
4. THE FIELD WIRING CONNECTION TO J9 OF THE UIB, FOR ETHERNET / MODBUS TCP COMMUNICATIONS SHALL BE MADE USING CAT 5 CABLING.
5. ALL OTHER FIELD WIRING CONNECTIONS ARE MADE VIA PLUGGABLE SCREW TERMINALS, RATED FOR SOLID OR STRANDED WIRING SIZED #12 TO #22AWG.
6. ALL UIB OUTPUTS ARE SPDT RELAYS EQUIPPED WITH DRY FORM C CONTACTS RATED FOR 250VAC 5A, 120VAC 10A, AND 30VDC 8A RESISTIVE LOADS MAX. SEE USER MANUAL FOR DETAILS.
7. ALL UIB INPUTS ARE CONFIGURED FOR N.O. CONTACTS. SEE USER MANUAL FOR DETAILS.

Prepared <b>T. Kendzia</b>	Title <b>ONLINE DIAGRAM: SS4 1600A, USER INTERFACE DETAILS</b>
Reviewed <b>J. Valentine</b>	
Approved <b>C. Belcastro</b>	



A00	--	TAK	Initial Release	03/02/2018
Rev.	ECN#	Resp.	Description	Date
Revision Table				
Item ID	94-7300-00000130	Item Rev.	A00	Date Drawn
Document ID	ONE-00089586	Doc. Rev.	A00	Sheet Size
Document Kind	CircuitDiagram			Page
				2 / 2