

We reserve all rights in this document and in the information contained therein. Reproduction, use or disclosure to third parties without express authority is strictly forbidden. © ABB 19

Pos. Lage	R connects förbinder	H connects förbinder
1	12-13	2-15
2A		3-15
2		4-15
3A		5-15
3B		6-15
3		7-15
4A		8-15
4		9-15
5A		10-15
5B		11-15
5	12-14	12-15
5C		1-15
5D		2-15
5E		3-15
6		4-15
6A		5-15
7		6-15
7A		7-15
7B		8-15
8		9-15
8A	10-15	
9		10-15

A position with letter is a through position and gives the same voltage as the normal position.

Läge med bokstav är ett genomloppsläge och ger samma spänning som normalläget.

On-load tap-changer type UZER., UZFR., 9 tap positions, plus/minus switching.

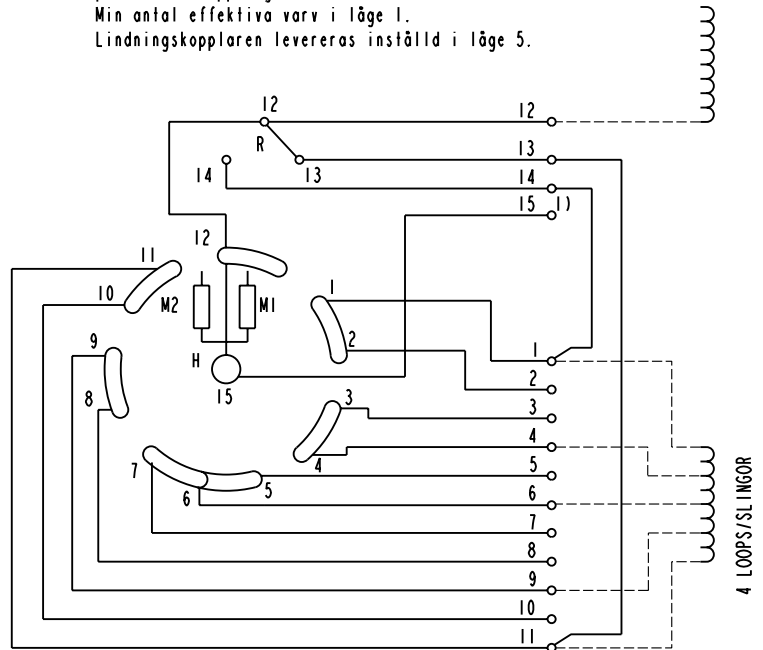
Min effective No. of turns in pos. 1.

The tap-changer is delivered set in pos. 5.

Lindningskopplare typ UZER., UZFR., 9 lägen, plus/minus-koppling.

Min antal effektiva varv i läge 1.

Lindningskopplaren levereras inställd i läge 5.



The tap-changer is shown in pos. 5
Lindningskopplaren visad i läge 5

R Change-over selector
Plus/minus-omkopplare

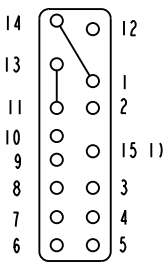
H Main contact
Huvudkontakt

M1, M2 Transition contacts
Motståndskontakter

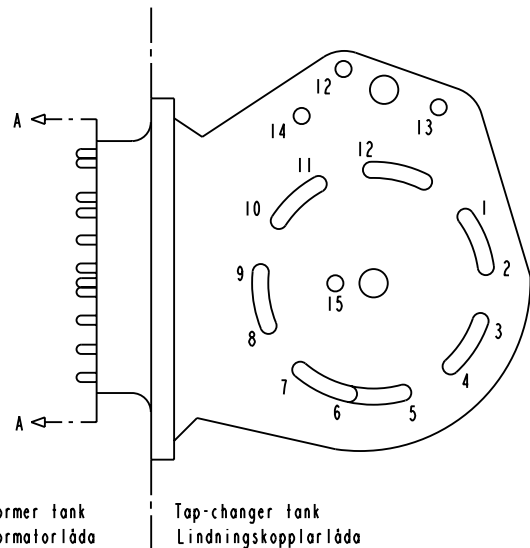
1) Connections between the terminals 15 of the three phases are included in the star-point type.

Förbindningar mellan uttag 15 i de tre faserna ingår i nollpunktsutförandet.

Terminal board Plint



Section A-A
Sektion A-A



Transformer tank
Transformatorlåda

Tap-changer tank
Lindningskopplarlåda

Sheet	Cont
	Year Week
Form No.	Dept
	Year Week
Design checked by	Rev In
	Revision
Design checked by	Appd
	Year Week
Design checked by	Accepted for prod by
	Rev In
Design checked by	Design checked by
	Drawn by
Design checked by	Issued by Dept
	Year Week
Design checked by	Lang
	Sheet
Design checked by	Rev In
	Cont



Asea Brown Boveri

Description (English)
CONNECTION DIAGRAM

Description (own language)
KOPPLINGSSHEMA

DATAORIGINAL

File name
0397-1

Lang

Sheet

1

Rev In

Cont

5492 0397-1