

InLine

Fuse Switches

Technical Data

XUBM Fuse rails

	XUBM00	XUBM1	XUBM2	XUBM3
For HRC fuse links acc. to IEC 60269-2-1.	00	1	2	3
Rated operational voltage Ue (V)	690	690	690	690
Rated operational current Ie (A)	160	250	400	630
Rated insulation voltage Ui (V)	1000	1000	1000	1000
Conditional short circuit current – with fuse links. (kArms)	50	50	50	50
Rated frequency. (Hz)	50-60	50-60	50-60	50-60
Degree of protection from the front acc. to IEC 60529. *)	IP 20	IP 20	IP 20	IP 20

*) With fuse protection cover or isolated gripping lugsg lugs

XLBM Fuse switch disconnecter

	XLBM00			XLBM1			XLBM2			XLBM3		
For HRC fuse links acc. to IEC 60269-2-1.	00			1			2			3		
Rated operational voltage Ue (V)	400	500	690	400	500	690	400	500	690	400	500	690
Rated operational current Ie (A)	160	160	125	250	250	200	400	400	315	630	630	500
Thermal current w/fuse link Ith (A)	160			250			400			630		
Rated insulation voltage Ui (V)	1000			1000			1000			1000		
Rated impulse withstand voltage Uimp (kV)	8			8			8			8		
Fuse protected short circuit withstand (kArms)	50			50			50			50		
Fuse protected short circuit making (kArms)	50			50			50			50		
Rated making and breaking capacity:	AC23B	AC22B	AC21B	AC23B	AC22B	AC21B	AC23B	AC22B	AC21B	AC23B	AC22B	AC21B
Rated frequency. (Hz)	50-60			50-60			50-60			50-60		
Power losses at Ith without fuse-link (W)	16,1			16,9			36,8			75,4		
Degree of protection from the front acc. to IEC 60529.	Open IP 20 Closed IP 30			Open IP 20 Closed IP 30			Open IP 20 Closed IP 30			Open IP 20 Closed IP 30		

InLine

Fuse Switches

Apparatus and Accessories



XUBM fuse rail

	XUBM00-100	XUBM00	XUBM1/2/3
Fuse link	NH00	NH00	NH1/2/3
Rated current	160 A	160 A	250 A 400 A 630 A
Module width	50 mm	50 mm	100 mm
Cable Al / Cu mm ² ¹⁾	1,5 - 95	1,5 - 95	95 - 240
Cable terminal ²⁾	3 x M8	3 x M8	3 x M12
Order code	1SEP101836R0001	1SEP102111R0101	XUBM1 1SEP102111R0101 XUBM2 1SEP102112R0101 XUBM3 1SEP102113R0101

1. Cable lugs in accordance with DIN 46235 and DIN 46239.
2. Cable clamps are available as accessories.



XLBM fuse switch disconnecter

	XLBM00-3P-100	XLBM00-1P	XLBM00-3P	XLBM1/2/3-1P	XLBM1/2/3-3P
Fuse link	NH00	NH00	NH00	NH1/2/3	NH1/2/3
Rated current	160 A	160 A	160 A	250 A 400 A 630 A	250 A 400 A 630 A
Module width	50 mm	50 mm	50 mm	100 mm	100 mm
Cable Al / Cu mm ² ¹⁾	1,5 - 95	1,5 - 95	1,5 - 95	95 - 240	95 - 240
Cable terminal ²⁾	3 x M8	3 x M8	3 x M8	3 x M12	3 x M12
Order code	1SEP101818R0001	1SEP102140R0101	1SEP102140R0121	XLBM1 1SEP102141R0101 XLBM2 1SEP102142R0101 XLBM3 1SEP102143R0101 XLBM3 1SEP102143R0101	XLBM1 1SEP102141R0121 XLBM2 1SEP102142R0121 XLBM3 1SEP102143R0121 XLBM3 1SEP102143R0121

1. Cable lugs in accordance with DIN 46235 and DIN 46239.
2. Cable clamps are available as accessories.

InLine

Fuse Switches

Apparatus and Accessories (continued)



IP20 Z-busbars, type BZ

Z-busbars for 400/630 A. The busbar kit includes:

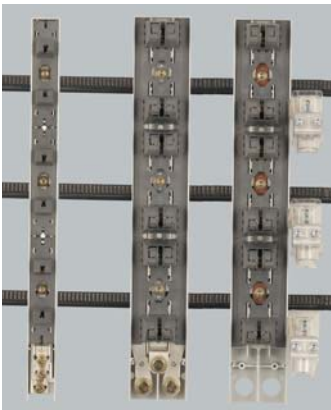
- Busbar L1, L2 and L3
- Two busbar holders

The Z-busbars are completely IP20 protected.

Type	Rated current	Width	Order code
BZ 400 A			
BZ 400A/284	400 A	284 mm	1SEP824063R0001
BZ 400A/536	400 A	536 mm	1SEP824064R0001
BZ 400A/851	400 A	851 mm	1SEP824065R0001
BZ 400A/1201	400 A	1201 mm	1SEP824066R0001
BZ 630 A			
BZ 630A/284	630 A	284 mm	1SEP824067R0001
BZ 630A/536	630 A	536 mm	1SEP824068R0001
BZ 630A/851	630 A	851 mm	1SEP824069R0001
BZ 630A/1201	630 A	1201 mm	1SEP824070R0001

XUBM-Z and XLBM-Z may be hooked on:

- Z busbars type BZ
- Standard flat busbars, Al/Cu



XLBM-Z fuse rails

	XUBM00-Z	XUBM1/2/3-Z	XUBM1/2/3-ZS
Fuse link	NH00	NH1/2/3	NH1/2/3
Rated current	160 A	250 A 400 A 630 A	250 A 400 A 630 A
Module width	50 mm	100 mm	150 mm
Cable Al / Cu mm ²	1,5 - 95	95 - 240	50 - 300
Cable terminal	3 x M8	3 x M12	Clamps
Order code	1SEP102110R0201	XUBM 1 1SEP102111R0201 XUBM 2 1SEP102112R0201 XUBM 3 1SEP102113R0201	XUBM 1 1SEP102111R0405 XUBM 2 1SEP102112R0405 XUBM 3 1SEP102113R0405

InLine

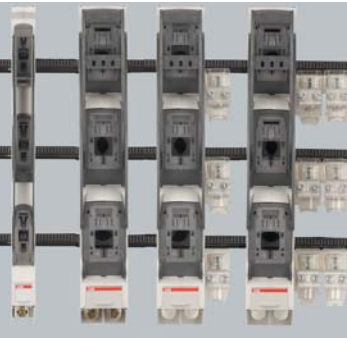
Fuse Switches

Apparatus and Accessories (continued)



XUBM 1pole-Z fuse switch disconnecter

	XLBM00-1P-Z	XLBM1/2/3-1P-Z	XLBM1/2/3-1P-ZS	XLBM1/2/3-1P-Z2S
Fuse link	NH00	NH1/2/3	NH1/2/3	NH1/2/3
Rated current	160 A	250 A 400 A 630 A	250 A 400 A 630 A	250 A 400 A 630 A
Module width	50 mm	100 mm	150 mm	208
Cable Al / Cu mm ²	1,5 - 95	95 - 240	50 - 300	2 x 50 - 300
Cable terminal	3 x M8	3 x M12	Clamps	Clamps
Order code	1SEP102140R0201	XLBM1 1SEP102141R0201 XLBM2 1SEP102142R0201 XLBM3 1SEP102143R0201	XLBM1 1SEP102141R0401 XLBM2 1SEP102142R0401 XLBM3 1SEP102143R0401	XLBM1 1SEP102141R0501 XLBM2 1SEP102142R0501 XLBM3 1SEP102143R0501



XUBM 3pole-Z fuse switch disconnecter

	XLBM00-3P-Z	XLBM1/2/3-3P-Z	XLBM1/2/3-3P-ZS	XLBM1/2/3-3P-Z2S
Fuse link	NH00	NH1/2/3	NH1/2/3	NH1/2/3
Rated current	160 A	250 A 400 A 630 A	250 A 400 A 630 A	250 A 400 A 630 A
Module width	50 mm	100 mm	150 mm	208 mm
Cable Al / Cu mm ²	1,5 - 95	95 - 240	50 - 300	2 x 50 - 300
Cable terminal	3 x M8	3 x M12	Clamps	Clamps
Order code	1SEP102140R0221	XLBM1 1SEP102141R0221 XLBM2 1SEP102142R0221 XLBM3 1SEP102143R0221	XLBM1 1SEP102141R0421 XLBM2 1SEP102142R0421 XLBM3 1SEP102143R0421	XLBM1 1SEP102141R0521 XLBM2 1SEP102142R0521 XLBM3 1SEP102143R0521

InLine

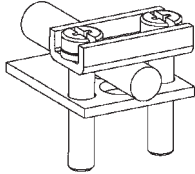
Fuse Switches

Apparatus and Accessories (continued)

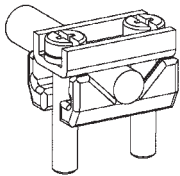
Cable termination

Type of clamp/bolt	Conductor cross section min-max				Torque (Nm)	Order code
	Conductor flexible mm ²	Rm/Sm mm ²	Re/Se mm ²			

XLBM / XUBM00

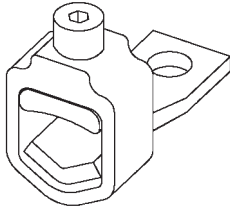


Bridge Clamp (BC)	1,5 – 50	1,5 – 50	1,5 – 50	3,5	1SEP407733R0001
-------------------	----------	----------	----------	-----	-----------------

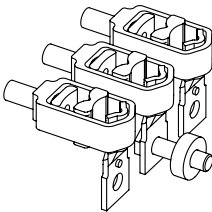


Single Prism Clamp (SPC)	1,5 – 95	1,5 – 95	1,5 – 95	3,5	1SEP407732R0005
--------------------------	----------	----------	----------	-----	-----------------

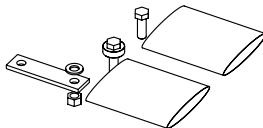
XLBM / XUBM1/2/3



V-clamp kit	95 – 240	Rm: 16 - 35 + 50 - 185	Re: 16 - 70 + 70 - 150	25	1SEP304446R0001
		Sm: 35 - 50 + 70 - 240	Se: 35 - 70 + 95 - 300		



Double V-clamp kit	2 x 95 – 240	Rm: 2 x 50 - 185	Re: 2 x 70 240	25	1SEP304457R0001
		Sm: 2 x 95 - 240	Se: 2 x 120 - 300		



Double cable lug kit	2 x 95 – 240	2 x 70 – 240	2 x 70 – 240	25	1SEP304502R0001
----------------------	--------------	--------------	--------------	----	-----------------

InLine

Fuse Switches

Ordering Details

XUBM / XLBM

Order number	Type designation	Description	Weight unit/kg
Fuse rail - XUBM			
1SEP102110R0101	XUBM00	160A incl. 3M8	1,5
1SEP101836R0001	XUBM00-100	160A 100mm busbardist. incl. 3M8	1,0
1SEP102100R0101	XUBM00-R	160A wo. contact shrouds, incl. 3M8	1,3
1SEP102111R0101	XUBM1	250A incl. 3M12	2,9
1SEP102101R0101	XUBM1-R	250A wo. contact shrouds, incl. 3M12	2,5
1SEP102112R0101	XUBM2	400A incl. 3M12	3,4
1SEP102102R0101	XUBM2-R	400A wo. contact shrouds, incl. 3M12	3,1
1SEP102113R0101	XUBM3	630A incl. 3M12	3,9
1SEP102103R0101	XUBM3-R	630A wo. contact shrouds, incl. 3M12	3,6

Fuse switch disconnecter - XLBM 1pole

1SEP102140R0101	XLBM00-1P	160A 1 pole, incl. 3M8	2,2
1SEP102140R0111	XLBM00-1P-EFM	160A 1pole, incl. EFM, incl. 3M8	2,3
1SEP102141R0101	XLBM1-1P	250A 1 pole, incl. 3M12	4,2
1SEP102141R0111	XLBM1-1P-EFM	250A 1pole, incl. EFM, incl. 3M12	4,4
1SEP102142R0101	XLBM2-1P	400A 1 pole, incl. 3M12	4,7
1SEP102142R0111	XLBM2-1P-EFM	400A 1pole, incl. EFM, incl. 3M12	4,9
1SEP102143R0101	XLBM3-1P	630A 1 pole, incl. 3M12	5,2
1SEP102143R0111	XLBM3-1P-EFM	630A 1pole, incl. EFM, incl. 3M12	5,4

Fuse switch disconnecter - XLBM 3pole

1SEP102140R0121	XLBM00-3P	160A 3pole, incl. 3M8	2,3
1SEP101818R0001	XLBM00-3P-100	160A 3pole, 100mm busbardist. incl. 3M8	1,6
1SEP102140R0131	XLBM00-3P-EFM	160A 3pole, incl. EFM, incl. 3M8	2,4
1SEP102141R0121	XLBM1-3P	250A 3pole, incl. 3M12	4,3
1SEP102141R0131	XLBM1-3P-EFM	250A 3pole, incl. EFM, incl. 3M12	4,5
1SEP102142R0121	XLBM2-3P	400A 3pole, incl. 3M12	4,8
1SEP102142R0131	XLBM2-3P-EFM	400A 3pole, incl. EFM, incl. 3M12	5,0
1SEP102143R0121	XLBM3-3P	630A 3pole, incl. 3M12	5,3
1SEP102143R0131	XLBM3-3P-EFM	630A 3pole, incl. EFM, incl. 3M12	5,5



XUBM2



XLBM2-1P



XLBM2-3P

InLine

Fuse Switches

Ordering Details (continued)

XUBM / XLBM with hooked clamps for IP20 Z- busbar systems



XUBM2-Z



XLBM2-3P-ZS



FLS 160



BZ 400A/1201

Order number	Type designation	Description	Weight unit/kg
Fuse rail - XUBM with hooked clamp (Z)			
1SEP102110R0201	XUBM00-Z	160A w. hooked clamp, incl. 3M8	1,7
1SEP102111R0201	XUBM1-Z	250A w. hooked clamp, incl. 3M12	3,2
1SEP102111R0405	XUBM1-ZS	250A w. hooked clamp, side connection, incl. 3 clamps	3,2
1SEP102112R0201	XUBM2-Z	400A w. hooked clamp, incl. 3M12	3,8
1SEP102112R0405	XUBM2-ZS	400A w. hooked clamp, side connection, incl. 3 clamps	3,7
1SEP102113R0201	XUBM3-Z	630A w. hooked clamp, incl. 3M12	4,2
1SEP102113R0405	XUBM3-ZS	630A w. hooked clamp, side connection, incl. 3M12	4,1

Fuse switch disconnecter - XLBM 1pole with hooked clamp (Z)			
1SEP102140R0201	XLBM00-1P-Z	160A 1pole, w. hooked clamp, incl. 3M8	2,4
1SEP102140R0211	XLBM00-1P-EFM-Z	160A 1 pole, incl. EFM, w. hooked clamp, incl. 3M8	2,5
1SEP102141R0201	XLBM1-1P-Z	250A 1pole, w. hooked clamp, incl. 3M12	4,5
1SEP102141R0211	XLBM1-1P-EFM-Z	250A 1pole, incl. EFM, w. hooked clamp, incl. 3M12	4,7
1SEP102141R0401	XLBM1-1P-ZS	250A 1pole, w. hooked clamp, side connection, incl. 3 clamps	4,5
1SEP102141R0501	XLBM1-1P-Z2S	250A 1pole, w. hooked clamp, double side connection, incl. 6 clamps	5,8 6,3
1SEP102143R0201	XLBM3-1P-Z	630A 1pole, w. hooked clamp, incl. 3M12	5,5
1SEP102143R0211	XLBM3-1P-EFM-Z	630A 1pole, incl. EFM, w. hooked clamp, incl. 3M12	5,7
1SEP102143R0401	XLBM3-1P-ZS	630A 1pole, w. hooked clamp, side connection, incl. 3 clamps	5,4
1SEP102143R0501	XLBM3-1P-Z2S	630A 1pole, w. hooked clamp, double side connection, incl. 6 clamps	6,7

Fuse switch disconnecter - XLBM 3pole with hooked clamp (Z)			
1SEP102140R0221	XLBM00-3P-Z	160A 3pole, w. hooked clamp, incl. 3M8	2,5
1SEP102140R0231	XLBM00-3P-EFM-Z	160A 3pole, incl. EFM, w. hooked clamp, incl. 3M8	2,6
1SEP102141R0221	XLBM1-3P-Z	250A 3pole, w. hooked clamp, incl. 3M12	4,6
1SEP102141R0231	XLBM1-3P-EFM-Z	250A 3pole, incl. EFM, w. hooked clamp, incl. 3M12	4,8
1SEP102141R0421	XLBM1-3P-ZS	250A 3pole, w. hooked clamp, side connection, incl. 3 clamps	4,6
1SEP102141R0521	XLBM1-3P-Z2S	250A 3pole, w. hooked clamp, double side connection, incl. 6 clamps	5,8 6,3
1SEP102142R0221	XLBM2-3P-Z	400A 3pole, w. hooked clamp, incl. 3M12	5,2
1SEP102142R0231	XLBM2-3P-EFM-Z	400A 3pole, incl. EFM, w. hooked clamp, incl. 3M12	5,4
1SEP102142R0421	XLBM2-3P-ZS	400A 3pole, w. hooked clamp, side connection, incl. 3 clamps	5,1
1SEP102142R0521	XLBM2-3P-Z2S	400A 3pole, w. hooked clamp, double side connection, incl. 6 clamps	6,3
1SEP102143R0221	XLBM3-3P-Z	630A 3pole, w. hooked clamp, incl. 3M12	5,6
1SEP102143R0231	XLBM3-3P-EFM-Z	630A 3pole, incl. EFM, w. hooked clamp, incl. 3M12	5,8
1SEP102143R0421	XLBM3-3P-ZS	630A 3pole, w. hooked clamp, side connection, incl. 3 clamps	5,5
1SEP102143R0521	XLBM3-3P-Z2S	630A 3pole, w. hooked clamp, double side connection, incl. 6 clamps	6,7

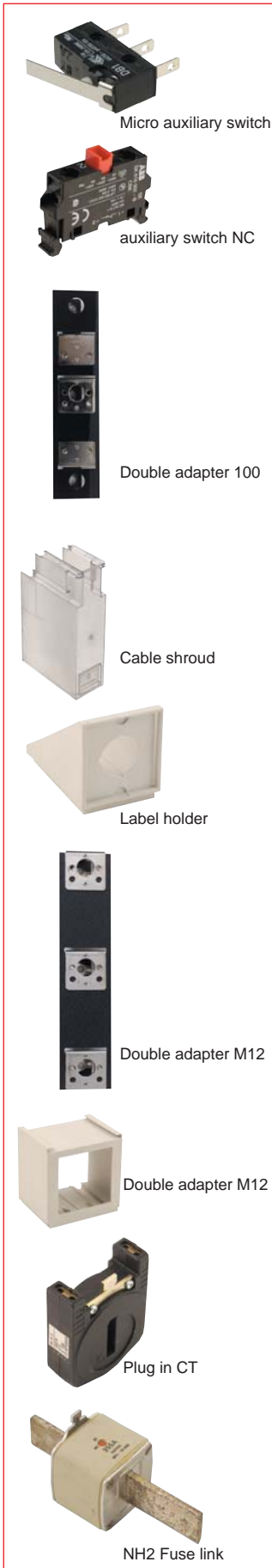
Modules with hooked clamp (Z)			
1SEP731800R0001	LB 160	160A load break switch	
1SEP731802R0001	LB250	250A load break switch	
1SEP731804R0001	LB 400	400A load break switch	
1SEP731806R0001	LB 630	630A load break switch	
1SEP731808R0001	FLS 160	160A switch fuse	
1SEP731810R0001	FLS 250	250A switch fuse	
1SEP731812R0001	FLS 400	400A switch fuse	
1SEP731814R0001	FLS 630	630A switch fuse	
1SEP731816R0001	LS 160	160A load break switch-sectionallizer	
1SEP731818R0001	LS 250	250A load break switch-sectionallizer	
1SEP731820R0001	LS 400	400A load break switch-sectionallizer	
1SEP731822R0001	LS 630	630A load break switch-sectionallizer	
1SEP731824R0001	FSS 160	160A switch fuse -sectionallizer	
1SEP731826R0001	FSS 250	250A switch fuse -sectionallizer	
1SEP731828R0001	FSS 400	400A switch fuse -sectionallizer	
1SEP731830R0001	FSS 630	630A switch fuse -sectionallizer	
1SEP731530R0001	LDL 63/3	63A diazed unit w. 3 groups	
1SEP731594R0001	AKZD 95	Direct incomer	0,1
1SEP731521R0001	AKKZ 300	Direct incomer	0,4

Kit of IP20 Z-busbars			
1SEP824063R0001	BZ 400A/284	400A/284mm, incl. IP20 busbars&holders	
1SEP824064R0001	BZ 400A/536	400A/536mm, incl. IP20 busbars&holders	
1SEP824065R0001	BZ 400A/851	400A/851mm, incl. IP20 busbars&holders	
1SEP824066R0001	BZ 400A/1201	400A/1201mm, incl. IP20 busbars&holders	
1SEP824067R0001	BZ 630A/284	630A/284mm, incl. IP20 busbars&holders	
1SEP824068R0001	BZ 630A/536	630A/536mm, incl. IP20 busbars&holders	
1SEP824069R0001	BZ 630A/851	630A/851mm, incl. IP20 busbars&holders	
1SEP824070R0001	BZ 630A/1201	630A/1201mm, incl. IP20 busbars&holders	

InLine

Fuse Switches

Ordering Details (continued)



Accessories

Order number	Type designation	Description	Weight unit/kg
Common accessories			
NHSN950001P0006	Insulated hexagon key NV6		0,1
1SEP407742R0001	Micro auxiliary switch	6A/150V	0,01
1SEP407742R0002	Auxiliary switch NC	10A/690V	0,02
1SEP407742R0003	Auxiliary switch NO	10A/690V	0,02
Accessories XUBM/XLBM00-100			
1SEP304058R0001	00-100 Cable shroud for clamps, H=106mm		0,02
1SEP304061R0001	00-100 Cable shroud extended for cable lugs, H=150mm		0,05
1SEP304068R0001	00-100 Label holder		0,01
1SEP304105R0001	00-100 Phase barrier kit	Kit incl. 3 pcs.	0,05
1SEP304056R0001	00-100 Prism clamp kit	Kit incl. 3 pcs.	0,1
1SEP304060R0001	00-100 Micro switch		0,01
1SEP304064R0001	00-100 Single adapter for 60mm busbar distance		0,3
1SEP304066R0001	00-100 Single adapter 100 to 185mm busbar dist.		0,4
1SEP304065R0001	00-100 Double adapter 100 to 185mm busbar dist.		0,7
1SEP304059R0001	00-100 Hooked clamp	Kit incl. 3 pcs.	0,03
Accessories XUBM/XLBM00			
1SEP201543R0001	XUBM00 Fuse protection cover		0,3
1SEP304442R0001	XUBM00 Phase barrier kit	Kit incl. 2 pcs.	0,05
1SEP408124R0001	XUBM00 Cable shroud		0,2
1SEP408126R0001	XLBM00 Cable shroud, H=185mm		0,15
1SEP408128R0001	XLBM00 Cable shroud short, H=64 mm		0,1
1SEP408139R0001	XLBM00 Label holder		0,1
1SEP408141R0001	XLBM00 A-meter house for A-meter 48x48 mm		0,05
NHSN714003P1150	Max A-meter QB48, 0-150-180/5A		0,1
1SEP408149R0001	CT rear side inst. kit 160/5A 2,5VA cl.1		0,6
1SEP407733R0001	00 Bridge clamp (3BC) 1,5-50mm2	Kit incl. 3 pcs.	0,04
1SEP407732R0005	00 Single prism clamp (3PC) 1,5-95mm2	Kit incl. 3 pcs.	0,09
1SEP304072R0001	00 Single adapter M12 to M8 for 185mm busbar dist.		0,4
1SEP304071R0001	00 Double adapter M12 to M8 for 185mm busbar dist.		0,7
1SEP304069R0001	00 Spare way cover		0,2
Accessories for XUBM/XLBM 1, 2, 3			
1SEP201499R0001	XUBM1,2,3 Fuse protection cover		0,35
1SEP304395R0001	XUBM1,2,3 Phase barrier kit	Kit incl. 2 pcs.	0,15
1SEP408125R0001	XUBM1,2,3 Cable shroud		0,25
1SEP408127R0001	XLBM1,2,3 Cable shroud		0,2
1SEP408140R0001	XLBM1,2,3 Label holder		0,1
1SEP408142R0001	XLBM1,2,3 Double adapter M12 for A-meter 72x72 mm		0,05
NHSN714004P2206	Max A-meter QB72, 0-150-180/5A		0,2
NHSN714004P2210	Max A-meter QB72, 0-400-480/5A		0,2
NHSN714004P2212	Max A-meter QB72, 0-600-720/5A		0,2
1SEP408149R0002	CT rear side inst. kit 250A/5A 3,75VA cl.1	Kit incl. 3 CT's	1,3
1SEP408149R0003	CT rear side inst. kit 400A/5A 5VA cl.1	Kit incl. 3 CT's	1,3
1SEP408149R0004	CT rear side inst. kit 600A/5A 5VA cl.1	Kit incl. 3 CT's	1,3
1SEP408149R0005	CT rear side inst. kit 600A/5A 5VA cl.1		0,1
1SEP408149R0007	CT terminal inst. kit 250/5A 3,75VA cl.0.5	Kit incl. 1 CT	0,6
1SEP408149R0008	CT terminal inst. kit 400/5A 5VA cl.1	Kit incl. 1 CT	0,6
1SEP408149R0009	CT terminal inst. kit 600/5A 5VA cl.1	Kit incl. 1 CT	0,6
1SEP408149R0010	CT terminal inst. kit 600/5A 5VA cl.0.5	Kit incl. 1 CT	0,6
NHPL046270R0002	Plug in A-meter, front cover inst 100-200/5A		0,2
NHPL046270R0001	Plug in A-meter, front cover inst. 200-400/5A		0,2
NHSN718050P2525	Plug in CT for front cover inst. A-meter 200/5A 3,5VA cl.3		0,1
NHSN718050P2540	Plug in CT for front cover inst. A-meter 400/5A 5 VA cl.3		0,1
NHPL046265R0001	NH2 Fuse link 400V/100A for plug in CT		0,5
NHPL046266R0001	NH2 Fuse link 400V/125A for plug in CT		0,5
NHPL046267R0001	NH2 Fuse link 400V/160A for plug in CT		,5
NHPL046268R0001	NH2 Fuse link 400V/200A for plug in CT		0,5
NHPL046269R0001	NH2 Fuse link 400V/224A for plug in CT		0,5
NHPL046272R0001	NH2 Fuse link 400V/250A for plug in CT		0,5
NHPL046273R0001	NH2 Fuse link 400V/315A for plug in CT		0,5
NHPL046274R0001	NH2 Fuse link 400V/335A for plug in CT		0,5
NHPL046275R0001	NH2 Fuse link 400V/400A for plug in CT		0,5
1SEP407946R0001	XLBM1,2,3 LED Fuse indicator (LFM)	Kit incl. 3 pcs.	0,02
NHSN722068P0002	1,2,3 Huckepack	Temporary supply outlet	0,25
1SEP304446R0001	1,2,3 V-clamp kit	Kit incl. 3 pcs.	0,45
1SEP304457R0001	1,2,3 Double V-clamp kit	Kit incl. 3 pcs.	0,45
1SEP304502R0001	1,2,3 Double cable lug kit	Kit incl. 3 pcs.	0,45
1SEP304080R0001	1,2,3 Spare way cover		0,31