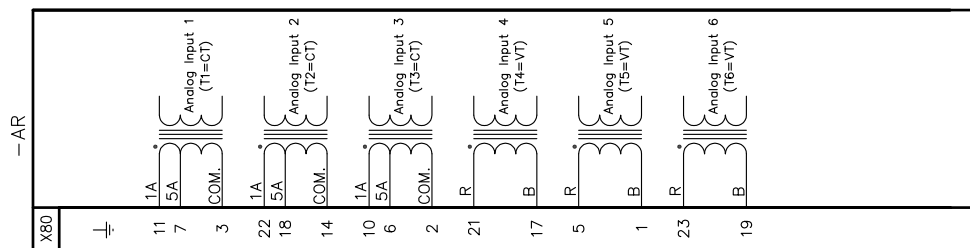
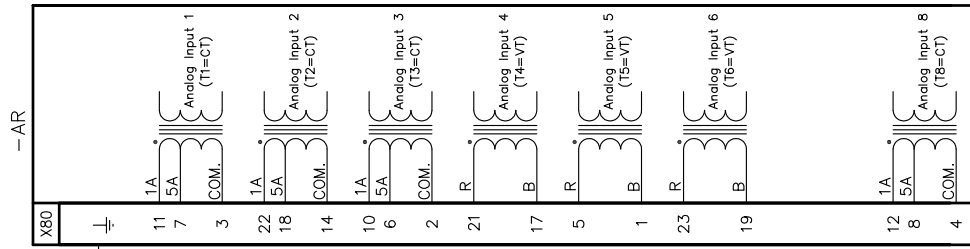


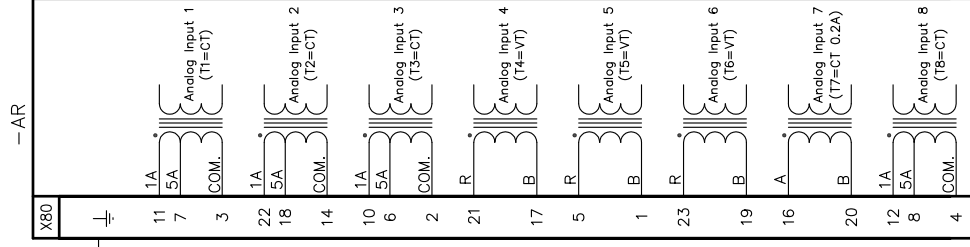
ANALOG INPUT MODULES



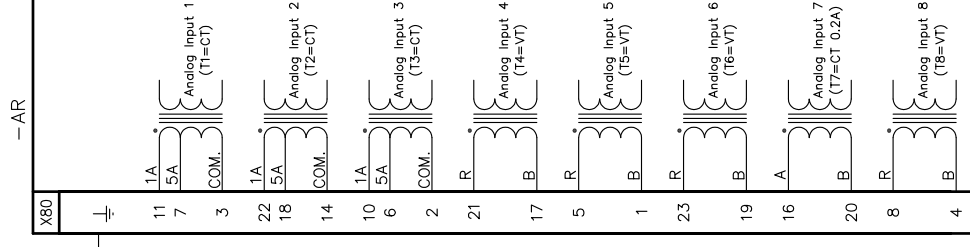
ANALOG INPUT
1VCF750170R0801



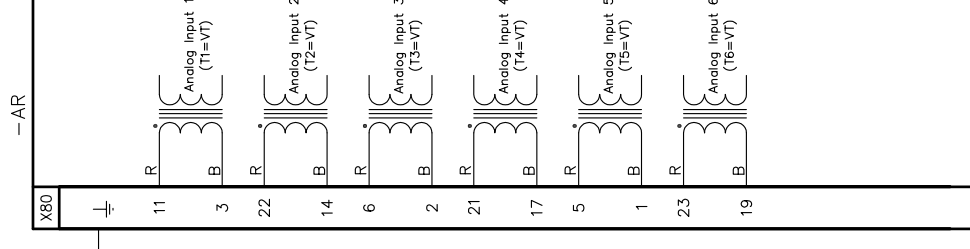
ANALOG INPUT
1VCF750170R0802



ANALOG INPUT
1VCF750170R0803



ANALOG INPUT
1VCF750170R0804



ANALOG INPUT
1VCF750170R0805

ANALOG INPUT
TECHNICAL DATA:

CT1A—5A
 - Current input: 1A or 5A nominal input current
 Thermal overload: 4 h continuously
 Ith: 100 In 1 sec.
 Idyn: 250 In 10 ms.
 - Galvanic insulation: 2kV AC CM/CD
 - Dielectric Strength: 5kV 1,2-50us pulse
 - Connector type : COMPEL P100.029.099

CT 0.2A

- Current input: 0.2A current input
 Thermal overload: 4 Amp continuously
 Ith: 100 Amp 1 sec.
 Idyn: 250 Amp 10 ms.
 - Galvanic insulation: 2kV AC CM/CD
 - Dielectric Strength: 5kV 1,2-50us pulse
 - Connector type : COMPEL P100.029.099

VT 100-110V

- Voltage input : 100V nom
 Galvanic insulation: 2kV AC CM/CD
 - Dielectric Strength: 5kV 1,2-50us pulse
 - Connector type : COMPEL P100.029.099

SENSOR

- Voltage input : 2Vrms/150mV
 - Connector type : CPE 237-19291-061

FEMALE CONNECTORS ACCORDING TO
 ABB T&D 1VCF750142804/805/806
 /807/808

MULTIFUNCTION PROTECTION AND SWITCHGEAR
 CONTROL UNIT MODEL REF542plus
 CONNECTIONS DIAGRAM

Ord. Akk. Conferma	Item Pos.	Origin Origine	Prep. Dis.	BRESCIANI 04.04.15	Resp. Dep. Uff. Resp.	GEMME 04.04.15	Title Titolo	CONNECTIONS DIAGRAM	Lang. Lingua	E
We reserve all rights in this document and in the information contained therein. Reproduction, use or disclosure to third parties without express authority is strictly forbidden.			App. App.	DI MAIO 04.04.15	Take over. dep. Uff. Utilizz.		Apparatus Apparecchio		Scale Scala	
Ci riserviamo tutti i diritti connessi con il presente documento e con le informazioni in esso contenute. Riproduzione, utilizzo o disclosure a terzi in assenza di previa autorizzazione.			Rev. Mod.	E0109 03.08.06	E0245 04.04.14		REF542plus		Doc. N.° N.° Doc.	1VCF750170R0805
			ABB		ABB PT S.p.A.		1VCF750170R0805		4231678	