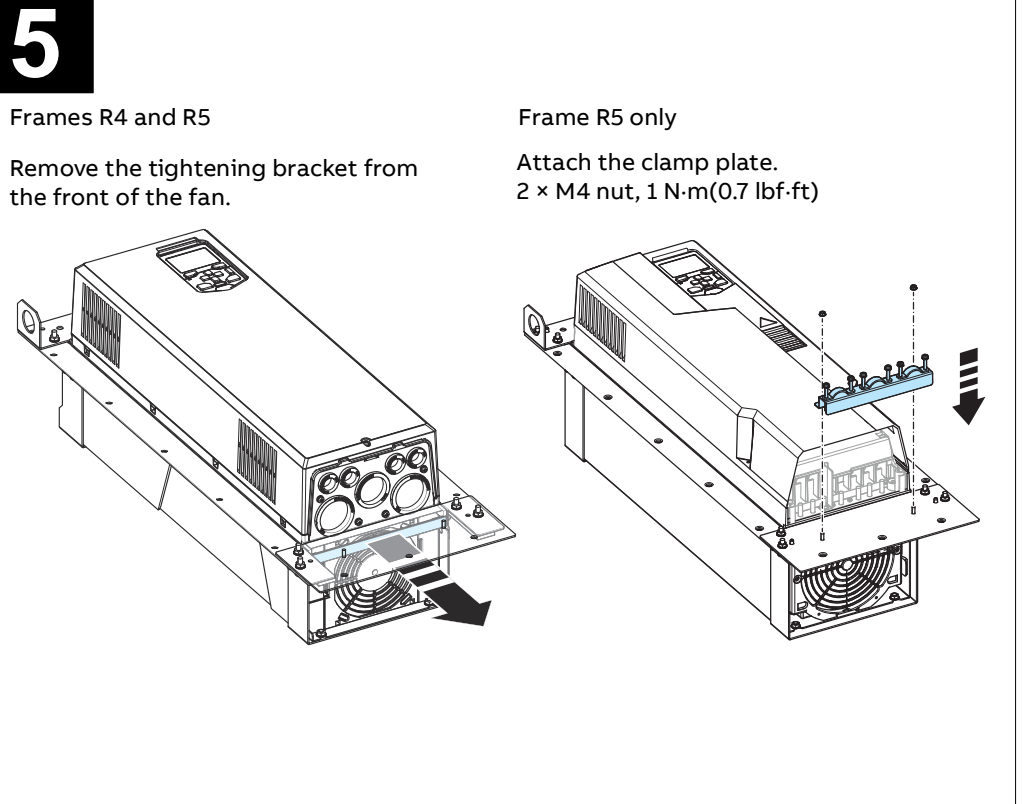
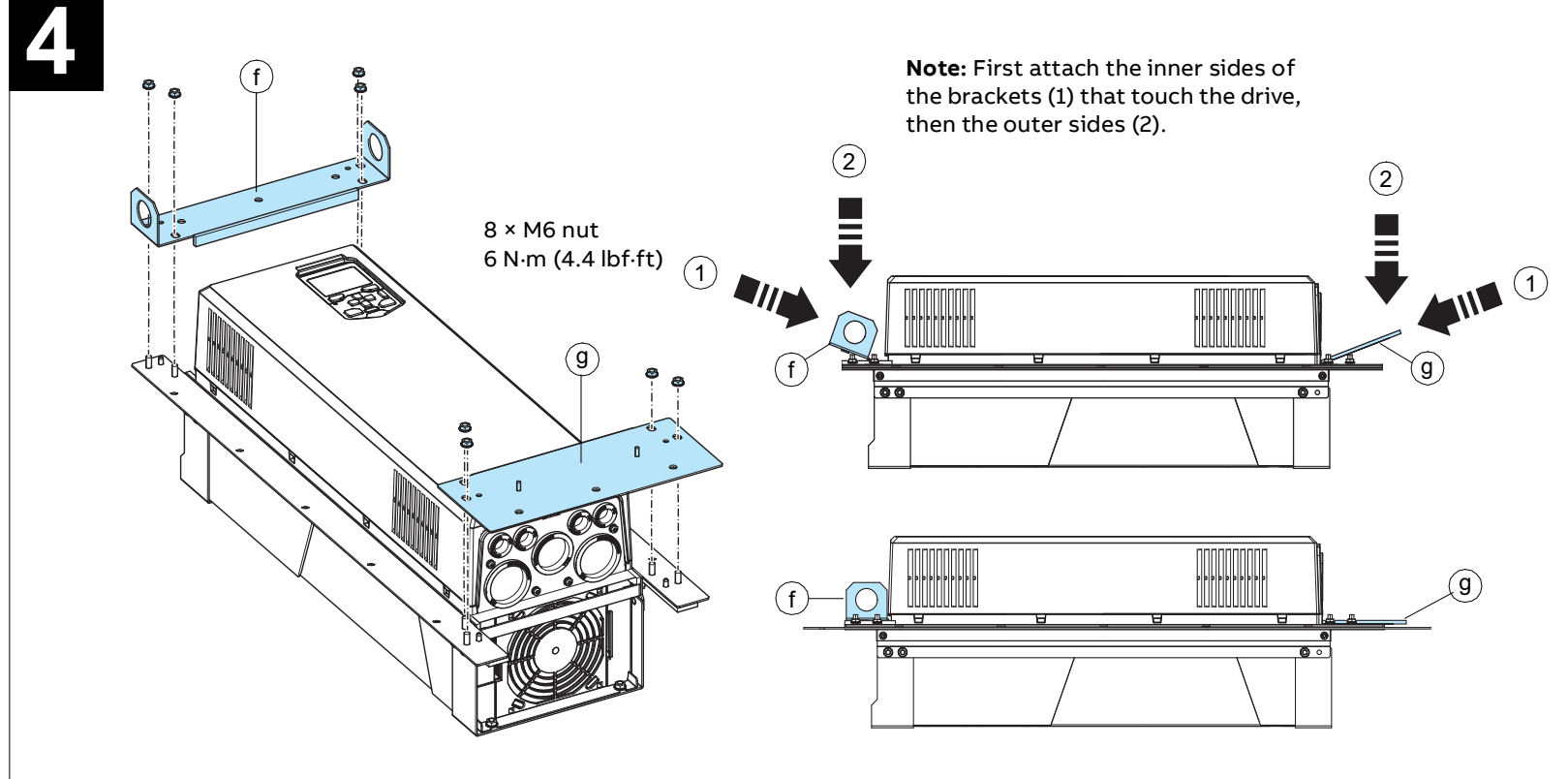
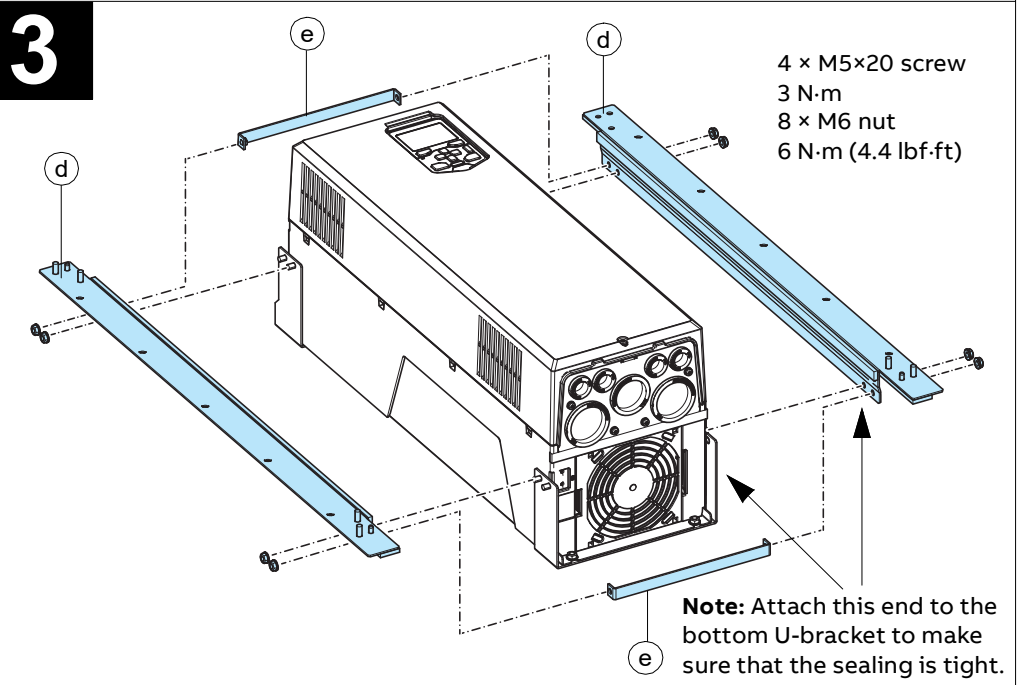
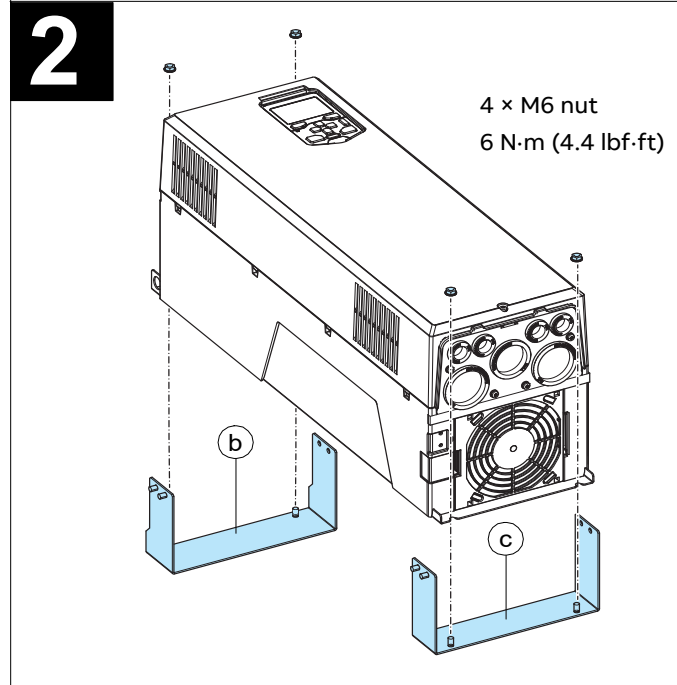
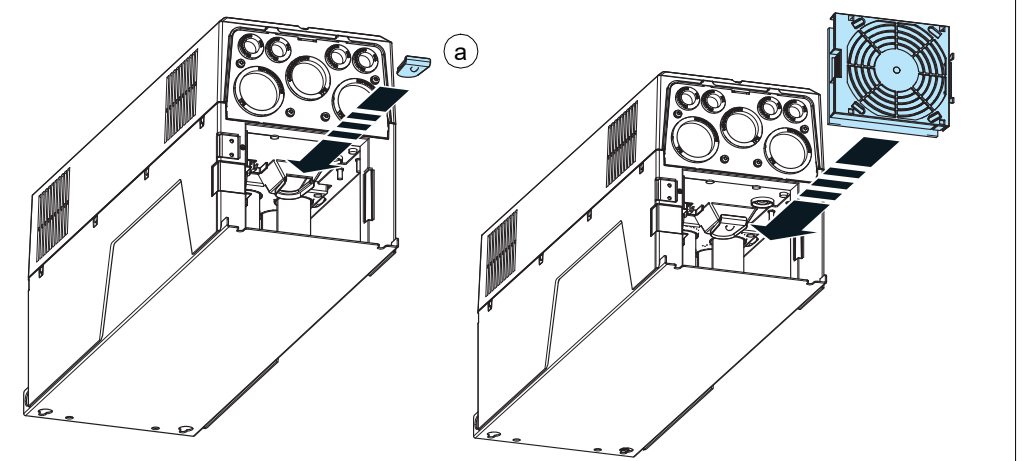
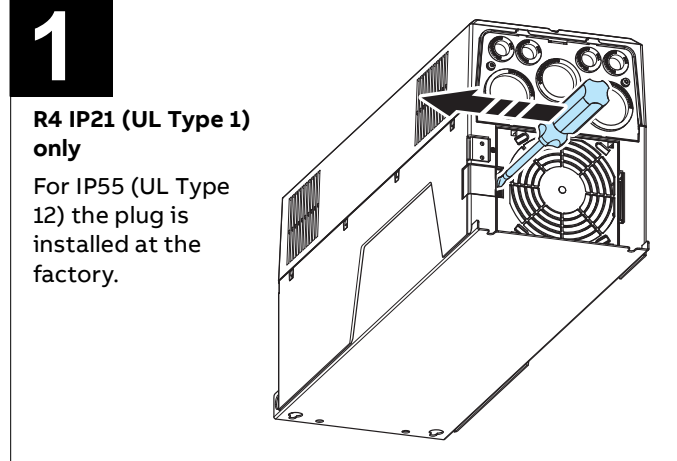
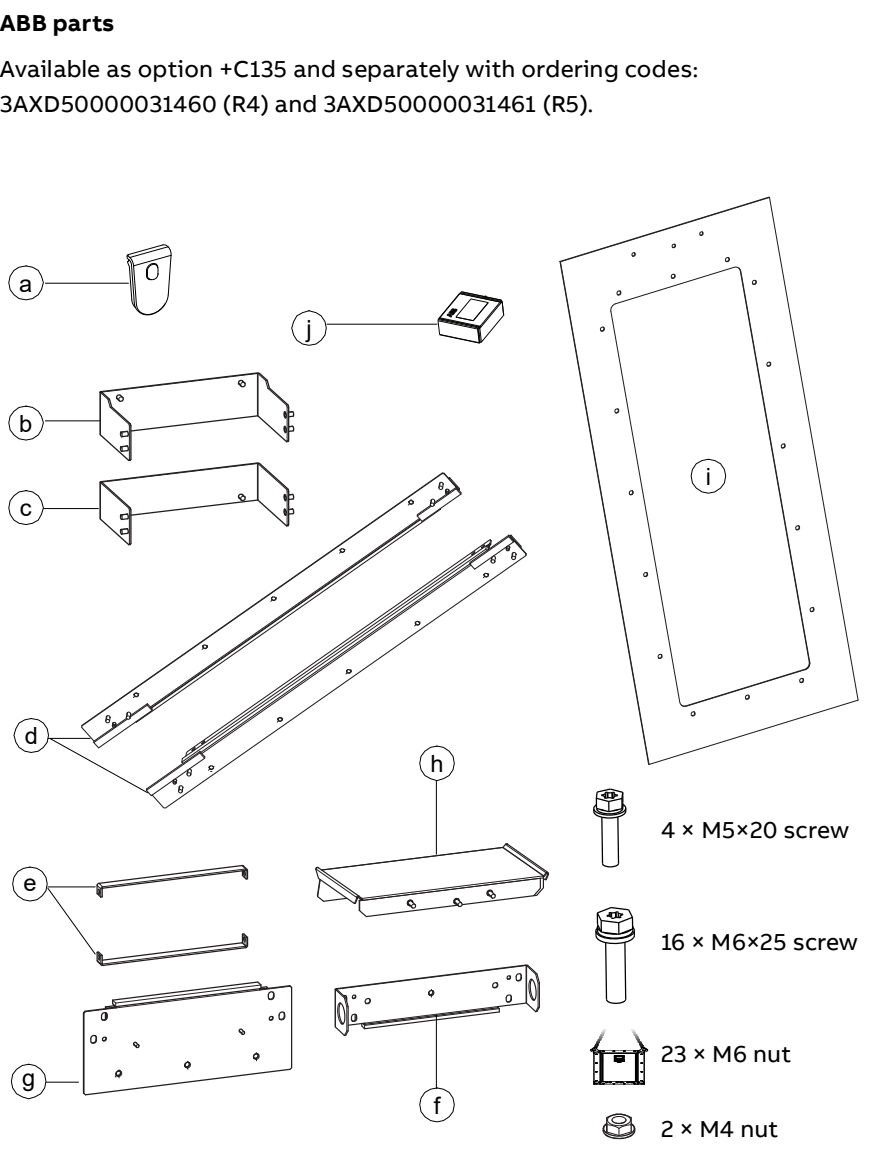
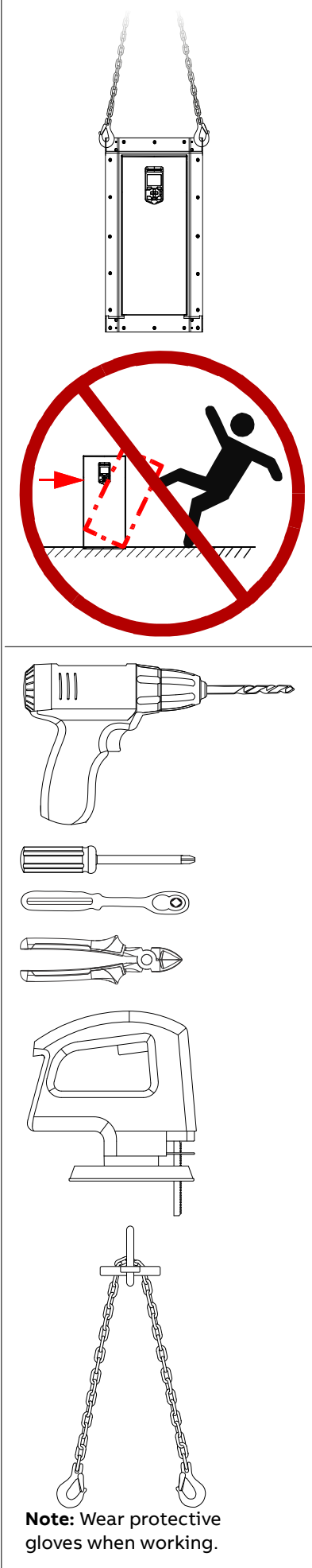


ACS580-01...+C135, ACH580-01...+C135 and ACQ580-01...+C135 frames R4 and R5 flange mounting kit quick installation guide



6

R4 IP21 (UL Type 1) only

Remove the control panel (a) and cover (b) to install the auxiliary fan (j). Cut off the protective plate from the fan slot (c) and install the fan (d). Make sure that the arrow on the fan points outwards. Connect the fan cable to FAN2. (e, f).

7

Drill holes for M6 Rivet or Kalei nuts. Consider the hole size for the nuts. Rivet/Kalei nuts are not included in the delivery.

Note: The mounting templates are different (size, number and position of holes) for different frame sizes.

8

UL Type 12 only

UL Type 12 is fulfilled on the drive backside when the flange and hood are installed. Hood is not required for IP55.

9

10

11

12

13

For dimensions, see the mounting template delivered with the flange mounting kit or ACS580-01...+C135, ACH580-01...+C135 and ACQ580-01...+C135 drives with flange mounting kit supplement (3AXD50000349821 [English]).

Go to www.abb.com/drives.

ACS580-01 manuals

ACH580-01 manuals

ACQ580-01 manuals