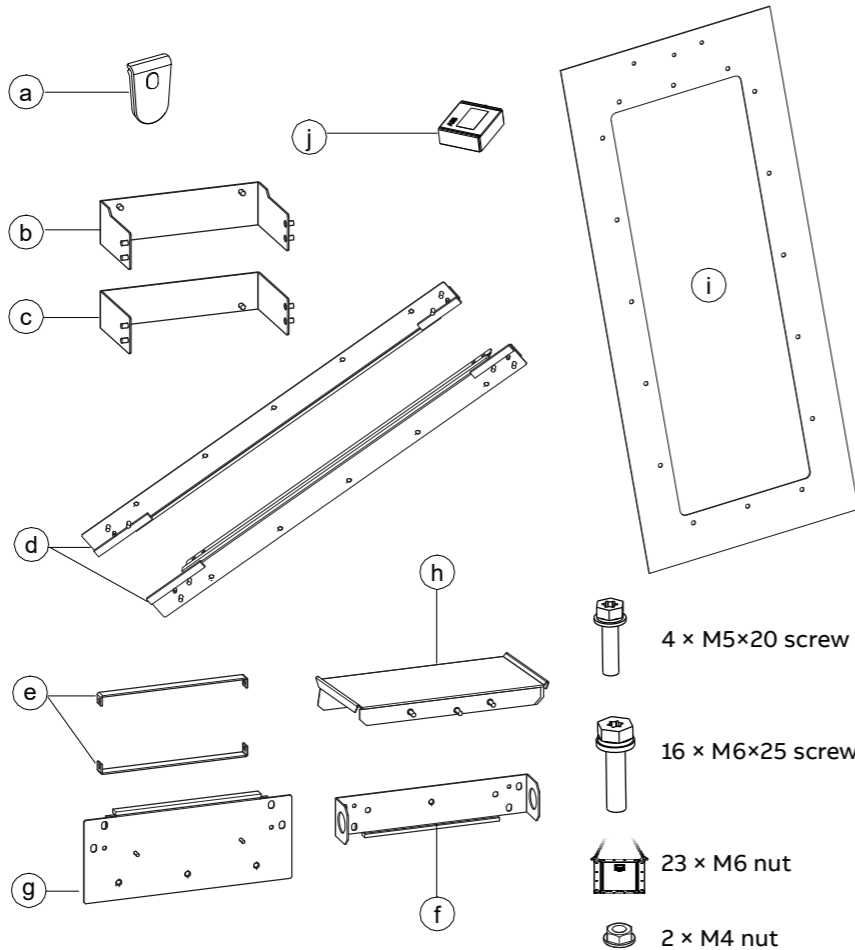


ACS580-01...+C135, ACH580-01...+C135 and ACQ580-01...+C135 frames R4 and R5 flange mounting kit quick installation guide

ABB parts

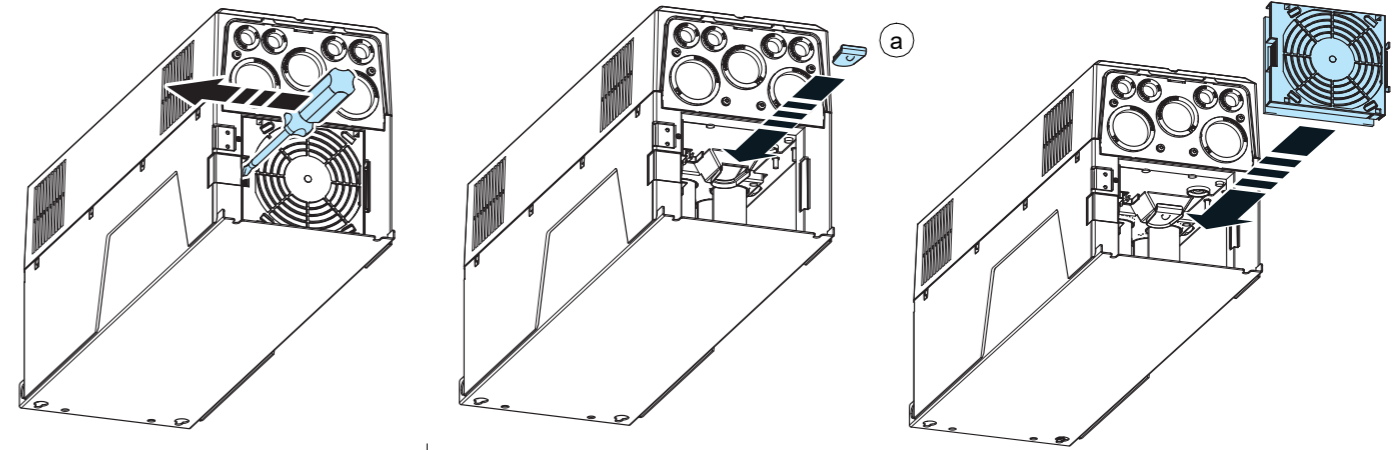
Available as option +C135 and separately with ordering codes:
3AXD5000031460 (R4) and 3AXD5000031461 (R5).



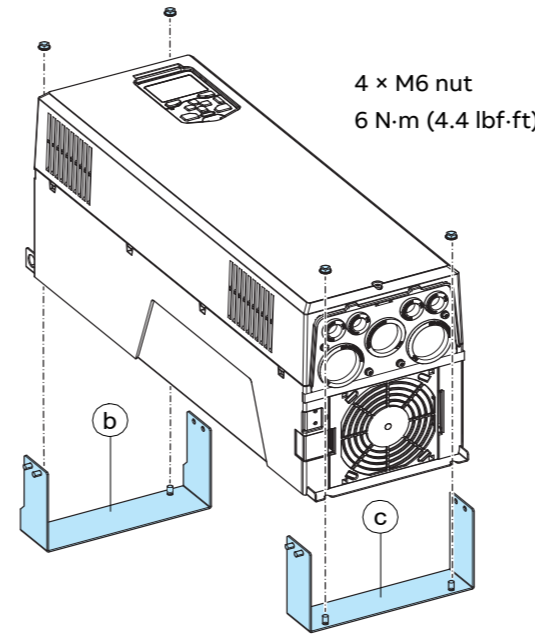
1

R4 IP21 (UL Type 1) only

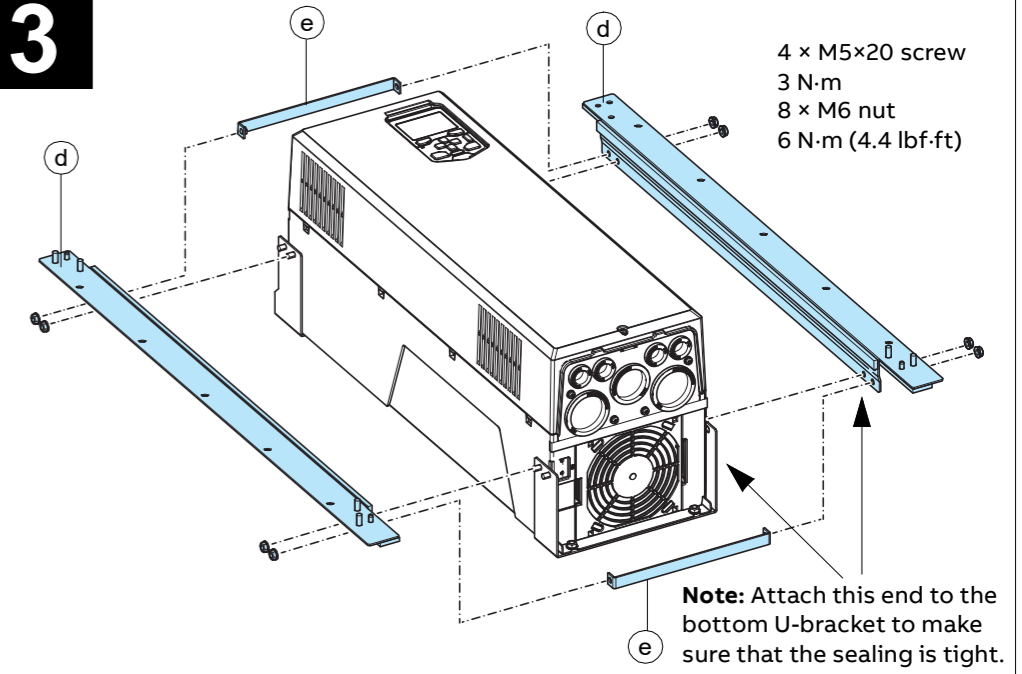
For IP55 (UL Type 12) the plug is installed at the factory.



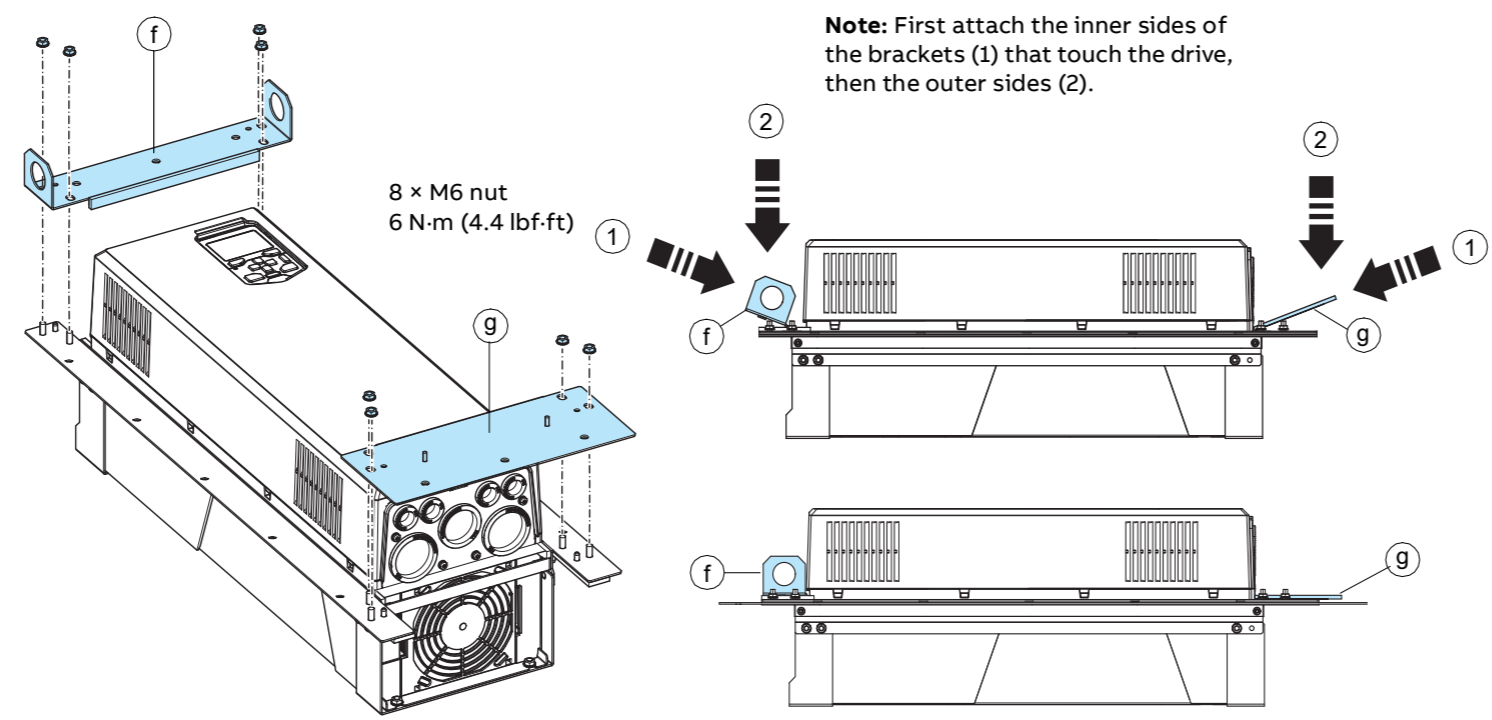
2



3



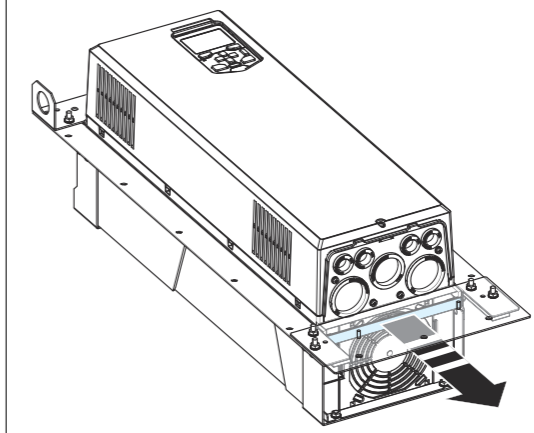
4



5

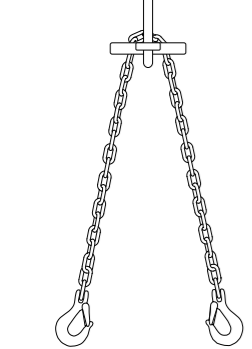
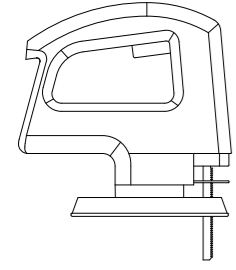
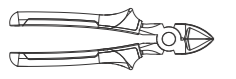
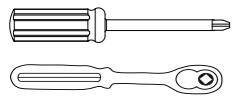
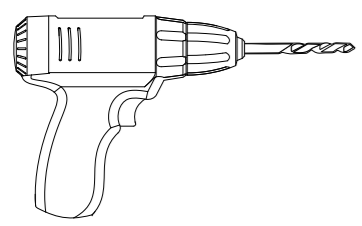
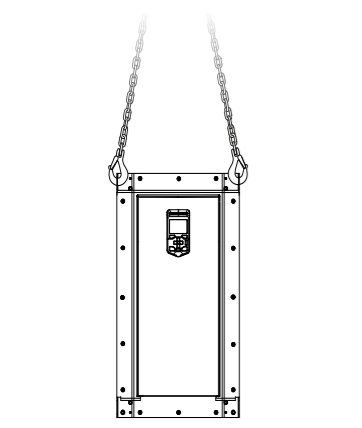
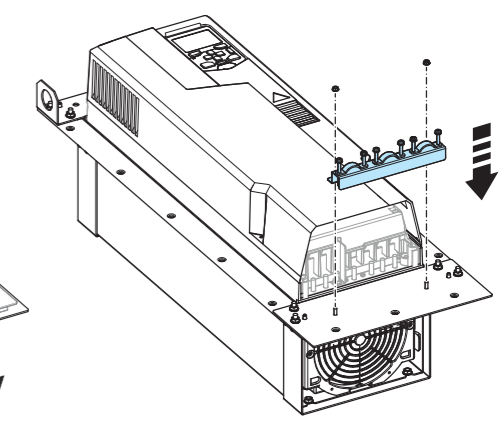
Frames R4 and R5

Remove the tightening bracket from the front of the fan.



Frame R5 only

Attach the clamp plate.
2 × M4 nut, 1 N·m(0.7 lbf·ft)



Note: Wear protective gloves when working.

