



INDUSTRY BROCHURE

Electrical products for OEMs

Highest reliability for continuous operation needs



A photograph of a modern train station platform. A red and white high-speed train is stopped at the platform. The platform has a glass and metal railing, a yellow tactile paving strip, and a blue information board. The station has a large, curved glass and metal roof structure.

Designed for each market needs & challenges

ABB simplifies the journey for OEM customers (original equipment manufacturers) like you across diverse markets.




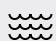
Our customized electrical solutions support you as panel builders, machine builders, and system integrators, enabling you to efficiently deliver world-class products and services.

Explore how our offerings meet the unique demands of your applications and markets.







**Each project
is unique in its
complexity**

Power & utilities

-  Utilities
-  Solar power
-  Wind power
-  Water & waste water

Transports

-  Rail
-  Marine
-  Automotive
-  Aerospace

Industries

- | | |
|---|---|
|  Manufacturing |  Healthcare |
|  Machinery |  Food & beverage |
|  Electronic |  Pharmaceutical |
|  Material handling |  Chemical |
|  Equipment & appliance |  Oil & gaz |
|  Agricultural |  Mining & metal |
|  Recreational |  Pulp & paper |

Designed for you



Reduce your project costs

Achieve savings in operation, space, labor, material, equipment and logistics **with ABB's total project cost reduction solutions.**



Speed up your projects

Save time during all phases of your projects **with ABB's sales force local support, specifications tools, easy to install products and ergonomic installation tools.**



Ensure continuous operation

Avoid downtime and costly service interruptions, increasing electrical system lifecycle and improving operating revenues **with ABB's products designed to provide long and reliable service, even in harsh, wet, moist, dusty, corrosive, ultraviolet light and extreme-temperature environments.**



Prioritize safety & protection

Ensure personnel safety, reduce the risk of injury & hazards, eliminate lightning interruptions and protect critical equipment, while preventing downtime **with ABB's high-quality products often exceeding standard requirements, identification systems and ergonomic tools.**



Stay ahead of competition

Keep up to date with new technologies **with ABB's teams constantly developing new innovations in more than 100 countries.**



Choose from a complete offering

Get high quality, maximum value and save on purchasing time **with ABB's extensive variety of product options from economical to highly sophisticated to meet all your needs at once.**



Save space

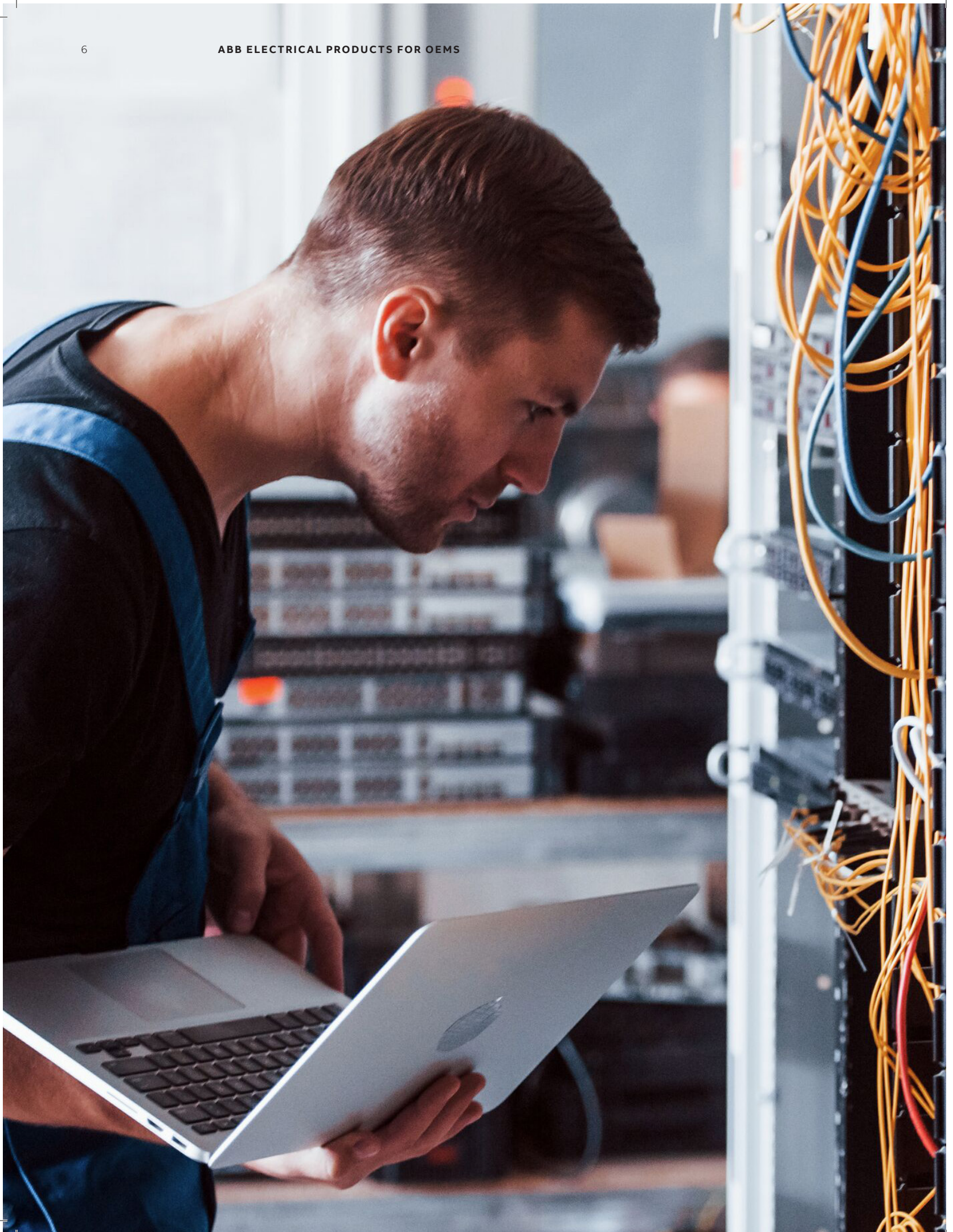
Maximize panel and machinery real estate, enhance wire management and reduce the size of your project **with ABB's space-saving and organization solutions.**



Optimize your logistics

Save space in reducing your electrical product inventory and spend less time managing it, while saving on operating costs **with ABB's versatile products replacing multiple existing SKUs with one.**

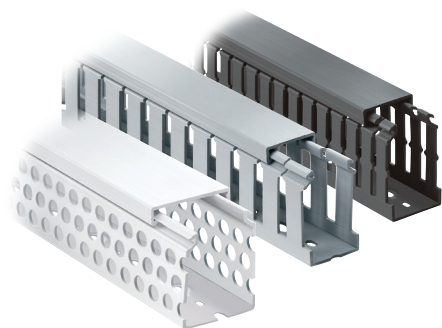




Wire and cable management

Optimize the space on your projects and ensure efficient operations with our comprehensive cable and wire management solutions. Designed for flexibility and reliability, our products help you organize and secure your cables with ease.

Ty-Duct
wiring duct systems



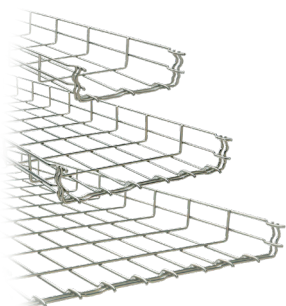
Ty-Rap and Catamount
fastening products



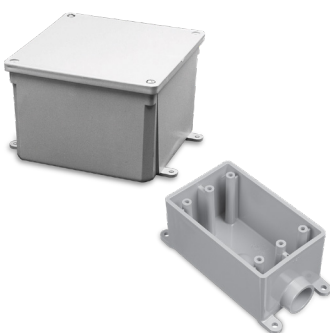
E-Z-Code
identification products



ExpressTray
steel wire basket trays



Carlton
nonmetallic enclosures



Ty-Duct® | Ty-Rap® | Catamount® | EZCODE® | ExpressTray® | Carlton®

Wire termination

Achieve secure and durable connections with our advanced wire termination solutions. Engineered for precision and reliability, our products guarantee high performance in every application.

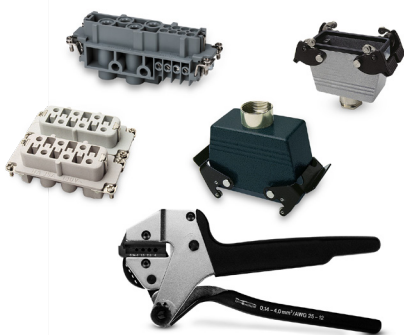
Sta-Kon and Spec-Kon wire termination products



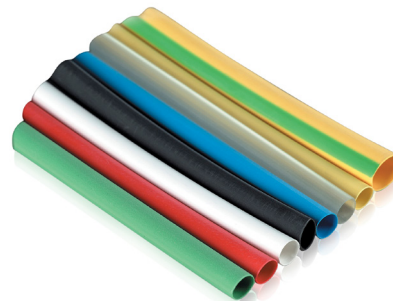
Marrette wire connectors



Pos-E-Kon industrial connectors



Shrink-Kon wire insulation



Connectivity, grounding and medium voltage

Ensure safety and stability with our robust grounding and bonding solutions. Our products provide effective grounding and bonding to protect your equipment and personnel from electrical faults and hazards and provide electrical continuity and reliability.

Blackburn grounding systems



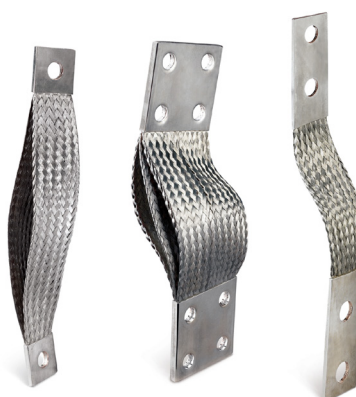
Blackburn compression connectors and Color-Keyed dies



Blackburn mechanical connectors



Boreal flexible braids



Blackburn®

Color-Keyed®

Boreal®

Cable protection

Protect your cables from environmental and mechanical damage with our superior cable protection systems. Built to withstand harsh conditions, our solution ensure the longevity and reliability of your cabling infrastructure.

PMA
nonmetallic flexible
conduits and fittings



T&B Fittings
fittings



T&B Liquidtight Systems
metallic conduits and
fittings



ABB
cable glands



Catamount
spiral wraps and cable sleeves



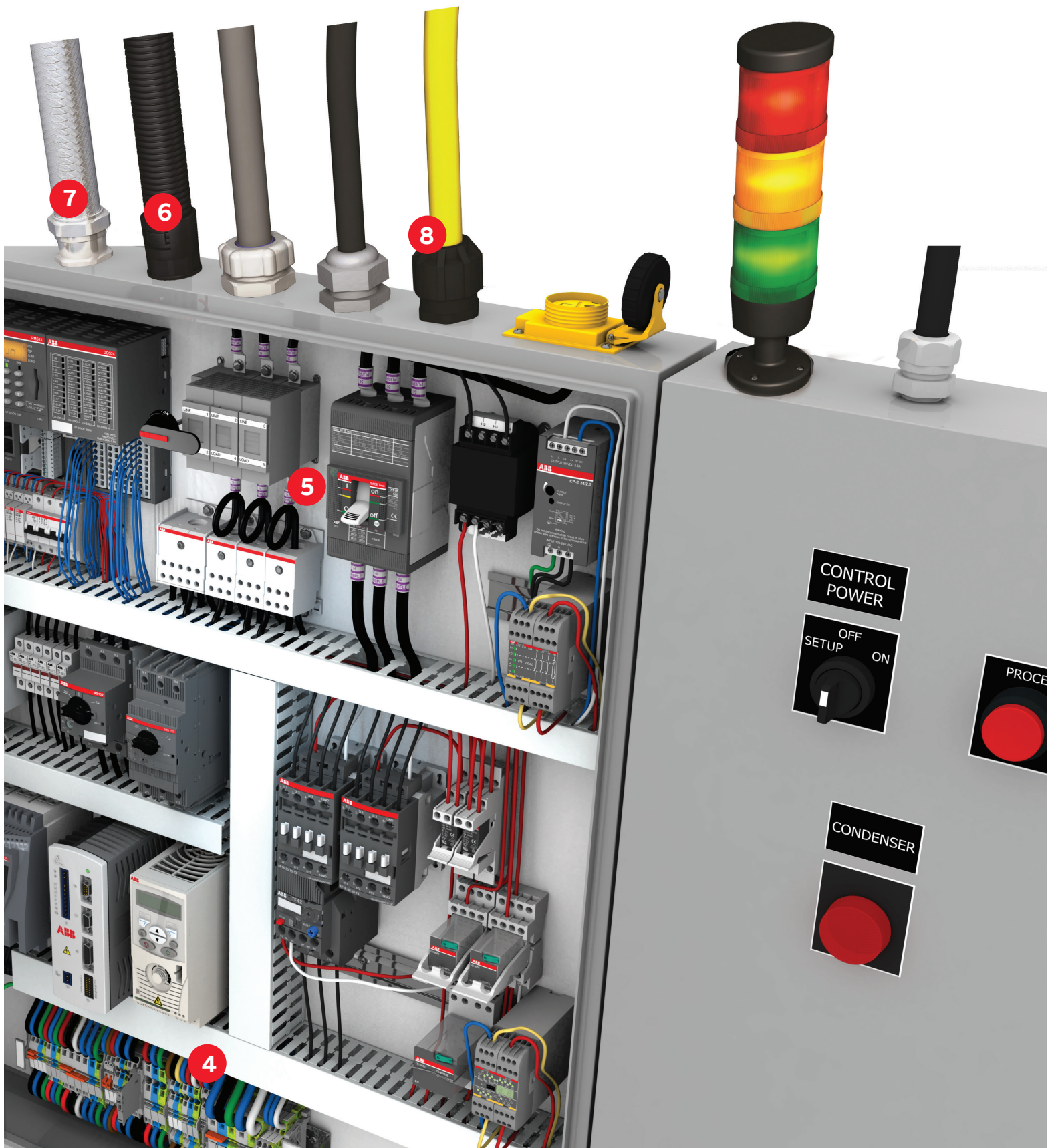


Control panels

With our world of electrical products, installation products, we offer a complete range of solutions for all panel building requirements, inside and outside your control panels.

- 1
Ty-Duct
wiring duct system
- 2
Catamount
cable ties
- 3
E-Z-Code
identification products
- 4
Sta-Kon
wire terminals
- 5
Blackburn
compression connectors
with Color-Keyed die
- 6
PMA nonmetallic flexible
conduit and fitting
- 7
Metallic T&B fitting
- 8
Cable Gland
industrial fitting
- 9
Catamount
protective sleeve

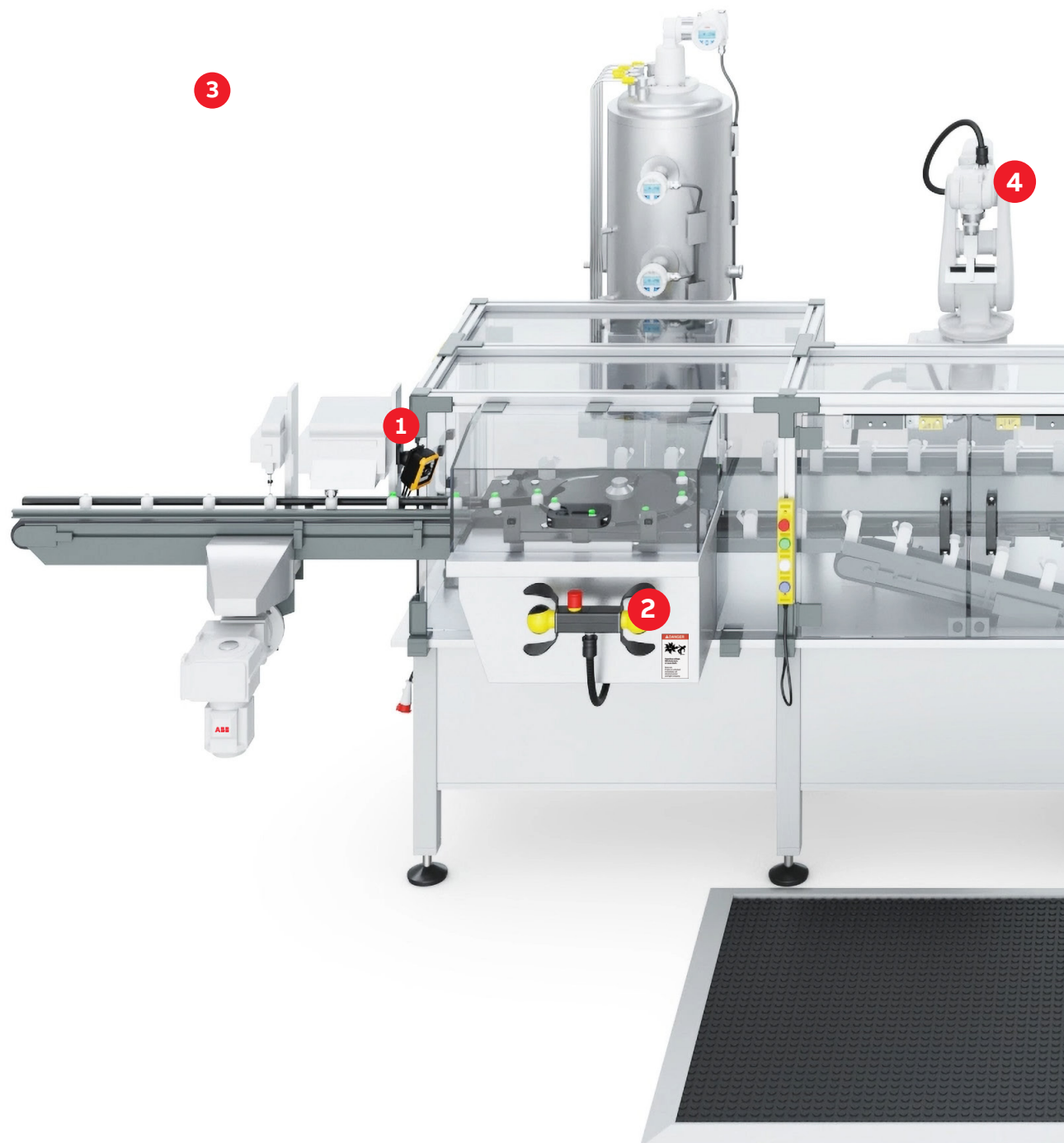




Machines and control cabinets

We also offer you a comprehensive portfolio of solutions for use in and around your machinery and control cabinet, no matter the environment

- 1
Ty-Rap cable ties
- 2
E-Z-Code
identification products
- 3
ExpressTray
steel wire basket trays
- 4
Sta-Kon wire terminals
- 5
Blackburn
grounding systems
- 6
PMA nonmetallic flexible
conduits and fittings
- 7
Catamount spiral wraps
- 8
Ty-Duct
wiring duct systems
- 9
Catamount cable ties
- 10
Blackburn
compression connectors
with Color-Keyed die
- 11
Catamount
protective cable sleeve



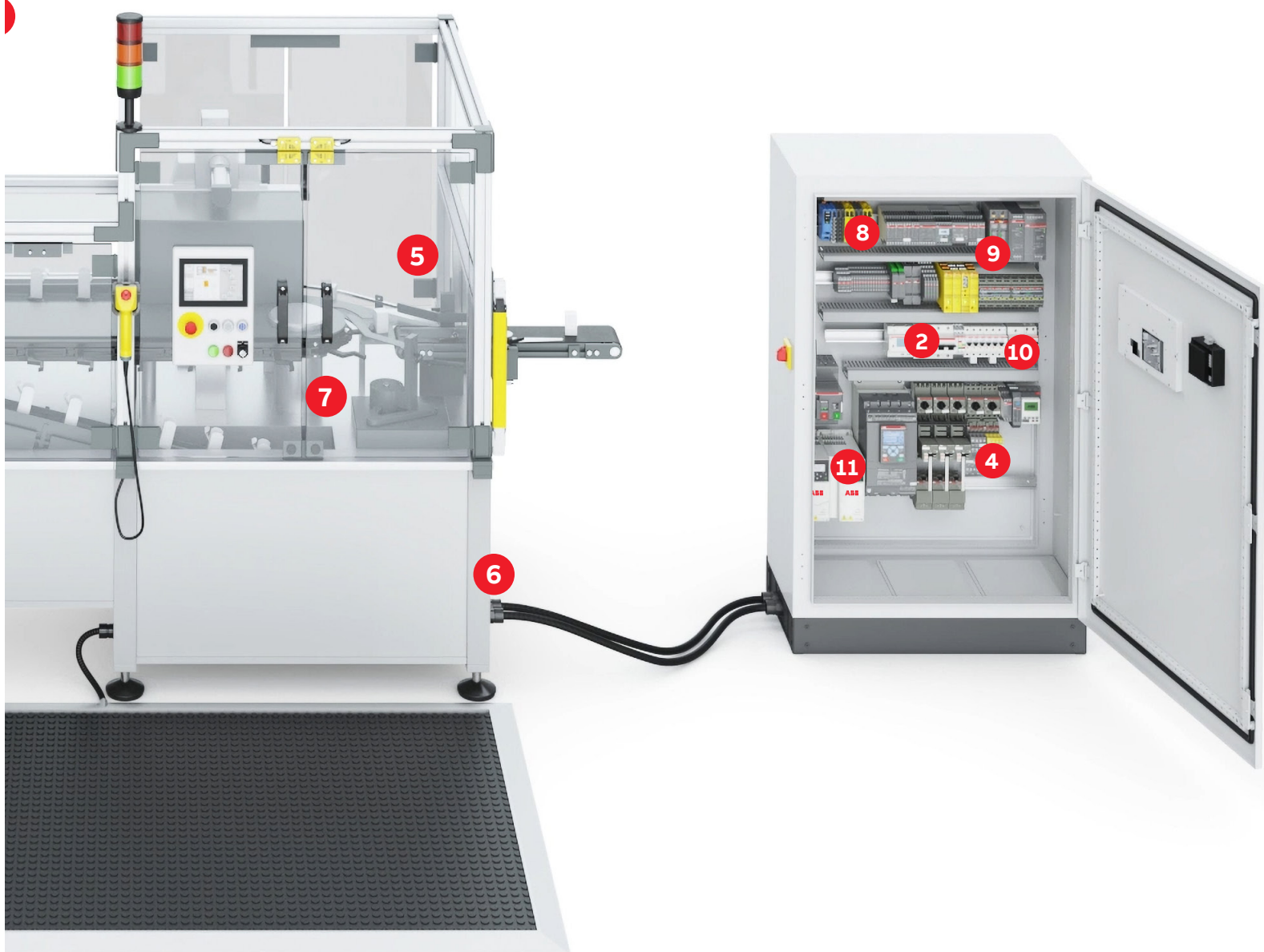




ABB Installation Products

700 Thomas Avenue
Saint-Jean-sur-Richelieu,
Quebec J2X 2M9
Tel.: +1 (450) 347 5318
Fax: +1 (450) 347 1976

tnb.ca.abb.com

