

REFERENCES

More flexibility for global IT

SMISSLINE TP in the Continental data center



— 01 Daniel Kubin (left) and Günter Kraus discuss the many possible applications of SMISSLINE TP. (Foto: Martin Leissl)

Most people are familiar with the long-established company Continental as a manufacturer of tires for cars and motorcycles. The fact that the DAX-listed company has now become one of the world's largest technology groups with a broad portfolio is much less well known. At the Frankfurt site, headquarters of the Chassis & Safety division, ABS and other driving stability systems are manufactured for almost all major car brands. In addition to production, the Frankfurt-based company is also developing technologies for the mobile future, such as automated driving.

The largest of three data centers responsible for global IT activities at Group level is located there. The other two are in Singapore and Auburn Hills in the USA.

Gigantic amounts of data

Data centers are particularly sensitive areas in which absolute reliability of all components used is essential. Due to the high proportion of R&D at the Frankfurt site in particular, the volume of data is enormous. One example: In Rödelheim, intensive research is being carried out into the future of automated driving.

Numerous high-resolution 4K cameras are installed in the self-driving cars. Anyone who has ever downloaded a movie in UHD, i.e. in 4K resolution of 3840 x 2160 pixels, can imagine the amount of data

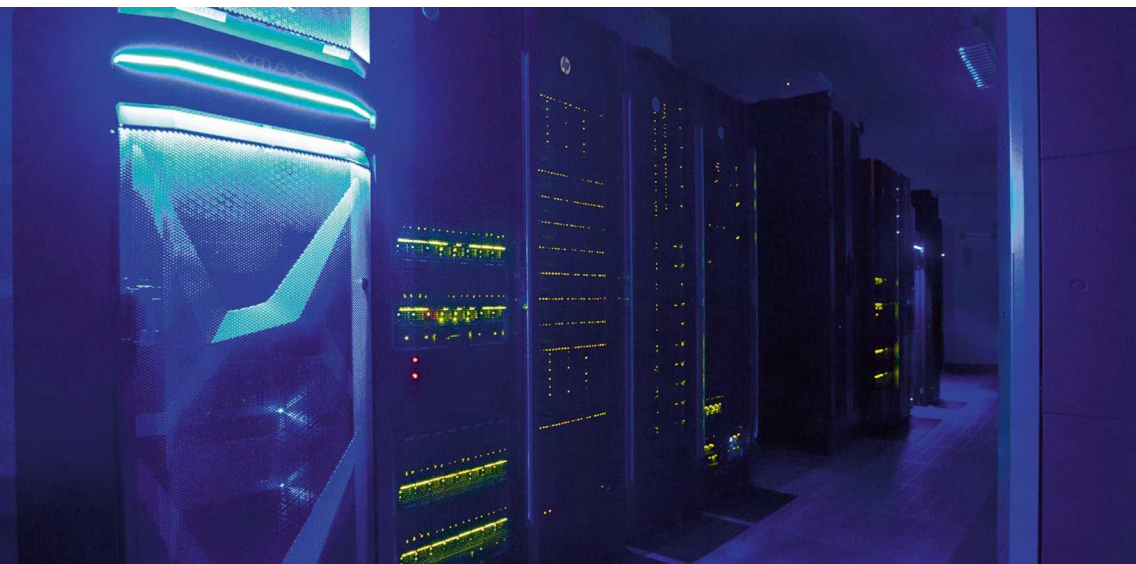
The Continental site in Frankfurt, Rödelheim is home to the largest of three corporate data centers worldwide. Many technologies for the future are being researched here; the plant also produces high-quality ABS and ESC systems. The Frankfurt-based company relies on ABB products, in particular SMISSLINE TP, to equip its data centers.

that is produced during the operation. "One hour of automated driving means around 1.5 TB of data, which we evaluate after the test," explains Günter Kraus, Team Leader Corporate IT Data Center.

"Compared to the previous DIN rail system, the SMISSLINE TP offers many advantages. The flexibility it offers is outstanding."

Working under voltage

The data center in Frankfurt runs at full capacity around the clock. To ensure that this works without disruption, the company opted for systems from ABB. In the distribution cabinets in the computing rooms, deep in the basement of the development center, the SMISSLINE TP plug-in distribution system has been performing reliably for more than five years. "Compared to the previous rail system, SMISSLINE TP offers many advantages," explains Markus Müller, Head of Energy and Automation Technology and Energy Manager at the Frankfurt plant.



01

01 Concentrated computing power: One of Continental's global data centers is located in the basement of the development center. (Foto: Martin Leissl)

02 The different generations of SMISLINE TP are compatible with each other and can therefore be used together. (Foto: Martin Leissl)

“The flexibility is outstanding: As a finger-safe system, it enables us to plug in or remove components under voltage without additional protective equipment.” This property is officially certified by the corresponding approval from the ETEM (Energy, Textile, Electrical, Media Products) trade association. In addition to the SMISLINE TP, XLP2 switch-disconnectors from ABB are also used in the switch cabinets.

“The bottom line is that we also save costs thanks to the reduced workload.”

20% less space

SMISLINE TP simplifies the installation of electrical systems as it can be mounted both vertically and horizontally. Space savings of up to 20% can be achieved through vertical installation. Different generations of the successful product from Schaffhausen are in use at Continental, and harmonize perfectly with each other.

“One of the key advantages of SMISLINE is its unrestricted backwards compatibility,” says Daniel Kubin, Product Manager Low Voltage at ABB.



02

“All these factors make SMISLINE TP an extremely adaptable system that allows us to react quickly to changing requirements,” says Günter Kraus. “I no longer need to worry too much about power distribution in this sensitive area,” adds Markus Müller. “That takes a lot of pressure off us.”

About Continental

Continental develops intelligent technologies for the mobility of people and their goods. With five divisions, the Group generated sales of EUR 40.5 billion in 2016 and employs more than 230,000 people in 56 countries. Continental Teves AG & Co. oHG is one of the oldest and largest manufacturing companies in Frankfurt and the headquarters of the Chassis & Safety Division. The division employs over 43,000 people worldwide and generated sales of around EUR 9 billion in 2016.

More information: www.continental.de

ABB Ltd.
Affolternstrasse 44,
8050
Zürich, Switzerland

new.abb.com/low-voltage

We reserve the right to make technical changes or modify the contents of this document without prior notice. With regard to purchase orders, the agreed particulars shall prevail. ABB AG does not accept any responsibility whatsoever for potential errors or possible lack of information in this document.

We reserve all rights in this document and in the subject matter and illustrations contained therein. Any reproduction, disclosure to third parties or utilization of its contents – in whole or in parts – is forbidden without prior written consent of ABB AG. Copyright© 2024 ABB All rights reserved