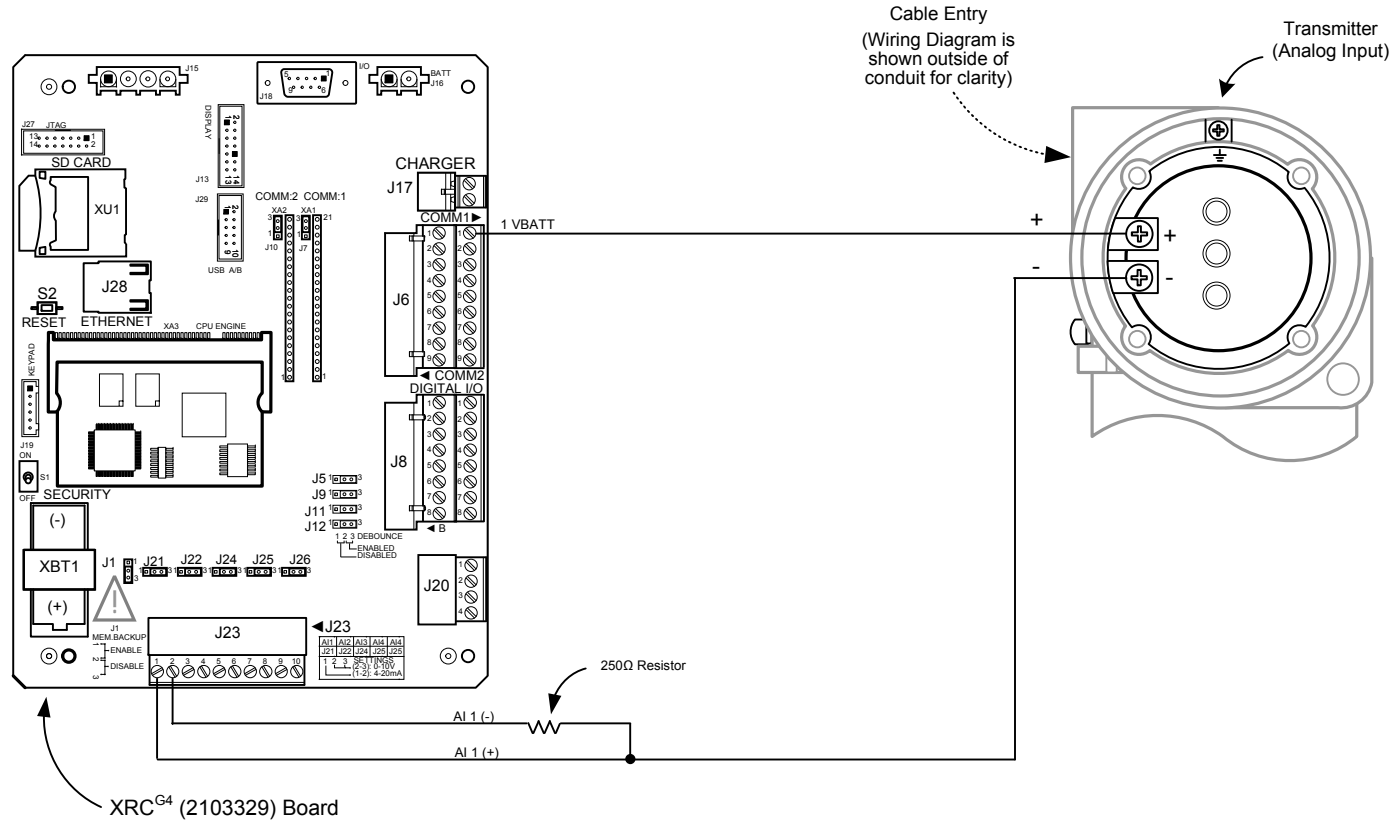



NOTES:

1. WARNING: This drawing does not illustrate the installation methods required for hazardous locations. Prior to any installation in a Classified Hazardous Location, verify installation methods by the Control Drawing referenced on the product's name tag and national and local codes.



REF: 2100247WI

|   |           |        |          |  |         |     |        |
|---|-----------|--------|----------|--|---------|-----|--------|
|  | TOTALFLOW | ACTION | DOC TYPE | TITLE  | DWG NO. | REV | SHEET  |
|   | Products  | L30042 | UD       | XRC <sup>G4</sup> (2103329 BD) AI TO 2-WIRE TRANSMITTER (ANALOG INPUT) | 2104336 | AA  | 1 OF 1 |