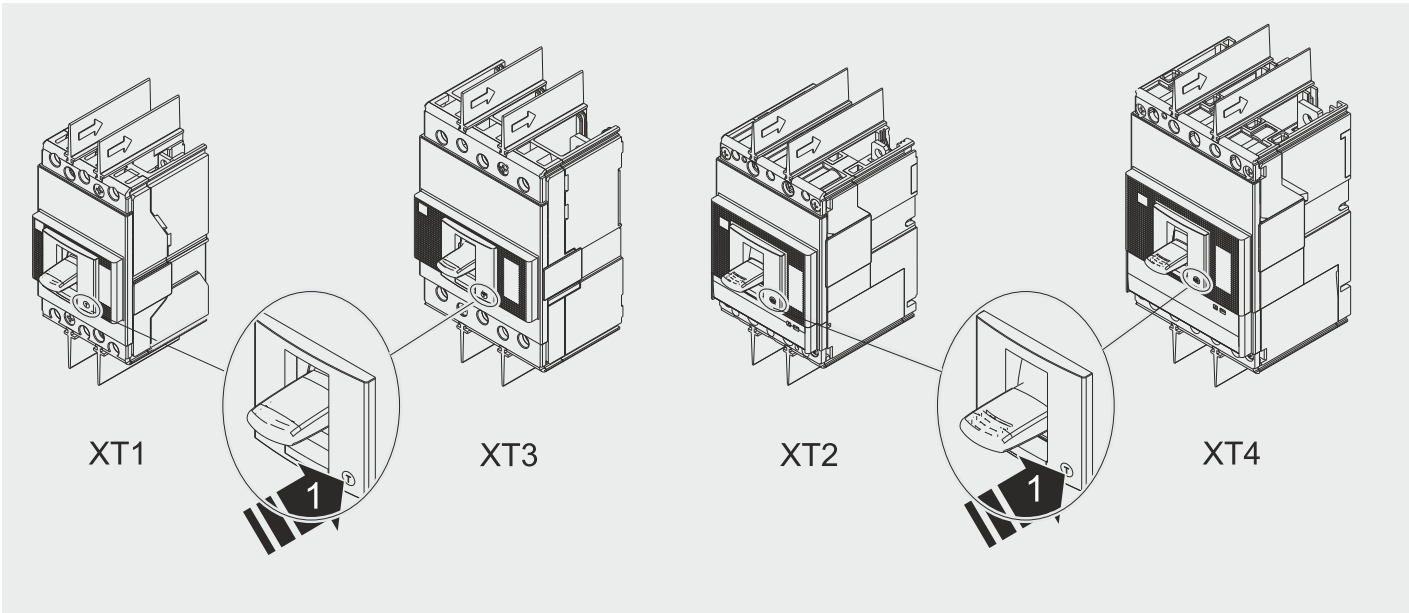

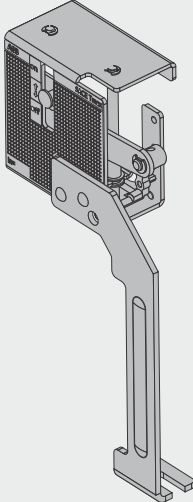
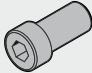


SACE Tmax XT

Flange Handle Breaker Mechanism XT1 - XT2 - XT3 - XT4
Flange Handle Meccanismo Interruttore XT1 - XT2 - XT3 - XT4
Kabelbetätigungsmechanismus XT1 - XT2 - XT3 - XT4
Mécanisme de câble opérateur XT1 - XT2 - XT3 - XT4
Mecanismo de operador de cable XT1 - XT2 - XT3 - XT4
电缆操纵器机构 XT1 - XT2 - XT3 - XT4

XT1 - XT2 - XT3 - XT4/III







1SDA117873R1 Flange Handle Breaker Mechanism Kit XT1..XT4		
		
	1	4

SAFETY INFORMATION

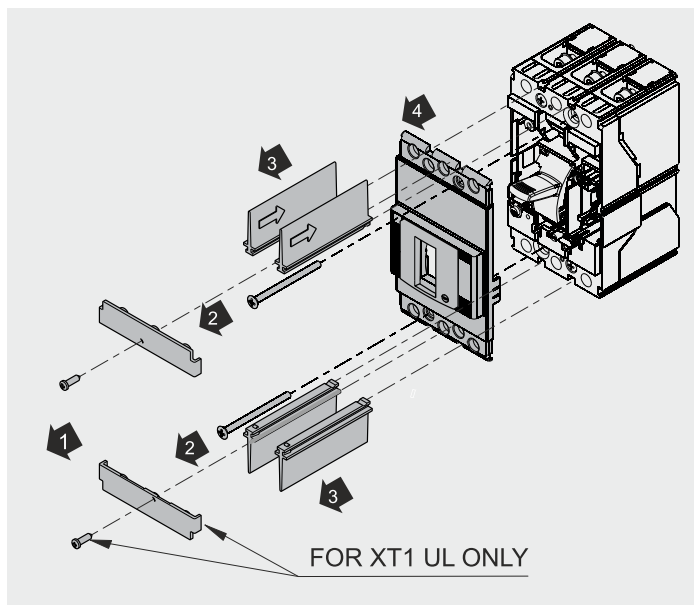
SAFETY NOTICE

Read these instructions carefully, and look at the equipment to become familiar with the device before trying to install, operate, service, or maintain it. The following special messages may appear in this documentation or on the equipment to warn of potential hazards or to call attention to information that clarifies or simplifies a procedure. The addition of this symbol to a “Danger” or “Warning” safety label indicated that an electrical hazard exists which will result in personal injury if the instructions are not followed. This is the safety alert symbol. It is used to alert you to potential personal injury hazards. Obey all safety messages that follow this symbol to avoid possible injury or death.

	<div data-bbox="391 645 1439 739">WARNING</div> <div data-bbox="391 739 1439 1108"><p>IMPROPER INSTALLATION, OPERATION AND MAINTENANCE Ensure only qualified personnel install, operate, service and maintain all electrical equipment. Before Installing the breaker, accesories or performing and maintenance, turn the breaker off, disconnect it from any voltage sources and follow the generally accepted safety procedures.</p><p>Failure to comply with these instructions can result in death or serious injury.</p></div>
	<div data-bbox="391 1176 1439 1265">CAUTION</div> <div data-bbox="391 1265 1439 1536"><p>IMPROPER INSTALLATION, OPERATION AND MAINTENANCE Indicates a hazardous situation and must follow installation instructions provided on how to avoid it.</p><p>Failure to follow these instructions can result in injury or equipment damage.</p></div>

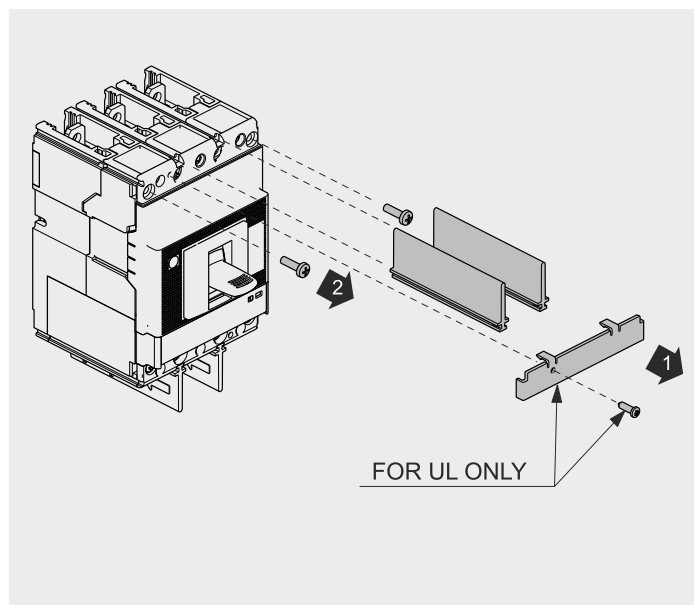
1

ONLY FOR XT1 F - XT3 F



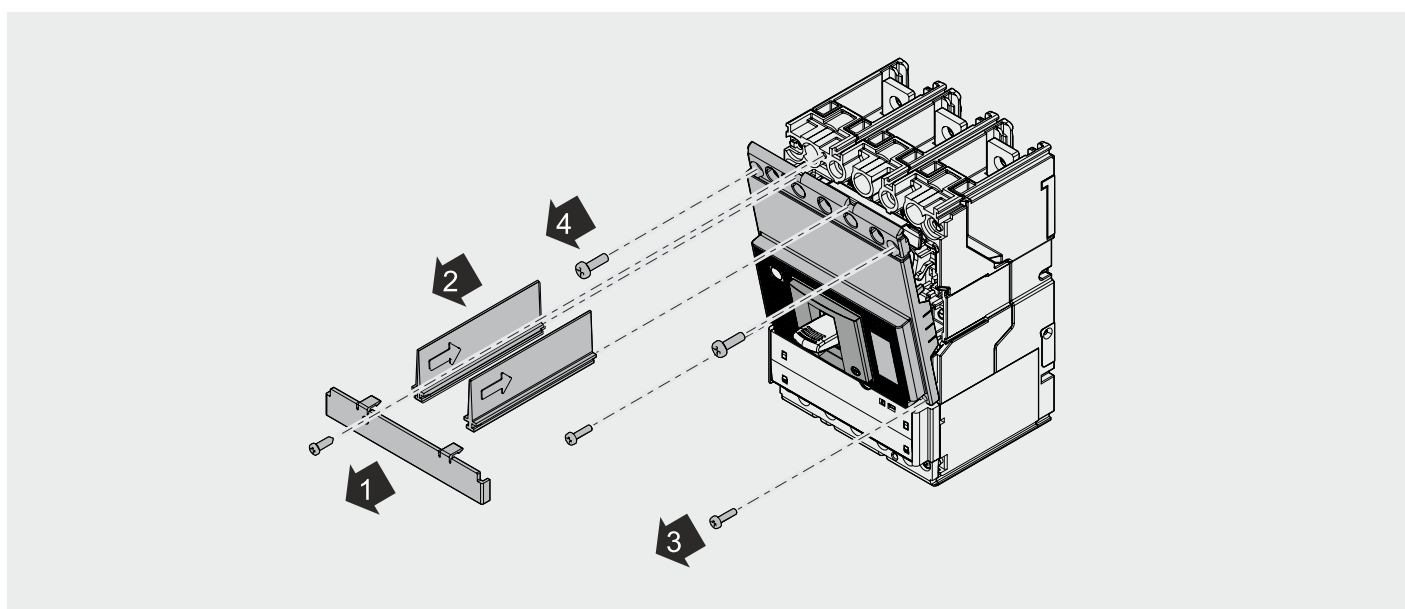
2

ONLY FOR XT2 F - XT4 F



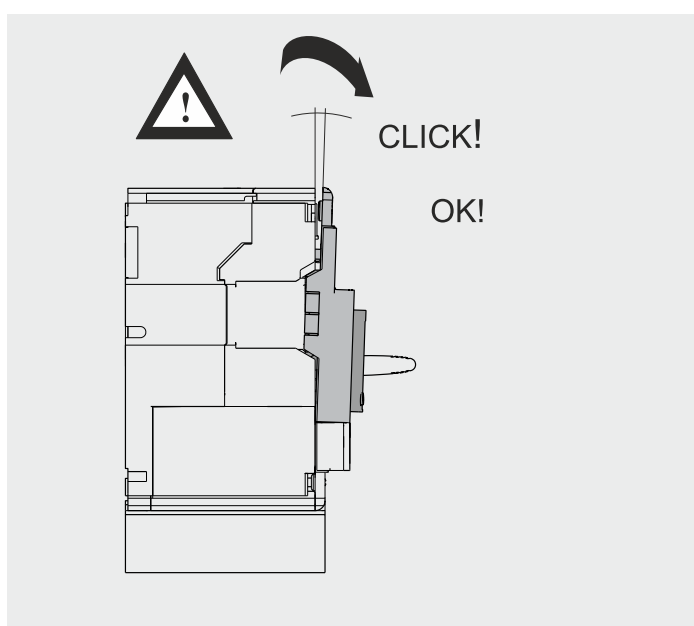
3

XT4 V - X ONLY



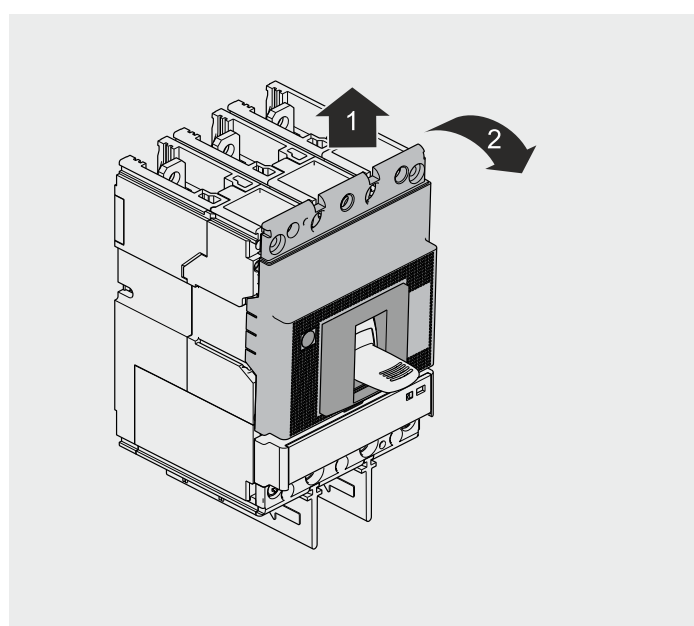
4

ONLY FOR XT2 F/P - XT4 F/P



5

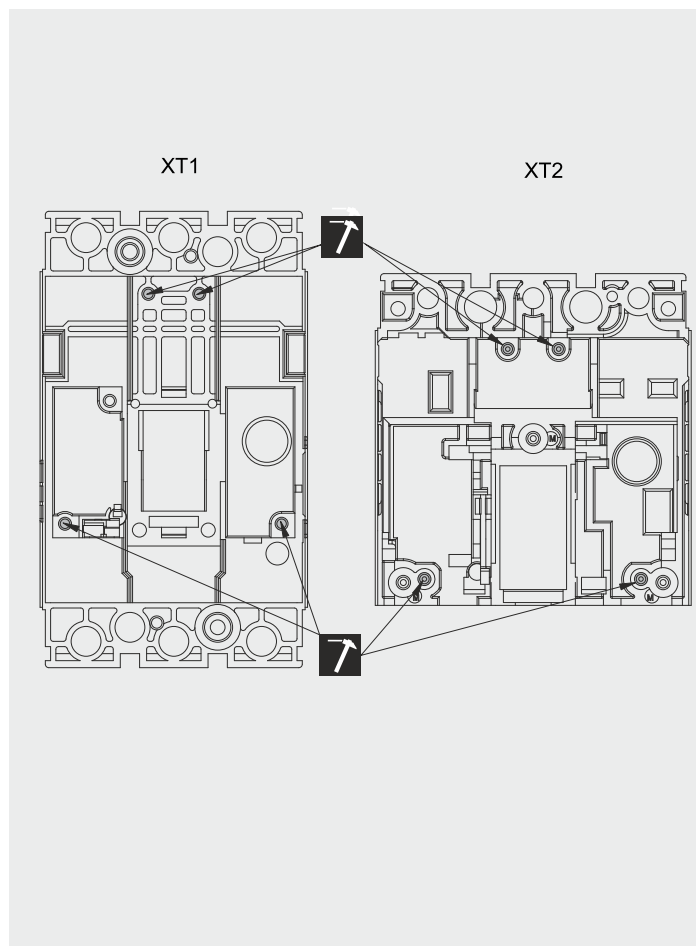
ONLY FOR XT2 F/P - XT4 F/P





7

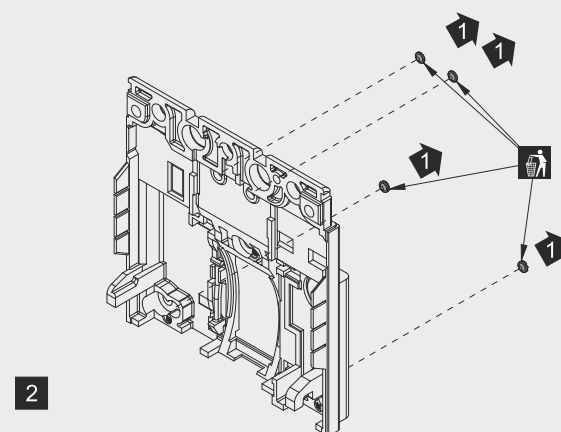
XT1 - XT2



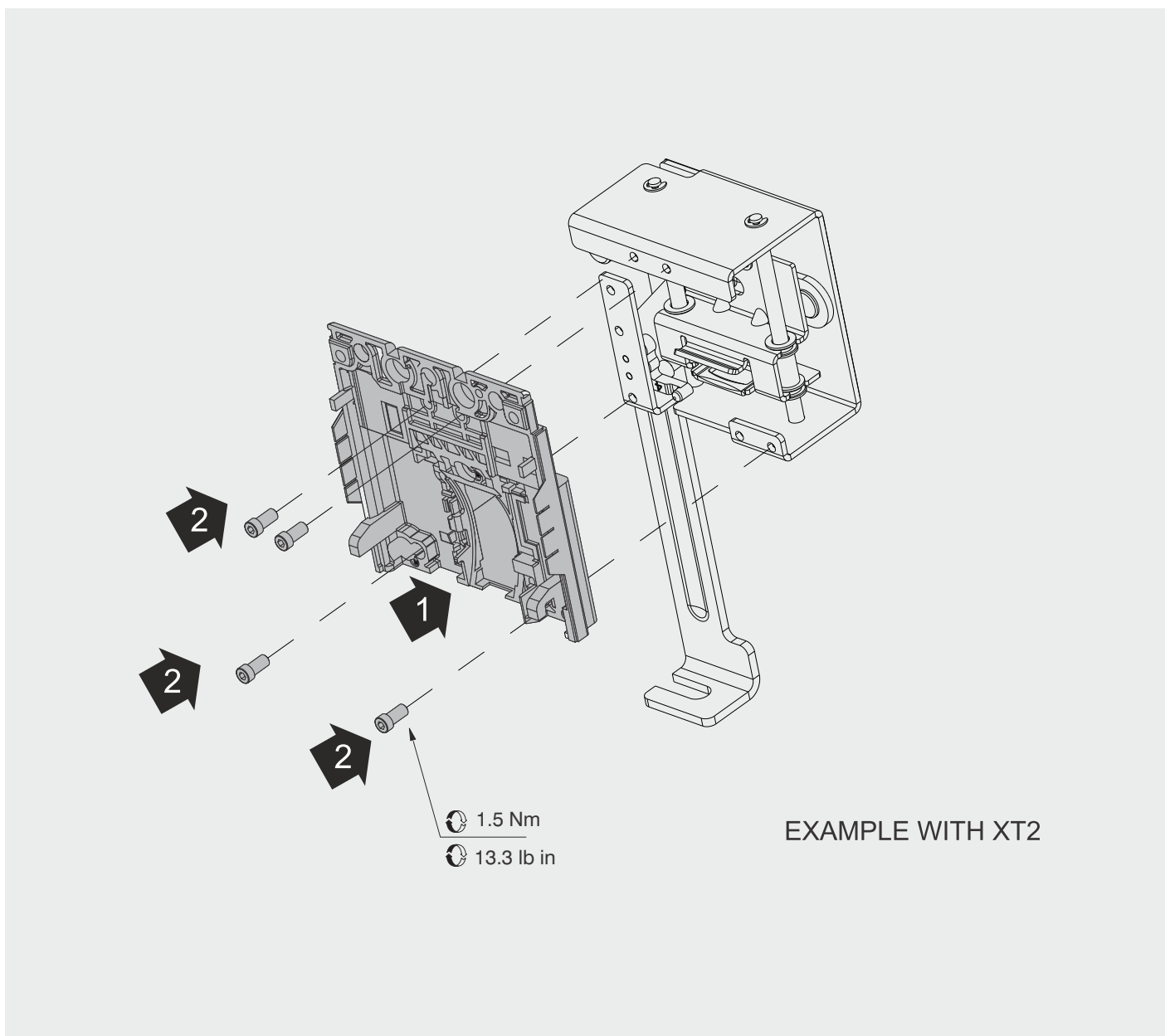
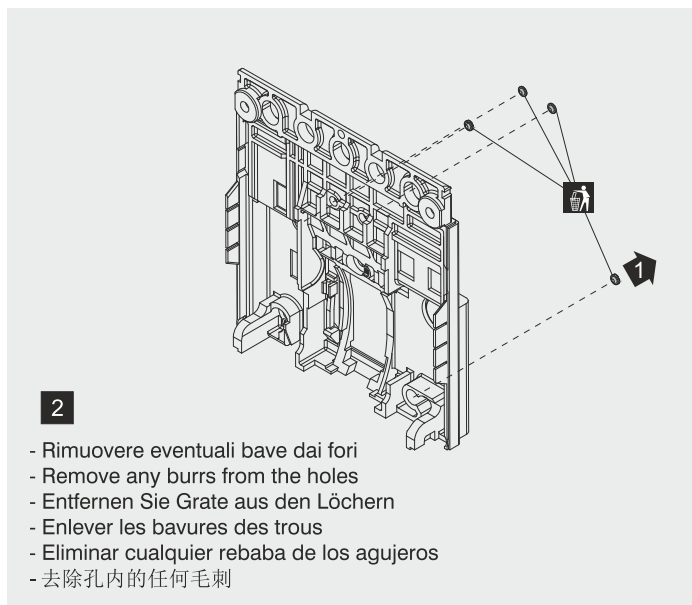
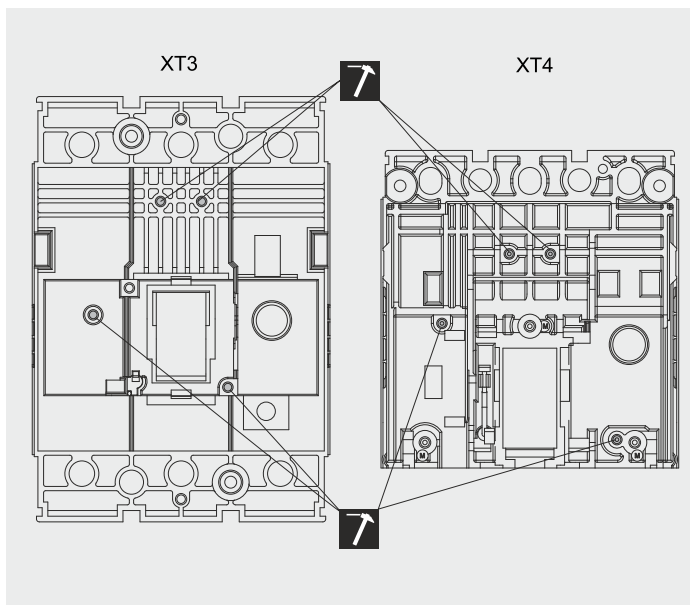
8

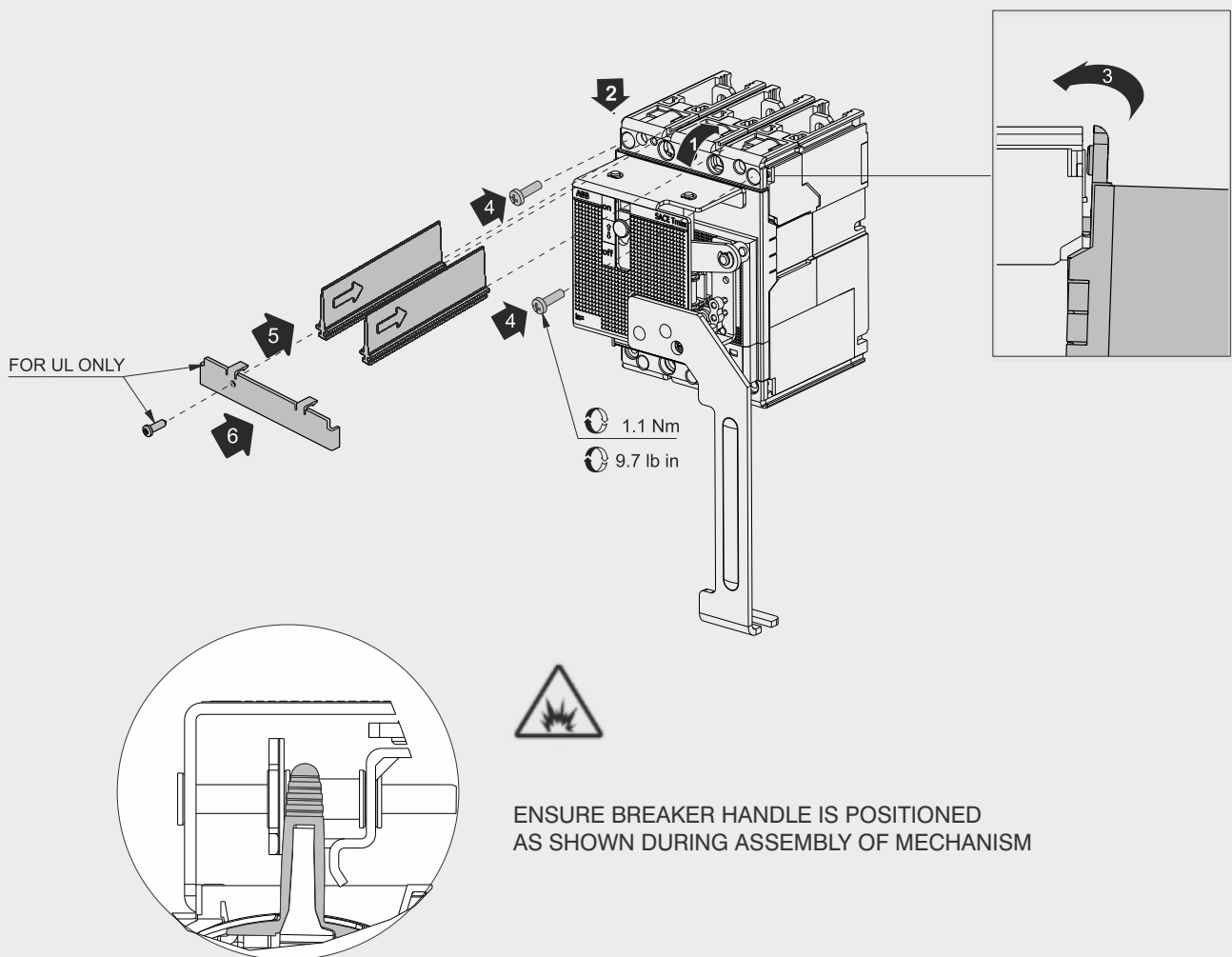
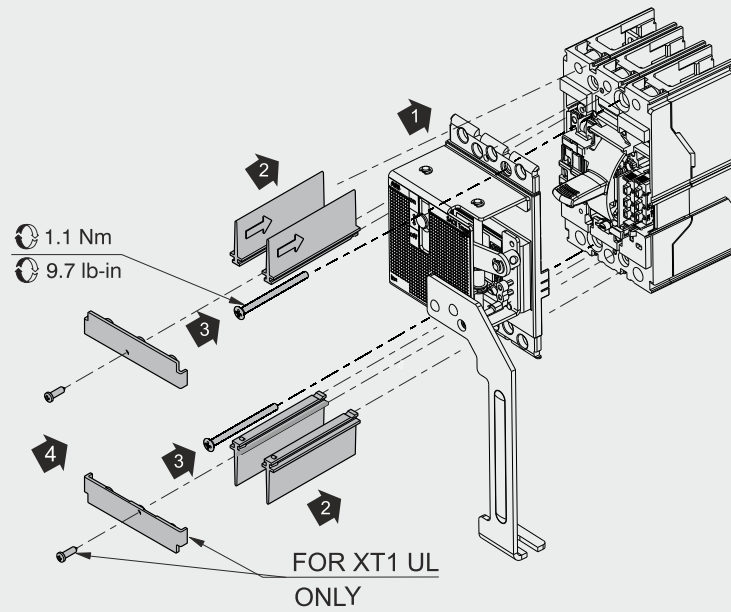
XT1 - XT2

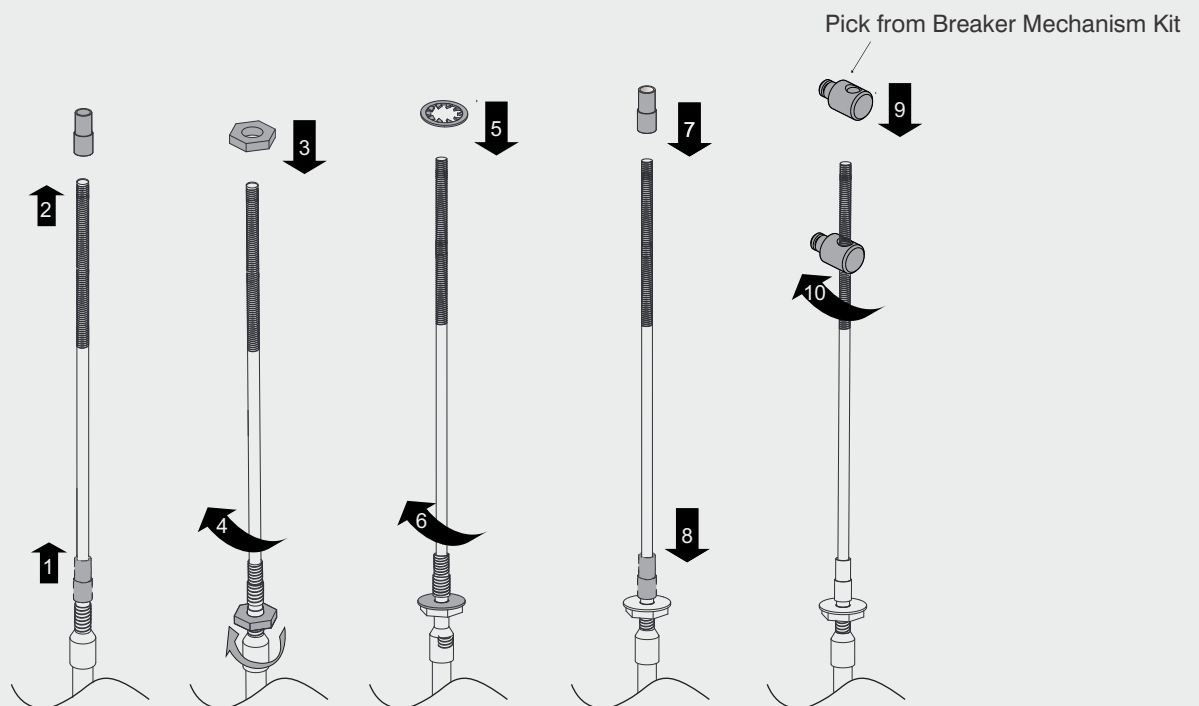
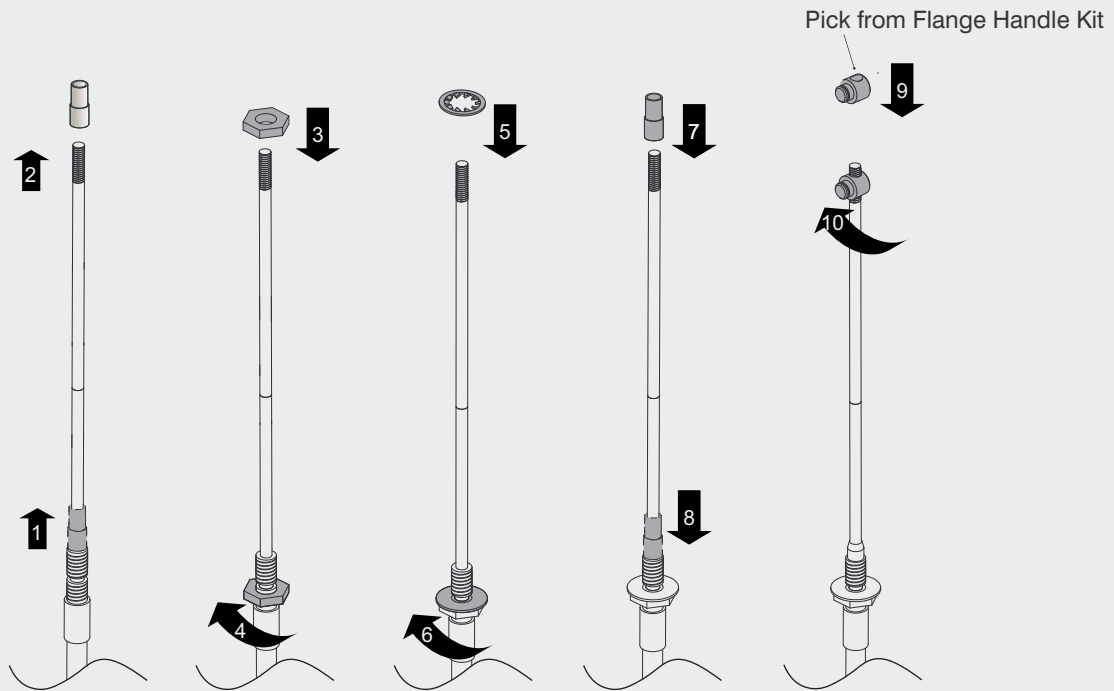
EXAMPLE WITH XT2

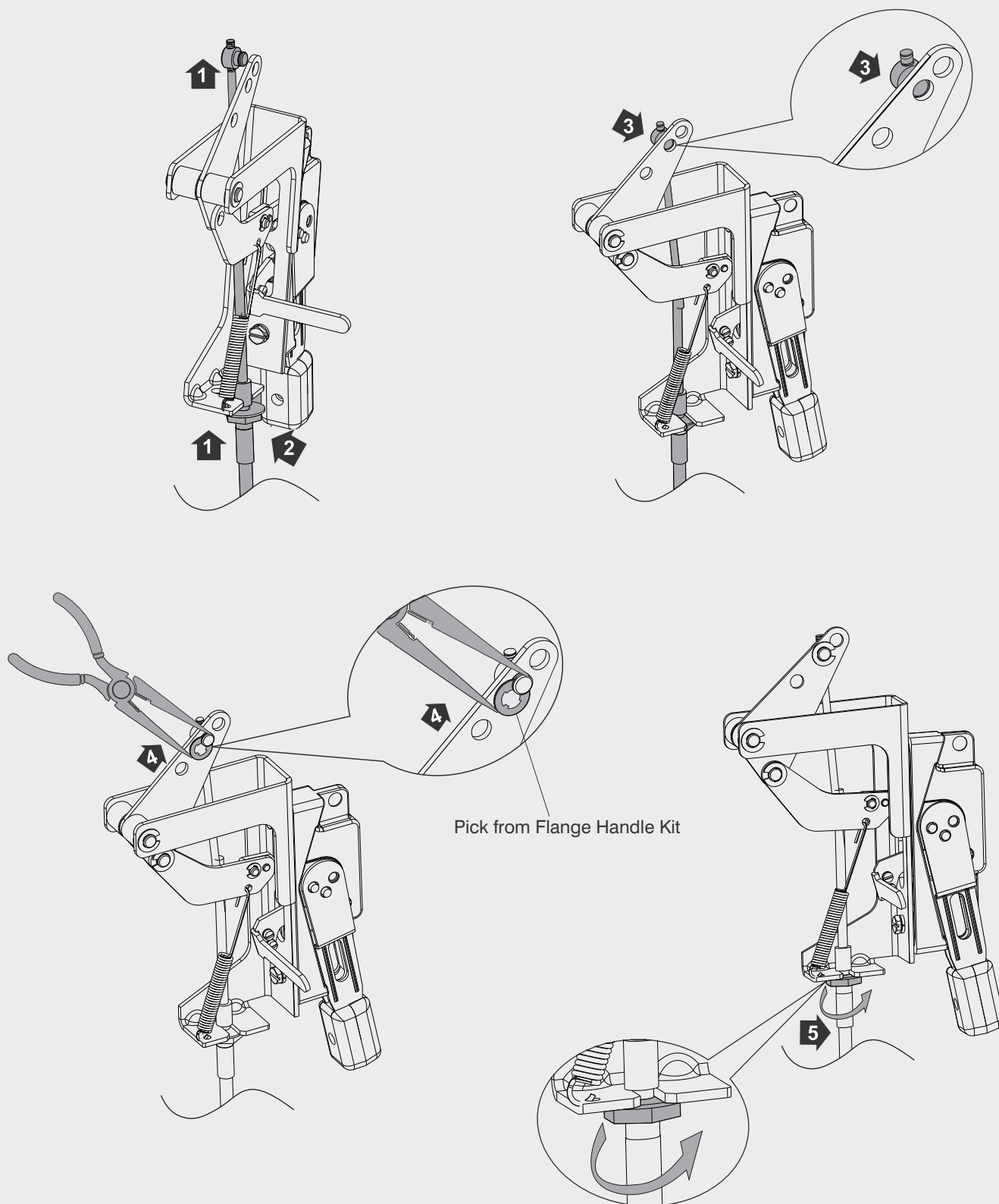


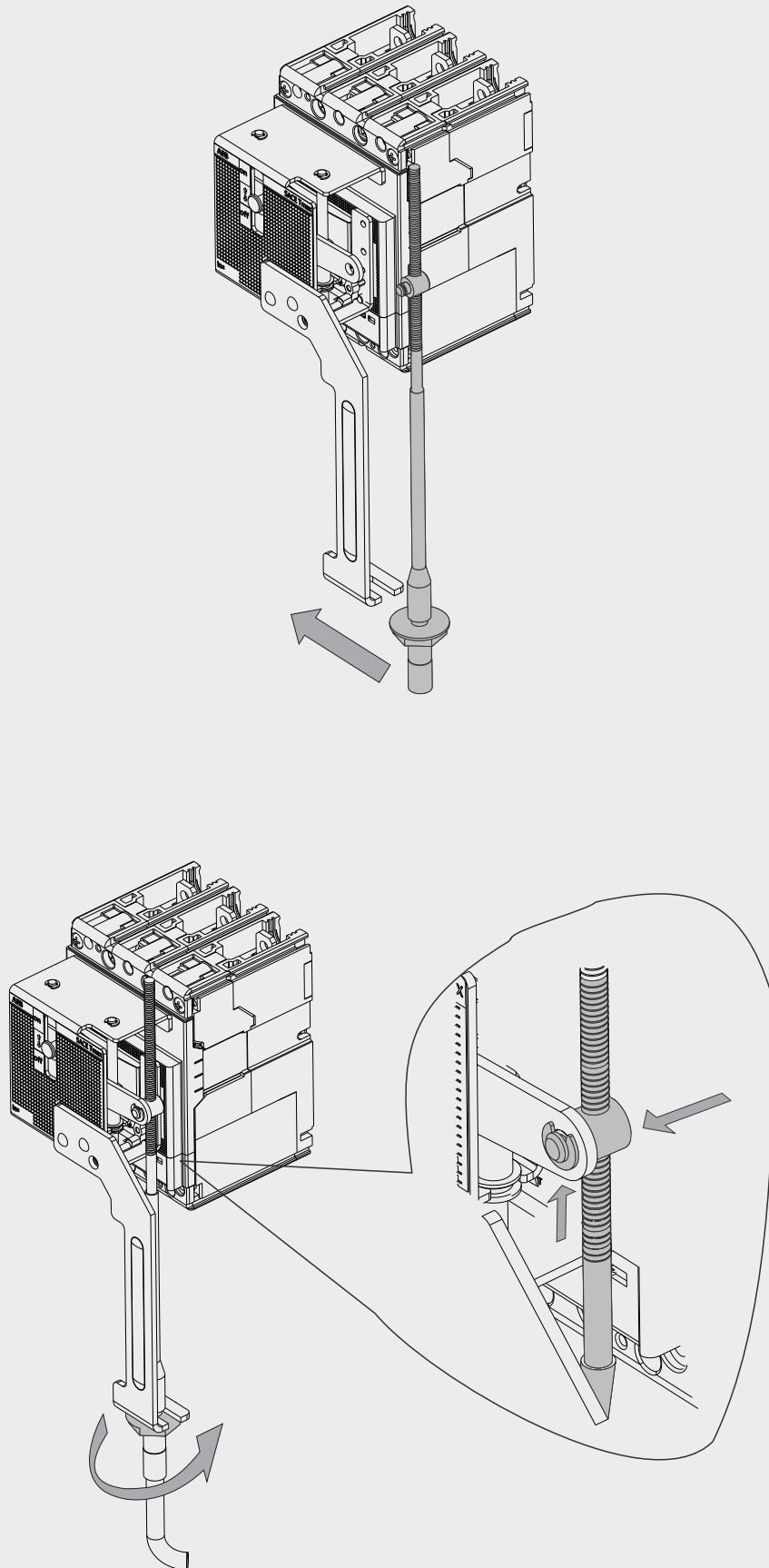
- Rimuovere eventuali bave dai fori
- Remove any burrs from the holes
- Entfernen Sie Grate aus den Löchern
- Enlever les bavures des trous
- Eliminar cualquier rebaba de los agujeros
- 去除孔内的任何毛刺





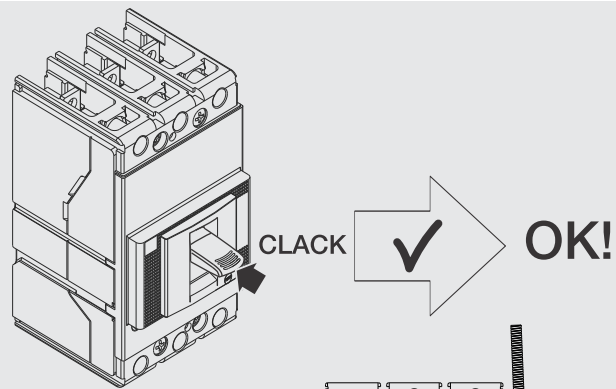




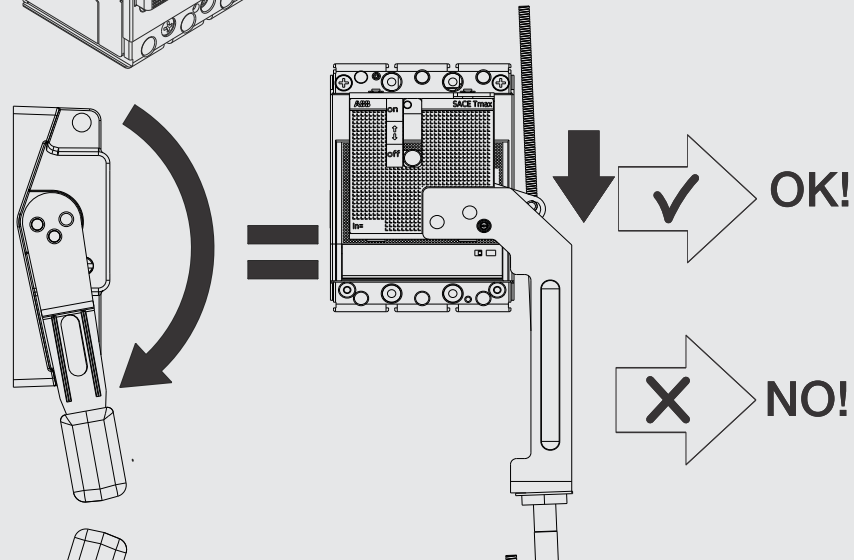




1 - Trip Breaker

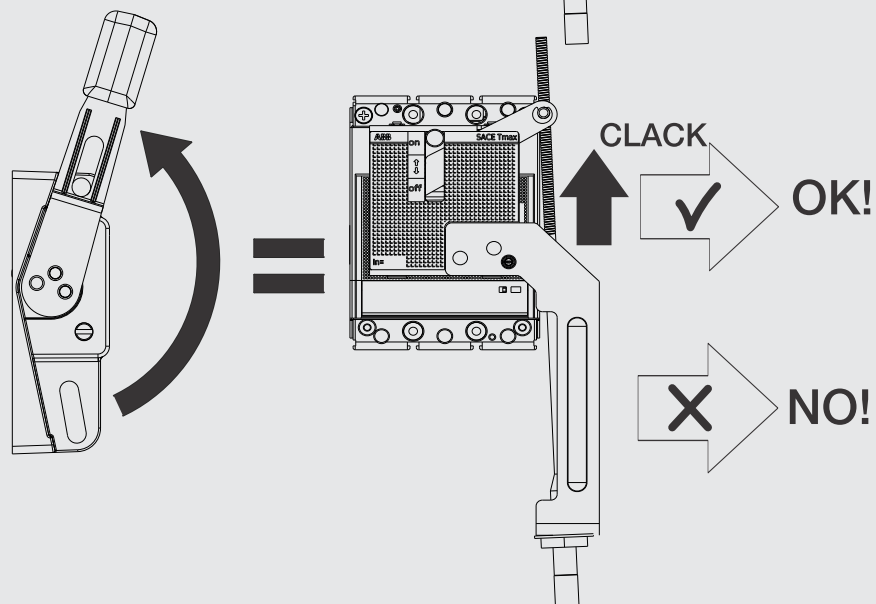


2 - Reset Breaker



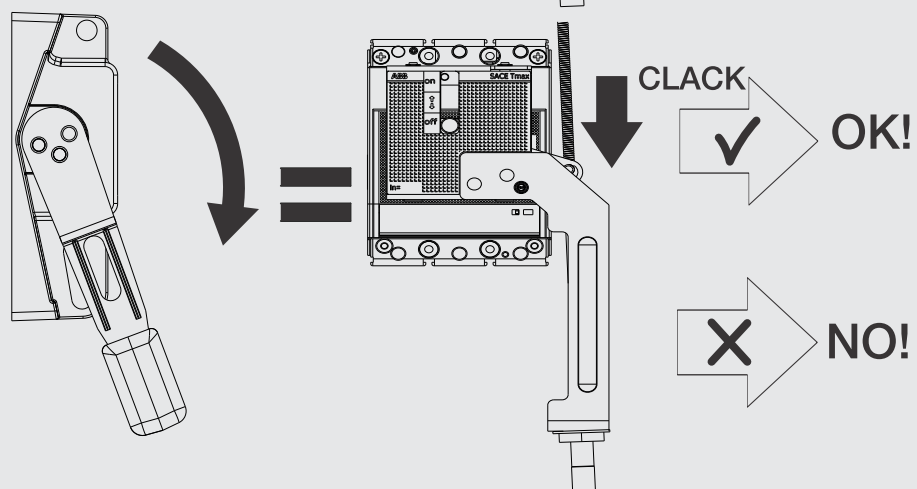
Vedi figura 19
See figure 19
Siehe Abb. 19
Voir figure 19
Véase figura 19

3 - Breaker On

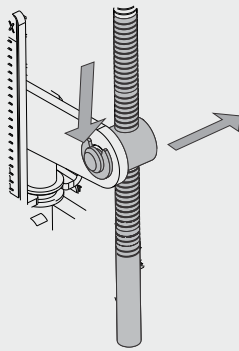
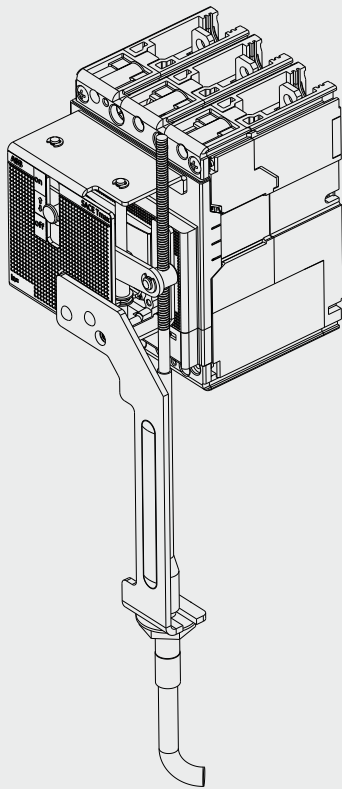


Vedi figura 20
See figure 20
Siehe Abb. 20
Voir figure 20
Véase figura 20

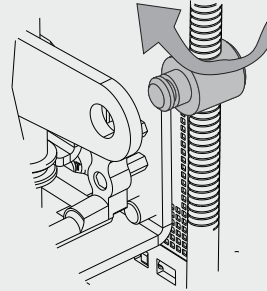
4 - Breaker Off



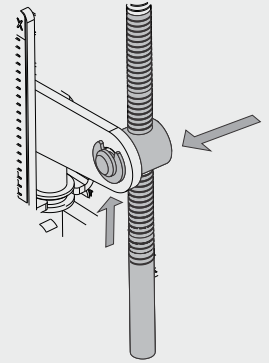
Vedi figura 19
See figure 19
Siehe Abb. 19
Voir figure 19
Véase figura 19



19A

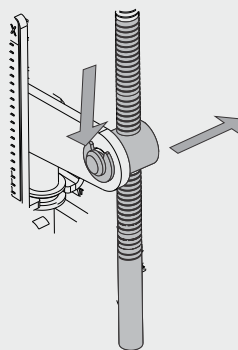
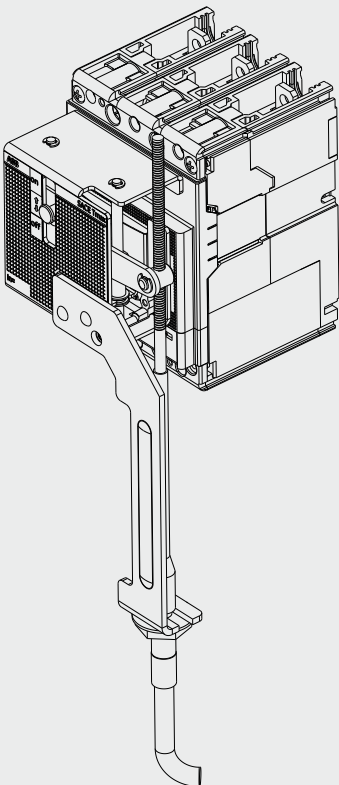


19B

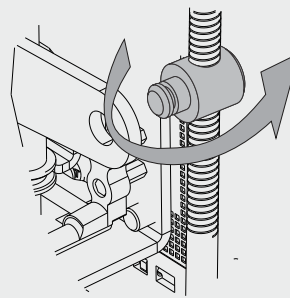


19C

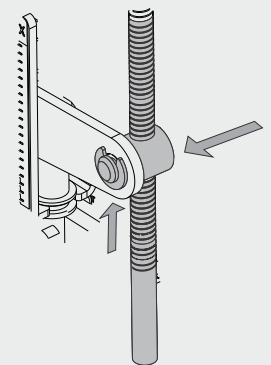
Repeat 18



20A



20B



20C

Repeat 18