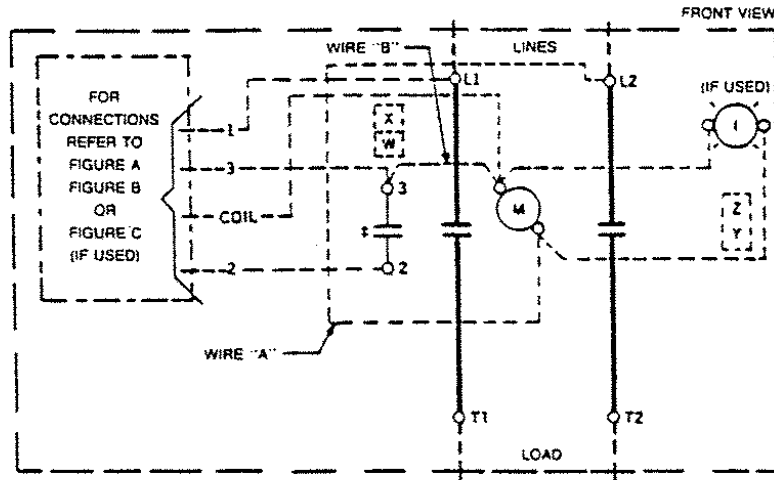
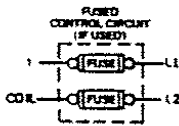
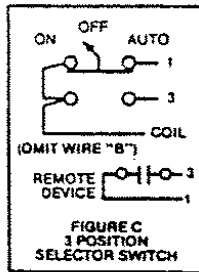
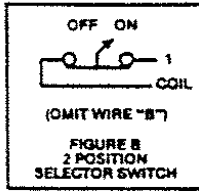
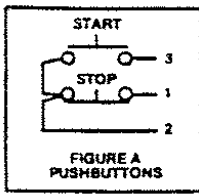


GEJ-7209 Information Label

CR360L Lighting Contactor

60, 100, 200, 300 Ampere-Single-Phase



The following accessory kits may be installed on this device.

	60 Ampere	100 Ampere	200 Ampere	300 Ampere
Aux Contact	CR305X200A, B, C, X100D, E	CR305X300A, B, C, X100D, E	CR305X500A, B, C, X100E, E	CR305X500A, B, C, X100D, E
Control Circuit Fuse	CR305X241A, B	CR305X341A, B	CR341X541A, B	CR305X541A, B
Principal Renewal Parts				
3 Movable & 6 Sta. Cont. Coil (Plus Suffix No. below)	546A780G051 15D22G	55-153677G002 55-501336G	55-154607G051 55-530249G	55-154607G002 55-530249G
For CSA-GND KIT				
1/2-IN CONDUIT	55-213403G001	1/2-IN CONDUIT	55-213403G005	
3/4-IN CONDUIT	55-213403G002	2-IN CONDUIT	55-213403G006	
1-IN CONDUIT	55-213403G003	2 1/2-IN CONDUIT	55-213403G007	
1 1/4-IN CONDUIT	55-213403G004	3-IN CONDUIT	55-213403G008	

M-LINE CONTACTOR
I-INDICATING LIGHT

Use 75°C, copper conductors only, for field wiring. Torque line and load terminals as shown at right.

Rating	Lb-in
60A	50
100A	150
200A	250
300A	300

FOR SEPARATE CONTROL—Omit wire "A" and connect control source to coil and to 1 on control device.

NOTE: Refer to the National Electrical Code. Additional control circuit overcurrent protection may be required.

COIL (Order Coil No. plus coil suffix number per table below)

60 Hz	115-120V	200-208V	230-240V	—	460-480V	575-600V
50 Hz	110V	—	220V	380V	440V	550V
Coil Suffix	002	023	003	064	004	005



EXTRA AUXILIARY CONTACTS				
Final Suffix Letter Of CR Number	Contact Location, See Diagram			
	W	X	1Y	1Z
A (Or None)				
B				
C				
D				
E				
F				
G				
H				
J				
1Z	No Holding Interlock			

† Not available when Control Circuit Fuse Kit is used.